

HEESEN 50M STEEL YN19650 PROJECT AU — HEESEN YACHTS



Builder: HEESEN YACHTS

Year Built: 2022

Model: SHELBY

Price: PRICE ON APPLICATION

Location: Netherlands

LOA: 164' 1" (50.00m)

Beam: 29' 7" (9.00m)

Min Draft: 9' 0" (2.75m)

Max Draft: 0' 0" (0.00m)

Cruise Speed: 12 Kts. (14 MPH)

Max Speed: 15 Kts. (17 MPH)

Our experienced yacht broker, Andrey Shestakov, will help you choose and buy a yacht that best suits your needs. Heesen 50m Steel YN19650 Project Aura — HEESEN YACHTS from our catalogue. Presently, at Shestakov Yacht Sales Inc., we have a wide variety of yachts available on our sale's list. We also work in close contact with all the big yacht manufacturers from all over the world.

If you would like to buy a yacht Heesen 50m Steel YN19650 Project Aura — HEESEN YACHTS or would like help answering any questions concerning purchasing, selling or chartering a yacht, please call +1(954)274-4435

TABLE OF CONTENTS

TABLE OF CONTENTS	2
SPECIFICATIONS	4
Overview	4
Basic Information	4
Dimensions	4
Speed, Capacities and Weight	4
Accommodations	5
Hull and Deck Information	5
Engine Information	5
DETAILED INFORMATION	6
First impressions	6
Step aboard	6
Exclusions	6
Disclaimer	6
PHOTOS	7
Main saloon	7
Main saloon dining	7
Sky Lounge	7
Sky Lounge	7
Beach club	8
Owners suite	8
Owners office	8
Owners bathroom	8
Owners bathroom	8
Guest suite	8
Guest bathroom	8
Sun deck	8
Wheelhouse deck	9

Main deck	9
Lower deck	9
CONTACTS	10
Contact details	10
Telephones	10
Office hours	10
Address	10

SPECIFICATIONS

Overview

Blending practicality with luxurious detail, this 50-metre steel-hulled yacht has been optimised to deliver the largest possible volume while still remaining under the 500 GT threshold. Wrapped in a refined yet striking exterior, Aura makes a splash for all the right reasons.

A true bluewater motor yacht ideal for cruising, Aura features a displacement hull designed by Heesen’s in-house team of naval architects and engineers. Two MTU 8V4000 M63 engines provide a top speed of 15 knots to travel and explore new horizons. A bulbous bow allows her to glide through the water with ease. At 50 metres, this cutting-edge design boasts a range of 3,800 nautical miles at a cruising speed of 13 knots.

Basic Information

Category: SHELBY	Sub Category: Motor Yacht
Model Year: 2022	Year Built: 2022
Country: Netherlands	

Dimensions

LOA: 164' 1" (50.00m)	Beam: 29' 7" (9.00m)
Min Draft: 9' 0" (2.75m)	Max Draft: 0' 0" (0.00m)
MFG Length: 164' 1" (50.00m)	

Speed, Capacities and Weight

Cruise Speed: 12 Kts. (14 MPH)	Cruise Speed Range: 3800
Max Speed: 15 Kts. (17 MPH)	Displacement: 970033.9528 Pounds
Gross Tonnage: 499 Pounds	Water Capacity: 5283.44104 Gallons
Fuel Capacity: 15850.32312 Gallons	

Accommodations

Total Cabins: 5	Total Berths: 6
Sleeps: 10	Total Heads: 8
Captain Cabin: True	Crew Cabin: 5
Crew Berths: 9	Crew Sleeps: 9
Crew Heads: 5	

Hull and Deck Information

Hull Material: Steel	Deck Material: Teak
Hull Configuration: Full Displacement	Hull Color: White
Hull Finish: Steel	Hull Designer: Heesen Yachts
Exterior Designer: Clifford Denn Design	Interior Designer: Reymond Langton design

Engine Information

Engines: 2	Manufacturer: MTU
Model: 8V 4000 M63	Engine Type: Inboard
Fuel Type: Diesel	

DETAILED INFORMATION

First impressions

British designer Clifford Denn has imagined a sophisticated exterior with generous outdoor space. A large sun deck promises the best of the yachting lifestyle, complete with jacuzzi, al fresco dining and sun loungers. Tenders and toys are stored on the foredeck. The spacious aft deck complements the part-enclosed sky lounge. Access to the water is made easy from the enticing main deck aft. The stairs on both sides lead to the fold-out swim platform. Built upon Heesen's proven technical platform, Aura invites guests to step aboard, and chill.

Step aboard

Aura transforms a yacht into a home. The interior, imagined by British studio Reymond Langton Design, is defined by clean lines and surfaces. Billowy clouds of white and taupe give an ethereal elegance, peppered with sharp accents of sea greens and deep blues. Textured materials evoke a sense of calm, refined by the chicness of Scandinavian simplicity. Light, airy and spacious areas are ideal for entertaining. Natural light and well-placed ambience LEDs are twinned with views of the great outdoors. True to her name, Aura is a glowing hub of comfort on water.

Exclusions

Owner's personal belongings.

Disclaimer

The Company offers the details of this vessel or yacht in good faith but cannot guarantee or warrant the accuracy of this information nor warrant the condition of the vessel. A buyer should instruct his representatives, agents, or his surveyors, to investigate such details as the buyer desires validated. This vessel or yacht is offered subject to prior sale, price change, or withdrawal without notice.

PHOTOS



Main saloon



Sky Lounge



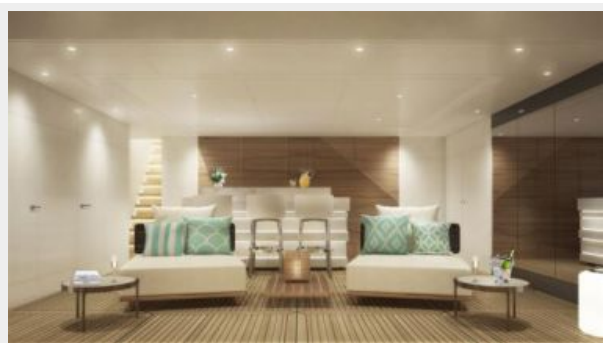
Main saloon dining



Sky Lounge



Beach club



Owners suite



Owners office



Owners bathroom



Owners bathroom



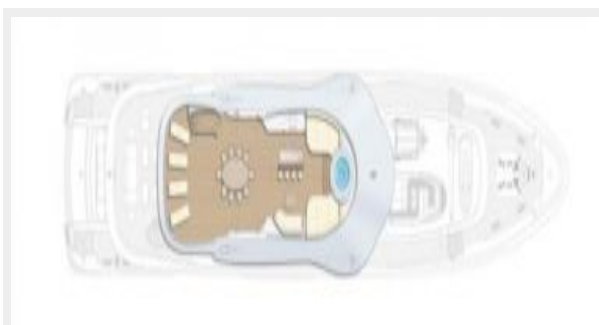
Guest suite



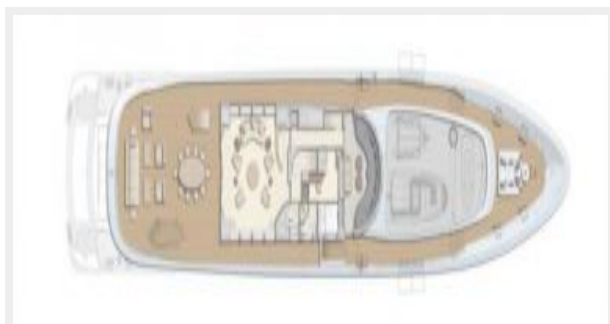
Guest bathroom



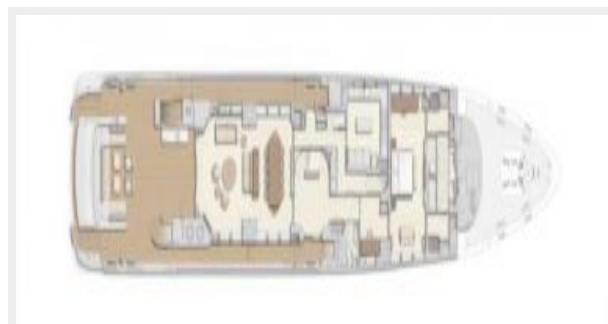
Sun deck



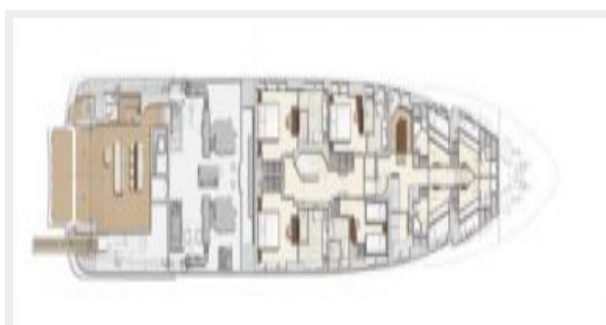
Wheelhouse deck



Main deck



Lower deck



CONTACTS

Andrey Shestakov, leading yacht broker of the sales department of Shestakov Yacht Sales Inc. Shestakov Yacht Sales Inc., the official representative of the Miami/Fort Lauderdale FL headquarters.

Contact details

Email: **andrey@shestakovyachtsales.com**

Web: shestakovyachtsales.com/en/

Telephones

USA: **+1(954)274-4435**

Office hours

Monday – Saturday: **9:00 - 21:00 EDT**

Sunday: **closed**

Address



Harbour Towne Marina, 850 NE 3rd St,
STE 213, Dania, FL 33004