

SEASEID — CUSTOM



Судостроитель: CUSTOM

Год постройки: 2008

Модель: Моторная яхта

Цена: ЦЕНА ЯХТЫ ПО ЗАПРОСУ

Местонахождение: Mexico

Длина общая: 82' 0" (24.99m)

Ширина: 19' 6" (5.94m)

Мин. осадка: 5' 0" (1.52m)

Купить Seaseid — CUSTOM а также выбрать подходящую вам яхту из нашего каталога яхт вам поможет опытный яхтенный брокер Андрей Шестаков. На сегодняшний день компания Shestakov Yacht Sales Inc. имеет большое количество яхт в собственном списке продаж, а также тесно сотрудничает со всеми крупными яхтенными производителями по всему миру.

Для того чтобы купить яхту Seaseid — CUSTOM а также проконсультироваться по любому вопросу связанному с покупкой, продажей, чартером яхт позвоните по телефону **+7(918)465-66-44**.

ОГЛАВЛЕНИЕ

ОГЛАВЛЕНИЕ	2
ХАРАКТЕРИСТИКИ	3
Обзор	3
Основная информация	3
Размеры	3
Скорость, вместимость и масса	4
Размещение	4
Корпус и палуба	4
Информация о двигателе	4
ПОДРОБНОЕ ОПИСАНИЕ	5
Descriptions and Features	5
Исключения	10
Отказ от ответственности	10
ФОТОГРАФИИ	11
КОНТАКТЫ	31
Контактная информация	31
Телефоны	31
Время работы	31
Адрес	31

ХАРАКТЕРИСТИКИ

Обзор

"SEASEID" is an excellent example of a Cockpit Motor Yacht. She features three impressive staterooms plus crew accommodations for two aft. The extended cockpit gives you tremendous flexibility for water activities with easy access to the engine room, lazaret, and crew quarters. She features a timeless interior styling with high gloss wood panels complemented with complete upgrades in 2020.

Notable Features

- Caterpillar Engines C 18
- 2300 Nautical Mile Range
- 2 Wing stations aft, STB & Port
- Aft Flybridge back down station
- All systems are hydraulic
- Zero Speed Stabilizers
- 2020 Intellian HD Satellite TV
- 2020 Garmin Electronics
- 2020 wood floor in Salon

Основная информация

Тип судна: Моторная яхта

Модельный год: 2008

Год постройки: 2008

Страна: Mexico

Открытая палуба мостика: Да

Кубрик: Да

Размеры

Длина общая: 82' 0" (24.99m)

Ширина: 19' 6" (5.94m)

Мин. осадка: 5' 0" (1.52m)

Скорость, вместимость и масса

Водоизмещение: 114000 Pounds

Вместимость воды: 400 Gallons

Вместимость сточного бака: 400 Gallons **Объем топливного бака:** 3000 Gallons

Размещение

Всего кают: 5

Всего коек: 4

Всего ком. состава: 5

Корпус и палуба

Материал корпуса: Fiberglass

Информация о двигателе

Двигатели: 2

Производитель: Caterpillar

Модель: C18

Тип топлива: Diesel

ПОДРОБНОЕ ОПИСАНИЕ

Descriptions and Features

LAYOUT AND DESCRIPTION

The "SeaSeid" 82' Mystica is an extremely well built and luxuriously appointed yacht. She offers a 3 stateroom layout with two aft crew staterooms that are finished to the same quality level found throughout the vessel, thus they can be utilized for crew or guests.

The interior walls and cabinets are finished in Makore wood with Camphor burl accents. The galley features Corian countertops with top of the line appliances.

On the main deck forward of the galley, a full dining table with large windows offers a wonderful vista to the passing scenery. The pilothouse/lounge features wrap around seating, and a wet bar. Visibility and operation are unmatched from the comfort of two Stidd helm chairs and full navigation electronics.

The extended sport deck is equipped with a hydraulic platform for easy launching and retrieval of the Inflatable Walker Bay tender. An additional Steelhead #800 capacity davit is cleverly hidden under the coaming on the port side of her boat deck.

SALON

Entering the salon from the main deck dinette you will see the striking custom bamboo and beautiful headliner with mirrored accents and recessed lighting. Opposite the lovely sectional couches is a Hitachi 51" flat screen TV on galley bulkhead. Cabinets are finished in Makore wood with Camphor burl accents.

Forward is the galley to port and a convenient day head to starboard.

- Hitachi 51" flat-screen TV
- Bose sound system with surround sound speakers and multi-room control
- Air conditioning throughout
- Large frameless windows with custom shades
- Aft Cockpit access to crew accommodations, laundry, and engine room

GALLEY

The galley features white Corian countertops & backsplash. Cabinets are finished in stainless. There is a large built-in dining area forward with a pantograph door to access the starboard side deck

- Dacor ceramic cooktop
- Dacor built-in oven
- Dacor convection microwave oven

- Fisher & Paykel single drawer dishwasher
- LG refrigerator/freezer with icemaker
- Bosch trash compactor
- Viking 3/4hp disposal
- Blanco Stainless steel sink & faucet
- Sea Recovery Aqua Whisper water maker remote control
- Bamboo flooring
- Day head
- Starboard side pantograph door for side deck access

FLYBRIDGE & HELM

The Upper on this vessel may be her most desirable feature. It offers a 360' location for the vessel's operation, navigation, and management of ship's systems. It also provides a retreat from the salon and galley below on her main deck. There is a comfortable L-Shaped Wet Bar. The owners have custom-built an enclosed Tender House. The convenient wet bar that provides working space for a laptop while staying in touch with your home base.

- 2020 Garmin Displays Plotter/Radar with camera views
- ICOM IC-M602 VHF/Hailer
- P & S Maxwell 3500 windlass remote controls
- Simrad AP-50 autopilot with RPU-80 pump and remote
- Mactrow IS15 wind speed/direction
- ABT Bow & Stern thruster controls
- ABT Marine digital stabilizer control
- Intellian HD Satellite TV receiver
- Tank Sentry monitor
- Fuel & water monitor
- TankWatch 4 holding tank monitor
- Bilge compartment high water light/alarm
- Vessel Monitoring Inc camera control with two displays
- Exalto pantograph wiper control
- Bench seating with chrome upgrade
- Stainless steel spoke helm wheel
- Additional stairs from the boat deck to the aft deck & transom provide easy access up & down for your crew.

ACCOMMODATIONS

Amazingly, this is a five stateroom yacht, each with en-suite heads. There are three owner's staterooms forward and two "crew" staterooms aft. The crew staterooms are finished to a high standard and can easily be considered for guest accommodations.

Access to the owner's area is from the forward salon-down. There is a lovely foyer separating the three stateroom's entrances. The owner's stateroom is mid-ship and is a full-beam stateroom with

his & hers baths separated by a shared frameless glass shower enclosure. All cabinets are finished in Makore wood panels with Camphor burl accents.

MASTER

- King walk around bed
- Six large vertical portlights with custom shades
- Dual mirrored entry doors for added opulence
- Hitachi flat screen with Denon DVD player
- Large hanging closet

ENSUITE

- Custom marble counters & floors
- Decorative lighting
- Headhunter Head
- Frameless glass shower enclosure
- Grohe faucets and tap sets
- Opening portlights

VIP STATEROOM

The VIP guest stateroom with island queen is forward and comes with its own en-suite head & large stall shower.

- Island bed
- Cedar lined closets
- Sharp TV with Alpine CD/DVD player (DVA-9860)
- Air conditioning
- Opening portlights
- Overhead hatch

GUEST STATEROOM

Forward to port with a lovely double bed, en-suite head with generously sized stall shower,

- Island bed
- Cedar lined closets
- Sharp TV with Alpine CD/DVD player (DVA-9860)
- Air conditioning
- Opening portlights

- Decorative lighting

CAPTAIN'S STATEROOM

Accessed from the aft deck the Captain's stateroom can easily double as a fourth guest area. It is

finished to a very high standard and it features an island bed, en-suite wet head, opening portlights, separate audiovisual equipment, and decorative lighting.

CREW STATEROOM

The crew stateroom is to starboard and features one single bunk and en-suite wet head. It has easy access through the cockpit and the watertight transom door.

ENGINES

- Twin Caterpillar C 18 mains, 1050 hp each (reported 4500 hours) with ZF transmissions and MMC/ZF Smart Command controls in the pilothouse and aft deck port and starboard wing stations and flybridge
- 24 volt starting batteries
- 75 amp alternators on mains
- 1 X 25 KW Northern Lights with isolation mounts & water/exhaust separator & muffler
- 1 X Northern Light 16 kW night time generator
- 2 X Auto Shore 50 amp 230v/115v converter - 100 amp total
- Outback Inverter
- Hart Genset battery charger
- Dolfin main engine battery charger
- Dual Racor fuel filters for main engines
- Sundown anti-vibration engine mounts
- Underwater exhaust with bypass
- Sea-Fire automatic fire suppression system
- American Bow Thruster 38hp bow thruster
- American Bow Thruster 25hp stern thruster
- American Bow Thruster Trac Stabilizers with 12 sq/ft fins
- Stainless Sea Chest
- Reverso Model GP706 oil change system for main engines, transmissions & generators
- Delta T Systems PT induction/exhaust system with temperature gauge
- Chilled water air conditioning with reverse cycle heating
- Airtex clear acrylic sight gauges for fuel tanks
- Groco bronze seacocks and strainers with a sea chest
- 2 X Hubble 30 Gallon hot water tanks
- PYI-PSS shaft seals new in 2017
- Stainless steel shafts & struts
- Stainless steel rudders and rudder posts
- Five bladed Nibral propellers

HULL AND DECK HARDWARE

This is an extremely well-built vessel with solid fiberglass below the waterline with vinyl ester resin barrier coats. The bottom is finished with three coats of Gel shield and two coats of anti-fouling paint. The hull is cored fiberglass above the waterline.

- 2 X Maxwell VWC-3500 hydraulic anchor windlass
- 2008 11' Inflatable Walker Bay tender with 30hp Evinrude E-Tech outboard
- 1 X Aritex stainless steel 130lb anchors with 400' Of 3/8" high test chain with swivel
- Buel dual chrome air horns with 110 volt Craftsmen 125 PSI compressor
- 3 X Heyworth pantograph windshield wipers
- 8 X stainless steel bulwark hawse pipes for deck mounted cleats
- Stainless steel 2 1/2" oval handrails on the main deck with two opening side deck gates
- 12 X rectangular opening portlights with screens
- 6 X vertical portlights
- Deck hatch to VIP stateroom with safety ladder, screen, and a blackout shade
- Freshwater cockpit shower
- Steelhead Marine 800lb capacity davit on the boat deck. Hidden beneath a custom combing
- Fresh & saltwater wash downs on the flybridge
- 1 X flybridge floodlights
- 2 X cockpit floodlights
- Foredeck storage lockers with gas spring lifts
- Teak decking on the main weather deck, stairs.

The teak covered aft deck or California Deck is well set up for outdoor dining and entertaining. There is a large table that should comfortably seat 8 for lunch. A wet bar allows drinks to be prepared away from the galley. Outdoor speakers add to the atmosphere.

Two cockpit helm stations make slow-speed maneuvering and docking stress-free. An ICOM Command mike keeps you in touch. There are oversize bollards for mooring and two side deck gates and a collapsible set of stairs stowed out of sight until ready for use.

ELECTRICAL

- 1 X Northern Lights PMS-25 diesel generators in sound shields with isolation mounts & water/exhaust separator & muffler
- 1 X Northern Light 16 volt night time generator
- Main electrical panel with 4 sub-zones: AC/DC panels located throughout
- Digital volt & amp meters for 110/220 VAC, 24V DC & 12V DC system
- Manual switching for shore & generator systems
- 2 X 50 amp shore power, Auto Shore 50 amp 208V-240V 60hz with Charle PM3 isolation transformer
- Glendenning cable master with 90'-50amp 125V-250V cord
- 2 X Rolls 12HHG325 start batteries inboxes
- 2 X Gel cell generator starting batteries
- 4 X 6 volt (820 amp) Rolls Marine house bank batteries
- Dolfin 24-30 volt battery charger for engine starting batteries
- 3500 Watt Outback Inverter (model VFX3524M) with charger for the house bank
- Newmar Generator battery charger
- 110-volt outlets with GFI's as required

- 124-volt ceiling lighting with 24-volt safety lighting
- Courtesy lights throughout at walkways & stairs (LED)

PLUMBING

- Sea Recovery 1400GPD Aqua Matic watermaker w/plankton filters freshwater backflush & galley remote
- Kitec fresh & saltwater piping
- Wastewater 400 gallon capacity with Head Hunter Mako pumps. Shut off valves for each tank
- Head Hunter Flush toilets
- 2 X Head Hunter Mach 5 110 volt fresh water pumps
- Chemical-free ozone system for black, grey, and potable water
- 5 X bilge pumps with automatic switches and high water alarms
- Fresh and raw water washdowns
- Cockpit freshwater shower

Исключения

При продаже яхты исключаются личные вещи владельца.

Отказ от ответственности

Компания предоставляет описание судна или яхты добросовестно, но не может гарантировать точность этой информации, а также не ручается за техническое состояние. Покупатель должен проинструктировать своих агентов или оценщиков исследовать представленную информацию более подробно, по собственному желанию. Продажа судна или яхты, изменение цены или снятие с продажи будет происходить без предварительного уведомления.

ФОТОГРАФИИ





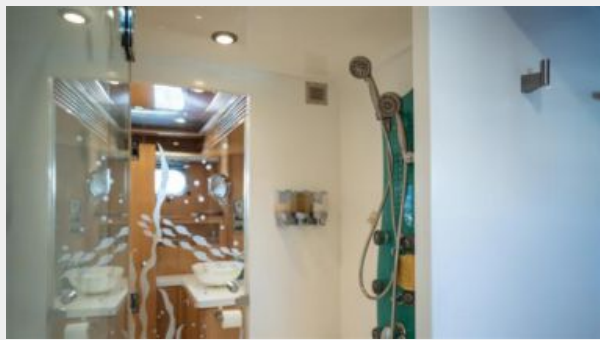


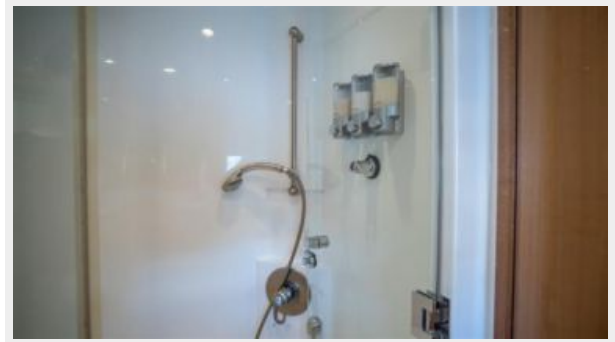


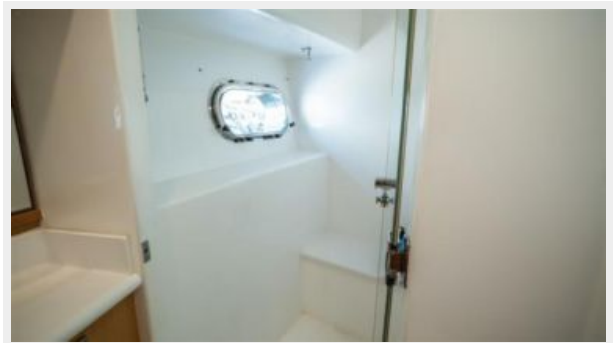


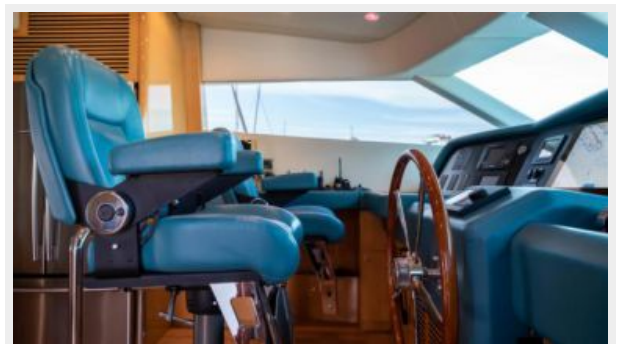


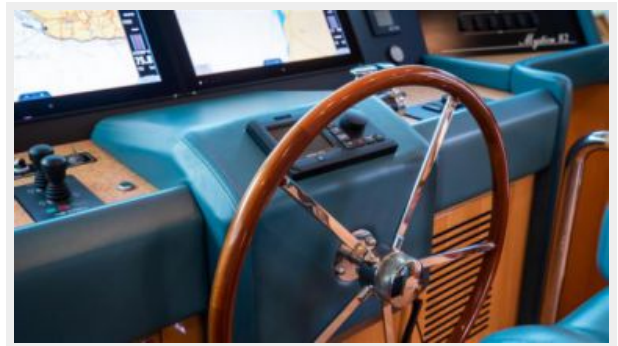
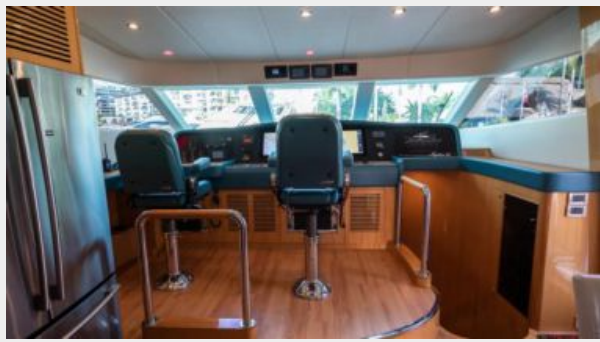


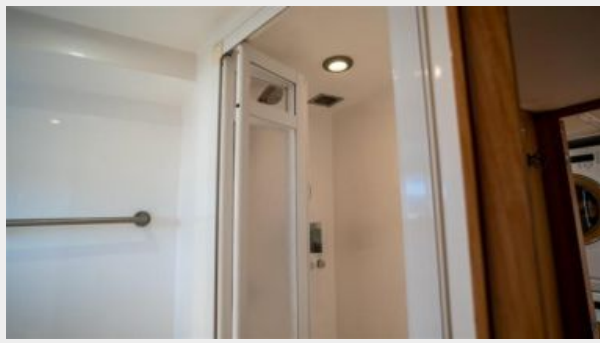




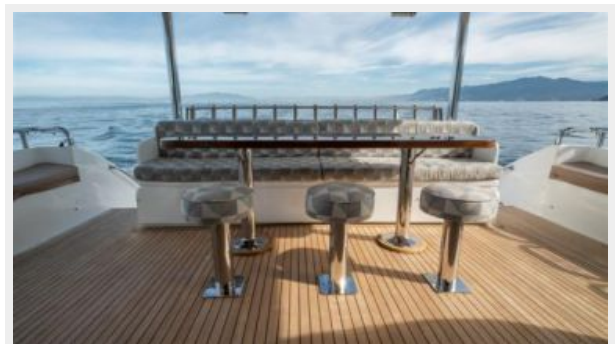






















КОНТАКТЫ

Андрей Шестаков (Andrey Shestakov) – ведущий яхтенный брокер отдела продаж яхт и судов компании Shestakov Yacht Sales Inc. Официальный представитель Shestakov Yacht Sales Inc. для русскоговорящих клиентов в центральном офисе компании в Майами/Форт Лодердейл/Флорида/США.

Контактная информация

Email: andrey@shestakovyachtsales.com

Web: shestakovyachtsales.com

Телефоны

Краснодарский край: **+7(918)465-66-44**

США, Майами, Флорида: **+1(954)274-4435**

Время работы

Понедельник – Суббота: **9:00 - 21:00**
EDT

Воскресенье: **Закрето**

Адрес



Harbour Towne Marina, 850 NE 3rd St,
STE 213, Dania, FL 33004