

OUTTA THE LOOP — NAVIGATOR



Builder: NAVIGATOR

Year Built: 1999

Model: SHELBY

Price: PRICE ON APPLICATION

Location: United States

LOA: 48' 0" (14.63m)

Beam: 15' 0" (4.57m)

Max Draft: 4' 5" (1.35m)

Our experienced yacht broker, Andrey Shestakov, will help you choose and buy a yacht that best suits your needs **Outta The Loop — NAVIGATOR** from our catalogue. Presently, at Shestakov Yacht Sales Inc., we have a wide variety of yachts available on our sale's list. We also work in close contact with all the big yacht manufacturers from all over the world.

If you would like to buy a yacht **Outta The Loop — NAVIGATOR** or would like help answering any questions concerning purchasing, selling or chartering a yacht, please call **+1(954)274-4435**

TABLE OF CONTENTS

TABLE OF CONTENTS	2
SPECIFICATIONS	8
Overview	8
Basic Information	8
Dimensions	8
Speed, Capacities and Weight	8
Accommodations	9
Hull and Deck Information	9
Engine Information	9
DETAILED INFORMATION	10
MAIN DESCRIPTION	10
Navigator Classic 4800 Accommodations	10
Navigator Classic 4800 Main Salon	10
Navigator Classic 4800 Galley	10
Navigator Classic 4800 Staterooms	11
Navigator Classic 4800 Hull and Deck	11
Navigator Classic 4800 Mechanical Systems	11
NAVIGATOR CLASSIC 4800 NAVIGATION AND ELECTRONICS	11
Navigator Classic 4800 Exclusions	12
DISCLAIMER	12
Exclusions	12
Disclaimer	12
PHOTOS	13
02	13
01	13
03	13
04	13
05	13

06	13
07	14
10	14
12	14
11	14
13	15
15	15
16	15
17	15
19	16
18	16
20	16
21	16
22	17
23	17
25	17
26	17
27	18
28	18
29	18
30	18
31	19
32	19
34	19
33	19
35	19
36	19
37	20
38	20

39	20
40	20
41	20
42	20
43	21
44	21
45	21
46	21
48	21
47	21
50a	22
50b	22
51	22
52	22
55	22
56	22
57	23
60	23
62	23
61	23
63	23
64	23
65	24
66	24
68	24
67	24
70	25
69	25
71	25

72	25
74	25
75	25
77	26
76	26
79	26
78	26
80	27
81	27
82	27
83	27
84	27
85	27
86	28
87	28
88	28
89	28
91	28
90	28
92	29
93	29
94	29
95	29
96	30
97	30
98	30
99	30
104	30
105	30

106	31
107	31
109	31
108	31
110	31
111	31
112	32
113	32
114	32
115	32
116	32
117	32
119	33
118	33
120	33
121	33
122	34
123	34
125	34
124	34
127	35
126	35
129	35
128	35
130	36
131	36
132	36
133	36
134	37

135	37
136	37
137	37
CONTACTS	38
Contact details	38
Telephones	38
Office hours	38
Address	38

SPECIFICATIONS

Overview

Outta The Loop is a pristine pilothouse motor yacht with the comforts and features of boats costing much more, as you will instantly spot when you see the Bird's Eye Maple woodwork on the interior. It has an open and airy feeling, with its full beam salon and home-size galley with upright refrigerator/freezer and tons of storage. Up two steps is a U-shaped dinette/watch berth in the pilothouse, with door to deck and bow access. The aft cockpit allows for easy boarding from the swim platform through a gate or assistance by steps on each side, plus a generous leisure area and/or al fresco dining area. And the double doors from the cockpit to the salon create a beautiful transition from the outside in. The master suite is beautiful and tidy, with generous lighting, a walk-around offset queen, and hidden storage just about everywhere, including cubbies for washer and dryer. And the master head, with separate shower, has a smart mirrored ceiling that makes it seem huge! The guest cabin also boasts a generous head with separate shower, comfy queen bed, and storage all about. But what truly sets it apart is its outstanding handling characteristics and smooth, comfortable ride. The pilothouse has an efficient layout for operating the vessel, and the flybridge has an unobstructed view and plenty of room for entertaining.

Basic Information

Category: SHELBY

Sub Category: Pilothouse

Model Year: 1999

Year Built: 1999

Country: United States

Dimensions

LOA: 48' 0" (14.63m)

Beam: 15' 0" (4.57m)

Max Draft: 4' 5" (1.35m)

Clearance: 19' 0" (5.79m)

Speed, Capacities and Weight

Water Capacity: 100 Gallons

Holding Tank: 70 Gallons

Fuel Capacity: 550 Gallons

Accommodations

Total Cabins: 2

Total Berths: 2

Total Heads: 2

Hull and Deck Information

Hull Material: Fiberglass

Engine Information

Engines: 2

Manufacturer: Volvo

Model: TAMD 63P

Engine Type: Inboard

Fuel Type: Diesel

DETAILED INFORMATION

MAIN DESCRIPTION

Outta The Loop is a pristine pilothouse motor yacht with the comforts and features of boats costing much more, as you will instantly spot when you see the Bird's Eye Maple woodwork on the interior. It has an open and airy feeling, with its full beam salon and home-size galley with upright refrigerator/freezer and tons of storage. Up two steps is a U-shaped dinette/watch berth in the pilothouse, with door to deck and bow access. The aft cockpit allows for easy boarding from the swim platform through a gate or assistance by steps on each side, plus a generous leisure area and/or al fresco dining area. And the double doors from the cockpit to the salon create a beautiful transition from the outside in. The master suite is beautiful and tidy, with generous lighting, a walk-around offset queen, and hidden storage just about everywhere, including cubbies for washer and dryer. And the master head, with separate shower, has a smart mirrored ceiling that makes it seem huge! The guest cabin also boasts a generous head with separate shower, comfy queen bed, and storage all about. But what truly sets it apart is its outstanding handling characteristics and smooth, comfortable ride. The pilothouse has an efficient layout for operating the vessel, and the flybridge has an unobstructed view and plenty of room for entertaining.

Navigator Classic 4800 Accommodations

Two private staterooms with queen beds and ensuite heads
 Custom Ethan Allen Air Dream pullout sofa in salon (queen)
 3 Marine Air reverse cycle 1600 BTU air conditioning units
 12 volt fans in all rooms
 Screen doors to aft deck, pilothouse, and flybridge
 Screen windows on all port lights and port side window
 Central Vacuum system
 Custom wooden blinds in main salon and pilot house

Navigator Classic 4800 Main Salon

Custom free-standing furnishings
 Sharp Aquos flat panel 19" hi-def TV (2015)
 Panasonic DVD player
 KVH3 Satellite trac vision
 Alpine stereo with volume controls throughout boat
 Panoramic view of the water
 Accent rope lighting in soffit

Navigator Classic 4800 Galley

Norcold upright AC/DC refrigerator/freezer (new 2019)
 Force 10 Glass cooktop stove with sea rails (new 2018)
 Contoure microwave/convection oven (new 2019)
 U-Line under counter ice maker (new 2015)
 Deep double sink with oiled bronze pullout sprayer faucet and garbage disposal
 Electrical outlets for countertop appliances
 Loads of drawers and cabinets, sliding glass dish/glass cabinet

Navigator Classic 4800 Staterooms

MASTER: Magic Chef clothes washer in lighted cabinet Separate clothes dryer Sharp Aquos flat panel HDTV with storage behind Stereo - independent or whole house Custom Handcraft queen size mattress w/hinge 6 large under bed drawers Built in night stands, reading lights 4 Cedar lined hanging and storage lockers Accent rope lighting MASTER ENSUITE HEAD: Glass enclosed stall shower New shower head 2020 Vacu Flush head Full length mirror on door Overhead mirror Under sink storage cabinet, mirrored above sink cabinet VIP: Custom Handcraft queen size mattress, hinged Large cedar lined hanging locker with storage locker underneath 3 drawers, large storage cabinet 2 overhead storage lockers Under-bed drawers Stereo speakers with volume control VIP ENSUITE HEAD: Stall shower with glass door Vacu Flush head Mirrored overhead 12 volt custom light bar Storage behind sliding mirrors Under sink storage Vertical storage cabinet STATEROOM COMPANIONWAY: Large hanging locker with storage for central vac hose & attachments Additional storage shelf

Navigator Classic 4800 Hull and Deck

Bottom paint 2018 Westmar bow AND STERN thrusters Brower Systems 800 pound dinghy crane Complete set of canvas covers for aft deck and flybridge Fender baskets Glendenning shore cord management system Ghost alarm, high water, battery, motion, entry doors, smoke, and carbon monoxide Deluxe corrosion control system Bronze Perko thru hulls Johnson bilge pumps (2 Automatic/manual) Muir anchor windlass with Rocna Vulcan anchor, 100 ft of new chain in Apr 2020 Fortress aluminum FX55 anchor Anchor wash down on bow Raw water deck wash down Dockside water connection Custom fitted SeaDek flooring on aft deck and flybridge, new Jan 2020 Aft swim platform with fresh water shower Stainless steel collapsible swim ladder Cockpit table with 4 chairs Magma grill Fish cleaning station Life Sling man overboard ring and throw line 4-person liferaft (due for re-certification, conveyed as is) Bowmar foredeck hatch Fishing rod holders Evinrude 25 HP E-tech outboard w/electric start & tilt

Navigator Classic 4800 Mechanical Systems

Kohler 9EOZ 9 kw generator (6240 hrs) FCI Aquamiser watermaker IN SERVICE Nutone central vac Vacuflush toilets Raritan 20 gallon water heater 12 volt DC service and 50 amp 110 volt AC service Glendenning power cord management system Volvo turbos and exhaust elbows replaced July 2017 ZF transmissions model IRM22A-1 (stb replaced Dec 2015) Tides Marine dripless shaft seals Racor fuel filters and secondary Volvo filters AGM batteries (new 2016) Battery isolator Freedom 25 inverter/charger Xantrex 1000 inverter/battery system, monitor and control panel Marine Air AC/heat Separate bow thruster batteries with charger

NAVIGATOR CLASSIC 4800 NAVIGATION AND ELECTRONICS

Garmin 3210 GPS w/24-mile Radar Raytheon Raypilot autopilot Garmin 7612 chart plotter -

PilothouseGarmin 7610 chart plotter - FlybridgeRaymarine Tri-data - speed, depth, log, tempICOM M330 VHF Bennett trim tabsGlendenning synchronizerJabsco searchlight

Navigator Classic 4800 Exclusions

Liferaft is outside certification dates and will be removed or conveyed as is as buyer choosesAll personal items such as clothing and linens/towelsFishing tackle, cooler, fish bag and snorkeling gearKitchen utensils, dishes, pots, pans, small appliancesPersonal devices, laptop, binocularsModel boatFolding bicyclesTools not proprietary to boat

DISCLAIMER

The Company offers the details of this vessel in good faith but cannot guarantee or warrant the accuracy of this information nor warrant the condition of the vessel. A buyer should instruct his agents, or his surveyors, to investigate such details as the buyer desires validated. This vessel is offered subject to prior sale, price change, or withdrawal without notice.

Exclusions

Owner's personal belongings.

Disclaimer

The Company offers the details of this vessel or yacht in good faith but cannot guarantee or warrant the accuracy of this information nor warrant the condition of the vessel. A buyer should instruct his representatives, agents, or his surveyors, to investigate such details as the buyer desires validated. This vessel or yacht is offered subject to prior sale, price change, or withdrawal without notice.

PHOTOS

01



02



03



04



05



06



07



10



12



11



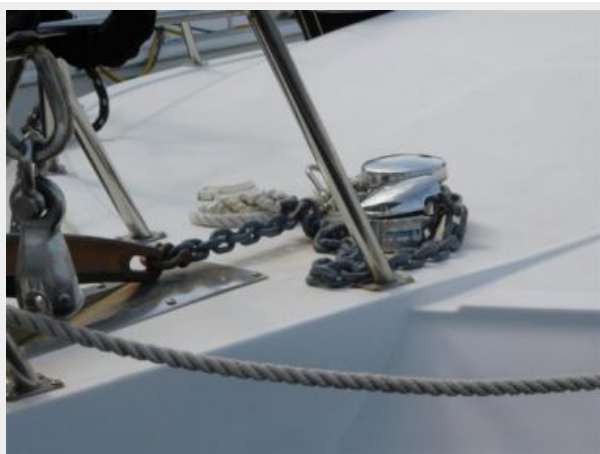
13



15



16



17



18



19



20



21



22



23



25



26



27



28



29



30



31



32



33



34



35



36



37



38



39



40



41



42



43



44



45



46



47



48



50a



50b



51



52



55



56



57



60



61



62



63



64



65



66



67



68



69



70



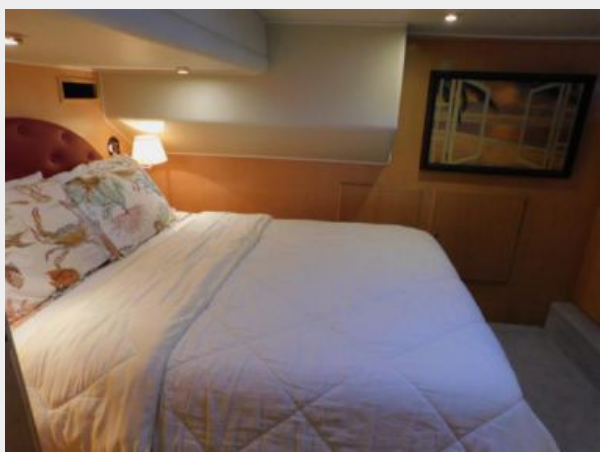
71



72



74



75



76



77



79



78



80



81



82



83



84



85



86



87



88



89



91



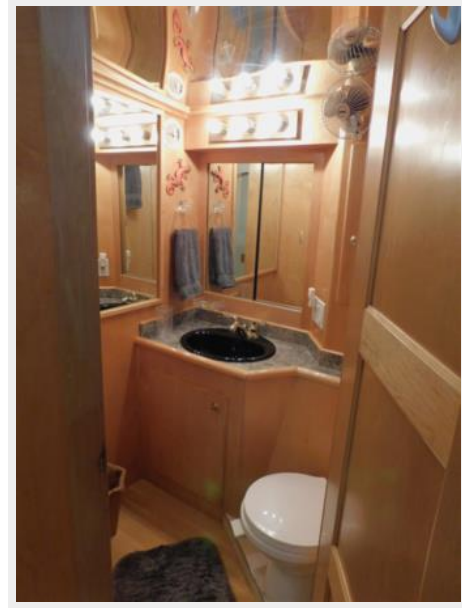
90



92



93



94



95



96



97



98



99



104



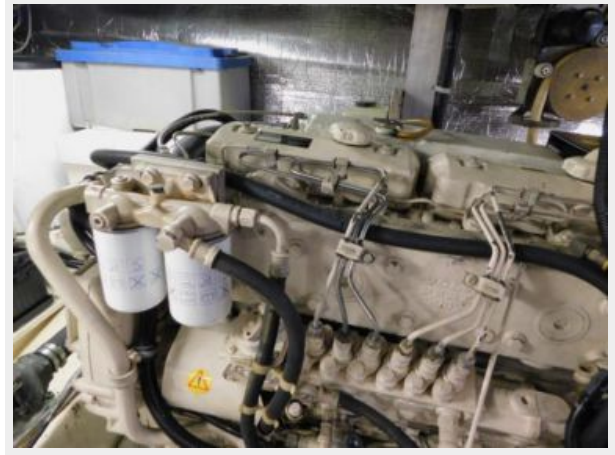
105



106



107



108



109



110



111



112



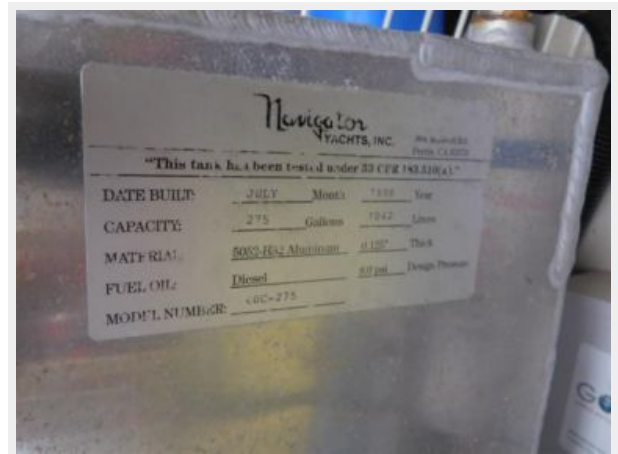
113



114



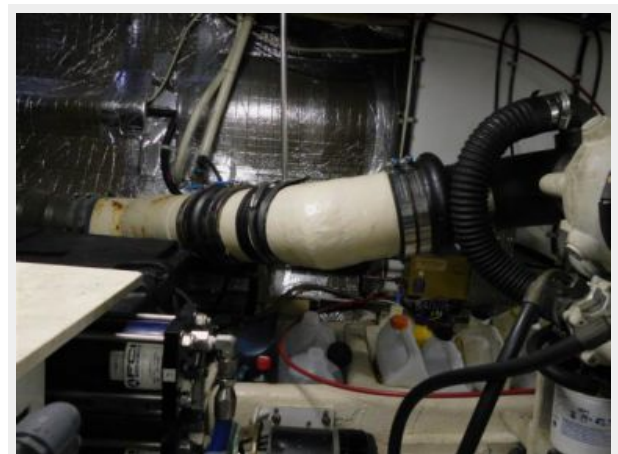
115



116



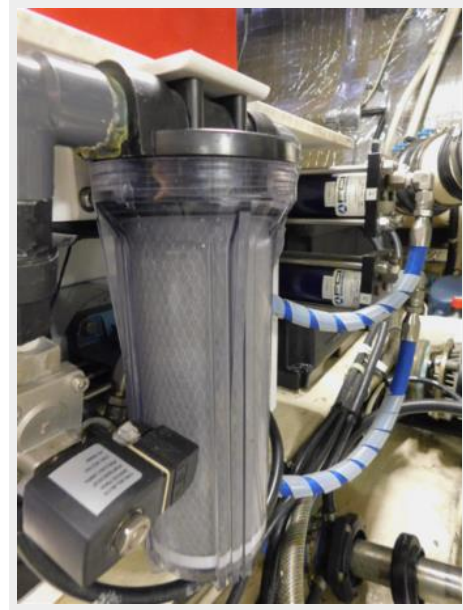
117



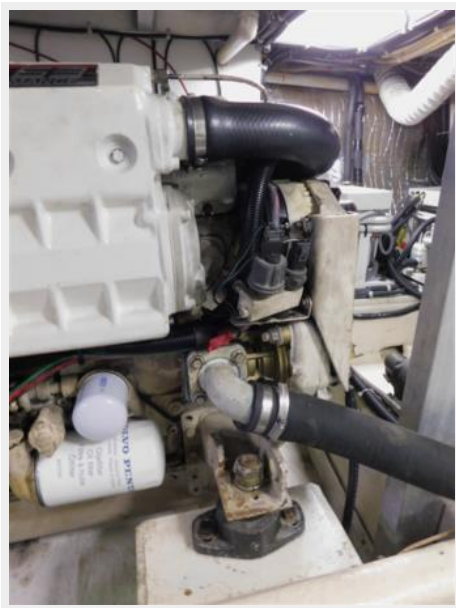
118



119



120



121



122



123



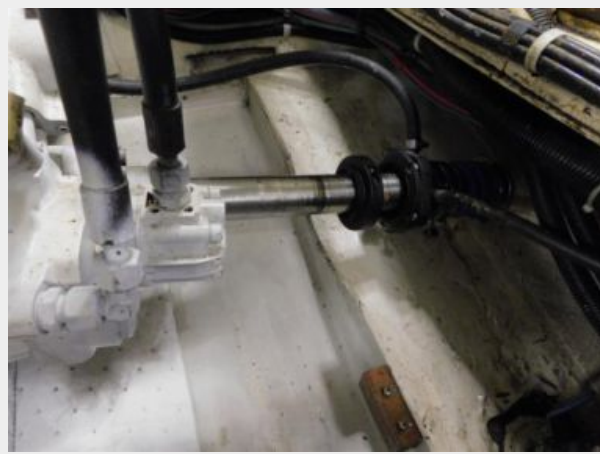
125



124



126



127



129



128



130



131



132



133



134



135



136



137



CONTACTS

Andrey Shestakov, leading yacht broker of the sales department of Shestakov Yacht Sales Inc. Shestakov Yacht Sales Inc., the official representative of the Miami/Fort Lauderdale FL headquarters.

Contact details

Email: andrey@shestakovyachtsales.com

Web: shestakovyachtsales.com/en/

Telephones

USA: +1(954)274-4435

Office hours

Monday – Saturday: **9:00 - 21:00** EDT

Sunday: **closed**

Address



Harbour Towne Marina, 850 NE 3rd St,
STE 213, Dania, FL 33004