

## WORLD CAT 325DC — WORLD CAT



**Builder:** WORLD CAT

**Year Built:** 2021

**Model:** Catamaran

**Price:** PRICE ON APPLICATION

**Location:** United States

**LOA:** 32' 2" (9.80m)

**Beam:** 10' 6" (3.20m)

**Min Draft:** 1' 4" (0.41m)

**Cruise Speed:** 21.0292250564 Kts. (24 MPH)

**Max Speed:** 38.9301356416 Kts. (45 MPH)

Our experienced yacht broker, Andrey Shestakov, will help you choose and buy a yacht that best suits your needs World Cat 325DC — WORLD CAT from our catalogue. Presently, at Shestakov Yacht Sales Inc., we have a wide variety of yachts available on our sale's list. We also work in close contact with all the big yacht manufacturers from all over the world.

If you would like to buy a yacht World Cat 325DC — WORLD CAT or would like help answering any questions concerning purchasing, selling or chartering a yacht, please call +1(954)274-4435

# TABLE OF CONTENTS

TABLE OF CONTENTS	2
SPECIFICATIONS	5
Overview	5
Basic Information	5
Dimensions	5
Speed, Capacities and Weight	5
Accommodations	5
Hull and Deck Information	6
Engine Information	6
DETAILED INFORMATION	7
BOW	7
PORTSIDE CONSOLE BERTH	7
STARBOARD HEAD AREA	7
HELM	7
BRIDGE DECK	7
COCKPIT	8
ADDITIONAL OPTIONS ADDED	8
Exclusions	8
Disclaimer	8
PHOTOS	9
325DC 1	9
325DC 5	9
File_000(15)	9
325DC & 280CC 1	9
280cc & 325DC	9
World-Cat_325DC__0001-1024x731 (1)	9
World-Cat_325DC__0001-1024x731	10
World-Cat_325DC__0002-1024x731	10

---

World-Cat_325DC__0004-1024x731	10
World-Cat_325DC__0005-1024x731 - Copy	10
World-Cat_325DC__0005-1024x731	10
World-Cat_325DC__0006-1024x731 - Copy	10
World-Cat_325DC__0007-1024x732 - Copy	11
World-Cat_325DC__0017-1024x683	11
World-Cat_325DC__0019-1024x731	11
World-Cat_325DC__0018-1024x683	11
World-Cat_225DC__0025-1024x732	11
World-Cat_325DC__0020-1024x683	11
World-Cat_225DC__0034-1024x731	12
119292138_3321459927921083_3034159629566411591_o	12
World-Cat_225DC__0024-1024x732	12
World-Cat_225DC__0023-1024x683	12
119555639_3321459924587750_7861136768275977843_o	12
World-Cat_325DC__0012-1024x731	12
World-Cat_225DC__0026-1024x683	13
World-Cat_225DC__0031-1024x683	13
World-Cat_325DC__0022-683x1024	13
World-Cat_225DC__0028-1024x683	13
World-Cat_225DC__0030-1024x683	13
World-Cat_225DC__0033-1024x683	13
320dc-details-5766-683x1024	14
World-Cat_325DC__0021-1024x732	14
World-Cat_325DC__0015-1024x731	14
World-Cat_225DC__0032-1024x683	14
320dc-details-5761-683x1024	14
320dc-details-5724-1024x683	14
320dc-details-2945-1024x683	15

---

---

320dc-details-2938-1024x683	15
World-Cat_325DC__0016-1024x683	15
CONTACTS	16
Contact details	16
Telephones	16
Office hours	16
Address	16

# SPECIFICATIONS

---

## Overview

---

The 2021 32' 2" WORLD CAT Catamaran World Cat 325DC is a boat for sale located in San Diego, California, USA. This beautiful catamaran comes with comfort and luxury. Versatility and ruggedness are key factors of this boat. A spacious yacht, your home away from home for your family, and a high-performance and fun sport boat for you. The 325DC catamaran offers it all – with style. With rakish lines and attention to detail, the 325DC 32' 2" boat is designed to look good while bringing you and your family years of fun and dependable service. And, since it's a World Cat boat brand, you can count on a smoother, better ride in virtually any conditions. Contact the yacht broker to receive more information or schedule a showing of this 2021 32' 2" WORLD CAT Catamaran World Cat 325DC yacht for sale in San Diego, California, USA today!

## Basic Information

---

**Category:** Catamaran

**Sub Category:** Cruiser

**Model Year:** 2021

**Year Built:** 2021

**Country:** United States

## Dimensions

---

**LOA:** 32' 2" (9.80m)

**Beam:** 10' 6" (3.20m)

**Min Draft:** 1' 4" (0.41m)

## Speed, Capacities and Weight

---

**Cruise Speed:** 21.0292250564 Kts. (24 MPH)

**Max Speed:** 38.9301356416 Kts. (45 MPH)

**Water Capacity:** 45 Gallons

**Holding Tank:** 15 Gallons

**Fuel Capacity:** 279 Gallons

## Accommodations

---

**Total Berths:** 1

**Total Heads:** 1

---

## Hull and Deck Information

---

**Hull Material:** Fiberglass

## Engine Information

---

**Engines:** 2

**Manufacturer:** Yamaha

**Model:** 300 HP

**Engine Type:** Outboard

**Fuel Type:** Gas/Petrol

---

## DETAILED INFORMATION

---

### BOW

---

• Pro Series free-fall windlass w/ 300 line, 15 chain, 22 lb. anchor, & foot switches• Offset walkway between consoles w/ seating for 6 on twin double-wide lounge seats. Seats have angled cushioned backrests & headrests, flip-down armrests on inboard side; new sliding windshield• Port & starboard gunwale inserts w/ (3) cup holders, storage bins, & speakers• Freshwater hose coil at anchor locker• Storage box under portside forward seat• 300 qt. insulated storage starboard side• Bow anchor lockers• (4) flush-mounted pull-up cleats & bow lights• Sunpad filler cushions that store

### PORTSIDE CONSOLE BERTH

---

• Tinted port lights topside & inboard• Stylish interior w/ two-tone vinyl headliner & cabin sole• Aft-facing seating that folds into 72 long berth (54 wide) w/ storage underneath• Overhead LED lighting & reading lights• Microwave, HD LED TV w/ DVD & inset electrical panel in aft bulkhead• Rod storage• Cedar-lined hanging locker

### STARBOARD HEAD AREA

---

• Marine head w/ 15 gal. holding tank w/ overboard discharge, teak grid seat, shower, sump, sink, & Corian® Gray Onyx counter• Starboard aft medicine cabinet storage• Fresh water 45 gal. tank & 6 gal. water heater

### HELM

---

• Companionway wind door• Electronics mounting area for (1) 15" screen or (2) 12 screens, (2) drink holders, & color-coordinated custom dash panel screen, compass, lighted toggle switches, and breaker board in the head compartment• Premium marine entertainment system w/ (6) JL Audio speakers, remote, & Bluetooth• Built-in foot rest under dash panel• Fire extinguisher boxes port & starboard• Adjustable helm bench seat w/ inboard pull-up armrest, & single bolster system• Vinyl-wrapped cup holder w/ USB outlet & space for cell phone storage• Power assist steering w/ tilt wheel• 12,000 BTU AC / heat unit for berth, head, & cockpit air• Pantograph-style, heavy-duty waterproof windshield wiper w/ rinse• Optimus Electronic Steering System

### BRIDGE DECK

---

• Raised bridge deck to accommodate centerline 250 qt. fish box compartment• Portside cushioned seating for 4 on (2) fiberglass mounting pods, converts to single aft-facing dual lounge, dual-facing seats, or dual seats facing either fore or aft• Dry storage/bulk storage under portside seat pods. Forward seat storage drawer opens inboard. Forward seat has bulk storage• Removable wall-mounted table at cockpit & bow seats• Starboard side entertainment center w/ refrigerator, sink, 1,300W electric grill w/ inverter, & utility drawers• Fiberglass hardtop, (2) forward-facing fresh air hatches, moonroof centerline (manual operation),LED spreader & down lights

---

## COCKPIT

---

• Aft portside cockpit hot & cold shower• Cockpit hull side entry door• Port storage cabinet in sidewall• (4) gunwale-mounted rod holders• Aft starboard transom seating for 2 adults. Seat box opens to reveal storage compartment w/ storage box for tool kit, dive tank storage, & mounting area for optional 4.2kW diesel generator• Offset port transom walk-through to aft deck• 35 gal. live well• Raw water washdown• 4-battery select switch panel w/ engine battery parallel• Galvanic isolator system• Shore power system (30 amps)• Fischer Panda® 4.2kW diesel generator w/ 10 gal. tank• Transom door w/ latch• User-friendly On-Ramp™ swim ladder & swim platform

---

## ADDITIONAL OPTIONS ADDED

---

**Engine Packages**• Yamaha 300 HP 4-strokes w/ CL7 touchscreen display (Yamaha pearlescent white)

**Canvas**• High grade curtain package w/ Strataglass™ (sides & drop curtain)• Woven sea grass flooring w/ rubber backing & S.S. snaps

**Electronics**• Single Garmin GPSMAP® 8616xsv 16 multi-touch widescreen Chartplotter / Sonar Combo, Airmar B175M transducer, dark-tinted acrylic dash, Garmin 110 VHF w/ 8 antenna• LED underwater lights (blue)

**Top**• Hardtop underside color: Hermosa Blue• Taylor Made Products™ bow shade• SureShade® manually retractable hardtop shade w/ Sunbrella® canvas (Steel Gray)

**Hull Colors**• Two-tone hull color: Hermosa Blue

**Bootstriping**• Single color top & bottom: Black

---

## Exclusions

---

Owner's personal belongings.

---

## Disclaimer

---

The Company offers the details of this vessel or yacht in good faith but cannot guarantee or warrant the accuracy of this information nor warrant the condition of the vessel. A buyer should instruct his representatives, agents, or his surveyors, to investigate such details as the buyer desires validated. This vessel or yacht is offered subject to prior sale, price change, or withdrawal without notice.



# PHOTOS

**325DC 1**



**325DC 5**



**File\_000(15)**



**325DC & 280CC 1**



**280cc & 325DC**



**World-Cat\_325DC\_\_0001-1024x731 (1)**



World-Cat\_325DC\_\_0001-1024x731



World-Cat\_325DC\_\_0002-1024x731



World-Cat\_325DC\_\_0004-1024x731



World-Cat\_325DC\_\_0005-1024x731 - Copy



World-Cat\_325DC\_\_0005-1024x731



World-Cat\_325DC\_\_0006-1024x731 - Copy



World-Cat\_325DC\_\_0007-1024x732 - Copy



World-Cat\_325DC\_\_0017-1024x683



World-Cat\_325DC\_\_0018-1024x683



World-Cat\_325DC\_\_0019-1024x731



World-Cat\_325DC\_\_0020-1024x683



World-Cat\_225DC\_\_0025-1024x732



World-Cat\_225DC\_\_0034-1024x731

119292138\_3321459927921083\_3034159629566411591\_o



World-Cat\_225DC\_\_0023-1024x683

World-Cat\_225DC\_\_0024-1024x732



119555639\_3321459924587750\_7861136768275977843\_o

World-Cat\_325DC\_\_0012-1024x731



World-Cat\_225DC\_\_0026-1024x683



World-Cat\_225DC\_\_0031-1024x683



World-Cat\_325DC\_\_0022-683x1024



World-Cat\_225DC\_\_0028-1024x683



World-Cat\_225DC\_\_0030-1024x683



World-Cat\_225DC\_\_0033-1024x683



320dc-details-5766-683x1024



World-Cat\_325DC\_\_0021-1024x732



World-Cat\_225DC\_\_0032-1024x683



World-Cat\_325DC\_\_0015-1024x731



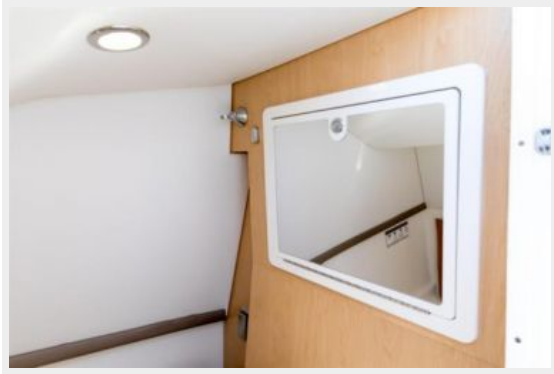
320dc-details-5761-683x1024



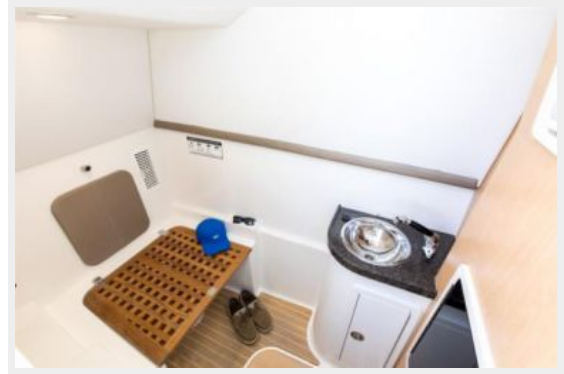
320dc-details-5724-1024x683



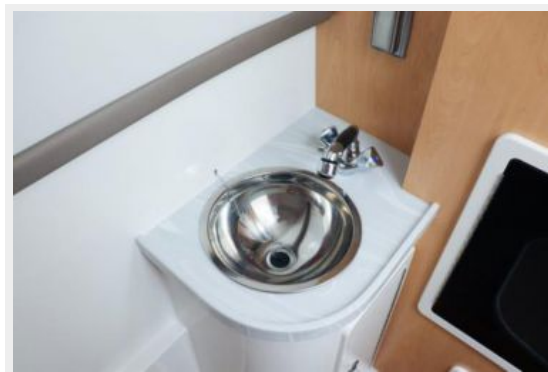
320dc-details-2945-1024x683



320dc-details-2938-1024x683



World-Cat\_325DC\_\_0016-1024x683



# CONTACTS

---

Andrey Shestakov, leading yacht broker of the sales department of Shestakov Yacht Sales Inc. Shestakov Yacht Sales Inc., the official representative of the Miami/Fort Lauderdale FL headquarters.

## Contact details

---

Email: [andrey@shestakovyachtsales.com](mailto:andrey@shestakovyachtsales.com)

Web: [shestakovyachtsales.com/en/](http://shestakovyachtsales.com/en/)

## Telephones

---

USA: +1(954)274-4435

## Office hours

---

Monday – Saturday: 9:00 - 21:00 EDT

Sunday: **closed**

## Address

---



Harbour Towne Marina, 850 NE 3rd St,  
STE 213, Dania, FL 33004