

SERENITY — HATTERAS



Builder: HATTERAS

Year Built: 1988

Model: Motor Yacht

Price: PRICE ON APPLICATION

Location: United States

LOA: 70' 0" (21.34m)

Beam: 18' 2" (5.54m)

Min Draft: 5' 6" (1.68m)

Max Draft: 6' 0" (1.83m)

Cruise Speed: 12 Kts. (14 MPH)

Max Speed: 18 Kts. (21 MPH)

Our experienced yacht broker, Andrey Shestakov, will help you choose and buy a yacht that best suits your needs **Serenity — HATTERAS** from our catalogue. Presently, at Shestakov Yacht Sales Inc., we have a wide variety of yachts available on our sale's list. We also work in close contact with all the big yacht manufacturers from all over the world.

If you would like to buy a yacht **Serenity — HATTERAS** or would like help answering any questions concerning purchasing, selling or chartering a yacht, please call **+1(954)274-4435**

TABLE OF CONTENTS

TABLE OF CONTENTS	2
SPECIFICATIONS	7
Overview	7
Basic Information	7
Dimensions	7
Speed, Capacities and Weight	7
Accommodations	8
Hull and Deck Information	8
Engine Information	8
DETAILED INFORMATION	9
MAIN DESCRIPTION	9
70' Hatteras Overview	9
70' Hatteras Vessel Walkthrough	9
70' Hatteras Accommodations	10
70' Hatteras Salon	10
70' Hatteras Galley	10
70' Hatteras Dining	11
70' Hatteras Master Stateroom	11
70' Hatteras Mid Guest Stateroom	11
70' Hatteras Port Guest Stateroom	11
70' Hatteras Forward Guest Stateroom	11
70' Hatteras Laundry	12
70' Hatteras Pilothouse	12
70' Hatteras Flybridge	12
70' Hatteras Aftdeck	12
70' Hatteras Audio/Visual Equipment	12
70' Hatteras Electronics	12
70' Hatteras Electrical System	13

70' Hatteras Engine/Mechanical Equipment	13
70' Hatteras Deck Equipment	14
70' Hatteras Tender	15
70' Hatteras Safety and Fire Protection	15
70' Hatteras Exclusions	16
70' Hatteras Disclaimer	16
Exclusions	16
Disclaimer	16
PHOTOS	17
1 Serenity 70' 1988 Hatteras	17
2	17
4	17
3	17
5	17
6	17
8	18
7	18
9	18
10	18
12	19
11	19
13	19
14	19
15	19
16	19
17	20
18	20
19	20
20	20

21	20
22	20
23	21
24	21
25	21
26	21
27	21
28	21
29	22
30	22
31	22
32	22
33	22
34	22
35	23
36	23
37	23
38	23
39	23
40	23
41	24
42	24
43.1	24
43	24
44	24
45	24
47	25
46	25
48	25

49	25
50	26
51	26
52	26
53	26
55	27
54	27
56	27
57	27
58	28
59	28
60	28
61	28
62	29
63	29
64	29
65	29
66	29
67	29
68	30
69	30
70	30
71	30
72	30
73	30
74	31
75	31
76	31
77	31

78	31
79	31
80	32
81	32
83	32
82	32
84	32
85	32
86	33
87	33
88	33
89	33
CONTACTS	34
Contact details	34
Telephones	34
Office hours	34
Address	34

SPECIFICATIONS

Overview

Serenity is a 1988 70' Hatteras motoryacht in very nice condition. She is captain maintained with numerous upgrades. She offers twin Detroit Diesel 870 HP main engines, two Onan 20 kW generators, Naiad stabilizer system with upgraded 9' fins, new anchor windlass, some updated electronics, clean, uncluttered interior, 4 stateroom 5 head layout with an enclosed shower in each head (the master stateroom has a walk-through shower between his and her heads) and a massive full beam master stateroom aft.

Basic Information

Category: Motor Yacht

Model Year: 1988

Year Built: 1988

Country: United States

Dimensions

LOA: 70' 0" (21.34m)

Beam: 18' 2" (5.54m)

Min Draft: 5' 6" (1.68m)

Max Draft: 6' 0" (1.83m)

Clearance: 18' 5" (5.61m)

Speed, Capacities and Weight

Cruise Speed: 12 Kts. (14 MPH)

Max Speed: 18 Kts. (21 MPH)

Displacement: 107880 Pounds

Water Capacity: 350 Gallons

Holding Tank: 180 Gallons

Fuel Capacity: 1596 Gallons

Accommodations

Total Cabins: 4

Total Berths: 4

Total Heads: 5

Hull and Deck Information

Hull Material: Fiberglass

Engine Information

Engines: 2

Manufacturer: Detroit Diesel

Model: 12v71 TA

Engine Type: Inboard

Fuel Type: Diesel

DETAILED INFORMATION

MAIN DESCRIPTION

Serenity is a 1988 70' Hatteras motoryacht in very nice condition. She is captain maintained with numerous upgrades. She offers twin Detroit Diesel 870 HP main engines, two Onan 20 kW generators, Naiad stabilizer system with upgraded 9' fins, new anchor windlass, some updated electronics, clean, uncluttered interior, 4 stateroom 5 head layout with an enclosed shower in each head (the master stateroom has a walk-through shower between his and her heads) and a massive full beam master stateroom aft.

70' Hatteras Overview

Serenity is a 1988 70' Hatteras motoryacht in very nice condition. She is captain maintained with numerous upgrades. She offers twin Detroit Diesel 870 HP main engines, two Onan 20 kW generators, Naiad stabilizer system with upgraded 9' fins, new anchor windlass, some updated electronics, clean, uncluttered interior, 4 stateroom 5 head layout with an enclosed shower in each head (the master stateroom has a walk-through shower between his and her heads) and a massive full beam master stateroom aft.

70' Hatteras Vessel Walkthrough

From the fiberglass swimplatform, you step up a stainless steel and Starboard ladder to the aftdeck. There is then a door to the salon starboard forward. Once inside the salon, you will find the large flat screen TV on a lift in a cabinet starboard aft, wrap-around seating with storage port aft, a table with three stools, lounge chair and end table to port, a wet bar forward, a settee with table to starboard and a stairwell to the engine room and master stateroom starboard forward. The full-beam master stateroom with two separate heads and a walk-thru shower is aft. The stand-up engine room is amidships. Back to the salon and walk forward on the same level into the full-beam galley and then the pilothouse. The pilothouse has a side deck access door on each side, stainless steel and teak ladder to the flybridge and then stairs to guest staterooms starboard forward. Below decks forward, you have a VIP guest stateroom with a queen size berth and ensuite head with enclosed shower aft, a guest stateroom to port with single side by side berths, a guest head with enclosed shower to starboard and a guest stateroom with over/under bunks and an ensuite head with enclosed shower forward.

The headroom in the salon is 6'4", 6'3" in the master stateroom, 6'4" in the master stateroom shower, 6'6" in the engine room, 6'6" in the galley, 6'10" in the pilothouse, 6'11" on the flybridge, 6'8" in the forward guest stateroom, 6'3" in the forward guest stateroom shower, 6'7" in the port guest stateroom, 6'2" in the starboard guest shower and 6'3" in the mid guest stateroom and shower. The master stateroom berth is 6'7" long, the forward guest stateroom berths are 6'8"

long, the port guest stateroom berths are 6'7" long and the mid guest stateroom berth is 6'6" long.

70' Hatteras Accommodations

Serenity offers a massive, full-beam master stateroom aft with a centerline king size berth and two separate heads with a walk-through shower, a mid-guest stateroom amidships with a queen size berth and ensuite head with enclosed shower, a guest stateroom port forward with side by side single berths, a guest head with enclosed shower starboard forward and a guest stateroom all the way forward with over/under bunks and an ensuite head with enclosed shower.

70' Hatteras Salon

The huge salon offers wrap-around seating with storage and ottoman port aft, a large flat screen TV on a lift in cabinetry starboard aft, a settee and table to starboard, a high-top table with three stools, lounge chair and end table to port, a wet bar with stainless steel sink, stainless steel wine cooler, U-Line stainless steel ice maker and storage forward, carpet, opening side windows with wood blinds, a stairwell to the engine room and master stateroom starboard forward, large aft window and a teak and glass door to the aftdeck. The salon windows were renewed in 2018.

70' Hatteras Galley

The full beam galley is between the pilothouse and salon on the same level.

- Walk-in pantry to starboard
- 2 X Premium under counter freezers in the pantry
- Counter-top and storage to starboard
- Frigidaire stainless steel refrigerator/freezer with an ice machine (2020)
- GE stainless steel oven
- Whirlpool stainless steel microwave/convection oven
- Whirlpool 5-burner electric ceramic cooktop
- Kitchenaid stainless steel dishwasher
- Large sink with a Grohe faucet
- In-Sink-Erator disposal
- Opening side window with screen (2018)

- Teak & holly sole
- Storage drawers and cabinets
- U-Line stainless steel icemaker in the salon
- Stainless steel wine cooler in the salon
- 2 X U-Line under counter refrigerators on the flybridge (2019)
- Solaire stainless steel BBQ grill on the flybridge

70' Hatteras Dining

Dining space is available at both salon tables.

70' Hatteras Master Stateroom

The massive, full beam master stateroom offers a centerline king size berth, nightstands, reading lights, walk-in closet, storage drawers and cabinets, 2 X transom hatches, 6 X portlights, curtains, Sony Bravia flat screen TV and two separate heads with a walk-through shower.

70' Hatteras Mid Guest Stateroom

The mid guest stateroom offers a walk-around queen size berth, carpet, nightstands, reading lights, storage drawers and cabinets, hanging locker, 2 portlights, linen closet in the companionway and an ensuite head with enclosed shower.

70' Hatteras Port Guest Stateroom

The port guest stateroom offers side by side single size berths, hanging locker, shelves, storage drawers, reading lights, carpet, opening window with a screen and a full-length mirror. The guest head with enclosed shower is to starboard.

70' Hatteras Forward Guest Stateroom

The forward guest stateroom offers over/under bunks to starboard, storage cabinetry to port, 2 portlights, reading lights, overhead hatch with a screen, anchor chain locker access, storage cabinets and drawers, hanging locker, full-length mirror, carpet and an ensuite head with enclosed shower.

70' Hatteras Laundry

- Whirlpool stack washer-dryer

70' Hatteras Pilothouse

The pilothouse offers a full helm forward, storage cabinetry port and starboard aft and starboard under the helm, benchseat with storage aft, teak & holly sole, stainless steel & teak ladder to the flybridge starboard aft and a side deck access door on each side. The windshield wipers are presently inoperable.

70' Hatteras Flybridge

The flybridge offers a full helm forward, 2 X helmseats, bimini, non-skid deck, hatch and door to the pilothouse ladder, wetbar with 2 X U-Line stainless steel under-counter refrigerators, storage and Solaire stainless steel BBQ grill, hinged mast, umbrella, large ottoman with storage, wrap-around seating with storage and tender storage aft.

70' Hatteras Aftdeck

The aftdeck offers a non-skid deck, teak cap rails, transom gate, 3/4 overhead, wicker settee and a teak & glass door to the salon.

70' Hatteras Audio/Visual Equipment

- Panasonic flat screen TV on a lift in a cabinet in the salon
- Polk and A/R interior speakers
- Sony Bravia flat screen TV in the master stateroom
- Fusion MS-RA50 stereo in the tender

70' Hatteras Electronics

- Garmin Radar (2017)
- 2 X Garmin GPSMap 41212 multi-function displays in the pilothouse
- Garmin GPSMap 7616 multi-function display on the flybridge

-
- Garmin echomap sv chart plotter/depth sounder in the pilothouse (2017)
 - Garmin depth, wind, speed display in the pilothouse and on the flybridge (2017)
 - Garmin autopilot in the pilothouse and on the flybridge (2017)
 - KVH Azimut 1000 digital compass in the pilothouse
 - Danforth Constellation magnetic compass on the flybridge
 - Standard VHF in the pilothouse
 - Icom IC-M412 VHF on the flybridge
 - Standard Horizon Eclipse DSC+ VHF in the tender
 - Netgear router
 - Wirie Wifi signal booster system

70' Hatteras Electrical System

- Onan 0.0MDL4-3R/30366B 20 kW generator with approximately 2,457 hours
- Onan 0.0MDL4-3R/30366B 20 kW generator with approximately 1,610 hours
- 2 X GE transformers
- LaMarche Constavolt 24 vdc battery charger
- Guest battery switches
- 2 X 50 amp shore power cords
- 2 X Glendinning Cablemaster shore power cord systems

70' Hatteras Engine/Mechanical Equipment

- Twin Detroit Diesel 12va081737 12v71 TA 870 HP main engines with approximately 1,436 hours on port and 1,936 hours on starboard (Block heaters added in 2020)
- ZF BW190 gearboxes
- Teleflex engine controls
- Walker Airsep's on each main engine

-
- VDO gauges in the pilothouse and on the flybridge and mechanical gauges in the engine room
 - Perko and Groco sea strainers
 - Fuel manifold
 - Fuel tank level panel in pilothouse
 - Dual Racor 751000MAX fuel filters with vacuum gauge for each main engine (2019)
 - Racor 500FG fuel filter for each generator (2018)
 - Separ SWK2000/10DG fuel polishing system
 - Groco oil change system
 - Hynautic hydraulic steering system
 - Naiad 254 stabilizer system with upgraded 9' fins (seals replaced in 2019) (Flybridge control inoperable)
 - Bennett trim tabs
 - Dometic 16,000 BTU reverse cycle air conditioning/heating system for the engine room
 - 2 X Marine Air Systems 60,000 BTU reverse cycle air conditioning/heating system chillers and a mixture of Cruisair and Marine Air Systems air handlers
 - Bradford 40 gallon water heater
 - Speedaire air compressor
 - Galley Maid electric fresh water heads
 - New blackwater hoses in 2018
 - New exhaust hoses in 2018
 - Shaft alignment, new Cutlass bearings and propellers tuned in 2017

70' Hatteras Deck Equipment

- Lewmar anchor windlass with foot controls (2019)
- CQR 105 LB anchor
- New pulpit
- Teak cap rails on stainless steel stanchions with a single lifeline

- Non skid decks
- Stainless steel deck hardware
- Foredeck sunpad and seating with storage
- 2 X foredeck deck stowage boxes
- Boarding gate each side
- Stainless steel and Starboard ladder to the swimplatform
- Stainless steel and Starboard swim ladder
- Fiberglass swimplatform with stainless steel pop up cleats
- Hull bottom painted in 2020
- New exterior cushions in 2017

70' Hatteras Tender

- Walker Bay Generation 400 13'1" RIB tender (2012)
- Yamaha 50 HP 4-stroke outboard (2012)
- UMT 1500 LB davit
- New tender cover in 2019

70' Hatteras Safety and Fire Protection

- Kidde CO engine room and generator room fire suppression systems
- Fire extinguishers
- First Alert carbon monoxide detectors
- Kidde smoke detectors
- ACR searchlight
- Kahlenberg horns (2019)
- Lifering
- McMurdo SmartFind EPIRB

- Hatteras systems monitor
- Security camera system

70' Hatteras Exclusions

- Sellers' personal belongings
- Oriental rugs
- Master stateroom Frette bedspread
- Le Creuset grey pots
- Dansk silverware

70' Hatteras Disclaimer

The Company offers the details of this vessel in good faith but cannot guarantee or warrant the accuracy of this information nor warrant the condition of the vessel. A buyer should instruct his agents, or his surveyors, to investigate such details as the buyer desires validated. This vessel is offered subject to prior sale, price change, or withdrawal without notice.

Exclusions

Owner's personal belongings.

Disclaimer

The Company offers the details of this vessel or yacht in good faith but cannot guarantee or warrant the accuracy of this information nor warrant the condition of the vessel. A buyer should instruct his representatives, agents, or his surveyors, to investigate such details as the buyer desires validated. This vessel or yacht is offered subject to prior sale, price change, or withdrawal without notice.

PHOTOS

1 Serenity 70' 1988 Hatteras



2



3



4



5



6



7



8



9



10



11



12



13



14



15



16



17



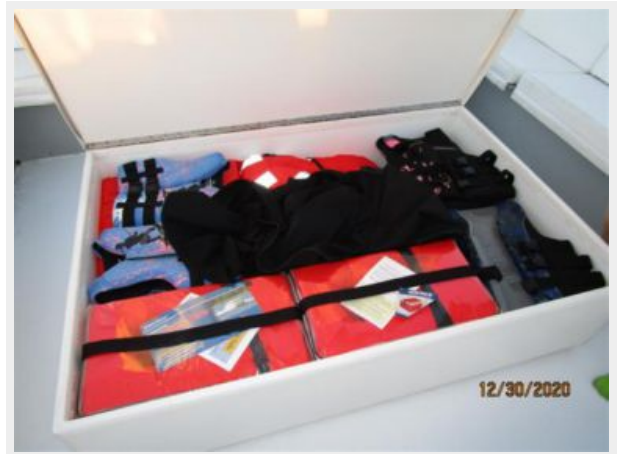
18



19



20



21



22



23



24



25



26



27



28



29



30



31



32



33



34



35



36



37



38



39



40



41



42



43.1



43



44



45



46



47



48



49



50



51



52



53



54



55



56



57



58



59



60



61



62



63



64



65



66



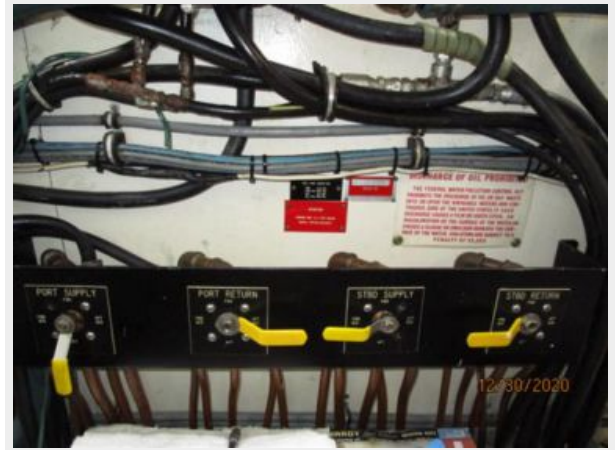
67



68



69



70



71



72



73



74



75



76



77



78



79



80



81



82



83



84



85



86



87



88



89



CONTACTS

Andrey Shestakov, leading yacht broker of the sales department of Shestakov Yacht Sales Inc. Shestakov Yacht Sales Inc., the official representative of the Miami/Fort Lauderdale FL headquarters.

Contact details

Email: andrey@shestakovyachtsales.com

Web: shestakovyachtsales.com/en/

Telephones

USA: +1(954)274-4435

Office hours

Monday – Saturday: **9:00 - 21:00** EDT

Sunday: **closed**

Address



Harbour Towne Marina, 850 NE 3rd St,
STE 213, Dania, FL 33004