

YOUNG GIRL — SUNSEEKER



Судостроитель: [SUNSEEKER](#)

Год постройки: 2006

Модель: Моторная яхта

Цена: **ЦЕНА ЯХТЫ ПО ЗАПРОСУ**

Местонахождение: United States

Длина общая: 50' 0" (15.24m)

Ширина: 15' 1" (4.60m)

Мин. осадка: 3' 11" (1.19m)

Макс. осадка: 4' 1" (1.24m)

Крейс. скорость: 25 Kts. (29 MPH)

Макс. скорость: 30 Kts. (35 MPH)

Купить **Young Girl — SUNSEEKER** а также выбрать подходящую вам яхту из нашего каталога яхт вам поможет опытный яхтенный брокер Андрей Шестаков. На сегодняшний день компания **Shestakov Yacht Sales Inc.** имеет большое количество яхт в собственном списке продаж, а также тесно сотрудничает со всеми крупными яхтенными производителями по всему миру.

Для того чтобы купить яхту **Young Girl — SUNSEEKER** а также проконсультироваться по любому вопросу связанному с покупкой, продажей, чартером яхт позвоните по телефону **+7(918)465-66-44**.

ОГЛАВЛЕНИЕ

ОГЛАВЛЕНИЕ	2
ХАРАКТЕРИСТИКИ	6
Основная информация	6
Размеры	6
Скорость, вместимость и масса	6
Размещение	6
Корпус и палуба	7
Информация о двигателе	7
ПОДРОБНОЕ ОПИСАНИЕ	8
Vessel Walkthrough	8
Salon	8
Lower Helm Area	8
Galley	9
Master Stateroom	9
Master Head	9
Guest Cabin	10
Guest Head	10
VIP Cabin	10
Foredeck	10
Cockpit/Aft Deck	11
Flybridge	11
Engine Room	11
Electrical	12
Remarks	13
Exclusions	13
Disclaimer	13
Исключения	13
Отказ от ответственности	13

ФОТОГРАФИИ	15
Salon From Aft	15
Salon to Port From Aft	15
Salon Looking Aft	15
Salon to Stbd From Aft	15
Bar Starboard Side of Salon	15
Helm Detail	15
Bow and Stern Thruster Controls	16
Galley from Above	16
Galley to Fwd Port	16
Lower Helm	16
Galley Aft to Port	16
Washer Dryer	16
Storage-Pantry	17
Fridge Freezer	17
Master Stateroom Berth	17
Master Fwd to Port	17
Master Fwd to Stbd	17
Master Head	17
Master Shower	18
Bunk Bed Stateroom	18
VIP Fwd Stateroom 2	18
VIP Fwd Stateroom	18
Guest Shower and Washbasin	19
Guest Head and Shower	19
Foredeck Sunpad	19
Windlass Detail	19
Side Decks	19
Foredeck from Bridge	19

Flybridge Helm and Sunpad	20
Flybridge Wetbar	20
FB Steps	20
Hydraulic Platform	20
Aft Deck Gate	20
Aft Deck Seating	20
Lazarette Storage Area	21
Engine Room Aft to Stbd	21
Starboard Engine	21
Port Engine Filters	21
Port Engine Detail	21
Fire System	21
Generator	22
Main Electrical Panel	22
Port Profile	22
Stern Shot	22
Stbd Profile	22
Storage Covers	22
Storage Cover	23
New Teak decking installed June 2021	23
New Teak decking installed June 2021	23
New Teak decking installed June 2021	23
New Teak decking installed June 2021	23
New Teak decking installed June 2021	23
Layout	24
КОНТАКТЫ	25
Контактная информация	25
Телефоны	25
Время работы	25

Адрес

25

ХАРАКТЕРИСТИКИ

Основная информация

Тип судна: Моторная яхта

Подкатегория: Flybridge

Модельный год: 2006

Год постройки: 2006

Страна: United States

Открытая палуба мостика: Да

Размеры

Длина общая: 50' 0" (15.24m)

Ширина: 15' 1" (4.60m)

Мин. осадка: 3' 11" (1.19m)

Макс. осадка: 4' 1" (1.24m)

Скорость, вместимость и масса

Крейс. скорость: 25 Kts. (29 MPH)

Дальность на крейсерской скорости:
270

Макс. скорость: 30 Kts. (35 MPH)

Водоизмещение: 50600 Pounds

Чистый вес: 26 Pounds

Вместимость воды: 132 Gallons

Вместимость сточного бака: 50 Gallons

Объем топливного бака: 660 Gallons

Размещение

Всего кают: 3

Спальные места: 6

Всего ком. состава: 2

Корпус и палуба

Материал корпуса: Fiberglass

Материал палубы: Fiberglass

Комплектация корпуса: Deep Vee

Дизайнер корпуса: Don Shead

Дизайнер экстерьера: Don Shead

Информация о двигателе

Двигатели: 2

Производитель: Volvo

Модель: D-12B

Тип двигателя: Inboard

Тип топлива: Diesel

ПОДРОБНОЕ ОПИСАНИЕ

Vessel Walkthrough

Entering from the Aft Deck/Cockpit via sliding stainless steel trimmed doors is the open Salon with a large settee to starboard, a small settee to port, the yacht's Lower Helm to starboard and open lower Galley to port. The full beam en suite Master is aft of the Galley. The twin upper Lower Stateroom is opposite the Galley to starboard. The VIP is forward and has a full Head there shared with the upper Lower Guest Cabin. In 2018 ADT Yacht Interiors of Sarasota was commissioned to do a \$49,000 interior refresh to include carpet, soft goods, wall panels, new TV's, etc.

Salon

Entering via the stainless steel entry doors is the spacious open Salon. To port is a cabinet with two storage drawers and a DC Jensen AM/FM/CD player for exterior spaces. Next forward is a two person leather settee with storage below. Forward of that is a cherry cabinet housing a built in Samsung 32" LED TV and a Bose Home Theatre system for AM/FM/CD/DVD.

Opposite to starboard is a large C shaped leather settee with a cherry table that can be cocktail size or dining size via a swivel fold out leaf. There is also storage in the base of the table. One step up is a cherry cabinet housing the yacht's stem and glassware plus a stainless steel Raritan icemaker.

Also in the Salon is a wood sole with a carpet runner, 18 overhead mini halogen spots, Marine Air digital AC controls, mini blinds over the large port and starboard side windows and full drapes across the aft entry door and sidelights.

Lower Helm Area

The yacht's Lower Helm is to starboard and just forward of the raised dry bar area. A black oversized leather helm seat provides seating for one or two. Storage below is via an aft facing cabinet door. The Helm includes the following equipment:* Furuno Nav Net VX2 10" radar/plotter sounder* Simrad autopilot* Raymarine digital depth gauge* Raymarine digital speed gauge* Simrad VHF* Ritchie 4" magnetic compass* Stainless & wood helm wheel* Full VDO analog engine gauges* VDO rudder angle indicator* Trim tab controls* Lewmar bow & stern thruster controls * Engine start stop controls* Volvo electronic engine controls * Searchlight

controls* 12V outlet/cigarette lighter* Sea Fire engine shutdown override system* Bilge pump control panel* Electric fuel tank gauge* Electric water tank gauge* Cup holder

Galley

The Galley is six steps down and to port but still very open to the Salon as it is aft of and below the forward windshield. The Galley is L shaped and fully equipped with the following items:* Avonite countertop w/under counter trash receptacle * Eurokera 3 burner ceramic cook top* Round stainless sink w/cover* Black & Decker Spacemaker coffeemaker* Marine Air digital AC controls* Sharp Carousel microwave/grill/convection oven* Bosch range hood w/work light* Built in Marvel refrigerator behind cherry door (new 5/19)* Subzero fridge/freezer behind cherry door* Single lever faucet* (2) Cherry drawers* (13) Cherry cabinet doors * (3) Halogen mini spots* (6) Halogen mini spots under countertop* Planked teak wood sole* Splendide washer/dryer combo (new 5/17)* Six place crockery set* Six place cutlery setUnder the steps and accessed via the companionway to the Master is another very large hanging locker.

Master Stateroom

The Master Cabin is next aft from the Galley and under the forward part of the Salon. It features an athwartship queen size berth with two storage drawers at the foot of the berth. The padded headboard has a mirrored section on the bulkhead above plus two reading lights. To port is the entrance to the en suite Head and an AM/FM/CD player with hidden speakers. To starboard is a small vanity with a stool, two drawers and a mirror. Next forward are two cabinets and two drawers. Above is a cherry countertop and drapes over the three Sunseeker signature portholes, the center of which, opens. Furthest forward is a very large two mirrored door hanging locker with auto light and a cedar lining. On the forward bulkhead is a 20" TV built into the bulkhead. Also in this cabin are Marine Air digital AC controls, ten overhead halogen mini spots, and ample DC outlets.

Master Head

Just one step up and to port is the private Master Head. A white China pedestal sink is the centerpiece of the Head with two large mirrored medicine cabinet doors above. Between is an opening stainless steel porthole with "Oceanair" cherry mini blinds. The toilet is a Sealand VacuFlush model. The stall shower has a handheld or wall mountable fixture, a light, small seat, an exhaust fan and a semi circular dark tinted acrylic door. Also in this Head is a planked vinyl

sole, holding tank full indicator, GFCI outlet and an AC vent.

Guest Cabin

Just forward of the Master Cabin and opposite the Galley is the Guest Cabin with twin over/under berths running fore and aft. Each berth has a padded headboard and a reading light.

Above the upper berth is an opening stainless steel Bomar porthole. Aft in the cabin is a cherry cabinet with two drawers and a cabinet door and an Alpine AM/FM/DVD/CD stereo with remote. A 20" LCD TV is built into the inboard bulkhead easily viewed from either berth.

Forward is a mirrored hanging locker door with cedar lining and auto light within. Below are two additional storage drawers. Also in this cabin are stereo speakers and four halogen mini spots.

Guest Head

Next forward is the Guest Head shared by the Guest and VIP Cabins. It also serves as the Day Head. The sole is planked cherry vinyl. The pedestal sink has a single level faucet and mirror above. The toilet is a Sealand VacuFlush model. Above is a two door mirrored medicine cabinet with an opening Bomar stainless steel porthole and Oceanair cherry mini blinds below. The stall shower has a handheld or wall mountable fixture, a light, an exhaust fan and a tinted acrylic semi circular door. Also in this cabin is an AC vent, GFCI outlet and three halogen mini spots overhead.

VIP Cabin

All the way forward is the spacious VIP Cabin with a centerline pedestal berth, padded headboard, twin reading lights and two large drawers at the foot of the berth. Built in cabinetry serves as port and starboard nightstands. Padded ledges serve to retain the drapes that cover the single port and starboard Bomar stainless steel opening portholes. Above is an opening Bomar porthole for ventilation and escape. At the foot of the berth on the starboard side is a 20" LCD TV, and an AM/FM/CD player with remote. Adjacent is an access door to the Guest Head. To port is a mirrored hanging locker door with cedar lining and auto light. Also in this cabin is a digital Marine Air AC control, eight overhead halogen mini spots and concealed stereo speakers.

Foredeck

Fiberglass nonskid decks Stainless steel bow rails w/lifeline Delta plow type anchor w/200' of

galvanized chain24 Volt Lewmar windlass w/up & down foot switchesStainless steel stem head roller & anchor stopSelf draining chain locker w/fender storageInternational navigation lights(2) 24V Pantograph windshield wipers24V Remote control Jabsco spotlightCurved safety glass windshieldSunbrella windshield coverBow sun cushions with coverBow staff & pennantRound Bomar deck hatchDual trumpet hornsNew searchlight 3/18

Cockpit/Aft Deck

Engine Room access hatch on gas shocksMolded steps to Flybridge w/teak treadsFiberglass integral swim platform w/teak soleFoldaway stainless steel swim ladder under an opening hatchHot & cold showerDockside water connectionEnsign staff & socketIndirect Cockpit lighting(2) Dock line storage lockersStorage locker under Flybridge stepsStorage locker to starboardPrepped for passarelle but not fittedUpholstered seating w/cover for 4 - 5 people aft w/crew access belowUnderwater lights, new 2018(3) Molded steps to side decks on both port & starboard sidesFrameless windows in cabin side & forward windshield(2) Lewmar warping winches w/foot switchesJabsco washdown fittingPhone/TV inlet in CockpitStorage locker in swim platform soleStorage locker in transom, starboard sideAft Deck full coverHydraulic swim platform 1000 lb. (estimated) capacityBack up cameraThe teak deck on the fixed swim platform, aft deck area and steps is due for replacement. A deposit has been made on this \$26,000 job. A kit was ordered from Sunseeker and is awaiting delivery.

Flybridge

Fiberglass nonskid soleLow Profile fiberglass radar archLarge C shaped Flybridge seating w/removable cushions & storage below & Sunbrella coversAdjustable height fiberglass cocktail table w/Sunbrella coverBlue Sunbrella Bimini topAcrylic Venturi windscreen w/stainless steel frameWood & leather trimmed helm wheel Ritchie 4" magnetic compassTrim tab controlsAnchor windlass controlsSunbrella helm cover(2) Stereo speakersDouble helm seat w/storage below & cover(2) Removable sun pads adjacent to HelmIndirect LED lighting VDO rudder angle indicatorSearchlight control – searchlight and controls new 3/18AM/FM stereo controlSea Fire engine shutdown override controlsElectric fuel tank gaugeGlomex analog & digital TV antennaBar w/sink & drink cooler120V GFCI outlet Furuno open array radar antennaFuruno GPS antenna(2) Raymarine graphic speed/distance displayFuruno Nav Net VS2 plotter/radar/depthFull analog VDO gauges for enginesLewmar bow & stern thruster controls – controls new 9/18Main engine start/stop controlsHinged plexiglass door over Flybridge stepsVolvo single lever engine controlsSimrad VHFSimrad APFull storage cover6 Person Revere life raft (new 2017)

Engine Room

Fresh water spigot & hose in Engine RoomSound insulation throughout Engine RoomSea Fire FM 200 auto fire extinguishing systems(2) Automatic bilge pumps(1) Automatic flood pumpBilge

high water level alarm(2) 24 Volt extractor fansManual bilge pumpElectric water heaterDripless shaft seals w/(2) spare mounted seals on each shaft – stbd assembly new 3/8, 4 lip seals new 3/18Sea cocks & strainers on all underwater fittings(4) Step stainless steel ladder(2) Oil change pumpsMarine Gear 5095Hypro Marine hydraulic steeringMAN spin on secondary fuel filtersDC Engine Room lights4 Bladed propsHot water tank – new heater element 3/1824V Pressure water system24V Vacuum toilet systemNew exhaust on main engines Feb. 2020Hydraulic tender platformGalley AC unit new 3/18Master Stateroom AC unit new 3/18Salon AC unit 16K BTU new 12/18VIP Cabin AC unit 12K BTU new 5/19New AC system drain pump new 12/19Repaint generator sound shield after removal from boat 3/19Heat exchangers cleaned in place (roded out) and impeller replaced 6/19(6) Sea Blaze underwater lights new 3/18Stern thruster motor rebuilt 9/18(2) New engine starters 4/18 one old as spare

Electrical

- * Kohler 13 kW generator w/underwater silent exhaust & sound shield, 545 hours
- * 220 Volt 50 amp Dockside connection w/50' cable on cablemaster reel
- * Systems monitoring panel
- * Galvanic isolator
- * (6) Batteries for engine starting in 24V circuit
- * (4) Batteries for house system in 24V circuit
- * (2) Batteries for generator starting in 12V circuit
- * Battery parallel system
- * Battery cut off switches in Cockpit locker
- * Alternator split charging system
- * Newmar 80 amp 24 Volt Battery charger
- * Newmar 14 amp 12 Volt Battery charger
- * Electrical bonding system
- * (28) 12/24V protected circuits in Engine Room panel
- * Shore/generator rotary switch in Cockpit locker
- * Digital AC volt/amp/frequency meter at main panel
- * 12V Digital DC volt/amp/capacity meter at main panel

- * 24V Digital AC volt/amp/frequency meter at main panel
- * (10) 220V AC breaker protected circuits at main panel
- * (12) 110V AC breaker protected circuits at main panel
- * (30) 24V DC breaker protected circuits at main panel
- * (8) 12V DC breaker protected circuits at main panel
- * Holding tank system monitor w/3/4 & full indicators plus pump running & sea cock open indicators at main panel

Remarks

New Bimini top and new exterior teak decking to be completed in 2021. Owner has spent consistently to keep YOUNG GIRL looking young! Actual hull length 52' 6" plus hydraulic platform. Dead rise aft is 19 degrees. Hull has pockets to reduce draft and shaft angle.

Exclusions

While every effort was made to list all pertinent included equipment aboard YOUNG GIRL, there are some personal belongings aboard. Prospective purchasers should assume any item not specifically mentioned herein will not convey at closing.

Disclaimer

The Company offers the details of this vessel in good faith but cannot guarantee or warrant the accuracy of this information nor warrant the condition of the vessel. A buyer should instruct his agents, or his surveyors, to investigate such details as the buyer desires validated. This vessel is offered subject to prior sale, price change, or withdrawal without notice.

Исключения

При продаже яхты исключаются личные вещи владельца.

Отказ от ответственности

Компания предоставляет описание судна или яхты добросовестно, но не может гарантировать точность этой информации, а также не ручается за техническое состояние. Покупатель должен проинструктировать своих агентов или оценщиков исследовать представленную информацию более подробно, по собственному желанию.

Продажа судна или яхты, изменение цены или снятие с продажи будет происходить без предварительного уведомления.

ФОТОГРАФИИ

Salon From Aft



Salon to Port From Aft



Salon Looking Aft



Salon to Stbd From Aft



Bar Starboard Side of Salon



Helm Detail



Bow and Stern Thruster Controls



Galley from Above



Galley to Fwd Port



Lower Helm



Galley Aft to Port



Washer Dryer



Storage-Pantry



Fridge Freezer



Master Stateroom Berth



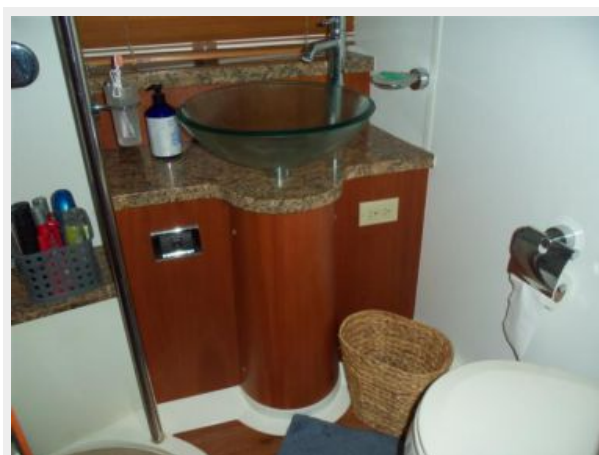
Master Fwd to Port



Master Fwd to Stbd



Master Head



Master Shower



Bunk Bed Stateroom



VIP Fwd Stateroom 2



VIP Fwd Stateroom



Guest Shower and Washbasin



Guest Head and Shower



Foredeck Sunpad



Windlass Detail



Side Decks



Foredeck from Bridge



Flybridge Helm and Sunpad



Flybridge Wetbar



FB Steps



Hydraulic Platform



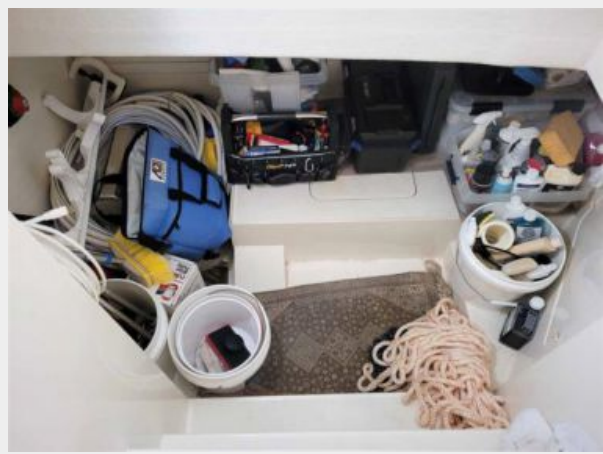
Aft Deck Gate



Aft Deck Seating



Lazarette Storage Area



Engine Room Aft to Stbd



Starboard Engine



Port Engine Filters



Port Engine Detail



Fire System



Generator



Main Electrical Panel



Port Profile



Stern Shot



Stbd Profile



Storage Covers



Storage Cover



New Teak decking installed June 2021



New Teak decking installed June 2021



New Teak decking installed June 2021



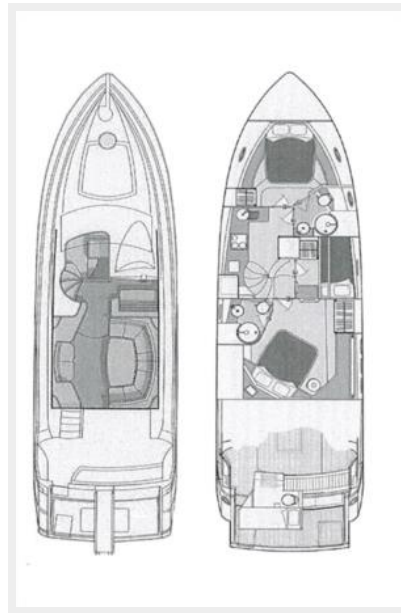
New Teak decking installed June 2021



New Teak decking installed June 2021



Layout



КОНТАКТЫ

Андрей Шестаков (Andrey Shestakov) – ведущий яхтенный брокер отдела продаж яхт и судов компании Shestakov Yacht Sales Inc. Официальный представитель Shestakov Yacht Sales Inc. для русскоговорящих клиентов в центральном офисе компании в Майами/Форт Лодердейл/Флорида/США.

Контактная информация

Email: andrey@shestakovyachtsales.com

Web: shestakovyachtsales.com

Телефоны

Краснодарский край: **+7(918)465-66-44**

США, Майами, Флорида: **+1(954)274-4435**

Время работы

Понедельник – Суббота: **9:00 - 21:00**
EDT

Воскресенье: **Закрето**

Адрес



Harbour Towne Marina, 850 NE 3rd St,
STE 213, Dania, FL 33004