

FD92-219 — HORIZON



Судостроитель: HORIZON

Год постройки: 2020

Модель: Моторная яхта

Цена: **ЦЕНА ЯХТЫ ПО ЗАПРОСУ**

Местонахождение: United States

Длина общая: 94' 5" (28.78m)

Ширина: 23' 3" (7.09m)

Мин. осадка: 6' 0" (1.83m)

Купить **FD92-219 — HORIZON** а также выбрать подходящую вам яхту из нашего каталога яхт вам поможет опытный яхтенный брокер Андрей Шестаков. На сегодняшний день компания **Shestakov Yacht Sales Inc.** имеет большое количество яхт в собственном списке продаж, а также тесно сотрудничает со всеми крупными яхтенными производителями по всему миру.

Для того чтобы купить яхту **FD92-219 — HORIZON** а также проконсультироваться по любому вопросу связанному с покупкой, продажей, чартером яхт позвоните по телефону **+7(918)465-66-44**.

ОГЛАВЛЕНИЕ

ОГЛАВЛЕНИЕ	2
ХАРАКТЕРИСТИКИ	5
Обзор	5
Основная информация	5
Размеры	5
Скорость, вместимость и масса	6
Размещение	6
Корпус и палуба	6
Информация о двигателе	6
ПОДРОБНОЕ ОПИСАНИЕ	7
Hull and Structure	7
Forward and Aft Decks	7
Beach Club	9
Skylounge and Boatdeck	9
Flybridge (Tri-Deck)	10
ENGINE & PROPULSION DETAILS	10
MECHANICAL SYSYSTEMS	11
Electrical systems	13
Interior decor and equipment	14
Salon	14
Galley	15
Master Stateroom	15
FWD VIP QUEEN STATEROOM	16
VIP Stateroom 2	16
TWIN GUEST STATEROOM	16
Crew quarters	16
Electronics	17
PILOTHOUSE/NAVIGATION	17

Исключения	18
Отказ от ответственности	18
ФОТОГРАФИИ	19
5-FD92-219-0111-R	19
4-FD92-219-0054-R	19
12-FD92-219-7670-R1	19
13-FD92-219-7730-R1	19
14-1-FD92-219-7634-R1	19
15-FD92-219-7589-R	19
17-FD92-219-7132-R	20
19-FD92-219-7051-R1	20
23-FD92-219-7541-R1	20
20-FD92-219-6858-R1	20
2-FD92-219-6528-R1	20
6-FD92-219-6621-R1	20
7-FD92-219-6705-0205	21
11-FD92-219-7249-R1	21
12-FD92-219-7280-R1	21
8-FD92-219-6426-R-0225-R1	21
14-FD92-219-7763-0205-R1	21
16-FD92-219-7808-0205-R1	21
18-1-FD92-219-7422-0205-R1	22
17-FD92-219-7953-0205-R1	22
8-FD92-219-0040-R	22
3-FD92-219-0832-R	22
КОНТАКТЫ	23
Контактная информация	23
Телефоны	23
Время работы	23

Адрес

23

ХАРАКТЕРИСТИКИ

Обзор

Tri-deck design w/ open flybridge

Enclosed skylounge w/ dayhead

On-deck Master stateroom + four guest cabins below, all ensuite

Three private crew quarters aft

Main salon + formal dining

Spacious galley w/ privacy screen & doors

Walnut for main wood w/ Wenge accents

Beach club w/ Hi-Lo swim platform & hydraulic door

Large bow seating area + sun pads

Boat deck w/ bar, seating & hot tub

Основная информация

Тип судна: Моторная яхта

Модельный год: 2021

Год постройки: 2020

Страна: United States

Открытая палуба мостика: Да

Размеры

Длина общая: 94' 5" (28.78m)

Длина по ватерлинии: 80' 10" (24.64m)

Ширина: 23' 3" (7.09m)

Мин. осадка: 6' 0" (1.83m)

Скорость, вместимость и масса

Водоизмещение: 305340 Pounds

Вместимость воды: 400 Gallons

Объем топливного бака: 4000 Gallons

Размещение

Всего кают: 4

Всего коек: 5

Спальные места: 8

Всего ком. состава: 5

Каюта капитана: Да

Каюты экипажа: 3

Койки экипажа: 5

Спальных мест экипажа: 5

Комм. состав экипажа: 2

Корпус и палуба

Материал корпуса: Fiberglass

Информация о двигателе

Двигатели: 2

Производитель: MTU

Тип двигателя: Inboard

Тип топлива: Diesel

ПОДРОБНОЕ ОПИСАНИЕ

Hull and Structure

ABS/DNV type approved fiber/resin & sandwich core material applied

White gel coat finish

One-piece hull cored lamination w/ deep skeg & longitudinal girders

Hull, deck & superstructure built w/ 3D VARTM infusion for improved strength & less weight

High density foam cored hull bottom

High density foam cored hull sides, decks & superstructure

Stringers with high density foam coring, bonded during layup for increased structural rigidity and strength

Interior structural components all properly bonded to hull

Strong collision bulkhead for extra safety

International anti-fouling bottom paint w/ anti-osmosis treatment

PropSpeed/PropGold metal paint for underwater appendages

Tunnels for reduced draft

HPPB High performance Piercing Bow

Upper deck with bump out design at port & side stbd

Forward and Aft Decks

Non-skid fwd deck & side decks

(2) High tensile 1/2" 300ft anchor chains

(2) Maxwell anchor chain counters

(2) S/S 100kg anchors

(2) S/S rollers & chain stopper

(2) Maxwell VWC3500 vertical hydraulic anchor winch w/ local foot switches and remote.

Maxwell VC2500 electric capstan at bow. (no reverse function)

(2) Maxwell VC2500 electric capstan at aft deck.

Freshwater/seawater anchor chain washdown

Heavy-duty S/S 1 3/4" handrail w/ 1-1/2" stanchions & steel cable

Frameless windows, tinted Low-E tempered glass for windshield

Frameless windows, tinted tempered laminated glass for side windows

Portuguese bridge w/ U-shaped seating, sunpads & storage per layout

Cabinet at fwd settee w/ Vitrifrigo fridge w/ freezer & icemaker

Sink & faucet, per layout

Sunshades at foredeck, per layout

Teak aft deck and teak steps

(2) FRP aft bulwark side boarding doors

Wind doors on each side of aft deck, to side walkway

Custom aft deck seating + hi/lo table, per layout

Custom mini bar w/ sink, fridge & icemaker to stbd

Fwd Marine stereo system w/ speakers

Aft deck electric folding TV cabinet w/ Samsung 43" QLED 4K TV with Marine stereo system w/ speakers

S/S sliding door for main salon, self-locking

Marquipt 7-step side boarding sea stairs

Pre-wire for boat name on stern, port & stbd sides

S/S Storm covers for all portlights (15)

(2) pop up secret lights (bow)

Upgraded and strengthened cleats for towing

Prewire "reverse function" cables for winch

Add sink and storage at fwd port sidewalk

Raised back sunpad on fwd deck

Canvas cover for helm station windshield

Beach Club

Hydraulic door w/ pantograph door

Sofa and bar area w/ Vitrifrigo fridge/freezer & barstools

32" Samsung QLED 4K TV with Marine stereo system w/ speakers

Hydraulic Hi/Li swim platform w/ 2000lb capacity

(4) sockets for removable handrails on swim platform

Built-in shower w/ hot/cold water above swim platform

Teak flooring

Skyounge and Boatdeck

Skyounge design w/ L-shaped sofa, day head, desk, (2) STIDD helm chairs & 49" Samsung QLED 4K TV with Hi/Lo TV Lift and soundbar

Blu-ray player + Apple TV

Electric Roman blinds

Custom designed helm w/ full set of engine gauges, monitoring system for important equipment, fuel & water gauges, Ritchie Supersport magnetic compass, surveillance camera system (PTZ cameras for aft deck & engine room), bilge pump panel & nav lights

(2) Hatches above helm

Non-skid boat deck

Removable S/S rails around boat deck

Oversize drains w/ strainer on each corner w/ internal overboard drains

Full bar w/ Vitrifrigo icemaker, fridge & 3 barstools

Hot tub w/ bar top & 3 barstools, shower and freshwater outlet underneath for deck wash

Sunshade for boat deck area, per layout

Hi/Lo 24" propane Aritex BBQ in FRP cabinet

Hydraulic steelhead davit SM2000, with added storage box under the crane beam

(4) Flood lights for mast & boat deck and (2) search lights

Marine stereo system w/ speakers

MTU wired remote plug in on boat deck

Extra day head

Flybridge (Tri-Deck)

Non-skid deck

Helm station w/ integrated panel w/ engine controls, engine start/stop, (2) Garmin 8612 screens, autopilot, repeaters for speed/wind/depth, VHF, search light control, windlass control, ABT thrusters & stabilizers, magnetic compass & horn

Radar arch w/ antennae bracket

Windshield w/ S/S frame & S/S rails

Black mesh in front of helm station windshields

Canvas cover for helm station windsheilds

Large L-shaped sofa w/ coffee table

Wet bar w/ sink, Vitrifrigo fridge & icemaker

Bench seating, port side w/ sunpad cushion

Fresh water outlet under FB helm hidden sink for deck wash

Viking Cannister life raft (purchase and install in the U.S.)

Marine stereo system w/ speakers

ENGINE & PROPULSION DETAILS

Twin MTU 10V2000 M96L 1600HP engines w/gearboxes

S/S shafts Aqualoy 22HS

High performance S-class 5 Blade propellers

Bronze struts w/ backing plates

Shaft & rudder packing glands w/ Tides Marine seals

ABT Zero Speed Stabilizer

ABT hydraulic bow and stern thrusters

Delta-T engine room ventilation system

S/S Rudder w/ Zinc plates

S/S emergency tiller in rudder cabin

Hypro Steering System

Underwater exhaust system for engines w/ bypass mufflers

Anti-noise treatment to exhaust system

Bennett trim tabs w/ indicators

Engine load distributed through flexible mountings on S/S engine bed bonded to FRP hull girder

ER clean design w/ lightweight honeycomb floor

S/S overhead grab rail on each side of engine

Engine room LED ceiling lights & LED lights under engines

Engine alarm system for low oil pressure & high-water temp

MECHANICAL SYSTEMS

Chilled water Marine Air air conditioning

Backup A/C circulation pump (ship loose)

Backup A/C sea water cooling pump (ship loose)

A/C Engine Room

Fuel tanks w/ sight & electrical gauges

Fuel filters/water separator supplied by MTU, each engine

Dual Racor 75/1000-MA fuel filters/water separator, each engine

Racor 500 MA fuel filters, one each generator

(2) Electric fuel transfer pumps

Reverso FPS210 fuel polishing system

Oil change pump system for engines, gears, & generators

400 Gallon FRP water tank

Dometic Seaxchange watermaker 1,800 GPD + SpotZero 2000 GPD

High-volume Headhunter AC freshwater pressure pump & back up DC pump

Fresh water charcoal filters in main supply pipe & galley

Fresh water hose for filling engine and generator expansion tank

ER strainer plumbing w/ cross-over line and freshwater flush (requires monitoring & maintenance by owner)

Marine grade lines for freshwater system

(2) 30 Gallon water heaters

Hot water circulation pump

Headhunter sanitary waste treatment system

Headhunter Bravo toilets

200 Gallon holding tank w/ macerator pump

100 Gallon sump tank

Sump pumps system for grey water

Electric level indicators for holding tank & sump tank

(5) Electric Rule bilge pumps

(2) Manual bilge pumps in ER & forward staterooms

High water level bilge alarm

Bilge exhaust ventilation fans

Seafire fixed fire extinguisher (FM200) for ER w/ remote control

Fire insulation in engine room, Fire resistant treatment for pipe

Auto shutdown system

Automatic fire damper system

(5) Portable fire extinguishers in recessed lockers

Integrated fire alarm in skylounge w/ heat & smoke detectors in each cabin

Air hose to bow

(4) Dehumidification system units + (4) TrueIAQ controls

Electrical systems

LED lighting system throughout interior & exterior

Maretron monitoring & control system

(2) Onan 40kW/60Hz generators w/ sound shields

100A shore power system w/ ISO Boost transformers 100A (2) & (2) 100A cablemasters

Vapor proof battery switch

(4) 255AH AGM start batteries for engines/gens w/ (2) battery chargers

(8) 210Ah Lifeline AGM batteries for boat's DC 24V service power w/ (2) combined inverter/chargers

(2) 210Ah Lifeline emergency batteries w/ independent battery charger

Main electric panel includes AC & DC circuit breakers

Emergency power package & lighting system

AC volt receptacles located throughout including engine room

GFI protection for all AC outlets in heads, galley & ER

Second two-outlet + GFCI in master bath and extra outlets in port guest cabin

Electrolysis bonding system

Cathodic protection w/ zinc anodes for shafts, struts, etc.

(8) Underwater lights and (2) Stern docking lights

Extra LED searchlight

Interior decor and equipment

Guest accommodations include on-deck master stateroom, fwd VIP cabin, port & stbd VIP cabins & twin guest room, all ensuite

Crew area has 3 staterooms, 2 heads, crew galley & access from aft deck & transom

Walnut for main wood w/ Wenge accents

Satin Oak main wood in crew

Fabrica carpet for all guest staterooms

Oak flooring in main salon, dining, skylounge & Walnut flooring for internal stairs only

Cambria quartz countertops & flooring for all guest heads

Stacked Miele washer/dryer in guest & crew companionway (total of 2)

Fridge in guest companionway

Full set of Horizon logo galley tableware for 10 including dish holders, pots/pans, dishes, plates, cutlery, glasses, etc.

AV system upgrade

Higher grade interior/exterior package (ex. Fabric and furniture)

Extra sheets sets for every bed, towels for every guest cabin

Salon

Dayhead in main salon aft

Leather L-shaped sofa, custom coffee table w/ ottomans per layout

(2) Loose chairs & side table to port

Custom area rug

Custom convertible dining table w/ hi-lo chairs, per layout

Free-standing custom storage cabinet

Electric single treatment curtains

Hinged doors to port and sliding doors stbd of main salon

55" QLED 4K TV

Home theater system

Blu-ray player + Apple TV

Galley

Cambria quartz countertops & floor

Full height SubZero fridge + full-height freezer w/ icemaker and S/S paneling

Miele Cooktop, oven & dishwasher

Bosch over-the-range microwave

GE Trash compactor

S/S double sink w/ InSinkErator disposal

U-Line Wine cooler

Full height pantry + storage per layout

Hi/Lo screen & privacy doors to enclose galley

Master Stateroom

King bed w/ storage drawers & nightstands

Port side love seat; vanity/desk to Stbd

Ensuite his & hers head w/ sink, toilet & storage on each side, middle shower w/ rainshower head

2 hanging lockers (port & stbd)

Electric roman shades

Opening porthole (4) units

Home theater system

49" Samsung QLED 4K TV with soundbar

Blu-ray player + Apple TV

FWD VIP QUEEN STATEROOM

Queen bed w/ storage drawers & nightstands

Large hanging locker on stbd side

Ensuite head w/ sink, shower w/ rainshower head & toilet

43" Samsung QLED 4K TV with Marine stereo system w/ speakers

VIP Stateroom 2

Mirrored staterooms w/ Queen bed, storage drawers & nightstand

Large hanging lockers

Ensuite head w/ sink, shower w/ rainshower head & toilet

43" Samsung QLED 4K TV with Marine stereo system w/ speakers

TWIN GUEST STATEROOM

Twin beds, one fixed + one sliding

Hanging locker

Ensuite head w/ sink, shower & toilet

32" Samsung QLED 4K TV with Marine stereo system w/ speakers

Crew quarters

Captain's cabin w hanging locker, 32" Samsung QLED 4K TV with Marine stereo system w/ speakers

& ensuite head

(2) Bunk crew rooms w/hanging locker and shared head

Crew galley w/ sink, Convection microwave & cooktop

Electronics

TV antenna on top of radar arch

SAT TV KVH TracVision UHD7 + KVH TracPhone V7-HTS Dummy Dome (SAT phone pre-wire only)

WAVE WIFI Wi-Fi Booster

Pepwave MAX BR1 4G-LTE Router

(5) Panasonic PBX Telephones with intercom feature Exterior connector for shore phone and cable TV

(2) Axis CCD cameras (aft deck & engine room)

Fusion Marine Stereo system speakers in salon, guest staterooms, main exterior areas, beach club & crew cabins

PILOTHOUSE/NAVIGATION

Full Garmin nav system includes:

(3) Garmin GPSMAP 8624 24" multifunction display

(2) Garmin GPS 19x NMEA 2000

Garmin GMR 1226 - 72" 12kW 72nm open array radar system

Garmin GMR Phantom 54 – 48" 50W 72nm solid-state open array radar system

MBB300C for inputting Maretron info to Garmin display

Garmin Grid 20 remote input device

(2) Garmin VHF 315 marine radio

Garmin AIS 800 class B AIS transceiver

Garmin Reactor 40 Autopilot control unit system

Garmin GMI 20 instruments display w/ wind transducer; Airmar UST850 Ultrasonic speed & temp transducer

Garmin GSD 25 + fishfinder w/ Airmar 1kW CHIRP transducer

Garmin GXM 54 XM Satellite weather antenna

Исключения

При продаже яхты исключаются личные вещи владельца.

Отказ от ответственности

Компания предоставляет описание судна или яхты добросовестно, но не может гарантировать точность этой информации, а также не ручается за техническое состояние. Покупатель должен проинструктировать своих агентов или оценщиков исследовать представленную информацию более подробно, по собственному желанию. Продажа судна или яхты, изменение цены или снятие с продажи будет происходить без предварительного уведомления.

ФОТОГРАФИИ

4-FD92-219-0054-R



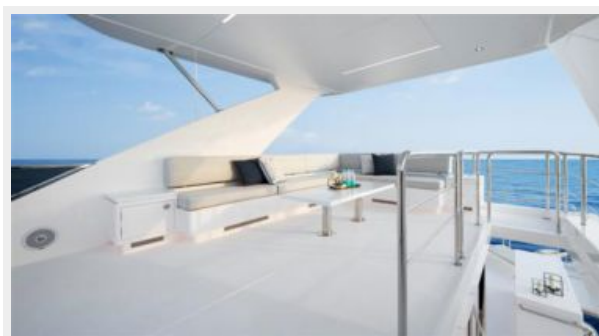
5-FD92-219-0111-R



12-FD92-219-7670-R1



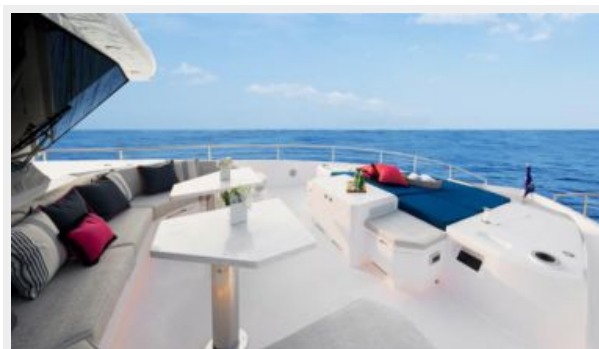
13-FD92-219-7730-R1



14-1-FD92-219-7634-R1



15-FD92-219-7589-R



17-FD92-219-7132-R



19-FD92-219-7051-R1



23-FD92-219-7541-R1



20-FD92-219-6858-R1



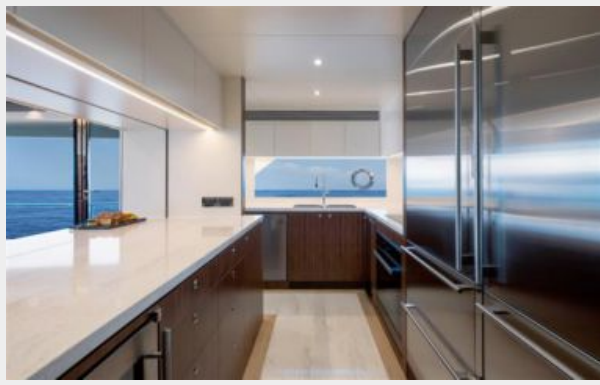
2-FD92-219-6528-R1



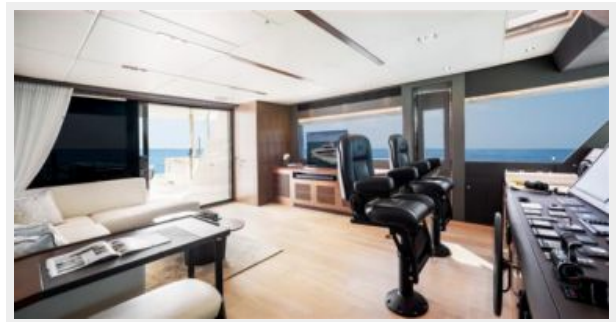
6-FD92-219-6621-R1



7-FD92-219-6705-0205



11-FD92-219-7249-R1



12-FD92-219-7280-R1



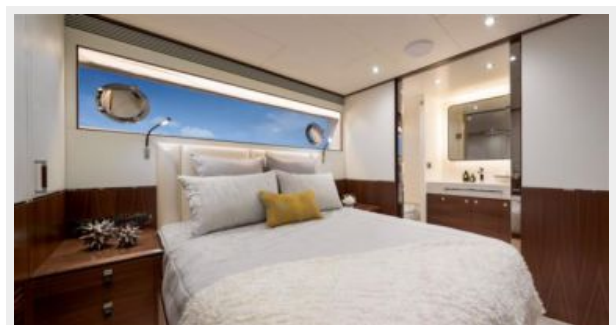
8-FD92-219-6426-R-0225-R1



14-FD92-219-7763-0205-R1



16-FD92-219-7808-0205-R1



17-FD92-219-7953-0205-R1



18-1-FD92-219-7422-0205-R1



8-FD92-219-0040-R



3-FD92-219-0832-R



КОНТАКТЫ

Андрей Шестаков (Andrey Shestakov) – ведущий яхтенный брокер отдела продаж яхт и судов компании Shestakov Yacht Sales Inc. Официальный представитель Shestakov Yacht Sales Inc. для русскоговорящих клиентов в центральном офисе компании в Майами/Форт Лодердейл/Флорида/США.

Контактная информация

Email: andrey@shestakovyachtsales.com

Web: shestakovyachtsales.com

Телефоны

Краснодарский край: **+7(918)465-66-44**

США, Майами, Флорида: **+1(954)274-4435**

Время работы

Понедельник – Суббота: **9:00 - 21:00**
EDT

Воскресенье: **Закрыто**

Адрес



Harbour Towne Marina, 850 NE 3rd St,
STE 213, Dania, FL 33004