

SEA FEVER — MORRIS YACHTS



Судостроитель: MORRIS YACHTS

Год постройки: 2011

Модель: Крейсерская яхта

Цена: ЦЕНА ЯХТЫ ПО ЗАПРОСУ

Местонахождение: United States

Длина общая: 42' 0" (12.80m)

Ширина: 11' 3" (3.43m)

Макс. осадка: 5' 9" (1.75m)

Купить **SEA FEVER — MORRIS YACHTS** а также выбрать подходящую вам яхту из нашего каталога яхт вам поможет опытный яхтенный брокер Андрей Шестаков. На сегодняшний день компания **Shestakov Yacht Sales Inc.** имеет большое количество яхт в собственном списке продаж, а также тесно сотрудничает со всеми крупными яхтенными производителями по всему миру.

Для того чтобы купить яхту **SEA FEVER — MORRIS YACHTS** а также проконсультироваться по любому вопросу связанному с покупкой, продажей, чартером яхт позвоните по телефону **+7(918)465-66-44**.

ОГЛАВЛЕНИЕ

ОГЛАВЛЕНИЕ	2
ХАРАКТЕРИСТИКИ	5
Обзор	5
Основная информация	5
Размеры	5
Скорость, вместимость и масса	5
Размещение	5
Корпус и палуба	6
Информация о двигателе	6
ПОДРОБНОЕ ОПИСАНИЕ	7
INTRODUCTION	7
HULL/DECK CONSTRUCTION	7
DECK	7
СОСКИП	8
INTERIOR	9
ELECTRONICS, COMMUNICATION, NAVIGATION	10
ELECTRICAL	10
MECHANICAL/SYSTEMS	11
SPARS AND RIGGING	12
ANCHORING AND MOORING	13
SAFETY EQUIPMENT	13
ADDITIONAL EQUIPMENT	13
EXCLUSIONS	14
Исключения	14
Отказ от ответственности	14
ФОТОГРАФИИ	15
Profile	15
Saloon	15

Port Settee	15
Port Side Lockers	15
Stbd. Settee	15
V-Berth	15
Looking Aft	16
Galley	16
Stove	16
Service Panel	16
Head Vanity	17
Broad Reach	17
Bow	17
Sailing	17
Weather Decks	18
Bow Locker	18
Furling Boom	18
Cockpit	18
Cockpit Table	18
Helm	18
Helm, from above	19
Sailing	19
Sailing	19
Sailing	19
Sailing	19
Transom	19
Sailing	20
Sailing	20
Profile	20
Morris Yachts Detail	20
Engine	21

КОНТАКТЫ	22
-----	-----
Контактная информация	22
-----	-----
Телефоны	22
-----	-----
Время работы	22
-----	-----
Адрес	22
-----	-----

ХАРАКТЕРИСТИКИ

Обзор

Handsome spirited daysailer, easily controlled from the helm with many desirable features incl. furling main and large, comfortable cockpit. Great condition – priced to sell.

Основная информация

Тип судна: Крейсерская яхта

Подкатегория: Дейсейлер

Модельный год: 2011

Год постройки: 2011

Страна: United States

Регистрационный номер: TMY42121I011

Номер регистрации в береговой
охране: 1231965

Размеры

Длина общая: 42' 0" (12.80m)

Длина по ватерлинии: 30' 0" (9.14m)

Ширина: 11' 3" (3.43m)

Макс. осадка: 5' 9" (1.75m)

Трапы: 59' 8" (18.19m)

Скорость, вместимость и масса

Водоизмещение: 16279 Pounds

Вместимость воды: 68 Gallons

Вместимость сточного бака: 20 Gallons

Объем топливного бака: 50 Gallons

Размещение

Всего кают: 1

Всего коек: 1

Спальные места: 2

Всего ком. состава: 1

Корпус и палуба

Материал корпуса: Composite

Материал палубы: Composite

Цвет корпуса: Stars and Stripes Blue

Дизайнер корпуса: Sparkman & Stephens

Информация о двигателе

Двигатели: 1

Производитель: Yanmar

Модель: 3JH48

Тип двигателя: Inboard

Тип топлива: Diesel

ПОДРОБНОЕ ОПИСАНИЕ

INTRODUCTION

SIGNIFICANT PRICE REDUCTION - SEA FEVER REPRESENTS THE BEST M42 VALUE ON THE MARKET.

SEA FEVER is a perfect example of the elegant simplicity that expanded the success of her little sister the M36, adding standing headroom and more amenities for coastal cruising for a couple while still preserving the ease of singlehanded daysailing. With a large, comfortable cockpit, simplified sail handling with all control lines led to two electric winches at the helm and a beautiful open interior with everything needed for cruising the coast, she is a perfect boat for singlehanded sailing, with or without family and friends.

While often thought of as a big daysailer because of the association with the M36, the M42 is also a great coastal cruising boat for a couple or small family. The owner enhanced SEA FEVER during the build process to extend her abilities for cruising by increasing her fuel and water capacity, upgrading the battery bank, upgrading the ground tackle and many other improvements for comfortable cruising. Currently stored inside in Portland, Maine, and easy to see and get to.

HULL/DECK CONSTRUCTION

- Infused composite hull with Vinylester resin throughout; balsa core
- Composite longitudinal stringers and transverse keel floors
- Fiberglass engine bed
- Marine plywood structural bulkheads
- High-density core replaces the standard core in areas of deck hardware and through hull fittings
- Hull is 'Stars & Stripes Blue' Awlgrip
- Gold leaf cove stripe with clear coat sealer
- Awlgrip 'Cream' boot stripe
- Interlux Pacifica plus 'Black' bottom paint

DECK

- 'Oyster White' deck gelcoat
- Manually consolidated composite deck with Polyester resin and vacuum-bagged core-cell foam core
- Quarter sawn teak decking on the cockpit sole
- Light tan non-skid
- Varnished teak toe rail and coamings cap
- SS chafe strips at boarding gates

- Custom cast SS bow, midship and stern chocks that integrate beautifully with the teak toe rail
- (3) Schaefer Herreshoff style SS cleats: (1) 12" at bow and (2) 10" at stern
- (2) Schaefer 8.5" SS removable cleats midship with canvas storage bag
- Bow and stern rails with stanchions and double lifelines
- (4) Small SS folding padeyes installed adjacent to the stanchion bases port and starboard/fore and aft for use with the preventer lines forward and aft to secure the boom at mooring
- (3) Low-profile SS foredeck and cabin top hatches
- (2) SS 4" cowl vents mounted on gel-coated dorade boxes with stainless steel dorade guards
- Anchor locker with pivoting anchor bracket and salt water washdown pump with flush fiberglass hatch
- Large forepeak with storage for fenders, lines, boarding ladder, spare anchor and telescoping boathook
- SS anchor locker cleat for securing anchor line
- Deckhouse portlights are toughened safety glass, frameless installation

COCKPIT

The cockpit of the M42 was carefully designed to offer comfortable, ergonomic seating and sail handling with large seats over six feet on either side separated by a beautiful teak table mounted on centerline on an angled step that provides perfect bracing when sailing upwind. Lines run underdeck to two electric winches on either side of the helm provide fingertip control of the sails and make sailing simple with family and friends or just out for a single-handed afternoon sail.

- Varnished teak steering wheel
- Removable teak helmsman foot blocks with wide-angled faces on cockpit sole just aft of the wheel
- Canvas pedestal and wheel cover
- Safety padeye at helm
- Custom folding oiled teak helm step aft of pedestal for additional visibility
- Sunbrella canvas dodger with folding SS bows and elkhide-covered aft and side grab rails
- (2) Removable canvas dodger wings with large clear window panels for added protection in cockpit
- Varnished teak cockpit table with leaves and storage cover
- Teak clad footrest below cockpit table
- Large sail lockers port and starboard under cockpit seats, with shelf with fiddle and bungee cord tie-downs in starboard sail locker
- Lazarette storage under helm seat
- (2) SS cup holders in cockpit winch pods, with drains
- SS custom Morris Yachts drink holder at pedestal guard rail
- Sunbrella 'Pacific Blue' exterior cushions with self-piping

- Cockpit drainage meets the minimum requirements of ORC Category 2 and CE Category B
- SS line hanger bars in cockpit sail locker
- Full cockpit sun awning provides shade and protection while at anchor

INTERIOR

The interior is built in the Herreshoff style with Antique White bulkheads and varnished cherry joinery. The cabin sides are satin-varnished cherry veneer. There is a cherry drop-leaf table permanently mounted in the main salon with integrated silverware drawers and bottle storage. The overhead in the owner's cabin is painted v-groove wooden battens with fabric-covered boards that extend and over the berth and under side decks. Abundant natural light and ventilation is provided by opening overhead hatches and dorades with flow-control slides in the cabin. Large fixed frameless portlights add to the light and view of the surrounding waters.

- Ocean-Air Skyscreens are fitted to each overhead hatch
- Cabin sole lift-outs for access to systems below
- Forward cabin centerline berth with storage below the berth. Matching bureaus, port and starboard with outboard lockers, divide the berth from the main cabin
- Custom innerspring mattress by Portland Mattress for forward berth
- Varnished cherry shelves outboard of berth, port and starboard
- Optional shelves with fiddles at the midway point of each of the main cabin upper lockers
- (4) Black Hella cabin fans in main salon and forward cabin
- (6) Wall-mounted SS cabin lights with integral switches in main salon and forward cabin
- SS spotlight above main salon table
- Sunbrella 'Royal Blue' interior cushions with antique 'Beige Rib' piping

COMPANIONWAY:

- (2) Teak companionway doors with removable screens and canvas storage bag
- Varnished cherry grab rail on port side of companionway mounted to the head bulkhead

GALLEY:

- Optional Corian color countertop in 'Glacier Ice'
- Mirror-polished SS sink with chrome single-lever mixer faucet
- 13ft pull-out sprayer at galley faucet for use as cockpit shower
- Custom countertop organizer
- Isotherm 1.87 cu ft top-loading 12VDC refrigerator with SS liner and removable shelves
- Force 10 two-burner propane stove with thermostat-controlled oven on a gimbal mount
- (2) Scandvik adjustable rod lights
- SS dome light with integral switch
- Custom dish locker outboard of stove
- Drawers and storage under counter
- Garbage bin

HEAD:

- Optional stone counter in 'Thassos White Marble' with polished SS sink and single-lever faucet
- Shelf with fiddle mounted in head sink locker
- Scandvik mixer valve with wall-mount shower head
- Molded fiberglass floor pan with integral shower sump and electric drain pump
- Corian toothbrush and cup holder
- High-grade glass mirror with frame mounted on forward bulkhead
- Halogen spotlight mounted on varnished cherry base located above head, with integral switch
- Tecma electric macerating marine toilet
- Trash bin under sink
- (2) Robe hooks

ELECTRONICS, COMMUNICATION, NAVIGATION

The navigation electronics were updated in 2018 with a new chart plotter/radar at the helm, new instruments over the companionway (easily readable from the wheel) and a new VHF with remote mic at the helm.

- Raymarine Axiom Pro HybridTouch color chart plotter/radar display (NEW 2018)
- Raymarine Ray 70 waterproof VHF Radio with additional RayMic cockpit-mounted remote microphone (New 2018)
- Raymarine AIS integrated into chart plotter display
- (3) Raymarine i70s color displays for speed, depth and wind mounted on the aft face of the seahood (New 2018)
- Kato Marine SS fixed-mast platform for Raymarine 4KW antenna
- Raymarine ST8002-X10 autopilot with X-10 linear drive unit
- Raymarine Smart Controller wireless handheld remote
- (1) Tri-lens mast-mounted radar reflector
- OGM LED combination tri-color anchor light
- Perko bi-color bow light with chrome plated brass housing
- Perko transom stern light with chrome plated brass housing
- Aquasignal combination steaming light and deck flood light
- Ritchie 5" pedestal mount compass with polished SS cover
- Alpine AM/FM Stereo with CD player and 6" speakers in the main cabin
- 6" Alpine waterproof cockpit speakers installed at port and starboard foot wells of cockpit
- iPod interface cable for stereo
- Satellite radio tuner box with antenna mounted on spreader, interfaced to stereo

ELECTRICAL

- (3) Northstar high-capacity AGM house batteries with 630 amp hour capacity (an upgrade from the standard house battery bank)
- Optima 1000M amp start battery with 800 cold cranking amps
- Battery isolator added to enable charging the engine starting battery and house bank with a single alternator
- (2) 12 VDC outlets
- Exterior 12 volt outlet in starboard line locker
- Mastervolt 50 amp smart charger
- 110V Shore power system with SS power inlet and 50ft 30 amp cord
- Electrical panel mounted to hinged board for easy access behind
- Zinc Saver galvanic isolator on AC system ground wire

MECHANICAL/SYSTEMS

- Yanmar 3JH4E x SD Saildrive unit, 3-cylinder, direct-injected, fresh water-cooled 39 HP marine diesel engine. Hours: 593 (Jan 2021)
- Flex-O-Fold 3-blade propeller
- Yanmar engine mount pan, fiberglass
- Speedseal raw water pump cover for easy, tool-free access to impeller
- Yanmar keyless engine panel
- Gauges for tachometer, coolant temperature, oil pressure and engine hours
- Ignition switch
- Preheat button
- Start/Stop buttons
- Audible alarms for cooling water high temperature, low lube oil pressure, Saildrive water sensor and tachometer
- Edson single-lever throttle with neutral safety switch located on the pedestal
- Engine box is fitted with Soundown vinyl/foam composite noise reduction insulation
- Redesigned fuel tank with 50 gal capacity
- Racor model #220 spin-on fuel/water separator
- Cruz-Pro calibrated fuel tank gauge
- Espar D4 Airtronic diesel cabin heater
- Saildrive line cutters

FRESH WATER SYSTEM:

- 68-gallon fresh water capacity
- Additional 18 gal fresh water tank added under V-berth
- SS deck fill
- Shurflo pressure water system pump
- Quick 6.5 gallon SS water heater plumbed to engine heat exchanger and 110VAC
- Whale water system filter
- Cruz-Pro multi-tank gauge system

WASTE SYSTEM:

- Tecma electric macerating marine toilet
- 20-gallon Polyethylene waste holding tank with gravity drain to electric seacock valve for overboard discharge
- Snake River external tank level monitor
- Electric through hull for over board discharge for easy operation offshore

BILGE SYSTEM:

- Jabsco diaphragm 12VDC bilge pump with removable strainer
- Whale Gusher 10 manual bilge pump located near helm in cockpit

STEERING AND RUDDER:

- Edson wire rope/chain steering system with 44" teak rim wheel
- Carbon fiber rudder and rudderpost
- Jefa self-aligning upper rudder bearing
- Tides Marine self-aligning lower rudder bearing with adjustable lip seal
- Emergency tiller

SPARS AND RIGGING

The sail plan on SEA FEVER was modified during construction to take advantage of the opportunities made possible by the short trunk cabin. The bigger, deck sweeping jib adds over 5% sail area compared to a standard jib and the luff of the main was lengthened to increase the main's sail area by almost 2%, resulting in more power and performance than a standard M42's plan. In addition, a permanently rigged Code Zero on a furler forward of the jib easily powers the boat up in light winds.

- Carbon fiber mast by Hall Spars
- Fractional rig with swept back spreaders
- Navtec SS rod rigging
- Self-tacking jib on athwartships curved track
- Leisurefurl in-boom mainsail furling system
- Harken MKIV Unit manual jib furling system
- Sailtec SS integral hydraulic backstay adjuster
- Forespar vang
- Running rigging is low-stretch New England Rope
- Boom bail for preventer
- Harken MKIV Unit manual G-0 furling system
- Mast customized for permanently rigged G-0 with reinforcement for tang and sheave

WINCHES:

- (2) Lewmar 50 CCEST electric self-tailing primary winches
- (2) Lewmar 46 CCST manual self-tailing secondary winches
- (2) Lewmar 10" aluminum Powergrip lock-in winch handles
- Lewmar 30CCST halyard winch on mast

SAILS:

- Sail inventory is by North Sails and includes the following:
- Soft Norlam full batten mainsail
- Soft Norlam furling jib with UV protective cover on leach
- G-0 furling gennaker with UV protective cover on leach

ANCHORING AND MOORING

- Delta 35lb anchor w/150' of 5/8" diameter Yale Braid with 100' of 5/16" HT chain
- Anchor deployment system with manually rotating arm and integral anchor roller in foredeck locker
- Lewmar V2 SS windlass with rope/chain gypsy
- Saltwater wash down system with SS spigot located in the anchor locker
- Secondary FX23 anchor with storage in forepeak includes 50ft of 5/16" HT chain and 150ft of rope
- Secondary anchor chocks on forepeak

DOCKLINES

- (3) 10" x 26" vinyl ribbed fenders with polar fleece covers
- SS line storage bar in the forepeak locker
- Aluminum boat hook

SAFETY EQUIPMENT

- (3) Kidde Mariner 110 portable dry chemical fire extinguishers
- Engine compartment "Fire Port"
- Life jackets

ADDITIONAL EQUIPMENT

- Removable two-piece SS midship folding ladder with PVS treads and custom SS low profile mounting brackets with storage in forepeak
- Engine spare parts kit
- Spare bulbs and fuses

EXCLUSIONS

The owner's personal effects are excluded from the sale.

Исключения

При продаже яхты исключаются личные вещи владельца.

Отказ от ответственности

Компания предоставляет описание судна или яхты добросовестно, но не может гарантировать точность этой информации, а также не ручается за техническое состояние. Покупатель должен проинструктировать своих агентов или оценщиков исследовать представленную информацию более подробно, по собственному желанию. Продажа судна или яхты, изменение цены или снятие с продажи будет происходить без предварительного уведомления.

ФОТОГРАФИИ

Profile



Saloon



Port Settee



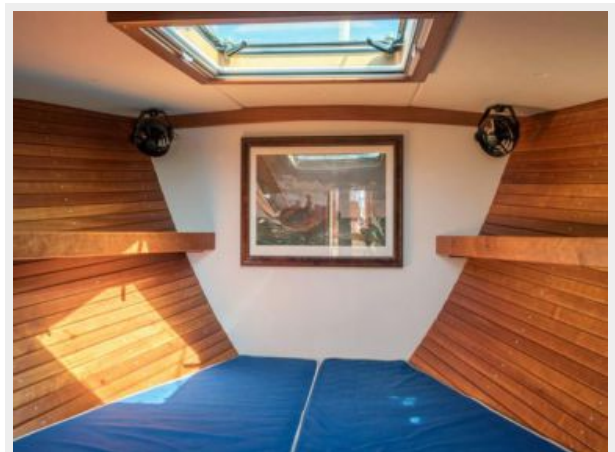
Port Side Lockers



Stbd. Settee



V-Berth



Looking Aft



Galley



Stove



Service Panel



Head Vanity



Broad Reach



Bow



Sailing



Bow Locker



Weather Decks



Furling Boom



Cockpit



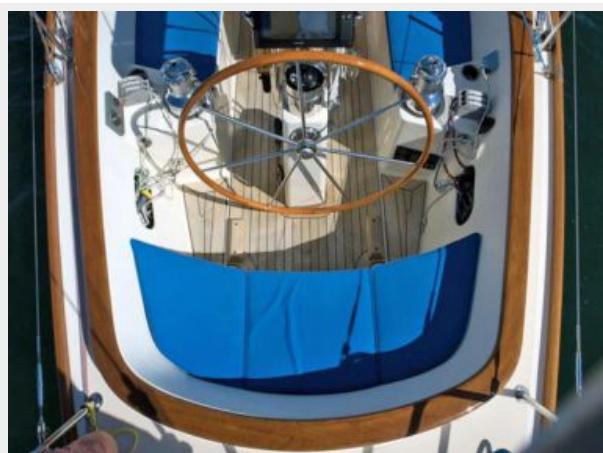
Cockpit Table



Helm



Helm, from above



Sailing



Sailing



Sailing



Sailing



Transom



Sailing



Sailing



Profile



Morris Yachts Detail



Engine



КОНТАКТЫ

Андрей Шестаков (Andrey Shestakov) – ведущий яхтенный брокер отдела продаж яхт и судов компании Shestakov Yacht Sales Inc. Официальный представитель Shestakov Yacht Sales Inc. для русскоговорящих клиентов в центральном офисе компании в Майами/Форт Лодердейл/Флорида/США.

Контактная информация

Email: andrey@shestakovyachtsales.com

Web: shestakovyachtsales.com

Телефоны

Краснодарский край: **+7(918)465-66-44**

США, Майами, Флорида: **+1(954)274-4435**

Время работы

Понедельник – Суббота: **9:00 - 21:00**
EDT

Воскресенье: **Закрето**

Адрес



Harbour Towne Marina, 850 NE 3rd St,
STE 213, Dania, FL 33004