

LUISA — HATTERAS



Builder: HATTERAS

Year Built: 2002

Model: Motor Yacht

Price: PRICE ON APPLICATION

Location: United States

LOA: 75' 0" (22.86m)

Beam: 18' 2" (5.54m)

Max Draft: 5' 6" (1.68m)

Cruise Speed: 22 Kts. (25 MPH)

Max Speed: 26 Kts. (30 MPH)

Our experienced yacht broker, Andrey Shestakov, will help you choose and buy a yacht that best suits your needs **Luisa — HATTERAS** from our catalogue. Presently, at Shestakov Yacht Sales Inc., we have a wide variety of yachts available on our sale's list. We also work in close contact with all the big yacht manufacturers from all over the world.

If you would like to buy a yacht **Luisa — HATTERAS** or would like help answering any questions concerning purchasing, selling or chartering a yacht, please call **+1(954)274-4435**

TABLE OF CONTENTS

TABLE OF CONTENTS	2
SPECIFICATIONS	5
Overview	5
Basic Information	5
Dimensions	5
Speed, Capacities and Weight	6
Accommodations	6
Hull and Deck Information	6
Engine Information	6
DETAILED INFORMATION	7
UPGRADES & FEATURES	7
Walkthrough	8
Salon	8
Galley	9
Aft Deck	10
Fore Deck	10
Pilothouse and Electronics	10
Master Stateroom	11
Fly Bridge	12
VIP STATEROOM AMIDSHIP	12
Forward VIP Stateroom	12
Twin Bed Guest Stateroom	13
Electrical	13
Engine Room	13
Disclaimer:	14
Exclusions	15
Disclaimer	15
PHOTOS	16

1A Profile	16
1b	16
1d0.aftADJRESOL	16
1d.Aft shot	16
1da2aft deck.	17
1d1.Aft Deck table	17
New soft goods 2016	17
2.0 salon5	17
2.1 Salon 4	17
3.galley	17
3agalley	18
3A.Galley night Shot	18
4.IMG_8885ADJRESOL	18
3bgalley	18
5.IMG_8899ADJRESOL	19
6.IMG_8902ADJRESOL	19
7.IMG_8903	19
Day Head and VIP Head	19
VIP Head	20
10.IMG_8919ADJRESOL	20
11.Best bunkADJRESOL	20
Bunk Head	20
stairs to VIP Stateroom	21
13a.Washer and dryer	21
Mid VIP En suite Head	21
15.vipmidIMG_8923ADJRESOL	21
15a.IMG_8926ADJRESOL	22
Vip Head w tub	22
full beam master head w 2 toilets and lg tub in center	22

17. Master 2	22
19. Master HeadADJUSTRESOL	23
large tub in center of master head	23
25.IMG_8941	23
21.DSC00225	23
26.MG_8967ADJRESOL	24
23.DSC00125	24
23.IMG_8940	24
24.IMG_8939	24
27 Davit	24
28 Boat Deck	24
1060 original engine hours!	25
entire boat is very good condition	25
30 Engine Room 2	25
30 Engine Room 3	25
Extremely well maintained	25
30 Engine Room 5	25
30 Gen Hours	26
30 Engine Room	26
40	26
CONTACTS	27
Contact details	27
Telephones	27
Office hours	27
Address	27

SPECIFICATIONS

Overview

Preliminary Listing Jan 10, 2021 Information and more photos coming shortly "Luisa"
Cleanest 75' Hatteras on the market, many custom factory upgrades, 4 stateroom, 5 head, Double VIP's, King bed in Master with the desirable his/hers head layout with a jacuzzi tub. Maple interior, Hardtop. She offers a custom Island Bar in the center of the Flybridge. In 2016 she was extensively refit with a custom galley arrangement that opens up to the salon. New electronics were added custom fitted in a new helm dash, new soft goods and flooring.

She offers 4 staterooms with a full beam master aft accessed from its private staircase. The Engine room is like brand new as well as the balance of the yacht.

The VIP is amidship and down a few steps from the lower foyer with an ensuite head, the forward VIP also has it ensuite head that also doubles as a day head for the entire yacht. The fourth stateroom is just aft of the forward VIP and offers a upper and lower berths with an ensuite head.

Basic Information

Category: Motor Yacht

Model Year: 2002

Year Built: 2002

Country: United States

Fly Bridge: Yes

Cockpit: Yes

Dimensions

LOA: 75' 0" (22.86m)

Beam: 18' 2" (5.54m)

Max Draft: 5' 6" (1.68m)

Speed, Capacities and Weight

Cruise Speed: 22 Kts. (25 MPH)

Max Speed: 26 Kts. (30 MPH)

Displacement: 110000 Pounds

Water Capacity: 345 Gallons

Holding Tank: 200 Gallons

Fuel Capacity: 1561 Gallons

Accommodations

Total Cabins: 4

Total Heads: 5

Hull and Deck Information

Hull Material: Fiberglass

Engine Information

Engines: 2

Manufacturer: Caterpillar

Model: 3412E

Engine Type: Inboard

Fuel Type: Diesel

DETAILED INFORMATION

UPGRADES & FEATURES

1060 Original engine hours

New Decor and Electronics 2015/2016

New carpet throughout

New flooring in galley and helm

New Appliances, Refrigerator, Oven and cooktop and dishwasher

New soft goods, Hunter Douglas blinds

Sofa reupholstered

New LED lighting through out

Helm dash and console redone to received new electronics

New Garmin plotters

New Radar

New Autopilot and digital compass

New Dish antennae, for HD

New TV's and HMDI cables for HD

Flybridge has a new large garmin and a smaller one.

New grill on flybridge and a custom deep freezer built in.

New exterior cushions through out with mesh screen.

June 2020 Complete bottom job with props dynamically balanced and new cutlass bearings.

Custom Flybridge Island Bar with seating around the bar and port and starboard L shaped seating.

Walkthrough

"Luisa" is the example of the perfect yacht, she is an iconic Hatteras 75 motor yacht that was derived from the very successful 74 Hatteras motoryacht. She has had the finest ownership's with very light use as displayed by her only **1060 original engine hours**. She has been captain maintained and constantly updated kept undercover during a good portion of her life and shows and is very clean.

Entering her from the port and starboard pilothouse doors you enter the helm area, then going aft into a full galley which was opened up to salon with home style appliances which includes a dishwasher, oven and stove top offering all the amenities of home.

Just to starboard of the galley is the country kitchen style dinette/settee which is used for casual lunch's and dining.

The Salon is just aft of the galley which offers a full beam salon with an recently added opening from the galley which creates a salon of a yacht much larger in size and very livable. In the salon is a large sofa and occasional chairs with viewing of the large TV to starboard.

From the salon and going aft are large aft bulkhead glass windows with a glass sliding door to create a very open feeling to the aft deck. Being a sportdeck she offer a large aft deck with a teak aft deck table and surrounding chairs to have a alfresco dinning experience.

From the salon through a private staircase going to the lower deck you enter the master foyer with double door entry into a private full beam master with a large king size bed and drawers port and starboard for ample clothes storage.

The master ensuite head is full beam and his and hers port and starboard separated by a jacuzzi tub/shower with elegant stone work

Most popular hard to find 75 Hatteras model - 4 stateroom double VIP, his and hers master, custom Island bar on Flybridge.

Salon

The full width salon features tasteful furnishings including a large sofa with ample storage to port with a designer coffee table. Two plush occasional chairs with are located across to starboard along with the entertainment center enclosed in maple cabinetry. Forward to port features maple dining table with six chairs. Moving further forward to port, galley area is separated and peninsula counter taht is opened up to the salon.

New LED lights have been installed throughout, and several new air conditioner units as well as

Hunter Douglas shades.

Across from the galley is a comfortable country kitchen seating area covered in premium grade leather.

Aft in the main salon a large sliding door leads to a covered aft deck which includes a custom gloss teak table and four chairs. There is an icemaker and flat screen television on the aft deck as well.

Going down a set of stairs from the sportdeck is the large swim platform and access to a large storage area under the aft deck.

Galley

The custom open pass through Galley is located on the main salon level to port and an abundance of maple cabinet storage, and a teak and maple sole.

- Franke double sink
- Franke single lever faucet w/sprayer
- Custom floor to ceiling pull out pantry for dry goods
- Expanded Galley counter top
- Kitchen-Aid refrig/freezer, external ice/water dispenser
- Whirlpool Gold dishwasher
- In-Sink-Erator disposal
- Whirlpool 4-burner stove top
- Kitchen-Aid self-cleaning 2-rack electric oven
- GE Profile SpaceMaker XL Microwave
- Water tank gauge
- Custom maple crown molding
- (2) overhead audio speakers
- Under cabinet recessed lighting
- Solid 3/8" teak, and maple floors
- Fixed window Duette blind/valance

Aft Deck

- Extra large covered aft deck (Sportdeck) with full seating
- Built in Wet bar cabinet
- Teak decking and aft rails
- Teak varnished table & 4 chairs
- Teak tread starboard side stairway to platform
- Stainless steel stern rails
- (2) large stand-up cleats
- (2) recessed cleats platform
- Fresh water wash down

Fore Deck

- Fiberglass non-skid
- Bow seating with cushions
- Glendinning shore power retrieval port + stbd.
- Maxwell 3500 windlass w/capstan, wildcat, and foot switches
- Large chain locker
- Port side fresh water outlet
- Side door shore water connection • Telephone, TV plugs port/stbd
- (4) port side diesel fills
- Water fill port side
- Waste pump out
- Overhead side deck courtesy lights
- Windshield privacy cover
- (3) windshield wipers
- Dual beam remote controlled searchlight
- Dual chrome air horn trumpets
- 8-step Marquipt Tide Ride ladder

Pilothouse and Electronics

The Pilothouse helm area is accessed by a port or starboard sliding deck doors. The Pilothouse has a large helm seat with storage below and pull out drawers, and can be separated from the main salon by closing a privacy door. The pilothouse dash has been redone also the forward window mullions.

The flybridge is accessed from the pilothouse by a wide stairway with a chrome hand railing. The stairway space has also been utilized to offer a custom pantry for additional galley needs.

- Caterpillar electronic diagnostic read-outs

- Garmin 7616 xsv monitors
- Sturdy Marine throttle, and shifters
- Ritchie Danforth 5" magnetic compass
- Garmin Radar
- Garmin Autopilot
- Garmin Digital compass
- ICOM VHF Transceiver IC-M506 Naiad Multisea II controls
- (2) ACR RCL-100 point pad search light
- MMI-110 Hatteras system monitor
- Depco DP-Primo-W pump made by American Bow Thruster
- American Bow Thruster control
- VDO voltage meters
- VDO rudder angle indicator
- Fixed Sea fire FM-200 for engine room, and generator room
- Sea 857 loud hailer/intercom
- (7) Bilge pump switches w/ indicator lights
- **Flybridge:**
- Garmin 741 GPS map
- HMDI cabling in areas

Master Stateroom

The Master Stateroom is accessed via carpeted stairway leading from the starboard side of the Salon, just aft of the custom galley/ office area. The Master Stateroom is a very private, full-beam, spacious area. This stateroom offers a centerline king-size bed, two walk-in cedar-lined closets, four oversized opening ports, two banks of six drawers both port, and starboard four additional drawers under the king bed, a TV cabinet with 4 hidden drawers, and a pneumatic shock assisted lift for additional storage under the king bed. The ensuite head is split His and Hers, and is separated by a Jacuzzi tub/shower with Each head area contains marble flooring, custom wall coverings, matching vanities in with rope lighting, and porcelain sinks, faucets, towel bars, and robe hooks, marble access panels to the Jacuzzi, and two Headhunter toilets. There are two optional opening ports in the head for cross through ventilation, and ambient light.

- King sized bed
- Samsung HD LCD TV w/ Sat receiver
- Duet drop shades
- Custom roman drop shades
- Custom maple crown molding
- Rope accent lighting
- (2) Overhead audio speakers
- (17) Recessed overhead lights
- "Hers" Walk-in cedar-lined closet with custom storage cubbies, built-in safe, 6' hanging space, and full-length mirror behind closet door

- "His" cedar-lined walk-in closet, 5' hanging space

Fly Bridge

"Luisa" has a completely custom flybridge arrangement with a unique Island bar for casual entertainment and the ease of walking around the complete flybridge.

Over sized fly bridge centered by a large walk around bar. There are three large helm seats and ample bar stools for plenty of high top entertaining. The bridge is covered by a factory hardtop which provides quiet cruising unlike many of these vessels which are fit with only stretched material. There are two large L-shaped couches to port and starboard covered in a festive island themed canvas. There is a deep freezer and large grill on the aft deck as well as an over sized dock box on the aft deck for storage of fishing or diving gear.

VIP STATEROOM AMIDSHIP

The VIP Stateroom is accessed from the stairwell leading from the pilothouse, and contains an ensuite head, centerline queen berth, good storage, and a cedar lined hanging locker. This stateroom is in front of a sound insulated bulkhead.

- Built-in bedside cabinets
- Panasonic TV/VCR 19" with satellite receiver
- Additional Hatteras added sound insulation
- Maple crown molding
- Duette shades
- Custom Roman drop shades
- Two cedar hanging lockers
- Four drawer built-in bed drawers
- Lift assisted storage under the queen berth Carpeted sole
- (9) recessed overhead lights w/ rheostat
- Full length mirror secured to companionway door
- Custom bed furnishings
- Head w/ granite counter, large shower/tub, teak/maple flooring, custom wall covering

Forward VIP Stateroom

Forward guest stateroom features island queen berth, plenty of cabinetry and hanging locker storage.

- Queen berth w/storage
- Custom spread & shams
- Indirect rope lighting

- 19" TV/VCR with satellite receiver
- Recessed overhead lights/dimmers
- 2 drawers each side
- Custom Roman shades
- Cedar lined hanging lockers(1)
- Cruisair SMX digital A/C controls
- En-suite Head with separate shower/day head
- Custom fixtures
- Recessed lights
- Hanging Cabinets (6 doors each side)
- Mirrored medicine cabinet
- Head Hunter head
- Upgraded custom wall coverings

Twin Bed Guest Stateroom

The third guest stateroom is just below the pilothouse to port, between the forward VIP and mid ship VIP guests with ensuite head and shower, and contains two large over/under beds. This stateroom will serve as a fourth guest stateroom or crew quarters.

- Pullman style upper bed
- Drawers below the lower bed

Electrical

The Hatteras electrical system, coupled with the multiple sources of power are enhanced by a dedicated generator and air conditioning room which is large, clean, dry, and easily accessible. This fully sound insulated area is located under a lift assisted hatch located at the day head level of the forward guest quarters area.

- (2)Onan 27.5 KW generators with approximately 1100 hours each located in the dedicated Generator room which contains some air conditioning units and lighting transformers
- Newmar 32-12-50 DC and AC converter
- (2) Charles ISO Boost transformers
- Multiple shore power hook-ups w/ Cablemaster
- Comprehensive 120/240 AC, 12/24 DC breaker panels

Engine Room

- Newmar 32-12-50 DC and AC converter

- (2) Charles ISO Boost transformers
- Caterpillar 3412E 1400 HP diesels 1060 original hrs.
- ZF 4 to 1 Transmissions
- Extra sound insulation
- Aft watertight access doors
- (4) 12 volt batteries
- Cat engine, and generator battery disconnect switches
- 4 Vapor proof battery selector switches
- DC Ship service #1+#2 distribution panel
- AC Ship service #3+#3B distribution panel
- Caterpillar engine gauges
- (1) Halon release sensors
- 94 lb. Halon cylinder w/dischage delay (Seafire - 200)
- Drip less shaft packing glands
- Dockside water pressure regulator
- 230 volt Headhunter Mach-5 fresh water pump (2)
- Jacuzzi pump for Master stateroom tub Cable/Antenna television switch
- Port, and stbd. manual/auto electric bilge pumps
- Oil change pump with dock length quick release connections
- Hydraulic engine control reservoirs w/ pressure gauge
- (2) Racor fuel filters for each engine
- (2) Lesson fuel/lift pumps
- Fuel valve management manifold
- (4) overhead DC lights
- (3) overhead AC fluorescent lights
- (2) stabilizer actuators
- Max Q FCI water maker w/auto flush
- Reverse Osmosis water filter Model TO9X26M with back-flush
- Compressed air outlet w/valve+ pressure gauge
- Steering cooling pump
- (2) 110 volt raw water A/C pumps to service 7 A/C units
- Engine start/stop switches
- Holding tank macerator pump w/vacuum switch
- Power steering pump off port engine
- Stabilizer pump off starboard engine
- Naiad 254 stabilizer control unit w/ reservoir, and temp. gauge (updated 2014)
- Stainless steel safety rails, and overhead storage racks

Disclaimer:

The Company offers the details of this vessel in good faith but cannot guarantee or warrant the accuracy of this information nor warrant the condition of the vessel. A buyer should instruct his agents, or his surveyors, to investigate such details as the buyer desires validated. This vessel is

offered subject to prior sale, price change, or withdrawal without notice.

Exclusions

Owner's personal belongings.

Disclaimer

The Company offers the details of this vessel or yacht in good faith but cannot guarantee or warrant the accuracy of this information nor warrant the condition of the vessel. A buyer should instruct his representatives, agents, or his surveyors, to investigate such details as the buyer desires validated. This vessel or yacht is offered subject to prior sale, price change, or withdrawal without notice.

PHOTOS

1A Profile



1b



1d0.aftADJRESOL

1d.Aft shot



1d1.Aft Deck table



1da2aft deck.



New soft goods 2016



2.0 salon5



2.1 Salon 4



3.galley



3A.Galley night Shot



3agalley



4.IMG_8885ADJRESOL

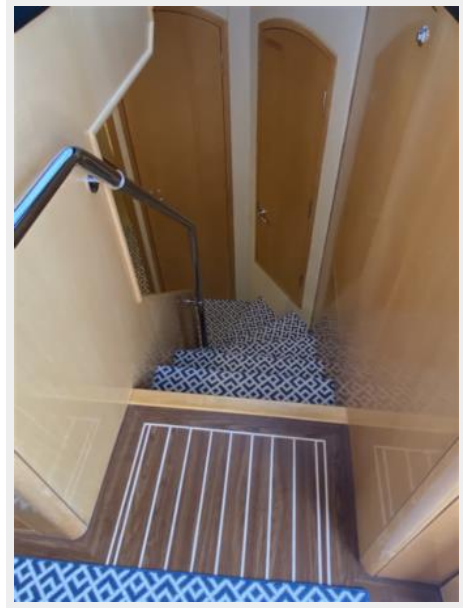
3bgalley



5.IMG_8899ADJRESOL



6.IMG_8902ADJRESOL



7.IMG_8903



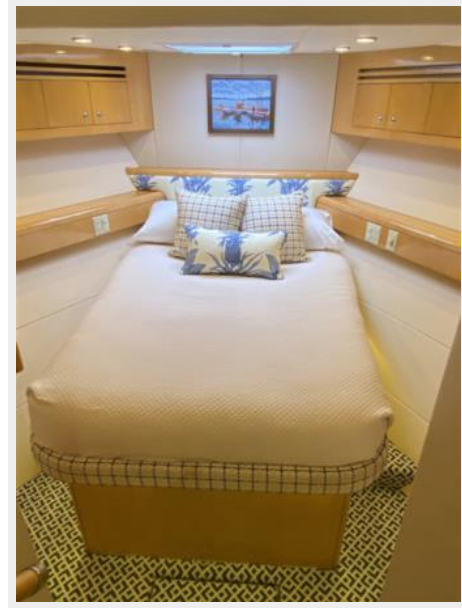
Day Head and VIP Head



VIP Head



10.IMG_8919ADJRESOL



11.Best bunkADJRESOL



Bunk Head



stairs to VIP Stateroom



13a.Washer and dryer



Mid VIP En suite Head



15.vipmidIMG_8923ADJRESOL



15a.IMG_8926ADJRESOL



Vip Head w tub



full beam master head w 2 toilets and lg tub
in center

17. Master 2



19. Master HeadADJUSTRESOL



large tub in center of master head



21.DSC00225



25.IMG_8941



23.DSC00125



26.MG_8967ADJRESOL



23.IMG_8940



24.IMG_8939



27 Davit



28 Boat Deck



entire boat is very good condition



1060 original engine hours!



30 Engine Room 2



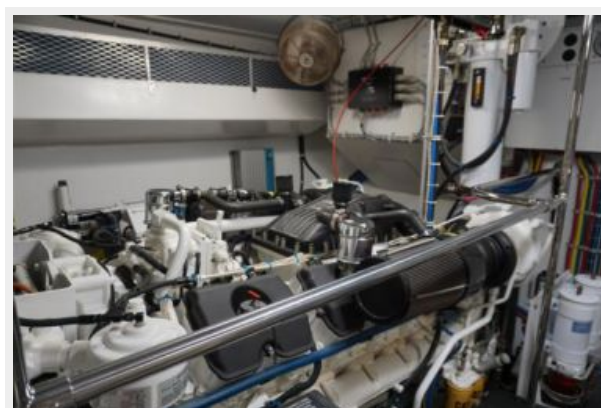
30 Engine Room 3



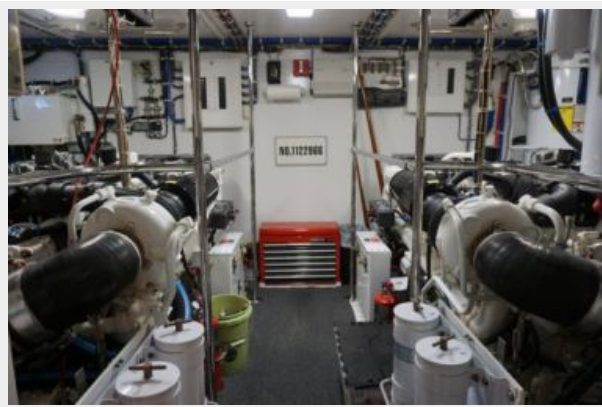
Extremely well maintained



30 Engine Room 5



30 Engine Room



30 Gen Hours



40



CONTACTS

Andrey Shestakov, leading yacht broker of the sales department of Shestakov Yacht Sales Inc. Shestakov Yacht Sales Inc., the official representative of the Miami/Fort Lauderdale FL headquarters.

Contact details

Email:
andrey@shestakovyachtsales.com

Web: shestakovyachtsales.com/en/

Telephones

USA: **+1(954)274-4435**

Office hours

Monday – Saturday: **9:00 - 21:00 EDT**

Sunday: **closed**

Address



Harbour Towne Marina, 850 NE 3rd St,
STE 213, Dania, FL 33004