

## MISS MICHELLE — OCEAN YACHTS



**Builder:** [Ocean Yachts](#)

**Year Built:** 1988

**Model:** Sport Yacht

**Price:** PRICE ON APPLICATION

**Location:** United States

**LOA:** 44' 0" (13.41m)

**Beam:** 15' 2" (4.62m)

**Min Draft:** 3' 6" (1.07m)

**Cruise Speed:** 23 Kts. (26 MPH)

**Max Speed:** 30 Kts. (35 MPH)

Our experienced yacht broker, Andrey Shestakov, will help you choose and buy a yacht that best suits your needs **Miss Michelle — Ocean Yachts** from our catalogue. Presently, at Shestakov Yacht Sales Inc., we have a wide variety of yachts available on our sale's list. We also work in close contact with all the big yacht manufacturers from all over the world.

If you would like to buy a yacht **Miss Michelle — Ocean Yachts** or would like help answering any questions concerning purchasing, selling or chartering a yacht, please call **+1(954)274-4435**

# TABLE OF CONTENTS

TABLE OF CONTENTS	2
SPECIFICATIONS	5
Overview	5
Basic Information	5
Dimensions	5
Speed, Capacities and Weight	5
Accommodations	6
Hull and Deck Information	6
Engine Information	6
DETAILED INFORMATION	7
Accommodations	7
Galley	7
Electronics	7
Engines and Mechanical	8
Decks and Exterior	8
Disclaimer	9
Exclusions	9
Disclaimer	9
PHOTOS	10
2	10
3	10
4	10
5	10
6	10
7	10
8	11
9	11
10	11

---

11	11
12	11
13	11
14	12
15	12
16	12
17	12
18	12
19	12
20	13
21	13
22	13
23	13
24	13
25	13
26	14
27	14
28	14
29	14
30	14
31	14
32	15
33	15
34	15
35	15
36	15
37	15
38	16
39	16

---

---

40	16
41	16
42	16
43	16
44	17
45	17
46	17
47	17
48	17
49	17
50	18
51	18
52	18
53	18
<b>CONTACTS</b>	<b>19</b>
Contact details	19
Telephones	19
Office hours	19
Address	19

---

# SPECIFICATIONS

---

## Overview

---

### Proven to Draw Fish!

**Miss Michelle** is a sharp example of the popular **Ocean 44SS!** Extremely well maintained by a very knowledgeable owner the boat shows very well and will not disappoint!

Powered by twin Detroit 671-TIB Diesels the boat features a Westerbeke 11 kW Generator, a Hard-Top with an excellent new Bridge Enclosure, and a beautifully clean interior.

**This is a tremendous amount of boat for your money! Large enough to travel comfortably, excellent for entertaining a small crowd, and a Proven Fish-Catching Machine!**

**Check the FULL SPECS for more details and call today to set up a time to see her!**

## Basic Information

---

**Category:** Sport Yacht

**Sub Category:** Convertible

**Model Year:** 1988

**Year Built:** 1988

**Country:** United States

## Dimensions

---

**LOA:** 44' 0" (13.41m)

**Beam:** 15' 2" (4.62m)

**Min Draft:** 3' 6" (1.07m)

**Clearance:** 13' 3" (4.04m)

## Speed, Capacities and Weight

---

**Cruise Speed:** 23 Kts. (26 MPH)

**Max Speed:** 30 Kts. (35 MPH)

**Displacement:** 36000 Pounds

**Water Capacity:** 100 Gallons

**Holding Tank:** 30 Gallons

**Fuel Capacity:** 480 Gallons

---

## Accommodations

---

**Total Cabins:** 2

---

## Hull and Deck Information

---

**Hull Material:** Fiberglass

**Deck Material:** Fiberglass

---

## Engine Information

---

**Engines:** 2

**Manufacturer:** Detroit Diesel / Johnson & Towers

**Model:** 671-TIB J & T

**Engine Type:** Inboard

**Fuel Type:** Diesel

---

# DETAILED INFORMATION

---

## Accommodations

---

The Ocean 44 Super Sport is a two-stateroom two-head layout with a large Salon. The Galley is down and to starboard, the Guest Stateroom is opposite the Galley to port. The Guest Stateroom features twin berths with a filler with a privacy head entrance. The Master Stateroom is forward with an Island Queen berth and a private head of it's own. Both heads have stall showers.

The Salon features a large L shaped sofa to port with a built-in sleeper and two barrel-back swivel chairs. The Salon is separated from the Galley by a nice Breakfast Bar with twin stools. Forward of the salon to port is a built-in wet bar and entertainment center.

The boat has two zones of Reverse Cycle Heat and AC and a built-in clothes washer and clothes dryer, individual units.

## Galley

---

- Kenmore Refrigerator/freezer
- Sharp Carousel Microwave oven
- Galley Maid 3-burner electric cooktop with oven
- Stainless Steel Sink w/ Pressure Water System
- Plenty of Storage
- Parquet Flooring
- Braun Trash Compactor
- Pur Water Filter on sink faucet
- ISE instant hot water system at the sink
- Kenmore garbage disposal
- Teak and Holly Sole
- Raritan Icer-ette ice maker in the salon wetbar

## Electronics

---

- Ritchie Powerdamp Plus compass
- Furuno GPS/WAAS Plotter
- Furuno 36 Mile Radar
- Raychart 610 EST Charting System
- Garmin 2010C Plotter with Sounder
- Raytheon V850 Color Sounder
- Robertson AP 200DL Autopilot
- Uniden ES VHF Radio
- Datamarine Offshore Sounder

- Datamarine Navigator Log/Speed Gauge
- ICom M120 VHF in Salon

---

## Engines and Mechanical

---

- Twin Detroit Diesel 671-TIB - Johnson and Towers - 450 HP Each - 1445 Hours
- Walker Airseps
- Dripless Shaft Seals
- Morse Engine Controls
- Glendenning Engine Synchronizer
- Westerbeke 11.0 kW Generator - 3300 Hours
- U-Lube 12 VDC Oil Change System
- Racor Fuel Water Separators w Vacuum Gauges
- Raw Water Strainers
- Two (2) 8D Batteries
- Single 50A/220VAC Shore Connection - 50' Cord
- Glendenning Cable Master Cord Retrieve
- Xantrex Trucharge Charger
- Fireboy Fire Suppression System

---

## Decks and Exterior

---

- Large Cockpit with Teak Sole and Caps
- Transom Door
- Lazarette Baitwell and Storage
- Cockpit Bait Freezer
- Built-in Tackle Storage
- Cockpit Steering Station
- Removable Cockpit Carpeting (Matches Bridge)
- Teak and Stainless Bridge Ladder
- Spacious Flybridge with Hardtop and Excellent Four-Sided Enclosure
- Twin Pompanette Pedestal Helm Chairs
- Forward Bridge Seating
- Starboard Bridge Seating
- Removable Bridge Carpeting (Matches Cockpit)
- Ideal Anchor Windlass
- Fortress Anchor
- Teak and Stainless Bow Pulpit
- Rupp Outriggers
- Seven Rod Holders - Cockpit
- Eight Rod Holders - Bridge
- Rod Storage in Salon and Cockpit



- Cockpit Tackle Center
- Fiberglass Swim Platform

---

## Disclaimer

---

The Company offers the details of this vessel in good faith but cannot guarantee or warrant the accuracy of this information nor warrant the condition of the vessel. A buyer should instruct his agents, or his surveyors, to investigate such details as the buyer desires validated. This vessel is offered subject to prior sale, price change, or withdrawal without notice.

---

## Exclusions

---

Owner's personal belongings.

---

## Disclaimer

---

The Company offers the details of this vessel or yacht in good faith but cannot guarantee or warrant the accuracy of this information nor warrant the condition of the vessel. A buyer should instruct his representatives, agents, or his surveyors, to investigate such details as the buyer desires validated. This vessel or yacht is offered subject to prior sale, price change, or withdrawal without notice.

# PHOTOS

2



3



4



5



6



7



8



9



10



11



12



13



14



15



16



17



18



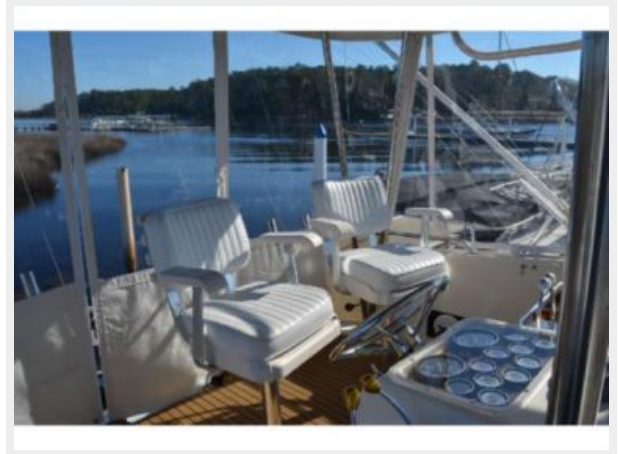
19



20



21



22



23



24



25



26



27



28



29



30



31



32



33



34



35



36



37



38



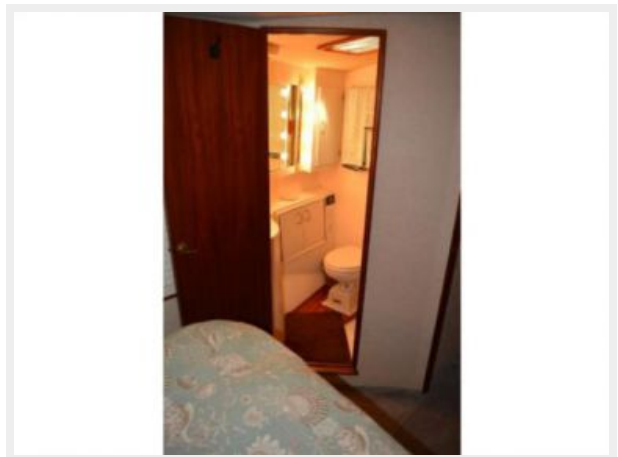
39



40



41



42



43





44



45



46



47



48



49



50



51



52



53



# CONTACTS

---

Andrey Shestakov, leading yacht broker of the sales department of Shestakov Yacht Sales Inc. Shestakov Yacht Sales Inc., the official representative of the Miami/Fort Lauderdale FL headquarters.

## Contact details

---

Email: [andrey@shestakovyachtsales.com](mailto:andrey@shestakovyachtsales.com)

Web: [shestakovyachtsales.com/en/](http://shestakovyachtsales.com/en/)

## Telephones

---

USA: +1(954)274-4435

## Office hours

---

Monday – Saturday: **9:00 - 21:00** EDT

Sunday: **closed**

## Address

---



Harbour Towne Marina, 850 NE 3rd St,  
STE 213, Dania, FL 33004