

MISS MARGO — HATTERAS



Builder: HATTERAS

Year Built: 1973

Model: Motor Yacht

Price: PRICE ON APPLICATION

Location: United States

LOA: 53' 0" (16.15m)

Beam: 15' 10" (4.83m)

Max Draft: 4' 0" (1.22m)

Cruise Speed: 9 Kts. (10 MPH)

Max Speed: 13 Kts. (15 MPH)

Our experienced yacht broker, Andrey Shestakov, will help you choose and buy a yacht that best suits your needs **Miss Margo — HATTERAS** from our catalogue. Presently, at Shestakov Yacht Sales Inc., we have a wide variety of yachts available on our sale's list. We also work in close contact with all the big yacht manufacturers from all over the world.

If you would like to buy a yacht **Miss Margo — HATTERAS** or would like help answering any questions concerning purchasing, selling or chartering a yacht, please call **+1(954)274-4435**

TABLE OF CONTENTS

TABLE OF CONTENTS	2
SPECIFICATIONS	6
Overview	6
Basic Information	6
Dimensions	6
Speed, Capacities and Weight	6
Accommodations	7
Hull and Deck Information	7
Engine Information	7
DETAILED INFORMATION	8
MAIN DESCRIPTION	8
Detroit Diesel	8
Electronics	9
Gallery Equipment	10
DISCLAIMER	10
Exclusions	10
Disclaimer	10
PHOTOS	11
1. Port	11
2. Starboard	11
3. Walkway Bow to Stern	11
4. Transome	11
5. Transome Boarding Lader	12
6. Sun Deck	12
8. Sun Deck Port Side	12
7. Sun Deck Starboard Side	12
9. Salon	12
10. Salon Looking Forward	12

11. Salon Starboard Side	13
12. Main Helm	13
14. Stairs to Lower Level	13
13. Main Helm Profile	13
15. Master Stateroom	14
16. Master TV & Storage	14
17. Master Stern Facing	14
18. Master Book Shelves	14
19. Master Head	14
20. Master Head Mirror & Vanity	14
21. 2nd Stateroom (2)	15
22. Guest Head	15
23. Forward Stateroom Storage	15
23. Guest Head Vanity	15
25. Forward Head	16
24. Forward Stateroom	16
26. Galley	16
27. Dinette	16
28. Galley Forward	16
29. Galley Counter Top	16
30. Fly Bridge	17
31. Bridge Helm	17
32. Fly Bridge Stairs	17
33. Fly Bridge Helm Seats	17
34. Fly Bridge Hatch	17
35. Tender	17
36. Bow Area	18
37. Bow Storage	18
38. Pulpit	18

39. Windlass	18
40. Starboard Main	18
41. Starboard Main Engine Room	18
42. Port Main Room	19
43. Port Main	19
44. Water Heater	19
45. Air Conditioners	19
47. Garmin GPS	19
46. Simrad Auto-Pilot	19
49. Simrad Radar	20
48. Uniden VHF	20
50. Xantrex System Controls	20
51. Pioneer Stereo Controls	20
52. Barometer	20
53. Helm Intercom	20
54. Bosch Dishwasher (1)	21
55. Mocrowave	21
57. Fridge-Freezer	21
56. Stove Top	21
58. Galley Intercom	21
59. Washer & Dryer	21
60. Sun Deck Teak Table	22
60. Sun Deck Bench Seats	22
62 Sun Deck Wine Fridge + Mini Fridge	22
61. Sun Deck System Controls	22
64. Davit Controls	22
63. Davit Winch	22
65. Tender Mercury 25 HP	23
66. Air Horn	23

68. Windlass Foot Controls	23
67. Radar Dome	23
69. Search Light	24
70. Shore Power	24
71. Radar Arch + Bimini Top Frame	24
72. Simply the best...	24
CONTACTS	25
Contact details	25
Telephones	25
Office hours	25
Address	25

SPECIFICATIONS

Overview

A classic 53 Hatteras Motor Yacht fully equipped and ready for a new adventure. This particular vessel has spent most of its time in fresh water and the current owner has done a nice job maintaining this beauty. With a three stateroom and a three head design there is plenty of room for you and your guest to relax and enjoy your days on the water. You will enjoy hours of entertaining in the 53's spacious salon that nicely joins up with the sun deck out back. Miss Margo has all the comfort and amenities of a single family home with one exception...it FLOATS and goes where ever you want to go!! Multi-level accommodations accessible from the salon/pilot house a spacious main salon with lower helm all the way forward, and an enclosed aft deck salon. Several steps down and forward from the lower helm finds the galley and dinette. Further forward there is a head/shower compartment to port a crew Vberth w/bunk beds is in the bow. Moving aft from the galley/dinette in the companionway finds a stack laundry and pantry followed by port & starboard engine compartments. Further aft is a second guest head to starboard and the VIP guest stateroom. The Master stateroom with head/shower is all the way aft.

Basic Information

Category: Motor Yacht

Model Year: 1973

Year Built: 1973

Country: United States

Dimensions

LOA: 53' 0" (16.15m)

Beam: 15' 10" (4.83m)

Max Draft: 4' 0" (1.22m)

Clearance: 18' 6" (5.64m)

Speed, Capacities and Weight

Cruise Speed: 9 Kts. (10 MPH)

Max Speed: 13 Kts. (15 MPH)

Water Capacity: 245 Gallons

Holding Tank: 125 Gallons

Fuel Capacity: 550 Gallons

Accommodations

Total Cabins: 5

Total Berths: 3

Total Heads: 3

Hull and Deck Information

Hull Material: Fiberglass

Engine Information

Engines: 2

Manufacturer: GM

Model: Detroit Diesel

Engine Type: Inboard

Fuel Type: Diesel

DETAILED INFORMATION

MAIN DESCRIPTION

A classic 53 Hatteras Motor Yacht fully equipped and ready for a new adventure. This particular vessel has spent most of its time in fresh water and the current owner has done a nice job maintaining this beauty. With a three stateroom and a three head design there is plenty of room for you and your guest to relax and enjoy your days on the water. You will enjoy hours of entertaining in the 53's spacious salon that nicely joins up with the sun deck out back. Miss Margo has all the comfort and amenities of a single family home with one exception...it FLOATS and goes where ever you want to go!! Multi-level accommodations accessible from the salon/pilot house a spacious main salon with lower helm all the way forward, and an enclosed aft deck salon. Several steps down and forward from the lower helm finds the galley and dinette. Further forward there is a head/shower compartment to port a crew Vberth w/bunk beds is in the bow. Moving aft from the galley/dinette in the companionway finds a stack laundry and pantry followed by port & starboard engine compartments. Further aft is a second guest head to starboard and the VIP guest stateroom. The Master stateroom with head/shower is all the way aft.

Detroit Diesel

Engines and transmission secured with cushioned adjustable mounts bolted to heavy duty metal frames secured to the longitudinal stringers, midships below the salon. Engine compartment access via 4 large hinged doors located in the companionway between the staterooms and galley. Miss Margo is equipped with 2 fiberglass encapsulated fuel tanks secured below the cabin sole amid-ships.

- Twin GM Detroit 8V92 advertised 275 HP - naturally aspirated inboard
- Allison model MH-20 marine reduction gear direct drive inboard transmissions
- Kohler model 15EOZD - 120/240 volt - 50 Amp - 15 KW generator
- Glendenning engine synchronizer
- 32 volt power blowers w/flex ducts hull side ambient air vents
- 32V & 120V compartment lighting -
- Oil XchangeR DC powered oil exchange system
- Small air compressor
- Marinized wet exhaust system with;
- Steel risers
- Steel and FRP ducting
- Reinforced rubber exhaust hoses w/double stainless steel clamps
- FRP silencers - transom exhaust discharge ports at the water line, fitted w/extendere and back-flow preventers
- 32 volt DC system - DC power for the engines, genset and some house systems supplied by 90 amp engine alternators - (8) Specialty 8V195, 980 CCA, and (2) series 27 DP/650 CCA wet cell lead acid batteries.

- DC system also equipped with system and engine volt meters
- Phase Three 32V/ 25W
- Xantrex 12V True Charge 40amp battery chargers
- 4 master battery disconnect switches
- Several Newmar 32-12 (DC-DC) converters

HVAC Systems

- Cruisair Systems marine HVAC systems equipped with;
- (5) 72,000 total BTU capacity reverse cycle compressors
- (4) remote condenser units
- HVAC system also equipped SMX digital and rheostat type controllers
- (2) 120/240V raw water pumps

Electronics

Electronics, NAV equipment

- President P-30H hailer w/fog and alarm signaling and remote horn
- Phone intercom unit
- Smart Choice CRT monitor w/engine room cameras
- JVC KD-640AM/FM stereo w/ weather tight case and CD player
- Simrad RA41C monochrome 36nm radar w/closed array
- Dual FloScan fuel flow monitors
- Simrad AP-25 Auto-pilot system w/monochrome display
- Raytheon digital depth sounder
- Garmin GPS/Map 162 monochrome chart plotter
- Smart Choice CRT monitor w/engine room cameras
- Standard Horizon Submersible hand held VHF radio
- 9" and 3" magnetic
- Compasses w/sun shields
- Intercom phone
- Pioneer DEH - X3910B AM/FM stereo w/ CD Player

Instruments/controls

- Stainless spoke steering wheels
- Analog engine and drive oil pressure, temperature, volt meters
- Rudder angle indicators - dual lever
- Hynautic mechanical throttle/shift
- Controls w/start-in-gear protection
- Engine start/stop switches and mechanical fuel shut off
- Levers - hull trim tab
- Bow thruster
- Glendenning engine

- Synchronizer and autopilot controls
- Fuel flow monitors

Gallery Equipment

Galley Granite countertops Double well stainless steel sink w/high end fixtures 5 burner Jenn-Aire radiant cook top S/S GE Profile microwave/convection oven w/light and fan Double door S/S Whirlpool refrigerator w/freezer & ice maker S/S Bosch dish washer GE stacked laundry Dining: Booth style dinette off the galley to Starboard

DISCLAIMER

The Company offers the details of this vessel in good faith but cannot guarantee or warrant the accuracy of this information nor warrant the condition of the vessel. A buyer should instruct his agents, or his surveyors, to investigate such details as the buyer desires validated. This vessel is offered subject to prior sale, price change, or withdrawal without notice.

Exclusions

Owner's personal belongings.

Disclaimer

The Company offers the details of this vessel or yacht in good faith but cannot guarantee or warrant the accuracy of this information nor warrant the condition of the vessel. A buyer should instruct his representatives, agents, or his surveyors, to investigate such details as the buyer desires validated. This vessel or yacht is offered subject to prior sale, price change, or withdrawal without notice.

PHOTOS

1. Port



2. Starboard



3. Walkway Bow to Stern



4. Transome



5. Transome Boarding Lader



6. Sun Deck



7. Sun Deck Starboard Side



8. Sun Deck Port Side



9. Salon



10. Salon Looking Forward



11. Salon Starboard Side



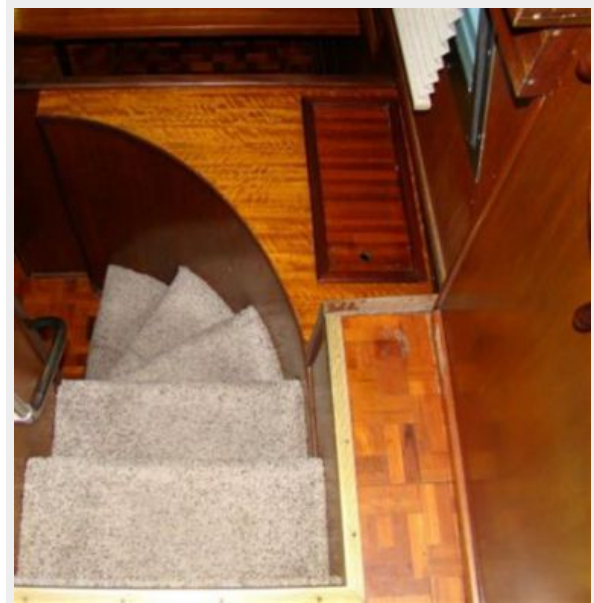
12. Main Helm



13. Main Helm Profile



14. Stairs to Lower Level



15. Master Stateroom



16. Master TV & Storage



17. Master Stern Facing



18. Master Book Shelves



19. Master Head



20. Master Head Mirror & Vanity



21. 2nd Stateroom (2)



22. Guest Head



23. Forward Stateroom Storage



23. Guest Head Vanity



24. Forward Stateroom



25. Forward Head



26. Galley



27. Dinette



28. Galley Forward



29. Galley Counter Top



30. Fly Bridge



31. Bridge Helm



32. Fly Bridge Stairs



33. Fly Bridge Helm Seats



34. Fly Bridge Hatch



35. Tender



36. Bow Area



37. Bow Storage



38. Pulpit



39. Windlass



40. Starboard Main



41. Starboard Main Engine Room



42. Port Main Room



43. Port Main



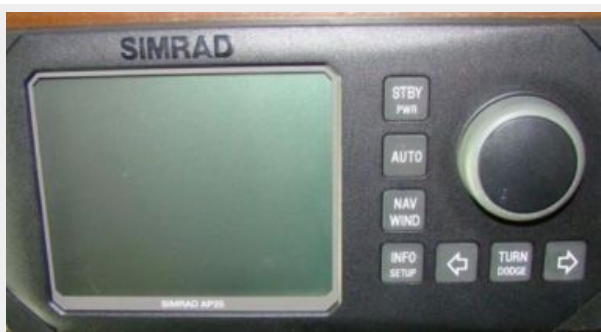
44. Water Heater



45. Air Conditioners



46. Simrad Auto-Pilot



47. Garmin GPS



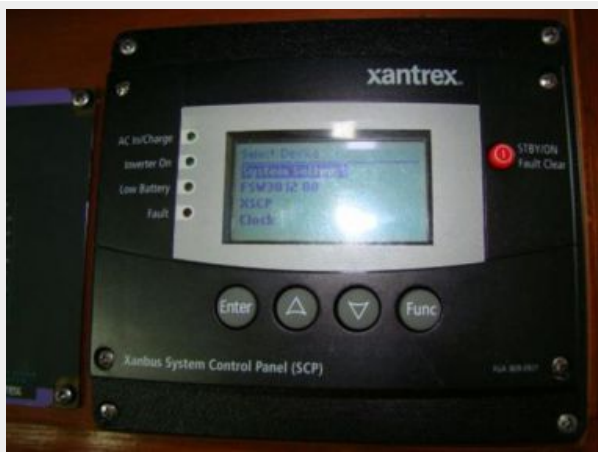
48. Uniden VHF



49. Simrad Radar



50. Xantrex System Controls



51. Pioneer Stereo Controls



52. Barometer



53. Helm Intercom



54. Bosch Dishwasher (1)



55. Mocrowave



56. Stove Top



57. Fridge-Freezer



58. Galley Intercom



59. Washer & Dryer



60. Sun Deck Bench Seats



60. Sun Deck Teak Table



61. Sun Deck System Controls



62 Sun Deck Wine Fridge + Mini Fridge



63. Davit Winch



64. Davit Controls



65. Tender Mercury 25 HP



66. Air Horn



67. Radar Dome



68. Windlass Foot Controls



69. Search Light



70. Shore Power



71. Radar Arch + Bimini Top Frame



72. Simply the best...



CONTACTS

Andrey Shestakov, leading yacht broker of the sales department of Shestakov Yacht Sales Inc. Shestakov Yacht Sales Inc., the official representative of the Miami/Fort Lauderdale FL headquarters.

Contact details

Email: andrey@shestakovyachtsales.com

Web: shestakovyachtsales.com/en/

Telephones

USA: +1(954)274-4435

Office hours

Monday – Saturday: **9:00 - 21:00** EDT

Sunday: **closed**

Address



Harbour Towne Marina, 850 NE 3rd St,
STE 213, Dania, FL 33004