

## KID SQUID — SEA FORCE IX



**Builder:** SEA FORCE IX

**Year Built:** 2020

**Model:** Sport Fisherman

**Price:** PRICE ON APPLICATION

**Location:** United States

**LOA:** 50' 5" (15.37m)

**Beam:** 14' 8" (4.47m)

**Min Draft:** 2' 0" (0.61m)

**Max Draft:** 3' 0" (0.91m)

Our experienced yacht broker, Andrey Shestakov, will help you choose and buy a yacht that best suits your needs **KID SQUID — SEA FORCE IX** from our catalogue. Presently, at Shestakov Yacht Sales Inc., we have a wide variety of yachts available on our sale's list. We also work in close contact with all the big yacht manufacturers from all over the world.

If you would like to buy a yacht **KID SQUID — SEA FORCE IX** or would like help answering any questions concerning purchasing, selling or chartering a yacht, please call **+1(954)274-4435**

# TABLE OF CONTENTS

TABLE OF CONTENTS	2
SPECIFICATIONS	4
Overview	4
Basic Information	5
Dimensions	5
Speed, Capacities and Weight	5
Accommodations	5
Hull and Deck Information	5
Engine Information	6
DETAILED INFORMATION	7
SEA FORCE IX 51 Center Console/Sportfish	7
Exclusions	12
Disclaimer	12
PHOTOS	13
7713910_20210113112107135_1_XLARGE	13
7713910_20210113112050193_1_XLARGE	13
7713910_20210113112143904_1_XLARGE	13
7713910_20210113112202320_1_XLARGE	13
7713910_20210113112031220_1_XLARGE	13
7713910_20210113112215509_1_XLARGE	13
7713910_20210115062942969_1_XLARGE	14
7713910_20210115062922899_1_XLARGE	14
7713910_20210115062924863_1_XLARGE	14
7713910_20210115062926916_1_XLARGE	14
7713910_20210115062948963_1_XLARGE	14
7713910_20210115062951228_1_XLARGE	14
7713910_20210115063003005_1_XLARGE	14
7713910_20210115063004983_1_XLARGE	14

7713910_20210115063007013_1_XLARGE	15
7713910_20210115062957042_1_XLARGE	15
7713910_20210115062958948_1_XLARGE	15
7713910_20210115063001030_1_XLARGE	15
7713910_20210115062928881_1_XLARGE	15
7713910_20210115062930904_1_XLARGE	15
7713910_20210115062934883_1_XLARGE	15
7713910_20210115062954944_1_XLARGE	15
7713910_20210115062953003_1_XLARGE	16
7713910_20210115062932892_1_XLARGE	16
7713910_20210115062936977_1_XLARGE	16
7713910_20210115062938916_1_XLARGE	16
7713910_20210115062940969_1_XLARGE	16
7713910_20210115063009040_1_XLARGE	16
7713910_20210115062944919_1_XLARGE	16
7713910_20210115062946932_1_XLARGE	16
CONTACTS	17
Contact details	17
Telephones	17
Office hours	17
Address	17

---

# SPECIFICATIONS

---

## Overview

---

### 2020 Sea Force IX 51 Center Console/Sportfish

#### MORE PHOTOS TO COME!

**Sea Force IX 51** was launched in 2020 and she truly is one of a kind. If you're looking for a true one of a kind boat that checks off all the boxes, this boat must be added to your list. She's exceptionally different than any other manufacturer out there with features like no other. Her profile is unmatched along with all of her top-quality fit and finish items that make this boat stand tall in a class of her own. Her plateau is based upon having the performance and speed of a center console matched with the comfort, luxury, and sleeping accommodations of a sportfishing boat. Her deep V hull and design provide a great ride in both calm and choppy sea conditions getting you to your destination without any hesitations.

**The Sea Force IX 51** is not only a high-end, and completely tricked out offshore fishing vessel, she's also the perfect family boat for day cruises, snorkeling/diving, and anchoring up at a favorite sandbar. Her tower serves as a great spot to drive while hunting for fish offshore or to sit back and hang out and watch the world around you at the sandbar or offshore. The helm is another great area with state of the art Simrad electronics and completely closed in and protected from bad weather elements. Her cabin offers a great layout with every inch of space being accounted for.

**The Sea Force IX 51** is also meant for long-range fishing trips whether they're one day, overnight trip, or a couple of nights and days offshore, running out of fuel and power shouldn't be a concern or having to worry about keeping food and drinks cold or stowed away. **Some key features for this:**

- Equipped with a 16kw Kohler diesel generator with a separate 50 gallons of diesel fuel
- 1000 gallons of fuel between 3 tanks
- State of the art suite of Simrad electronics with the latest software
- Seakeeper 6
- Powered by Quint Mercury 450 R motors with the joystick and skyhook
- 50 + exterior rod holders
- Several conveniently located tackle drawers
- "Attack Rack" Actuated 15-rod holder rod rack that stores the drop in transom livewell seat
- 3 A/C units to keep you comfortable in the hot weather elements
- Capable of sleeping up to 8 people comfortably
- Multiple isotherm refrigerators and freezer
- Samsung Convection microwave
- Private head with separate shower inside
- 2 molded cockpit 600 quart insulated fish boxes with insta freeze

- 4 pressurized coil wrapped livewells- 2 35 gallons, 2 60 gallon

## Basic Information

---

**Category:** Sport Fisherman

**Model Year:** 2020

**Year Built:** 2020

**Country:** United States

## Dimensions

---

**LOA:** 50' 5" (15.37m)

**Beam:** 14' 8" (4.47m)

**Min Draft:** 2' 0" (0.61m)

**Max Draft:** 3' 0" (0.91m)

**Clearance:** 16' 0" (4.88m)

## Speed, Capacities and Weight

---

**Displacement:** 40000 Pounds

**Water Capacity:** 150 Gallons

**Holding Tank:** 40 Gallons

**Fuel Capacity:** 1000 Gallons

## Accommodations

---

**Total Cabins:** 1

**Total Heads:** 1

## Hull and Deck Information

---

**Hull Material:** Fiberglass

## Engine Information

---

**Engines:** 4

**Manufacturer:** Mercury

**Model:** 450 R

**Engine Type:** Outboard

**Fuel Type:** Gas/Petrol

---

# DETAILED INFORMATION

---

## SEA FORCE IX 51 Center Console/Sportfish

---

### Hull & Deck:

- "JIG BUILT"
- Awlgrip painted black hull
- Awlgrip painted topsides
- Molded cockpit port and starboard 600 quarts insulated fish boxes
- Molded port and starboard insulated fish boxes in the walkways midship to bow
- Molded cockpit center split hatch for machinery access and removal
- Molded bow hatch for windlass access and fender/dock lines storage
- Molded fore hatch for bow thruster and storage
- Molded port and starboard step hatches for rod storage that is lockable
- Molded hardtop with custom aluminum structural supports faired and painted
- Portside dive door that swings inboard
- Custom acrylic sliding cabin entry hatch that is lockable and slides behind the helm
- Zipwake trim tabs
- 4 Lumishore LED Underwater lights between motors with their own thru-holes
- 2 Lumishore LED Underwater lights facing down with their own thru-holes
- Thru-hull stainless steel anchor chute- custom bow guard
- MarineMat flooring throughout the exterior
- Glendinning hose master hose coils for freshwater and raw water at the anchor locker
- Eight 12" cleats
- 1.5-inch fuel fills (3)
- 1.5-inch freshwater fill
- 1.5-inch waste discharge
- 1.5-inch diesel fill
- Gunnel mounted fishing rod racks both port and starboard

### Electronics Package:

- 1 Simrad NSO Evo 3 24" multi-functional display screen at the helm which can also be repeated to the cabin Samsung TV via HDMI
- 4 Simrad NSS12 Evo 3 multi-functional display screens- 2 at the helm, 1 in the tower, 1 in the cockpit
- Simrad TXL-10S-4 10kw 4' open array radar
- 2 Simrad RS40 VHF radios at the helm
- 2 Simrad HS40 wireless handset
- 1 Simrad IS42 Instrument display at the helm
- 2 2.5m VHF antennas
- Airmar CM-599 transducer
- B175 transducer

- Structure scan 3D transducer
- FLIR M-324 Camera (wired into the Simrad screens)
- Nite Track Marine CCD Night Vision Camera (wired into the Simrad screens)
- JL Audio Media Master 100s with JL Audio and Wetsounds speakers and subwoofers
- 4 JL Audio Amps
- 2 soundbars
- 7 Subwoofers: 8" in the cabin, 6 10" throughout the exterior
- 14 JL Audio speakers combined between models 6.5 and 7.7
- Sat FI Phone

### **Mechanical Equipment:**

- Quint Mercury 450R engines JPO joystick with skyhook position holding
- Seakeeper 6 gyro stabilizer
- Full Simrad electronics package
- Hydraulic actuated 15-rod holder rod rack
- Diesel 16kw Kohler generator with a separate 50 gal tank for diesel
- Coil wrapped freezer fish boxes
- Eskimo 500 lbs/day Ice Maker
- Zipwake trim tabs
- 200 gallons total in 4 pressurized coil-wrapped livewells with 3 2500 Hooker variable pumps that can also act as a fish box freezer. This whole system works with adjustments of a valve
- Easy Puller EZ-6 Rebel Windlass with a Lewmar SS DTX 55 lbs anchor
- Vetus 8" 12V DC Bow Thruster
- 10 31-AGM 12V Batteries- 1 for each engine with disconnect, 1 for generator with disconnect, 2 for ship service parallel wired with disconnect switch, 2 for the windlass and bow thruster parallel wired with disconnect switch
- 2 40 amp battery chargers
- 1 50 amp shore power cord
- Emergency paralleling solenoids
- Main ship service selector breaker panel port side entry of cabin
- 2 bilge areas with 3 pumps that are both automatic and manually operated
- 2 high water sensors
- 1 4" Axial blower evacuating machinery space
- 1 3" Axial blower evacuating head smells
- 3 Webasto 16,000 BTU Marine A/C units with thermostats- 2 in the cabin, 1 at the helm
- Livewell pump rotary flow control at the helm
- Alarm systems monitor high water, smoke, and carbon monoxide with visual and audible alarms
- Fire system machinery area is protected with independent self-contained fire bottle with discharge switch
- Fire bottle discharge to shut down generator and area blower
- Shore water inlet with pressure reducer



**Cabin:**

- Master stateroom with a queen berth forward with privacy pocket doors separator
- Queen berth aft of cabin entry and exit steps
- Dinette sofa converts into large over/under bunks
- High gloss teak table on pedestal
- Galley with Corian countertops
- Kenyon 2-burner stovetop
- Stainless steel Isotherm refrigerator
- Stainless steel Isotherm freezer
- Samsung convection microwave oven
- Stainless steel sink
- Glass tile backsplash in the galley
- Quartersawn teak veneer cabinetry throughout stateroom and the rest of the cabin with 60/40 satin finish
- Dimmable LED courtesy direct and indirect lighting
- Amtico teak & holly flooring
- 2 16,000 Webasto A/C units with 2 thermostats- one in the master stateroom, the other at the cabin entry
- 7' headroom
- Main ship service selector breaker panel port side entry of cabin
- 2 Samsung HDTV- 1 in the master stateroom, 1 above galley countertops
- Full head with a marine electric flush toilet, stainless steel freshwater sink, and a separate walk-in shower
- Full glass tile in the head
- 2 20" ceiling hatches
- Side windows tinted glass bonded into molded receivers
- Port & Starboard opening portlights in aft berth area

**Helm:**

- Molded fiberglass command helm station with full engine instrumentations and controls
- Protected by a hardtop, enclosed by premium glass, and roll up poly isinglass
- 1 Simrad NSO Evo3 24" multi-function display screen that repeats down to the cabin TV via HDMI
- 2 Simrad NSS12 Evo3 multi-function display screens
- 2 Simrad RS40 VHF radio
- Simrad IS42 instrument display
- C-zone switching through the Simrad screens
- Mercury SmartCraft throttles
- Mercury JPO joystick with skyhook position holding
- Mercury start/stop push buttons for each engine
- Mercury individual engine trim tabs or All at once tab
- 16,000 BTU Webasto A/C unit with helm thermostat
- Edson steering wheel with hydraulic steering

- Bow thruster control
- FLIR M-324 control
- Zipwake trim tabs control
- Multi-color LED courtesy direct and indirect lighting
- Easy Puller EZ-6 windlass deploy and retrieve lever
- 1/2" thick teak with a natural gloss finish
- JL Audio Media Master 100s stereo radio
- LED illuminated switch panel push buttons for lights, bilges, etc.
- Bilge indicator
- 2 Fireboy fire suppression system indicator
- 2 refrigeration chilled cupholders
- Window wiper control and spritzer control
- Isotherm refrigerator port side
- Battery switch compartment starboard under the helm station
- Access compartment to wiring under the helm
- 2 dash storage boxes with USB ports
- Oversized overhead rod storage
- Molded aft helm wrap around seating with a teak gloss table and a filler cushion to match seating
- Aft wrap around U-lounge helm seating gives access to the ice maker, A/C unit, etc.
- Aft wrap around U-lounge helm teak table lowers to the level of the seating to make a double berth
- 4 cupholders in the aft wrap around U-lounge seating
- Aft overhead compartment gives access to the Miya Enoch US-9R teaser reels
- Hardtop access hatch and steps for tower access
- Premium full height glass windshield with wiper and spritzers
- Additional port and starboard windows, and aft corners to match the windshield
- Companionway entry and exit port and starboard with roll-up poly isinglass
- Aft roll up poly isinglass window

### **Tower/Hardtop:**

- Molded hardtop with custom aluminum structural supports faired and painted
- Lockable overhead rod storage in hardtop above the helm
- Lockable aft overhead compartment gives access to Miya Enoch US-9R teaser reels
- Hatch in hardtop for access to the tower with folding steps on the inside of the port side
- Custom bolster bench seat
- Full helm with tower hardtop
- Edson steering wheel with hydraulic steering
- Simrad NSS12 multi-function unit
- Mercury SmartCraft throttles
- Mercury JPO joystick with skyhook position holding
- Bow thruster control
- Mercury start/stop push buttons for each engine

- Mercury individual engine or All engine trim levers
- Zipwake trim tabs control
- FLIR M-324 Camera
- Nite Track Marine CCD Night Vision camera
- Simrad TXL-10S-4 10kw 4' Open array radar
- LED running lights
- Multi-color direct and indirect courtesy lighting
- Lumitec LED spreader lights for the cockpit and bow
- 2 Lumitec LED Razor Bar spreader lights- both for the cockpit
- Dual trumpet airhorns
- JL Audio speakers
- Multi-color LED courtesy direct and indirect lighting
- HD Bluewater bases for Gemlux carbon fiber outriggers and a Rupp base matching center rigger that is all internally rigged
- 8 person life raft
- Actuated 15 fishing rods rod rack
- 5 additional rod holders mounted in the tower frame behind the tower bench
- 2 2.5m VHF antennas

**Bow:**

- Molded bow hatch for windlass access and fender/dock line storage
- Molded fore hatch for bow thruster and storage
- Removeable sunpad
- Forward-facing settee with seatback on slides
- Port & Starboard rear-facing seating molded into the corners with a center filler cushion
- Fiberglass Hi-Lo bow table goes up and down but doesn't go flush into the deck due to the anchor equipment
- Bow table can also serve as a casting platform for live bait or jig fishing. The table is capable of up to 440 lbs of weight
- Easy Puller EZ-6 Windlass with a Lewmar SS DTX 55 lbs anchor with 30' of chain, 30' of normal anchor rode, and 900' of dynema rode
- 2 washdown hoses both freshwater and saltwater with quick connects
- Remote for windlass
- 4 cupholders

**Cockpit/Transom:**

- Molded prep/rigging center with three lids
- Simrad NSS12 multi-function display screen
- Port & Starboard tackle storage lockers
- Stainless steel Isotherm refrigerator and freezer
- Insulated ice tub compartment
- Freshwater sink
- Two tackle cabinets- 1 starboard and 1 port

- 4 cupholders
- 4 Pressurized Coil wrapped Livewells- 2 35 gallons and 2 60 gallon
- 2 transom doors
- 2 washdown hoses with quick connects
- 7-rod holders centerline behind transom livewells
- Lemco lever for raising and lowering actuated 15-rod holder rod rack
- Lumitec Razor spreader light bar
- 2 Lumitec LED spreader lights
- Multi-color LED courtesy direct and indirect lighting
- Port & Starboard coaming boards 3/4" thick teak with a natural gloss finish
- Palm Beach helm pod & rocket launcher with ultra-high gloss finish on the back of transom livewells

## Exclusions

---

Owner's personal belongings.

## Disclaimer

---

The Company offers the details of this vessel or yacht in good faith but cannot guarantee or warrant the accuracy of this information nor warrant the condition of the vessel. A buyer should instruct his representatives, agents, or his surveyors, to investigate such details as the buyer desires validated. This vessel or yacht is offered subject to prior sale, price change, or withdrawal without notice.

# PHOTOS

7713910\_20210113112050193\_1\_XLARGE



7713910\_20210113112107135\_1\_XLARGE



7713910\_20210113112143904\_1\_XLARGE



7713910\_20210113112202320\_1\_XLARGE



7713910\_20210113112215509\_1\_XLARGE



7713910\_20210113112031220\_1\_XLARGE





7713910\_20210115062942969\_1\_XLARGE



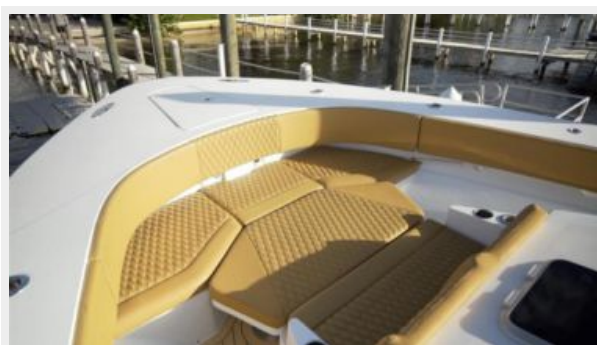
7713910\_20210115062922899\_1\_XLARGE



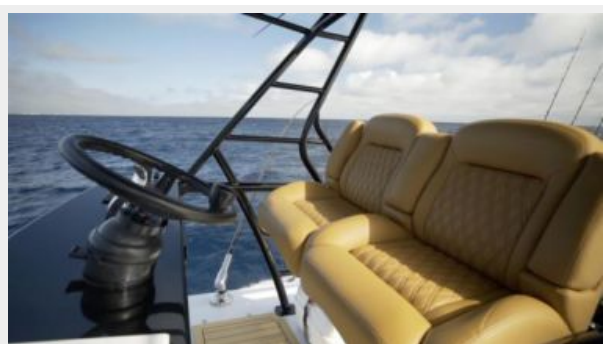
7713910\_20210115062924863\_1\_XLARGE



7713910\_20210115062926916\_1\_XLARGE



7713910\_20210115062948963\_1\_XLARGE



7713910\_20210115062951228\_1\_XLARGE



7713910\_20210115063003005\_1\_XLARGE



7713910\_20210115063004983\_1\_XLARGE



7713910\_20210115063007013\_1\_XLARGE



7713910\_20210115062957042\_1\_XLARGE



7713910\_20210115062958948\_1\_XLARGE



7713910\_20210115063001030\_1\_XLARGE



7713910\_20210115062928881\_1\_XLARGE



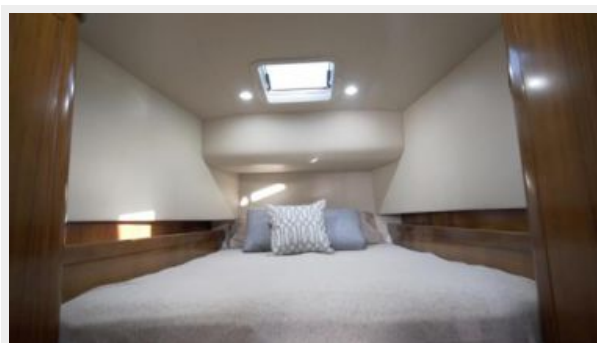
7713910\_20210115062930904\_1\_XLARGE



7713910\_20210115062934883\_1\_XLARGE



7713910\_20210115062954944\_1\_XLARGE





7713910\_20210115062953003\_1\_XLARGE



7713910\_20210115062932892\_1\_XLARGE



7713910\_20210115062936977\_1\_XLARGE



7713910\_20210115062938916\_1\_XLARGE



7713910\_20210115062940969\_1\_XLARGE



7713910\_20210115063009040\_1\_XLARGE



7713910\_20210115062944919\_1\_XLARGE



7713910\_20210115062946932\_1\_XLARGE





# CONTACTS

---

Andrey Shestakov, leading yacht broker of the sales department of Shestakov Yacht Sales Inc. Shestakov Yacht Sales Inc., the official representative of the Miami/Fort Lauderdale FL headquarters.

## Contact details

---

Email: **andrey@shestakovyachtsales.com**

Web: [shestakovyachtsales.com/en/](http://shestakovyachtsales.com/en/)

## Telephones

---

USA: **+1(954)274-4435**

## Office hours

---

Monday – Saturday: **9:00 - 21:00 EDT**

Sunday: **closed**

## Address

---



Harbour Towne Marina, 850 NE 3rd St,  
STE 213, Dania, FL 33004