

## KID SQUID — SEA FORCE IX



**Судостроитель:** SEA FORCE IX

**Год постройки:** 2020

**Модель:** Катер для спортивной рыбалки

**Цена:** **ЦЕНА ЯХТЫ ПО ЗАПРОСУ**

**Местонахождение:** United States

**Длина общая:** 50' 5" (15.37m)

**Ширина:** 14' 8" (4.47m)

**Мин. осадка:** 2' 0" (0.61m)

**Макс. осадка:** 3' 0" (0.91m)

Купить **KID SQUID — SEA FORCE IX** а также выбрать подходящую вам яхту из нашего каталога яхт вам поможет опытный яхтенный брокер Андрей Шестаков. На сегодняшний день компания **Shestakov Yacht Sales Inc.** имеет большое количество яхт в собственном списке продаж, а также тесно сотрудничает со всеми крупными яхтенными производителями по всему миру.

Для того чтобы купить яхту **KID SQUID — SEA FORCE IX** а также проконсультироваться по любому вопросу связанному с покупкой, продажей, чартером яхт позвоните по телефону **+7(918)465-66-44**.

# ОГЛАВЛЕНИЕ

ОГЛАВЛЕНИЕ	2
ХАРАКТЕРИСТИКИ	4
Обзор	4
Основная информация	5
Размеры	5
Скорость, вместимость и масса	5
Размещение	5
Корпус и палуба	5
Информация о двигателе	6
ПОДРОБНОЕ ОПИСАНИЕ	7
SEA FORCE IX 51 Center Console/Sportfish	7
Исключения	12
Отказ от ответственности	12
ФОТОГРАФИИ	13
7713910_20210113112107135_1_XLARGE	13
7713910_20210113112050193_1_XLARGE	13
7713910_20210113112143904_1_XLARGE	13
7713910_20210113112202320_1_XLARGE	13
7713910_20210113112031220_1_XLARGE	13
7713910_20210113112215509_1_XLARGE	13
7713910_20210115062942969_1_XLARGE	14
7713910_20210115062922899_1_XLARGE	14
7713910_20210115062924863_1_XLARGE	14
7713910_20210115062926916_1_XLARGE	14
7713910_20210115062948963_1_XLARGE	14
7713910_20210115062951228_1_XLARGE	14
7713910_20210115063003005_1_XLARGE	14
7713910_20210115063004983_1_XLARGE	14

7713910_20210115063007013_1_XLARGE	15
7713910_20210115062957042_1_XLARGE	15
7713910_20210115062958948_1_XLARGE	15
7713910_20210115063001030_1_XLARGE	15
7713910_20210115062928881_1_XLARGE	15
7713910_20210115062930904_1_XLARGE	15
7713910_20210115062934883_1_XLARGE	15
7713910_20210115062954944_1_XLARGE	15
7713910_20210115062953003_1_XLARGE	16
7713910_20210115062932892_1_XLARGE	16
7713910_20210115062936977_1_XLARGE	16
7713910_20210115062938916_1_XLARGE	16
7713910_20210115062940969_1_XLARGE	16
7713910_20210115063009040_1_XLARGE	16
7713910_20210115062944919_1_XLARGE	16
7713910_20210115062946932_1_XLARGE	16
<b>КОНТАКТЫ</b>	<b>17</b>
Контактная информация	17
Телефоны	17
Время работы	17
Адрес	17

# ХАРАКТЕРИСТИКИ

## Обзор

### 2020 Sea Force IX 51 Center Console/Sportfish

#### MORE PHOTOS TO COME!

**Sea Force IX 51** was launched in 2020 and she truly is one of a kind. If you're looking for a true one of a kind boat that checks off all the boxes, this boat must be added to your list. She's exceptionally different than any other manufacturer out there with features like no other. Her profile is unmatched along with all of her top-quality fit and finish items that make this boat stand tall in a class of her own. Her plateau is based upon having the performance and speed of a center console matched with the comfort, luxury, and sleeping accommodations of a sportfishing boat. Her deep V hull and design provide a great ride in both calm and choppy sea conditions getting you to your destination without any hesitations.

**The Sea Force IX 51** is not only a high-end, and completely tricked out offshore fishing vessel, she's also the perfect family boat for day cruises, snorkeling/diving, and anchoring up at a favorite sandbar. Her tower serves as a great spot to drive while hunting for fish offshore or to sit back and hang out and watch the world around you at the sandbar or offshore. The helm is another great area with state of the art Simrad electronics and completely closed in and protected from bad weather elements. Her cabin offers a great layout with every inch of space being accounted for.

**The Sea Force IX 51** is also meant for long-range fishing trips whether they're one day, overnight trip, or a couple of nights and days offshore, running out of fuel and power shouldn't be a concern or having to worry about keeping food and drinks cold or stowed away. **Some key features for this:**

- Equipped with a 16kw Kohler diesel generator with a separate 50 gallons of diesel fuel
- 1000 gallons of fuel between 3 tanks
- State of the art suite of Simrad electronics with the latest software
- Seakeeper 6
- Powered by Quint Mercury 450 R motors with the joystick and skyhook
- 50 + exterior rod holders
- Several conveniently located tackle drawers
- "Attack Rack" Actuated 15-rod holder rod rack that stores the drop in transom livewell seat
- 3 A/C units to keep you comfortable in the hot weather elements
- Capable of sleeping up to 8 people comfortably
- Multiple isotherm refrigerators and freezer
- Samsung Convection microwave
- Private head with separate shower inside
- 2 molded cockpit 600 quart insulated fish boxes with insta freeze

- 4 pressurized coil wrapped livewells- 2 35 gallons, 2 60 gallon

## Основная информация

**Тип судна:** Катер для спортивной рыбалки

**Модельный год:** 2020

**Год постройки:** 2020

**Страна:** United States

## Размеры

**Длина общая:** 50' 5" (15.37m)

**Ширина:** 14' 8" (4.47m)

**Мин. осадка:** 2' 0" (0.61m)

**Макс. осадка:** 3' 0" (0.91m)

**Трапы:** 16' 0" (4.88m)

## Скорость, вместимость и масса

**Водоизмещение:** 40000 Pounds

**Вместимость воды:** 150 Gallons

**Вместимость сточного бака:** 40 Gallons

**Объем топливного бака:** 1000 Gallons

## Размещение

**Всего кают:** 1

**Всего ком. состава:** 1

## Корпус и палуба

**Материал корпуса:** Fiberglass

## Информация о двигателе

---

**Двигатели:** 4

**Производитель:** Mercury

**Модель:** 450 R

**Тип двигателя:** Outboard

**Тип топлива:** Gas/Petrol

# ПОДРОБНОЕ ОПИСАНИЕ

## SEA FORCE IX 51 Center Console/Sportfish

### Hull & Deck:

- "JIG BUILT"
- Awlgrip painted black hull
- Awlgrip painted topsides
- Molded cockpit port and starboard 600 quarts insulated fish boxes
- Molded port and starboard insulated fish boxes in the walkways midship to bow
- Molded cockpit center split hatch for machinery access and removal
- Molded bow hatch for windlass access and fender/dock lines storage
- Molded fore hatch for bow thruster and storage
- Molded port and starboard step hatches for rod storage that is lockable
- Molded hardtop with custom aluminum structural supports faired and painted
- Portside dive door that swings inboard
- Custom acrylic sliding cabin entry hatch that is lockable and slides behind the helm
- Zipwake trim tabs
- 4 Lumishore LED Underwater lights between motors with their own thru-holes
- 2 Lumishore LED Underwater lights facing down with their own thru-holes
- Thru-hull stainless steel anchor chute- custom bow guard
- MarineMat flooring throughout the exterior
- Glendinning hose master hose coils for freshwater and raw water at the anchor locker
- Eight 12" cleats
- 1.5-inch fuel fills (3)
- 1.5-inch freshwater fill
- 1.5-inch waste discharge
- 1.5-inch diesel fill
- Gunnel mounted fishing rod racks both port and starboard

### Electronics Package:

- 1 Simrad NSO Evo 3 24" multi-functional display screen at the helm which can also be repeated to the cabin Samsung TV via HDMI
- 4 Simrad NSS12 Evo 3 multi-functional display screens- 2 at the helm, 1 in the tower, 1 in the cockpit
- Simrad TXL-10S-4 10kw 4' open array radar
- 2 Simrad RS40 VHF radios at the helm
- 2 Simrad HS40 wireless handset
- 1 Simrad IS42 Instrument display at the helm
- 2 2.5m VHF antennas
- Airmar CM-599 transducer
- B175 transducer

- Structure scan 3D transducer
- FLIR M-324 Camera (wired into the Simrad screens)
- Nite Track Marine CCD Night Vision Camera (wired into the Simrad screens)
- JL Audio Media Master 100s with JL Audio and Wetsounds speakers and subwoofers
- 4 JL Audio Amps
- 2 soundbars
- 7 Subwoofers: 8" in the cabin, 6 10" throughout the exterior
- 14 JL Audio speakers combined between models 6.5 and 7.7
- Sat FI Phone

### **Mechanical Equipment:**

- Quint Mercury 450R engines JPO joystick with skyhook position holding
- Seakeeper 6 gyro stabilizer
- Full Simrad electronics package
- Hydraulic actuated 15-rod holder rod rack
- Diesel 16kw Kohler generator with a separate 50 gal tank for diesel
- Coil wrapped freezer fish boxes
- Eskimo 500 lbs/day Ice Maker
- Zipwake trim tabs
- 200 gallons total in 4 pressurized coil-wrapped livewells with 3 2500 Hooker variable pumps that can also act as a fish box freezer. This whole system works with adjustments of a valve
- Easy Puller EZ-6 Rebel Windlass with a Lewmar SS DTX 55 lbs anchor
- Vetus 8" 12V DC Bow Thruster
- 10 31-AGM 12V Batteries- 1 for each engine with disconnect, 1 for generator with disconnect, 2 for ship service parallel wired with disconnect switch, 2 for the windlass and bow thruster parallel wired with disconnect switch
- 2 40 amp battery chargers
- 1 50 amp shore power cord
- Emergency paralleling solenoids
- Main ship service selector breaker panel port side entry of cabin
- 2 bilge areas with 3 pumps that are both automatic and manually operated
- 2 high water sensors
- 1 4" Axial blower evacuating machinery space
- 1 3" Axial blower evacuating head smells
- 3 Webasto 16,000 BTU Marine A/C units with thermostats- 2 in the cabin, 1 at the helm
- Livewell pump rotary flow control at the helm
- Alarm systems monitor high water, smoke, and carbon monoxide with visual and audible alarms
- Fire system machinery area is protected with independent self-contained fire bottle with discharge switch
- Fire bottle discharge to shut down generator and area blower
- Shore water inlet with pressure reducer



**Cabin:**

- Master stateroom with a queen berth forward with privacy pocket doors separator
- Queen berth aft of cabin entry and exit steps
- Dinette sofa converts into large over/under bunks
- High gloss teak table on pedestal
- Galley with Corian countertops
- Kenyon 2-burner stovetop
- Stainless steel Isotherm refrigerator
- Stainless steel Isotherm freezer
- Samsung convection microwave oven
- Stainless steel sink
- Glass tile backsplash in the galley
- Quartersawn teak veneer cabinetry throughout stateroom and the rest of the cabin with 60/40 satin finish
- Dimmable LED courtesy direct and indirect lighting
- Amtico teak & holly flooring
- 2 16,000 Webasto A/C units with 2 thermostats- one in the master stateroom, the other at the cabin entry
- 7' headroom
- Main ship service selector breaker panel port side entry of cabin
- 2 Samsung HDTV- 1 in the master stateroom, 1 above galley countertops
- Full head with a marine electric flush toilet, stainless steel freshwater sink, and a separate walk-in shower
- Full glass tile in the head
- 2 20" ceiling hatches
- Side windows tinted glass bonded into molded receivers
- Port & Starboard opening portlights in aft berth area

**Helm:**

- Molded fiberglass command helm station with full engine instrumentations and controls
- Protected by a hardtop, enclosed by premium glass, and roll up poly isinglass
- 1 Simrad NSO Evo3 24" multi-function display screen that repeats down to the cabin TV via HDMI
- 2 Simrad NSS12 Evo3 multi-function display screens
- 2 Simrad RS40 VHF radio
- Simrad IS42 instrument display
- C-zone switching through the Simrad screens
- Mercury SmartCraft throttles
- Mercury JPO joystick with skyhook position holding
- Mercury start/stop push buttons for each engine
- Mercury individual engine trim tabs or All at once tab
- 16,000 BTU Webasto A/C unit with helm thermostat
- Edson steering wheel with hydraulic steering

- Bow thruster control
- FLIR M-324 control
- Zipwake trim tabs control
- Multi-color LED courtesy direct and indirect lighting
- Easy Puller EZ-6 windlass deploy and retrieve lever
- 1/2" thick teak with a natural gloss finish
- JL Audio Media Master 100s stereo radio
- LED illuminated switch panel push buttons for lights, bilges, etc.
- Bilge indicator
- 2 Fireboy fire suppression system indicator
- 2 refrigeration chilled cupholders
- Window wiper control and spritzer control
- Isotherm refrigerator port side
- Battery switch compartment starboard under the helm station
- Access compartment to wiring under the helm
- 2 dash storage boxes with USB ports
- Oversized overhead rod storage
- Molded aft helm wrap around seating with a teak gloss table and a filler cushion to match seating
- Aft wrap around U-lounge helm seating gives access to the ice maker, A/C unit, etc.
- Aft wrap around U-lounge helm teak table lowers to the level of the seating to make a double berth
- 4 cupholders in the aft wrap around U-lounge seating
- Aft overhead compartment gives access to the Miya Enoch US-9R teaser reels
- Hardtop access hatch and steps for tower access
- Premium full height glass windshield with wiper and spritzers
- Additional port and starboard windows, and aft corners to match the windshield
- Companionway entry and exit port and starboard with roll-up poly isinglass
- Aft roll up poly isinglass window

### **Tower/Hardtop:**

- Molded hardtop with custom aluminum structural supports faired and painted
- Lockable overhead rod storage in hardtop above the helm
- Lockable aft overhead compartment gives access to Miya Enoch US-9R teaser reels
- Hatch in hardtop for access to the tower with folding steps on the inside of the port side
- Custom bolster bench seat
- Full helm with tower hardtop
- Edson steering wheel with hydraulic steering
- Simrad NSS12 multi-function unit
- Mercury SmartCraft throttles
- Mercury JPO joystick with skyhook position holding
- Bow thruster control
- Mercury start/stop push buttons for each engine

- Mercury individual engine or All engine trim levers
- Zipwake trim tabs control
- FLIR M-324 Camera
- Nite Track Marine CCD Night Vision camera
- Simrad TXL-10S-4 10kw 4' Open array radar
- LED running lights
- Multi-color direct and indirect courtesy lighting
- Lumitec LED spreader lights for the cockpit and bow
- 2 Lumitec LED Razor Bar spreader lights- both for the cockpit
- Dual trumpet airhorns
- JL Audio speakers
- Multi-color LED courtesy direct and indirect lighting
- HD Bluewater bases for Gemlux carbon fiber outriggers and a Rupp base matching center rigger that is all internally rigged
- 8 person life raft
- Actuated 15 fishing rods rod rack
- 5 additional rod holders mounted in the tower frame behind the tower bench
- 2 2.5m VHF antennas

#### **Bow:**

- Molded bow hatch for windlass access and fender/dock line storage
- Molded fore hatch for bow thruster and storage
- Removeable sunpad
- Forward-facing settee with seatback on slides
- Port & Starboard rear-facing seating molded into the corners with a center filler cushion
- Fiberglass Hi-Lo bow table goes up and down but doesn't go flush into the deck due to the anchor equipment
- Bow table can also serve as a casting platform for live bait or jig fishing. The table is capable of up to 440 lbs of weight
- Easy Puller EZ-6 Windlass with a Lewmar SS DTX 55 lbs anchor with 30' of chain, 30' of normal anchor rode, and 900' of dynema rode
- 2 washdown hoses both freshwater and saltwater with quick connects
- Remote for windlass
- 4 cupholders

#### **Cockpit/Transom:**

- Molded prep/rigging center with three lids
- Simrad NSS12 multi-function display screen
- Port & Starboard tackle storage lockers
- Stainless steel Isotherm refrigerator and freezer
- Insulated ice tub compartment
- Freshwater sink
- Two tackle cabinets- 1 starboard and 1 port

- 4 cupholders
- 4 Pressurized Coil wrapped Livewells- 2 35 gallons and 2 60 gallon
- 2 transom doors
- 2 washdown hoses with quick connects
- 7-rod holders centerline behind transom livewells
- Lemco lever for raising and lowering actuated 15-rod holder rod rack
- Lumitec Razor spreader light bar
- 2 Lumitec LED spreader lights
- Multi-color LED courtesy direct and indirect lighting
- Port & Starboard coaming boards 3/4" thick teak with a natural gloss finish
- Palm Beach helm pod & rocket launcher with ultra-high gloss finish on the back of transom livewells

## Исключения

---

При продаже яхты исключаются личные вещи владельца.

## Отказ от ответственности

---

Компания предоставляет описание судна или яхты добросовестно, но не может гарантировать точность этой информации, а также не ручается за техническое состояние. Покупатель должен проинструктировать своих агентов или оценщиков исследовать представленную информацию более подробно, по собственному желанию. Продажа судна или яхты, изменение цены или снятие с продажи будет происходить без предварительного уведомления.

# ФОТОГРАФИИ

7713910\_20210113112050193\_1\_XLARGE



7713910\_20210113112107135\_1\_XLARGE



7713910\_20210113112143904\_1\_XLARGE



7713910\_20210113112202320\_1\_XLARGE



7713910\_20210113112215509\_1\_XLARGE



7713910\_20210113112031220\_1\_XLARGE



7713910\_20210115062942969\_1\_XLARGE



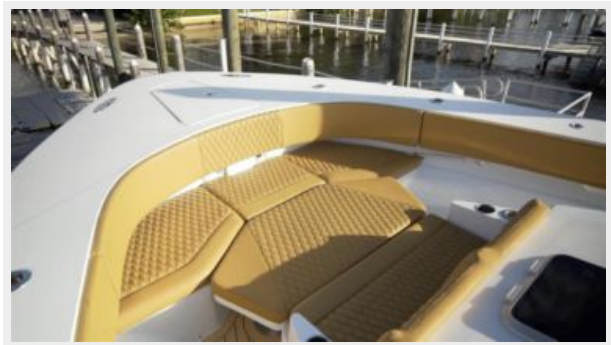
7713910\_20210115062922899\_1\_XLARGE



7713910\_20210115062924863\_1\_XLARGE



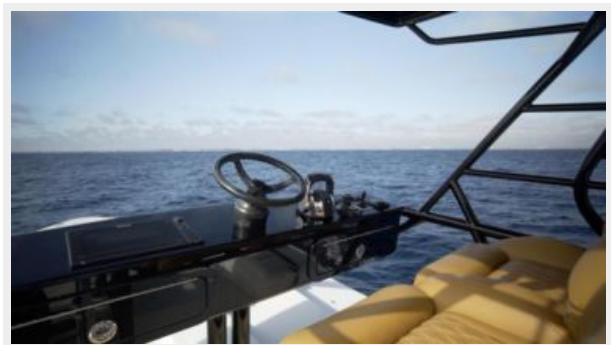
7713910\_20210115062926916\_1\_XLARGE



7713910\_20210115062948963\_1\_XLARGE



7713910\_20210115062951228\_1\_XLARGE



7713910\_20210115063003005\_1\_XLARGE



7713910\_20210115063004983\_1\_XLARGE



7713910\_20210115063007013\_1\_XLARGE



7713910\_20210115062957042\_1\_XLARGE



7713910\_20210115062958948\_1\_XLARGE



7713910\_20210115063001030\_1\_XLARGE



7713910\_20210115062928881\_1\_XLARGE



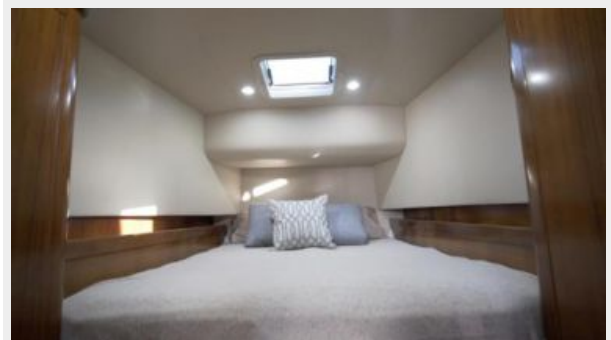
7713910\_20210115062930904\_1\_XLARGE



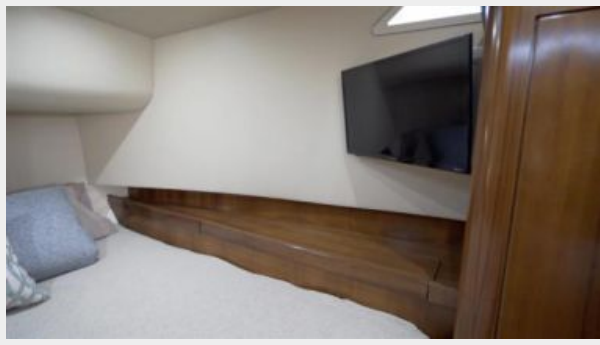
7713910\_20210115062934883\_1\_XLARGE



7713910\_20210115062954944\_1\_XLARGE



7713910\_20210115062953003\_1\_XLARGE



7713910\_20210115062932892\_1\_XLARGE



7713910\_20210115062936977\_1\_XLARGE



7713910\_20210115062938916\_1\_XLARGE



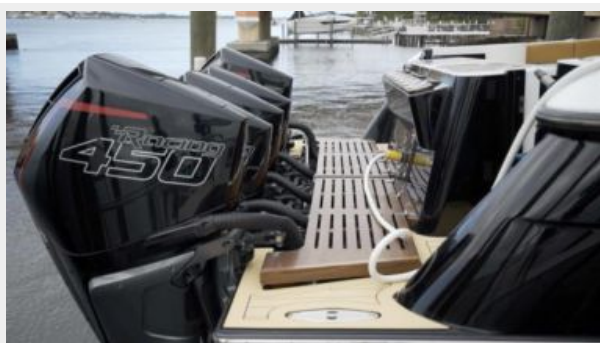
7713910\_20210115062940969\_1\_XLARGE



7713910\_20210115063009040\_1\_XLARGE



7713910\_20210115062944919\_1\_XLARGE



7713910\_20210115062946932\_1\_XLARGE





# КОНТАКТЫ

---

Андрей Шестаков (Andrey Shestakov) – ведущий яхтенный брокер отдела продаж яхт и судов компании Shestakov Yacht Sales Inc. Официальный представитель Shestakov Yacht Sales Inc. для русскоговорящих клиентов в центральном офисе компании в Майами/Форт Лодердейл/Флорида/США.

## Контактная информация

---

Email: [andrey@shestakovyachtsales.com](mailto:andrey@shestakovyachtsales.com)

Web: [shestakovyachtsales.com](http://shestakovyachtsales.com)

## Телефоны

---

Краснодарский край: **+7(918)465-66-44**

США, Майами, Флорида: **+1(954)274-4435**

## Время работы

---

Понедельник – Суббота: **9:00 - 21:00**  
EDT

Воскресенье: **Закрито**

## Адрес

---



Harbour Towne Marina, 850 NE 3rd St,  
STE 213, Dania, FL 33004