

## APRES SAIL — MARINER



**Судостроитель:** MARINER

**Год постройки:** 2005

**Модель:** Trawler Yacht

**Цена:** ЦЕНА ЯХТЫ ПО ЗАПРОСУ

**Местонахождение:** United States

**Длина общая:** 40' 0" (12.19m)

**Ширина:** 13' 1" (3.99m)

**Макс. осадка:** 4' 0" (1.22m)

**Крейс. скорость:** 9 Kts. (10 MPH)

Купить **Apres Sail — MARINER** а также выбрать подходящую вам яхту из нашего каталога яхт вам поможет опытный яхтенный брокер Андрей Шестаков. На сегодняшний день компания **Shestakov Yacht Sales Inc.** имеет большое количество яхт в собственном списке продаж, а также тесно сотрудничает со всеми крупными яхтенными производителями по всему миру.

Для того чтобы купить яхту **Apres Sail — MARINER** а также проконсультироваться по любому вопросу связанному с покупкой, продажей, чартером яхт позвоните по телефону **+7(918)465-66-44**.

# ОГЛАВЛЕНИЕ

ОГЛАВЛЕНИЕ	2
ХАРАКТЕРИСТИКИ	8
Обзор	8
Основная информация	8
Размеры	8
Скорость, вместимость и масса	9
Размещение	9
Корпус и палуба	9
Информация о двигателе	9
ПОДРОБНОЕ ОПИСАНИЕ	10
MAIN DESCRIPTION	10
2005 MARINER 40 ORIENT SEDAN TRAWLER WALK THROUGH	10
2005 Mariner 40 Orient Sedan Trawler Cockpit, Hull	10
2005 Mariner 40 Orient Sedan Trawler Accommodation	11
2005 Mariner 40 Orient Sedan Trawler Navigation an	13
2005 Mariner 40 Orient Sedan Trawler Engine Room a	13
2005 Mariner 40 Orient Sedan Trawler Electrical Sy	13
2005 Mariner 40 Orient Sedan Trawler Deck Equipmen	14
2005 Mariner 40 Orient Sedan Trawler Exclusions	14
2005 Mariner 40 Orient Sedan Trawler Disclaimer	14
Исключения	14
Отказ от ответственности	14
ФОТОГРАФИИ	16
100 HR	16
101 HR	16
111 Exterior Stern	16
110 Exterior Starboard	16
112 Exterior Port	17

113 Exterior Prt Forward	17
114 Cockit to Starboard	17
115 Cockpit to Port	17
116 Salon Door to Starboard	18
117 Salon Door to Port	18
118 Starboard Sidewalk	18
119 Port Sidewalk	18
120 Starboard Foredeck	19
121 Foredeck to Starboard	19
122 Bow	19
123 Foredeck to Port	19
124 Port Foredeck	20
125 Bow to Flybridge	20
126 Forward Hatch	20
130 Flybridge Helm	20
131 Flybridge to Starboard	21
132 Flybridge Chairs	21
133 Flybridge Forward	21
134 Flybridge to Port	21
135 Flybridge to Bow	22
136 Chemical Head	22
137 Chemical Head	22
138 Mast	22
139 Tender	23
200 Interior	23
201 Salon Starboard	23
202 Salon Port	23
203 Salon Aft	24
204 Salon Aft Open Door	24

205 Chart Table	24
206 Int Helm	24
207 Int Helm	25
208 Int Helm	25
209 Int Helm Seat	25
210 Helm Seat Cabinet	25
211 Helm Seat Cabinet	26
212 Starboard Door	26
213 Stbd Door Glass	26
214 Stbd Door Open	26
215 Galley	27
214 Wndshield	27
216 Galley	27
217 Galley Storage	27
219 Galley Counter Storage	28
218 Galley Storage Open	28
220 Galley Cntr Stor Open	28
221 RefrigFreezer	28
222 Dinette	29
223 Electric Panel	29
224 Steps Forward	29
225 Steps Aft	29
226 Steps Storage	30
230 Master	30
231 Master Berth	30
232 Master to Stbd	30
234 Master Forward	30
233 Master to Port	30
236 Master Storage	31

235 Master Storage	31
240 Guest Staeroom	31
241 Guest Aft	31
242 Guest Berth	32
243 Guest Locker	32
245 Head	32
246 Head Vanity	32
247 Head Shower	33
301 IMG_3522	33
302 IMG_3523	33
303 IMG_3525	33
304 IMG_3519	34
310 IMG_3572	34
311 IMG_3573	34
312 IMG_3574	34
313 IMG_3575	35
314 IMG_3576	35
315 IMG_3577	35
316 IMG_3588	35
317 IMG_3592	36
318 IMG_3593	36
319 IMG_3604	36
320 IMG_3501	36
321 IMG_3502	37
322 IMG_3503	37
323 IMG_3504	37
324 IMG_3505	37
325 IMG_3506	37
326 IMG_3507	37

---

327 IMG_3514	38
328 IMG_3513	38
329 IMG_3512	38
330 IMG_3555	38
331 IMG_3560	39
340 IMG_3553	39
341 IMG_3554	39
342 IMG_3556	39
344 IMG_3559	40
343 IMG_3558	40
360 IMG_3495	40
350 IMG_3557	40
361 IMG_3518	41
362 IMG_3517	41
364 IMG_3603	41
363 IMG_3524	41
365 IMG_3511	42
370 IMG_3548	42
380 IMG_3596	42
381 IMG_3597	42
382 IMG_3598	43
383 IMG_3600	43
384 IMG_3601	43
385 IMG_3602	43
391 IMG_3584	43
392 IMG_3585	43
393 IMG_3586	44
394 IMG_3589	44
КОНТАКТЫ	45

---

---

Контактная информация	45
Телефоны	45
Время работы	45
Адрес	45

# ХАРАКТЕРИСТИКИ

## Обзор

NOT AVAILABLE FOR SALE TO US CITIZENS WHILE IN US WATERS!!

Apres-Sail is a very well-kept 40' Mariner Orient sedan trawler. Built overseas, the Mariner Orient was constructed with a heavy, solid fiberglass hull which provides safe and comfortable long-range cruising. The "Europa" styling features a wide, covered walk-around as well as high gunnels, for safe maneuvering around the deck. The covered cockpit is the perfect place to relax at the end of a long day of cruising, while at anchor, or docked at your favorite marina. The teak interior highlights both the materials used and craftsmanship of this beautiful vessel.

The current owners purchased this vessel in 2009, moved her from Sarasota, FL in 2010, and have thoroughly enjoyed cruising in the US, Canada, and the Bahamas. Having just returned from several years in the waters of the Bahamas, she is turn-key ready for her new owners, and is in very nice condition.

Apres-Sail currently has Canadian owners, and a Flag of Registry in Canada. This vessel is NOT AVAILABLE FOR SALE TO US RESIDENTS WHILE IN US WATERS. Proof of non-US citizenship, such as a passport, must be presented to personally inspect this vessel.

## Основная информация

**Тип судна:** Trawler Yacht

**Модельный год:** 2005

**Год постройки:** 2005

**Страна:** United States

## Размеры

**Длина общая:** 40' 0" (12.19m)

**Ширина:** 13' 1" (3.99m)

**Макс. осадка:** 4' 0" (1.22m)

**Трапы:** 23' 0" (7.01m)



---

## Скорость, вместимость и масса

---

**Крейс. скорость:** 9 Kts. (10 MPH)

**Водоизмещение:** 23500 Pounds

**Вместимость воды:** 250 Gallons

**Вместимость сточного бака:** 40 Gallons

**Объем топливного бака:** 300 Gallons

---

## Размещение

---

**Всего кают:** 2

**Всего коек:** 2

**Всего ком. состава:** 1

---

## Корпус и палуба

---

**Материал корпуса:** Fiberglass

---

## Информация о двигателе

---

**Двигатели:** 1

**Производитель:** Cummins

**Модель:** Cummins 6BTA\*5.9M

**Тип двигателя:** Inboard

**Тип топлива:** Diesel

---

# ПОДРОБНОЕ ОПИСАНИЕ

---

## MAIN DESCRIPTION

---

NOT AVAILABLE FOR SALE TO US CITIZENS WHILE IN US WATERS!!

Apres-Sail is a very well-kept 40' Mariner Orient sedan trawler. Built overseas, the Mariner Orient was constructed with a heavy, solid fiberglass hull which provides safe and comfortable long-range cruising. The "Europa" styling features a wide, covered walk-around as well as high gunnels, for safe maneuvering around the deck. The covered cockpit is the perfect place to relax at the end of a long day of cruising, while at anchor, or docked at your favorite marina. The teak interior highlights both the materials used and craftsmanship of this beautiful vessel.

The current owners purchased this vessel in 2009, moved her from Sarasota, FL in 2010, and have thoroughly enjoyed cruising in the US, Canada, and the Bahamas. Having just returned from several years in the waters of the Bahamas, she is turn-key ready for her new owners, and is in very nice condition.

Apres-Sail currently has Canadian owners, and a Flag of Registry in Canada. This vessel is NOT AVAILABLE FOR SALE TO US RESIDENTS WHILE IN US WATERS. Proof of non-US citizenship, such as a passport, must be presented to personally inspect this vessel.

## 2005 MARINER 40 ORIENT SEDAN TRAWLER WALK THROUGH

---

The aft covered cockpit of Apres-Sail has a sliding door that provides access to the salon. The inside helm is forward to starboard, with a door leading to the covered walk-around deck. The galley is on the same level, across from the inside helm. The entire interior of the vessel has a teak and holly sole, in very good condition.

The sleeping accommodations are forward, three steps down. The large head is to starboard, across from the guest stateroom to port. The master stateroom is forward.

## 2005 Mariner 40 Orient Sedan Trawler Cockpit, Hull

---

The 7' x 13' covered cockpit of Apres-Sail has a stern door to the fiberglass swim platform, which has a swim ladder. There are molded, forward facing seats with storage and cushions in the cockpit, as well as a hot/cold fresh water shower. The lazarette is accessible from the center deck hatch, which has dual hydraulic pistons. An Engel refrigerator (or freezer) box is located in

the lazarette, and conveys with the vessel. The cockpit is large enough for a table and chairs for outside dining. The deck is painted grey non-skid. Apres-Sail has a full navy blue cockpit enclosure with both eisenglass and screens. Snap-on canvas doors with eisenglass lead to the wide sidewalks. A tan sun shade fits across the stern of the cockpit. A covered stainless steel ladder with teak steps leads to the flybridge, to port. A teak and etched glass sliding door leads into the salon.

The hull of the 40' Mariner Orient is solid fiberglass, with internal grid molding, and an Interlocks barrier coat. The decks are painted light grey awl-grip non-skid. The wide, covered sidewalks with high gunnels provide safe and easy access to the foredeck. The cap rail is stained teak, with a high gloss finish in very good condition. The stanchions are 1.25" stainless steel. There are six 13" stainless steel hawse pipes with cleats. All of the opening portlights are stainless steel.

The foredeck features a bow pulpit with anchor locker, with a natural teak rack over the Simpson Lawrence anchor windlass with foot controls. A natural teak fender board is stored at the bow pulpit. The ground tackle includes: (1) 45# Mantus anchor, (1) FX-23 Fortress anchor, (1) 33# CQR anchor, and 250' of rode with 40' of chain and 210' of line. A hatch from the forward master stateroom opens to the foredeck. A deck wash-down system is at the bow. There is also an extra 40' chain and 250' rode plus a coil of another 250' rode.

The flybridge is reached by a stainless steel ladder, with teak steps, from the cockpit. A hatch covers the steps. The open area of the flybridge features: a lowerable mast, an electric tender hoist with remote, crane storage, fender racks, and a rail mounted propane grill.

The forward area of the flybridge has a full navy blue enclosure with eisenglass, and features: two Todd navigation chairs, built in settees to starboard and port with storage, and a full helm station. There is a free-standing chemical toilet (never used) which conveys with the vessel. A free-standing Whirlpool Stainless Steel refrigerator/freezer conveys with the vessel, which can be used on the flybridge, since there is an available electrical outlet. The acrylic windshield on the flybridge needs sections replaced.

---

## 2005 Mariner 40 Orient Sedan Trawler Accommodation

---

**SALON AND INSIDE HELM** The salon on Apres-Sail is entered from the cockpit through a teak sliding door, with a double palm tree etched window. An integrated magnetic screen door allows for fresh-air ventilation. There are two neutral colored leatherette free-standing chairs, with a

small table, to starboard. A large cabinet is to port; it currently provides storage, but is plumbed for a washer/dryer unit. The Insignia Roku TV is atop this cabinet. The L-shaped dinette is to port. The neutral leatherette fabric was replaced in 2012 and is in very good condition; there is storage beneath the cushions. A high/low table with folding leaves is available for dining. The dinette converts to a 4.5' x 6' berth. The teak and holly sole, which is throughout the entire vessel, is in very good condition. The windows on both sides of the salon slide open, and are equipped with screens. Custom Hunter Douglass silhouette blinds cover the windows. There are teak hand holds overhead. Access to the engine room is through the sole of the salon. The inside helm is to starboard forward of a cabinet holding the refrigerator/freezer; the top of the cabinet is perfect for charts, and opens to storage. A liquor/glass cabinet drawer slides out from under the helm seat. The cushion for the helm seat matches the dinette. A foot rest folds up for convenience. A sliding teak door, with a double jumping dolphin etched glass window leads to the starboard deck. There are three large windows forward which provide good visibility when piloting from the inside helm. The center window opens for ventilation. There are privacy covers for all three windows. The large area beneath the windows is good for additional storage. The electric panel is on the wall opposite the helm station. The vessel is outfitted with Bose speakers, and the lighting is LED throughout.

**GALLEY** The galley on Apres-Sail is to port, forward of the dinette, and has a U-shape design. The side-by-side Nova Kool refrigerator and freezer are to starboard, across from the main galley area, aft of the interior helm seat. The galley features a double stainless steel sink, and good counter space, with a mottled blue easy-to-clean surface. The primary cooking is done on the Cuisinart double burner induction cooktop (with induction cookware included). There is also a West Bend microwave oven and a large Oster toaster oven at eye level on the shelf below the windshield. Apres-Sail has great galley storage, which includes: a storage cabinet beneath the cooktop with slide-out stainless steel storage racks, cabinets above the sink with louvered doors, deep in-counter storage next to the sink, a cabinet under the sink with a louvered door, a counter-top spice rack, a wall-mounted mug rack, drawers beneath the microwave and oven, and three additional drawers over a louvered cabinet.

**MASTER STATEROOM** The companionway on Apres-Sail is down three steps, which feature additional storage, from the galley. The master stateroom is forward. It features a centerline queen berth. The lower two steps on either side of the berth are the same teak and holly as the sole, but the upper step is padded. There are matching cedar-lined, lighted lockers to both starboard and port with louvered doors, as well as built-in storage with sliding doors, and open/book shelves, as well as four drawers under the berth. There are two reading lights, as well as two overhead LED lights. The two curtained portlights open for fresh air. The headboard cabinet provides access to the anchor locker. There is a hatch over the berth that opens to the foredeck.

**GUEST STATEROOM** A comfortable guest stateroom is amidships, to port on Apres-Sail. It features a double berth with an open shelf above it for more storage. A cedar-lined lighted locker with a louvered door, drawers under the berth, a wall mounted book rack, and three additional drawers provide even more storage. A Dyson DC44 Animal vacuum is mounted on the wall, which will convey with the vessel. Two curtained opening portlights, as well as two reading lights and two overhead LED lights provide plenty of lighting.

**HEAD** The single head on Apres-Sail is to starboard, across from the guest stateroom. It features an electric head, a mirror, good storage, a large vanity with a stainless steel bowl sink, and a separate stall shower with a seat, two teak storage racks and a custom folding door. There is an access panel to the back of the interior helm, which is protected

by a shower curtain. There are two curtained opening portlights for fresh-air and additional ventilation. There is plenty of LED lighting. All of the teak doors in the interior of Apres-Sail have curved tops and louvered bottoms, which really are a nice decorative feature.

---

## 2005 Mariner 40 Orient Sedan Trawler Navigation an

---

- 4K Garmin Closed array radar
- Simrad AP25 autopilot
- Forward looking Sonar - not connected
- Simrad RS35 VHF -lower helm, (2) HS35 Bluetooth remotes on flybridge
- Scad Profile Tank Monitor
- Garmin 4010 Chart plotter (Lower helm station)
- Garmin 4212 Chart plotter (Flybridge)

---

## 2005 Mariner 40 Orient Sedan Trawler Engine Room a

---

- Single 270 HP Cummins Diesel
- 2 Auto Bilge pumps and 1 manual pump
- Smart Charge battery charger with proline battery management system
- Racor 1000 fuel filter
- Reverso 150 Gal/Hr fuel polisher
- Dripless Stuffing box
- Bronze propeller
- Full keel, stainless steel rudder, rudder shoe
- Hot and cold pressurized water
- Vestus Bow Thruster
- Stern Thruster
- (2) Rolls 750 amp house batteries
- (2) 8D starting/thruster/windlass batteries
- Engine alarm system
- Freshwater cooling on engine
- Seacocks on underwater thru-hull fittings
- Smart regulator on the main engine alternator

---

## 2005 Mariner 40 Orient Sedan Trawler Electrical Sy

---

- AC/DC service panel
- 110v electrical outlets
- 10 Gal Marine hot water heater
- Bonding systems with zinc anode
- Automatic switches for two bilge pumps

- Fresh water pump
- 6 KW Onan Generator with Sound Shield
- Battery selector switch
- Smart Plug 50amp shore power inlet
- LED 12v electric lights
- GFCI protection
- DC service panel
- ProSine 2.0 Xantrex inverter/charger on the house system
- (2) Air Conditioning reverse cycle heat

---

## 2005 Mariner 40 Orient Sedan Trawler Deck Equipmen

---

- Windshield wiper
- (2) Morse marine engine control
- Hydraulic steering system
- Electric horn
- Navigation lights
- Dock lines
- Fire extinguishers
- Orange life ring
- Electric windlass w/ remote switch at lower helm
- Electric tender hoist at flybridge boom, remote controlled

---

## 2005 Mariner 40 Orient Sedan Trawler Exclusions

---

The personal belongings of the sellers are excluded.

---

## 2005 Mariner 40 Orient Sedan Trawler Disclaimer

---

The Company offers the details of this vessel in good faith but cannot guarantee or warrant the accuracy of this information nor warrant the condition of the vessel. A buyer should instruct his agents, or his surveyors, to investigate such details as the buyer desires validated. This vessel is offered subject to prior sale, price change, or withdrawal without notice.

---

## Исключения

---

При продаже яхты исключаются личные вещи владельца.

---

## Отказ от ответственности

---

Компания предоставляет описание судна или яхты добросовестно, но не может гарантировать точность этой информации, а также не ручается за техническое состояние. Покупатель должен проинструктировать своих агентов или оценщиков исследовать представленную информацию более подробно, по собственному желанию. Продажа судна или яхты, изменение цены или снятие с продажи будет происходить без предварительного уведомления.

# ФОТОГРАФИИ

100 HR



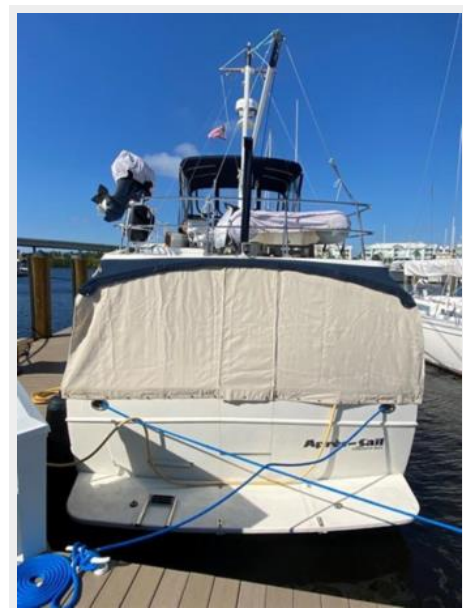
101 HR



110 Exterior Starboard



111 Exterior Stern





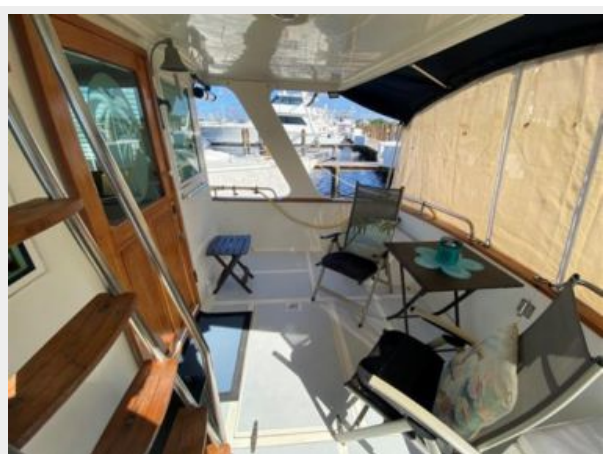
**112 Exterior Port**



**113 Exterior Prt Forward**



**114 Cockpit to Starboard**



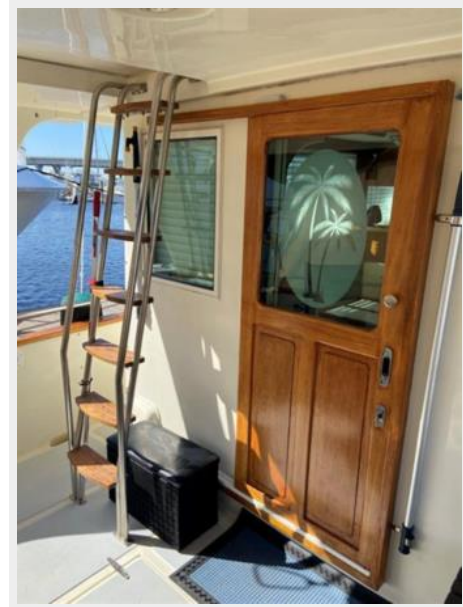
**115 Cockpit to Port**



**116 Salon Door to Starboard**



**117 Salon Door to Port**



**118 Starboard Sidewalk**



**119 Port Sidewalk**

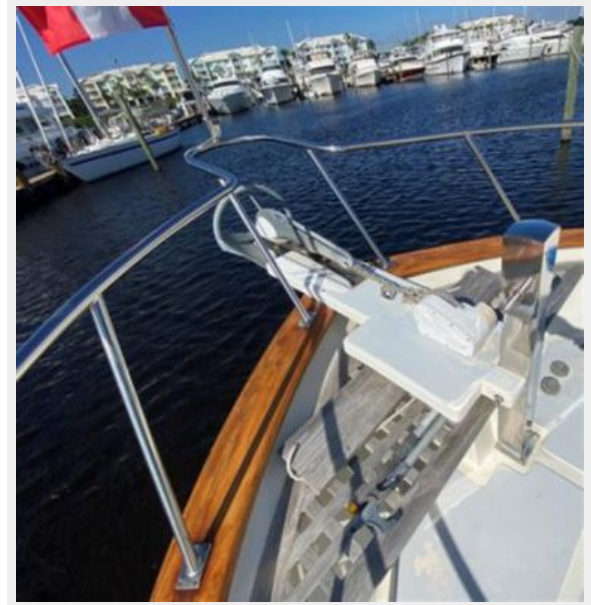




**120 Starboard Foredeck**



**121 Foredeck to Starboard**



**122 Bow**



**123 Foredeck to Port**



**124 Port Foredeck**



**125 Bow to Flybridge**



**126 Forward Hatch**



**130 Flybridge Helm**





**131 Flybridge to Starboard**



**132 Flybridge Chairs**



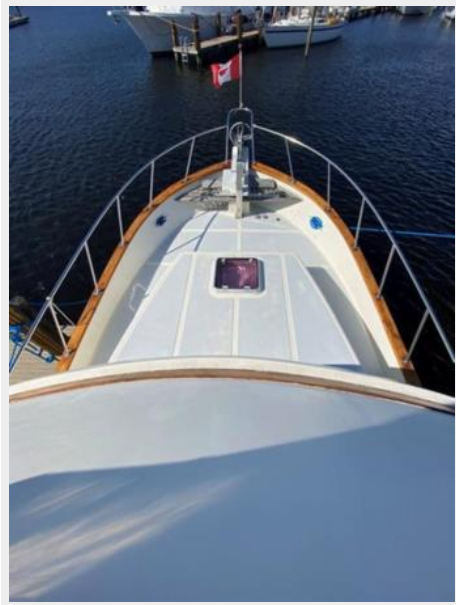
**133 Flybridge Forward**



**134 Flybridge to Port**



**135 Flybridge to Bow**



**136 Chemical Head**



**137 Chemical Head**



**138 Mast**



139 Tender



200 Interior



201 Salon Starboard



202 Salon Port





**203 Salon Aft**



**204 Salon Aft Open Door**



**205 Chart Table**



**206 Int Helm**





**207 Int Helm**



**208 Int Helm**



**209 Int Helm Seat**



**210 Helm Seat Cabinet**



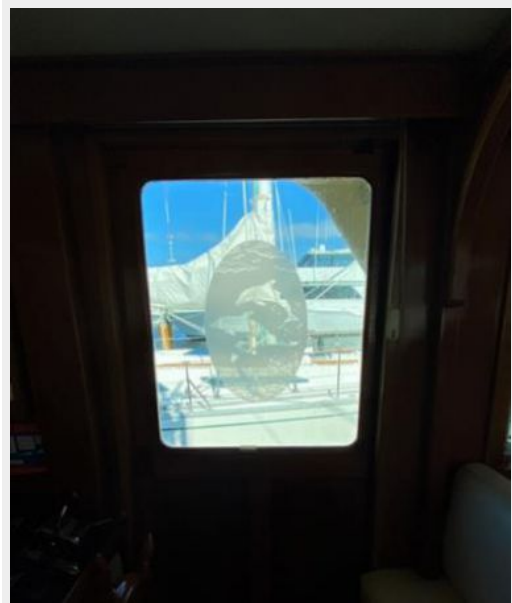
**211 Helm Seat Cabinet**



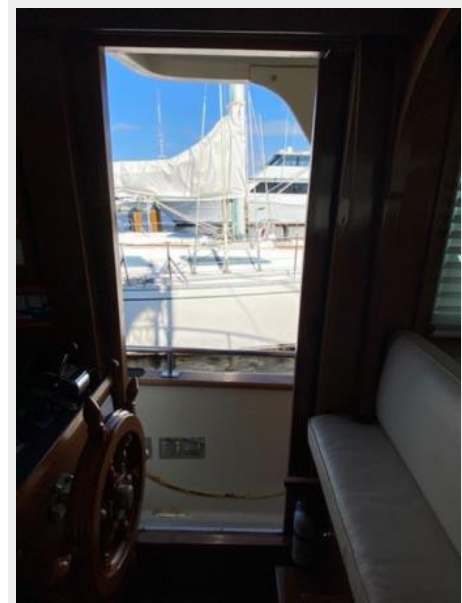
**212 Starboard Door**



**213 Stbd Door Glass**



**214 Stbd Door Open**



214 Wndshield



215 Galley



216 Galley



217 Galley Storage





218 Galley Storage Open



219 Galley Counter Storage



220 Galley Cntr Stor Open



221 RefrigFreezer



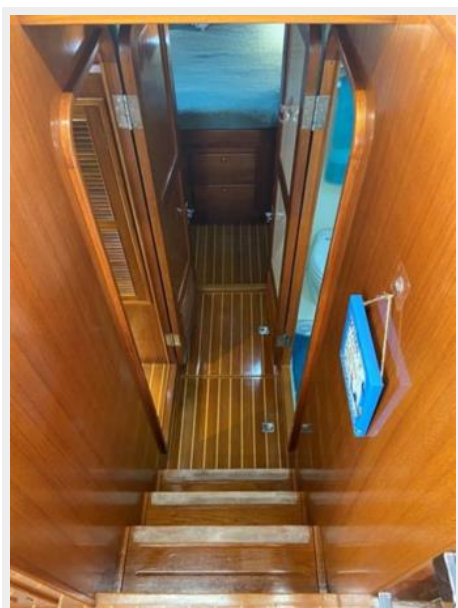
**222 Dinette**



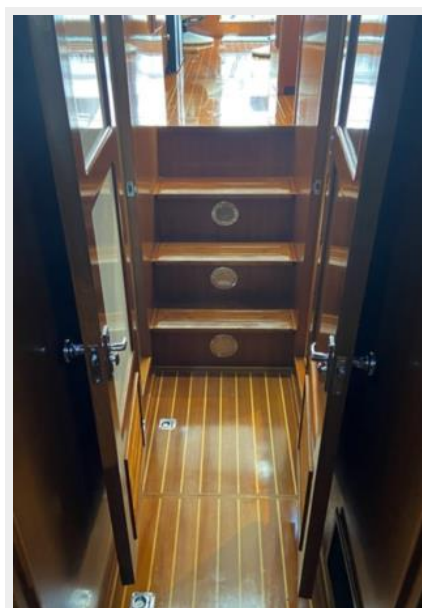
**223 Electric Panel**



**224 Steps Forward**



**225 Steps Aft**



**226 Steps Storage**



**230 Master**



**231 Master Berth**



**232 Master to Stbd**



**233 Master to Port**



**234 Master Forward**





**235 Master Storage**



**236 Master Storage**



**240 Guest Staeroom**



**241 Guest Aft**



**242 Guest Berth**



**243 Guest Locker**



**245 Head**



**246 Head Vanity**





### 247 Head Shower



### 301 IMG\_3522



### 302 IMG\_3523



### 303 IMG\_3525



304 IMG\_3519



310 IMG\_3572



311 IMG\_3573



312 IMG\_3574



313 IMG\_3575



314 IMG\_3576



315 IMG\_3577



316 IMG\_3588





317 IMG\_3592



318 IMG\_3593



319 IMG\_3604



320 IMG\_3501



321 IMG\_3502



322 IMG\_3503



323 IMG\_3504



324 IMG\_3505



325 IMG\_3506



326 IMG\_3507



327 IMG\_3514



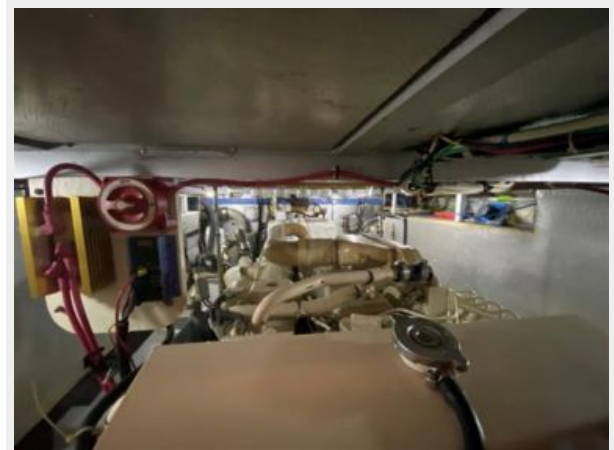
328 IMG\_3513



329 IMG\_3512



330 IMG\_3555





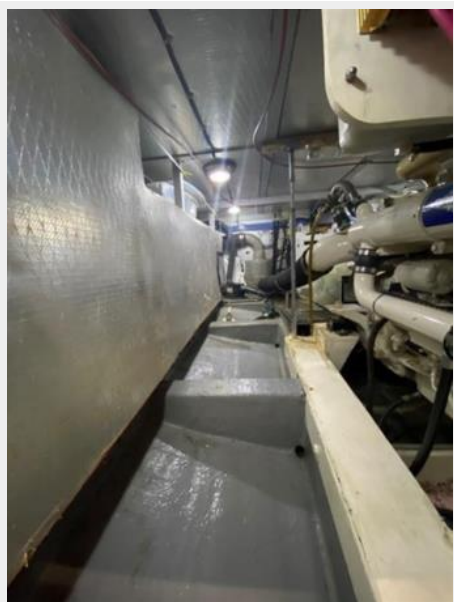
331 IMG\_3560



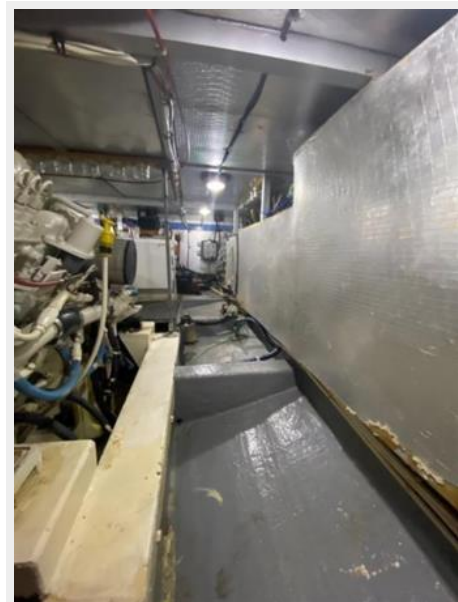
340 IMG\_3553



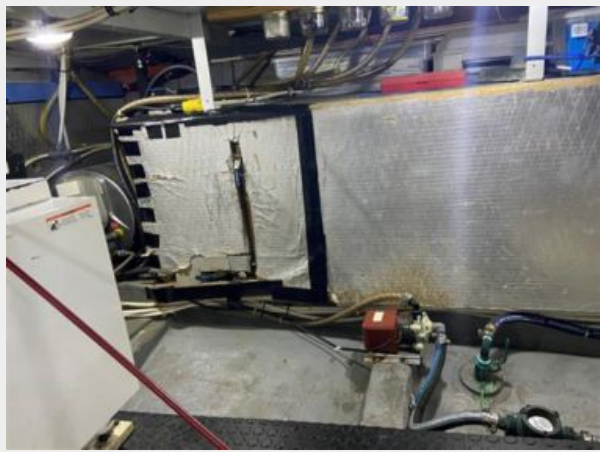
341 IMG\_3554



342 IMG\_3556



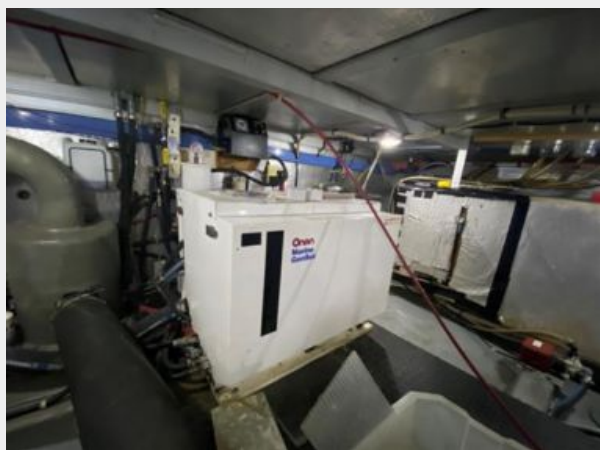
343 IMG\_3558



344 IMG\_3559



350 IMG\_3557



360 IMG\_3495





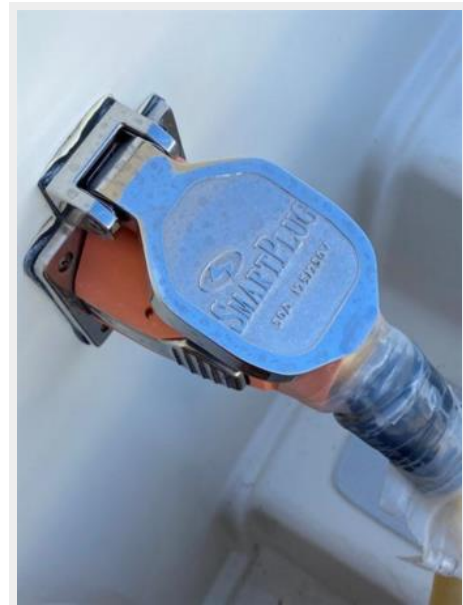
361 IMG\_3518



362 IMG\_3517



364 IMG\_3603



363 IMG\_3524



365 IMG\_3511



370 IMG\_3548



380 IMG\_3596



381 IMG\_3597





382 IMG\_3598



383 IMG\_3600



384 IMG\_3601



385 IMG\_3602



391 IMG\_3584



392 IMG\_3585



393 IMG\_3586



394 IMG\_3589



# КОНТАКТЫ

---

Андрей Шестаков (Andrey Shestakov) – ведущий яхтенный брокер отдела продаж яхт и судов компании Shestakov Yacht Sales Inc. Официальный представитель Shestakov Yacht Sales Inc. для русскоговорящих клиентов в центральном офисе компании в Майами/Форт Лодердейл/Флорида/США.

## Контактная информация

---

Email: [andrey@shestakovyachtsales.com](mailto:andrey@shestakovyachtsales.com)

Web: [shestakovyachtsales.com](http://shestakovyachtsales.com)

## Телефоны

---

Краснодарский край: **+7(918)465-66-44**

США, Майами, Флорида: **+1(954)274-4435**

## Время работы

---

Понедельник – Суббота: **9:00 - 21:00**  
EDT

Воскресенье: **Закрито**

## Адрес

---



Harbour Towne Marina, 850 NE 3rd St,  
STE 213, Dania, FL 33004