

SEA FOX — CARVER



Builder: CARVER

Year Built: 1997

Model: SHELBY

Price: PRICE ON APPLICATION

Location: United States

LOA: 50' 0" (15.24m)

Beam: 15' 1" (4.60m)

Min Draft: 4' 7" (1.40m)

Max Draft: 4' 7" (1.40m)

Cruise Speed: 21 Kts. (24 MPH)

Our experienced yacht broker, Andrey Shestakov, will help you choose and buy a yacht that best suits your needs **Sea Fox — CARVER** from our catalogue. Presently, at Shestakov Yacht Sales Inc., we have a wide variety of yachts available on our sale's list. We also work in close contact with all the big yacht manufacturers from all over the world.

If you would like to buy a yacht **Sea Fox — CARVER** or would like help answering any questions concerning purchasing, selling or chartering a yacht, please call **+1(954)274-4435**

TABLE OF CONTENTS

TABLE OF CONTENTS	2
SPECIFICATIONS	6
Overview	6
Basic Information	6
Dimensions	6
Speed, Capacities and Weight	6
Accommodations	7
Hull and Deck Information	7
Engine Information	7
DETAILED INFORMATION	8
MAIN DESCRIPTION	8
50' CARVER 500 WALK THROUGH	8
50' CARVER 500 FLYBRIDGE	8
50' CARVER 500 SUNDECK	9
50' CARVER 500 COCKPIT	9
50' CARVER 500 GALLEY	9
50' CARVER 500 SALON	9
50' CARVER 500 FORWARD GUEST STATEROOM	9
50' CARVER 500 AFT MASTER STATEROOM	10
50' CARVER 500 ELECTRICAL	10
50' CARVER 500 MECHANICAL EQUIPMENT	10
50' CARVER 500 DECK EQUIPMENT	10
50' CARVER 500 SAFETY EQUIPMENT	10
DISCLAIMER	10
Exclusions	10
Disclaimer	11
PHOTOS	12
1. Carver 500 Starboard Profile	12

2. Carver 500 Port Profile	12
3. Carver 500 Bow Profile	12
4. Carver 500 Starboard View Aft	12
5. Carver 500 Port View Aft	13
6. Carver 500 Aft Profile	13
7. Carver 500 Aft Starboard Profile	13
8. Carver 500 Cockpit	13
10. Carver 500 Custom Hydraulic Davits	14
9. Carver 500 Cockpit 2	14
11. Carver 500 Aft Master Cockpit Entrance	14
12. Carver 500 Flybridge Helm	14
13. Carver 500 Engine Hours	14
15. Carver 500 Bridge View Aft	14
17. Carver 500 Bridge Forward Seating	15
16. Carver 500 Helm Seating	15
18. Carver 500 Sundeck	15
19. Carver 500 Sundeck Seating 2	15
21. Carver 500 Sundeck Wetbar, Access to Bridge & Salon	16
20. Carver 500 Sundeck 3	16
22. Carver 500 Wetbar & 110 Outlet	16
23. Carver 500 Entry To Salon	16
24. Carver 500 Salon Starboard Side	17
25. Carver 500 Salon View Forward	17
26. Carver 500 LVT Sole	17
27. Carver 500 Salon Table & Settee	17
29. Carver 500 Galley 2	18
30. Carver 500 Galley 3	18
31. Carver 500 View Forward To Guest Master	18
32. Carver 500 View Forward To Guest Master	18

33. Carver 500 Guest Master & Overhead Hatch	19
34. Carver 500 Guest Master Head & Tub	19
36. Carver 500 Guest Master View Aft	19
35. Carver 500 Guest Master Tub & Sink	19
37. Carver 500 Aft Master Stateroom Queen Berth	20
38. Carver 500 Aft Master Stateroom Port View	20
40. Carver 500 Aft Master Stateroom View Aft	20
39. Carver 500 Aft Master Stateroom Slider Open To Cockpit	20
42. Carver 500 Aft Master Stateroom To Starboard	21
41. Carver 500 Aft Master Stateroom 2	21
44. Carver 500 Aft Master Stateroom Privacy Door	21
43. Carver 500 Aft Master Vanity	21
45. Carver 500 Aft Master Stateroom Privacy Door To Head	22
46. Carver 500 Aft Master Stateroom Shower	22
48. Carver 500 Aft Master Stateroom View Forward	22
47. Carver 500 Aft Master Stateroom Head	22
49. Carver 500 Washer, Dryer Combo	23
50. Carver 500 DC Control Center	23
51. Carver 500 AC Control Center	23
53. Carver 500 AC Voltage & Power	23
54. Carver 500 Engine Room View Aft	24
55. Carver 500 Starboard Engine	24
56. Carver 500 Port Engine	24
57. Carver 500 Engine Room Aft	24
58. Carver 500 Starboard Shaft	25
59. Carver 500 Port Shaft	25
60. Carver 500 Kohler Generator	25
CONTACTS	26
Contact details	26

Telephones	26
Office hours	26
Address	26

SPECIFICATIONS

Overview

Sea Fox is a fine example of Carver's 500 Series Cockpit Motor Yacht. Both her sundeck and flybridge have hardtops and are open to one another. Winged doors both port & starboard allow access to the bow or to board. Molded steps to the bridge and aft cockpit allow for easy movement. The Cummins 8.3m2 diesel engines with low hours are ready to take you on your next journey. Her large welcoming salon with adjacent galley keep the Chef right in any social gathering. There is plenty of sleep space. The large aft master stateroom has a walk around queen berth with full head and shower. Sliding doors allow access to the cockpit. Forward of the salon is a 2 bunk quarters to port. Directly forward is the Guest stateroom with queen pedestal bed and private head with tub to starboard. Sea Fox has a well thought out layout and will give her new owners much to be proud of. She is competitively priced and will not last long.

Basic Information

Category: SHELBY

Sub Category: Aft Cabin

Model Year: 1997

Year Built: 1997

Country: United States

Dimensions

LOA: 50' 0" (15.24m)

Beam: 15' 1" (4.60m)

Min Draft: 4' 7" (1.40m)

Max Draft: 4' 7" (1.40m)

Speed, Capacities and Weight

Cruise Speed: 21 Kts. (24 MPH)

Water Capacity: 300 Gallons

Holding Tank: 80 Gallons

Fuel Capacity: 640 Gallons

Accommodations

Total Cabins: 4

Total Heads: 2

Hull and Deck Information

Hull Material: Fiberglass

Engine Information

Engines: 2

Manufacturer: Cummins

Model: 6CTA 8.3 M2

Engine Type: Inboard

Fuel Type: Diesel

DETAILED INFORMATION

MAIN DESCRIPTION

Sea Fox is a fine example of Carver's 500 Series Cockpit Motor Yacht. Both her sundeck and flybridge have hardtops and are open to one another. Winged doors both port & starboard allow access to the bow or to board. Molded steps to the bridge and aft cockpit allow for easy movement. The Cummins 8.3m2 diesel engines with low hours are ready to take you on your next journey. Her large welcoming salon with adjacent galley keep the Chef right in any social gathering. There is plenty of sleep space. The large aft master stateroom has a walk around queen berth with full head and shower. Sliding doors allow access to the cockpit. Forward of the salon is a 2 bunk quarters to port. Directly forward is the Guest stateroom with queen pedestal bed and private head with tub to starboard. Sea Fox has a well thought out layout and will give her new owners much to be proud of. She is competitively priced and will not last long.

50' CARVER 500 WALK THROUGH

Boarding Sea Fox can be done via the swim platform and transom door or by port/starboard access wing doors to the sundeck. Comfortable seating along with wetbar, refrigerator and icemaker make this a great entertaining area. One accesses the aft cockpit via 3 molded stairs to port. There are 3 molded steps to starboard leading to the spacious enclosed bridge with new EZTCY glass. The Bridge is designed for comfort and excellent visibility. From the sundeck is access to the salon and lower quarters. One finds an oversized salon with custom LVT decking in an oak/grey color. Large windows allow for plenty of light. The u-shaped galley is immediately to port. The galley is open to the salon where there is a couch/table to port and l-shaped settee to starboard. Across from the galley is a 20" flatscreen t.v. to starboard. Moving forward down 3 stairs one finds a sitting room to port with 2 bunks. Straight ahead is the guest suite with queen pedestal bed hanging lockers and under bed storage. To starboard is a head and bathtub. Moving aft through the salon one finds 3 steps down to access the master stateroom. The washer/dryer combo is located at the bottom of the stairs to starboard. The walk around queen bed is center and faces the aft slider access to the cockpit. A separate head, shower and vanity are to starboard. Open the aft sliders to access the aft cockpit with a new overhead bimini top to shield you from the elements. The large molded swim platform with transom door along with the newly installed hydraulic davit system allow for easy dingy launch and water access.

50' CARVER 500 FLYBRIDGE

The Flybridge on this Carver is extremely comfortable and can handle a small crowd. With newly updated EZTCY glass the view is clear and weather protected. This is a one helm vessel so all navigation and operational equipment is located here to include:- Garmin 1040 xs & 740s with depth finder- I-com M602 VHF radio & Standard Horizon VHF Marine radio- Ray Marine auto pilot- Fusion am/fm radio-2 speakers & GXM 53 SiriusXM radio/weather- Panoptix PS 51-TH

forward looking sonar/depthfinder- Garmin Dome radar- All engine instrumentation, Ritchie compass,courtesy lighting- 2 overhead ceiling hatches,underseat storage

50' CARVER 500 SUNDECK

The sundeck is designed for comfort & function. There is a comfortable wicker seating area along with a wetbar consisting of a Norcold refrigerator,u-line icemaker, sink with Corian counter top, 110 outlet and over head storage. A great feature of this area is its open to the flybridge . There are overhead courtesy lights with 2 Sony speakers. The Sundeck also has winged doors to port and starboard and is entirely enclosed with isinglass. There are also roll down sun shades. Portside molded stairs and glass door allow access to the cockpit.

50' CARVER 500 COCKPIT

The aft cockpit has a new Bimini top for weather protection. There is a custom synthetic teak sole and the following:-50 Amp power connection with retractable 75' of cable- Dockside water connection/port- Hot & cold shower- Master stateroom entry door- Integrated swim platform with transom door.- New hydraulic lift for tender- Courtesy lights- Rod Holders- Molded stairs to sundeck

50' CARVER 500 GALLEY

The U shaped Galley is immediately to port when you enter the salon area.There is plenty of over /under storage along with the following features:- Norcold refrigerator-freezer- Princess 3 burner electric stove top- New Sensor convection microwave- Deep well double sink with Corian counter top & hot/cold water- 12 volt lighting & 2 110 outlets

50' CARVER 500 SALON

The grand salon is open and spacious with plenty of light. The dining area is forward of the galley to port with circular table and comfortable seating. There is also a built in 4 station USB port built in to port side wall. To starboard is an I-shaped couch. The large forward windows and side windows allow for plenty of light. With the Galley open to the salon it allows for the chef to be involved in any gathering. The beautiful LVT flooring gives a cozyfeel to this social space.

50' CARVER 500 FORWARD GUEST STATEROOM

The guest stateroom is located forward with a queen centerline bed with storage underneath. She boasts 2 hanging lockers and drawers,2 fans,2 portholes and 3 110 outlets.There are 2 reading lights along with an overhead hatch and courtesy lighting.To starboard is a head along with shower and tub.to port before the Guest master is a 3rd room to be used a bunk space for

two, office or storage.

50' CARVER 500 AFT MASTER STATEROOM

Moving through the salon to the aft master stateroom one finds a walk around centerline queen bed. The queen faces aft to a glass access door to the cockpit. Two large closets along with four drawers and underbed storage allow for ample storage. To starboard is a well arranged center vanity with a separate shower & head. There are 2 portholes, 2 fans, 2 reading lights, 3 overhead courtesy lights and 2 110 outlets

50' CARVER 500 ELECTRICAL

Following electrical equipment;- Hydraulic Davits new (2017)- All 110 outlets- Maxwell windlass- Central Vacuum- Battery Charger- Splenda Washer/Dryer combo- Central vacuum system

50' CARVER 500 MECHANICAL EQUIPMENT

- Twin Cummins 6CTA 8.3 M2 Diesel engines 420 HP (1568 hrs)- Kohler 8.5 watt generator (1316 hrs)- Shafts/props/cutlass bearings (2017) - Dripless Shafts- 3 Cruise air reverse cycle air conditioner & heat- Racor Fuel filters- Auto oil change system- Vacuflush toilets

50' CARVER 500 DECK EQUIPMENT

- Rockna 33 Anchor with 200 ft chain- Stainless cleats & railings- Fresh water washdown - Transom Door- Molded swim platform/transom door- New cockpit Bimini- Fenders & lines- Flybridge & Sundeck hardtops and enclosures

50' CARVER 500 SAFETY EQUIPMENT

- 3 Bilge pumps- Life Jackets- Halon Fire extinguisher system- High water alarm- Anchor

DISCLAIMER

The Company offers the details of this vessel in good faith but cannot guarantee or warrant the accuracy of this information nor warrant the condition of the vessel. A buyer should instruct his agents, or his surveyors, to investigate such details as the buyer desires validated. This vessel is offered subject to prior sale, price change, or withdrawal without notice.

Exclusions

Owner's personal belongings.

Disclaimer

The Company offers the details of this vessel or yacht in good faith but cannot guarantee or warrant the accuracy of this information nor warrant the condition of the vessel. A buyer should instruct his representatives, agents, or his surveyors, to investigate such details as the buyer desires validated. This vessel or yacht is offered subject to prior sale, price change, or withdrawal without notice.

PHOTOS

1. Carver 500 Starboard Profile



2. Carver 500 Port Profile



3. Carver 500 Bow Profile



4. Carver 500 Starboard View Aft



5.Carver 500 Port View Aft



6.Carver 500 Aft Profile



7.Carver 500 Aft Starboard Profile



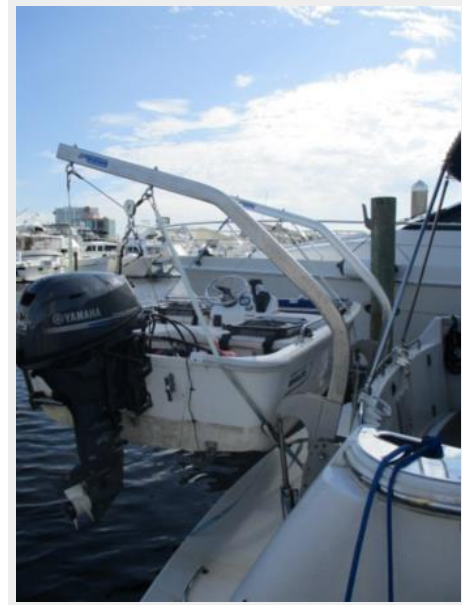
8. Carver 500 Cockpit



9. Carver 500 Cockpit 2



10. Carver 500 Custom Hydraulic Davits



11. Carver 500 Aft Master Cockpit Entrance



12 Carver 500 Flybridge Helm



13 Carver 500 Engine Hours



15. Carver 500 Bridge View Aft



16. Carver 500 Helm Seating



17. Carver 500 Bridge Forward Seating



18. Carver 500 Sundeck



19. Carver 500 Sundeck Seating 2



20. Carver 500 Sundeck 3



21. Carver 500 Sundeck Wetbar, Access to Bridge & Salon



22. Carver 500 Wetbar & 110 Outlet



23. Carver 500 Entry To Salon



24. Carver 500 Salon Starboard Side



25. Carver 500 Salon View Forward



26. Carver 500 LVT Sole



27. Carver 500 Salon Table & Settee



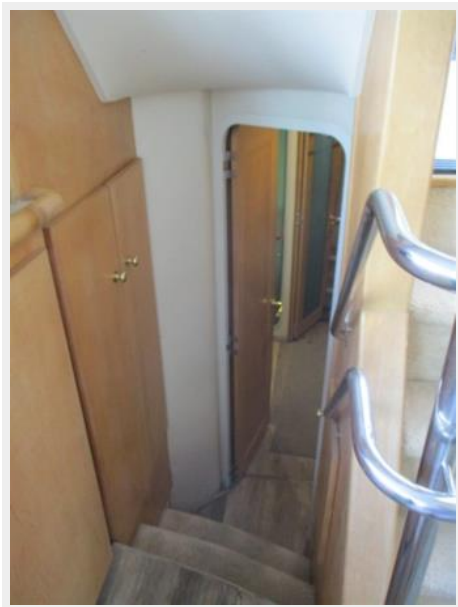
29. Carver 500 Galley 2



30. Carver 500 Galley 3



31. Carver 500 View Forward To Guest Master



32. Carver 500 View Forward To Guest Master



33. Carver 500 Guest Master & Overhead Hatch



34. Carver 500 Guest Master Head & Tub



35. Carver 500 Guest Master Tub & Sink



36. Carver 500 Guest Master View Aft



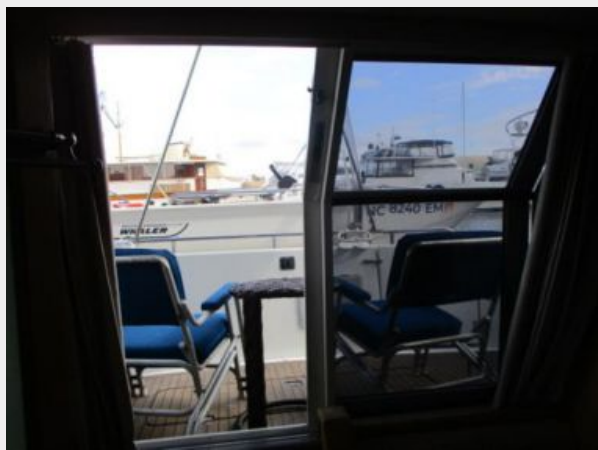
37. Carver 500 Aft Master Stateroom Queen Berth



38. Carver 500 Aft Master Stateroom Port View



39. Carver 500 Aft Master Stateroom Slider Open To Cockpit



40. Carver 500 Aft Master Stateroom View Aft



41. Carver 500 Aft Master Stateroom 2



42. Carver 500 Aft Master Stateroom To Starboard



43. Carver 500 Aft Master Vanity



44. Carver 500 Aft Master Stateroom Privacy Door



45. Carver 500 Aft Master Stateroom Privacy Door To Head



46. Carver 500 Aft Master Stateroom Shower



47. Carver 500 Aft Master Stateroom Head



48. Carver 500 Aft Master Stateroom View Forward



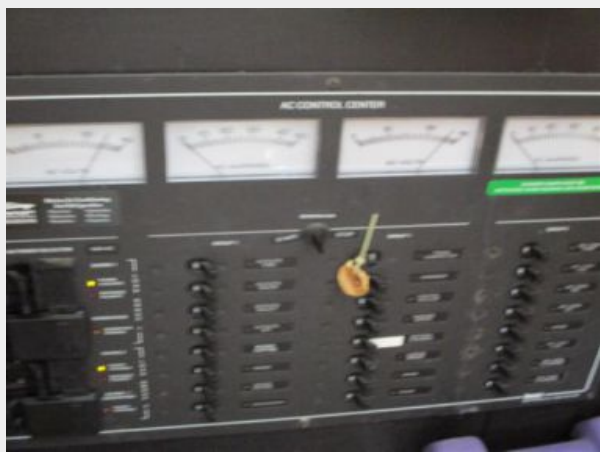
49. Carver 500 Washer, Dryer Combo



50. Carver 500 DC Control Center



51. Carver 500 AC Control Center



53. Carver 500 AC Voltage & Power



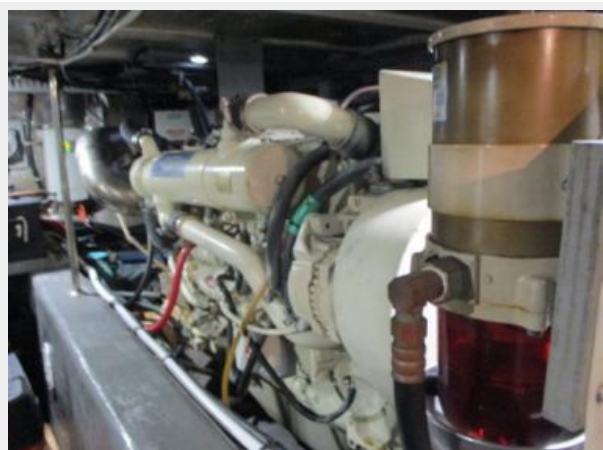
54. Carver 500 Engine Room View Aft



55. Carver 500 Starboard Engine



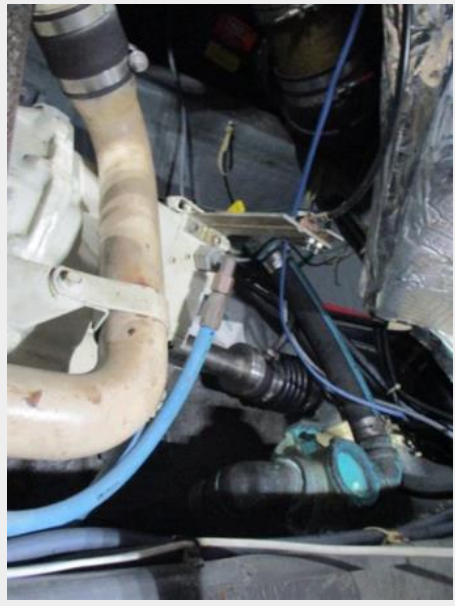
56. Carver 500 Port Engine



57. Carver 500 Engine Room Aft



58. Carver 500 Starboard Shaft



59. Carver 500 Port Shaft



60. Carver 500 Kohler Generator



CONTACTS

Andrey Shestakov, leading yacht broker of the sales department of Shestakov Yacht Sales Inc. Shestakov Yacht Sales Inc., the official representative of the Miami/Fort Lauderdale FL headquarters.

Contact details

Email: andrey@shestakovyachtsales.com

Web: shestakovyachtsales.com/en/

Telephones

USA: +1(954)274-4435

Office hours

Monday – Saturday: **9:00 - 21:00** EDT

Sunday: **closed**

Address



Harbour Towne Marina, 850 NE 3rd St,
STE 213, Dania, FL 33004