

## NO AGENDA — MAINSHIP



**Builder:** MAINSHIP

**Year Built:** 2007

**Model:** Trawler

**Price:** PRICE ON APPLICATION

**Location:** United States

**LOA:** 34' 0" (10.36m)

**Beam:** 12' 3" (3.73m)

**Min Draft:** 0' 0" (0.00m)

**Max Draft:** 3' 3" (0.99m)

Our experienced yacht broker, Andrey Shestakov, will help you choose and buy a yacht that best suits your needs **No Agenda — MAINSHIP** from our catalogue. Presently, at Shestakov Yacht Sales Inc., we have a wide variety of yachts available on our sale's list. We also work in close contact with all the big yacht manufacturers from all over the world.

If you would like to buy a yacht **No Agenda — MAINSHIP** or would like help answering any questions concerning purchasing, selling or chartering a yacht, please call **+1(954)274-4435**

# TABLE OF CONTENTS

|                                    |    |
|------------------------------------|----|
| TABLE OF CONTENTS                  | 2  |
| SPECIFICATIONS                     | 5  |
| Overview                           | 5  |
| Basic Information                  | 5  |
| Dimensions                         | 5  |
| Speed, Capacities and Weight       | 5  |
| Accommodations                     | 5  |
| Hull and Deck Information          | 6  |
| Engine Information                 | 6  |
| DETAILED INFORMATION               | 7  |
| Accommodations                     | 7  |
| Electronics                        | 7  |
| Electrical                         | 8  |
| Deck, Bridge, Cockpit              | 8  |
| Mechanical and Engine Details      | 9  |
| Exclusions                         | 9  |
| Disclaimer                         | 9  |
| PHOTOS                             | 10 |
| 7726288_20210126140141623_1_XLARGE | 10 |
| 7726288_20210126140147681_1_XLARGE | 10 |
| 7726288_20210126140134926_1_XLARGE | 10 |
| 7726288_20210126140129605_1_XLARGE | 10 |
| 7726288_20210126140153450_1_XLARGE | 10 |
| 7726288_20210126140220508_1_XLARGE | 10 |
| 7726288_20210126140158233_1_XLARGE | 11 |
| 7726288_20210126140208317_1_XLARGE | 11 |
| 7726288_20210126140225492_1_XLARGE | 11 |
| 7726288_20210126140203222_1_XLARGE | 11 |

---

|                                    |    |
|------------------------------------|----|
| 7726288_20210126140306935_1_XLARGE | 11 |
| 7726288_20210126140317607_1_XLARGE | 11 |
| 7726288_20210126140236261_1_XLARGE | 12 |
| 7726288_20210126140241391_1_XLARGE | 12 |
| 7726288_20210126140256501_1_XLARGE | 12 |
| 7726288_20210126140246697_1_XLARGE | 12 |
| 7726288_20210126140251582_1_XLARGE | 12 |
| 7726288_20210126140312274_1_XLARGE | 12 |
| 7726288_20210126140358873_1_XLARGE | 13 |
| 7726288_20210126140347451_1_XLARGE | 13 |
| 7726288_20210126140341585_1_XLARGE | 13 |
| 7726288_20210126140336214_1_XLARGE | 13 |
| 7726288_20210126140410337_1_XLARGE | 13 |
| 7726288_20210126140352624_1_XLARGE | 13 |
| 7726288_20210126140331071_1_XLARGE | 14 |
| 7726288_20210126140323413_1_XLARGE | 14 |
| 7726288_20210126140441338_1_XLARGE | 14 |
| 7726288_20210126140433738_1_XLARGE | 14 |
| 7726288_20210126140427248_1_XLARGE | 14 |
| 7726288_20210126140421538_1_XLARGE | 14 |
| 7726288_20210127061313259_1_XLARGE | 15 |
| 7726288_20210126140416055_1_XLARGE | 15 |
| 7726288_20210126140215115_1_XLARGE | 15 |
| 7726288_20210126140452814_1_XLARGE | 15 |
| 7726288_20210126140513143_1_XLARGE | 15 |
| 7726288_20210126140533231_1_XLARGE | 15 |
| 7726288_20210126140523161_1_XLARGE | 16 |
| 7726288_20210126140502772_1_XLARGE | 16 |
| 7726288_20210126140543120_1_XLARGE | 16 |

---

---

|                                    |    |
|------------------------------------|----|
| 7726288_20210126140537895_1_XLARGE | 16 |
| 7726288_20210126140547832_1_XLARGE | 16 |
| CONTACTS                           | 17 |
| Contact details                    | 17 |
| Telephones                         | 17 |
| Office hours                       | 17 |
| Address                            | 17 |

---

# SPECIFICATIONS

---

## Overview

---

Powered by the highly rated 370 Yanmar FWC with 855hrs, NexGen 5kw Generator with sound shield, Factory Big Sliding Helm Windows and Cockpit A/C, Simrad Touchscreen GPS, Compass, VHF 215 with DSC, Bow Thruster, Windlass, Marine Head, Tinted Helm Windows. This is a 34' vessel with the amenities of a 40' vessel. In my 35 years in the business you will not find a nicer 34 Mainship Pilot Sedan, She Looks New.

## Basic Information

---

**Category:** Trawler

**Sub Category:** Sedan

**Model Year:** 2007

**Year Built:** 2007

**Country:** United States

**Cockpit:** Yes

## Dimensions

---

**LOA:** 34' 0" (10.36m)

**Beam:** 12' 3" (3.73m)

**Min Draft:** 0' 0" (0.00m)

**Max Draft:** 3' 3" (0.99m)

**Clearance:** 10' 0" (3.05m)

## Speed, Capacities and Weight

---

**Displacement:** 16000 Pounds

**Water Capacity:** 70 Gallons

**Holding Tank:** 20 Gallons

**Fuel Capacity:** 250 Gallons

## Accommodations

---

**Total Cabins:** 1

---

## Hull and Deck Information

---

**Hull Material:** Fiberglass

## Engine Information

---

**Engines:** 1

**Manufacturer:** Yanmar

**Model:** 6LY-STP

**Engine Type:** Inboard

**Fuel Type:** Diesel

---

# DETAILED INFORMATION

---

## Accommodations

---

### Main Cabin

- Cherry Interior
- Convertible Dinette to Double Berth
- Everware Teak and Holly Flooring
- Interior Lighting
- U-Shaped Dinette with Blue velour upholstery
- Opening Stainless Steel Hatches with Screens
- (6) Opening, Stainless Steel Portlights
- Flat Screen TV

### Forward Cabin

- (2) Cedar-Lined Hanging Lockers
- (2) High Intensity Reading Lights
- Opening Stainless Steel Hatch with Screen
- Storage Under Berths
- V-Berth With Filler Cushion

### Head

- Built-in Vanity with Corian Counter
- Electric Head with Holding Tank
- Mirror
- Molded Fiberglass Head
- Power Ventilator
- Shower Hot & Cold
- Shower Sump Pump
- Waste Tank Monitor
- Macerator has been removed

---

## Electronics

---

- Simrad GPS/Chart/Radar/Fish Finder Touchscreen Multifunction Display
- Raymarine 215 Marine VHF Radio
- Danforth Flush Mounted Lighted Compass
- Bow Thruster with Joystick Control

---

## Electrical

---

- 5kw NexGen Generator
- ProNautic 12-50P Battery Charger
- Battery Saftey Switch
- Bonding System with Zinc Anode
- Circuit Breakers
- Color Coded Wiring Harness
- (3) Electric Bilge Pumps with Auto Switch
- Electical Distribution Panel
- GFCI Protection Throughout
- High Water Bilge Alarm
- Interior Lights
- Reverse Polarity Indicator
- TV Antenna
- TV/Telephone Dockside Connection
- Water Heater
- Water Tank Monitor
- 50ft 30amp Shore Power Cord

---

## Deck, Bridge, Cockpit

---

- Anchor Locker
- Bow Rail - Custom Stainless Steel
- Bridge Seating For 6 with Storage Underneath
- Cleats - Bow, Stern & Spring
- Cockpit Storage
- Cockpit Stereo
- Swim Platform with Ladder
- Windlass with Deck and Helm Controls
- Chain & Line Rode with Danforth Anchor
- Courtesy Lights - Cockpit & Bridge Deck
- Dockside Water Connection
- Morse Controls - Throttle & Shift
- Engine Hour Meter
- Fully Enclosed Hardtop with Overhead Lighting, Sliding Side Windows & Aft Isinglass Enclosure
- Engine Instrumentation
- Fiberglass Anchor Pulpit with Roller
- High Density Rub Rail with Stainless Steel Insert
- Insulated Ready Box/Cooler
- Safety Rails - Stainless Steel
- Sliding Companionway Door



- (2) Stereo Speakers
- Venting Windshield with Wipers

---

## Mechanical and Engine Details

---

- 4 Blade Hi-Torque Propeller
- Side Power Bow Thruster
- Cabin Air Conditioning with Heat
- Cockpit Air Conditioning with Heat
- Dripless Shaft Log
- Oil X-Change-R System
- Bronze Struts & Rudders
- Engine Alarm System
- Fire Extinguisher System
- Freshwater Cooling on Engine
- Fuel Filter
- Full Keel & Sand Shoe with Full Prop Protection
- Hot & Cold Pressurized
- Hydraulic Steering
- Internal Sea Strainers
- Seacocks on Underwater Thru-Hull Fittings
- Aquamet Stainless Steel Shaft
- Bennett Trim Tabs
- Welded Aluminum Fuel Tanks

---

## Exclusions

---

Owner's personal belongings.

---

## Disclaimer

---

The Company offers the details of this vessel or yacht in good faith but cannot guarantee or warrant the accuracy of this information nor warrant the condition of the vessel. A buyer should instruct his representatives, agents, or his surveyors, to investigate such details as the buyer desires validated. This vessel or yacht is offered subject to prior sale, price change, or withdrawal without notice.

# PHOTOS

7726288\_20210126140141623\_1\_XLARGE



7726288\_20210126140147681\_1\_XLARGE



7726288\_20210126140134926\_1\_XLARGE



7726288\_20210126140129605\_1\_XLARGE



7726288\_20210126140153450\_1\_XLARGE



7726288\_20210126140220508\_1\_XLARGE



7726288\_20210126140158233\_1\_XLARGE



7726288\_20210126140208317\_1\_XLARGE



7726288\_20210126140225492\_1\_XLARGE



7726288\_20210126140203222\_1\_XLARGE



7726288\_20210126140306935\_1\_XLARGE



7726288\_20210126140317607\_1\_XLARGE



7726288\_20210126140236261\_1\_XLARGE



7726288\_20210126140241391\_1\_XLARGE



7726288\_20210126140256501\_1\_XLARGE



7726288\_20210126140246697\_1\_XLARGE



7726288\_20210126140251582\_1\_XLARGE



7726288\_20210126140312274\_1\_XLARGE



7726288\_20210126140358873\_1\_XLARGE



7726288\_20210126140347451\_1\_XLARGE



7726288\_20210126140341585\_1\_XLARGE



7726288\_20210126140336214\_1\_XLARGE



7726288\_20210126140410337\_1\_XLARGE



7726288\_20210126140352624\_1\_XLARGE



7726288\_20210126140331071\_1\_XLARGE



7726288\_20210126140323413\_1\_XLARGE



7726288\_20210126140441338\_1\_XLARGE



7726288\_20210126140433738\_1\_XLARGE



7726288\_20210126140427248\_1\_XLARGE

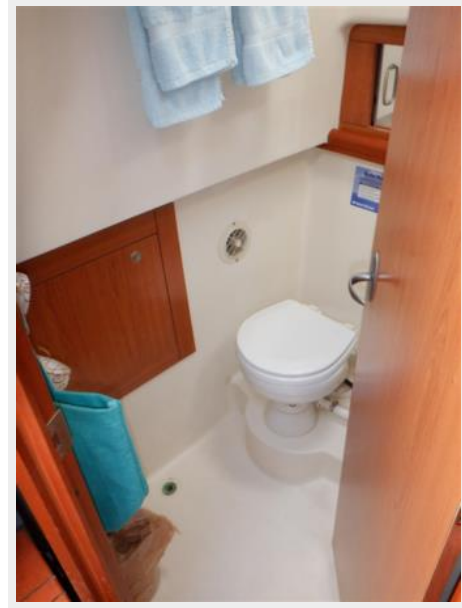


7726288\_20210126140421538\_1\_XLARGE



7726288\_20210127061313259\_1\_XLARGE

7726288\_20210126140416055\_1\_XLARGE



7726288\_20210126140215115\_1\_XLARGE

7726288\_20210126140452814\_1\_XLARGE



7726288\_20210126140513143\_1\_XLARGE

7726288\_20210126140533231\_1\_XLARGE



7726288\_20210126140523161\_1\_XLARGE



7726288\_20210126140502772\_1\_XLARGE



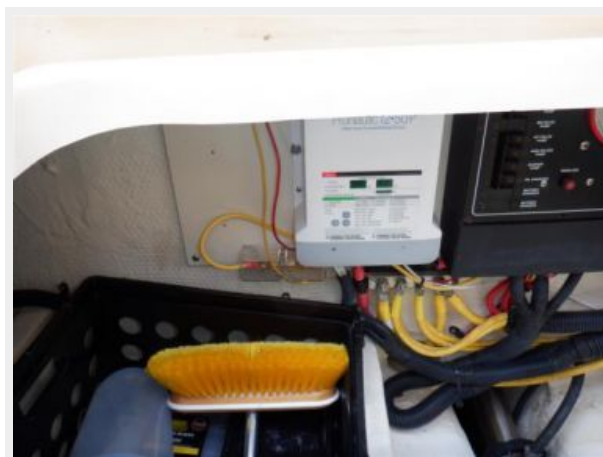
7726288\_20210126140543120\_1\_XLARGE



7726288\_20210126140537895\_1\_XLARGE



7726288\_20210126140547832\_1\_XLARGE





---

# CONTACTS

---

Andrey Shestakov, leading yacht broker of the sales department of Shestakov Yacht Sales Inc. Shestakov Yacht Sales Inc., the official representative of the Miami/Fort Lauderdale FL headquarters.

---

## Contact details

---

Email: [andrey@shestakovyachtsales.com](mailto:andrey@shestakovyachtsales.com)

Web: [shestakovyachtsales.com/en/](http://shestakovyachtsales.com/en/)

---

## Telephones

---

USA: +1(954)274-4435

---

## Office hours

---

Monday – Saturday: **9:00 - 21:00** EDT

Sunday: **closed**

---

## Address

---



Harbour Towne Marina, 850 NE 3rd St,  
STE 213, Dania, FL 33004