

BORN TO RUN — SUNSEEKER



Builder: SUNSEEKER

Year Built: 2014

Model: Motor Yacht

Price: PRICE ON APPLICATION

Location: United States

LOA: 73' 0" (22.25m)

Beam: 18' 10" (5.74m)

Max Draft: 5' 4" (1.63m)

Cruise Speed: 25 Kts. (29 MPH)

Max Speed: 34 Kts. (39 MPH)

Our experienced yacht broker, Andrey Shestakov, will help you choose and buy a yacht that best suits your needs **Born To Run — SUNSEEKER** from our catalogue. Presently, at Shestakov Yacht Sales Inc., we have a wide variety of yachts available on our sale's list. We also work in close contact with all the big yacht manufacturers from all over the world.

If you would like to buy a yacht **Born To Run — SUNSEEKER** or would like help answering any questions concerning purchasing, selling or chartering a yacht, please call **+1(954)274-4435**

TABLE OF CONTENTS

TABLE OF CONTENTS	2
SPECIFICATIONS	5
Overview	5
Basic Information	5
Dimensions	5
Speed, Capacities and Weight	5
Accommodations	5
Hull and Deck Information	5
Engine Information	6
DETAILED INFORMATION	7
Aft Deck	7
Salon and Dining	7
Galley	7
Accommodations	8
Main Helm Console	9
Flybridge	9
Deck	10
Mechanical	10
Electrical	11
Construction	11
Disclaimer	11
Exclusions	11
Disclaimer	11
PHOTOS	12
2_2014 73ft Sunseeker Manhattan BORN TO RUN	12
3_2014 73ft Sunseeker Manhattan BORN TO RUN	12
4_2014 73ft Sunseeker Manhattan BORN TO RUN	12
5_2014 73ft Sunseeker Manhattan BORN TO RUN	12

6_2014 73ft Sunseeker Manhattan BORN TO RUN	13
7_2014 73ft Sunseeker Manhattan BORN TO RUN	13
8_2014 73ft Sunseeker Manhattan BORN TO RUN	13
9_2014 73ft Sunseeker Manhattan BORN TO RUN	13
10_2014 73ft Sunseeker Manhattan BORN TO RUN	14
11_2014 73ft Sunseeker Manhattan BORN TO RUN	14
12_2014 73ft Sunseeker Manhattan BORN TO RUN	14
13_2014 73ft Sunseeker Manhattan BORN TO RUN	14
15_2014 73ft Sunseeker Manhattan BORN TO RUN	14
14_2014 73ft Sunseeker Manhattan BORN TO RUN	14
16_2014 73ft Sunseeker Manhattan BORN TO RUN	15
17_2014 73ft Sunseeker Manhattan BORN TO RUN	15
18_2014 73ft Sunseeker Manhattan BORN TO RUN	15
19_2014 73ft Sunseeker Manhattan BORN TO RUN	15
20_2014 73ft Sunseeker Manhattan BORN TO RUN	15
21_2014 73ft Sunseeker Manhattan BORN TO RUN	15
22_2014 73ft Sunseeker Manhattan BORN TO RUN	16
23_2014 73ft Sunseeker Manhattan BORN TO RUN	16
24_2014 73ft Sunseeker Manhattan BORN TO RUN	16
25_2014 73ft Sunseeker Manhattan BORN TO RUN	16
26_2014 73ft Sunseeker Manhattan BORN TO RUN	16
27_2014 73ft Sunseeker Manhattan BORN TO RUN	16
28_2014 73ft Sunseeker Manhattan BORN TO RUN	17
29_2014 73ft Sunseeker Manhattan BORN TO RUN	17
30_2014 73ft Sunseeker Manhattan BORN TO RUN	17
31_2014 73ft Sunseeker Manhattan BORN TO RUN	17
32_2014 73ft Sunseeker Manhattan BORN TO RUN	17
33_2014 73ft Sunseeker Manhattan BORN TO RUN	17
34_2014 73ft Sunseeker Manhattan BORN TO RUN	18

35_2014 73ft Sunseeker Manhattan BORN TO RUN	18
36_2014 73ft Sunseeker Manhattan BORN TO RUN	18
37_2014 73ft Sunseeker Manhattan BORN TO RUN	18
38_2014 73ft Sunseeker Manhattan BORN TO RUN	19
39_2014 73ft Sunseeker Manhattan BORN TO RUN	19
40_2014 73ft Sunseeker Manhattan BORN TO RUN	19
CONTACTS	20
Contact details	20
Telephones	20
Office hours	20
Address	20

SPECIFICATIONS

Overview

Sophisticated styling, Ready to cruise. Comfortable accommodations for up to 8 with 4 cabin, 3 head layout plus crew quarters aft. American Black Walnut interior and twin MAN V12's @1400 hp each.

Basic Information

Category: Motor Yacht	Model Year: 2014
Year Built: 2014	Country: United States

Dimensions

LOA: 73' 0" (22.25m)	Beam: 18' 10" (5.74m)
Max Draft: 5' 4" (1.63m)	

Speed, Capacities and Weight

Cruise Speed: 25 Kts. (29 MPH)	Max Speed: 34 Kts. (39 MPH)
Displacement: 98780 Pounds	Water Capacity: 317 Gallons
Holding Tank: 49 Gallons	Fuel Capacity: 1321 Gallons

Accommodations

Total Cabins: 4	Total Heads: 3
-----------------	----------------

Hull and Deck Information

Hull Material: Fiberglass

Engine Information

Engines: 2

Manufacturer: MAN

Model: V12

Engine Type: Inboard

Fuel Type: Diesel

DETAILED INFORMATION

Aft Deck

- Teak deck
- Molded staircase to fly bridge
- Besenzoni passerelle
- Bar with ice maker and cool box
- Settee w/storage below
- Hi gloss finished teak table on stainless steel pedestal
- Stern safety gates
- Engine room access hatch
- 2 x 24v stern capstan winches
- Storage lockers
- Bose cockpit speakers
- 24v Overhead lights
- 24v Low-level courtesy lights

Salon and Dining

Salon

- Flush stainless steel glazed sliding door to aft cockpit
- American Black Walnut interior
- Tropic Spec Air conditioning
- 55" Samsung TV
- Bose Lifestyle V35 surround sound system
- Samsung Blu-Ray & Bose Ipod dock
- Large U-Settee & coffee table (P)
- Sofa (S)
- 24v Halogen overhead lighting

Dining

- Dining area w/formal dining for 8
- 8 x Dinnerware & Cutlery
- Uline wine cooler
- Access stairs to the lower deck

Galley

- On Deck

- American Black Walnut cabinetry w/granite countertops
- Refrigerator/freezer
- 4-burner ceramic cooktop
- Microwave oven
- Stainless steel sink
- Hand-held fire extinguisher
- Dishwasher
- First aid kit

Accommodations

MASTER STATEROOM

- Full beam, amidship
- Queen berth w/storage below
- Windows w/opening portholes
- 2 x Night Stands
- Settee
- Vanity w/mirror and stool
- Large walk-in closet
- Drawer storage
- Halogen overhead lights 24vDC
- 32" TV
- Radio/CD/DVD player
- Harmon Kardon sound system
- Air conditioning
- En suite head w/shower

VIP

- Centerline double berth w/storage below
- Hanging locker
- Cabinet & drawer storage
- TV/DVD/stereo
- Harmon Kardon sound system
- Overhead lighting
- Opening portholes
- En Suite head w/shower

GUEST STATEROOM

- Double berth Athwartship w/storage below
- Hanging locker
- TV/DVD/stereo

- Fusion sound system
- Opening porthole
- Head w/shower shared w/2nd guest cabin

GUEST STATEROOM

- Twin berths w/storage below
- Hanging locker
- TV/DVD/stereo
- Fusion sound system
- Opening porthole
- Night stand
- Shared head w/shower

2 Berth Crew accommodations w/head & shower aft

Miele washer and dryer in Crew quarters

Main Helm Console

- Helm console and helm seats (S)
- Observation settee(P)
- Hydraulic power steering
- Raymarine radar/chart plotter with GPS (MH & FB)
- Raymarine autopilot (MH & FB)
- Analog & digital engine instrumentation (MH & FB)
- Raymarine speed and depth sounder & repeater on FB
- Raymarine Night Vision System (MH & FB)
- Rudder indicator
- Fresh water gauge and fuel gauge
- VHF radio with DSC
- Trim tab controls
- Compass
- Horn
- Door to side deck

Flybridge

- Helm Station w/full electronics
- 2 x Helm chairs
- Raymarine color radar/chartplotter/GPS repeater
- Hardtop w/retractable canopy
- Teak Deck

- 2 x U-Settees, one w/folding teak table on SS pedestal
- Wet bar w/icemaker, refrigerator and electric grill
- Bose sound system
- Sunpad forward of helm

Deck

- Fittings all in stainless steel
- Besenzoni hydraulic stainless steel and teak passerelle
- Hydraulic lift platform w/wireless remote control for Tender
- Tender chocks on swim platform
- 4 x Aqualuma underwater lights
- LED side deck lights
- 8 stainless steel deck cleats plus oval mooring cleats
- Teak Decking: Swim platform, aft deck, fly bridge, side decks and fore deck
- Stainless steel bow roller with anchor stop
- Stainless steel bow plate
- Delta anchor and galvanized chain
- 24v bow winch and capstan w/deck, cockpit and fly bridge controls
- Chain locker
- 24v Spotlight
- Fore deck storage lockers
- Fore deck seating and sun pads w/folding back rests
- Fresh water wash down system fore and aft
- Covers for fly bridge seats and wet bar

Mechanical

- Twin MAN V12's @ 1400 hp each
- Sleipner hydraulic fin stabilization system
- Sleipner hydraulic bow & stern thrusters
- Wiring and plumbing for watermaker
- Separate fuel filters/water separators
- Automatic fire extinguishers
- Engine room and forward bilge flood alarms
- Automatic bilge pumps
- Automatic flood pumps
- 4 x 24v Exhaust fans
- Manual bilge pump
- Tropical spec air-conditioning

Electrical

- 2 x 27kW Onan generators w/sound shields
- 2 x Shore power dockside connections
- Galvanic isolator
- 24v & 12v electrical system
- 8 x 24v engine batteries
- 8 x 24v domestic batteries
- 4 x 12v generator batteries
- 24v & 12v Battery charger
- Water heater

Construction

- Built to US Coast Guard Regulations & USA specs
- Hand-laid GRP
- Gel coat including stripes
- Vinylester skin coat with powderbound mat
- Stitched multi-axial reinforced single-skin bottom
- Balsa-cored hull topsides
- Cored deck and superstructure
- Hull stiffened with longitudinal stringers supported by transverse bulkheads and floors

Disclaimer

The Company offers the details of this vessel in good faith but cannot guarantee or warrant the accuracy of this information nor warrant the condition of the vessel. A buyer should instruct his agents, or his surveyors, to investigate such details as the buyer desires validated. This vessel is offered subject to prior sale, price change, or withdrawal without notice.

Exclusions

Owner's personal belongings.

Disclaimer

The Company offers the details of this vessel or yacht in good faith but cannot guarantee or warrant the accuracy of this information nor warrant the condition of the vessel. A buyer should instruct his representatives, agents, or his surveyors, to investigate such details as the buyer desires validated. This vessel or yacht is offered subject to prior sale, price change, or withdrawal without notice.

PHOTOS

2_2014 73ft Sunseeker Manhattan BORN TO RUN



4_2014 73ft Sunseeker Manhattan BORN TO RUN



6_2014 73ft Sunseeker Manhattan BORN TO RUN



8_2014 73ft Sunseeker Manhattan BORN TO RUN



10_2014 73ft Sunseeker Manhattan BORN TO RUN



11_2014 73ft Sunseeker Manhattan BORN TO RUN



12_2014 73ft Sunseeker Manhattan BORN TO RUN



13_2014 73ft Sunseeker Manhattan BORN TO RUN



14_2014 73ft Sunseeker Manhattan BORN TO RUN



15_2014 73ft Sunseeker Manhattan BORN TO RUN



16_2014 73ft Sunseeker Manhattan BORN TO RUN



17_2014 73ft Sunseeker Manhattan BORN TO RUN



18_2014 73ft Sunseeker Manhattan BORN TO RUN



19_2014 73ft Sunseeker Manhattan BORN TO RUN



20_2014 73ft Sunseeker Manhattan BORN TO RUN



21_2014 73ft Sunseeker Manhattan BORN TO RUN



22_2014 73ft Sunseeker Manhattan BORN TO RUN



23_2014 73ft Sunseeker Manhattan BORN TO RUN



24_2014 73ft Sunseeker Manhattan BORN TO RUN



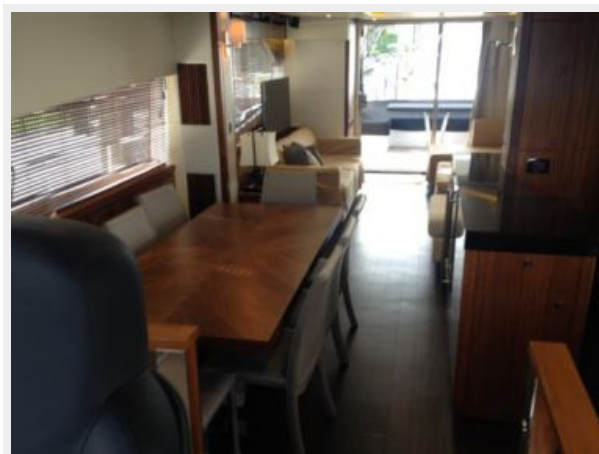
25_2014 73ft Sunseeker Manhattan BORN TO RUN



26_2014 73ft Sunseeker Manhattan BORN TO RUN



27_2014 73ft Sunseeker Manhattan BORN TO RUN



28_2014 73ft Sunseeker Manhattan BORN TO RUN



29_2014 73ft Sunseeker Manhattan BORN TO RUN



30_2014 73ft Sunseeker Manhattan BORN TO RUN



31_2014 73ft Sunseeker Manhattan BORN TO RUN



32_2014 73ft Sunseeker Manhattan BORN TO RUN



33_2014 73ft Sunseeker Manhattan BORN TO RUN



**34_2014 73ft Sunseeker Manhattan BORN
TO RUN**



**35_2014 73ft Sunseeker Manhattan BORN
TO RUN**



**36_2014 73ft Sunseeker Manhattan BORN
TO RUN**



**37_2014 73ft Sunseeker Manhattan BORN
TO RUN**



38_2014 73ft Sunseeker Manhattan BORN TO RUN



39_2014 73ft Sunseeker Manhattan BORN TO RUN



40_2014 73ft Sunseeker Manhattan BORN TO RUN



CONTACTS

Andrey Shestakov, leading yacht broker of the sales department of Shestakov Yacht Sales Inc. Shestakov Yacht Sales Inc., the official representative of the Miami/Fort Lauderdale FL headquarters.

Contact details

Email:
andrey@shestakovyachtsales.com

Web: shestakovyachtsales.com/en/

Telephones

USA: **+1(954)274-4435**

Office hours

Monday – Saturday: **9:00 - 21:00 EDT**

Sunday: **closed**

Address



Harbour Towne Marina, 850 NE 3rd St,
STE 213, Dania, FL 33004