

BORN TO RUN — SUNSEEKER



Судостроитель: SUNSEEKER

Год постройки: 2014

Модель: Моторная яхта

Цена: **ЦЕНА ЯХТЫ ПО ЗАПРОСУ**

Местонахождение: United States

Длина общая: 73' 0" (22.25m)

Ширина: 18' 10" (5.74m)

Макс. осадка: 5' 4" (1.63m)

Крейс. скорость: 25 Kts. (29 MPH)

Макс. скорость: 34 Kts. (39 MPH)

Купить **Born To Run — SUNSEEKER** а также выбрать подходящую вам яхту из нашего каталога яхт вам поможет опытный яхтенный брокер Андрей Шестаков. На сегодняшний день компания **Shestakov Yacht Sales Inc.** имеет большое количество яхт в собственном списке продаж, а также тесно сотрудничает со всеми крупными яхтенными производителями по всему миру.

Для того чтобы купить яхту **Born To Run — SUNSEEKER** а также проконсультироваться по любому вопросу связанному с покупкой, продажей, чартером яхт позвоните по телефону **+7(918)465-66-44**.

ОГЛАВЛЕНИЕ

ОГЛАВЛЕНИЕ	2
ХАРАКТЕРИСТИКИ	5
Обзор	5
Основная информация	5
Размеры	5
Скорость, вместимость и масса	5
Размещение	5
Корпус и палуба	5
Информация о двигателе	6
ПОДРОБНОЕ ОПИСАНИЕ	7
Aft Deck	7
Salon and Dining	7
Galley	7
Accommodations	8
Main Helm Console	9
Flybridge	9
Deck	10
Mechanical	10
Electrical	11
Construction	11
Disclaimer	11
Исключения	11
Отказ от ответственности	11
ФОТОГРАФИИ	13
2_2014 73ft Sunseeker Manhattan BORN TO RUN	13
3_2014 73ft Sunseeker Manhattan BORN TO RUN	13
4_2014 73ft Sunseeker Manhattan BORN TO RUN	13
5_2014 73ft Sunseeker Manhattan BORN TO RUN	13

6_2014 73ft Sunseeker Manhattan BORN TO RUN	14
7_2014 73ft Sunseeker Manhattan BORN TO RUN	14
8_2014 73ft Sunseeker Manhattan BORN TO RUN	14
9_2014 73ft Sunseeker Manhattan BORN TO RUN	14
10_2014 73ft Sunseeker Manhattan BORN TO RUN	15
11_2014 73ft Sunseeker Manhattan BORN TO RUN	15
12_2014 73ft Sunseeker Manhattan BORN TO RUN	15
13_2014 73ft Sunseeker Manhattan BORN TO RUN	15
15_2014 73ft Sunseeker Manhattan BORN TO RUN	15
14_2014 73ft Sunseeker Manhattan BORN TO RUN	15
16_2014 73ft Sunseeker Manhattan BORN TO RUN	16
17_2014 73ft Sunseeker Manhattan BORN TO RUN	16
18_2014 73ft Sunseeker Manhattan BORN TO RUN	16
19_2014 73ft Sunseeker Manhattan BORN TO RUN	16
20_2014 73ft Sunseeker Manhattan BORN TO RUN	16
21_2014 73ft Sunseeker Manhattan BORN TO RUN	16
22_2014 73ft Sunseeker Manhattan BORN TO RUN	17
23_2014 73ft Sunseeker Manhattan BORN TO RUN	17
24_2014 73ft Sunseeker Manhattan BORN TO RUN	17
25_2014 73ft Sunseeker Manhattan BORN TO RUN	17
26_2014 73ft Sunseeker Manhattan BORN TO RUN	17
27_2014 73ft Sunseeker Manhattan BORN TO RUN	17
28_2014 73ft Sunseeker Manhattan BORN TO RUN	18
29_2014 73ft Sunseeker Manhattan BORN TO RUN	18
30_2014 73ft Sunseeker Manhattan BORN TO RUN	18
31_2014 73ft Sunseeker Manhattan BORN TO RUN	18
32_2014 73ft Sunseeker Manhattan BORN TO RUN	18
33_2014 73ft Sunseeker Manhattan BORN TO RUN	18
34_2014 73ft Sunseeker Manhattan BORN TO RUN	19

35_2014 73ft Sunseeker Manhattan BORN TO RUN	19
36_2014 73ft Sunseeker Manhattan BORN TO RUN	19
37_2014 73ft Sunseeker Manhattan BORN TO RUN	19
38_2014 73ft Sunseeker Manhattan BORN TO RUN	20
39_2014 73ft Sunseeker Manhattan BORN TO RUN	20
40_2014 73ft Sunseeker Manhattan BORN TO RUN	20
КОНТАКТЫ	21
Контактная информация	21
Телефоны	21
Время работы	21
Адрес	21

ХАРАКТЕРИСТИКИ

Обзор

Sophisticated styling, Ready to cruise. Comfortable accommodations for up to 8 with 4 cabin, 3 head layout plus crew quarters aft. American Black Walnut interior and twin MAN V12's @1400 hp each.

Основная информация

Тип судна: Моторная яхта

Модельный год: 2014

Год постройки: 2014

Страна: United States

Размеры

Длина общая: 73' 0" (22.25m)

Ширина: 18' 10" (5.74m)

Макс. осадка: 5' 4" (1.63m)

Скорость, вместимость и масса

Крейс. скорость: 25 Kts. (29 MPH)

Макс. скорость: 34 Kts. (39 MPH)

Водоизмещение: 98780 Pounds

Вместимость воды: 317 Gallons

Вместимость сточного бака: 49 Gallons

Объем топливного бака: 1321 Gallons

Размещение

Всего кают: 4

Всего ком. состава: 3

Корпус и палуба

Материал корпуса: Fiberglass

Информация о двигателе

Двигатели: 2

Производитель: MAN

Модель: V12

Тип двигателя: Inboard

Тип топлива: Diesel

ПОДРОБНОЕ ОПИСАНИЕ

Aft Deck

- Teak deck
- Molded staircase to fly bridge
- Besenzoni passerelle
- Bar with ice maker and cool box
- Settee w/storage below
- Hi gloss finished teak table on stainless steel pedestal
- Stern safety gates
- Engine room access hatch
- 2 x 24v stern capstan winches
- Storage lockers
- Bose cockpit speakers
- 24v Overhead lights
- 24v Low-level courtesy lights

Salon and Dining

Salon

- Flush stainless steel glazed sliding door to aft cockpit
- American Black Walnut interior
- Tropic Spec Air conditioning
- 55" Samsung TV
- Bose Lifestyle V35 surround sound system
- Samsung Blu-Ray & Bose Ipod dock
- Large U-Settee & coffee table (P)
- Sofa (S)
- 24v Halogen overhead lighting

Dining

- Dining area w/formal dining for 8
- 8 x Dinnerware & Cutlery
- Uline wine cooler
- Access stairs to the lower deck

Galley

- On Deck

- American Black Walnut cabinetry w/granite countertops
- Refrigerator/freezer
- 4-burner ceramic cooktop
- Microwave oven
- Stainless steel sink
- Hand-held fire extinguisher
- Dishwasher
- First aid kit

Accommodations

MASTER STATEROOM

- Full beam, amidship
- Queen berth w/storage below
- Windows w/opening portholes
- 2 x Night Stands
- Settee
- Vanity w/mirror and stool
- Large walk-in closet
- Drawer storage
- Halogen overhead lights 24vDC
- 32" TV
- Radio/CD/DVD player
- Harmon Kardon sound system
- Air conditioning
- En suite head w/shower

VIP

- Centerline double berth w/storage below
- Hanging locker
- Cabinet & drawer storage
- TV/DVD/stereo
- Harmon Kardon sound system
- Overhead lighting
- Opening portholes
- En Suite head w/shower

GUEST STATEROOM

- Double berth Athwartship w/storage below
- Hanging locker
- TV/DVD/stereo

- Fusion sound system
- Opening porthole
- Head w/shower shared w/2nd guest cabin

GUEST STATEROOM

- Twin berths w/storage below
- Hanging locker
- TV/DVD/stereo
- Fusion sound system
- Opening porthole
- Night stand
- Shared head w/shower

2 Berth Crew accommodations w/head & shower aft

Miele washer and dryer in Crew quarters

Main Helm Console

- Helm console and helm seats (S)
- Observation settee(P)
- Hydraulic power steering
- Raymarine radar/chart plotter with GPS (MH & FB)
- Raymarine autopilot (MH & FB)
- Analog & digital engine instrumentation (MH & FB)
- Raymarine speed and depth sounder & repeater on FB
- Raymarine Night Vision System (MH & FB)
- Rudder indicator
- Fresh water gauge and fuel gauge
- VHF radio with DSC
- Trim tab controls
- Compass
- Horn
- Door to side deck

Flybridge

- Helm Station w/full electronics
- 2 x Helm chairs
- Raymarine color radar/chartplotter/GPS repeater
- Hardtop w/retractable canopy
- Teak Deck

- 2 x U-Settees, one w/folding teak table on SS pedestal
- Wet bar w/icemaker, refrigerator and electric grill
- Bose sound system
- Sunpad forward of helm

Deck

- Fittings all in stainless steel
- Besenzoni hydraulic stainless steel and teak passerelle
- Hydraulic lift platform w/wireless remote control for Tender
- Tender chocks on swim platform
- 4 x Aqualuma underwater lights
- LED side deck lights
- 8 stainless steel deck cleats plus oval mooring cleats
- Teak Decking: Swim platform, aft deck, fly bridge, side decks and fore deck
- Stainless steel bow roller with anchor stop
- Stainless steel bow plate
- Delta anchor and galvanized chain
- 24v bow winch and capstan w/deck, cockpit and fly bridge controls
- Chain locker
- 24v Spotlight
- Fore deck storage lockers
- Fore deck seating and sun pads w/folding back rests
- Fresh water wash down system fore and aft
- Covers for fly bridge seats and wet bar

Mechanical

- Twin MAN V12's @ 1400 hp each
- Sleipner hydraulic fin stabilization system
- Sleipner hydraulic bow & stern thrusters
- Wiring and plumbing for watermaker
- Separate fuel filters/water separators
- Automatic fire extinguishers
- Engine room and forward bilge flood alarms
- Automatic bilge pumps
- Automatic flood pumps
- 4 x 24v Exhaust fans
- Manual bilge pump
- Tropical spec air-conditioning

Electrical

- 2 x 27kW Onan generators w/sound shields
- 2 x Shore power dockside connections
- Galvanic isolator
- 24v & 12v electrical system
- 8 x 24v engine batteries
- 8 x 24v domestic batteries
- 4 x 12v generator batteries
- 24v & 12v Battery charger
- Water heater

Construction

- Built to US Coast Guard Regulations & USA specs
- Hand-laid GRP
- Gel coat including stripes
- Vinylester skin coat with powderbound mat
- Stitched multi-axial reinforced single-skin bottom
- Balsa-cored hull topsides
- Cored deck and superstructure
- Hull stiffened with longitudinal stringers supported by transverse bulkheads and floors

Disclaimer

The Company offers the details of this vessel in good faith but cannot guarantee or warrant the accuracy of this information nor warrant the condition of the vessel. A buyer should instruct his agents, or his surveyors, to investigate such details as the buyer desires validated. This vessel is offered subject to prior sale, price change, or withdrawal without notice.

Исключения

При продаже яхты исключаются личные вещи владельца.

Отказ от ответственности

Компания предоставляет описание судна или яхты добросовестно, но не может гарантировать точность этой информации, а также не ручается за техническое состояние. Покупатель должен проинструктировать своих агентов или оценщиков исследовать представленную информацию более подробно, по собственному желанию. Продажа судна или яхты, изменение цены или снятие с продажи будет происходить без

предварительного уведомления.

ФОТОГРАФИИ

2_2014 73ft Sunseeker Manhattan BORN TO RUN 3_2014 73ft Sunseeker Manhattan BORN TO RUN



4_2014 73ft Sunseeker Manhattan BORN TO RUN 5_2014 73ft Sunseeker Manhattan BORN TO RUN



6_2014 73ft Sunseeker Manhattan BORN TO RUN



8_2014 73ft Sunseeker Manhattan BORN TO RUN



10_2014 73ft Sunseeker Manhattan BORN TO RUN



11_2014 73ft Sunseeker Manhattan BORN TO RUN



12_2014 73ft Sunseeker Manhattan BORN TO RUN



13_2014 73ft Sunseeker Manhattan BORN TO RUN



14_2014 73ft Sunseeker Manhattan BORN TO RUN



15_2014 73ft Sunseeker Manhattan BORN TO RUN



16_2014 73ft Sunseeker Manhattan BORN TO RUN



17_2014 73ft Sunseeker Manhattan BORN TO RUN



18_2014 73ft Sunseeker Manhattan BORN TO RUN



19_2014 73ft Sunseeker Manhattan BORN TO RUN



20_2014 73ft Sunseeker Manhattan BORN TO RUN



21_2014 73ft Sunseeker Manhattan BORN TO RUN



22_2014 73ft Sunseeker Manhattan BORN TO RUN



23_2014 73ft Sunseeker Manhattan BORN TO RUN



24_2014 73ft Sunseeker Manhattan BORN TO RUN



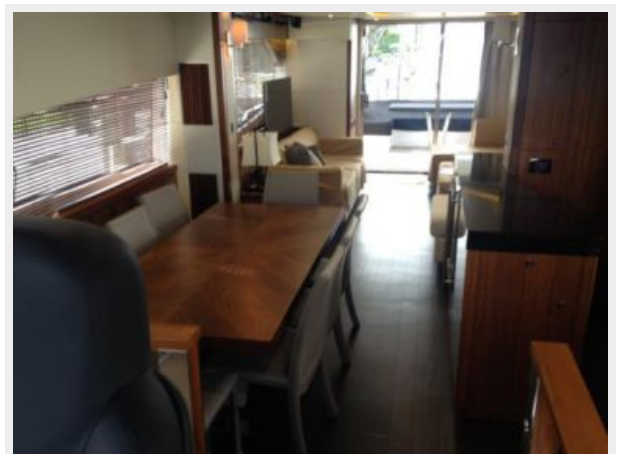
25_2014 73ft Sunseeker Manhattan BORN TO RUN



26_2014 73ft Sunseeker Manhattan BORN TO RUN



27_2014 73ft Sunseeker Manhattan BORN TO RUN



28_2014 73ft Sunseeker Manhattan BORN TO RUN



29_2014 73ft Sunseeker Manhattan BORN TO RUN



30_2014 73ft Sunseeker Manhattan BORN TO RUN



31_2014 73ft Sunseeker Manhattan BORN TO RUN



32_2014 73ft Sunseeker Manhattan BORN TO RUN



33_2014 73ft Sunseeker Manhattan BORN TO RUN



34_2014 73ft Sunseeker Manhattan BORN TO RUN



35_2014 73ft Sunseeker Manhattan BORN TO RUN



36_2014 73ft Sunseeker Manhattan BORN TO RUN



37_2014 73ft Sunseeker Manhattan BORN TO RUN



38_2014 73ft Sunseeker Manhattan BORN TO RUN



39_2014 73ft Sunseeker Manhattan BORN TO RUN



40_2014 73ft Sunseeker Manhattan BORN TO RUN



КОНТАКТЫ

Андрей Шестаков (Andrey Shestakov) – ведущий яхтенный брокер отдела продаж яхт и судов компании Shestakov Yacht Sales Inc. Официальный представитель Shestakov Yacht Sales Inc. для русскоговорящих клиентов в центральном офисе компании в Майами/Форт Лодердейл/Флорида/США.

Контактная информация

Email: andrey@shestakovyachtsales.com

Web: shestakovyachtsales.com

Телефоны

Краснодарский край: **+7(918)465-66-44**

США, Майами, Флорида: **+1(954)274-4435**

Время работы

Понедельник – Суббота: **9:00 - 21:00**
EDT

Воскресенье: **Закрито**

Адрес



Harbour Towne Marina, 850 NE 3rd St,
STE 213, Dania, FL 33004