

## GLORY B II — CHRIS CRAFT



**Builder:** CHRIS CRAFT

**Year Built:** 1985

**Model:** Cruising Yacht

**Price:** PRICE ON APPLICATION

**Location:** United States

**LOA:** 50' 0" (15.24m)

**Beam:** 15' 3" (4.65m)

**Max Draft:** 3' 8" (1.12m)

**Cruise Speed:** 12 Kts. (14 MPH)

**Max Speed:** 18 Kts. (21 MPH)

Our experienced yacht broker, Andrey Shestakov, will help you choose and buy a yacht that best suits your needs **Glory B II — CHRIS CRAFT** from our catalogue. Presently, at Shestakov Yacht Sales Inc., we have a wide variety of yachts available on our sale's list. We also work in close contact with all the big yacht manufacturers from all over the world.

If you would like to buy a yacht **Glory B II — CHRIS CRAFT** or would like help answering any questions concerning purchasing, selling or chartering a yacht, please call **+1(954)274-4435**

# TABLE OF CONTENTS

TABLE OF CONTENTS	2
SPECIFICATIONS	6
Overview	6
Basic Information	6
Dimensions	6
Speed, Capacities and Weight	6
Accommodations	7
Hull and Deck Information	7
Engine Information	7
DETAILED INFORMATION	8
MAIN DESCRIPTION	8
1985 Chris Craft Constellation 500 Walk Through	8
1985 Chris Craft Constellation 500 Deck, Hull, Fly	8
1985 Chris Craft Constellation 500 Accommodations	9
1985 Chris Craft Constellation 500 Engine/Mechani	11
1985 Chris Craft Constellation 500 Weelhouse Elect	11
1985 Chris Craft Constellation 500 Bridge Electron	12
1985 Chris Craft Constellation 500 Exclusions	12
DISCLAIMER	12
Exclusions	12
Disclaimer	12
PHOTOS	14
101 IMG_E3341	14
101	14
121	14
120	14
122	15
123	15

125	15
124	15
126	16
127	16
129	16
128	16
130	17
150	17
151	17
152	17
201	18
202	18
204	18
203	18
205	19
206	19
207	19
209	19
211	19
210	19
213	20
212	20
220	20
221	20
222	21
230	21
231	21
240	21
241	22

243	22
243A	22
244	22
245	23
247	23
248	23
250	23
251	24
252	24
260	24
261	24
261A	25
262	25
263	25
264	25
267	26
268	26
269	26
270	26
272	27
271	27
273	27
275	27
320	28
310	28
321	28
322	28
340	29
341	29

342	29
343	29
350	30
351	30
352	30
354	30
356	30
355	30
357	31
358	31
359	31
<b>CONTACTS</b>	<b>32</b>
Contact details	32
Telephones	32
Office hours	32
Address	32

---

# SPECIFICATIONS

---

## Overview

---

The name Chris Craft is synonymous with boating, since the launch of its first boat in 1874. The Constellation line was considered the most luxurious Chris Craft when it was first introduced, and the top of the Chris Craft line. They were built in the company's Swansboro, NC facility. Glory B II is one of these grand ladies, which makes the most of her 50' length, offering 3 staterooms and 3 heads. This boat makes an excellent live-aboard with so much living space, and separate areas. There is also plenty of room for entertaining. Glory B II has the great "bones" of a legendary Chris Craft, and is ready for a new owner to outfit and personalize her to their own tastes and décor aesthetics.

## Basic Information

---

**Category:** Cruising Yacht

**Model Year:** 1985

**Year Built:** 1985

**Country:** United States

## Dimensions

---

**LOA:** 50' 0" (15.24m)

**Beam:** 15' 3" (4.65m)

**Max Draft:** 3' 8" (1.12m)

## Speed, Capacities and Weight

---

**Cruise Speed:** 12 Kts. (14 MPH)

**Max Speed:** 18 Kts. (21 MPH)

**Displacement:** 67500 Pounds

**Water Capacity:** 100 Gallons

**Holding Tank:** 50 Gallons

**Fuel Capacity:** 1000 Gallons

---

## Accommodations

---

**Total Cabins:** 3

**Total Berths:** 4

**Total Heads:** 3

---

## Hull and Deck Information

---

**Hull Material:** Fiberglass

---

## Engine Information

---

**Engines:** 2

**Manufacturer:** Detroit Diesel

**Model:** 6V92-TIB

**Engine Type:** Inboard

**Fuel Type:** Diesel

---

# DETAILED INFORMATION

---

## MAIN DESCRIPTION

---

The name Chris Craft is synonymous with boating, since the launch of its first boat in 1874. The Constellation line was considered the most luxurious Chris Craft when it was first introduced, and the top of the Chris Craft line. They were built in the company's Swansboro, NC facility. Glory B II is one of these grand ladies, which makes the most of her 50' length, offering 3 staterooms and 3 heads. This boat makes an excellent live-aboard with so much living space, and separate areas. There is also plenty of room for entertaining.

Glory B II has the great "bones" of a legendary Chris Craft, and is ready for a new owner to outfit and personalize her to their own tastes and décor aesthetics.

## 1985 Chris Craft Constellation 500 Walk Through

---

Glory B II can be entered by either the port or starboard door, or the aft door from the deck/balcony above the swim platform, into the upper salon/wheelhouse. A wheelhouse ladder leads to the flybridge. Steps on the port side go down to the lower salon, with the dinette forward to port, and the galley forward to starboard. A guest stateroom/crew quarters with ensuite head is forward of the galley.

There is a den/stateroom amidships, across from another head. The master saleroom is the farthest aft cabin, with ensuite head.

## 1985 Chris Craft Constellation 500 Deck, Hull, Fly

---

The swim platform on Glory B II is a TNT lift (currently non-operational), with a ladder that leads to the full beam aft deck balcony. This is a nice feature for both line handling and relaxing at sunrise or sunset. A full size door, with window, leads into the upper salon.

The foredeck can be reached from either the starboard or port doors in the upper salon. There is a large seat across the bow, and a large dock box for extra storage. The foredeck area is also large enough for free-standing chairs, which makes the entire area another space for entertaining or for enjoying quiet time on the water. The Bruce anchor windlass can be controlled by the foot switches at the bow or by the paddle switch on the flybridge.

The flybridge has its own full set of controls, duplicated in the wheelhouse. There is a navy blue full enclosure with eisenglass, with a matching enclosure around the aft deck rails. A wet bar



and plenty of guest seating provide yet another area for entertaining.

The entire hull and superstructure received fresh paint in the Summer of 2016 by a previous owner.

---

## 1985 Chris Craft Constellation 500 Accommodations

---

### UPPER SALON

The first area entered on Glory B II is the upper salon. There are windows all around, all with sunshades, which let in an abundance of natural light, as well as providing a 360 degree view. The sole is painted fiberglass, ready for whatever flooring the new owner selects. The upper salon has one of the five reverse cycle AC/heat units on board, although the one in the upper salon is not functioning. The current owner uses a free-standing air conditioning unit, which conveys with the vessel.

A wet bar with a liquor dispensing system, and a refrigerator help make the upper salon of Glory B II a great place to entertain. The area is large enough for a U shaped settee or other free-standing furniture.

The other side of the bar area is the double helm seat for the wheelhouse. The full helm has all of the controls and electronics necessary for operating the vessel from indoors. The ladder access to the flybridge is to starboard of the helm seat. There is a large area under the windshield for more storage.

### LOWER SALON

The large lower salon, dinette, and galley are all on the same level, a few steps down to port from the upper salon. The entire area is carpeted with Berber style carpeting. The access to the engine room is through hatches in the lower salon sole.

A free-standing all-weather wicker loveseat and matching table (which convey with the vessel) is in front of the mirrored bulkhead, which has two mounted wall scones for mood lighting. There are cabinets along both outer bulkhead walls. Chris Craft used Burmese teak throughout the Constellation line. There is a large open floor plan, which will allow the new owner to design the lower salon living space to meet their own needs.

The opening windows allow for nice cross ventilation, but are covered by sun shades to keep out the heat.

### DINETTE

The corner dinette is forward, to port, and was recently upholstered in a neutral fabric. There is a custom built, glass-top ship's wheel table to use for dining, which conveys with the vessel.

### GALLEY

The galley on Glory B II is forward to starboard, a few steps down from the lower salon sole. The galley sole is parquet wood flooring. The galley features: a full size refrigerator/freezer, a microwave oven, a three burner electric stove, a rotisserie oven, a garbage disposal, and dual sinks. There is also teak cabinetry for storage. The primary pantry storage is in the cabinets across from the galley, to port.

## MASTER STATEROOM

The full beam master stateroom is located down a few steps from the lower salon, farthest aft on Glory B II. It features a Queen centerline berth, with plenty of walk around room. There is a huge cedar-lined walk-in closet to starboard. If that is not enough storage there are cabinets with smoked glass doors with teak cross hatching on either side of the mirrored bulkhead headboard. Even more storage is located in the cabinets on either side of the stateroom, on the outside walls, below the sliding windows.

A small desk or make-up area is located across from the bed, with a TV. There are two reading lamps over the bed.

## MASTER HEAD

The ensuite master head consists of an electric head, vanity, and separate stall shower.

## DEN/GUEST STATEROOM

One of the more unique design features of the Chris Craft Constellation is the den/guest stateroom. This is forward of the master stateroom, to starboard. The room can be quite versatile. The lower couch can be used as a full bed. The upper berth is a single Pullman style berth. (The necessary support straps are not onboard.)

The rest of the room is designed to be an office or a library, with built-in teak bookshelves. They really give the room their personality, and it would make the perfect "home" office for anyone living aboard this yacht. The sole is painted fiberglass, ready for whatever flooring the new owner selects.

## DAY HEAD

A day head is located across the companionway from the den/guest stateroom. It features an electric head and vanity, and can be converted to a wet head.

## GUEST STATEROOM/CREW QUARTERS

The forward stateroom on Glory B II, forward of the galley, can be used as either a guest stateroom or crew quarters. It features a double berth on the port bulkhead. There is an amazing amount of headroom in this stateroom. There are storage closets to starboard, and an ensuite head forward. Since this stateroom is separated from the aft staterooms by the lower salon, there

is some flexibility in its usage. It has a separate AC/reverse cycle heat.

## FORWARD HEAD

The forward head features an electric head, separate stall shower, and vanity. A closet behind the head opens to a portlight and more storage. A portlight over the vanity allows for cross breeze ventilation.

---

## 1985 Chris Craft Constellation 500 Engine/Mechani

---

The engine room on Glory B II is accessible through the hatches in the lower salon sole. The clearance around the two engines makes engine servicing easier. The engines are mounted on steel beams that run parallel and are bolted to the hull stringers. The engine room is protected by a Halon fire protection system, and also includes the fuel filters, the oil transfer system, and the main electrical distribution system.

The equipment room on Glory B II is accessed either through the galley sole or the engine room. It houses the generator, the water distribution system, and the septic processing equipment.

---

## 1985 Chris Craft Constellation 500 Weelhouse Elect

---

Danforth Constellation Compass

Data Marine International Offshore Depth Display

Data Marine Navigator (speed, odometer, elapsed time)

Robertson Autopilot AP200DL with remote control and remote rudder indicators

KVH Digital Compass

Uniden Solara DSC VHF

Magellan GPS - inop

SEA 222 HF Transceiver

Fireboy remote fire suppression controls

Prop Sync

---

## 1985 Chris Craft Constellation 500 Bridge Electron

---

Garmin 7608xsvRichie Compass

Uniden Solara DSC VHF

Standard Horizon Eclipse VHF

Rudder position indicator

Data Marine Speed Indicator

Data Marine Depth gauge and alarm system

Fixed spotlight

Raytheon 48 mile Radar

Prop Sync

Fireboy fire alarm

---

## 1985 Chris Craft Constellation 500 Exclusions

---

The personal belongings of the sellers are excluded.

---

## DISCLAIMER

---

The Company offers the details of this vessel in good faith but cannot guarantee or warrant the accuracy of this information nor warrant the condition of the vessel. A buyer should instruct his agents, or his surveyors, to investigate such details as the buyer desires validated. This vessel is offered subject to prior sale, price change, or withdrawal without notice.

---

## Exclusions

---

Owner's personal belongings.

---

## Disclaimer

---

The Company offers the details of this vessel or yacht in good faith but cannot guarantee or warrant the accuracy of this information nor warrant the condition of the vessel. A buyer should instruct his representatives, agents, or his surveyors, to investigate such details as the buyer desires validated. This vessel or yacht is offered subject to prior sale, price change, or withdrawal

without notice.

# PHOTOS

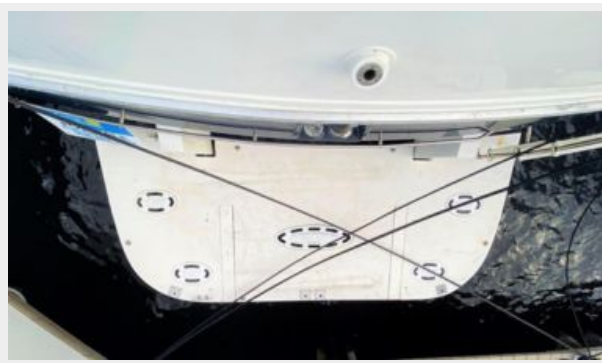
101 IMG\_E3341



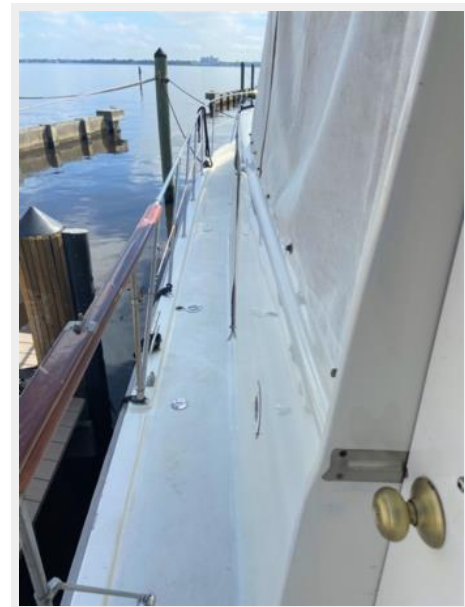
101



120



121



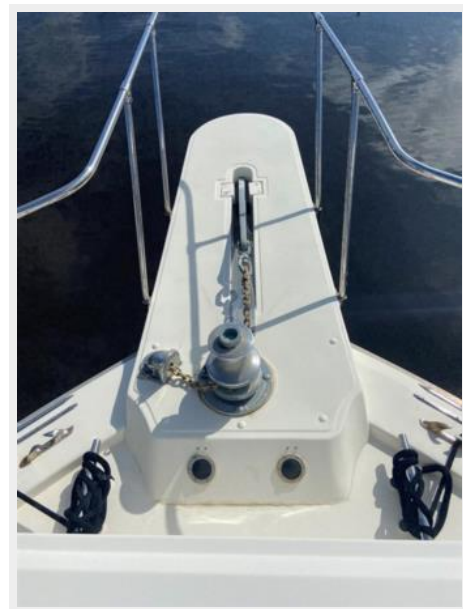
122



123



125



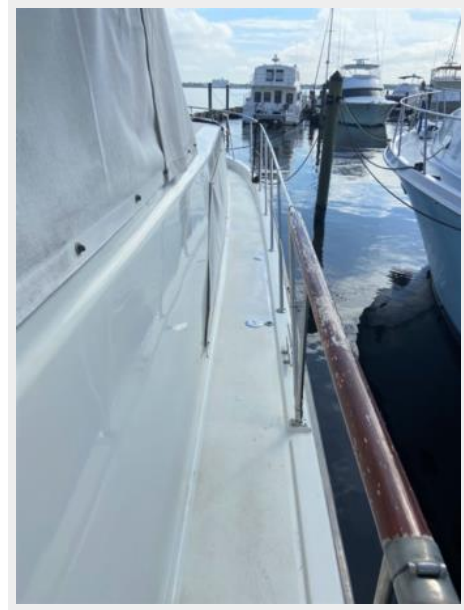
124



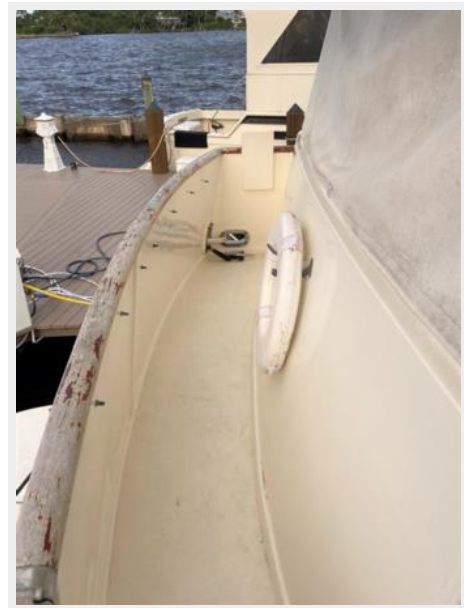
126



127



129



128





130



150



151



152



201



202



203



204



205



206



207



209



210



211





212



213



220



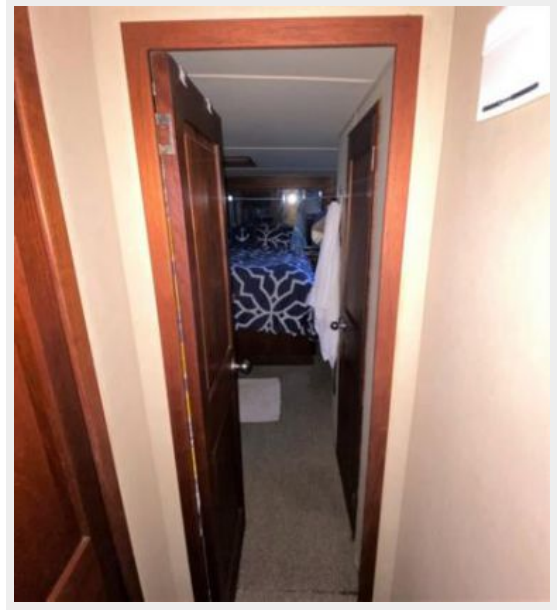
221



222



230



231



240



241



243



243A

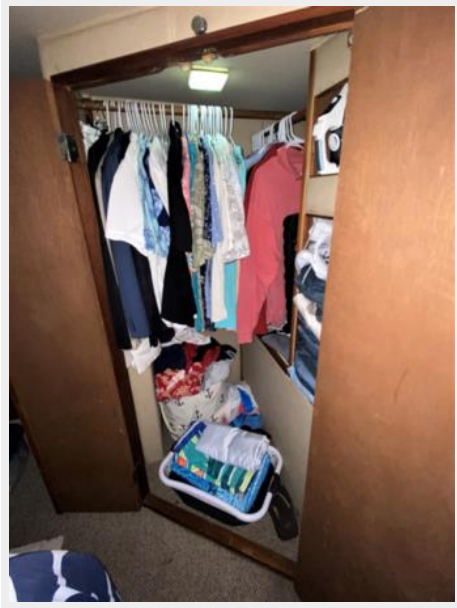


244





245



247



248



250



251



252



260



261





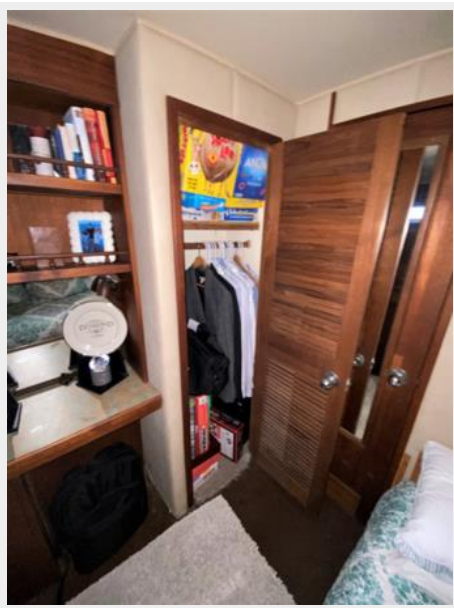
261A



262



263



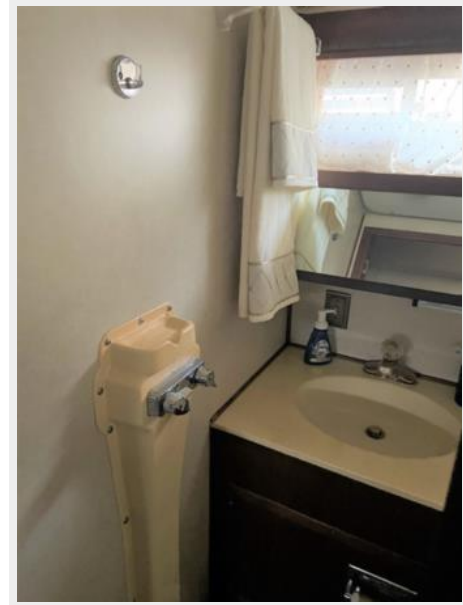
264



267



268



269



270



271



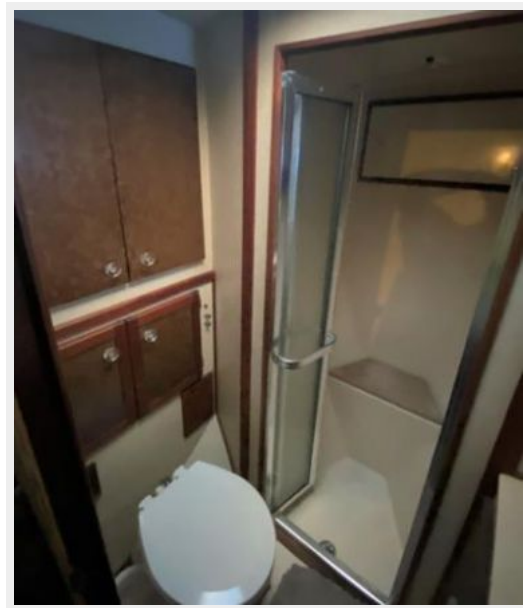
272



273



275





310



320



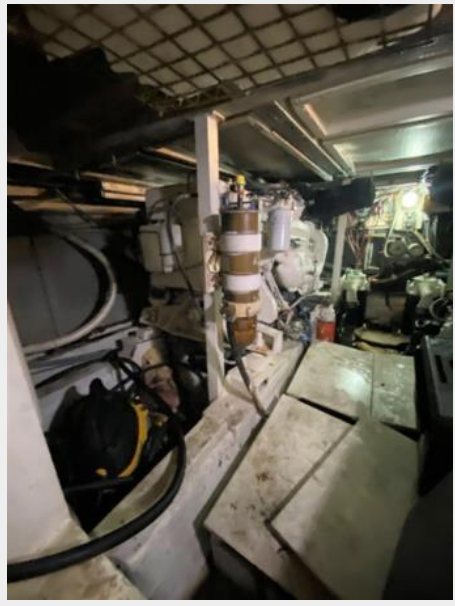
321



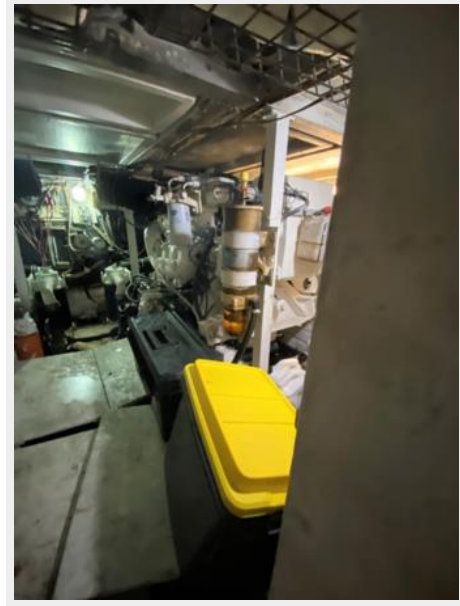
322



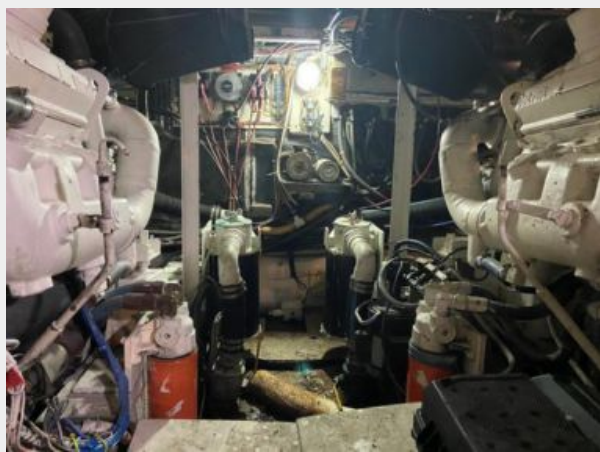
340



341



342



343



350



351



352



354



355



356





357



358



359



# CONTACTS

---

Andrey Shestakov, leading yacht broker of the sales department of Shestakov Yacht Sales Inc. Shestakov Yacht Sales Inc., the official representative of the Miami/Fort Lauderdale FL headquarters.

## Contact details

---

Email: [andrey@shestakovyachtsales.com](mailto:andrey@shestakovyachtsales.com)

Web: [shestakovyachtsales.com/en/](http://shestakovyachtsales.com/en/)

## Telephones

---

USA: +1(954)274-4435

## Office hours

---

Monday – Saturday: **9:00 - 21:00** EDT

Sunday: **closed**

## Address

---



Harbour Towne Marina, 850 NE 3rd St,  
STE 213, Dania, FL 33004