

GLORY B II — CHRIS CRAFT



Судостроитель: CHRIS CRAFT

Год постройки: 1985

Модель: Cruising Yacht

Цена: **ЦЕНА ЯХТЫ ПО ЗАПРОСУ**

Местонахождение: United States

Длина общая: 50' 0" (15.24m)

Ширина: 15' 3" (4.65m)

Макс. осадка: 3' 8" (1.12m)

Крейс. скорость: 12 Kts. (14 MPH)

Макс. скорость: 18 Kts. (21 MPH)

Купить **Glory B II — CHRIS CRAFT** а также выбрать подходящую вам яхту из нашего каталога яхт вам поможет опытный яхтенный брокер Андрей Шестаков. На сегодняшний день компания **Shestakov Yacht Sales Inc.** имеет большое количество яхт в собственном списке продаж, а также тесно сотрудничает со всеми крупными яхтенными производителями по всему миру.

Для того чтобы купить яхту **Glory B II — CHRIS CRAFT** а также проконсультироваться по любому вопросу связанному с покупкой, продажей, чартером яхт позвоните по телефону **+7(918)465-66-44**.

ОГЛАВЛЕНИЕ

ОГЛАВЛЕНИЕ	2
ХАРАКТЕРИСТИКИ	6
Обзор	6
Основная информация	6
Размеры	6
Скорость, вместимость и масса	6
Размещение	7
Корпус и палуба	7
Информация о двигателе	7
ПОДРОБНОЕ ОПИСАНИЕ	8
MAIN DESCRIPTION	8
1985 Chris Craft Constellation 500 Walk Through	8
1985 Chris Craft Constellation 500 Deck, Hull, Fly	8
1985 Chris Craft Constellation 500 Accommodations	9
1985 Chris Craft Constellation 500 Engine/Mechani	11
1985 Chris Craft Constellation 500 Weelhouse Elect	11
1985 Chris Craft Constellation 500 Bridge Electron	12
1985 Chris Craft Constellation 500 Exclusions	12
DISCLAIMER	12
Исключения	12
Отказ от ответственности	12
ФОТОГРАФИИ	14
101 IMG_E3341	14
101	14
121	14
120	14
122	15
123	15

125	15
124	15
126	16
127	16
129	16
128	16
130	17
150	17
151	17
152	17
201	18
202	18
204	18
203	18
205	19
206	19
207	19
209	19
211	19
210	19
213	20
212	20
220	20
221	20
222	21
230	21
231	21
240	21
241	22

243	22
243A	22
244	22
245	23
247	23
248	23
250	23
251	24
252	24
260	24
261	24
261A	25
262	25
263	25
264	25
267	26
268	26
269	26
270	26
272	27
271	27
273	27
275	27
320	28
310	28
321	28
322	28
340	29
341	29

342	29
343	29
350	30
351	30
352	30
354	30
356	30
355	30
357	31
358	31
359	31
КОНТАКТЫ	32
Контактная информация	32
Телефоны	32
Время работы	32
Адрес	32

ХАРАКТЕРИСТИКИ

Обзор

The name Chris Craft is synonymous with boating, since the launch of its first boat in 1874. The Constellation line was considered the most luxurious Chris Craft when it was first introduced, and the top of the Chris Craft line. They were built in the company's Swansboro, NC facility. Glory B II is one of these grand ladies, which makes the most of her 50' length, offering 3 staterooms and 3 heads. This boat makes an excellent live-aboard with so much living space, and separate areas. There is also plenty of room for entertaining. Glory B II has the great "bones" of a legendary Chris Craft, and is ready for a new owner to outfit and personalize her to their own tastes and décor aesthetics.

Основная информация

Тип судна: Cruising Yacht

Модельный год: 1985

Год постройки: 1985

Страна: United States

Размеры

Длина общая: 50' 0" (15.24m)

Ширина: 15' 3" (4.65m)

Макс. осадка: 3' 8" (1.12m)

Скорость, вместимость и масса

Крейс. скорость: 12 Kts. (14 MPH)

Макс. скорость: 18 Kts. (21 MPH)

Водоизмещение: 67500 Pounds

Вместимость воды: 100 Gallons

Вместимость сточного бака: 50 Gallons

Объем топливного бака: 1000 Gallons

Размещение

Всего кают: 3

Всего коек: 4

Всего ком. состава: 3

Корпус и палуба

Материал корпуса: Fiberglass

Информация о двигателе

Двигатели: 2

Производитель: Detroit Diesel

Модель: 6V92-T1B

Тип двигателя: Inboard

Тип топлива: Diesel

ПОДРОБНОЕ ОПИСАНИЕ

MAIN DESCRIPTION

The name Chris Craft is synonymous with boating, since the launch of its first boat in 1874. The Constellation line was considered the most luxurious Chris Craft when it was first introduced, and the top of the Chris Craft line. They were built in the company's Swansboro, NC facility. Glory B II is one of these grand ladies, which makes the most of her 50' length, offering 3 staterooms and 3 heads. This boat makes an excellent live-aboard with so much living space, and separate areas. There is also plenty of room for entertaining.

Glory B II has the great "bones" of a legendary Chris Craft, and is ready for a new owner to outfit and personalize her to their own tastes and décor aesthetics.

1985 Chris Craft Constellation 500 Walk Through

Glory B II can be entered by either the port or starboard door, or the aft door from the deck/balcony above the swim platform, into the upper salon/wheelhouse. A wheelhouse ladder leads to the flybridge. Steps on the port side go down to the lower salon, with the dinette forward to port, and the galley forward to starboard. A guest stateroom/crew quarters with ensuite head is forward of the galley.

There is a den/stateroom amidships, across from another head. The master saleroom is the farthest aft cabin, with ensuite head.

1985 Chris Craft Constellation 500 Deck, Hull, Fly

The swim platform on Glory B II is a TNT lift (currently non-operational), with a ladder that leads to the full beam aft deck balcony. This is a nice feature for both line handling and relaxing at sunrise or sunset. A full size door, with window, leads into the upper salon.

The foredeck can be reached from either the starboard or port doors in the upper salon. There is a large seat across the bow, and a large dock box for extra storage. The foredeck area is also large enough for free-standing chairs, which makes the entire area another space for entertaining or for enjoying quiet time on the water. The Bruce anchor windlass can be controlled by the foot switches at the bow or by the paddle switch on the flybridge.

The flybridge has its own full set of controls, duplicated in the wheelhouse. There is a navy blue full enclosure with eisenglass, with a matching enclosure around the aft deck rails. A wet bar

and plenty of guest seating provide yet another area for entertaining.

The entire hull and superstructure received fresh paint in the Summer of 2016 by a previous owner.

1985 Chris Craft Constellation 500 Accommodations

UPPER SALON

The first area entered on Glory B II is the upper salon. There are windows all around, all with sunshades, which let in an abundance of natural light, as well as providing a 360 degree view. The sole is painted fiberglass, ready for whatever flooring the new owner selects. The upper salon has one of the five reverse cycle AC/heat units on board, although the one in the upper salon is not functioning. The current owner uses a free-standing air conditioning unit, which conveys with the vessel.

A wet bar with a liquor dispensing system, and a refrigerator help make the upper salon of Glory B II a great place to entertain. The area is large enough for a U shaped settee or other free-standing furniture.

The other side of the bar area is the double helm seat for the wheelhouse. The full helm has all of the controls and electronics necessary for operating the vessel from indoors. The ladder access to the flybridge is to starboard of the helm seat. There is a large area under the windshield for more storage.

LOWER SALON

The large lower salon, dinette, and galley are all on the same level, a few steps down to port from the upper salon. The entire area is carpeted with Berber style carpeting. The access to the engine room is through hatches in the lower salon sole.

A free-standing all-weather wicker loveseat and matching table (which convey with the vessel) is in front of the mirrored bulkhead, which has two mounted wall scones for mood lighting. There are cabinets along both outer bulkhead walls. Chris Craft used Burmese teak throughout the Constellation line. There is a large open floor plan, which will allow the new owner to design the lower salon living space to meet their own needs.

The opening windows allow for nice cross ventilation, but are covered by sun shades to keep out the heat.

DINETTE

The corner dinette is forward, to port, and was recently upholstered in a neutral fabric. There is a custom built, glass-top ship's wheel table to use for dining, which conveys with the vessel.

GALLEY

The galley on Glory B II is forward to starboard, a few steps down from the lower salon sole. The galley sole is parquet wood flooring. The galley features: a full size refrigerator/freezer, a microwave oven, a three burner electric stove, a rotisserie oven, a garbage disposal, and dual sinks. There is also teak cabinetry for storage. The primary pantry storage is in the cabinets across from the galley, to port.

MASTER STATEROOM

The full beam master stateroom is located down a few steps from the lower salon, farthest aft on Glory B II. It features a Queen centerline berth, with plenty of walk around room. There is a huge cedar-lined walk-in closet to starboard. If that is not enough storage there are cabinets with smoked glass doors with teak cross hatching on either side of the mirrored bulkhead headboard. Even more storage is located in the cabinets on either side of the stateroom, on the outside walls, below the sliding windows.

A small desk or make-up area is located across from the bed, with a TV. There are two reading lamps over the bed.

MASTER HEAD

The ensuite master head consists of an electric head, vanity, and separate stall shower.

DEN/GUEST STATEROOM

One of the more unique design features of the Chris Craft Constellation is the den/guest stateroom. This is forward of the master stateroom, to starboard. The room can be quite versatile. The lower couch can be used as a full bed. The upper berth is a single Pullman style berth. (The necessary support straps are not onboard.)

The rest of the room is designed to be an office or a library, with built-in teak bookshelves. They really give the room their personality, and it would make the perfect "home" office for anyone living aboard this yacht. The sole is painted fiberglass, ready for whatever flooring the new owner selects.

DAY HEAD

A day head is located across the companionway from the den/guest stateroom. It features an electric head and vanity, and can be converted to a wet head.

GUEST STATEROOM/CREW QUARTERS

The forward stateroom on Glory B II, forward of the galley, can be used as either a guest stateroom or crew quarters. It features a double berth on the port bulkhead. There is an amazing amount of headroom in this stateroom. There are storage closets to starboard, and an ensuite head forward. Since this stateroom is separated from the aft staterooms by the lower salon, there

is some flexibility in its usage. It has a separate AC/reverse cycle heat.

FORWARD HEAD

The forward head features an electric head, separate stall shower, and vanity. A closet behind the head opens to a portlight and more storage. A portlight over the vanity allows for cross breeze ventilation.

1985 Chris Craft Constellation 500 Engine/Mechani

The engine room on Glory B II is accessible through the hatches in the lower salon sole. The clearance around the two engines makes engine servicing easier. The engines are mounted on steel beams that run parallel and are bolted to the hull stringers. The engine room is protected by a Halon fire protection system, and also includes the fuel filters, the oil transfer system, and the main electrical distribution system.

The equipment room on Glory B II is accessed either through the galley sole or the engine room. It houses the generator, the water distribution system, and the septic processing equipment.

1985 Chris Craft Constellation 500 Weelhouse Elect

Danforth Constellation Compass

Data Marine International Offshore Depth Display

Data Marine Navigator (speed, odometer, elapsed time)

Robertson Autopilot AP200DL with remote control and remote rudder indicators

KVH Digital Compass

Uniden Solara DSC VHF

Magellan GPS - inop

SEA 222 HF Transceiver

Fireboy remote fire suppression controls

Prop Sync

1985 Chris Craft Constellation 500 Bridge Electron

Garmin 7608xsvRichie Compass

Uniden Solara DSC VHF

Standard Horizon Eclipse VHF

Rudder position indicator

Data Marine Speed Indicator

Data Marine Depth gauge and alarm system

Fixed spotlight

Raytheon 48 mile Radar

Prop Sync

Fireboy fire alarm

1985 Chris Craft Constellation 500 Exclusions

The personal belongings of the sellers are excluded.

DISCLAIMER

The Company offers the details of this vessel in good faith but cannot guarantee or warrant the accuracy of this information nor warrant the condition of the vessel. A buyer should instruct his agents, or his surveyors, to investigate such details as the buyer desires validated. This vessel is offered subject to prior sale, price change, or withdrawal without notice.

Исключения

При продаже яхты исключаются личные вещи владельца.

Отказ от ответственности

Компания предоставляет описание судна или яхты добросовестно, но не может гарантировать точность этой информации, а также не ручается за техническое состояние. Покупатель должен проинструктировать своих агентов или оценщиков исследовать представленную информацию более подробно, по собственному желанию.

Продажа судна или яхты, изменение цены или снятие с продажи будет происходить без предварительного уведомления.

ФОТОГРАФИИ

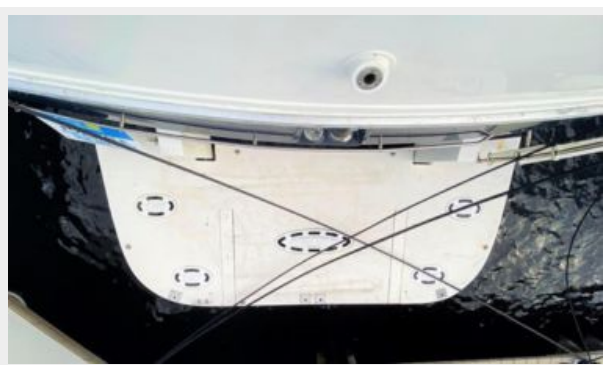
101 IMG_E3341



101



120



121



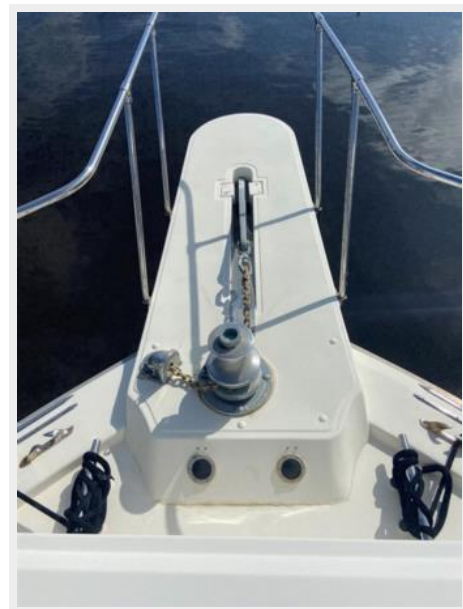
122



123



125



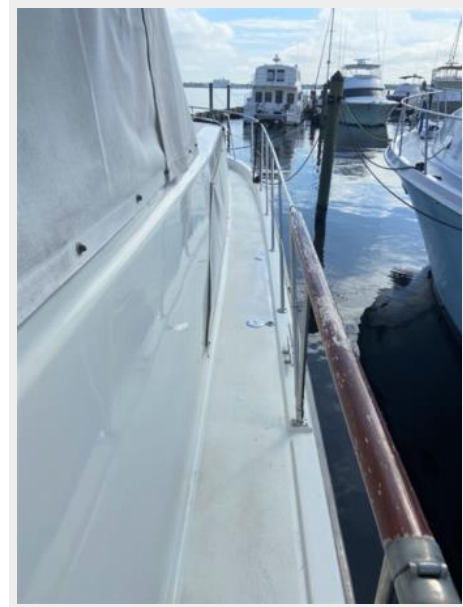
124



126



127



129



128



130



150



151



152



201



202



203



204



205



206



207



209



210



211



212



213



220



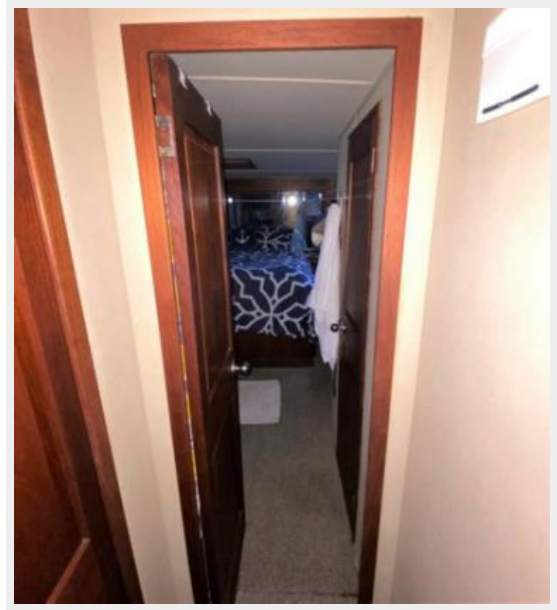
221



222



230



231



240



241



243



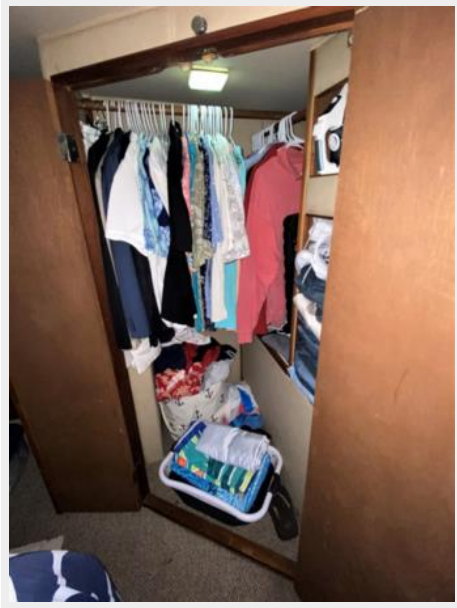
243A



244



245



247



248



250



251



252



260



261



261A



262



263



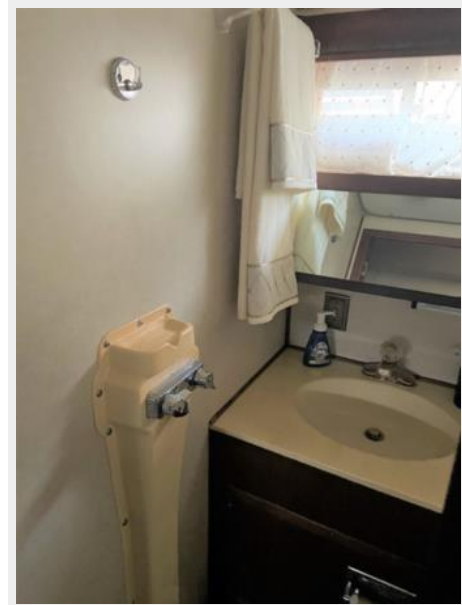
264



267



268



269



270



271



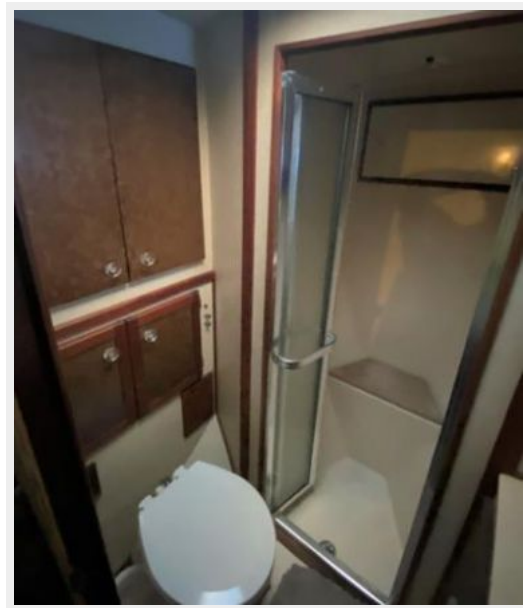
272



273



275



310



320



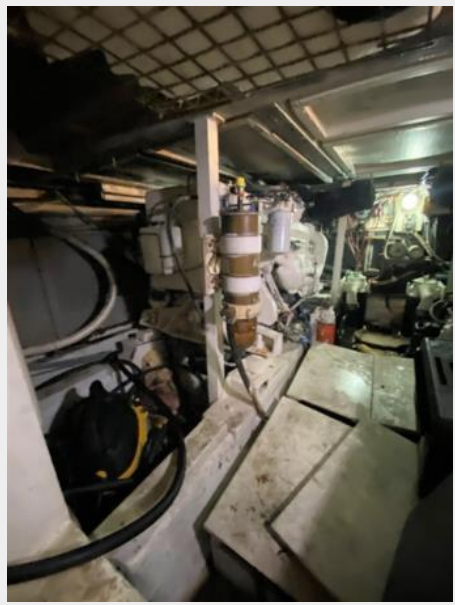
321



322



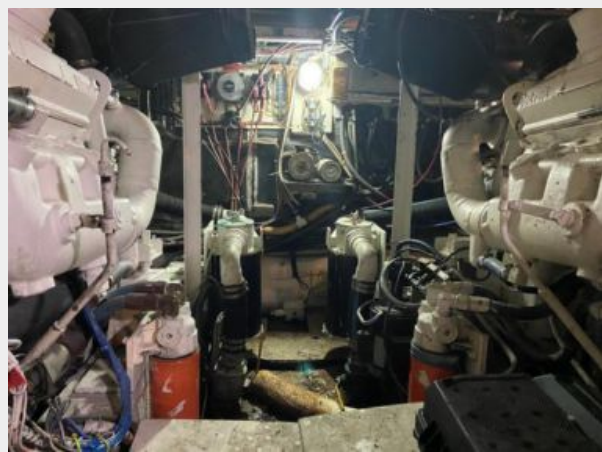
340



341



342



343



350



351



352



354



355



356



357



358



359



КОНТАКТЫ

Андрей Шестаков (Andrey Shestakov) – ведущий яхтенный брокер отдела продаж яхт и судов компании Shestakov Yacht Sales Inc. Официальный представитель Shestakov Yacht Sales Inc. для русскоговорящих клиентов в центральном офисе компании в Майами/Форт Лодердейл/Флорида/США.

Контактная информация

Email: andrey@shestakovyachtsales.com

Web: shestakovyachtsales.com

Телефоны

Краснодарский край: **+7(918)465-66-44**

США, Майами, Флорида: **+1(954)274-4435**

Время работы

Понедельник – Суббота: **9:00 - 21:00**
EDT

Воскресенье: **Закрито**

Адрес



Harbour Towne Marina, 850 NE 3rd St,
STE 213, Dania, FL 33004