

SEA TIGER — WELLCRAFT



Builder: WELLCRAFT

Year Built: 1995

Model: SHELBY

Price: PRICE ON APPLICATION

Location: United States

LOA: 46' 0" (14.02m)

Beam: 14' 6" (4.42m)

Min Draft: 3' 6" (1.07m)

Cruise Speed: 22 Kts. (25 MPH)

Max Speed: 29 Kts. (33 MPH)

Our experienced yacht broker, Andrey Shestakov, will help you choose and buy a yacht that best suits your needs **SEA TIGER — WELLCRAFT** from our catalogue. Presently, at Shestakov Yacht Sales Inc., we have a wide variety of yachts available on our sale's list. We also work in close contact with all the big yacht manufacturers from all over the world.

If you would like to buy a yacht **SEA TIGER — WELLCRAFT** or would like help answering any questions concerning purchasing, selling or chartering a yacht, please call **+1(954)274-4435**

TABLE OF CONTENTS

TABLE OF CONTENTS	2
SPECIFICATIONS	4
Basic Information	4
Dimensions	4
Speed, Capacities and Weight	4
Accommodations	4
Hull and Deck Information	4
Engine Information	5
DETAILED INFORMATION	6
Highlights	6
Cockpit	6
Salon	6
Galley	7
Forward Stateroom	7
Aft Stateroom	7
Flybridge and Navigation	8
Hull and Deck	8
Mechanical	9
Canvas	9
Exclusions	9
Disclaimer	9
PHOTOS	11
Bow-2	11
Deck Lounge-2	11
Saloon-1	11
Saloon-3	11
Galley-5	12
Saloon-2	12

Galley-3	12
Galley-2	12
Galley-4	13
Galley-1	13
Master-1	13
Master-2	13
Master-3	13
Master-4	13
Master Head-1	14
Master Head-2	14
Fwd Head	14
Fwd Strm-1	14
Fwd Strm-3	15
Fwd Strm-2	15
Fwd Strm-4	15
eng1	15
eng2	16
eng3	16
eng5	16
eng4	16
CONTACTS	17
Contact details	17
Telephones	17
Office hours	17
Address	17

SPECIFICATIONS

Basic Information

Category: SHELBY

Sub Category: Cockpit

Model Year: 1995

Year Built: 1995

Country: United States

Vessel Top: Bimini Top

Fly Bridge: Yes

Cockpit: Yes

Dimensions

LOA: 46' 0" (14.02m)

Beam: 14' 6" (4.42m)

Min Draft: 3' 6" (1.07m)

Clearance: 14' 0" (4.27m)

MFG Length: 51' 9" (15.77m)

Speed, Capacities and Weight

Cruise Speed: 22 Kts. (25 MPH)

Max Speed: 29 Kts. (33 MPH)

Displacement: 29000 Pounds

Water Capacity: 120 Gallons

Holding Tank: 54 Gallons

Fuel Capacity: 420 Gallons

Accommodations

Total Cabins: 2

Total Berths: 2

Sleeps: 4

Total Heads: 2

Hull and Deck Information

Hull Material: Fiberglass

Engine Information

Engines: 2

Manufacturer: Caterpillar

Model: 3208

Engine Type: Inboard

Fuel Type: Diesel

DETAILED INFORMATION

Highlights

This high performance, low profile offshore motoryacht accommodates 4 in two private staterooms with 2 heads.

- Engines were rebuilt December 2020
- NEW July 2015 Kohler generator with 971 hours
- NEW September 2020 bottom paint
- NEW 2017 Raymarine GPS/Radar
- NEW 2017 Satellite KVH Tracvision
- NEW Clarion radio
- NEW September 2020 batteries
- NEW December 2020 (2) A/C units
- Rebuilt 2018 Jabsco spotlight
- NEW carpet in salon

Cockpit

- Dockside water connection
- Indirect lighting
- Large plex cabin door
- Self-draining cockpit
- Transom shower

Salon

- New carpeting in 2020
- New A/C units in 2020
- Breakfast bar with (2) stools
- Custom glass table
- Designer fabric & whitewashed Birchwood accents
- Direct & indirect lighting
- Duplex outlet 110V
- (2) occasional chairs
- Premium carpeted with padding
- Recessed Italian halogen lighting w/dimmers
- Sleeper sofa
- Stereo
- Storage cabinets - port

- TV
- Upgraded transformers & isolated battery packs to operate cabin lights

Galley

- Coffee maker
- Custom cabinets
- Customsink
- Duplex outlet 110V
- Indirect lighting
- Large storage cabinets
- Microwave oven
- Pantry w/basket storage
- Refrigerator & freezer
- Stove 2-burner electric
- Waste receptacle

Forward Stateroom

- Bi-fold privacy door
- Deck hatch access
- Decor package
- Direct & indirect lighting
- Duplex outlet 110V
- Hanging locker w/automatic light
- Head access
- Port lights w/screens
- Queen size berth w/storage
- Storage cabinetHead
- Clothesline - retractable
- Direct/indirect lights
- Door mounted mirror - full length
- Duplex outlet 110V
- Exhaust vent
- Vacuflush head
- Mirrored over cabinet
- Towel rack
- Vanity w/sink

Aft Stateroom

- Bi-fold privacy door
- Cedar lined storage & TV cabinets
- Decor package
- Direct & indirect lighting
- Large aft window with curtains
- Love seat with storage
- Queen size berth w/base storage
- Sliding plex door to aft cockpitHead
- Direct & indirect lighting
- Door mounted mirror - full length
- Duplex outlet 110V
- Exhaust vent
- Vacu-flush head
- Mirrored over cabinet
- Tub/shower with sliding door

Flybridge and Navigation

- Helm seat with storage
- Companion seat w/storage
- Hard top sport arch
- Raymarine GPS/Radar (1) 12" E125, (1) 9" A97
- (2) engine room cameras CAM50
- Raytheon auto pilot
- Jabsco spotlight
- Standard Horizon VHF radio
- KVH Tracvision 3 satellite
- Clarion radio AM/FM/CD
- Anchor windlass Lemar Pro Series 1000

- (2) hour meters
- Compass
- Dual trumpet horn
- Navigation lights

Hull and Deck

- New bottom job in 2020
- Spotlight 7" remote
- Shore power 50/50 amp
- Trim tabs
- Bow pulpit with roller & deck pipe

- Deck hatch
- Ladder - swing down
- Molded flybridge steps
- Rub rail w/SS striker
- Swim platform - custom molded
- Thru-bolted hardware
- Heavy duty underwater gear
- Windlass - automatic w/150' chain

Mechanical

- Twin Caterpillar 3208 engines 435 hp, Hours: 2,011 & 2,022
- Engines rebuilt 2020
- Air conditioner 32,000 BTU reverse cycle - (2) units
- Aluminum fuel tanks
- Battery switches (2)
- Main & house batteries replaced 2020
- Bilge pumps w/auto float switch
- Converter
- Diamond plate floor panels
- Engine room insulation
- Systems alarms
- Kohler 8.0 kw generator completely gone thru with new battery in 2020M-9EK0ZD / 971 hours
- Synchronizer
- Water heater - 11 gallon w/exchanger
- Water tight accessory plug
- Fire extinguisher - automatic Halon

Canvas

- Flybridge enclosure
- Windshield cover
- Cockpit snap-in carpet

Exclusions

Owner's personal belongings.

Disclaimer

The Company offers the details of this vessel or yacht in good faith but cannot guarantee or warrant the accuracy of this information nor warrant the condition of the vessel. A buyer should instruct his representatives, agents, or his surveyors, to investigate such details as the buyer desires validated. This vessel or yacht is offered subject to prior sale, price change, or withdrawal without notice.

PHOTOS

Bow-2



Deck Lounge-2



Saloon-1



Saloon-3



Saloon-2



Galley-5



Galley-3



Galley-2



Galley-1



Galley-4



Master-1



Master-2



Master-3



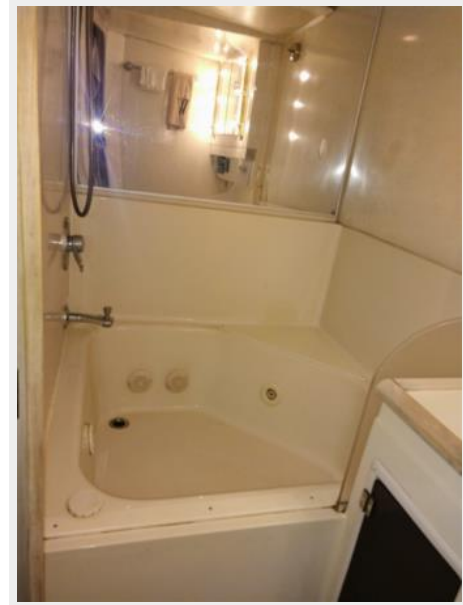
Master-4



Master Head-1



Master Head-2



Fwd Head



Fwd Strm-1



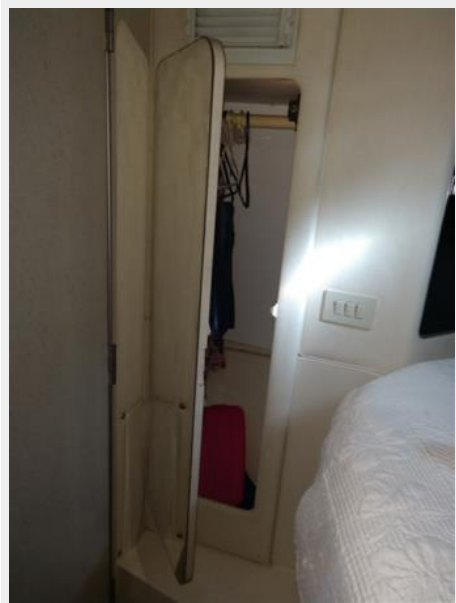
Fwd Strm-2



Fwd Strm-3



Fwd Strm-4



eng1



eng2



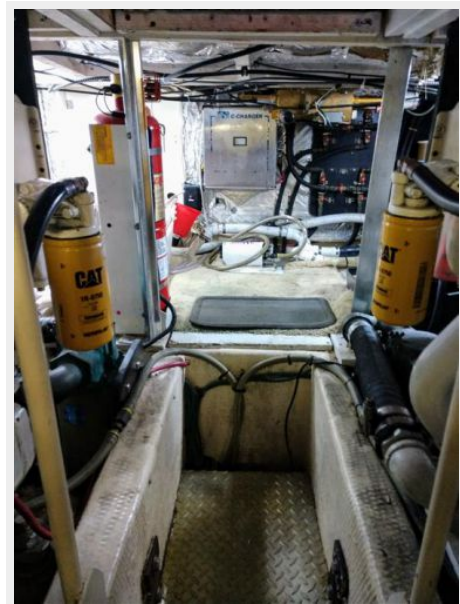
eng3



eng4



eng5



CONTACTS

Andrey Shestakov, leading yacht broker of the sales department of Shestakov Yacht Sales Inc. Shestakov Yacht Sales Inc., the official representative of the Miami/Fort Lauderdale FL headquarters.

Contact details

Email: andrey@shestakovyachtsales.com

Web: shestakovyachtsales.com/en/

Telephones

USA: +1(954)274-4435

Office hours

Monday – Saturday: **9:00 - 21:00** EDT

Sunday: **closed**

Address



Harbour Towne Marina, 850 NE 3rd St,
STE 213, Dania, FL 33004