

## QUALITY TIME — VIKING



**Судостроитель:** VIKING

**Год постройки:** 2004

**Модель:** Катер для спортивной рыбалки

**Цена:** **ЦЕНА ЯХТЫ ПО ЗАПРОСУ**

**Местонахождение:** Dominican Republic

**Длина общая:** 65' 0" (19.81m)

**Ширина:** 19' 3" (5.87m)

**Крейс. скорость:** 30 Kts. (35 MPH)

**Макс. скорость:** 36 Kts. (41 MPH)

Купить **Quality Time — VIKING** а также выбрать подходящую вам яхту из нашего каталога яхт вам поможет опытный яхтенный брокер Андрей Шестаков. На сегодняшний день компания **Shestakov Yacht Sales Inc.** имеет большое количество яхт в собственном списке продаж, а также тесно сотрудничает со всеми крупными яхтенными производителями по всему миру.

Для того чтобы купить яхту **Quality Time — VIKING** а также проконсультироваться по любому вопросу связанному с покупкой, продажей, чартером яхт позвоните по телефону **+7(918)465-66-44**.

# ОГЛАВЛЕНИЕ

ОГЛАВЛЕНИЕ	2
ХАРАКТЕРИСТИКИ	4
Основная информация	4
Размеры	4
Скорость, вместимость и масса	4
Размещение	4
Корпус и палуба	4
Информация о двигателе	5
ПОДРОБНОЕ ОПИСАНИЕ	6
Quality Time	6
Исключения	13
Отказ от ответственности	13
ФОТОГРАФИИ	14
2831	14
2840	14
0530	14
0531	14
0534	14
0535	14
0537	15
0540	15
0565	15
0561	15
0612	15
0614	15
0616	16
0623	16
0629	16

---

0636	16
2794	16
2793	16
2804	17
2795	17
2807	17
2806	17
2812	17
2821	17
2830	18
2824	18
2838	18
<b>КОНТАКТЫ</b>	<b>19</b>
Контактная информация	19
Телефоны	19
Время работы	19
Адрес	19

---

# ХАРАКТЕРИСТИКИ

## Основная информация

**Тип судна:** Катер для спортивной рыбалки

**Модельный год:** 2004

**Год постройки:** 2004

**Страна:** Dominican Republic

**Верх:** Enclosed

## Размеры

**Длина общая:** 65' 0" (19.81m)

**Ширина:** 19' 3" (5.87m)

## Скорость, вместимость и масса

**Крейс. скорость:** 30 Kts. (35 MPH)

**Макс. скорость:** 36 Kts. (41 MPH)

**Вместимость воды:** 360 Gallons

**Вместимость сточного бака:** 200 Gallons

**Объем топливного бака:** 2000 Gallons

## Размещение

**Всего кают:** 4

## Корпус и палуба

**Материал корпуса:** Fiberglass

**Комплектация корпуса:** Monohull

**Цвет корпуса:** White

## Информация о двигателе

---

**Двигатели:** 2

**Производитель:** MTU

**Модель:** 16V2000 M91

**Тип двигателя:** Inboard

**Тип топлива:** Diesel

---

# ПОДРОБНОЕ ОПИСАНИЕ

---

## Quality Time

---

The sensible choice: tremendous value in one of the most spacious layouts ever offered by Viking in a 65' class Enclosed Bridge Convertible. The 65' Viking with it's obvious huge salon and enclosed flybridge for entertaining guests does not stop there with 4 spacious staterooms and 4 heads below; owners and guests alike will be pampered.

Crew stateroom aft with direct access to the standup well organized engine room is not only functional, but also very accommodating work space.

This particular 65' is powered with what could arguably be the best engine package ever, offered in a production life from 2004 to 2015. The MTU 16V 2000 M91 @ 2030 hp will deliver a 30 knot cruise with efficient fuel burn. The cruise speed varies due to fuel load with Viking packing in over 2000 gallons into this beast.

The current owner underwent a complete bottom job in Novemeber of 2020 including prop speed, new cutlass bearings, hull compound and wax.

- Large Comfortable very functional U-Shaped Sofa with lift up storage below and storage in armrests
- 40" Samsung Pop-Up TV on actuator
- Cabinet storage forward of TV
- stereo system
- Teak Hi/Lo table with Moppa Burl inlay and storage below
- Spiral staircase to enclosed flybridge
- Electrical panel with start/stop for both gen sets
- Custom Amtico Cherry Teak flooring
- Custom wrapped valances and window treatments
- AC diffused through salon valances
- Silhouette Blinds
- Raised electric panel/slips service for easy access and visibility
- 

## GALLEY, DINETTE AND COMPANIONWAY

- U-Shaped dinette with teak table top
- Storage cabinets above dinette

- Stainless Steel sink with garbage disposal
- Sharp Microwave oven
- Storage cabinets above galley forward with deep slide out doors
- Amtico teak and holly flooring
- (4) Burner surface mount electric cooktop
- Washer and dryer in companionway
- Teak grab rails starboard to companionway
- Exhaust fan
- Electrical sub panel
- Central Vac
- (4) Sub-Zero under counter refrigerators
- (2) Sub-Zero under counter refrigerated freezers
- Under counter cabinet storage forward in galley
- Water tank gauge
- Large pantry-storage with shelving forward of galley
- Remote switch for water maker
- Custom granite counter top with OG edge
- Trash compactor
- Custom rod storage in pantry forward of galley

## MASTER STATEROOM

Master Stateroom is mid ship to port. It features an athwartship king size bed with storage below , a private head with stall shower, huge hanging locker and storage drawers.

- King size bed with storage underneath
- flat screen TV
- Overhead lighting
- 110 volt outlets
- Entry credenza with bank of drawer storage
- One piece custom frameless shower door in head
- His and Hers walk in cedar lined closets aft
- Teak nightstands with drawer storage
- Hardwired lamps
- Hanging closet with rod storage
- Upholstered headboard
- Phone outlet
- Custom wall paper in stateroom and head
- DSS receiver
- Amtico Cherry flooring

## MASTER HEAD

- Amtico teak and holly floor in head
- Brass faucet in head
- Dimmers on overhead lights
- Brass towel and rings in head
- One piece glass shower doors
- Custom wall covering
- Granite vanity countertop with Teak curved vanity face cabinet below
- Mirror backing around upper vanity cabinet
- 110 volt outlet
- 110 volt vent blower system

## VIP STATEROOM

The spacious VIP stateroom is all the way forward and features the very desirable queen island walk around bed. There is a private head with a stall shower, large hanging lockers and plenty of storage drawers.

- Lift up storage below guest berth
- Upper cabinet storage
- Custom wallpaper in stateroom and head
- Hanging locker and drawers
- Dimmers for overhead lighting
- flat screen TV

## VIP HEAD

- Brass shower fixtures in head
- Mirror ceiling in head
- Brass towel bars and rings in head
- Brass faucet in head
- Amtico teak and holly head flooring
- Custom Wall covering
- Granite countertop with Teak curved vanity face cabinet below
- Upper mirrored cabinet with mirror backing
- 110 volt outlet
- 110 volt vent blower system

## GUEST STATEROOM



The guest stateroom is located mid-ship to starboard.

- Upper and lower berth arrangement
- Custom wall covering
- Hanging locker with drawer below
- Private Access to Guest day head with Stall Shower
- TV

## GUEST HEAD

- Mirror ceiling in head
- Upper mirrored cabinet with mirror backing
- Brass towel bars and rings in head
- Brass faucet in head
- Custom Wall covering
- Amtico teak and holly floor in head
- Granite vanity counter top with Teak curved vanity face cabinet below

## CREW STATEROOM Or Fourth guest stateroom

The crew stateroom is aft and features upper and lower berths and a private head with stall shower. There is a private door from the head to the engine room for the crew to exit and enter their cabin giving the owner and guest's privacy.

- Oversized upper and lower bunks
- Cedar lined hanging locker
- Storage cabinets outboard along bunks
- Aircraft grade door to engine room from head
- Private access to adjoining head
- Custom wall covering
- TV

## CREW HEAD

- Amtico teak and holly floor in head
- Upgraded Corian in head
- Upper mirrored vanity cabinet with mirrored backing
- Fiberglass molded shower
- 110 volt outlet
- 110 volt vent blower system

---

## ELECTRONICS AND NAVIGATIONAL EQUIPMENT

- Furuno Navnet system
- Simrad AP 20 autopilot
- Bennett trim tabs
- JVC Stereo
- Icom VHF
- Side Power bow thruster
- ACR spot light
- Magnetic compass
- 

## COCKPIT AND FISHING EQUIPMENT

The cockpit is extremely spacious, and includes ample storage for a clean, organized fishing platform and mezzanine seating.

- Live well in sole
- Transom coaming with gate and with transom fish box
- (2) Glendinning cable masters
- Grab rails on haunch
- Large fish box
- Fresh and salt water wash downs
- Tackle storage
- Walk through transom door with gate
- Cockpit speakers
- Cockpit mezzanine
- Phone and cable inlets
- (2) 50 Amp power inlets
- Dockside water connection
- Fiberglass salon door
- Self Bailing cockpit
- Teak cockpit floor, covering boards and mezzanine
- triple spreader outriggers
- Center Rigger
- Eskimo Ice Machine with feed into the fish box
- Water Maker
- In-deck dunage box
- 

## FLYBRIDGE

- Air conditioning reverse cycle
- (2) Upgraded bench seats port and starboard on Teak cabinets with drawer storage below
- Teak Cocktail table
- Flat panel TV
- Spiral staircase on bridge
- Jumpseat with cushions on aft overhang
- Wipers with washers
- Quartz lights in overhang
- Custom single radar mast
- 
- Custom Amitco Cherry flooring
- Tinted glass windows
- Wet bar with refrigerator/icemaker
- L-Shaped sofa lounge with storage below
- helm wheel
- Aft docking station
- Exterior aircraft grade door
- Ladder to cockpit

## HULL AND DECK EQUIPMENT

- Fiberglass side thru hulls
- Oval exhaust outlets
- white hull color
- Prop pockets to reduce draft
- Awlgripped in all bilges
- Lewmar Ocean III windlass
- DC bow thruster
- Underwater lights stern
- Bow rail and pulpit
- Fresh water wash down in anchor locker
- Kiddie rail on side of deck house
- Teak Deak and Mezzanine

## ENGINE AND MECHANICAL

- Powered by MTU 16V2000M91's 2030 hp 1200 hrs
- CruisAir A/C
- Bilge pumps
- Engine room access to crews quarters
- External sea strainers for engine pick ups

- Fresh water manifold insulation system
- Racor fuel filters
- Nibral propellers
- Trim tabs
- Voltage stabilizer transformer
- MTU/DDC trolling valves
- Awlgrippped engine room
- Awlgrippped Brass through hulls
- white painted pumps
- Dockside water inlet to fill water tank
- 
- Pressurized water system
- Delta engine room vents
- Fire suppression system
- Fresh water supply in engine room
- Oil change line plumbed to cockpit and dockside insert
- Shelf over both generators
- Engine room crew door
- 21.5 KW Onan Generator with shelf above
- 27.5 KW Onan Generator with shelf above
- Gas-Water separators for both generators
- white painted fuel filters
- Fuel prime pumps for engines
- Mufflers
- Aqumet prop shafts
- 30 Gallon hot water heater
- Water maker
- Eskimo Ice Maker

## EXCLUSIONS

Owner's personal property

## VIKING 65 CONVERTIBLE MANUFACTURER'S OVERVIEW

American luxury sportfishing and cruising motoryacht builder Viking Yacht Company was founded in 1964. Today, this family-owned and -operated yacht company is a world leader in semi-custom fiberglass yacht production with over 4,000 boats delivered. To the passionate owners of these yachts, the word “Viking” is synonymous with “excellence”.

Like all Vikings, the 65 Convertible is built tough. Its large cockpit is spacious enough for multiple anglers to fish side by side without crowding, and features an integrated bait and tackle station. Storage is always optimized on a Viking. The flybridge has extra rod storage, plus a large

refrigerated drinks box. The spacious helm has plenty of pass-through room behind it for guests to move easily about. The main deck layout includes a salon and, one step up, a full galley and dinette. Below, the 65 Convertible has four staterooms, including two with large beds and two more with bunkbeds, along with four heads. The 65 Convertible EB offers the perfect combination of amenities for hardcore anglers and those who want to cruise in comfort.

## Исключения

---

При продаже яхты исключаются личные вещи владельца.

## Отказ от ответственности

---

Компания предоставляет описание судна или яхты добросовестно, но не может гарантировать точность этой информации, а также не ручается за техническое состояние. Покупатель должен проинструктировать своих агентов или оценщиков исследовать представленную информацию более подробно, по собственному желанию. Продажа судна или яхты, изменение цены или снятие с продажи будет происходить без предварительного уведомления.

# ФОТОГРАФИИ

2840



2831



0530



0531



0534



0535



0537



0540



0561



0565



0612



0614



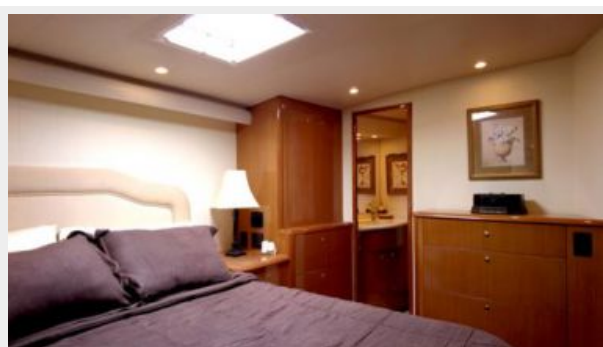
0616



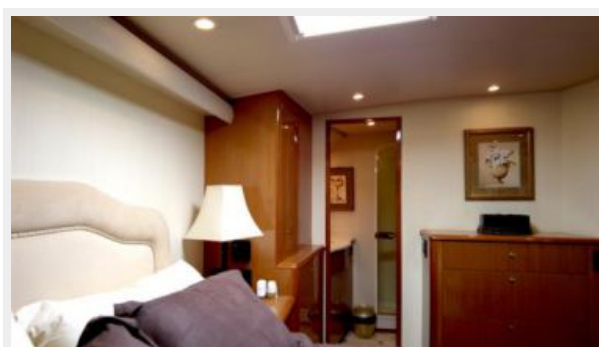
0623



0629



0636



2793



2794





2795



2804



2806



2807



2812



2821



2824



2830



2838



# КОНТАКТЫ

---

Андрей Шестаков (Andrey Shestakov) – ведущий яхтенный брокер отдела продаж яхт и судов компании Shestakov Yacht Sales Inc. Официальный представитель Shestakov Yacht Sales Inc. для русскоговорящих клиентов в центральном офисе компании в Майами/Форт Лодердейл/Флорида/США.

## Контактная информация

---

Email: [andrey@shestakovyachtsales.com](mailto:andrey@shestakovyachtsales.com)

Web: [shestakovyachtsales.com](http://shestakovyachtsales.com)

## Телефоны

---

Краснодарский край: **+7(918)465-66-44**

США, Майами, Флорида: **+1(954)274-4435**

## Время работы

---

Понедельник – Суббота: **9:00 - 21:00**  
EDT

Воскресенье: **Закрито**

## Адрес

---



Harbour Towne Marina, 850 NE 3rd St,  
STE 213, Dania, FL 33004