

HAUMANA — CUSTOM BUILT



Builder: CUSTOM BUILT

Year Built: 1986

Model: Catamaran

Price: PRICE ON APPLICATION

Location: French Polynesia

LOA: 119' 9" (36.50m)

Beam: 42' 3" (12.88m)

Max Draft: 6' 2" (1.88m)

Cruise Speed: 12 Kts. (14 MPH)

Max Speed: 14 Kts. (16 MPH)

Our experienced yacht broker, Andrey Shestakov, will help you choose and buy a yacht that best suits your needs **Haumana — CUSTOM BUILT** from our catalogue. Presently, at Shestakov Yacht Sales Inc., we have a wide variety of yachts available on our sale's list. We also work in close contact with all the big yacht manufacturers from all over the world.

If you would like to buy a yacht **Haumana — CUSTOM BUILT** or would like help answering any questions concerning purchasing, selling or chartering a yacht, please call **+1(954)274-4435**

TABLE OF CONTENTS

TABLE OF CONTENTS	2
SPECIFICATIONS	4
Basic Information	4
Dimensions	4
Speed, Capacities and Weight	4
Accommodations	4
Hull and Deck Information	5
Engine Information	5
DETAILED INFORMATION	6
General	6
Layout	6
Refits / Upgrades	6
Mechanics	7
Exclusions	7
Disclaimer	7
PHOTOS	8
Main	8
Front View	8
Night	8
Moorea Drone View	8
Haumana by night	8
Haumana by night	8
Walkaround Deck	9
Haumana - Bar & Lounge	9
Haumana - Lunch on deck 3	9
Haumana - Sun deck	9
Foredeck	9
Romantic Dining	9

Haumana - Bridge	10
Haumana - Lounge	10
Dining Room	10
Dining Room 2	10
Haumana - Panoramic Suite	10
Master	10
Haumana - Panoramic Suite	11
Haumana - Cabi	11
CONTACTS	12
Contact details	12
Telephones	12
Office hours	12
Address	12

SPECIFICATIONS

Basic Information

Category: Catamaran

Model Year: 2010

Year Built: 1986

Country: French Polynesia

Fly Bridge: Yes

Dimensions

LOA: 119' 9" (36.50m)

Beam: 42' 3" (12.88m)

Max Draft: 6' 2" (1.88m)

Speed, Capacities and Weight

Cruise Speed: 12 Kts. (14 MPH)

Cruise Speed Range: 1200

Max Speed: 14 Kts. (16 MPH)

Gross Tonnage: 478 Pounds

Water Capacity: 1320.86026 Gallons

Fuel Capacity: 4490.924884 Gallons

Fuel Consumption: 52.8344104 Gallons

Accommodations

Total Cabins: 14

Total Berths: 14

Sleeps: 28

Total Heads: 16

Captain Cabin: True

Crew Berths: 14

Crew Sleeps: 14

Hull and Deck Information

Hull Material: Aluminum

Deck Material: Aluminum

Hull Configuration: Catamaran

Hull Finish: Aluminum

Engine Information

Engines: 2

Manufacturer: Detroit Diesel

Model: 12V92TA

Engine Type: Inboard

Fuel Type: Diesel

DETAILED INFORMATION

General

Haumana (ex MV Reef Treck) has been built in Australia by Alufast in 1986.

After her first life operating as a cruise ship in Australian waters, she has been completely rebuilt in 1998 with a Garvin Mair Marine Design Pty Ltd design and started her operations as luxury cruise catamaran in French Polynesia.

Layout

Large Skylounge for up to 40 guests with ample deck space including outside bar

Mid deck distributing 10 double guests cabins, each with ensuite bathroom, and a front owner's suite with panoramic 120 degrees sea view

Main deck with Large dinning room, kitchen, laundry, 2 double guest cabins with ensuite bathroom, crew mess, galley, store room and cabins for cruise manager, laundry and restoration employees

Lower deck with engines and technical rooms, additional store and laundry rooms and all crew cabins (for up to 14 crew)

Refits / Upgrades

1998: Rebuilt in Australia

2005: Port Engine overhauled

2005: Port Watermaker (18 Tons / Day) replaced (new)

2007: Stb Engine replaced (new)

2007 Stp Auxiliary Engine replaced (new)

2010: Refit in Tahiti

2010: New Washers & Dryers (5 each)

2019 (April): Last Drydock

2019 (August) Bureau Veritas Survey

2019: Hull and superstructure repainted / Interior Upgrades

2020 (Sept): New Certificates issued by French Authorities

Mechanics

Twin Detroit Diesel 12V92TA engines, 1000 HP each

Twin Cummins 135kW Auxiliary engines

Twin Onan Generators 135kva, 12/240/415V each, 50Hz

New 2020 A/C Split Systems

Twin Reverse Osmosis Watermakers (18 Tons / Day)

Fuel consumption : Approx. 200 l/h for both engines @ 12 kn cruising speed and additional 50 l/h for both generators

Exclusions

Owner's personal belongings.

Disclaimer

The Company offers the details of this vessel or yacht in good faith but cannot guarantee or warrant the accuracy of this information nor warrant the condition of the vessel. A buyer should instruct his representatives, agents, or his surveyors, to investigate such details as the buyer desires validated. This vessel or yacht is offered subject to prior sale, price change, or withdrawal without notice.

PHOTOS

Main



Front View



Moorea Drone View



Night



Haumana by night



Haumana by night



Haumana - Bar & Lounge



Walkaround Deck



Haumana - Lunch on deck 3



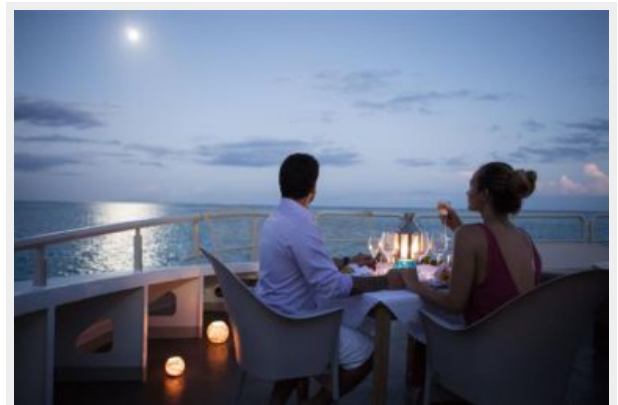
Haumana - Sun deck



Foredeck



Romantic Dining



Haumana - Bridge



Haumana - Lounge



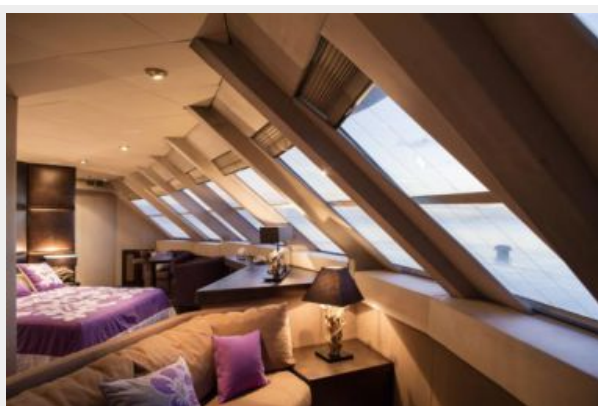
Dining Room



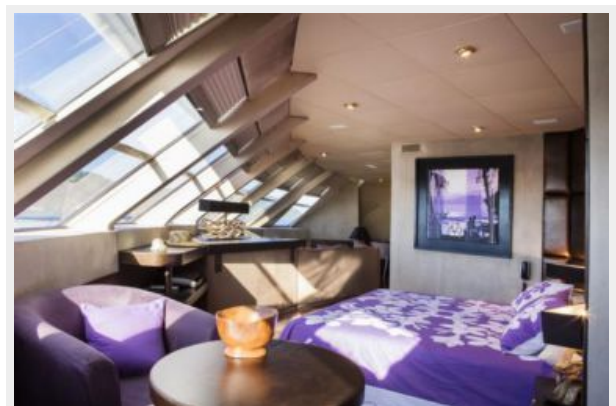
Dining Room 2



Haumana - Panoramic Suite



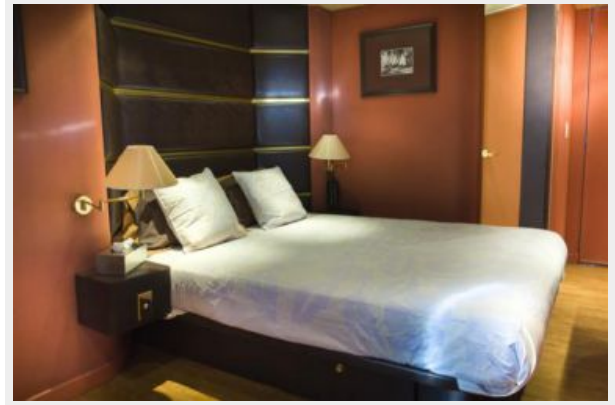
Master



Haumana - Panoramic Suite



Haumana - Cabi



CONTACTS

Andrey Shestakov, leading yacht broker of the sales department of Shestakov Yacht Sales Inc. Shestakov Yacht Sales Inc., the official representative of the Miami/Fort Lauderdale FL headquarters.

Contact details

Email: andrey@shestakovyachtsales.com

Web: shestakovyachtsales.com/en/

Telephones

USA: +1(954)274-4435

Office hours

Monday – Saturday: **9:00 - 21:00** EDT

Sunday: **closed**

Address



Harbour Towne Marina, 850 NE 3rd St,
STE 213, Dania, FL 33004