

ISLAND SAFARI — PACIFIC MARINER



Builder: PACIFIC MARINER

Year Built: 2003

Model: Motor Yacht

Price: PRICE ON APPLICATION

Location: United States

LOA: 65' 0" (19.81m)

Beam: 17' 3" (5.26m)

Max Draft: 5' 0" (1.52m)

Cruise Speed: 22 Kts. (25 MPH)

Max Speed: 25 Kts. (29 MPH)

Our experienced yacht broker, Andrey Shestakov, will help you choose and buy a yacht that best suits your needs **ISLAND SAFARI — PACIFIC MARINER** from our catalogue. Presently, at Shestakov Yacht Sales Inc., we have a wide variety of yachts available on our sale's list. We also work in close contact with all the big yacht manufacturers from all over the world.

If you would like to buy a yacht **ISLAND SAFARI — PACIFIC MARINER** or would like help answering any questions concerning purchasing, selling or chartering a yacht, please call **+1(954)274-4435**

TABLE OF CONTENTS

TABLE OF CONTENTS	2
SPECIFICATIONS	6
Overview	6
Basic Information	6
Dimensions	6
Speed, Capacities and Weight	6
Accommodations	7
Hull and Deck Information	7
Engine Information	7
DETAILED INFORMATION	8
INTRODUCTION	8
VESSEL WALKTHROUGH	8
ACCOMMODATIONS	8
AFT DECK	9
SALON	9
GALLEY	10
MASTER STATEROOM	10
MASTER HEAD	11
VIP STATEROOM	11
VIP HEAD	11
GUEST STATEROOM	12
GUEST / DAY HEAD	12
CREW QUARTERS	12
DECK EQUIPMENT	12
ELECTRICAL EQUIPMENT	13
FLYBRIDGE	13
FLYBRIDGE ELECTRONICS	14
PILOTHOUSE & LOWER HELM ELECTRONICS	14

CONSTRUCTION	15
2019 - 2021 SERVICE	15
ENGINE ROOM AND MECHANICAL EQUIPMENT	15
RECENT UPGRADES	16
EXCLUSIONS	20
Exclusions	20
Disclaimer	20
PHOTOS	21
AFT DECK	21
AFT DECK	21
AFT DECK	21
AFT DECK	21
SALON	21
SALON	21
SALON	22
SALON	22
SALON	22
SALON	22
SALON	22
GALLEY	22
GALLEY	22
GALLEY	23
GALLEY	23
PILOTHOUSE	23
PILOTHOUSE / SETTEE	23
PILOTHOUSE / SETTEE	23
PILOTHOUSE / HELM	23
PILOTHOUSE / HELM	24
PILOTHOUSE / HELM	24
MASTER STATEROOM	24

MASTER STATEROOM	24
MASTER STATEROOM	24
MASTER STATEROOM	24
MASTER HEAD	25
MASTER HEAD	25
VIP STATEROOM	25
VIP STATEROOM	25
VIP HEAD	26
VIP STATEROOM	26
GUEST STATEROOM / PORT	26
GUEST STATEROOM / PORT	26
GUEST / DAY HEAD	27
GUEST STATEROOM / PORT	27
FLYBRIDGE	27
FLYBRIDGE / HELM	27
FLYBRIDGE / HELM	27
FLYBRIDGE / HELM	27
FLYBRIDGE / HELM	28
65_pacific_mariner_island_safari__flybridg20	28
FLYBRIDGE / SEATING	28
FLYBRIDGE / SEATING	28
CREW QUARTERS	28
CREW QUARTERS	28
ENGINE ROOM	29
ENGINE ROOM	29
ENGINE ROOM	29
ENGINE ROOM	29
BOW	29
BOW	29

SWIM PLATFORM	30
SWIM PLATFORM	30
OTHER PROFILE	30
OTHER PROFILE	30
AFT VIEW	31
OTHER PROFILE	31
CONTACTS	32
Contact details	32
Telephones	32
Office hours	32
Address	32

SPECIFICATIONS

Overview

ISLAND SAFARI is one of the most highly maintained and upgraded 65' Pacific Mariners on the market, with no expense spared to keep her in true proper yacht condition throughout. Any serious prospective 65' Pacific Mariner Buyer should not miss inspecting this truly cruise ready yacht!

Basic Information

Category: Motor Yacht

Sub Category: Flybridge

Model Year: 2003

Year Built: 2003

Country: United States

Vessel Top: Hardtop

Fly Bridge: Yes

Dimensions

LOA: 65' 0" (19.81m)

Beam: 17' 3" (5.26m)

Max Draft: 5' 0" (1.52m)

Speed, Capacities and Weight

Cruise Speed: 22 Kts. (25 MPH)

Max Speed: 25 Kts. (29 MPH)

Water Capacity: 285 Gallons

Holding Tank: 110 Gallons

Fuel Capacity: 1100 Gallons

Accommodations

Total Cabins: 3

Sleeps: 6

Total Heads: 4

Captain Cabin: True

Crew Cabin: 2

Hull and Deck Information

Hull Material: Fiberglass

Hull Configuration: Modified V-Hull

Engine Information

Engines: 2

Manufacturer: Caterpillar

Model: 3406E

Engine Type: Inboard

Fuel Type: Diesel

DETAILED INFORMATION

INTRODUCTION

ISLAND SAFARI is one of the most highly maintained and upgraded 65' Pacific Mariners on the market, with no expense spared to keep her in true proper yacht condition throughout.

Fully-serviced Caterpillar 3406E 800 HP Diesels, and with 20kW and 12kW Northern Lights Generators, Naiad Stabilizers, Hydraulic Bow Thruster, new Dometic 60,000 BTU Chilled Water A/C System, including new Air Handlers, 4-Station ZF Electronic Controls with Thruster Controls, 800GPD Watermaker and 12' 2011 Nautica Tender with 60HP Yamaha.

Any serious prospective 65' Pacific Mariner Buyer should not miss inspecting this truly cruise ready yacht!

VESSEL WALKTHROUGH

Upon boarding the vessel from the Aft Deck, you enter the Salon from stainless steel framed sliding glass doors. Immediately you will be surrounded by windows, with incredible views and lots of light. The Salon is both comfortable and elegant with beautiful interior woodwork throughout. To port is an L-shaped sofa with storage below, and is complimented with a custom high-gloss electric base coffee/dining table. To starboard are two occasional chairs with an end table in between, and forward is the built-in entertainment center with a wet bar. Going up 4-steps to the Pilothouse level is the extremely spacious Galley, with lots of recent upgrades to port and a staircase leading up to the Flybridge. To starboard is custom buffet cabinetry for dish and serving ware storage. Forward of the Galley is the comfortable forward facing L-shaped dining settee with a Burlled Cherry wood table along with complete Pilothouse lower helm station. There are two full-size Stidd helm chairs, as well as sliding doors port and starboard for quick access to the walk-around side decks. Forward to starboard is a wide semi-spiral staircase, leading to the Owner and Guest accommodations. At the base of the steps is the combination Day/Guest Head with a stall shower. Moving forward in the forepeak is the VIP Stateroom, featuring a centerline Queen Bed and en-suite bath to starboard. Moving back aft to port is the twin Guest Stateroom, complete with a private entrance to the head and shower. All the way aft is the Master Stateroom with centerline King bed, en-suite bath, two large "his and hers" hanging lockers, a settee seating area to port with storage drawers beneath, and desk/storage area to starboard.

ACCOMMODATIONS

The 65' Pacific Mariner features three Owner and Guest staterooms, each with en-suite baths. The Crew Quarters are aft with two single berths, air conditioning, a sink, head, and lots of

storage.

AFT DECK

The 65' Pacific Mariner has the most versatile and usable Aft Deck of any yacht in her size range. Through the port aft gate you can easily step on to the large fiberglass Swim Platform, equipped with deep, spacious internal Lazarette storage accessed through two hatchways.

From the starboard end of the Aft Deck settee, you find a staircase to enter the Crew's Quarters, Laundry Center and Engine Room.

- Full Eisenglass enclosure for Aft Deck and Flybridge
- Aft Deck sunscreen
- Sliding glass and stainless steel framed door to Salon
- Recently upholstered Sunbrella settee
- Stainless steel handrails with safety gate
- Teak Deck
- Walk-around side decks
- In-deck storage lockers on Aft Deck for cleaning supplies, and large storage locker on Swim Platform for boarding ladder and large tenders
- Aft Deck controls and docking station, engine start/stop and thruster controls
- Hot/cold fresh water shower on port Aft Deck
- Dockside water hook-up with pressure valve
- Twin 50Amp Retractable 100' shore cords
- Dockside cable hookup
- New LED Courtesy and dimmable overhead lighting
- Freshwater wash-down
- Fill for Diesel and water, starboard and port
- Portside pump-out for waste

SALON

The Salon is beautiful and extremely comfortable with its rich satin finished Cherry woodwork and elegant furnishings. The Burlwood Salon table rises electronically, from coffee table height, to formal dining table height, transforming a casual area to a formal dining setting within minutes.

- 2019: Huber Optics ceramic window glaze installed on all Salon and Pilothouse windows, reducing heat and UV by 90%
- 2017: New Carpeting throughout
- New Bluetooth Media and Entertainment System in Salon
- New Samsung 37" LED HDTV, concealed behind flip-up cherry panel
- New Wi-Fi System
- New Apple TV Module with custom remote

- Wet bar with custom cabinets for crystal storage
- Summit Wine cooler
- Summit Beverage cooler
- Stainless steel sink
- Custom liquor bottle storage
- Digital controls for room temperature
- Separate music zones located in Galley, Flybridge, Salon and Aft Deck
- Hunter Douglas Duette blinds
- 2018: Interior woodwork refinished and stained where needed

GALLEY

The Gourmet Galley is complete with full-sized appliances, solid surface countertops, and an abundance of drawers, cabinets, and counter space.

- Solid surface Corian countertops
- GE Side-by-Side Stainless steel refrigerator and freezer with icemaker, 22 cu.ft.
- Samsung 5-Burner electric stove with full-size oven
- GE Profile Stainless steel full-size microwave convection oven
- KitchenAid full-size stainless steel dishwasher
- KitchenAid stainless steel trash compactor
- Stainless steel double sink with Insinkerator garbage disposal
- New Delta single-lever faucet with pull-out sprayer
- Skylight/vent hatch with shade and roll-up screen
- Teak and Holly flooring
- Digital controls for room temperature
- Custom buffet for dish storage
- Customized dishware storage are with (2) dish sets
- Hunter Douglas Duette blinds

MASTER STATEROOM

- King-size walk-around centerline bed with new comforters
- Cherry desk on starboard side, with bookshelves, 6-drawer storage and chair
- Settee sitting area with storage drawers beneath, on port outboard wall
- Insignia 30" Flatscreen Smart TV
- Bluetooth Connection to internal room speakers for music
- DVD and CD Player
- Central vacuum outlet outside of the Master Companionway
- Digital controls for room temperature
- Built-in drawers under berth
- Stainless portholes with screens

- New LED Overhead lights with dimmer
- (2) Cedar-lined and lighted “his and hers” hanging lockers
- Full-length dressing mirrors on doors
- Hunter Douglas Duette blinds

MASTER HEAD

- Corian countertops and sink
- Head Hunter Royal Flush Freshwater Toilet System
- 3-Panel beveled glass mirror vanity with center storage
- Grohe single-lever faucet
- Tub and shower with sliding door
- Tempered glass shower door
- (2) AC Power outlets
- Power ventilation fan
- Stainless porthole with screen
- Towel storage cabinet with Corian top
- Pressure balanced shower valve
- Teak & Holly flooring

VIP STATEROOM

- Island Queen Berth with new comforter
- Insignia Flatscreen Smart TV
- Bluetooth Connection to internal room speakers for music
- Built-in drawers under berth
- Cedar-lined and lighted hanging locker
- Digital controls for room temperature
- (2) Stainless portholes with screens
- Overhead ventilation hatch with shade and screen
- En-suite Head

VIP HEAD

- Corian countertops and sink
- Head Hunter Royal Flush Freshwater Toilet System
- Panel, beveled glass mirror vanity with center storage
- Large stand-up shower with safety glass door
- Grohe single-lever faucet
- Stainless portlight with screen
- Ventilation fan

- AC Power outlet
- Pressure balanced shower valve
- Teak & Holly flooring

GUEST STATEROOM

- Twin berths new comforters
- Sharp 15" TV
- Bluetooth Connection to internal room speakers for music
- Stainless porthole with screens
- 3-Drawer center nightstand
- Built-in drawers under berths
- Large cedar-lined lighted closet
- Digital controls for room temperature

GUEST / DAY HEAD

- Corian countertops and sink
- Head Hunter Royal Flush Fresh Water Toilet System
- Ventilation fan
- Full stand-up shower with safety glass door
- Pressure-balanced shower valve
- Stainless steel port hole with screen
- AC Power outlet
- Teak and Holly flooring

CREW QUARTERS

- Air conditioning with digital controls
- Marine head with holding tank
- Ample storage compartments
- GE Over/under full-sized washer and dryer
- Sink with faucet
- Digital climate controls
- Connections present for TV and media
- Access to Engine Room
- Note: If Crew Quarters are not needed, this area can easily be converted into air/conditioned workshop, storage or dive gear area

DECK EQUIPMENT

- Windlass with new Rohcna 121lb. anchor (2019)
- 250' High test anchor chain
- Stainless steel anchor mount
- Fresh and saltwater wash-downs on Foredeck (in Anchor Locker)
- Custom Sunbrella sun pad cushions on Foredeck with handrails
- New Air horn pump (2019)
- 316 Stainless steel bow rail
- 316 Stainless steel walk-around handrails
- Starboard forward wing controls start/stop and thruster
- Port and starboard boarding gates
- Fuel fills port and starboard
- Holding tank port deck pump-out
- Spare stern anchor
- (2) Anchor snubbers
- Anchor locker freshly painted (2020)
- (10) New Dock lines and fender covers (2019)
- 8-Person Viking Life Raft, repacked and certified by Solution One (2019)

ELECTRICAL EQUIPMENT

- Northern Lights 20kW Generator (5900 hrs.) with PTO for Bow Thruster, fully serviced (2021)
- Northern Lights 12kW Gen (1837 hrs.) fully serviced (2021)
- (2) 50 Amp 100' Shore cords on Glendenning Cablemasters
- 50 Amp Voltage-boosting Transformer
- AC Power distribution panel
- 24 Volt DC Breaker panel
- 12 and 24 Volt DC Battery chargers
- Heavy-duty battery switches
- New Generator (2) AGM Batteries (2018)
- New Start and House (4) AGM Batteries (2019)
- Bonding System
- Extra 50ft. Shore Power extension cord

FLYBRIDGE

The Flybridge can be easily accessed from the interior staircase between the Salon and Galley or from the Aft Deck ladder. The Pilothouse has doors to port and starboard, allowing the helm crew easy access to the side decks during docking or anchoring maneuvers, or when hailing another boat. The spacious Bridge features a large seating area with dining table, Hardtop with custom Strataglass enclosures. Designed for entertaining, there is a 360-degree view for navigation.

- New Chest freezer on Bridge (10/2020)
- Fully-equipped Navigation Station
- 2011 Nautica 12' RIB with 60HP Yamaha (2020) – Total refurbish of all systems, full re-tube, electronics and full engine maintenance
- L-shaped settee with custom Sunbrella cushions
- Corian Tabletop, fold-down serving station
- New Kenyon Electric BBQ grill (2018)
- Nautical Structures 1500lb. Davit (2019) – Rebuilt and serviced with power boom and rotation
- Norcold Refrigerator
- (2) White Stidd helm chairs
- Pacific Mariner Hardtop
- Stainless steel Ship's wheel
- Overhead Halogen platform floodlights
- New LED Courtesy and overhead hardtop lighting
- Drink holders at Helm

FLYBRIDGE ELECTRONICS

- (2) Caterpillar Multi-function electronic displays
- ZF Marine Electronic controls
- (1) Furuno 12" Navnet VX2 multi-function display with 64mi. radar, GPS, Chart Plotter and Depth Sounder
- (1) New Garmin GPSMap 8612SX Chart Plotter/GPS 2020, with Premium Bluechart G-3 Vision Charts and Depth Sounder
- Eastern Seaboard and Florida Gulf Coast
- New Vesper XB-6000 Watchmate AIS System
- Simrad Autopilot, new control head (2018)
- Furuno Digital display for wind, depth and speed
- 6" Ritchie Compass
- ACR Spotlight controls
- NEW Naiad Stabilizer control unit (2018)
- Stabilizers fully serviced, new seals (2019)
- New Naiad Hydraulic Bow Thruster controls (2018)
- Engine Stop/start buttons
- New Horn and NAV lights, with new LED lights (2019)

PILOTHOUSE & LOWER HELM ELECTRONICS

- (2) Caterpillar multi-function electronic display
- ZF Marine Electronic controls
- (1) Furuno NAVNET with multi-function display with 64 mile radar, GPS chart plotter and

depth sounder

- (1) New Garmin GPSMap 8612SX Chart Plotter/GPS 2020, with Premium Bluechart G-3 Vision Charts Eastern Seaboard & Florida Gulf Coast, also includes Depth Sounder
- New Vesper XB-600 Watchmate AIS System
- Simrad Autopilot, new control head (2019)
- Furuno Digital display for wind, depth and speed
- 6" Ritchie Compass
- ACR Spotlight controls
- New Naiad Stabilizer control (2018)
- Naiad Hydraulic Bow Thruster controls (2018)
- Engine start/stop buttons
- Windshield wiper and washers, rebuilt and serviced (2018)
- Water gauge and updated tank sensors (2018)
- Fire Boy Engine Shut-Down System – Certified (2020)
- Flatscreen Monitor for laptop HDMI connectivity (2018)
- Engine and Aft Deck cameras displayed in flatscreen monitor
- New Horn, Hydraulic pump and operations (2018)
- Bilge and sump pump controls

CONSTRUCTION

- Fiberglass Hull
- Vacuum-bagged Airex foam coring used above waterline
- Airex-cored stringers encapsulated in Fiberglass
- (3) Watertight bulkheads constructed with 2" thick Divinycell
- Steamlined molded outlet for Bow Thruster

2019 - 2021 SERVICE

- New bottom paint
- Shafts and props removed, reconditioned and rebalanced (2021)
- New Shaft bearings installed
- Engine alignments performed
- Full service to Stabilizers
- Spare shaft seals put on shafts

ENGINE ROOM AND MECHANICAL EQUIPMENT

The Engine Room is full stand-up height and very easy to move around in. Pride in ownership is reflected in the condition of the mechanical space. You can easily get around both main engines for easy service and inspection.

Equipment includes:

- Twin Caterpillar 3406E DITA 800hp each with 3285 hours as of 4/15/2021. Fully-serviced with all heat exchangers, coolers, belts, sea water pumps, hoses, clamps, zincs, impellers, oil and filters completed by Ring Power (\$54,500 with repair orders and receipts). Continued servicing of engines and generators (2021)
- Engine Room and engines recently detailed (2021)
- Twin Disc Marine Gears (1.92:1) – fully serviced (2021)
- Dual Racor fuel filter for main engines and generators - removed and cleaned (2021)
- Sea Strainers for main engines, generators, and air conditioning intakes; serviced or replaced (2019)
- NAIAD Stabilizers (4.5 sq. ft. fins) PTO on port engine - serviced with new seals during 2019 haul-out
- NAIAD 25hp Hydraulic Bow Thruster PTO on 20kW Generator
- Aquamet 2.5" Propeller Shafts removed - tested and realigned (2019)
- Dripless shaft and rudder seals
- Heavy-duty bronze struts with new bearings – replaced (2019)
- Power-assisted Hydraulic steering with new ram installed – entire Steering System serviced (2019)
- Cast bronze rudders with stainless steel posts
- Sea Recovery 800 GPD Watermaker with fresh water flush – Active with new filtration, control card and relay (1/2021)
- 110 Volt Freshwater pump 60 PSI
- Dometic 60,000 BTU Chilled water Air Conditioning System with Reverse Cycle Heat, main chiller recently replaced, with various upgrades throughout system, new raw water pump installed and system descaled and (2) new air handlers installed (2020)
- 30 Gallon hot water heater with engine coolant heat exchanger
- (2) 550 Gallon Aluminum fuel tanks (self-leveling) with sight gauges painted in Imron located on the forward bulkhead port & starboard
- Reverso Oil Change System for main engines and generators
- Underwater engine exhaust with vectored cowls, with double-density sound foam, with barrier tiles in Engine Room and strategic locations throughout insulation on engine mufflers and piping, 3M Thinsulate for acoustic and thermal insulation, generator sound shields installed on secondary isolation mounts; separating mufflers on generator with underwater discharge, air conditioning water discharged under water; silencers on air conditioning ducts; all pumps and motors installed on secondary isolation mounts; isolation bulkhead between master and guest stateroom, sound absorbing pads under carpets; aluminum fuel tanks, coated with IMRON
- Central Vacuum System

RECENT UPGRADES

Miscellaneous Upgrades:

- New Bottom paint; shafts and props removed, reconditioned and rebalanced, new bearings installed; engine alignments performed and full service to stabilizers (2019)
- 8-Person Viking Life Raft, repacked and certified by Solution One (2019)

Engine Room:

- Both Engine Alternators replaced (2021)
- Full engine service by Ring Power - \$54,500 (2019) & continued servicing of Engines and Generators (2021)
- Full Racors and fuel filters on Gensets and main engines (1/2021)
- Changed all oil on Gensets and main engines (1/2021)
- Changed Impeller and Thermostat on 12kW Generator along with ultrasonic cleaning of Heat Exchanger (2021)
- Changed belts on Gensets and fully assessed belts on main engines (2019)
- Changed transmission fluids for both main engines (2021)
- Repaired port exhaust riser and installed new exhaust crush sleeve on port and starboard engine (2018)
- Installed new Zincs on both main engines (2021) Installed (2) new AGM batteries for generators (2018)
- Installed (4) new AGM batteries for engine starts and house (2019)
- Replaced intake hose on watermaker (2018)
- Watermaker depicked and fully serviced (2020); added water filters and replaced leaking fittings
- Installed new bilge pumps and switches at all Hull positions and in platform (2018)
- Safety certification of Engine Room and Fire Extinguisher System (2019)
- Upgraded safety supplies and fire extinguishers at all locations (2020)
- Spare parts inventory (filters, hoses, impellers, etc.) collected for Gensets and main engines, watermaker and hot water tank
- Cleaned and painted engines and Engine Room area (2021)
- Tools

HVAC:

- Main A/C Chiller System replacement, new control board, new primary relay connector switch; reassessed and updated wiring for effective operations of entire system (2020)
- Tilted and secured AC drain pans and lines to drain effectively (2021)
- Installed new raw water A/C pump and all related intake/output hoses to chiller system and descaled (2020)
- Installed new Impeller for raw water pump to Chiller (2021)
- Galley A/C replacement, new complete Dometic chilled water air handler (2018)
- Master Cabin A/C replacement (2018)
- Forward Cabin A/C replacement; new control board, new CXP cable between board and control pad reinstalled touch pads (2018)
- Crew Quarters A/C replacement, new touch pad (2018)

Head:

- Replaced Macerator pump (11/2020)
- Forward head sink replacement, entirely new faucet assembly and plumbing lines (2018)
- Master Head shower repair, loop vent drainage hose system replaced and upgraded (2018)
- Installed new check valves on drainage for heads (2018)
- Installed new pump and switch in grey water holding tank (2018)
- Installed new sensor and wiring for water tank monitoring system (2018)
- Revised plumbing of pressure pumps for freshwater supply to all sinks and heads (2018)

Electronics:

- New Cradle Point Cell Wi-Fi Booster (10/2020)
- New Smart TV in Master Stateroom and VIP Stateroom (10/2020)
- Installed new Autopilot Simrad display head at upper helm and water-tested full systems (2018)
- Installed new Stabilizer control panel on Bridge Helm and updated Pilothouse control panel (2018)
- Installed new starboard docking station throttle controls and assessed throttle control levers at all docking stations for operational consistency; rebooted system with factory counseling (2019) and in 2020 per the survey
- Installed new Bow Thruster controls on Bridge Helm Station, assessed all control positions (2018)
- Installed new Bow Thruster control card (2020)
- Installed new horn pump and updated operations of system (2018)
- Installed new LED Navigation Light System (2018)
- Installed new Cockpit & Engine Room cameras (2018)
- Installed new single-screen display monitor at Pilothouse Helm (cameras, etc.)
- Reviewed and refreshed operations for both Glendenning's; cleaned 100' power cords (2019)
- Installed new Media Center and various related components in Salon and all Staterooms (2019)
- Installed new Wi-Fi System (2019)
- Installed new Smoke and Carbon Monoxide detectors throughout
- Replaced (2) Furuno Navnet Systems with (2) new Garmin GPSMap 8612SX Chart plotters (2019)
- Installed new Vesper XB-6000 AIS unit and Garmin Card Reader

Interior and Exterior:

- Waxed and polished entire boat (2021)
- Installed new seals on port and starboard Pilothouse doors (1/2021)
- Installed new rollers and seals on Salon sliding door (1/2021)
- Installed Huber Optics Ceramic Window Glaze treatments for all main interior cabin windows (2018)

- Woodwork of interior refinished throughout and upgraded with new stain as needed (2018)
- Upgraded and replaced door locks, door hinges, drawer sliders and drawer locks (2018)
- Replaced seals for both hatchways on platform Lazarette (2018)
- Installed new wiper control switches and wiper blades at all positions; updated wiper washer system at all positions; assembled (1) entirely new wiper arm (2018)
- Replaced all exterior courtesy lights; updated ceiling lights with new LED's (2019)
- Replaced Salon, Galley, Pilothouse and Master Stateroom interior bulbs with new LED's (2019)
- Installed new freshwater connector interface panel for shore water (2018)
- Installed new anchor locker; freshwater wash-down system (2018); new rods in locker (1/2021)
- Repaired Dryer Vent System (2018)
- Installed new soft goods throughout (2018)
- Updated all lines, fenders and fender covers (2020)
- Re-keyed Boat and Crew Quarters (2020)
- Routine monthly maintenance of sup-surface hull, exterior decks, hull and interior

Davit & Dinghy:

- New Hydraulic RAM (10/2020)
- Davit overhauled; removed entire Hydraulic cylinder, repaired cylinder ram; replaced defective valve, replaced defective Hydraulic hose (2019)
- Dinghy – Re-tubed, full engine and systems maintenance (2020)
- Installed new battery and inline fuses at battery switch (2019)
- Installed new LED courtesy lights on console; replaced all LED Navigation lights and stern light (2018)
- Installed new horn assembly on console (2018)
- Installed new VHF radio (2018)
- Installed new Depth, temperature gauge and transducer (2018)
- Installed new Garmin Navigation unit (2018)
- Installed new Bimini Top (2018)
- Installed new Tender Cover (2018)
- Installed new stern deck cleats and updated other existing cleats (2019)
- Serviced 60HP Yamaha motor (2019)
- Installed new water pump impeller and related seals (2019)
- Installed new spark plugs and fuel filter (2019)
- Installed new water/fuel separator filter; supplied spare filter (2019)
- Changed lower unit oil (2019)
- Changed motor oil and filter (2019)
- Installed new Fire Extinguisher (2018)
- Installed new safety equipment, anchor and supplies (2018)
- Spare Prop, hub and fuel line (2020)

EXCLUSIONS

ISLAND SAFARI is a registered name and does not convey.

Exclusions are to include but are not limited to, all owner's personal items. A detailed list of exclusions will be provided at the time of sale, upon written request.

Exclusions

Owner's personal belongings.

Disclaimer

The Company offers the details of this vessel or yacht in good faith but cannot guarantee or warrant the accuracy of this information nor warrant the condition of the vessel. A buyer should instruct his representatives, agents, or his surveyors, to investigate such details as the buyer desires validated. This vessel or yacht is offered subject to prior sale, price change, or withdrawal without notice.

PHOTOS

AFT DECK



AFT DECK



AFT DECK



AFT DECK



SALON



SALON



SALON



SALON



SALON



SALON



GALLEY



GALLEY



GALLEY



GALLEY



PILOTHOUSE



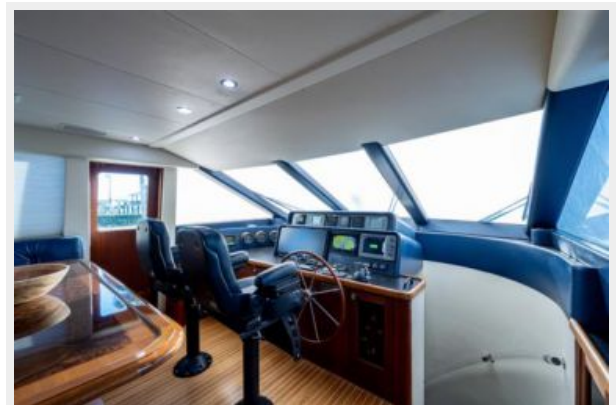
PILOTHOUSE / SETTEE



PILOTHOUSE / SETTEE



PILOTHOUSE / HELM



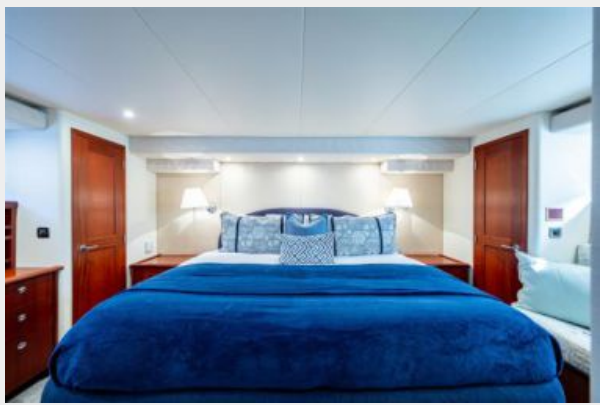
PILOTHOUSE / HELM



PILOTHOUSE / HELM



MASTER STATEROOM



MASTER STATEROOM



MASTER STATEROOM



MASTER STATEROOM



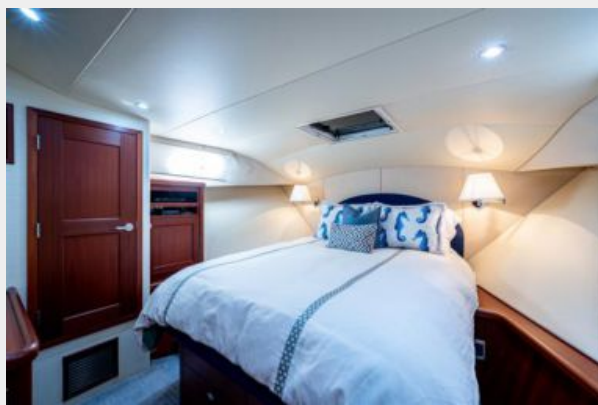
MASTER HEAD



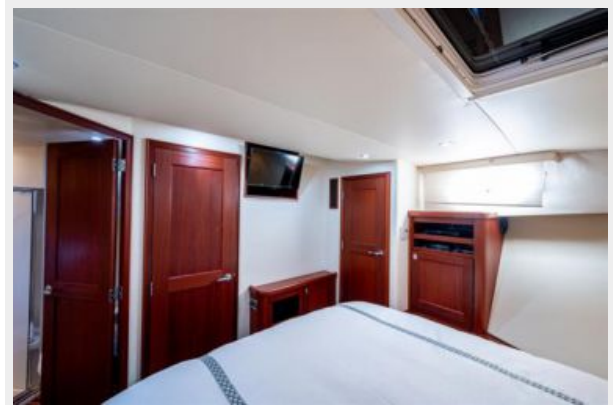
MASTER HEAD



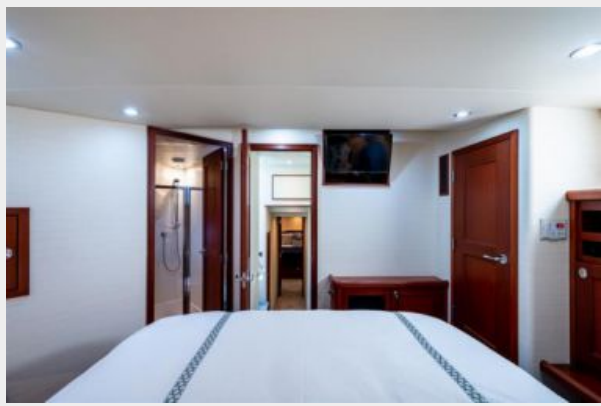
VIP STATEROOM



VIP STATEROOM



VIP STATEROOM



VIP HEAD



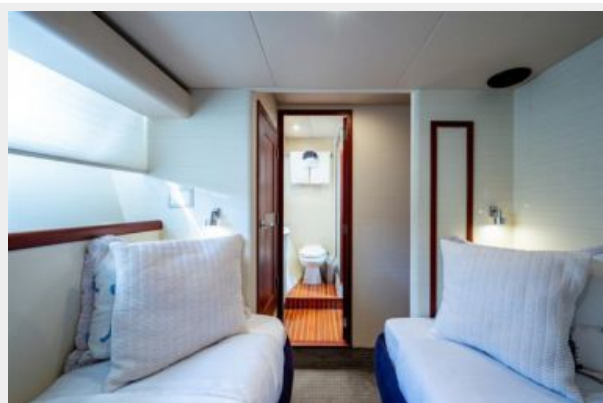
GUEST STATEROOM / PORT



GUEST STATEROOM / PORT



GUEST STATEROOM / PORT



GUEST / DAY HEAD



FLYBRIDGE



FLYBRIDGE / HELM



FLYBRIDGE / HELM



FLYBRIDGE / HELM



FLYBRIDGE / HELM



65_pacific_mariner_island_safari_flybridg20



FLYBRIDGE / SEATING



FLYBRIDGE / SEATING



CREW QUARTERS



CREW QUARTERS



ENGINE ROOM



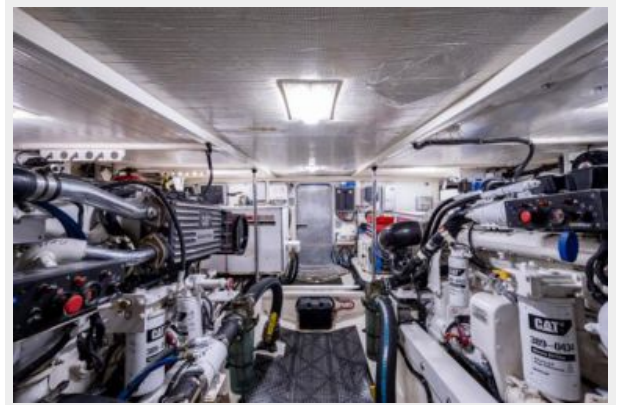
ENGINE ROOM



ENGINE ROOM



ENGINE ROOM



BOW



BOW



SWIM PLATFORM



SWIM PLATFORM



OTHER PROFILE



OTHER PROFILE



OTHER PROFILE



AFT VIEW



CONTACTS

Andrey Shestakov, leading yacht broker of the sales department of Shestakov Yacht Sales Inc. Shestakov Yacht Sales Inc., the official representative of the Miami/Fort Lauderdale FL headquarters.

Contact details

Email: andrey@shestakovyachtsales.com

Web: shestakovyachtsales.com/en/

Telephones

USA: +1(954)274-4435

Office hours

Monday – Saturday: **9:00 - 21:00** EDT

Sunday: **closed**

Address



Harbour Towne Marina, 850 NE 3rd St,
STE 213, Dania, FL 33004