

PLAN B — LAZZARA



Builder: LAZZARA

Year Built: 1995

Model: SHELBY

Price: PRICE ON APPLICATION

Location: United States

LOA: 76' 0" (23.16m)

Beam: 19' 1" (5.82m)

Min Draft: 4' 0" (1.22m)

Max Draft: 4' 6" (1.37m)

Cruise Speed: 22 Kts. (25 MPH)

Max Speed: 25 Kts. (29 MPH)

Our experienced yacht broker, Andrey Shestakov, will help you choose and buy a yacht that best suits your needs **Plan B — LAZZARA** from our catalogue. Presently, at Shestakov Yacht Sales Inc., we have a wide variety of yachts available on our sale's list. We also work in close contact with all the big yacht manufacturers from all over the world.

If you would like to buy a yacht **Plan B — LAZZARA** or would like help answering any questions concerning purchasing, selling or chartering a yacht, please call **+1(954)274-4435**

TABLE OF CONTENTS

TABLE OF CONTENTS	2
SPECIFICATIONS	7
Basic Information	7
Dimensions	7
Speed, Capacities and Weight	7
Accommodations	7
Hull and Deck Information	7
Engine Information	8
DETAILED INFORMATION	9
Basic Description	9
Highlights	9
Accommodations	10
Galley	11
Electronics and Navigation	11
Flybridge	11
Electrical and Mechanical	11
Deck and Hull	12
Refit and Upgrades	13
Mechanical Disclaimer	14
Disclaimer	14
Exclusions	15
Disclaimer	15
PHOTOS	16
Main Profile	16
Aerial View	16
Salon	16
Salon	16
Salon	16

Salon	16
Salon	17
Salon	17
Salon	17
Side Door	17
Side Door Starboard	17
Interior Detail	17
Dining Area	18
Galley	18
Galley	18
Wine Cooler	18
Master Stateroom	18
Galley Storage	18
Master Stateroom	19
Master Stateroom	19
Master Stateroom	19
Master Settee	19
Master Storage	19
Master Head	19
Master Head	20
VIP Stateroom	20
VIP Stateroom	20
VIP Head	20
Stateroom	20
Stateroom Head	20
Day Head	21
Laundry	21
Captain Cabin	21
Lower Helm	21

Lower Helm	21
Lower Helm	21
Lower Helm Electronics	22
Garmin	22
ISIS Computer	22
Radar	22
Upper Helm Electronics	22
Upper Helm	22
Instruments	23
EPIRB	23
Flybridge	23
Flybridge	23
Flybridge	23
Flybridge	23
Helm Area Settee	24
Helm Chairs	24
Helm Chairs	24
Flybridge BBQ	24
Flybridge Side	24
Lounge Area	24
Lounge Area	25
Lounge Area	25
Windlass	25
Anchor	25
Bow Area	25
Bow Area	25
Windshield	26
Bow Lounge	26
Bow Port	26

Bow	26
Logo	26
KVH	26
Side Port	27
Port Side	27
Side Port	27
Starboard Side	27
Stern Sitting	27
Stern Area	27
Stern Table	28
Stern	28
Stern Garage	28
Stern Garage	28
Engine Room Detail	28
Engine Room	28
Engine Room	29
Port Engine	29
79 Starboard Engine	29
80 Stabilizer Controller	29
81 Chargers	29
82 Controls	29
83 Exhaust Starboard	30
84 Oil Change	30
85 Thrusters	30
86 Panel	30
87 Panel	30
88 Generator	30
89 Generator	31
90 Extended Hydraulic Platform	31

91 Top View	31
92 Starboard Aft View	31
93 Starboard Side	31
CONTACTS	32
Contact details	32
Telephones	32
Office hours	32
Address	32

SPECIFICATIONS

Basic Information

Category: SHELBY

Sub Category: Pilothouse

Model Year: 1995

Year Built: 1995

Country: United States

Fly Bridge: Yes

Cockpit: Yes

Dimensions

LOA: 76' 0" (23.16m)

LWL: 66' 0" (20.12m)

Beam: 19' 1" (5.82m)

Min Draft: 4' 0" (1.22m)

Max Draft: 4' 6" (1.37m)

MFG Length: 75' 11" (23.14m)

Speed, Capacities and Weight

Cruise Speed: 22 Kts. (25 MPH)

Max Speed: 25 Kts. (29 MPH)

Displacement: 89000 Pounds

Water Capacity: 350 Gallons

Fuel Capacity: 1700 Gallons

Accommodations

Total Cabins: 5

Sleeps: 10

Total Heads: 6

Hull and Deck Information

Hull Material: Fiberglass

Engine Information

Engines: 2

Manufacturer: MTU

Model: 12V 183 TE

Engine Type: I/O

Fuel Type: Diesel

DETAILED INFORMATION

Basic Description

1995 Lazzara 76 Open Bridge

Owner found his next boat and wants this one sold and gone! Accepting Offers!

Turn key Lazzara from a meticulous owner. Owner is upgrading, is motivated and will listen to all offers.

The Lazzara 76 is a large volume boat with a very swallow draft that makes it easy to explore and cruise the Bahamas and Florida areas. With a cruising speed of 22 knots hopping from island to island is quick. **"Plan B"** is easy to handle from the lower or upper helm with bow and stern thrusters and new navigational equipment at both helms. A full walk-around deck makes docking easy and she is stabilized for extra comfort underway. A tender can be carried on the flybridge aft deck, which doubles as a spacious lounging area when the tender is in the water. The hydraulic lifting platform attached to **"Plan B"** standard swim platform serves as an extension of the swim platform, particularly useful for diving and other water sports, and can be used to carry additional watercraft as well.

The twin MTU engines with upgraded chrome package have low hours and have recently been completely rebuilt at a cost of \$230,000. The boat has less than 100 hours since the engines were rebuilt.

In 2013 **"Plan B"** went to the Lazzara factory where she underwent an extensive exterior and interior refit. From all new paint and outdoor enclosure, furniture, cushions and upholstery to interior dramatic new flooring, carpets, furniture, soft goods and all new galley appliances and counters. The current owner has spent over \$400,000 refitting the boat in 2019/2020. A list of upgrades and invoices are available.

Life on **"Plan B"** is enjoyed in a lovely, light-filled environment, kept fresh and organized with the aid of two laundry centers, central Vac and lots of storage.

Whether you are an owner/operator or run your boat with crew, **"Plan B"** has a split layout with the master and two guest staterooms aft and two cabins forward with an office area.

Highlights

- Lazzara, American-made, easy to maintain with proprietary Sea Check system
- Can be easily handled by owner/operator or by two crew
- Shallow draft; designed especially for the Bahamas and shallow cruising
- Two helms: interior main deck forward and flybridge
- Bow and stern thruster

- Full walk-around main deck
- Excellent condition due to intensive refit in 2013/2014 and 2019/2020
- New exterior paint at Lazzara factory, 2013
- All new appliances, floors, soft goods, furniture and blinds
- Engines full re-built in 2019
- Walkthrough

In 2013 and 2014 the boat underwent an interior refit and has a contemporary feel with new furnishings and amenities. This Lazzara was painted in late 2013 and upgrades galore on the exterior as well including custom handcrafted built-in solid wooden bars and solid built-in wooden cocktail tables on flybridge and decks. All new exterior designer soft furnishings were fitted; all tables and exterior seating have new storage covers including the large reclinable sun pads on the bow. In the salon and galley new flooring and all new wall coverings throughout the boat were installed in the refit. All new soft good, covers, headliners in 2020 during the second major refit.

Accommodations

This Lazzara features a five stateroom layout that sleeps 10, has five customized heads and one additional day head between salon and forward pilothouse. The master and both VIP staterooms are midship and accessed by a stairwell from the main salon. Crew or extra guest staterooms are forward and accessed via stairwell from the pilothouse. The Captains quarters feature a full-size bed; second forward stateroom has over/under beds. There is an adjoining generous office space that features a wraparound desk, a settee, and a second set of washer and dryer combo. All staterooms have en-suite heads, entertainment centers, climate controls, smoke detectors and fire blankets. The foyer to the master and VIP staterooms features a customized display area for artwork, large storage closets, and a washer and dryer and custom wine cooler. There are controls to select the lighting color, pattern and intensity for this area. The very large master stateroom features a king size bed with a new custom hand-crafted mattress. There are settees and nightstands on both sides of the bed and a full entertainment center trimmed in burl with TV/VCR, Stereo/CD player. A large walk-in closet is to starboard. The master head is to port and features marble floors and his and her sinks. There is a built-in Jacuzzi tub/shower. The Port Side VIP stateroom features a queen bed with a custom hand-crafted mattress, with nightstand and built-in entertainment center. The en-suite head compartment contains a sink and shower. The Starboard side VIP stateroom features twin berths entertainment center, en-suite head with sink and shower. The rooms are decorated with coordinating designer fabrics. The main salon features dual sofas to port and starboard. The integral entertainment center has a new TV, DVD and CD stereo system w/speaker selector and volume controls for various areas on the main deck. Dark hardwood flooring accents the white interior and contemporary design. The dining salon is forward of the main salon and features a custom cabinet above the bar and a custom dining table to accommodate six guests. There is a central vac accessed throughout the boat. A spacious large pilothouse with a settee and breakfast nook that seats four and a large leather sofa style bench seat at the helm with port and starboard entry doors giving access.

Galley

The U-Shaped galley is forward of the dining salon and to port. Updated in 2013 with all new appliances and flooring including:

- Corian counters
- Whirlpool full home size oven
- Kitchen Aide 23 cu/ft side by side refrigerator
- 4-Burner stove top
- Large GE Microwave
- Black and Decker Toaster

Electronics and Navigation

- All new electronics in 2013; both flybridge and pilothouse are equipped the same
- ISIS 700 Monitoring System (upper and lower station)
- 7212 Garmin GPS/Radar/Sonar/Weather and more (upper and lower)
- Simrad AP25 Autopilot (upper and lower)
- New radar in 2020
- Garmin VHF (upper and lower)
- Ritchie Compass (upper and lower)
- Engine Room camera
- ZF Mathers Electronic Controls

Flybridge

The flybridge features twin new in 2020 captain chairs at the helm followed on the portside by an L-Shaped settee with two custom teak tables. On the starboard side is a solid teak S-Curved bar/dining with three fixed bar stools, refrigerator/freezer and large stainless steel BBQ grill. Aft of the settee are lounges and chairs. All are newly added in the refit. New stereo and speakers throughout the upper, aft and forward decks with independent sound control. There's a power davit both port and starboard cleverly integrated into the superstructure. Hard top refinished and sealed in 2020.

Electrical and Mechanical

Critical ship's system function such as stabilizers and plumbing systems rely on compressed air. Two upgraded compressed air systems provide redundancy. All diamond plate on engine room sole and with pan and zoom for engine room monitoring. Central vacuum system with connections throughout the ship. Upgraded higher capacity fire extinguishing system for engine room.

- Custom Chrome package for main engines
- Twin MTU 12V183TE main engines
- Engines painted with Awlgrip
- Upgraded motor mounts
- ZF Transmissions Aquamet 2 1/2' shafts
- Micro Commander Electronic controls
- 4-Bladed props (recently reconditioned)
- Gyro Gale pneumatic stabilizers
- Upgraded 120v bow thruster powered by a 35HP Balmar motor
- Stern Thruster
- Glendenning cable master
- Oil transfer system
- Upgraded water maker
- Upgraded Freshwater pump and extension tank
- (2) Upgraded Higher Capacity Compressed Air Systems with Crossover
- Twin 25 kW Kilopak generators each generator can supply all of the ships electrical demands for full power backup
- Remote start for generators in pilothouse and on flybridge
- (2) 24 volt 120 amp C-Chargers, (1) 12 volt 60 amp C-Charger
- 100 Amp power cord
- New 40-gallon Water heater 2016
- New exhaust systems on both engines 2020
- New fire suppression system 2020

Deck and Hull

The hull and superstructure were completely refinished in the 2013 with Awlgrip "Snow White". The deep gloss finish shows off the yacht's beautiful lines.

- SS flag staff on bow
- Maxwell Nilsson windlass with ground tackle
- Foredeck sun pad is new in 2020 as are all soft goods furnishings on the exterior of the boat and there are many custom covers for deck equipment
- Fresh bottom paint (2020)
- Rudders remachined in 2020
- Marquip boarding ladder
- OCEAN LED underwater lights with color selector (installed 2014)
- Aft deck is overlaid in Teak and features built in seating with storage underneath
- Custom extendable teak table (new 2020)
- Ladder access to the flybridge
- Hatch to the bridge is a custom aluminum fabrication that opens to the side
- The transom steps both port and starboard match the aft deck
- On the transom are two pods

- The port side pod can accommodate dive gear with tank storage
- Access door to the engine room
- (6) Security cameras (5 new in 2015)
- Outlets for Micro commander remote with fail safe for docking controls
- Jabsco Searchlight
- Hydraulic swim platform (hydraulics renewed in 2020)
- New fire suppressing system (2020)
- CAT 5 wire and updated sound system throughout the boat
- KVH
- 50% of the external of the boat painted in 2020
- Salon new ceiling (2020)
- New headliners (2020)

Other Equipment:

- Central Vac system
- Air compression system will run toilets, sumps pumps, stabilizers and air tools
- Many spare parts, toys and fixtures (lights, bulbs, toilet inserts, handhelds, etc.)

Refit and Upgrades

- Complete refit on interior including all soft goods, walls and flooring; custom sofas, custom dining room table in salon 2013
- All new mattresses, hardwood floors and custom bedding 2013
- New stainless sink and faucet in galley 2014
- New trash compactor, oven, microwave and side by side stainless refrigerator in galley, new wine cooler in lower foyer area 2013
- New paint on entire exterior of boat, removed teak on forward decks, remove garage on flybridge apply new nonskid 2013/2014
- All new Garmin electronics - chart plotter GPS 7215, Sounder, Radar, VHF radio both helm stations 2013
- All new TV's throughout in 2013, and three new TV's with upgraded sound system in 2020
- All new canvas including helm cover, sunshade, cushion covers, table covers, BBQ cover, Isinglass, flybridge enclosure, flybridge settee and rear deck seating 2019/2020
- All new exterior cushions 2019/2020
- New Teak tables on flybridge 2013
- New Teak table on aft deck 2019
- New refrigerator on flybridge 2013
- New gas stainless grill on flybridge 2013
- New blinds in salon 2014
- New hydraulic rams for swim platform 2020
- New multicolor underwater light system 2013
- Props have been refurbished 2015

- New bottom paint 2020
- Day head has been replaced 2014
- New sound system throughout including exterior speakers 2020
- New sink fixtures in baths 2014
- New windshield cover 2014
- New compasses on bridge and helm station 2013
- New AC units (3), Additional AC unit for the salon
- (8) New batteries in engine room 2015
- Watermaker serviced 2016
- Flybridge Autopilot replaced 2014
- Rebuilt both hydraulic davits 2015
- Bridge ISIS unit added 2015
- ISIS system updated 2019
- (5) New monitoring cameras added 2015
- Custom tender cradle added on swim platform and flybridge 2015
- Stabilizers rebuilt and upgraded in 2019
- New window tinting 2016
- New A/C pump 2016
- New hot water heater 2016
- New forward washer and dryer 2016
- Windlass serviced including new foot controls 2016
- Stern thruster serviced 2016
- New extra A/C unit in the salon 2020
- New A/C unit in crew quarters
- Total rebuilt of both MTU engines at a cost of \$230,000. Less than 100 hours since rebuilt.
- New exhausts on both main engines just installed 2021
- Hull painted 50% in late 2020
- New generator pumps 2020
- Rebuilt of the hydraulic platform with new pumps and hoses 2020
- New system to drive the stabilizers 2019

Mechanical Disclaimer

Engine hours are as of the date of the original listing and are a representation of what the listing broker is told by the owner and/or actual reading of the engine hour meters. The broker cannot guarantee the true hours. It is the responsibility of the purchaser and/or his agent to verify engine hours, warranties implied or otherwise and major overhauls as well as all other representations noted on the listing brochure.

Disclaimer

The Company offers the details of this vessel in good faith but cannot guarantee or warrant the accuracy of this information nor warrant the condition of the vessel. A buyer should instruct his

agents, or his surveyors, to investigate such details as the buyer desires validated. This vessel is offered subject to prior sale, price change, or withdrawal without notice.

Exclusions

Owner's personal belongings.

Disclaimer

The Company offers the details of this vessel or yacht in good faith but cannot guarantee or warrant the accuracy of this information nor warrant the condition of the vessel. A buyer should instruct his representatives, agents, or his surveyors, to investigate such details as the buyer desires validated. This vessel or yacht is offered subject to prior sale, price change, or withdrawal without notice.

PHOTOS

Main Profile



Aerial View



Salon



Salon



Salon



Salon



Salon



Salon



Salon



Side Door



Side Door Starboard



Interior Detail



Dining Area



Galley



Galley



Wine Cooler



Galley Storage



Master Stateroom



Master Stateroom



Master Stateroom



Master Stateroom



Master Settee



Master Storage



Master Head



Master Head



VIP Stateroom



VIP Stateroom



VIP Head



Stateroom



Stateroom Head



Day Head



Laundry



Captain Cabin



Lower Helm



Lower Helm



Lower Helm



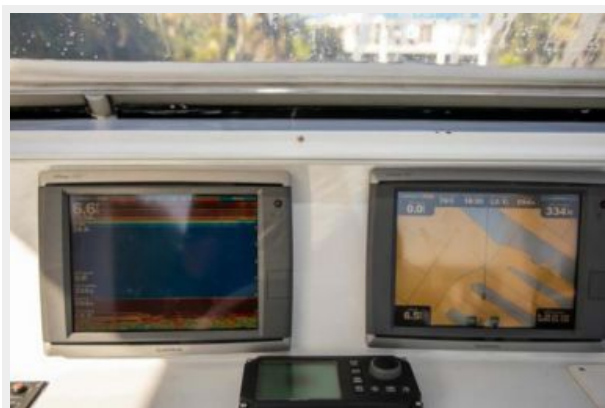
Garmin



Radar



Upper Helm



Instruments



EPIRB



Flybridge



Flybridge



Flybridge



Flybridge



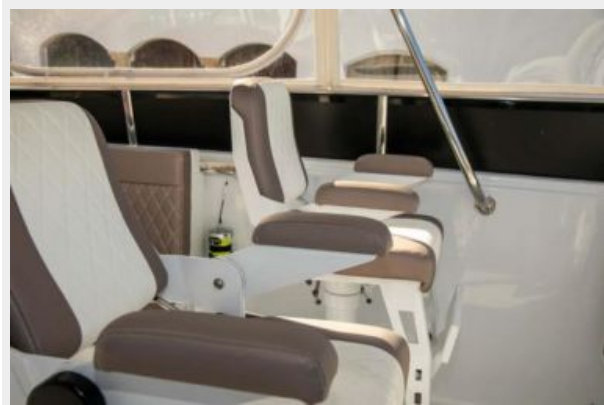
Helm Area Settee



Helm Chairs



Helm Chairs



Flybridge BBQ



Flybridge Side



Lounge Area



Lounge Area



Lounge Area



Windlass



Anchor



Bow Area



Bow Area



WindshIELD



Bow Lounge



Bow Port



Bow



Logo



KVH



Port Side



Side Port



Side Port



Starboard Side



Stern Area



Stern Sitting



Stern Table



Stern



Stern Garage



Stern Garage



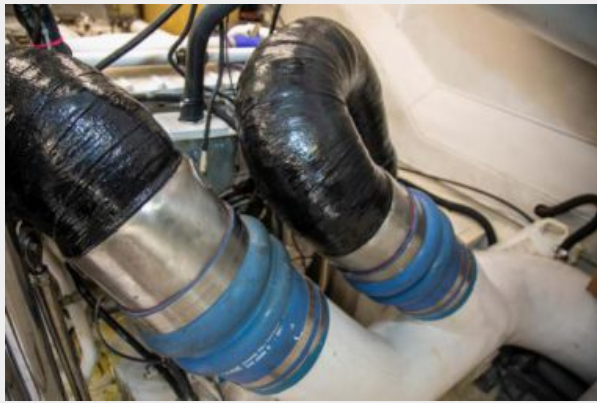
Engine Room Detail



Engine Room



Engine Room**Port Engine****79 Starboard Engine****80 Stabilizer Controller****81 Chargers****82 Controls**

83 Exhaust Starboard**84 Oil Change****85 Thrusters****86 Panel****87 Panel****88 Generator**

89 Generator



90 Extended Hydraulic Platform



91 Top View



92 Starboard Aft View



93 Starboard Side



CONTACTS

Andrey Shestakov, leading yacht broker of the sales department of Shestakov Yacht Sales Inc. Shestakov Yacht Sales Inc., the official representative of the Miami/Fort Lauderdale FL headquarters.

Contact details

Email: **andrey@shestakovyachtsales.com**

Web: shestakovyachtsales.com/en/

Telephones

USA: **+1(954)274-4435**

Office hours

Monday – Saturday: **9:00 - 21:00 EDT**

Sunday: **closed**

Address



Harbour Towne Marina, 850 NE 3rd St,
STE 213, Dania, FL 33004