

REFLECTIONS — BROWARD



Builder: BROWARD

LOA: 98' 0" (29.87m)

Year Built: 1982

Beam: 20' 0" (6.10m)

Model: Cruising Yacht

Price: PRICE ON APPLICATION

Location: United States

Our experienced yacht broker, Andrey Shestakov, will help you choose and buy a yacht that best suits your needs **Reflections — BROWARD** from our catalogue. Presently, at Shestakov Yacht Sales Inc., we have a wide variety of yachts available on our sale's list. We also work in close contact with all the big yacht manufacturers from all over the world.

If you would like to buy a yacht **Reflections — BROWARD** or would like help answering any questions concerning purchasing, selling or chartering a yacht, please call **+1(954)274-4435**

TABLE OF CONTENTS

TABLE OF CONTENTS	2
SPECIFICATIONS	6
Basic Information	6
Dimensions	6
Speed, Capacities and Weight	6
Accommodations	6
Hull and Deck Information	6
Engine Information	7
DETAILED INFORMATION	8
Vessel Walk Through	8
Salon	8
Dinette	9
Galley	9
Master Stateroom	9
Master Head	9
Guest Stateroom	9
Guest Stateroom 2	9
Helm	10
Flybridge	10
Electronics	10
Electrical System	11
Mechanical Equipment	11
Engine Room	11
Aft Deck	12
Cockpit	12
Decks	12
Brokers Remarks	12
Exclusions	13

Disclaimer	13
PHOTOS	14
1982 Broward 98 Motor Yacht	14
1982 Broward 98 Motor Yacht - Salon	14
1982 Broward 98 Motor Yacht - Salon	14
1982 Broward 98 Motor Yacht - Salon	14
1982 Broward 98 Motor Yacht - Galley	14
1982 Broward 98 Motor Yacht - Galley	14
1982 Broward 98 Motor Yacht - Galley	15
1982 Broward 98 Motor Yacht - Galley	15
1982 Broward 98 Motor Yacht - Dining Area	15
1982 Broward 98 Motor Yacht	15
1982 Broward 98 Motor Yacht	15
1982 Broward 98 Motor Yacht - Master Stateroom	15
1982 Broward 98 Motor Yacht - Master Stateroom	16
1982 Broward 98 Motor Yacht - Master Head	16
1982 Broward 98 Motor Yacht - Guest Stateroom	16
1982 Broward 98 Motor Yacht - Guest Stateroom	16
1982 Broward 98 Motor Yacht - Guest Stateroom	16
1982 Broward 98 Motor Yacht - Guest Head	16
1982 Broward 98 Motor Yacht - Laundry Room	17
1982 Broward 98 Motor Yacht - Crew Cabin	17
1982 Broward 98 Motor Yacht - Crew Cabin	17
1982 Broward 98 Motor Yacht - Crew Cabin	17
1982 Broward 98 Motor Yacht	17
1982 Broward 98 Motor Yacht	17
1982 Broward 98 Motor Yacht	18
1982 Broward 98 Motor Yacht	18
1982 Broward 98 Motor Yacht	18

1982 Broward 98 Motor Yacht	18
1982 Broward 98 Motor Yacht	18
1982 Broward 98 Motor Yacht	18
1982 Broward 98 Motor Yacht	19
1982 Broward 98 Motor Yacht	19
1982 Broward 98 Motor Yacht	19
1982 Broward 98 Motor Yacht	19
1982 Broward 98 Motor Yacht	19
1982 Broward 98 Motor Yacht	19
1982 Broward 98 Motor Yacht	19
1982 Broward 98 Motor Yacht	20
1982 Broward 98 Motor Yacht	20
1982 Broward 98 Motor Yacht	20
1982 Broward 98 Motor Yacht	20
1982 Broward 98 Motor Yacht	20
1982 Broward 98 Motor Yacht	20
1982 Broward 98 Motor Yacht	20
1982 Broward 98 Motor Yacht - Engine Room	21
1982 Broward 98 Motor Yacht	21
1982 Broward 98 Motor Yacht - Engine Room	21
1982 Broward 98 Motor Yacht - Engine Room	21
1982 Broward 98 Motor Yacht - Engine Room	22
1982 Broward 98 Motor Yacht - Engine Room	22
1982 Broward 98 Motor Yacht - Engine Room	22
1982 Broward 98 Motor Yacht - Engine Room	22
1982 Broward 98 Motor Yacht - Engine Room	22
1982 Broward 98 Motor Yacht - Engine Room	22
1982 Broward 98 Motor Yacht - Engine Room	22
1982 Broward 98 Motor Yacht - Engine Room	23
1982 Broward 98 Motor Yacht	23
1982 Broward 98 Motor Yacht	23
1982 Broward 98 Motor Yacht	23

1982 Broward 98 Motor Yacht	23
1982 Broward 98 Motor Yacht	23
1982 Broward 98 Motor Yacht	24
1982 Broward 98 Motor Yacht	24
1982 Broward 98 Motor Yacht	24
1982 Broward 98 Motor Yacht	24
1982 Broward 98 Motor Yacht	24
CONTACTS	39
Contact details	39
Telephones	39
Office hours	39
Address	39

SPECIFICATIONS

Basic Information

Category: Cruising Yacht

Sub Category: Cabin Cruiser

Model Year: 1982

Year Built: 1982

Country: United States

Fly Bridge: Yes

Dimensions

LOA: 98' 0" (29.87m)

Beam: 20' 0" (6.10m)

Speed, Capacities and Weight

Gross Tonnage: 115 Pounds

Water Capacity: 980 Gallons

Fuel Capacity: 5000 Gallons

Accommodations

Total Cabins: 3

Sleeps: 6

Total Heads: 1

Crew Cabin: 2

Crew Berths: 2

Crew Sleeps: 4

Crew Heads: 1

Hull and Deck Information

Hull Material: Aluminum

Engine Information

Engines: 2

Manufacturer: Scania

Model: D1 12 44M

Engine Type: Other

Fuel Type: Diesel

DETAILED INFORMATION

Vessel Walk Through

Timeless style, beautiful furnishings and comfortable seating throughout create an elegant and comfortable atmosphere.

Access to the Main deck is a few steps up on the Starboard side. The Pullman Style I shaped Galley is first followed by the formal dining area.

Continuing Aft you pass the steps that lead to the pilothouse with helm station and seating for guests.

As you continue Aft next you pass into the expansive Grand Salon boasting spectacular views, relax in comfort seated in the plush upholstered sofas.

The Master Suite and 2 Guest Cabins are accessed via the stairwell on the starboard side. Reflections interior layout sleeps up to 6 guests in 3 staterooms, including the Aft full beam Master Suite with Ensuite Head. 2 Twin Cabins each with 2 Beds and ensuite heads with private showers are just forward of the Master.

She is also capable of carrying up to 4 crew onboard in their own staterooms to ensure a relaxed luxury yacht experience.

Salon

- Expansive Salon with Elegant Décor
- Informal Circular table with chairs to Port
- Two Club Chairs with Table and Lamp to Starboard
- L Shaped Sofa Forward and to Port with Coffee Table and Two additional Club Chairs
- Samsung 50" TV (2019)
- RTI Master remote (2020)
- RTI XP-6S Advanced
- Forward Bulkhead Entertainment Cabinet with Dry Bar, Mirrored, with Glass storage
- Wet Bar with Under Counter Refrigeration
- Complete Entertainment System Including new Intellian Sat Tv and Daybright TV Screen
- Over sized Salon Windows to take in all the Magnificence.
- Private Stairway to leading to Master and Guest Quarters
- Ample Cabinet and Drawer Storage
- Uline under-counter refrigerator
- Pass through to Port and Starboard to Pilothouse and Private side doors

Dinette

- Private formal dining room with circular table and six chairs
- Built-in buffet cabinet

Galley

- I shaped and to Port and Forward of the Dining Area
- Kitchen Aide Full Size Refrigerator/ Freezer
- Gaggenau Convection Oven
- Jenn-Aire Glass Top Range
- Panasonic Microwave Oven
- Kitchen Aide Dishwasher
- Coffee Maker

Master Stateroom

- Full Beam Master
- Walk Around King Bed
- 26" Samsung TV
- Direct TV HD Box
- DVD Player
- Substantial Storage Large Hanging Lockers

Master Head

- Head
- Shower
- Heated towel racks

Guest Stateroom

- 2 Full Beds
- 24" Toshiba TV
- Storage
- Hanging lockers

Guest Stateroom 2

- 2 Full Beds
- 24" Toshiba TV
- Storage
- Hanging Lockers

Helm

- Full pilothouse
- Furuno Radar RDP-111
- Furuno Nav Net
- Transas Plotter
- Vespar Marine AIS
- Robertson AP 9MK11
- KVH Sat Phone

Flybridge

- (3) Mounted Captain's Chairs all with Exceptional View Lines
- Furuno FCV 582L Fathometer
- Furuno GP 32 GPS
- Furuno Nav Net Radar
- Furuno Nav Net Plotter
- Furuno Nav Net Fathometer
- Transas Plotter
- Robertson AP9MK11 Auto Pilot W/ Rudder Angle Indicator
- Sea 156 VHF
- Shipmate RS 8300
- Raytheon Hailer

Electronics

- Radar Furuno RDP 111
- Furuno FCV 582L Fathometer
- Furuno GP 32 GPS
- KVH sat Phone
- Furuno Nav Net Plotter/Fathometer/Radar
- Plotter, Transas
- Robertson AP 9MK11 autopilot with rudder angle indicator
- Sea 222 Single Side Band
- Camera system
- Raytheon Hailer

- Sea 156 VHF
- Shipmate RS 8300 VHF
- Data Marine Speed Indicator
- Simrad Wind Indicator

Electrical System

- 240 Volt AC System Breakers and Fuses
- (2) 50 Amp Atlas Shore Converters
- Northern Lights 32 KW Generator
- Northern Lights 20 KW Generator NEW 2018
- Battery chargers
- Stabaline Voltage regulators (4)
- NewMar DC Power Converter
- 12 VDC Breakers and fuses

Mechanical Equipment

- Naiad Stabilizers
- Hydraulic Bow Thruster (American)
- Water Maker
- Racor Filters
- Air Compressor
- Oil Change System
- Hot Water Tank Replaced 2018
- Added Sea Strainers to Generator Intakes 2018
- Washer and Dryer New 2018
- Davitt Rebuilt as New 2018
- (2) Washer and Dryer
- (1) Large Stand Up Freezers in Lazerette
- Stainless Steel Shafts

Engine Room

- REPOWERED IN 2003
- SKANIA D1 12 44M 675 HP
- Twin Disc Gearboxes 3.0:1
- Adjusted Valves and Replaced Injectors 2018
- New Exhaust System including Spray Rings 2018
- New Lagging Port and Starboard motors 2018
- Built In Automatic Halon System

- 55 Gallon Lube oil tank
- Mechanical Gauges in
- Diesel Heating System with Hot Water Heater

Aft Deck

- Teak Sole Aft Deck
- Built In Settee with Dining Table
- Overhead Lighting
- Full Enclosure New 2018
- Wet Bar With Seating
- Teak Stairs to Skiff Deck
- Port and Starboard Side Boarding Gates

Cockpit

- Custom Euro Style Extension
- Integrated Fore Deck Bench Seating with Storage
- (2) Integrated Foredeck Storage Deck Boxes
- Teak and Aluminum gangway

Decks

- Maxwell 4500 Anchor Windlass with 400' of 1/2" Chain
- 15' Novurania RIB with 60 HP Yamaha

Brokers Remarks

This Vessel has had (3) Refits 2002/2003, 2012, 2017/2018. Repowered in 2002/2003.

2017/2018 REFIT:

- Starboard motor was overhauled
- New 20 KW Northern Lights Generator
- Re-plumbed both Generators with Sea Strainers
- Main Engines Adjusted Valves
- Main Engines Replaced Injectors
- Main Engine New Exhaust System Including Spray Rings
- Main Engines Replaced all Lagging
- New System that Heats Water Off Diesel Furnace
- New Hot Water Tank

- New Washer and Dryer and Crews Quarters
- Rebuilt Davit As New
- Extensive Work On Electrical System Pulling Dead Wires and Refreshing Breakers
- Complete General Maintenance in Engine Room
- Custom Swim Platform. Designed, Fabricated and Installed
- Custom Stainless Steel Rails on Swim Platform
- Custom Stainless Steel Rails from Aft Deck To swimplatform
- Replaced Aluminum Rub Rail With Stainless Steel
- New FlyBridge Venturi
- New Bimini Top
- New Flybridge Enclosure
- All Exterior Teak stripped and varnished
- New Life Rafts
- Painted Bottom
- Tuned and Balanced Props
- Replaced Cutlass Bearings

Exclusions

Owner's personal belongings.

Disclaimer

The Company offers the details of this vessel or yacht in good faith but cannot guarantee or warrant the accuracy of this information nor warrant the condition of the vessel. A buyer should instruct his representatives, agents, or his surveyors, to investigate such details as the buyer desires validated. This vessel or yacht is offered subject to prior sale, price change, or withdrawal without notice.

PHOTOS

1982 Broward 98 Motor Yacht



1982 Broward 98 Motor Yacht - Salon



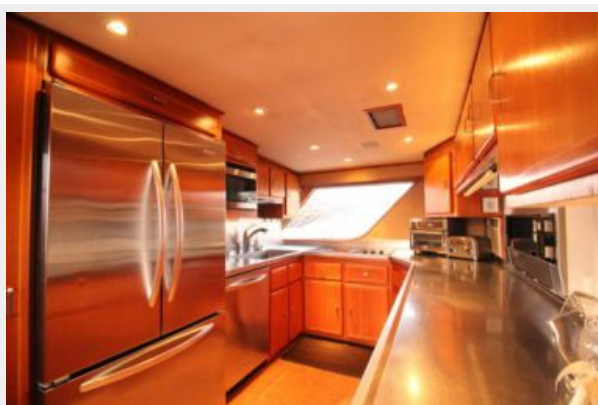
1982 Broward 98 Motor Yacht - Salon



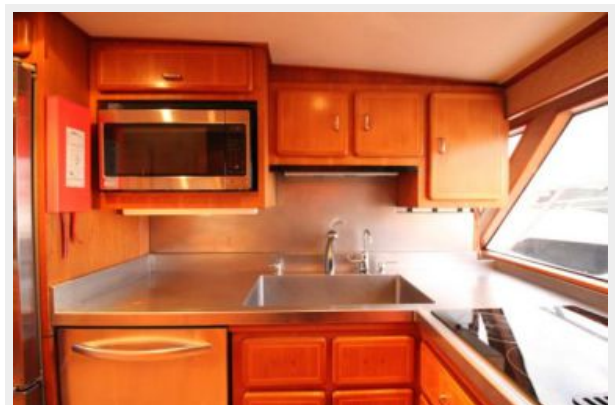
1982 Broward 98 Motor Yacht - Salon



1982 Broward 98 Motor Yacht - Galley



1982 Broward 98 Motor Yacht - Galley



1982 Broward 98 Motor Yacht - Galley



1982 Broward 98 Motor Yacht - Galley



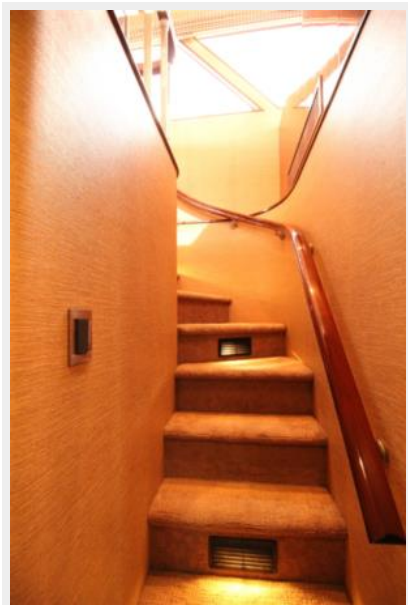
1982 Broward 98 Motor Yacht - Dining Area



1982 Broward 98 Motor Yacht



1982 Broward 98 Motor Yacht



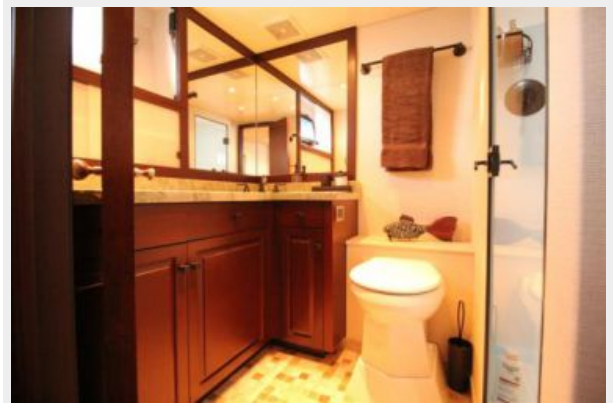
1982 Broward 98 Motor Yacht - Master Stateroom



1982 Broward 98 Motor Yacht - Master Stateroom



1982 Broward 98 Motor Yacht - Master Head



1982 Broward 98 Motor Yacht - Guest Stateroom



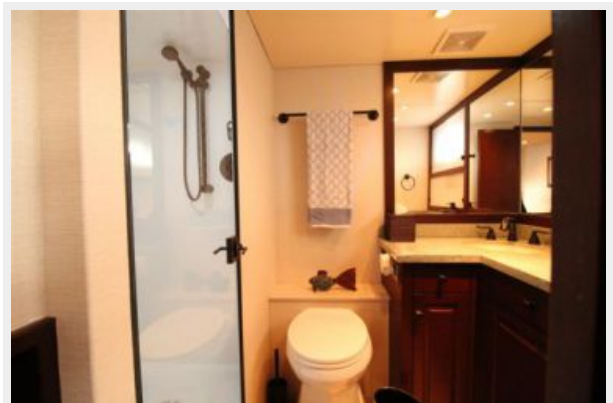
1982 Broward 98 Motor Yacht - Guest Stateroom



1982 Broward 98 Motor Yacht - Guest Stateroom



1982 Broward 98 Motor Yacht - Guest Head



1982 Broward 98 Motor Yacht - Laundry Room



1982 Broward 98 Motor Yacht - Crew Cabin



1982 Broward 98 Motor Yacht - Crew Cabin



1982 Broward 98 Motor Yacht - Crew Cabin



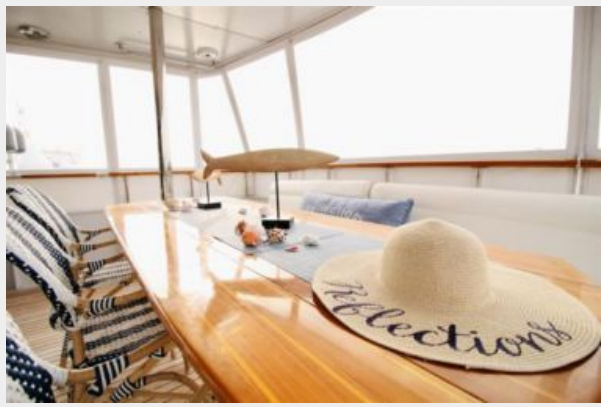
1982 Broward 98 Motor Yacht



1982 Broward 98 Motor Yacht



1982 Broward 98 Motor Yacht



1982 Broward 98 Motor Yacht



1982 Broward 98 Motor Yacht

1982 Broward 98 Motor Yacht



1982 Broward 98 Motor Yacht



1982 Broward 98 Motor Yacht



1982 Broward 98 Motor Yacht



1982 Broward 98 Motor Yacht



1982 Broward 98 Motor Yacht



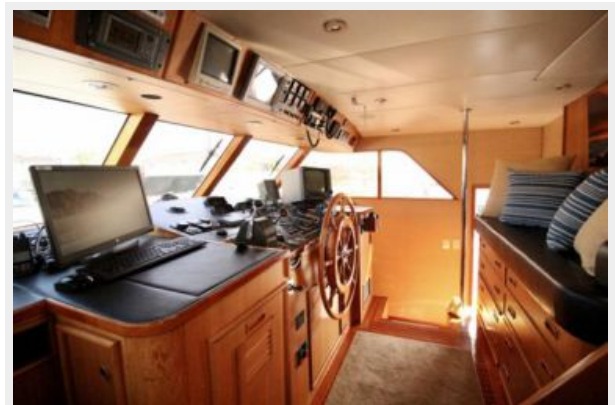
1982 Broward 98 Motor Yacht



1982 Broward 98 Motor Yacht



1982 Broward 98 Motor Yacht



1982 Broward 98 Motor Yacht



1982 Broward 98 Motor Yacht



1982 Broward 98 Motor Yacht



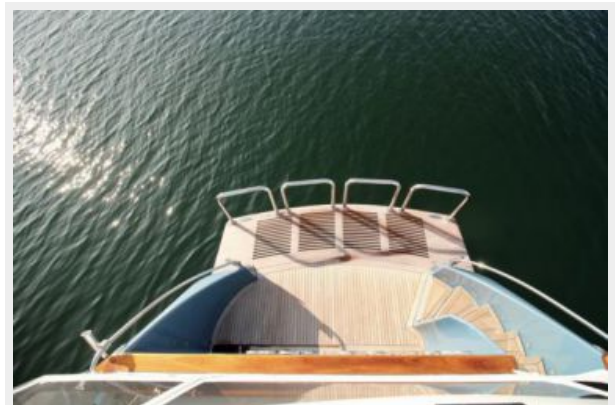
1982 Broward 98 Motor Yacht



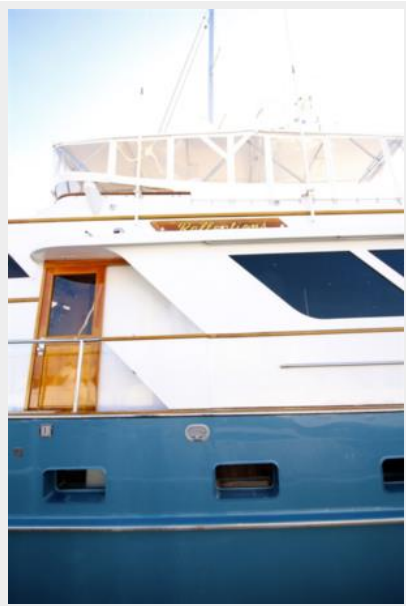
1982 Broward 98 Motor Yacht



1982 Broward 98 Motor Yacht



1982 Broward 98 Motor Yacht



1982 Broward 98 Motor Yacht - Engine Room



1982 Broward 98 Motor Yacht - Engine Room



1982 Broward 98 Motor Yacht - Engine Room



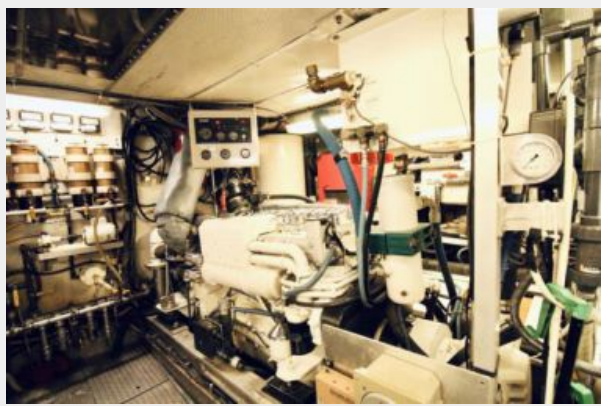
1982 Broward 98 Motor Yacht - Engine Room



1982 Broward 98 Motor Yacht - Engine Room



1982 Broward 98 Motor Yacht - Engine Room



1982 Broward 98 Motor Yacht - Engine Room



1982 Broward 98 Motor Yacht - Engine Room



1982 Broward 98 Motor Yacht - Engine Room



1982 Broward 98 Motor Yacht - Engine Room



1982 Broward 98 Motor Yacht



1982 Broward 98 Motor Yacht



1982 Broward 98 Motor Yacht



1982 Broward 98 Motor Yacht



1982 Broward 98 Motor Yacht



1982 Broward 98 Motor Yacht



1982 Broward 98 Motor Yacht



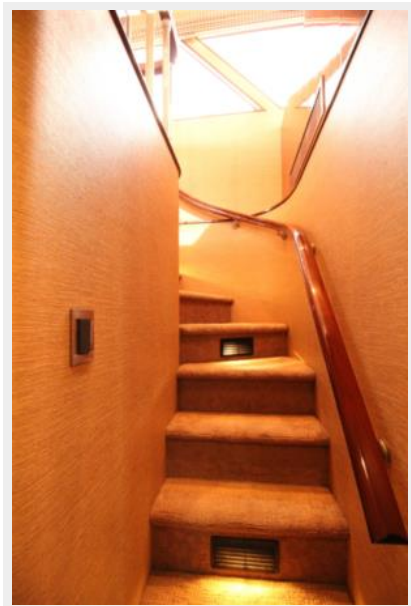
1982 Broward 98 Motor Yacht

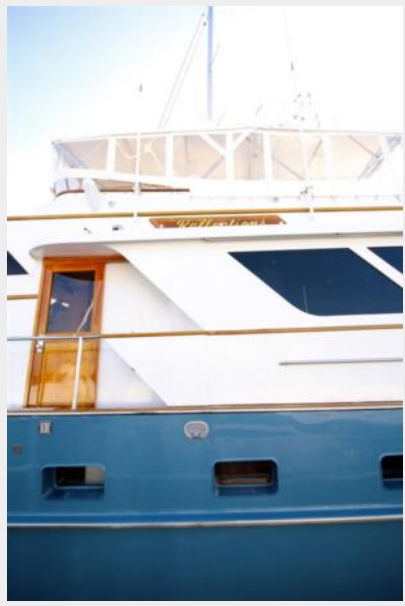


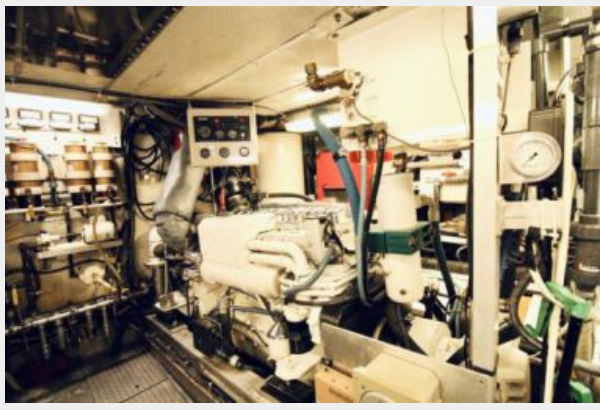
1982 Broward 98 Motor Yacht



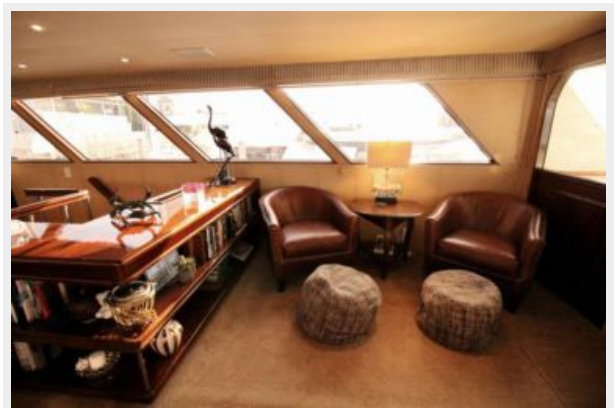
1982 Broward 98 Motor Yacht

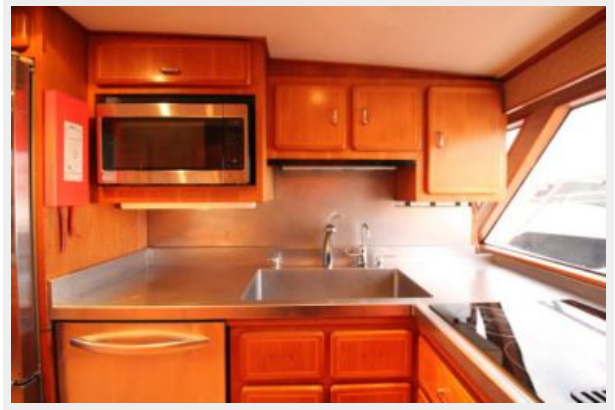
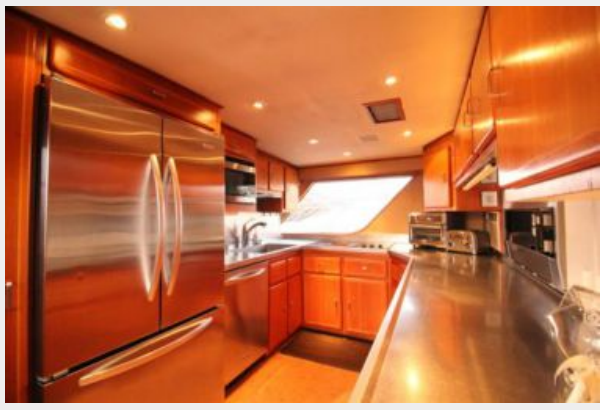


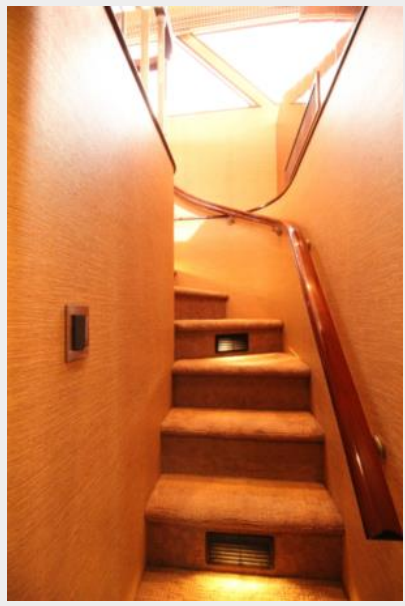








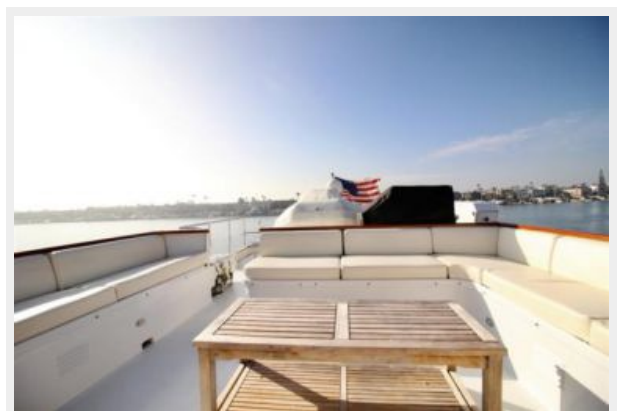


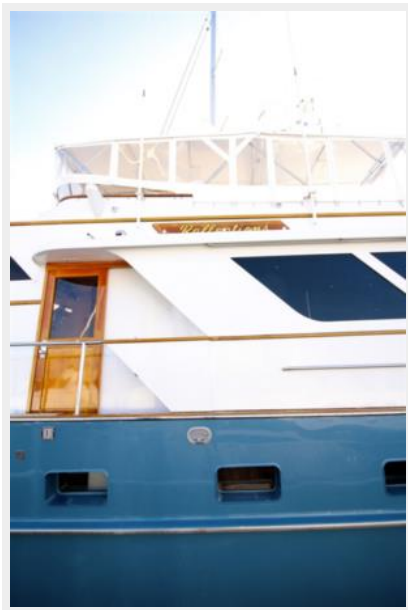




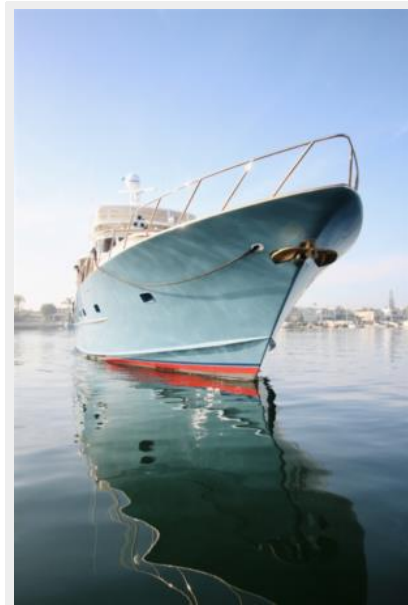


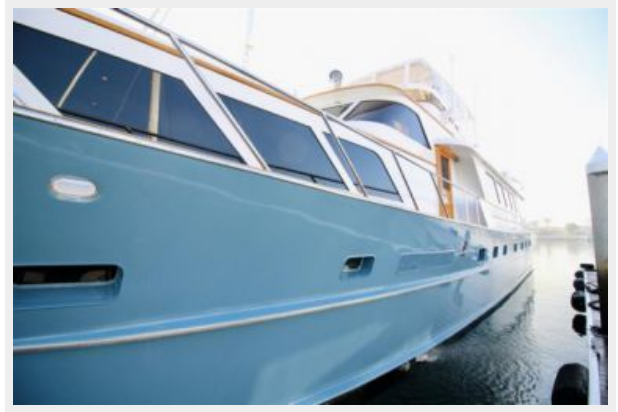












CONTACTS

Andrey Shestakov, leading yacht broker of the sales department of Shestakov Yacht Sales Inc. Shestakov Yacht Sales Inc., the official representative of the Miami/Fort Lauderdale FL headquarters.

Contact details

Email: andrey@shestakovyachtsales.com

Web: shestakovyachtsales.com/en/

Telephones

USA: +1(954)274-4435

Office hours

Monday – Saturday: **9:00 - 21:00** EDT

Sunday: **closed**

Address



Harbour Towne Marina, 850 NE 3rd St,
STE 213, Dania, FL 33004