

DENA GAIL — SEA RAY



Судостроитель: SEA RAY

Год постройки: 2012

Модель: Cruising Yacht

Цена: ЦЕНА ЯХТЫ ПО ЗАПРОСУ

Местонахождение: United States

Длина общая: 61' 6" (18.75m)

Ширина: 16' 9" (5.11m)

Макс. осадка: 4' 11" (1.50m)

Купить **DENA GAIL — SEA RAY** а также выбрать подходящую вам яхту из нашего каталога яхт вам поможет опытный яхтенный брокер Андрей Шестаков. На сегодняшний день компания **Shestakov Yacht Sales Inc.** имеет большое количество яхт в собственном списке продаж, а также тесно сотрудничает со всеми крупными яхтенными производителями по всему миру.

Для того чтобы купить яхту **DENA GAIL — SEA RAY** а также проконсультироваться по любому вопросу связанному с покупкой, продажей, чартером яхт позвоните по телефону **+7(918)465-66-44**.

ОГЛАВЛЕНИЕ

ОГЛАВЛЕНИЕ	2
ХАРАКТЕРИСТИКИ	5
Основная информация	5
Размеры	5
Скорость, вместимость и масса	5
Размещение	5
Корпус и палуба	5
Информация о двигателе	6
ПОДРОБНОЕ ОПИСАНИЕ	7
Boat Highlights	7
Vessel Walkthrough	8
Исключения	9
Отказ от ответственности	9
ФОТОГРАФИИ	10
Port profile	10
Bow profile	10
Stern profile	10
Aerial view	10
Helm	10
Cockpit	10
Upper salon	11
Lower salon	11
Master stateroom	11
Port profile 2	11
Swim platform	11
Cockpit view 2	11
Port cockpit	12
Cockpit looking aft	12

Helm view 2	12
Stbd profile 2	12
Helm station	12
Helm dashboard and switch panel	12
Twin Raymarine E140s	13
Upper salon looking forward	13
Port upper salon	13
Stbd upper salon	13
Sunroofs	13
Lower salon view 2	13
Entertainment center at the lower salon	14
Galley	14
Galley view 2	14
Galley view 3	14
Bose speakers	14
Master stateroom view 2	14
TV in the master stateroom	15
Master vanity	15
Master head with vanity	15
Master shower	15
VIP stateroom	15
Entertainment center in the VIP stateroom	15
Guest head	16
Guest shower with vanity	16
Guest shower	16
Guest/bunk stateroom	16
Stbd quarter profile	16
Bow	16
Port profile 3	17

Engine room	17
Engine 1	17
Engine 2	17
Engine room view 2	17
Engine room view 3	17
Stbd profile 3	18
Stern profile 2	18
КОНТАКТЫ	19
Контактная информация	19
Телефоны	19
Время работы	19
Адрес	19

ХАРАКТЕРИСТИКИ

Основная информация

Тип судна: Cruising Yacht	Модельный год: 2012
Год постройки: 2012	Страна: United States
Верх: Enclosed	Кубрик: Да

Размеры

Длина общая: 61' 6" (18.75m)	Ширина: 16' 9" (5.11m)
Макс. осадка: 4' 11" (1.50m)	

Скорость, вместимость и масса

Водоизмещение: 60200 Pounds	Вместимость воды: 200 Gallons
Вместимость сточного бака: 70 Gallons	Объем топливного бака: 900 Gallons

Размещение

Всего кают: 3	Всего коек: 4
Всего ком. состава: 2	

Корпус и палуба

Материал корпуса: Fiberglass	Материал палубы: Teak
Комплектация корпуса: Semi-Displacement	Цвет корпуса: White

Информация о двигателе

Двигатели: 2

Производитель: MAN

Модель: V10 1100 CR

Тип двигателя: Inboard

Тип топлива: Diesel

ПОДРОБНОЕ ОПИСАНИЕ

Boat Highlights

We are delighted to offer this 2012 Sea Ray 610 Sundancer to the market. All of the MAN service is believed to be up to date! The boat is exceptionally clean and shows well. She has the desirable white hull, new style window line, hydraulic lift, electric sunroof, night vision, engine room/back up camera, bow and stern thrusters, Yacht Controller, teak decking, aft folding cockpit sunpad and much more. The bottom was painted last in November of 2019 and the bottom is cleaned twice a year (once in the spring and once in the fall).

DENA GAIL features include (but are not limited to):

- Generator oil and filter recently changed (April 2021)
- Replaced the master stateroom air conditioning *UPGRADE
- Installed new maintenance free batteries (April 2021) *UPGRADE
- Replaced galley freezer *UPGRADE
- Replaced the sunroom wine cooler *UPGRADE
- Replaced the sunroom starboard heating and air conditioning *UPGRADE
- Replaced the VIP heating and air conditioning *UPGRADE
- Installed 4-12' speakers on top with amp and blue tooth module *UPGRADE
- LED lighting strip to light up rear of boat *UPGRADE
- Engine room and rear Garmin cameras seen on the MFD *UPGRADE
- Installed a larger Smart TV in master state room and sun room *UPGRADE
- Simple safe alarm *UPGRADE
- New window covers *UPGRADE
- New sun pads and cover on the bow *UPGRADE
- Replaced the cockpit ice maker and refrigerator *UPGRADE
- Replaced the port side Dometic vacuum flush generator *UPGRADE
- Extra Raymarine MFD *UPGRADE
- Twin MAN 1100 HP engine
- 21.5kW Onan generator
- Yacht Controller engine remote control system
- Bow and stern thrusters
- Hydraulic lift swim platform
- Climate-controlled cockpit sunroom
- (2) large independently actuated sun roofs
- Spare propellers with holder (pair)
- Fully functional electric bed in master stateroom
- Water filtration
- Underwater transom lighting
- Aft port and stbd cockpit capstans
- Dual Raymarine E140s

- Raymarine 240 VHF
- Built-in cockpit grill
- Windshield defroster
- Windshield washer system
- Coffeemaker
- Glass rack cabinet
- Kenyon electric three-burner stove
- Stidd helm and companion seats
- Wet bar on aft deck with U-Line ice maker
- Trash receptacle
- Beam built-in vacuum cleaner

...and many more!

Call now to make an appointment!

Vessel Walkthrough

DENA GAIL offers an unparalleled culmination of options, cleanliness, style, performance, and comfort. She has a teak covered hydraulic swim platform and teak steps on both port and stbd that lead to the large teak cockpit. The transom locker provides exceptional storage. Entry gates can be found on both the port and stbd side. The teak is in great condition. In the most aft portion of the cockpit is a bench seat that converts to an electrically actuated fold out sunpad. The cockpit area offers great seating, plenty of room for everyone, a table, an icemaker, a grill, and a refrigerator. Molded steps covered with teak on both the port and stbd side give access to the side decks. Just forward of the cockpit are two large stainless steel curved glass doors that allow access to the sunroom/upper salon. The sunroom also has teak floor, high gloss table, and seating to both the port and stbd. There is an electrically actuated pop up TV to stbd. Just forward and to the stbd side is the helm with Raymarine electronics package, Stidd helm and companion seats, Yacht Controller, bow and stern thrusters control as well as many other features. The view from the helm is not only fantastic but also unobstructed. A wine cooler is located in the forward port corner of this room. If you desire fresh air, the roof above has two large electric opening skylights and the forward window has two opening ports as well. Moving forward, centerline to port are steps leading down to a large lower salon. The port side of the salon is outfitted with curved seating, a movable ottoman, and a flat screen TV directly across from it. To the stbd is a large galley equipped with stainless steel appliances, Kenyon three-burner electric stove, glass rack cabinet, microwave/convection oven, large countertop, and plenty of storage. Just aft of the salon to port is the washer and dryer and then access to the full beam master. This bedroom offers a double bed with innerspring mattress and extra-large hull side windows, dresser, plenty of storage, bedside lamps and tables on both sides of the bed, and entertainment center. The TV is located at the forward of the bed on the bulkhead. The master head is private. It has tile flooring, vanity sink with mirror, storage, and a separate shower. Back to the salon, moving forward to stbd (just forward of the galley) is the guest stateroom with bunk beds, storage, and

entertainment center. Opposite of this room is the guest/day head complete with tile flooring, vanity sink with mirror, storage, and a shower.

All the way forward in the bow is the luxurious VIP stateroom featuring a double bed with innerspring mattress, drawer storage below, side shelves, closet space and an entertainment center. It has private access to the VIP/guest head.

Исключения

При продаже яхты исключаются личные вещи владельца.

Отказ от ответственности

Компания предоставляет описание судна или яхты добросовестно, но не может гарантировать точность этой информации, а также не ручается за техническое состояние. Покупатель должен проинструктировать своих агентов или оценщиков исследовать представленную информацию более подробно, по собственному желанию. Продажа судна или яхты, изменение цены или снятие с продажи будет происходить без предварительного уведомления.

ФОТОГРАФИИ

Port profile



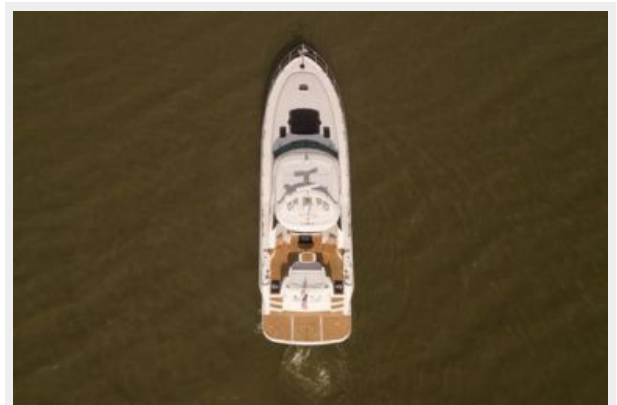
Bow profile



Stern profile



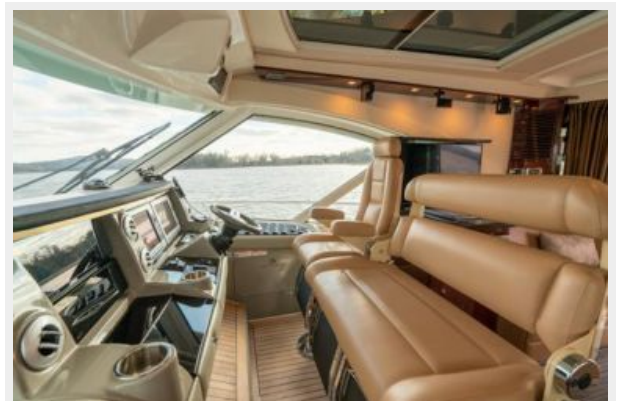
Aerial view



Cockpit



Helm



Upper salon



Lower salon



Master stateroom



Port profile 2



Swim platform



Cockpit view 2



Port cockpit



Cockpit looking aft



Stbd profile 2



Helm view 2



Helm station



Helm dashboard and switch panel



Twin Raymarine E140s



Upper salon looking forward



Port upper salon



Stbd upper salon



Sunroofs



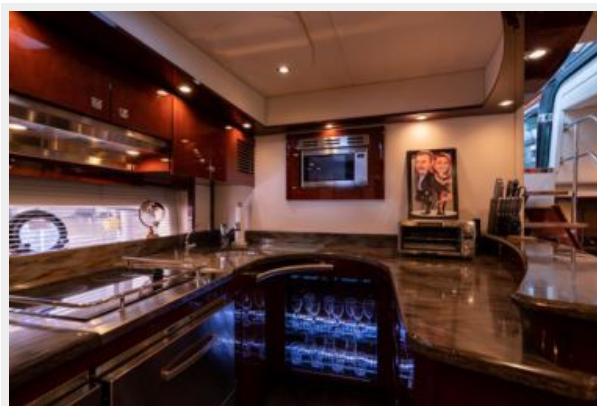
Lower salon view 2



Entertainment center at the lower salon



Galley



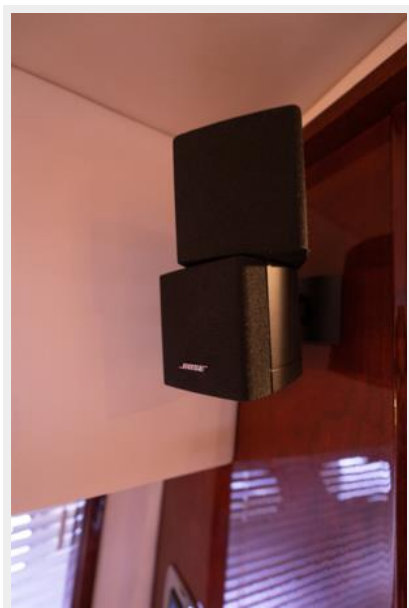
Galley view 2



Galley view 3



Bose speakers



Master stateroom view 2



TV in the master stateroom



Master vanity



Master head with vanity



Master shower



VIP stateroom



Entertainment center in the VIP stateroom



Guest head



Guest shower with vanity



Guest shower



Guest/bunk stateroom



Stbd quarter profile



Bow



Port profile 3



Engine room



Engine 1



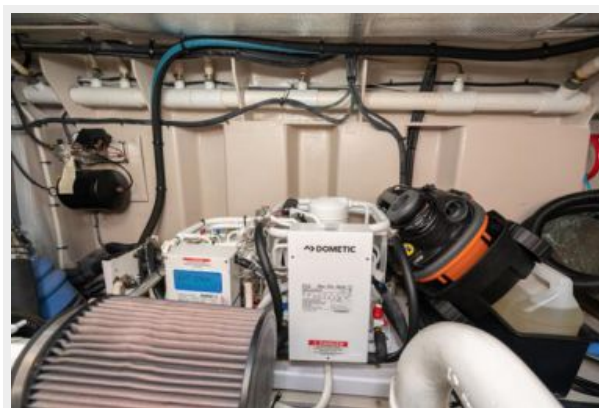
Engine 2



Engine room view 2



Engine room view 3



Stbd profile 3



Stern profile 2



КОНТАКТЫ

Андрей Шестаков (Andrey Shestakov) – ведущий яхтенный брокер отдела продаж яхт и судов компании Shestakov Yacht Sales Inc. Официальный представитель Shestakov Yacht Sales Inc. для русскоговорящих клиентов в центральном офисе компании в Майами/Форт Лодердейл/Флорида/США.

Контактная информация

Email: andrey@shestakovyachtsales.com

Web: shestakovyachtsales.com

Телефоны

Краснодарский край: **+7(918)465-66-44**

США, Майами, Флорида: **+1(954)274-4435**

Время работы

Понедельник – Суббота: **9:00 - 21:00**
EDT

Воскресенье: **Закрето**

Адрес



Harbour Towne Marina, 850 NE 3rd St,
STE 213, Dania, FL 33004