

VOYAGER — ASTILLEROS CELAYA



Судостроитель: ASTILLEROS CELAYA

Год постройки: 1973

Модель: Моторная яхта

Цена: **ЦЕНА ЯХТЫ ПО ЗАПРОСУ**

Местонахождение: Spain

Длина общая: 201' 0" (61.26m)

Ширина: 31' 0" (9.45m)

Мин. осадка: 15' 6" (4.72m)

Макс. осадка: 15' 6" (4.72m)

Крейс. скорость: 12.5 Kts. (14 MPH)

Макс. скорость: 17 Kts. (20 MPH)

Купить **VOYAGER — ASTILLEROS CELAYA** а также выбрать подходящую вам яхту из нашего каталога яхт вам поможет опытный яхтенный брокер Андрей Шестаков. На сегодняшний день компания **Shestakov Yacht Sales Inc.** имеет большое количество яхт в собственном списке продаж, а также тесно сотрудничает со всеми крупными яхтенными производителями по всему миру.

Для того чтобы купить яхту **VOYAGER — ASTILLEROS CELAYA** а также проконсультироваться по любому вопросу связанному с покупкой, продажей, чартером яхт позвоните по телефону **+7(918)465-66-44**.

ОГЛАВЛЕНИЕ

ОГЛАВЛЕНИЕ	2
ХАРАКТЕРИСТИКИ	4
Обзор	4
Основная информация	4
Размеры	4
Скорость, вместимость и масса	4
Размещение	5
Корпус и палуба	5
Информация о двигателе	5
ПОДРОБНОЕ ОПИСАНИЕ	6
VOYAGER Full Спеc	6
Исключения	20
Отказ от ответственности	20
ФОТОГРАФИИ	21
Voyager interior 3	21
1.1	21
Voyager 009	21
Voyager Interior 1	21
Voyager Skylounge 1	21
Voyager Mediaroom	21
Voyager Master Bath 18	22
Voyager Master	22
Voyager Red King 036	22
Voyager Queen Cabin II 10-2020	22
Voyager 42	22
Voyager Guest Blue	22
Voyager Bunkbed twin 035	23
Voyager 43	23

1613916590662	23
RWG07881	23
4	23
RWG07856	23
IMG_0659	24
RWG07860	24
IMG_0696	24
RWG07850	24
IMG_0676	24
IMG_0685	24
IMG_0670	25
1	25
IMG_9547	25
11	25
1.3	25
1.6	25
5	26
8	26
Voyager Yacht - General Arrangement Rev 08112020	26
КОНТАКТЫ	27
Контактная информация	27
Телефоны	27
Время работы	27
Адрес	27

ХАРАКТЕРИСТИКИ

Обзор

Key features: - Timeless classic lines by Sparkman & Stephens - Just completed an extensive 18 months technical refit - Accommodation for 22 guests in a 10+1 cabins layout - US coast guard certified helipad - 8,000 nm range - EU VAT paid

Основная информация

Тип судна: Моторная яхта

Модельный год: 1973

Год постройки: 1973

Год обновления: 2020

Страна: Spain

Размеры

Длина общая: 201' 0" (61.26m)

Длина по ватерлинии: 174' 3" (53.09m)

Ширина: 31' 0" (9.45m)

Мин. осадка: 15' 6" (4.72m)

Макс. осадка: 15' 6" (4.72m)

Скорость, вместимость и масса

Крейс. скорость: 12.5 Kts. (14 MPH)

Дальность на крейсерской скорости:
8100

Макс. скорость: 17 Kts. (20 MPH)

Водоизмещение: 1884952.3401 Pounds

Чистый вес: 780 Pounds

Вместимость воды: 14529.46286 Gallons

Объем топливного бака: 36696.13974332 Gallons
Расход топлива: 924.602182 Gallons

Размещение

Всего кают: 11

Спальные места: 22

Всего ком. состава: 11

Каюта капитана: Да

Каюты экипажа: 12

Спальных мест экипажа: 19

Комм. состав экипажа: 12

Корпус и палуба

Материал корпуса: Steel

Материал палубы: Teak

Цвет корпуса: Grey

Дизайнер корпуса: Sparkman & Stephens

Дизайнер экстерьера: Sparkman & Stephens

Дизайнер интерьера: Civitella Design

Информация о двигателе

Двигатели: 2

Производитель: Caterpillar

Модель: D399 Turbo

Тип топлива: Diesel

ПОДРОБНОЕ ОПИСАНИЕ

VOYAGER Full Spec

1. MAIN CHARACTERISTICS

TYPE	◦ Displacement Motor Yacht
BUILDER	◦ Astilleros y Talleres Celaya S.A
NAVAL ARCHITECT	◦ Sparkman & Stephens #2034
EXTERIOR DESIGN	◦ Sparkman & Stephens #2034
INTERIOR DESIGN	◦ Civitella Design S.A. – New Cruise 2009
YEAR	◦ 1973
REFIT	◦ 2020-2017-2015-2012-2009-2005-2003-1985
CALL SIGN	◦ HO3191
IMO	◦ 8985957
CLASSIFICATION	◦ IRS Private
CONSTRUCTION	◦ Steel Hull, Aluminium Superstructure, Teak Decks
CREW	◦ 19
FLAG	◦ Panama
ENGINES	◦ 2 x 1,125 Hp Caterpillar D399 Turbo Diesel
GT	◦ 780
NT	◦ 234
DISPLACEMENT	◦ 855 tons

2. DIMENSIONS

LOA	◦ 61.26m / 201'
LWL	◦ 53.09m / 174'
BEAM	◦ 9.45m / 31.2'
DRAFT	◦ 4.72m / 14'5"

3. SPEED & RANGE UNDER POWER

MAXIMUM SPEED	◦ 17 knots @ 1,100 rpm
CRUISING SPEED	◦ 12.5 knots @ 900 rpm
FUEL CONSUMPTION	◦ 3,500 litres / day @ 12 knots
RANGE	◦ 8,100 nm @ 12 knots

4. CAPACITIES

ACCOMMODATION	◦ Up to 22 x Guests in 10 + 1 cabins
CREW	◦ Up to 19 x Crew in 12 cabins
FUEL	◦ 138,910 litres / 36,696 US gallons max
FRESH WATER	◦ 55,000 litres / 14,529 US gallons

LUBE OIL	○ 1,740 litres / 460 US gallons
DIRTY OIL	○ 1,000 litres / 264 US gallons
GREY WATER	○ 10,340 litres / 2,731 US gallons
BLACK WATER	○ 10,500 litres / 2,774 US gallons
HELI JET FUEL TANK	○ 10,814 litres / 2,857 US gallons

5. ACCOMMODATION

○ OWNER & GUESTS

- 1 x Owner's suite on upper deck
- 2 x VIP cabins with en suites on lower deck aft
- 2 x Double cabins with en suite bathroom on lower deck forward
- 1 x Convertible cabin with en suite on lower deck aft
- 2 x Double cabins with en suites on lower deck aft
- 2 x Connecting Twin cabins on lower deck aft
- 1 x Convertible sky lounge on upper deck (can be converted into a second Owner's suite with en suite bathroom)

○ CREW

- 1 x Captain's cabin with en suite on main deck
- 4 x Single cabins with en suite on main deck
- 1 x Double cabin on main deck
- 1 x Triple occupancy cabin with en suite on lower deck
- 2 x Double occupancy cabins with en suite on lower deck
- 2 x Double occupancy cabins on lower deck
- 1 x Helicopter pilot's cabin on lower deck aft

○ OWNER'S SUITE

- 42 square metres finished in dark mahogany, king size bed, spacious living area, office area web access, private safe, 50" TV, six large windows; en suite bathroom with large hydro jet massage Jacuzzi. The Owner's suite is accessible from both a private staircase connecting to the library and from outside with starboard and port direct access doors.

○ GUESTS CABINS

- ■ 2 x VIP cabins of 19 square metres on lower deck aft, finished in natural mahogany, king size bed, desk with phone and internet access, 43" TV, private safe, three large portholes, en suite bathroom with shower.
- ■ 2 x Double cabins of 18 square metres on lower deck forward, finished in bright white wood panelling with mahogany bezelling, queen size bed, desk with phone and internet access, hidden make-up table, fashionable stainless steel lighting, a 40" TV, private safe, three large portholes, en suite bathroom with shower. These cabins are accessible from a private staircase connecting to the library. Refurbished in 2020.
- ■ 1 x Convertible cabin of 13 square metres on lower deck aft, white wood panelling with bright pearl wall covering, king bed that can be split into two twin size beds, full stereo/DVD system with a 26" Sharp flat screen TV, book shelves with phone and internet access, private safe, three large portholes, en suite bathroom with shower.

- ■ 2 x Double cabins of 17 square metres with two connecting cabins on lower deck aft, wood panelling finished in refreshing yellow and white wall, queen size bed, living area that can be converted into a twin bed cabin for children, desk phone and internet access, full stereo / DVD system with two 26" TVs, private safe, three large portholes. En suite bathroom with shower. These double and twin cabins are accessible from a central hallway, which is connected to the main deck dining area.
- Small Guest Office on lower deck aft with desk accessories to work in privacy.
- All lower cabins are accessible from a staircase connecting the main deck dining area.
- **SKY LOUNGE (Upper Deck)**
 - This area can be converted into a very large yet elegant second Owner's suite due to its drop down bed. 44 square metres full beam, finished in natural mahogany, white dome with colour-changing lighting, king size Murphy bed (totally imperceptible when pulled up and hidden in forward bulkhead), Persian style living area lavishly furnished with sofas and settees, table/office area with phone and internet access, private safe, mini bar, eight large windows, en suite bathroom with large hydro jet massage Jacuzzi forward. The sky lounge is accessible from a staircase connecting the dining area, it opens onto the upper sundeck with stainless steel sliding doors (usable manually and automatically) overlooking a spectacular panoramic view.
- **DINING AREA (Aft Upper Deck)**
 - The aft dining area features an impressive teak dining table with seating for over 12 x Guests for al Fresco dining. Ample seating area with Dedon design lounge sofas and long chairs, wet bar with seating for 6 x Guests, spacious U-shaped seating area for over 14 x Guests, JL Audio sound system, barbecue facilities **adjacent to the dining area.**
- **DINING ROOM (Main Deck)**
 - Finished with light sand accent wood panelling, seats up to 18 x Guests at 2 antique wood tables; the round table for more intimate dining for 6 and the large rectangle table for more than 12 x Guests. The elegant spacious dining area has a disk Yamaha baby grand piano, 400-bottle capacity wine cellar and is peppered with burgundy Nautilus design dining chairs. Christofle silver flat ware, Bernardaud Limoges fine porcelain and Riedel crystal glasses are delicately aligned, protected by custom made drawers and cabinets.
- **BAR (Main Deck)**
 - Finished with light sand accent wood panelling, L-shaped lit counter bar topped with black granite, curvy shape sink. 4 x Wooden bar seats, a small couch and an L-shaped couch. An invitation for an entertaining evening with practical storage including large capacity refrigerator, extensive custom made cabinet displays for alcohol decanters and cabinets for glasses. A 40" Sony flat screen TV is on the forward wall. Doors lead out to the aft deck.
- **SEATING (Aft Main Deck)**
 - The aft consists of an intimate and comfortable seating area around coffee

tables and a staircase going up to the upper deck, plus a shower.

- **LIBRARY** (Main Deck)
 - Finished in natural mahogany, with extensive shelving for a selection of books, DVDs, CDs and games. Location of the Media Max and Plex servers with almost unlimited storage capacity of DVDs, CDs, and photographs. Furnished with game table and 4 x lounge chairs.
- **MEDIA ROOM** (Midship Main Deck)
 - Finished with light sand accent wood panelling, fully equipped with very large LG 47" LCD flat screen TV, Game consoles, complete independent theatre sound system and video game station. There is a large comfortable sofa arrangement to seat up to 10 x Guests.
- **WHEELHOUSE** (Bridge Deck)
 - Smoked oak hardwood floor, herring bone pattern oak deck head, bulkheads covered with black Tabu bird's eye maple panelling. Console, chart table, desk, and cabinets hand milled from solid oak, carefully detailed with touches of gold and lightly padded with Italian black leather on top. Black and stainless steel adjustable captain's chair with a similar double one for the guests in this warm and appealing wheelhouse. Forward facing with double insulated tempered glass to reduce heat and prevent fogging. Access is by a staircase coming from the crew dining area and the library plus starboard and port direct access doors.
- **GARAGE**
 - Rebuilt in 2020. 17 square metres, finished with stainless steel ceiling and wall panelling, large equipment and toy storage area, 6 x large portholes, roller door on port side, 2 x Working desks, compressed air and hydraulics connection.

6. MECHANICAL EQUIPMENT

ENGINES	<ul style="list-style-type: none"> ○ 2 x 1,125Hp Caterpillar D399 Turbo Diesel ○ As of 12th October 2020:
ENGINE HOURS	<ul style="list-style-type: none"> ○ Port: 6,979 / Stbd: 6,879 hours ○ Both engines were rebuilt in July 2002 logging 2,400 hours at that time
GEARBOX	<ul style="list-style-type: none"> ○ 2 x 3.5:1 reserve reduction gear boxes
PROPULSION	<ul style="list-style-type: none"> ○ Air control
PROPELLERS	<ul style="list-style-type: none"> ○ 2 x Steel propeller shafts based in Ermaksan rubber bearings ○ 2 x 3-blade bronze fixed pitch propellers
RUDDER ANGLE	<ul style="list-style-type: none"> ○ 45 degrees; hydraulic
STABILISERS	<ul style="list-style-type: none"> ○ Naiad (last overhaul 2020)
BOW THRUSTER	<ul style="list-style-type: none"> ○ 160 bhp Plueger fixed pitch 3-speed electronically controlled
GENERATORS	<ul style="list-style-type: none"> ○ 2 x 275Kva D343 Caterpillar auxiliary 440V AC 60Hz ○ As of 12th October 2020:
GENERATOR HOURS	<ul style="list-style-type: none"> ○ Port: 50,183 hours / Stbd: 49,402 hours ○ Both generators were rebuilt in July 2002 logging 33,300 hours ○ Electrical system completely redone & upgraded 440V / 220V /

ELECTRICITY	110V, 60Hz
SHORE POWER	o 440V 3 Phase ENAG, 60Hz 120kW
BATTERIES	o 6 x 12V / Ampere hours gel cell
MAIN ENGINE STARTER	o Air propulsion
GENERATOR STARTER CHARGERS	o 180 ampere hours; 12V x 2 x 2
CONVERTERS	o ENAG 220V and 110V
EMERGENCY GENERATOR	o 1 x 40kW Perkins Diesel 440V AC 60Hz
AIR CONDITIONING	o 2 x 25-ton Carrier compressor water chillers A/C through separate air handlers for each room, air handlers with electric heat
WATERMAKER	o 2 x FSM with 6,048 litres capacity per day
TOILET SYSTEM	o Vacuum system by EVAC
SEWAGE SYSTEM	o Hamann HL Cont. Plus 25 (new in 2020)
FUEL SEPARATOR	o Alfa Laval MIB 303 (new in 2020)
WASTE DISPOSAL	o 2 x Franke TE50 waste disposal (new in 2020)
OIL / WATER SEPARATOR	o 115 Ppm DVZ 500 FS4 (new in 2020) o Hamann GS 025 galley separator (new in 2020)
FIRE / BILGE PUMP	o Bell & Gossett 1531; 1"1/4; 100GPM Itur AU60
COMPRESSORS	o 2 x Quincy Model 325-104

7. NAVIGATION EQUIPMENT

MAGNETIC COMPASS	o 1 x Lilley & Gillie SCH 40 midsize binnacle c/w Ocean
GYRO COMPASS	o Anschutz Digital Gyro STD22 installed late 2019
SATELLITE COMPASS	o 1 x Furuno GP30
AUTOMATIC PILOT	o 1 x C Plath Navipilot 4000
ECHO SOUNDER	o 1 x Furuno FE700 IMO o Furuno with colour video
RADARS	o 1 x JRC JMA 3900 o 1 x Furuno FR2115 20.1" flat screen display
TRANSPONDER	o 1 x Furuno UAIS ; FA-100 / Radar RP-250
AIS	o 1 x Furuno Universal FA100
DGPS	o 1 x Furuno GP 37
GPS	o 1 x Furuno GP150 o 1 x Furuno Navigator
COMPASS SAFE	o 1 x Furuno IC A110

DISTANCE CHART PLOTTER	◦ 1 x MaxiSea
NAVTEX	◦ 1 x JRC NCR 300A
WEATHER FAX	◦ 1 x Furuno Fax 207
WIND INSTRUMENT	◦ 1 x Raymarine ST60
SEARCHLIGHTS	◦ ACR 600 Zenon Remote controlled & focusable
MISCELLANEOUS	◦ Speich wiper control ◦ 1 x Furuno IC A110 compass safe distance

8. COMMUNICATION EQUIPMENT

SATCOM	◦ 1 x Inmarsat C Satcom ◦ 1 x Furuno FM8500 comes with DSC ◦ 1 x Icon IC A110
VHF	◦ 1 x Sailor SP3520 (emergency VHF) ◦ 1 x Furuno FS1570C MH/HF Radio ◦ 1 x GMDSS/ACR 2726 hand held radio
INTERIOR UHF	◦ 20 x Hytera
SHIP SECURITY ALERT SYSTEM	◦ 1 x Furuno Falcon 15
LOUDHAILER	◦ 3 x Standard
TELEPHONE EXCHANGE	◦ PABX Panasonic KX T 7630
VSAT	◦ KNS 100cm dish
TV-SAT	◦ KVH Track Vision HD 11

9. DECK EQUIPMENT

ANCHOR WINDLASSES	◦ Overhauled 2019
AFT WARPING CAPSTANS	◦ Overhauled 2020
ANCHORS	◦ 2 x Galvanised 500kg (new in 2020)
ANCHOR CHAINS	◦ 1 x Port 150m / 1 x Stbd 205m
BOAT CRANE & DAVITS	◦ 1 x Davit for 1 ton, 1 x bow for 500kg ◦ 1 x Helipad Hidrokon HK24 10.46m x 1.5 tons at 8.5m - 3.5 tons at 4.5m (new in 2020)
PASSERELLE	◦ Besenzoni
SIDE BOARDING	◦ Hydraulic step system Bronzoni (new in 2012)
POOL / JACUZZI	◦ Intex stowable

10. ENTERTAINMENT EQUIPMENT

TV / DVD	◦ Plex Server; Apple TV
MUSIC SYSTEM	◦ Sonos Wireless ◦ Marantz SR5500 12 speaker ◦ SRS circle surround II

- MAIN DECK**
- Elan digital power amplifier
 - DTS 96/24
 - ADA multi room preamplifier

- UPPER DECK**
- JL audio sound system
 - 6 x Speakers
 - Mixer Pioneer Recordbox XDJ-R1

- DJ SET**
- 1 x Subwoofer
 - 1 x Amplifier
 - 4 x Speakers

- GYM**
- 2 x Go-cycle electric bicycle and helmets, various gym equipment

11. GALLEY & LAUNDRY EQUIPMENT

○ GALLEY

- High tech stainless steel design
- Compliant with the strict USPH regulations for kitchen and food preparation facilities
- All equipment installed is of commercial grade quality
- Large enough for a chef and several sous-chefs for big parties
- Fireproof and watertight doors
- Bulkheads and deck heads are now A60 fireproof
- 1 x Dishwashing area
- 1 x Coffee station area
- 1 x Temperature controlled 400-bottle wine cellar in dining room
- 1 x Walk-in coolers & freezers stainless steel (Autonomy: several weeks @ sea)
- 1 x Dry storage room for food
- 3 x Deep sinks, stainless steel
- 1 x Work Island with folding leaves, stainless steel
- 1 x Copious amounts of stainless steel shelving throughout the galley
- 1 x Galley bulkheads: stainless steel
- 1 x Galley deck heads: stainless steel w/ bright yellow powder coated
- Aluminium floating deck head
- Flooring; anti-skid commercial 2"x 2" tiling
- 2 x True Refrigerators T-23-2 stand up double Dutch door, stainless steel
- 1 x True freezer under counter TUC-27f, stainless steel
- 1 x True cold table in counter TSSU 48-8, stainless steel
- 1 x Garland Range S-684, 10 electric burners on top, 2 ovens below stainless steel
- 1 x Garland salamander, SERC, stainless steel
- 1 x Garland convection oven, MCO-E-5/25 master half size, stainless steel
- 1 x Hobart dishwasher sanitizer ml-27873 sr24h, stainless steel
- 1 x Hoshizak Ice Maker, KM-250BAE cubes, up to 230lbs / 24 hrs / in pantry + 1 x Powmer / 1 x Migel
- 3 x Insinkerator garbage disposal SS-50 manual reversing
- 1 x La Cimbali M29 select espresso machine, stainless steel

- 1 x Industrial sound proofed mixer and blender, stainless steel
- 1 x Industrial smoking machine, stainless steel
- 1 x Industrial sorbet and ice cream machine
- 1 x Industrial sound proofed robot, stainless steel
- 1 x Industrial steam machine, stainless steel
- 1 x Industrial rice cooking machine, stainless steel
- 2 x Bunn coffee makers, stainless steel
- 1 x Charbroil BBQ, 3 burners and a side burner, stainless steel
- 1 x Breville toast machine
- 1 x Dualit toaster
- 1 x Breville kettle machine
- 1 x Nespresso coffee machine
- 1 x Magimix coffee machine
- 1 x Nilfish vacuum cleaner
- 1 x Neosystem DV 53 dishwasher

○ PANTRY

- Dry stores walk-in pantry below the galley 7'x14'x7' with extensive modular shelving, flooring with anti-skid commercial 2'x 2' rubber dot tiles
- Freezer-and-cooler combo walk-in 7'x14'x7' stainless steel, bondable stores in cooler area, shelving throughout, stainless steel floor and deck head

○ LAUNDRY

- Extensive laundry facility refurbished and re-equipped during 2020 refit
- Located in the crew area forward on the lower deck allowing a quiet, removed but still easily accessible space where copious amounts of laundry can be cleaned and pressed day or night
- Flooring with anti-skid commercial marine 2"x 2" tiles
- 3 x Miele W3033 washing machines
- 3 x Miele T8013C dryers

12. SECURITY & SAFETY EQUIPMENT

SECURITY

- 16 x Colour cameras throughout
- Cameras can record & save up to 30 days of filming on hard disk
- 1 x EPIRB Ocean Signal E100
- 6 x Emergency rafts; SOLAS compliant
- 43 x life jackets and immersion suits

SAFETY

- 1 x Whistle controller Kahlenberg M-511A
- 1 x Teel self-prime emergency bilge pump with Baldor motor
- 1 x Integrated Westinghouse / ITUR bilge pump with Baldor motor
- 1 x Westinghouse / ITUR ballast pump with Baldor motor

FIRE FIGHTING

- 1 x Notifier AFP-200 fire detection and alarm system
- New fire detection system with smoke & heat detectors throughout ship (2020)
- Main fire pump, Bell & Gossitt with Baldor motor

13. TENDER & WATERSPORTS EQUIPMENT

TENDER

- 1 x 22'4" Mako 680 with 200Hp Suzuki outboard
- 1 x Sea Doo 3 person waverunner Jetski
- 1 x Wakeboard
- 3 x Pair water skis including slalom and mono
- 2 x Airhead super slice
- 2 x Paddling Jacuzzi inflatable pool
- 1 x Water bed
- 2 x Banana boat

WATERSPORTS

- 2 x Nautibuoy inflatable docks
- 1 x Inflatable Aquapark with:
 - 1 x 6m Trampoline, 1 x Pyramid and 1 x Slide
- 1 x Inflatable sailing boat
- 1 x Twin kayak
- 1 x Single kayak
- 2 x BIC inflatable paddle board
- 10 x Recreational games and various rackets

DIVING EQUIPMENT

- 19 x Goggles
- 11 x Diving fins
- 14 x Diving shoes
- 16 x Diving suits (incl. child)
- 25 x Lead weights
- 6 x Diving tube
- 3 x Dive compressors
- 2 x Power dive floating dive compressors
- 1 x Garrett sea hunter mark II

FISHING EQUIPMENT

- 7 x Fishing rods and assorted tackle
- 1 x Ocean Devil fishing gear

14. REFIT NOTES○ **REFIT 2019 / 2020**

- The primary objective of this 18 months refit was to maintain and repaint the hull and superstructure. Shafts were removed and shaft beds rebuilt in order to obtain higher cruise speeds and meet the original Sparkman Stephens design. All technical units were overhauled and upgraded where necessary to meet class standards. One of the davits was replaced with a new crane and its superstructure foundation to enable high lift capability of 1.5 tonnes at 10.5m and up to 2.4 tonnes at 6.4m to enable seaplane operations or any other lifting requirement. All interiors were refreshed where necessary and the aft sky lounge deck was replaced with a new aft seating area and a larger bar.
- ■ 10.46m x 1.5 ton Hidrokon crane installed on upper deck including all hydraulic systems, steel superstructure and foundations to support crane from lower decks
- 17 square metres garage area with stainless steel closets and ceilings
- Lower deck forward VIP Cabins fully dismantled and all the panels, beds &

ceilings renewed

- Lower deck forward VIP Cabin access stairs repaired with new wood
- Lower deck forward VIP Cabin electrical system and pipe system renewed
- Forward hull steel plate renewed
- Forward hull anchor eyes configured
- Forward hull anchor eyes plated with stainless steel
- 2 x New galvanised anchors for port and starboard
- New TV satellite antenna (KVH Track Vision HD 11) installed
- New ANSCHUIJL digital gyro STD 22 installed
- AYKOP PT100 engine to bridge monitoring system installed
- CCTV screen replaced
- 16 x Cameras of CCTV replaced
- All steel plates of lower deck crew area floor renewed
- All rooms of lower deck crew area rebuilt with insulated stainless steel panelling
- All pipes renewed
- Electrical system and fire detection system in lower deck crew area renewed
- All ceramics of lower deck crew area bathrooms renewed
- All furniture of lower deck crew area renewed
- Windlass dismantled and windlass foundation renewed
- Garbage disposal system installed in the galley
- Galley dishwasher replaced with Neosystem DV 53
- Installed new sliding doors to skylounge aft
- Upper deck starboard side davit dismantled and removed to make way for new terrace
- Teak floor laid on upper deck starboard sides
- New steel handrail installed on upper deck starboard side
- Automatic roller door installed on upper deck port side
- Upper deck aft bar extended
- Upper deck aft old Jacuzzi replaced by new teak
- Sun bed area replaced
- Upper deck aft bar counter and L-shaped counter renewed with Corian
- Installed new professional sound system on upper deck aft
- Upper deck aft ceiling renewed and painted
- Upper deck aft ceiling lights replaced with marine type stainless steel LED lights
- U-shaped fiberglass fixed seating for 18 people installed on upper deck aft area
- New cushions manufactured for the U-shaped seating
- Master cabin bathroom panelling repaired
- Dining room and bar ceilings painted and ceiling frames renewed
- Sky lounge dome renewed and painted in white
- Installed lighting on sky lounge dome
- Sky lounge aft left and right portholes renewed
- S-shaped stairs from main deck aft to upper deck aft removed
- New stairs with steel construction, teak steps and LED lights installed on aft

main deck and upper deck

- 3 x Stainless steel windlasses built in main deck aft
- Tank numbers.1, 2, 4, 7 and 8 cleaned with sand blasting and painted
- 600 x Square metres of the top coat hull painted and 150 x square metres retouched from bare metal
- Rope eyes on the hull framed with stainless steel
- Main deck, upper deck, forecastle teak handrails sanded, painted in dark brown and varnished
- 345 x Square metres of superstructure painted
- Underwater hull sanded with high pressure water and antifouling paint applied
- All the zinc in underwater hull renewed
- Pipework for new DVZ, Hamman and Alfa Laval installed
- New sewage treatment plant (Hamman) installed
- New fuel purifier (Alfa Laval) installed
- Shaft alignment corrected by rebuilding shaft beds
- Tail shaft dismantled
- Crack test applied on tail shaft
- Dismantled and inspected the propellers
- Crack test applied on the propellers – found in good condition
- Propeller shaft dismantled and bearings renewed, 1 x bearing installed to the system
- Main engine serviced
- 2 x Generators serviced
- Air conditioning system serviced
- Watermaker system serviced
- Bilge well cleaned and painted
- 2 x Main engine and 2 x Generators painted in white
- Engine room insulations renewed
- Engine and generator pipes covered with stainless steel
- Engine room floor panel anodized and painted with static paint
- Engine room fan renewed and made soundproof
- Main switchboard covers maintained and painted
- Meger test applied
- Main switch and engine room line labelled and switches renewed
- 6 x Pieces of cooper line valves renewed in freshwater system collector line
- New piping to garage installed
- Engine workshop painted and new portholes installed
- Sewage pump serviced
- Shaft way cleaned and painted
- Stabiliser's both side bearings and seals renewed
- Both engines 4 + 4 pcs intermediate shaft and all bearings dismantled, inspected – found in good condition, installed back and re-aligned
- A/C system compressor and chiller system serviced
- Ship's horn repaired and covered with stainless steel

- Helicopter fuel station serviced
- 4 x Pieces of A/C pumps dismantled, repaired, and reinstalled
- PTS and SBS funnels fan houses and fans repaired, silencers added to reduce noise
- Helideck aft mast deconstructed
- Helideck emergency generator's batteries renewed
- New ship insignia on funnel with stainless steel and LED lighting
- Rudder system serviced
- Evac converter system serviced
- AIS antenna replaced
- SSAS antenna replaced
- Maxisea ECDIS system installed
- Autopilot serviced
- 100. New oily water separator (DVZ 500) installed
- Main deck aft passarelle serviced, handrail chocks manufactured and installed
- Passerelle teak floor renewed
- Hidden shower installed on main deck aft
- Main deck starboard gangway serviced
- Stainless steel cover installed on main deck starboard gangway
- Stairs from main deck to upper deck painted and floored with teak
- Main deck side and aft wood ceilings renewed
- All the lights in main deck ceiling replaced with marine type LED lights
- New forward mast installed at forecastle area
- New forward mast navigation lights cabled and installed
- Chain cleaning system renewed
- Main deck crew area starboard and crew rooms furniture renewed
- Crew beds renewed
- Jet-ski yellow seat cover renewed
- Port and starboard stairs from upper deck to bridge renewed with teak steps
- Upper deck SB and PT side old fashioned aluminium lights renewed with s/s lights
- 3 x Washing machines and 3 x Dryers overhauled
- Bowthruster and relevant electrical system serviced and repaired or replaced
- Helideck painted and sanded
- Helideck forward storage area white covers renewed
- Wing remote control panels serviced and polished
- Teak floor upper deck repaired
- Tender and engine overhauled and serviced
- **REFIT 2017**
 - Port and Starboard side boards paint renewed
 - 6 x Helideck chrome rail units repaired
 - Main deck and upper deck teak repaired
 - Cracks on the flare of ship's bow repaired and painted
 - Aft passerelle hatch repaired

- Bridge windshield renewed
- All over teak capping rail dismantled, foundation maintained, reinstalled and re-varnished
- Bottom hull spelters renewed
- All porthole rubbers renewed
- All guest cabin bathroom sinks galvanised
- Hull inspected out of water with selected hull repairs
- Underwater hull anti-fouling renewed
- Engine shafts dismantled and maintained
- Anchor hose pipes scraped and painted
- Anchor and the whole chain galvanised
- Anchor locker fixed
- Crew cabin 101 re-furnished
- Forward windlass serviced
- Davit system pulleys repaired, gears replaced
- Guests & Crew porthole blinds dismantled re-painted, gaskets renewed
- Compass deck scraped and painted
- All safety equipment serviced
- Bridge navigation AID equipment serviced
- Stabiliser serviced
- Compressor air valve serviced, new compressor assembled
- All air conditioner units serviced, filters replaced
- Engine room fan contactors replaced, frequency converters moved to aft
- Service air pressure reducing valve removed and overhauled
- Forward air conditioner compressor and electrical engine block serviced
- Electrical starter engine in the air conditioner compressor system renewed
- Governor (main engine fuel control system) serviced
- Fuel transfer pump of the starboard side main engines partially replaced
- Fuel injection valve nozzles of the port and starboard side generators replaced
- Helicopter fuel pump disassembled and serviced
- Jet ski lift overhauled
- Air conditioner digital temperature controller device installed
- Starboard shaft 2 x Pieces of coupling, no 3 and no 4 bearing case caps removed and placed into correct limits and position
- Both aft shafts on port and starboard pulled out and realigned
- Hole placed on the frame between the grey water tank and the cofferdam to increase the grey water capacity tank by 50%, Cofferdam added in to the grey water tank
- New emergency compressor mounted in the engine room, Safety fuse and pressostat installed for automatic control
- **REFIT 2015**
 - Aft deck extended by 2.4m at sky lounge level, giving 13m² extra deck space
 - New Jacuzzi bar and sun lounge area installed on extended aft deck
 - Teak decks renewed on bridge deck, boat and main decks

- All the furniture and floor varnished in the Owner's suite
- Generator 10-year survey, conducted inspection and relevant works
- New frequency convertor box in engine room for adjusting engine room fans rpm
- Air condition compressor overhauled
- Stainless steel anchor plates installed
- New Helideck post and covers
- Helideck landing lights and camera renewed
- Windlass brakes renewed
- New VSAT internet installed
- Fuel pumps renewed
- Jet ski crane electric motor dismantled and repaired
- Fresh water tank no. 8 repaired
- Air handler fans filters renewed
- 2 x New hour metres mounted for port and starboard generators
- Engine room electrical boxes cleaned and connections checked
- Vacuum pump no. 2 renewed
- Main engines serviced
- Significant maintenance works on both generators serviced

15. COMMENTS

The 61.26m displacement yacht VOYAGER is now offered for sale. A great opportunity to buy a classic steel-hulled yacht which has been fully updated for 21st-century living, she would also be a fantastic support vessel.

Built in 1973, VOYAGER's naval architecture and timeless exterior design is by Sparkman & Stephens, with interiors by Civitella Design S.A that feature lots of natural wood and light throughout, plus no shortage of inviting spaces in which to socialise or chill out.

VOYAGER has just undergone a thorough 18 months technical and mechanical refit which included an overhaul and service of all mechanical components together with a hull and superstructure respray and a cosmetic refurbishment of the interior.

VOYAGER can accommodate 22 guests across 10 + 1 cabins, with a large Owner's suite finished in dark mahogany located on the upper deck and the option for the sky lounge to convert to a second very elegant Owner's suite.

The rest of the accommodation is spread out across the lower deck and includes two VIP cabins, four doubles, two connecting twin cabins and a convertible. There is also room for 19 crew on board.

In addition, VOYAGER comes with a large US coast guard certified helipad with refueling station to ensure guests can arrive and depart effortlessly, wherever you are in the world.

Powered by twin 1,125 hp D399 Caterpillar diesel engines, VOYAGER yacht has a top speed of 17 knots and cruises at 12.5 knots. She has an ocean-crossing range of 8,000nm

at 12 knots.

- **Key features**

- Timeless classic lines by Sparkman & Stephens
- Just completed an extensive 18 months technical refit
- Accommodation for 22 guests in a 10+1 cabins layout
- US coast guard certified helipad
- 8,000 nm range
- EU VAT paid

Исключения

При продаже яхты исключаются личные вещи владельца.

Отказ от ответственности

Компания предоставляет описание судна или яхты добросовестно, но не может гарантировать точность этой информации, а также не ручается за техническое состояние. Покупатель должен проинструктировать своих агентов или оценщиков исследовать представленную информацию более подробно, по собственному желанию. Продажа судна или яхты, изменение цены или снятие с продажи будет происходить без предварительного уведомления.

ФОТОГРАФИИ

1.1



Voyager interior 3



Voyager Interior 1



Voyager 009



Voyager Mediaroom



Voyager Skylounge 1



Voyager Master



Voyager Master Bath 18



Voyager Queen Cabin II 10-2020



Voyager Red King 036



Voyager 42



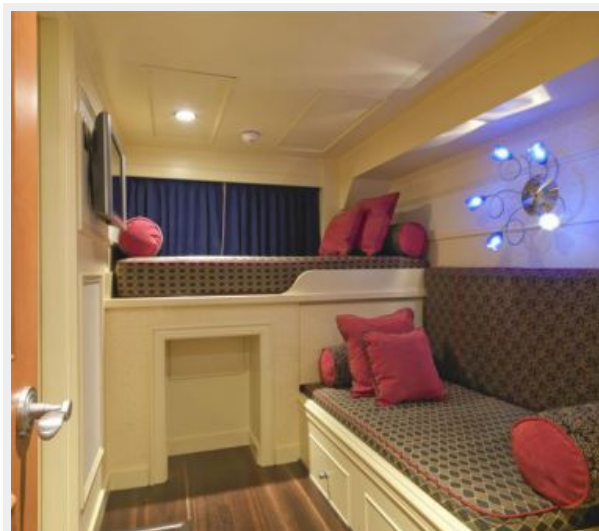
Voyager Guest Blue



Voyager 43



Voyager Bunkbed twin 035



1613916590662

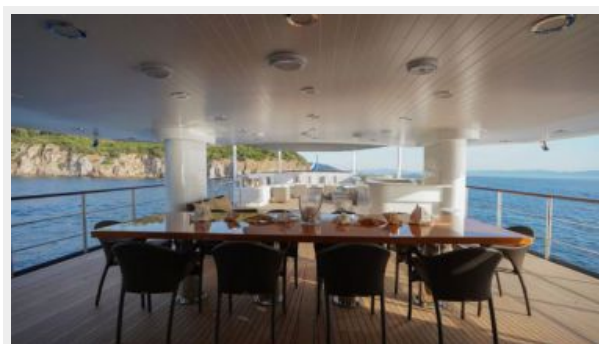
RWG07881



4



RWG07856



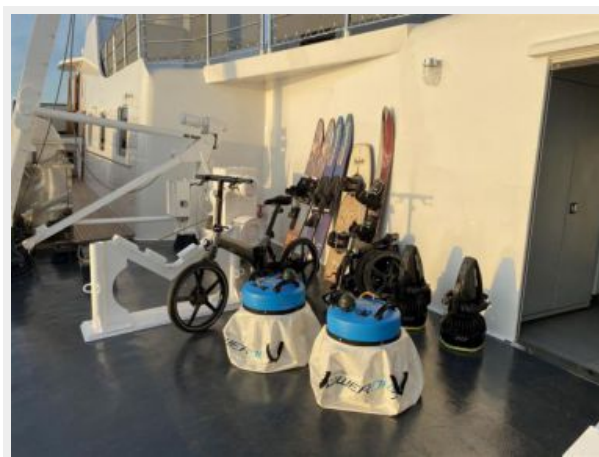
IMG_0659



RWG07860



IMG_0696



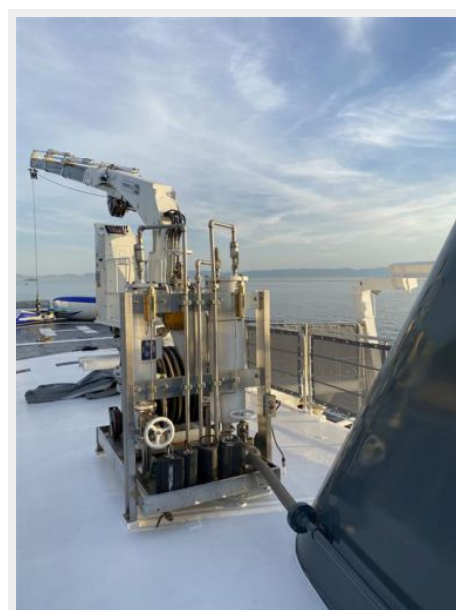
RWG07850



IMG_0676



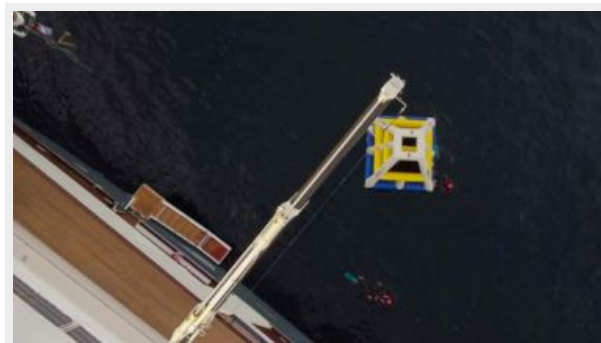
IMG_0685



IMG_0670

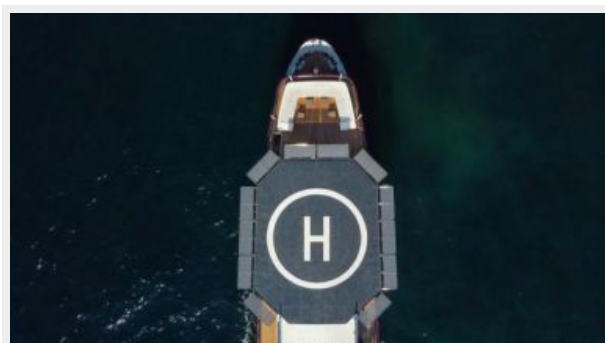


1



IMG_9547

11



1.3



1.6



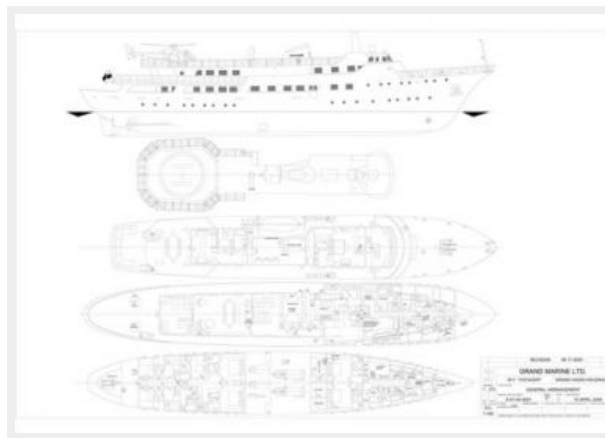
5



8



Voyager Yacht - General Arrangement Rev 08112020



КОНТАКТЫ

Андрей Шестаков (Andrey Shestakov) – ведущий яхтенный брокер отдела продаж яхт и судов компании Shestakov Yacht Sales Inc. Официальный представитель Shestakov Yacht Sales Inc. для русскоговорящих клиентов в центральном офисе компании в Майами/Форт Лодердейл/Флорида/США.

Контактная информация

Email: andrey@shestakovyachtsales.com

Web: shestakovyachtsales.com

Телефоны

Краснодарский край: **+7(918)465-66-44**

США, Майами, Флорида: **+1(954)274-4435**

Время работы

Понедельник – Суббота: **9:00 - 21:00**
EDT

Воскресенье: **Закрито**

Адрес



Harbour Towne Marina, 850 NE 3rd St,
STE 213, Dania, FL 33004