

## THE OASIS — CUSTOM



**Builder:** CUSTOM

**Year Built:** 1999

**Model:** Motor Yacht

**Price:** PRICE ON APPLICATION

**Location:** United States

**LOA:** 89' 0" (27.13m)

**Beam:** 20' 0" (6.10m)

**Max Draft:** 5' 6" (1.68m)

**Cruise Speed:** 11 Kts. (13 MPH)

Our experienced yacht broker, Andrey Shestakov, will help you choose and buy a yacht that best suits your needs **The Oasis — CUSTOM** from our catalogue. Presently, at Shestakov Yacht Sales Inc., we have a wide variety of yachts available on our sale's list. We also work in close contact with all the big yacht manufacturers from all over the world.

If you would like to buy a yacht **The Oasis — CUSTOM** or would like help answering any questions concerning purchasing, selling or chartering a yacht, please call **+1(954)274-4435**

# TABLE OF CONTENTS

TABLE OF CONTENTS	2
SPECIFICATIONS	4
Overview	4
Basic Information	4
Dimensions	4
Speed, Capacities and Weight	4
Accommodations	4
Hull and Deck Information	5
Engine Information	5
DETAILED INFORMATION	6
MAIN DESCRIPTION	6
89' STEEL CUSTOM BUILT MOTOR YACHT DECK AND HULL	6
89' CUSTOM STEEL BUILD MOTOR YACHT ELECTRONICS	6
89' STEEL CUSTOM MOTOR YACHT ELECTRICAL/MECHANICAL	6
89' STEEL CUSTOM BUILD MOTOR YACHT INTERIOR	6
DISCLAIMER	6
Exclusions	7
Disclaimer	7
PHOTOS	8
1	8
2	8
3	8
4	8
5	9
6	9
7	9
8	9
9	10

---

10	10
11	10
CONTACTS	11
Contact details	11
Telephones	11
Office hours	11
Address	11

---

# SPECIFICATIONS

---

## Overview

---

This steel motor vessel is quite a gem and not to be overlooked! Historically used as an office on the Potomac in DC, this spacious Custom Kelly Motor Yacht would make a great family live a board or plenty of room as a research ship. Whatever the use, this steel vessel is in overall good condition and would need some cosmetic work to make it your own. The infrastructure of this grand motor yacht is sound and solid. She holds 2 Cummins V-903M diesel engines and a third Cummins 239 CID/3.9L supporting the thrusters. A MUST SEE MOTOR YACHT! Showings by appointment only. Please contact broker for more information.

## Basic Information

---

**Category:** Motor Yacht

**Model Year:** 1999

**Year Built:** 1999

**Country:** United States

## Dimensions

---

**LOA:** 89' 0" (27.13m)

**Beam:** 20' 0" (6.10m)

**Max Draft:** 5' 6" (1.68m)

## Speed, Capacities and Weight

---

**Cruise Speed:** 11 Kts. (13 MPH)

**Water Capacity:** 500 Gallons

**Holding Tank:** 300 Gallons

**Fuel Capacity:** 2200 Gallons

## Accommodations

---

**Total Cabins:** 3

**Total Heads:** 4

---

## Hull and Deck Information

---

**Hull Material:** Steel

---

## Engine Information

---

**Engines:** 3

**Manufacturer:** Cummins

**Model:** V-903M

**Engine Type:** Inboard

**Fuel Type:** Diesel

---

# DETAILED INFORMATION

---

## MAIN DESCRIPTION

---

This steel motor vessel is quite a gem and not to be overlooked! Historically used as an office on the Potomac in DC, this spacious Custom Kelly Motor Yacht would make a great family live a board or plenty of room as a research ship. Whatever the use, this steel vessel is in overall good condition and would need some cosmetic work to make it your own. The infrastructure of this grand motor yacht is sound and solid. She holds 2 Cummins V-903M diesel engines and a third Cummins 239 CID/3.9L supporting the thrusters. A MUST SEE MOTOR YACHT! Showings by appointment only. Please contact broker for more information.

## 89' STEEL CUSTOM BUILT MOTOR YACHT DECK AND HULL

---

Infrared Thermography examination on the bottom, hull and transom (2017) Fresh bottom paint and new thru hull fittings (2020) Electric Windlass Navigation Lights Danforth plow anchor 200' chain 9/16"

## 89' CUSTOM STEEL BUILD MOTOR YACHT ELECTRONICS

---

Upper deck with wheel house, sink, counter and refrigerator Helm includes Raytheon L365 S/N fish/depth Richie Compass JRC Model JMA2254 Radar Garmin GPS 128

## 89' STEEL CUSTOM MOTOR YACHT ELECTRICAL/MECHANICAL

---

AC/DC switch and fuse panel Circuit protection 2 75amp alternators (main engines) 4 50amp 125/250 volt shore power cords Galvonic Isolators Stranded copper wiring 2 main engine 908D batteries 3 auxillary 908D batteries Marine air heat and AC 16000btu units Hot water heater 50 gal 1 FHP heat pump model EC030-1VTN

## 89' STEEL CUSTOM BUILD MOTOR YACHT INTERIOR

---

Interior furnishings have all been removed Galley does have refrigerator, sink, and counter Exterior inside walls and ceiling of main salon need to be refit 3 Heads with toilets and sinks (no showers currently) Currently 2 cabins are framed out Upper aft deck was used as a conference room This vessel can be built out with plenty of designated spaces

## DISCLAIMER

---

---

The Company offers the details of this vessel in good faith but cannot guarantee or warrant the accuracy of this information nor warrant the condition of the vessel. A buyer should instruct his agents, or his surveyors, to investigate such details as the buyer desires validated. This vessel is offered subject to prior sale, price change, or withdrawal without notice.

## **Exclusions**

---

Owner's personal belongings.

## **Disclaimer**

---

The Company offers the details of this vessel or yacht in good faith but cannot guarantee or warrant the accuracy of this information nor warrant the condition of the vessel. A buyer should instruct his representatives, agents, or his surveyors, to investigate such details as the buyer desires validated. This vessel or yacht is offered subject to prior sale, price change, or withdrawal without notice.

# PHOTOS

1



2



3

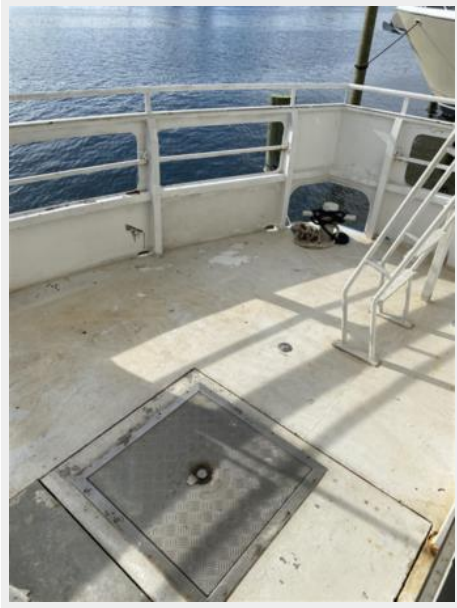


4





5



6



7



8



9



10



11



# CONTACTS

---

Andrey Shestakov, leading yacht broker of the sales department of Shestakov Yacht Sales Inc. Shestakov Yacht Sales Inc., the official representative of the Miami/Fort Lauderdale FL headquarters.

## Contact details

---

Email: [andrey@shestakovyachtsales.com](mailto:andrey@shestakovyachtsales.com)

Web: [shestakovyachtsales.com/en/](http://shestakovyachtsales.com/en/)

## Telephones

---

USA: +1(954)274-4435

## Office hours

---

Monday – Saturday: **9:00 - 21:00** EDT

Sunday: **closed**

## Address

---



Harbour Towne Marina, 850 NE 3rd St,  
STE 213, Dania, FL 33004