

38 MERIDIAN — MERIDIAN



Builder: MERIDIAN

Year Built: 2003

Model: Motor Yacht

Price: PRICE ON APPLICATION

Location: United States

LOA: 38' 6" (11.73m)

Beam: 13' 7" (4.14m)

Max Draft: 3' 4" (1.02m)

Cruise Speed: 21 Kts. (24 MPH)

Max Speed: 30 Kts. (35 MPH)

Our experienced yacht broker, Andrey Shestakov, will help you choose and buy a yacht that best suits your needs **38 Meridian — MERIDIAN** from our catalogue. Presently, at Shestakov Yacht Sales Inc., we have a wide variety of yachts available on our sale's list. We also work in close contact with all the big yacht manufacturers from all over the world.

If you would like to buy a yacht **38 Meridian — MERIDIAN** or would like help answering any questions concerning purchasing, selling or chartering a yacht, please call **+1(954)274-4435**

TABLE OF CONTENTS

TABLE OF CONTENTS	2
SPECIFICATIONS	5
Basic Information	5
Dimensions	5
Speed, Capacities and Weight	5
Accommodations	5
Hull and Deck Information	5
Engine Information	6
PHOTOS	7
P4221088	7
P4221090	7
P2100965	7
P2100966	7
P2100967	7
P2100968	7
P2100969	8
P2100970	8
P2100971	8
P2101009	8
P2101008	8
P2101007	8
P2100972	9
P2100973	9
P2100974	9
P2100975	9
P2100976	9
P2101000	9
P2100977	10

P2100978	10
P2100979	10
P2100980	10
P2100999	10
P2100981	10
P2100982	11
P2100983	11
P2100984	11
P2100985	11
P2100986	11
P2100987	11
P2100988	12
P2100989	12
P2100990	12
P2100991	12
P2100992	12
P2100993	12
P2100994	13
P2100995	13
P2101014	13
P2101010	13
P2101011	13
P2101012	13
P2101013	14
P2101015	14
P2101001	14
P2101002	14
P2101003	14
P2101005	14

CONTACTS	15
Contact details	15
Telephones	15
Office hours	15
Address	15

SPECIFICATIONS

Basic Information

Category: Motor Yacht

Model Year: 2003

Year Built: 2003

Country: United States

Vessel Top: Bimini Top

Cockpit: Yes

Dimensions

LOA: 38' 6" (11.73m)

Beam: 13' 7" (4.14m)

Max Draft: 3' 4" (1.02m)

MFG Length: 38' 0" (11.58m)

Speed, Capacities and Weight

Cruise Speed: 21 Kts. (24 MPH)

Max Speed: 30 Kts. (35 MPH)

Displacement: 22275 Pounds

Water Capacity: 125 Gallons

Holding Tank: 37 Gallons

Fuel Capacity: 300 Gallons

Accommodations

Total Cabins: 2

Sleeps: 4

Total Heads: 1

Hull and Deck Information

Hull Material: Fiberglass

Engine Information

Engines: 2

Manufacturer: Mercury Mercruiser

Model: 8.1

Engine Type: Inboard

Fuel Type: Gas

PHOTOS

P4221088



P4221090



P2100965



P2100966



P2100967



P2100968



P2100969



P2100970



P2100971



P2101009



P2101008



P2101007



P2100972



P2100973



P2100974



P2100975



P2100976



P2101000



P2100977



P2100978



P2100979



P2100980



P2100999



P2100981



P2100982



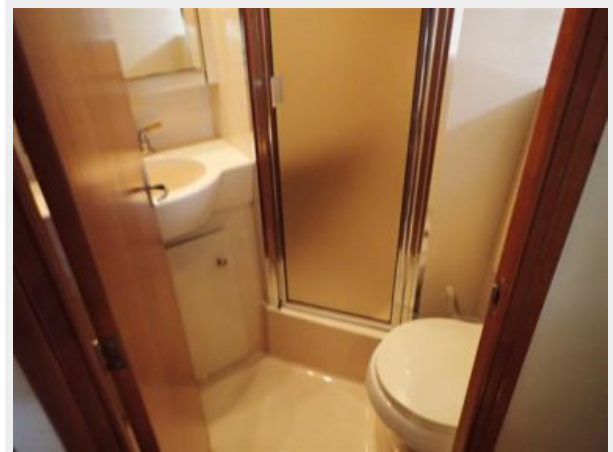
P2100983



P2100984



P2100985



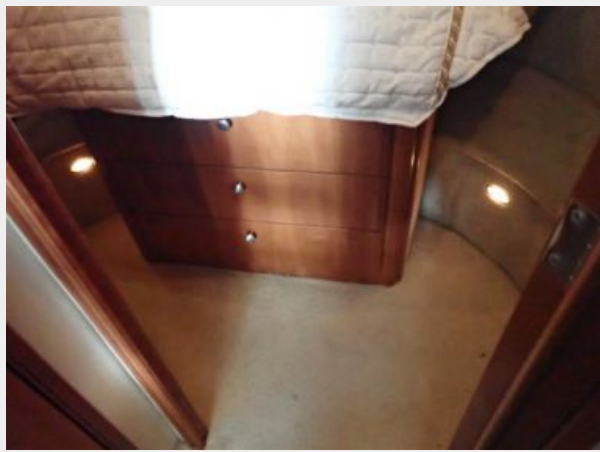
P2100986



P2100987



P2100988



P2100989



P2100990



P2100991



P2100992



P2100993



P2100994



P2100995



P2101014



P2101010



P2101011



P2101012



P2101013



P2101015



P2101001



P2101002



P2101003



P2101005



CONTACTS

Andrey Shestakov, leading yacht broker of the sales department of Shestakov Yacht Sales Inc. Shestakov Yacht Sales Inc., the official representative of the Miami/Fort Lauderdale FL headquarters.

Contact details

Email: andrey@shestakovyachtsales.com

Web: shestakovyachtsales.com/en/

Telephones

USA: +1(954)274-4435

Office hours

Monday – Saturday: **9:00 - 21:00** EDT

Sunday: **closed**

Address



Harbour Towne Marina, 850 NE 3rd St,
STE 213, Dania, FL 33004