

NO NAME — INTREPID



Builder: INTREPID

Year Built: 2004

Model: Center Console

Price: PRICE ON APPLICATION

Location: United States

LOA: 30' 0" (9.14m)

Beam: 9' 6" (2.90m)

Min Draft: 2' 0" (0.61m)

Cruise Speed: 30 Kts. (35 MPH)

Max Speed: 64 Kts. (74 MPH)

Our experienced yacht broker, Andrey Shestakov, will help you choose and buy a yacht that best suits your needs **No Name — INTREPID** from our catalogue. Presently, at Shestakov Yacht Sales Inc., we have a wide variety of yachts available on our sale's list. We also work in close contact with all the big yacht manufacturers from all over the world.

If you would like to buy a yacht **No Name — INTREPID** or would like help answering any questions concerning purchasing, selling or chartering a yacht, please call **+1(954)274-4435**

TABLE OF CONTENTS

TABLE OF CONTENTS	2
SPECIFICATIONS	5
Overview	5
Basic Information	5
Dimensions	5
Speed, Capacities and Weight	5
Accommodations	5
Hull and Deck Information	6
Engine Information	6
DETAILED INFORMATION	7
MAIN DESCRIPTION	7
Overview:	7
Electronics	7
ENGINES	8
TRAILER	8
Extras	8
DISCLAIMER	8
Exclusions	8
Disclaimer	9
PHOTOS	10
1 No Name 2004 30' Intrepid	10
2- Bow main	10
3- Overall Helm	10
4- Steering	10
5- Throttles	11
6- GPS	11
7- Switches	11
8- Batteries	11

9- Bow	12
10- Head	12
11- Bow Locker	12
12- Rod Locker	12
13- Port Side looking back	13
14- Front console	13
15- Cooler	13
16- Helm 2	13
17- Cabin 1	14
18- Cabin 2	14
19- Tuna 2	14
20- Tuna 1	14
21- Storage	15
22- Hatch 3	15
23- Hatch 2	15
24- Hatch 1	15
25- Stern	16
26- Stern Port	16
27- Engines 1	16
28- Side	16
29- Starboard Side	17
30- Side 2	17
31- Over View Int. '04	17
32- Trailer 2	17
33- Bow Port	18
34- Trailer 1	18
CONTACTS	19
Contact details	19
Telephones	19

Office hours	19
Address	19

SPECIFICATIONS

Overview

Over \$25,000 Price Drop!!! Owner needs to move this boat fast!!! This 2004 30 Intrepid Center Console is a bench mark boat that came with a single step hull which provides a fast and dry ride. This is powered by twin 2016 Yamaha 250hp outboards. The boat has been professionally refitted, including new paint throughout (top side, main hull, bottom and cabin), along with all new electronics. If youre looking for day trips to the Bahamas or to fish offshore this will be a perfect boat. It has ample amount of storage and space, including a new 10,500 lb triple axle trailer. If youre looking for a solid, reliable and a dry ride, this is the boat. Add a T-Top and a livewell, youll have the ultimate fishing machine. Bring Offers!! Owner is looking to move this boat fast!!

Basic Information

Category: Center Console

Model Year: 2004

Year Built: 2004

Country: United States

Dimensions

LOA: 30' 0" (9.14m)

Beam: 9' 6" (2.90m)

Min Draft: 2' 0" (0.61m)

Speed, Capacities and Weight

Cruise Speed: 30 Kts. (35 MPH)

Max Speed: 64 Kts. (74 MPH)

Fuel Capacity: 200 Gallons

Accommodations

Total Heads: 1

Hull and Deck Information

Hull Material: Fiberglass

Engine Information

Engines: 2

Manufacturer: Yamaha

Model: 250 HP

Engine Type: Outboard

Fuel Type: Gas/Petrol

DETAILED INFORMATION

MAIN DESCRIPTION

Over \$25,000 Price Drop!!! Owner needs to move this boat fast!!!

This 2004 30' Intrepid Center Console is a bench mark boat that came with a single step hull which provides a fast and dry ride. This is powered by twin 2016 Yamaha 250hp outboards. The boat has been professionally refitted, including new paint throughout (top side, main hull, bottom and cabin), along with all new electronics. If you're looking for day trips to the Bahamas or to fish offshore this will be a perfect boat. It has ample amount of storage and space, including a new 10,500 lb triple axle trailer.

If you're looking for a solid, reliable and a dry ride, this is the boat.

Add a T-Top and a livewell, you'll have the ultimate fishing machine.

Overview:

When approaching the boat you will notice the \$25k bright blue paint on the hull, inside the boat was painted in all white Awlgrip and the bottom was completed with the extended Interlux paint. The starboard side has a "dive door" for easy access to enter the boat or to bring up your fish. Once onboard you will notice the new nonskid flooring and new solid stainless steel latches for all storage compartments which can store large fish, bait, ice or dry storage. The helm has been updated with a large leaning post which can store a cooler underneath. The helm has been updated with new electronics, streamlining the old clutter. All hardware has been replaced including hinges, pop-up cleats and fasteners along with new bright white upholstery. In front of the console, the seat holds a large cooler with a drain that can be used for storage or ice.

Electronics

- Humminbird 999ci HD Sonar GPS
- Icom VHF Marine IC-m424g
- Fusion Radio MS-RA70 nsx
- Yamaha Electronic Digital onboard management system
- Yamaha Electronic Throttle controls
- 4 x Marine Speakers

- Forward spotlight with joystick
- Trim Tabs
- 2 New Batteries

ENGINES

- Twin Yamaha 250hp
- F250-V6 4.2L Outboard motors
- Gear Ratio 1.75:1
- Dry Weight: 255 kg (562 lbs)
- Painted matching cowls

TRAILER

- Tropic Trailer
- 3 Axle
- 10,500 lbs
- Hydraulic Brakes
- Spare Tire

Extras

- New Porta Potti
- Wash Down
- New Bimini top
- New Canvas for the console
- New Solid constructed bolster helm seat
- Solid constructed mounting bracket in the stern for any mounting equipment

DISCLAIMER

The Company offers the details of this vessel in good faith but cannot guarantee or warrant the accuracy of this information nor warrant the condition of the vessel. A buyer should instruct his agents, or his surveyors, to investigate such details as the buyer desires validated. This vessel is offered subject to prior sale, price change, or withdrawal without notice.

Exclusions

Owner's personal belongings.

Disclaimer

The Company offers the details of this vessel or yacht in good faith but cannot guarantee or warrant the accuracy of this information nor warrant the condition of the vessel. A buyer should instruct his representatives, agents, or his surveyors, to investigate such details as the buyer desires validated. This vessel or yacht is offered subject to prior sale, price change, or withdrawal without notice.

PHOTOS

1 No Name 2004 30' Intrepid



2- Bow main



3- Overall Helm



4- Steering



5- Throttles



6- GPS



7- Switches



8- Batteries



9- Bow



10- Head



11- Bow Locker



12- Rod Locker



13- Port Side looking back



14- Front console



15- Cooler



16- Helm 2



17- Cabin 1



18- Cabin 2



19- Tuna 2



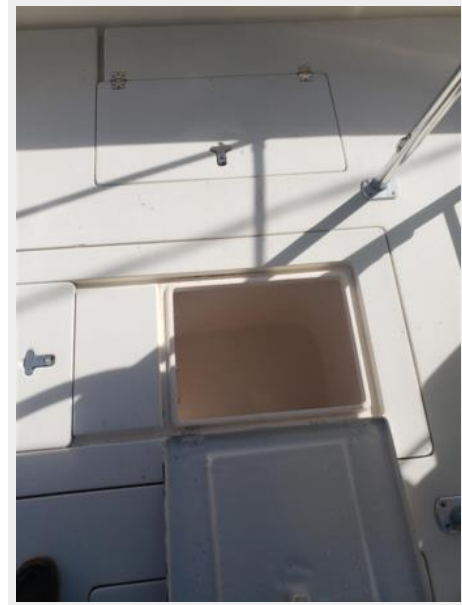
20- Tuna 1



21- Storage



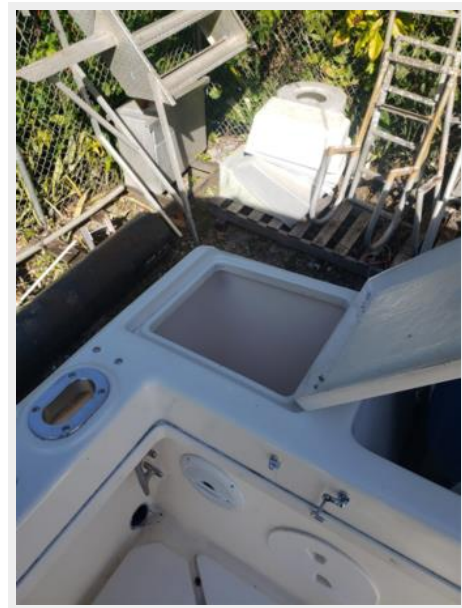
22- Hatch 3



23- Hatch 2



24- Hatch 1



25- Stern



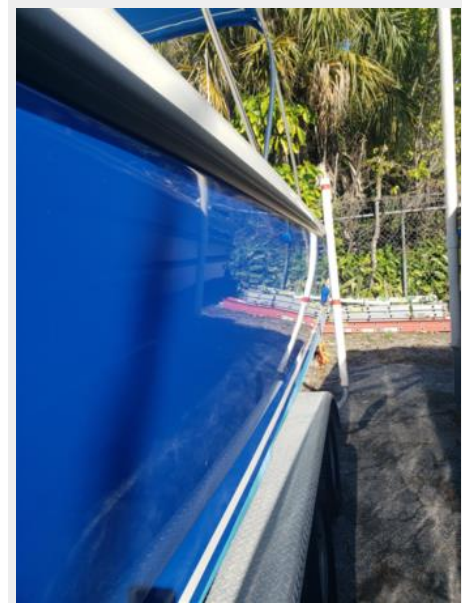
26- Stern Port



27- Engines 1



28- Side



29- Starboard Side



30- Side 2



31- Over View Int. '04



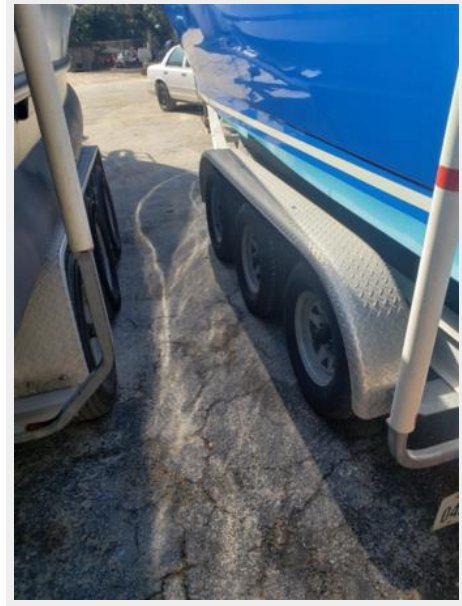
32- Trailer 2



33- Bow Port



34- Trailer 1



CONTACTS

Andrey Shestakov, leading yacht broker of the sales department of Shestakov Yacht Sales Inc. Shestakov Yacht Sales Inc., the official representative of the Miami/Fort Lauderdale FL headquarters.

Contact details

Email: andrey@shestakovyachtsales.com

Web: shestakovyachtsales.com/en/

Telephones

USA: +1(954)274-4435

Office hours

Monday – Saturday: **9:00 - 21:00** EDT

Sunday: **closed**

Address



Harbour Towne Marina, 850 NE 3rd St,
STE 213, Dania, FL 33004