

## AURAE — HUNTER



**Builder:** HUNTER

**Year Built:** 2005

**Model:** Cruising Sailboat

**Price:** PRICE ON APPLICATION

**Location:** United States

**LOA:** 33' 6" (10.21m)

**Beam:** 11' 6" (3.51m)

**Max Draft:** 4' 6" (1.37m)

Our experienced yacht broker, Andrey Shestakov, will help you choose and buy a yacht that best suits your needs **Aurae — HUNTER** from our catalogue. Presently, at Shestakov Yacht Sales Inc., we have a wide variety of yachts available on our sale's list. We also work in close contact with all the big yacht manufacturers from all over the world.

If you would like to buy a yacht **Aurae — HUNTER** or would like help answering any questions concerning purchasing, selling or chartering a yacht, please call **+1(954)274-4435**

# TABLE OF CONTENTS

TABLE OF CONTENTS	2
SPECIFICATIONS	5
Basic Information	5
Dimensions	5
Speed, Capacities and Weight	5
Accommodations	5
Hull and Deck Information	5
Engine Information	6
DETAILED INFORMATION	7
Description	7
Overview	7
Exclusions	11
Disclaimer	11
PHOTOS	12
2	12
3	12
4	12
5	12
6	12
7	12
8	13
9	13
10	13
11	13
12	13
13	13
14	13
15	13

---

16	14
17	14
18	14
19	14
20	14
21	14
22	14
23	14
24	15
25	15
27	15
26	15
29	16
28	16
30	16
31	16
32	16
33	16
34	17
35	17
36	17
37	17
38	17
39	17
40	17
41	17
42	18
43	18
45	18

---

---

44	18
46	18
47	18
48	18
49	18
51	19
50	19
52	19
<b>CONTACTS</b>	<b>20</b>
Contact details	20
Telephones	20
Office hours	20
Address	20

---

# SPECIFICATIONS

---

## Basic Information

---

**Category:** Cruising Sailboat

**Model Year:** 2005

**Year Built:** 2005

**Country:** United States

## Dimensions

---

**LOA:** 33' 6" (10.21m)

**LWL:** 29' 5" (8.97m)

**Beam:** 11' 6" (3.51m)

**Max Draft:** 4' 6" (1.37m)

**Clearance:** 55' 0" (16.76m)

## Speed, Capacities and Weight

---

**Displacement:** 11016 Pounds

**Water Capacity:** 50 Gallons

**Holding Tank:** 25 Gallons

**Fuel Capacity:** 25 Gallons

## Accommodations

---

**Total Cabins:** 2

**Total Berths:** 4

**Total Heads:** 1

## Hull and Deck Information

---

**Hull Material:** Fiberglass

---

## Engine Information

---

**Engines:** 1

**Manufacturer:** Yanmar

**Model:** 3YM30

**Engine Type:** Inboard

**Fuel Type:** Diesel

---

# DETAILED INFORMATION

---

## Description

---

AURAE2005 Hunter 33 This boat is a great couple's or small family boat for those looking to weekend, take extended vacations or do some coastal cruising. This boat provides a great combination of comfort and sailing performance with contemporary styling. The newer hull design carries the beam further aft providing for more storage and a roomy feel. The draft is shallow with a 4'-6" draft wing keel with a bulb. Combine this with a B & R fractional rig, both headsail and mainsail are roller furling making for an easy to handle rig. The decks are both wide and clear of obstruction making for easy and safe access to the foredeck. For more added convenience the main sail traveler is mounted above the stainless steel arch making sheet handling a breeze from the helm. Below deck there is a large galley to port complete with built in microwave, propane stove with oven, and both a front loading refrigerator and a top load icebox. Plenty of both counter space, above counter storage and hidden trash receptacle. To starboard and aft is the aft cabin with a large berth and plenty of both hanging and shelved storage lockers. Just forward of the aft cabin is the head. This space is molded white fiberglass with vanity, storage and sink, an electric head and shower. Forward of the head and galley is the salon. To port is a large U-shaped settee with a straight bench to starboard. The table may be lowered to provide a third double berth. On the starboard side just aft of the settee is the nav station complete with electric panels for both 12v. and 120v. Moving forward into the guest cabin there is a small seat to port and hanging locker to starboard. The V-berth is quite large with small storage at the aft end. This boat is in beautiful condition throughout with many upgrades. The interior has extensive use of teak which has a satin finish and maintenance free laminate cabin sole. She is complete and ready to go sailing.

## Overview

---

### DECK and HULL

- One Piece Molded Fiberglass Deck w/ Integrated Swim Platform and Balsa Core Reinforced
- Molded Swim Platform
- Molded Non-Skid Walk Surfaces
- One Piece Molded Fiberglass Hull w/ Balsa Cored Hull Sides
- Solid FRP Bottom w/ Structural Grid Reinforcement
- Through Bolted Hull / Deck Joint
- Shoal Draft Wing Keel
- Balanced Spade Rudder w/ Composite Shaft
- Anchor Roller
- Molded Anchor Well w/ Electric Windlass

- Bronze Through-Hull Fittings Below Waterline
- Dorade Vent
- Bow Pulpit (Double Stainless Steel)
- Stern Pulpits (Double Stainless Steel w/ Seats)
- Double Lifelines
- Swim Ladder (Stainless Steel, Telescoping)
- Rub Rail (Full Surround with Stainless Steel Insert)
- Coach Roof Grab Rails (Stainless Steel)
- Cockpit Arch (Stainless Steel w/ Main Sheet Traveler)
- Opening Hatches (2)
- NEW 2019 (2) Opening Portlights (Lewmar)
- Bow Cleats (2 Stainless Steel)
- Spring Cleats (2 Stainless Steel)
- Stern Cleats (2 Stainless Steel)

## COCKPIT DETAILS

- Large Cockpit Storage Locker (Port)
- Cockpit Locker (Stbd. Aft)
- Propane Locker (Port Aft)
- Stern Rail Seats
- Halyard Stowage Wells
- Hinged Helmsman Seat (Provides Swim Platform Access)
- Integral Cockpit Grab Rail and Fold Out Table
- Integrated Wheel Console Including: Lewmar® Direct Drive Steering System w/Single Lever Engine Control, Wheel Brake, Lighted Compass, & Stainless Steel Wheel Guard
- Stainless Steel Folding Destroyer Wheel
- NEW 2020 Leather Wheel Wrap
- Manual Bilge Pump
- Walk-Through Transom

## KEEL DETAILS

- Shoal Draft (4'-6")
- Short Wing w/ Bulb

## GALLEY

- Corian® Countertop
- Built-In Trash Receptacle
- Gimballed Stove w/Oven (Stainless Steel 2 Burner LPG Stove)
- Front loading refrigerator
- Sink (Single Bowl, Stainless Steel)
- Storage Above and Below Countertop

## ELECTRICAL 120 Volt



- 120v. Inlet (2)
- 120v. Power Cords (2)
- Breaker Panel
- Volt Meter
- Air Conditioning (Reverse Cycle Heat Pump)
- Microwave
- Battery Charger
- Water Heater

## 12 Volt

- Battery Cutoff Switches
- NEW 2019 House and Engine Batteries (AGM)
- Breaker Panel w/Volt Meter
- Cabin Lighting
- Navigation Lights
- Steaming Light
- Anchor Light
- Fresh Water Pressure Pump
- Shower Sump Pump
- Bilge Pump (Automatic)
- AC Outlets Throughout Boat
- Tank Gauges (Fuel, Water & Waste)
- New 2018 Stereo (Fusion MS-UD765 Blue Tooth)
- New 2018 Additional Zone Amp for Cockpit
- Salon Speakers (1 set)
- Cockpit Speakers (1 set)
- TV (Sharp)
- DVD Player (FlexVision)
- Head
- Windlass
- NEW 2018 Bowthruster (Sidepower SE40 w/Dedicated Battery & Charger)
- Macerator
- Panel Lights
- 12 Volt Outlet

## ELECTRONICS

- NEW 2018 Chartplotter (Raymarine Hybridtouch)
- NEW 2018 Charts (Navionics)
- NEW 2018 AIS Transceiver & GPS Antenna (Raymarine)
- NEW 2017 Autopilot (Raymarine Evolution)
- NEW 2018 VHF Command Mic at Helm
- VHF Radio (ICOM IC-M402)
- Depth Sounder (Raymarine ST60)

- Knot Meter (Raymarine ST60)
- Wind Direction/Wind Speed (Raymarine ST60)
- Compass (Danforth Global Balance)

## RIGGING

- Anodized B&R Backstayless Rig (Selden)
- Rigid Boom Vang
- Furling Jib (110% w/Suncover)
- Jib Furling System
- Inboard Jib Track w/Adjustable Cars
- Internal Halyards Led to Cockpit
- In-mast Furling System (Selden)
- Roller Furling Main Sail
- Mainsheet on Arch
- (2) Self-Tailing Winches(Lewmar Single Speed #16,Coach Roof)
- (2) Self-Tailing Winches (Lewmar Cockpit)
- (2) Sets Triple Line Stoppers and Organizers

**MANUFACTURE DESCRIPTION**The underbody of the 33 is similar to other Henderson - Hunter designs, to include the 41 and 44-foot models. Bringing the beam well aft to provide interior space, but not sacrificing performance has worked extremely well in his innovative designs. The deck is wide and workable without intrusions. The cockpit can hold a crowd under sail or at the dock, but is also set up to sail easily single handedly. Accommodations include a large, aft master stateroom with plenty of storage and headroom. The galley is complete with Corian® counters, a two-burner range, icebox and a deep, single basin stainless steel sink. Even the non-skid dishware is included. Entertaining or fortifying the crew is easy in a massive salon and guests will appreciate the privacy of the forward v-berth stateroom.**ENGINE**

- Brand (Yanmar)
- Model (3YM30)
- Horsepower (29 HP)
- Hours (850)
- NEW 2018 Hour Meter
- New 2019 Cutlass Bearing
- New 2019 Impeller
- New 2017 Exhaust Elbow and Manifold Flange

## TANKS

- Fresh Water (50 Gallons)
- Fuel (25 Gallons)
- Holding (25 Gallons)

## PLUMBING

- Fresh Water (50 Gallon)
- Water Heater (5 Gallon Electric & Engine)
- Waste Capacity (25 Gallon)
- Macerator Pump
- Shower Sump Pump
- Fresh Water Pump
- Head (Electric)
- Cockpit Shower (Hot & Cold)
- Bilge Pump (Electric, Automatic & Manuel)
- Bilge Pump (Mechanical)

## MISCELLANEOUS

- Fire Extinguishers (2)
- Carbon Monoxide Alarm
- Smoke Alarm
- Emergency Tiller
- Arch Mounted Bimini
- Accordion Window Shades
- Cockpit Cushions

## RECENTLY SERVICED

- Bottom Sand Blasted, Hand Sanded With 1 Coat Hard Bottom Paint and 2 Coats Ablative Bottom Paint 2018, Renewed 2019
- Service Furlex Roller Furling 2018
- Repair of Engine Raw Water Cooling Water Vented Loop and Hose Connection 2017

## Exclusions

---

Owner's personal belongings.

## Disclaimer

---

The Company offers the details of this vessel or yacht in good faith but cannot guarantee or warrant the accuracy of this information nor warrant the condition of the vessel. A buyer should instruct his representatives, agents, or his surveyors, to investigate such details as the buyer desires validated. This vessel or yacht is offered subject to prior sale, price change, or withdrawal without notice.

# PHOTOS

2



3



4



5



6



7



8



9



10



11



12



13



14



15





16



17



18



19



20



21



22



23



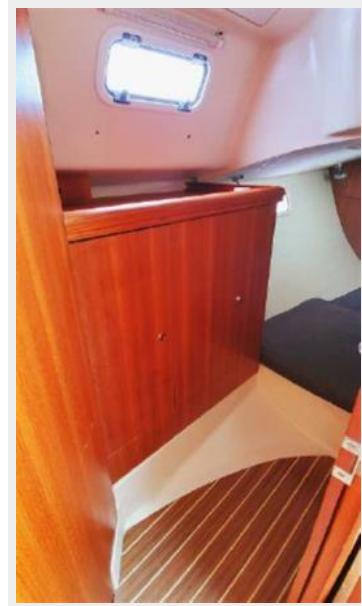
24



25



27



26



28



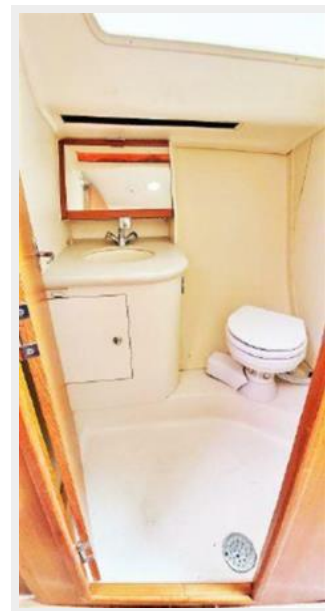
29



30



31



32



33





34



35



36



37



38



39



40



41



42



43



44



45



46



47



48



49





50



51



52



# CONTACTS

---

Andrey Shestakov, leading yacht broker of the sales department of Shestakov Yacht Sales Inc. Shestakov Yacht Sales Inc., the official representative of the Miami/Fort Lauderdale FL headquarters.

## Contact details

---

Email: [andrey@shestakovyachtsales.com](mailto:andrey@shestakovyachtsales.com)

Web: [shestakovyachtsales.com/en/](http://shestakovyachtsales.com/en/)

## Telephones

---

USA: +1(954)274-4435

## Office hours

---

Monday – Saturday: **9:00 - 21:00** EDT

Sunday: **closed**

## Address

---



Harbour Towne Marina, 850 NE 3rd St,  
STE 213, Dania, FL 33004