

## UNSTABIL — HATTERAS



**Builder:** HATTERAS

**Year Built:** 2007

**Model:** Motor Yacht

**Price:** PRICE ON APPLICATION

**Location:** United States

**LOA:** 64' 0" (19.51m)

**Cruise Speed:** 26 Kts. (30 MPH)

**Max Speed:** 28 Kts. (32 MPH)

Our experienced yacht broker, Andrey Shestakov, will help you choose and buy a yacht that best suits your needs **Unstabil — HATTERAS** from our catalogue. Presently, at Shestakov Yacht Sales Inc., we have a wide variety of yachts available on our sale's list. We also work in close contact with all the big yacht manufacturers from all over the world.

If you would like to buy a yacht **Unstabil — HATTERAS** or would like help answering any questions concerning purchasing, selling or chartering a yacht, please call **+1(954)274-4435**

# TABLE OF CONTENTS

|                                    |    |
|------------------------------------|----|
| TABLE OF CONTENTS                  | 2  |
| SPECIFICATIONS                     | 6  |
| Basic Information                  | 6  |
| Dimensions                         | 6  |
| Speed, Capacities and Weight       | 6  |
| Accommodations                     | 6  |
| Hull and Deck Information          | 6  |
| Engine Information                 | 6  |
| DETAILED INFORMATION               | 7  |
| Short List of Recent Maintenance   | 7  |
| Option List Includes               | 7  |
| Vessel Walkthrough                 | 8  |
| Aft Deck                           | 8  |
| Salon                              | 9  |
| Galley                             | 9  |
| Pilothouse                         | 10 |
| Master Stateroom                   | 11 |
| Master Head                        | 12 |
| Guest Stateroom ( Port Side)       | 12 |
| Guest / Day Head                   | 12 |
| VIP Stateroom / Forward            | 12 |
| VIP Head                           | 13 |
| Foredeck                           | 13 |
| Fly Bridge                         | 14 |
| Flybridge / Navigation Electronics | 15 |
| Aft Crew Area                      | 16 |
| Electrical                         | 16 |
| Engine Room                        | 17 |

|            |    |
|------------|----|
| Exclusions | 19 |
| Disclaimer | 19 |
| Exclusions | 19 |
| Disclaimer | 19 |
| PHOTOS     | 20 |
| IMG_9681   | 20 |
| IMG_9682   | 20 |
| IMG_9683   | 20 |
| IMG_9684   | 20 |
| IMG_9688   | 20 |
| IMG_9679   | 20 |
| IMG_9677   | 21 |
| IMG_9670   | 21 |
| IMG_9675   | 21 |
| IMG_9676   | 21 |
| IMG_9640   | 21 |
| IMG_9641   | 21 |
| IMG_9642   | 22 |
| IMG_9643   | 22 |
| IMG_9664   | 22 |
| IMG_9665   | 22 |
| IMG_9666   | 22 |
| IMG_9668   | 22 |
| IMG_9647   | 23 |
| IMG_9648   | 23 |
| IMG_9650   | 23 |
| IMG_9652   | 23 |
| IMG_9653   | 23 |
| IMG_9654   | 23 |

|          |    |
|----------|----|
| IMG_9655 | 24 |
| IMG_9656 | 24 |
| IMG_9657 | 24 |
| IMG_9660 | 24 |
| IMG_9592 | 24 |
| IMG_9593 | 24 |
| IMG_9596 | 25 |
| IMG_9599 | 25 |
| IMG_9600 | 25 |
| IMG_9604 | 25 |
| IMG_9605 | 26 |
| IMG_9606 | 26 |
| IMG_9612 | 26 |
| IMG_9614 | 26 |
| IMG_9618 | 27 |
| IMG_9616 | 27 |
| IMG_9620 | 27 |
| IMG_9695 | 27 |
| IMG_9621 | 27 |
| IMG_9622 | 27 |
| IMG_9624 | 28 |
| IMG_9631 | 28 |
| IMG_9634 | 28 |
| IMG_9635 | 28 |
| IMG_9636 | 28 |
| IMG_9639 | 28 |
| IMG_9661 | 29 |
| IMG_9691 | 29 |
| IMG_9694 | 29 |

|                 |    |
|-----------------|----|
| CONTACTS        | 30 |
| Contact details | 30 |
| Telephones      | 30 |
| Office hours    | 30 |
| Address         | 30 |

# SPECIFICATIONS

---

## Basic Information

---

**Category:** Motor Yacht

**Model Year:** 2007

**Year Built:** 2007

**Country:** United States

## Dimensions

---

**LOA:** 64' 0" (19.51m)

## Speed, Capacities and Weight

---

**Cruise Speed:** 26 Kts. (30 MPH)

**Cruise Speed Range:** 302

**Max Speed:** 28 Kts. (32 MPH)

## Accommodations

---

**Total Cabins:** 3

## Hull and Deck Information

---

**Hull Material:** Fiberglass

## Engine Information

---

**Engines:** 2

**Manufacturer:** Caterpillar

**Model:** C32

**Engine Type:** Inboard

**Fuel Type:** Diesel

---

# DETAILED INFORMATION

---

---

## Short List of Recent Maintenance

---

### 2020:

- New Savuary Co2 and Smoke Detectors
- New Sun Pads and Covers (January)
- New Helm Cushions & Cockpit Cover (January)
- New Dinette Table Cushions (February)
- (2) New Headhunter Mach5 Pumps (March)
- Replaced (3) HVAC units (June)

New aft deck railing and sunshade

### 2019:

- Service Engines, Generators, and Transmissions (April)
- Bottom Job, Props Tuned, and Cutlass Bearings replaced (November)
- New Underwater Lights (November)

### 2018:

- After cooler update, Heat Exchangers, Tune-up (July)
- Complete Eisenglass Enclosure (August)

---

## Option List Includes

---

- CAT C32 1550HP Engines
- Twin 21kW Generators
- Bow & Stern Thrusters
- Wesmar Fin Stabilizers with Digital Controls
- Large walk-in Master shower Bosch Washer/Dryer All in one media remotes Garmin Touch-screen Plotters (Upper/lower)

- Tide Slide boarding stairs
- Aft Docking Station Crew Quarters with Transom Door
- Flybridge double Grill set-up
- African Mahogany Wood throughout
- Enclosed Air Conditioned Flybridge Pipewelder's Hardtop
- Stainless steel Swim Platform rails (Removable)
- Custom Teak Aft Deck table
- Bow and Stern Shore Power connections
- Teak Aft Deck
- Teak flooring

---

## Vessel Walkthrough

---

Entering the yacht via the generous molded Swim Platform with Teak decking, there are three Teak steps to the Aft Deck on the starboard side. The Aft Deck has built-in seating aft, a table, steps to the port and starboard side decks and Teak steps to the Flybridge to starboard.

The Salon is entered through a sliding stainless steel door. The open deck plan makes for a feeling of spaciousness that flows from the Salon through the Galley and Dinette right up to the centerline Lower Station Controls.

Steps next to the Lower Station lead to the three staterooms, each en-suite. The Master is midship and full-beam (unlike four cabin versions). The VIP is forward and the Twin Berth Cabin is to port.

The Flybridge is accessed via inside stairs as well as those from the Aft Deck. It is enclosed with a fiberglass Hardtop, clear enclosure and is fully air conditioned.

Crew Quarters and Engine room are accessed via a walkthrough door in the Transom or a hatch in the Aft Deck is a single Crew Cabin with head.

---

## Aft Deck

---

- Custom hinged stainless gate in lieu of chain gate from Aft Deck to steps for Swim Platform  
AC duplex GFCI protected outlet
- (4) AC Stainless steel trimmed lights in hardtop overhead
- Molded Fiberglass steps to side decks, Swim Platform, and Flybridge



- Welded and polished stainless steel 3-panel door to Salon with sliding center panel
- (2) Pioneer Stereo speakers with volume control
- Molded bench seating for five with upgraded Sunbrella cushions and cover Custom Aft Deck table with high-gloss varnish and cover
- Large deck access hatch to Utility Room and Engine Room on gas chocks
- Marquipt Tide Ride ladder stored on Aft Deck with cover
- Molded Fiberglass Swim Platform (Sport Deck) with Teak deck covering Freshwater wash-down outlet with Quick Disconnect hose connection
- (5) Stainless steel hoop rails at Swim Platform with (2) place storage receptacles at Transom
- (2) Pop-up cleats for tender mooring at Swim Platform
- Telephone/CATV inlets with cords behind hinged door
- (2) 50 Amp shore cord reels behind hinged
- Fender tracks on hull sides custom extended forward
- Engine and generator exhaust exits through hull side near Transom
- Hidden drop down Aft Deck full engine clutch & throttle controls including both thrusters
- Hot and cold shower aft

## Salon

---

- African Mahogany stainless steel sliding entrance door (aft)
- L-Shaped leather sofa with storage below
- Burlwood and glass coffee table
- (2) Club chairs
- Storage Cabinet
- 42" TV
- SMX Air conditioning digital control
- Icemaker
- Hatteras electrical panel Duette Blinds (Side windows) Hunter Douglas door blinds Electrical panel

## Galley

---

The Galley is open to the Salon and three steps up to the starboard side. To starboard there is a Pantograph-style door to the starboard side deck. The Galley itself is U-shaped facing forward. The Galley is open to the Dinette located forward port side and accommodates four to five with

storage below. The top is matching Kosmos Supreme.

Equipment includes:

- Dinette with storage below
- Twin Sub-Zero 700 BR under counter refrigerator double drawer unit
- Custom Frigidaire Oven
- Kitchen Air 4-burner ceramic
- Sharp Carousel Microwave convection oven built-in above countertop with light and exhaust fan
- Badger 1/2 HP Garbage disposal
- FCI Watermaker remote control panel
- Dual position analog water level gauge
- (18) Mahogany finish cabinet doors above and below countertop
- (5) Storage drawers with Mahogany finish
- Custom Kosmos Supreme granite countertops with bull-nose edge
- Under mount Franke stainless steel sink with removable spray faucet
- Soap dispenser
- (4) Drawers with a granite top forward of the side door facing the Galley
- Digital SMX AC controls
- (5) Halogen mini spots above
- (5) LED Under counter lights
- (3) Centrally located GFCI under Galley sink
- The sole is Amtico Vinyl strip flooring

## Pilothouse

---

Open to the Galley, Dinette and Salon aft, the centerline Lower Helm of this 64 Hatteras offers great visibility in all directions. The mullions between the 3-panel windshield are padded Ultra Vinyl, as well as the areas around the large size safety glass windows.

Equipment includes:

- Garmin 15" Touch Screen Chart Plotter
- Furuno 15" Navnet display for radar and chart plotting and video depth
- Navnet flush-mounted control panel
- Simrad AP25 Autopilot control head
- 72 Mile Furuno 1954 CBB with open array antenna
- Icom IC-M604 VHF with remote mounted mic
- (2) CAT LCD Digital ECM displays
- American Bow Thruster bow and stern thruster controls integrated into one panel Electric defogger fans
- Hydraulic Power-Assist steering
- Ritchie Powerdamp Compass with dimmable light

- CAT Controls
- Electronic synchronizer
- Pompanette Custom helm chair, upholstered in Ultra Leather
- ACR Point Pad Searchlight controls
- (2) VDO Electric fuel gauges
- (2) VDO Analog voltmeters
- Hatteras LCD alarm panel
- Trim tab controls
- Fuel transfer controls
- Battery parallel switch
- Nav Light controls
- (5) Bilge pump controls
- Emergency manual clutch and throttle controls in cabinet to starboard
- (2) Red night running lights over Helm on a dimmer
- Wesmar digital stabilizer controls
- Central vacuum outlet

---

## Master Stateroom

---

- The cabin is full-beam, centerline, featuring a King bed, and private en-suite head with custom walk-in shower
- Zeno Custom King-sized mattress with under berth rope lighting
- (2) 3-Drawer nightstands (port & starboard)
- Reading lights
- Storage lockers (port & starboard)
- DVD Player & LED TV
- Digital safe
- His & hers, 6-dresser drawers (port & starboard)
- Twin cedar-lined hanging locker
- Full-length mirror
- SMX Digital AC controls
- Tray ceiling

---

## Master Head

---

- Accessed only from the Master and features a sole that is marble that continues into the walk-in shower
- Mahogany Vanity with storage drawers & Kosmos Supreme granite countertop
- Walk-in shower with marble tiles and glass door
- Undermount sink
- Headhunter toilet (freshwater)
- Marble sole
- Vent fan

---

## Guest Stateroom ( Port Side)

---

- Upholstered headboard
- Mahogany nightstand with (3) drawers
- Cedar-lined hanging locker
- 20" LCD TV
- DVD Player
- Full-length mirror
- SMX AC Controls • A private entrance to the third Head is most forward

---

## Guest / Day Head

---

With its dual access doors the Port Guest Head located just forward of the base of the accommodations stairs also serves as the Day Head

- Mahogany vanity with Mosaic countertop
- Undermount Kohler sink and single lever faucet
- (2) Mirrored medicine cabinet doors
- Shower with Plexiglass door, seat, shelf, and light • AC Exhaust fan
- Headhunter Toilet (freshwater)
- Mosaic tile sole

---

## VIP Stateroom / Forward

---

The VIP is a forward stateroom featuring a centerline queen berth and private head.

- Queen-size centerline berth with rope lighting below Cedar-lined storage below berth
- Cedar-lined hanging lockers
- Upholstered headboard with mirrored bulkhead
- Access panel to the chain locker forward hidden by mounted artwork
- Overhead screened deck hatch with privacy shade
- Mahogany nightstands
- Storage cabinets
- 20" LCD TV
- DVD Player
- SMX AC Controls

## VIP Head

---

Accessed only from the VIP Stateroom is the VIP Head.

- Mahogany vanity with undermount Kohler sink
- Two mirrored medicine cabinet doors are above the sink
- Headhunter toilet (freshwater)
- Shower with clear Plexiglass curved door, seat and light
- AC Exhaust fan, air conditioning outlet, rope lights at the toe kick, light and a mirrored overhead
- Oceanside glass tile sole

## Foredeck

---

- Fiberglass non-skid decks
- Maxwell vertical windlass upgraded to Model 1700
- Polished stainless steel anchor chute with roller
- Up and down deck switches for Windlass
- 100 Lb. Ultra Anchor with 300ft. 5/16 chain (New)
- Stainless steel bow rails w/pennant staff
- (4) Spring line cleats
- Dual air horns

- Sun pads and covers (New)
- Full walk-around side decks with handrails
- Frameless windows, front & sides with tinted safety glass
- Bomar Opaque deck hatch into VIP
- International navigation lights
- (3) Speich Windshield wipers & washers
- Black Textulene windshield cover with solid white cover that can be piggy-backed for full sun protection
- ACR Searchlight on brow of Flybridge
- Pantograph side door to Galley on starboard side, modified for ease of side deck passage
- Textulene Pilothouse window covers
- Custom twin 50 amp 220V portside bow power hook-up
- Starboard side rail break for boarding

## Fly Bridge

---

- Molded non-skid fiberglass deck with removable carpet
- Polished stainless steel grab rails and stanchions
- Tinted acrylic windscreen with stainless rail
- Eisenglass Enclosure (New)
- Centerline helm
- Helm cover
- Radar arch with masthead light and anchor light
- Pipewelder's custom fiberglass hardtop integrated to arch with (8) dimmable blue LED overhead lights
- Pompanette helm and companion seat with covers (Stidd type) with fold-down footrests
- L-shaped Lounge with custom cushions, cover and storage below
- Hinged door to Pilothouse

- Pioneer speakers with volume control
- Wet bar with sink, molded top, and U-Line refrigerator behind aft door
- Absolute Black granite table with (2) stainless steel bases
- Nautical Structures 1100 lb. fully-hydraulic Davit
- UMT Tender chocks and tie downs
- Large sun cushions forward of Helm
- Hinged door and stainless steel safety rails to Aft Deck steps
- Marine Air 24,000 BTU Air Conditioning System with SMX controls
- Custom cabinet with (2) Gaggenau 240V grills under a hinged fiberglass cover with (2) large storage cabinets below

---

## **Flybridge / Navigation Electronics**

---

- GPS Link Remote Vessel Monitoring System
- Hydraulic power assist steering
- (2) 15" Furuno Nav Net displays for radar, plotter and sounder
- Garmin GPS map 7616 16" chart plotter on Flybridge interfaced with wheelhouse
- (2) Separate Navnet control pads
- Simrad AP-25 Autopilot control head
- Simrad IS-15 Digital depth
- (2) CAT LCD Digital ECM displays
- Icom IC-M604 VHF with remote mic
- ACR URP-102 Point Pad searchlight controls
- American Bow Thruster integrated bow and stern thrust controls
- (5) Bilge pump indicator lights
- Trim tab controls
- Start/stop Controls
- Windlass controls
- Hatteras Digital Systems Monitor
- CAT Electronic clutch and throttle controls
- 5" Ritchie Power Damp compass
- Wesmar Fin Stabilizer controls
- (2) VHF Antennas
- Helm cover

---

## Aft Crew Area

---

- Accessed from a hatch in the Aft Deck or the large transom door is the Lazarette and Crew Area.
- A single berth on the portside has an upholstered mattress keeper and matching berth cover with pillow sham.
- At the foot of the berth is a Sharp Aquos 20" LCD TV. There is a reading light, as well as two stainless steel trimmed DC lights overhead.
- There is a fold-down stainless steel wash basin, a handheld or wall mountable shower fixture. A 2-step ladder gives access from the transom hinged door. Overhead are two stainless steel trimmed lights. An opaque shower door separates this area from the Crew Cabin/Lazarette area
- 5-Step stainless steel ladder to Aft Deck • (3) Storage drawers for parts
- Domestic Water manifold
- (2) 220V Headhunter Mach 5 pumps, one as primary, one as back-up. Turn a valve and flip a switch to select
- Charcoal water filter
- Headhunter Puffer water accumulator tank
- AC System for Crew Cabin
- Breaker panel to select bow or stern power supply
- Dri-deck decking
- AC and DC Overhead lights
- CO Monitor
- 

---

## Electrical

---

- Twin Onan 21.5 kW electronic Quiet Diesel generators with shock mounts, sound enclosure, hour meter and water lift muffler (1165 hours)
- 110V/220 Volt AC Electrical Systems
- 12V/24 Volt DC Electrical Systems
- (2) 24 Volt Banks of HD 12 volt marine batteries (4) mounted in fiberglass boxes Mastervolt 240 Volt gel/lead acid compatible battery charger, 50 amp
- Automatic Battery Parallel System with switch at helms
- (2) Jefferson Electric 15 KVA isolation transformers with boost selector at main switch panel
- (2) 50 Amp Glendinning shore cord reels
- Battery control panel with fuses and isolation switches



- DC Electronics panel with magnetic circuit breaker
- AC Distribution panel with magnetic circuit breakers
- Newmar 32/12/50 converter for electronics
- (4) Guest battery switches
- (3) Mastervolt battery isolators
- AC Switching panel with: source selector switches, digital volt meter, digital amp meter and frequency meter
- Generator start/stop controls
- Voltage boost tap switch
- Interlock selector breakers for shores or ship shore power

*Hatteras Systems Monitor with programmable logic controller read out with visual and audible signals for: High exhaust temperature, alternator malfunction, voltage, high bilge water, fire warning in engine room and fire extinguisher discharge*

- AC Power loss
- Smoke Detector activation
- Carbon Monoxide detector activation
- Holding tank 3/4 full alarm
- GFCI Protected outlets throughout
- 20 Gallon Hot water heater
- Bow and stern shore power supply breakers in Crew Area

## Engine Room

---

- (5) AC Fluorescent light fixtures
- (4) DC Incandescent light fixtures
- DC ventilation blowers
- FM 200 Fixed Fire Extinguishing System with automatic and remote controls plus audible and visual discharge signal
- Fiberglass Air Intake System for Engine Room and engine combustion air with baffeling and filters to minimize water intrusion
- Electric Fuel Transfer System with filtration and day tank protection for pump

- Freshwater spigot with hose
- AC Compressed Air System with air line; regulator and hose Dockside water inlet with pressure regulator
- (5) 2000 GPH 24V DC Bilge pumps
- (3) 3700 GPH 24V DC Sump pumps (sealed from bilge) bonded bronze ball valves throughout
- 24 Volt Sewage pump plumbed for dockside pump out with alarm plus overboard discharge
- Rubber deck mat between engines
- Discharge sea chests
- Pick-up sea chests
- Engine start/stop switches in Engine Room
- 1" Stainless steel steering tie bar with self-aligning, pivoting ball joints
- Neutral interlock switches allowing engines to start in neutral only
- Steel laminated into fiberglass stringers at key locations to bolt engine mounts
- Engine Room bulkheads and overheads built from resin infused composite with PVC foam core between laminated fiberglass
- 16 HP hydraulic American Bow Thruster with dual 5- blade props operates hydraulically from either transmission mounted pump, allowing for full back-up of one engine fails
- 16 HP Hydraulic American Bow Thruster with dual 5-blade prop stern thruster
- Water manifold with centralized shut off valve for sinks and showers
- Protruded fiberglass rudder shelf with stainless steel tie bar
- 220 Volt 30 gallon hot water heater
- 86,000 BTU Direct Expansion, reverse cycle AC compressors with SMX controls for yacht and interior
- 24,000 BTU Direct Expansion, reverse cycle AC Compressors with SMX control for Flybridge
- Aquamet 22 3.5" Stainless steel shafts
- Elbex Engine Room camera
- Dripless Shaft seals
- Stainless Steel Rudders with mounted spares
- Dripless Rudder seals
- 7-Blade Nibral high-performance Propellers s/s Electro with Hydraulic trim tab
- Internal Strainers for Engines, Generators, Air Conditioners, etc.
- Oberdorfer Oil Changing System with quick-disconnect hose
- (2) Generator Exhaust/water separators
- Dual Racor Fuel filters with vacuum gauges for each engine
- (4) Coolant recovery bottles
- (2) Racor 500 Fuel filters for generators
- (2) Reverso Fuel priming pumps
- Insulated door between Engine Room and Lazarette
- (2) Oberdorfer Fuel Transfer Pumps, one as emergency back-up
- 110 Volt House Air Compressor
- 1200 GPD FCI Watermaker with digital control panel
- Emergency Electric 110 volt Bilge Pump

- Mounted 40V Fan
- Cupranickel AC Manifold replaced with all Nylon fittings for longevity
- (6) Underwater lights
- Wesmar Model RS600 Hydraulic Stabilizers including 4801 High Speed Triple Axis Gyro
- Main Engines Cooling System chemically finished
- Centerline overhead grab rail
- Porter cable household Air Compressor
- Hydraulic System Cooling Pump
- Wesmar dedicated Hydraulic tank for Stabilizer System

---

## Exclusions

- Owners personal items
- Transom name will be removed and holes repaired at sellers expense

---

## Disclaimer

The Company offers the details of this vessel in good faith but cannot guarantee or warrant the accuracy of this information nor warrant the condition of the vessel. A buyer should instruct his agents, or his surveyors, to investigate such details as the buyer desires validated. This vessel is offered subject to prior sale, price change, or withdrawal without notice.

---

## Exclusions

Owner's personal belongings.

---

## Disclaimer

The Company offers the details of this vessel or yacht in good faith but cannot guarantee or warrant the accuracy of this information nor warrant the condition of the vessel. A buyer should instruct his representatives, agents, or his surveyors, to investigate such details as the buyer desires validated. This vessel or yacht is offered subject to prior sale, price change, or withdrawal without notice.

# PHOTOS

IMG\_9681



IMG\_9682



IMG\_9683



IMG\_9684



IMG\_9688



IMG\_9679



IMG\_9677



IMG\_9670



IMG\_9675



IMG\_9676



IMG\_9640



IMG\_9641





IMG\_9642



IMG\_9643



IMG\_9664



IMG\_9665



IMG\_9666



IMG\_9668



IMG\_9647



IMG\_9648



IMG\_9650



IMG\_9652



IMG\_9653



IMG\_9654





IMG\_9655



IMG\_9656



IMG\_9657



IMG\_9660



IMG\_9592



IMG\_9593





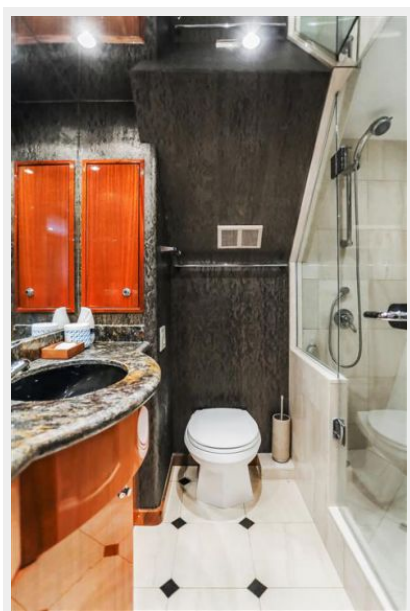
IMG\_9596



IMG\_9599



IMG\_9600



IMG\_9604



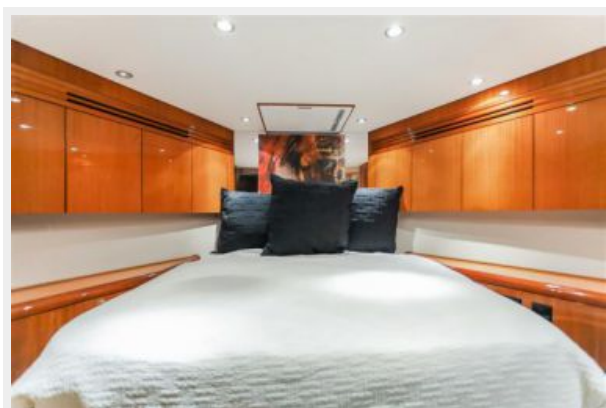
IMG\_9605



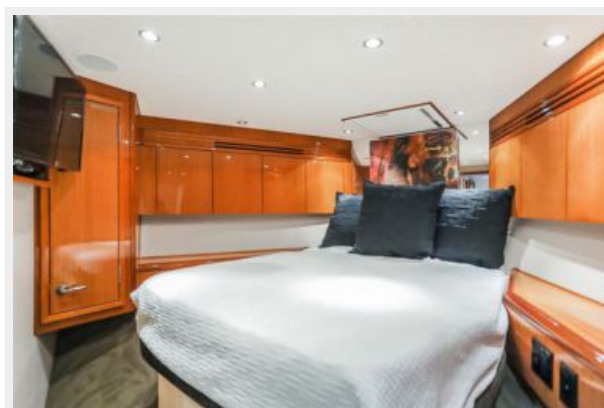
IMG\_9606



IMG\_9612



IMG\_9614



IMG\_9616



IMG\_9618



IMG\_9620



IMG\_9695



IMG\_9621



IMG\_9622





IMG\_9624



IMG\_9631



IMG\_9634



IMG\_9635



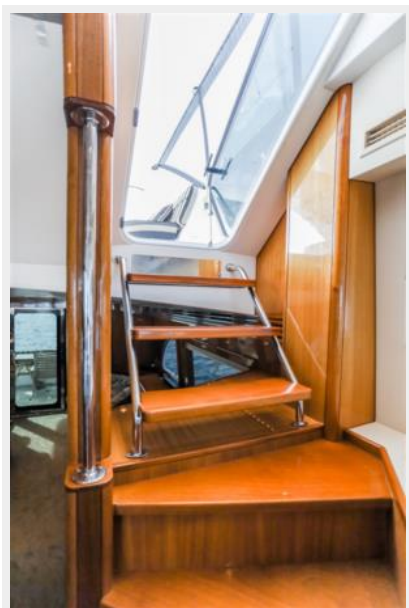
IMG\_9636



IMG\_9639



IMG\_9661



IMG\_9691



IMG\_9694



# CONTACTS

---

Andrey Shestakov, leading yacht broker of the sales department of Shestakov Yacht Sales Inc. Shestakov Yacht Sales Inc., the official representative of the Miami/Fort Lauderdale FL headquarters.

## Contact details

---

Email:  
**andrey@shestakovyachtsales.com**

Web: [shestakovyachtsales.com/en/](http://shestakovyachtsales.com/en/)

## Telephones

---

USA: **+1(954)274-4435**

## Office hours

---

Monday – Saturday: **9:00 - 21:00 EDT**

Sunday: **closed**

## Address

---



Harbour Towne Marina, 850 NE 3rd St,  
STE 213, Dania, FL 33004