

## NATIVA — ARZANA' NAVI



**Builder:** ARZANA' NAVI

**Year Built:** 2012

**Model:** Sloop

**Price:** PRICE ON APPLICATION

**Location:** Italy

**LOA:** 157' 6" (48.00m)

**Beam:** 32' 2" (9.80m)

**Min Draft:** 16' 5" (5.00m)

**Max Draft:** 25' 8" (7.80m)

**Cruise Speed:** 10 Kts. (12 MPH)

**Max Speed:** 13 Kts. (15 MPH)

Our experienced yacht broker, Andrey Shestakov, will help you choose and buy a yacht that best suits your needs **NATIVA — ARZANA' NAVI** from our catalogue. Presently, at Shestakov Yacht Sales Inc., we have a wide variety of yachts available on our sale's list. We also work in close contact with all the big yacht manufacturers from all over the world.

If you would like to buy a yacht **NATIVA — ARZANA' NAVI** or would like help answering any questions concerning purchasing, selling or chartering a yacht, please call **+1(954)274-4435**

# TABLE OF CONTENTS

TABLE OF CONTENTS	2
SPECIFICATIONS	4
Overview	4
Basic Information	4
Dimensions	4
Speed, Capacities and Weight	4
Accommodations	4
Hull and Deck Information	5
Engine Information	5
DETAILED INFORMATION	6
Overview	6
Exclusions	7
Disclaimer	7
PHOTOS	8
Exterior - 1	8
Exterior - 2	8
Exterior - 3	8
Exterior - 4	8
Exterior - 6	8
Exterior - 5	8
Exterior - 7	9
Exterior - 8	9
Exterior - 9	9
Exterior - Fly Bridge	9
Owners Cabin	9
Owners Office	9
Main Deck - Dining	10
Main Deck - Staircase / Lounge	10

Gym - 1	10
Gym - 2	10
CONTACTS	11
Contact details	11
Telephones	11
Office hours	11
Address	11

# SPECIFICATIONS

## Overview

At 48m (1576) NATIVA is a sailing sloop with superb hull lines, performance focused construction and is the most competitively priced vessel in this category. Designed by the renowned Tripp Design, this powerful sloop rig provides exhilarating performance even in light winds.

## Basic Information

Category: Sloop	Model Year: 2012
Year Built: 2012	Country: Italy
Fly Bridge: Yes	

## Dimensions

LOA: 157' 6" (48.00m)	LWL: 137' 2" (41.80m)
Beam: 32' 2" (9.80m)	Min Draft: 16' 5" (5.00m)
Max Draft: 25' 8" (7.80m)	

## Speed, Capacities and Weight

Cruise Speed: 10 Kts. (12 MPH)	Cruise Speed Range: 2400
Max Speed: 13 Kts. (15 MPH)	Gross Tonnage: 303 Pounds
Water Capacity: 4358.838858 Gallons	Fuel Capacity: 4411.6732684 Gallons

## Accommodations

Total Cabins: 5	Sleeps: 10
Crew Sleeps: 8	

---

## Hull and Deck Information

---

**Hull Material:** Aluminum

**Deck Material:** Teak

**Exterior Designer:** Tripp Design

**Interior Designer:** Nunzio Da Vià

---

## Engine Information

---

**Engines:** 1

**Manufacturer:** MAN

**Model:** R6

**Engine Type:** Inboard

**Fuel Type:** Diesel

---

# DETAILED INFORMATION

---

## Overview

---

Defined by a piercing bow, metallic blue hull and ivory sails, NATIVA represents an exciting sales opportunity presented by an all-aluminium 48m (157'6") fly bridge sailing sloop and exterior design hailing from the drawing boards of renowned naval architects Tripp Design.

NATIVA pairs the exhilaration of sailing with the comfort of a spacious and chic interior. Efficient, silent, bluewater cruising is guaranteed alongside easy manoeuvrability and light handling. RINA classified and delivered in 2012 by Italian shipyard Arzanà Navi, NATIVA is well-suited to an owner interested in fabulous living space with a stylish finish aboard a 2014 World Superyacht Awards finalist and Showboats 2014 Exterior and Interior design finalist.

Offering all the comforts of a luxurious motor yacht with all the joy of feeling the wind in your hair, NATIVA's powerful sail plan performs above and beyond, even in light winds. A top cruising speed of 15 knots is matched with a 2,400 nautical mile range. Large exterior deck space on the main deck is complemented by a double helm on the flybridge. And an eye-catching metallic blue hull is paired with a complementary glazed superstructure.

A large aft deck area comprises an impressive spa tub and space for a large dining table seating 10 guests for al fresco dining. Further seating, sprawling sun pads and panoramic views can be found on the spacious flybridge. Additional amenities include a full-beam master suite with his-and-hers bathrooms located on the lower deck aft, two VIP suites and two twin cabins, all with en suite showers, are also found on the lower deck. Fitness enthusiasts will appreciate the versatility of the interior layout, which allows for one of the twin cabins to double as a fully-equipped gym with two Pullman berths.

NATIVA has never been offered to charter remaining private since her delivery. She is presented in impeccable condition and currently undergoing general maintenance ahead of the spring/summer season. NATIVA is the most competitively priced vessel in this category and should not be over looked.

Accommodating 10 guests and a crew of 8, NATIVA is presented in impeccable condition and

---

is VAT Paid.

## Exclusions

---

Owner's personal belongings.

## Disclaimer

---

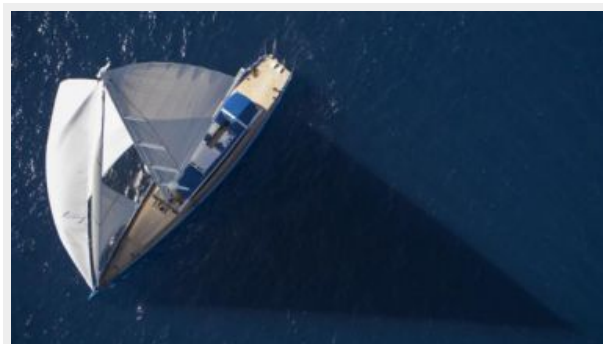
The Company offers the details of this vessel or yacht in good faith but cannot guarantee or warrant the accuracy of this information nor warrant the condition of the vessel. A buyer should instruct his representatives, agents, or his surveyors, to investigate such details as the buyer desires validated. This vessel or yacht is offered subject to prior sale, price change, or withdrawal without notice.

# PHOTOS

Exterior - 1



Exterior - 2



Exterior - 3



Exterior - 4



Exterior - 5



Exterior - 6





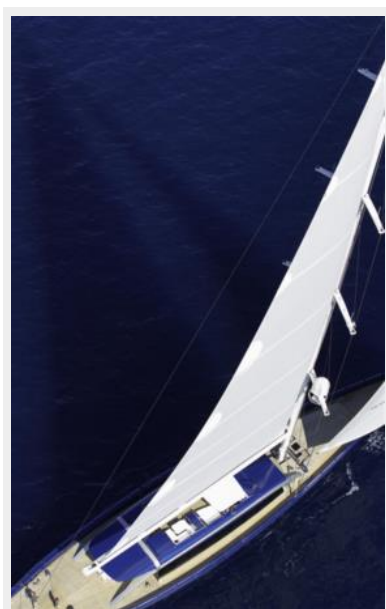
**Exterior - 7**



**Exterior - 8**



**Exterior - 9**



**Exterior - Fly Bridge**



**Owners Cabin**



**Owners Office**



**Main Deck - Dining**



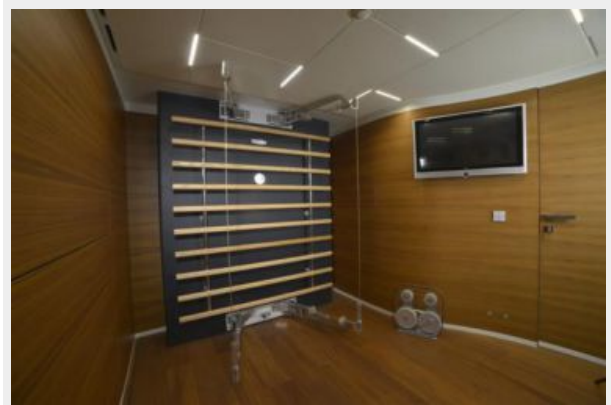
**Main Deck - Staircase / Lounge**



**Gym - 1**



**Gym - 2**



# CONTACTS

---

Andrey Shestakov, leading yacht broker of the sales department of Shestakov Yacht Sales Inc. Shestakov Yacht Sales Inc., the official representative of the Miami/Fort Lauderdale FL headquarters.

## Contact details

---

Email: **andrey@shestakovyachtsales.com**

Web: [shestakovyachtsales.com/en/](https://shestakovyachtsales.com/en/)

## Telephones

---

USA: **+1(954)274-4435**

## Office hours

---

Monday – Saturday: **9:00 - 21:00 EDT**

Sunday: **closed**

## Address

---



Harbour Towne Marina, 850 NE 3rd St,  
STE 213, Dania, FL 33004