

SOLID WASTE — PRESTIGE



Builder: PRESTIGE

Year Built: 2016

Model: Motor Yacht

Price: PRICE ON APPLICATION

Location: United States

LOA: 55' 0" (16.76m)

Beam: 15' 8" (4.78m)

Max Draft: 3' 10" (1.17m)

Our experienced yacht broker, Andrey Shestakov, will help you choose and buy a yacht that best suits your needs **Solid Waste — PRESTIGE** from our catalogue. Presently, at Shestakov Yacht Sales Inc., we have a wide variety of yachts available on our sale's list. We also work in close contact with all the big yacht manufacturers from all over the world.

If you would like to buy a yacht **Solid Waste — PRESTIGE** or would like help answering any questions concerning purchasing, selling or chartering a yacht, please call **+1(954)274-4435**

TABLE OF CONTENTS

TABLE OF CONTENTS	2
SPECIFICATIONS	3
Overview	3
Basic Information	3
Dimensions	3
Speed, Capacities and Weight	3
Accommodations	3
Hull and Deck Information	4
Engine Information	4
DETAILED INFORMATION	5
Exterior Key Features	5
Interior Key Features	5
Helm Key Features	5
Manufacturer Provided Description	6
Exclusions	6
Disclaimer	6
PHOTOS	7
Layout Photo 1	20
Layout Photo 2	20
Layout Photo 3	20
Layout Photo 4	20
CONTACTS	21
Contact details	21
Telephones	21
Office hours	21
Address	21

SPECIFICATIONS

Overview

"Solid Waste" is a low hour gently used Prestige that is in immaculate condition and the only 550 S with a Seakeeper on the market. This 550 S was freshwater kept until the summer of 2019 making it a must-see if you're in the market. The layout offers a spacious salon, aft galley, three staterooms with a massive full-beam master, two heads, and crew quarters. This vessel is ready for your next adventure and will not disappoint! Key Features Seakeeper Exceptional Condition Tender Included V-Kool Tint Bow Thruster Hydraulic Platform Exterior Cushions Recovered Cockpit Sun Shade

Basic Information

Category: Motor Yacht

Model Year: 2016

Year Built: 2016

Country: United States

Fly Bridge: Yes

Cockpit: Yes

Dimensions

LOA: 55' 0" (16.76m)

Beam: 15' 8" (4.78m)

Max Draft: 3' 10" (1.17m)

Speed, Capacities and Weight

Displacement: 38470 Pounds

Water Capacity: 211 Gallons

Holding Tank: 31 Gallons

Fuel Capacity: 581 Gallons

Accommodations

Total Cabins: 3

Total Heads: 2

Hull and Deck Information

Hull Material: Fiberglass

Engine Information

Engines: 2

Manufacturer: Cummins

Model: QSC 8.3 Zeus

Engine Type: Inboard

Fuel Type: Diesel

DETAILED INFORMATION

Exterior Key Features

- 2016 Zodiac Yachtline 380DL 50HP Yamaha (146hrs)
- All exterior cushions recently recovered
- Cockpit docking station with thruster control located starboard
- Electric cockpit sunshade
- Exterior covers for all cushions and black mesh covers for salon windows
- Hydraulic platform
- Flybridge offers a large comfortable sundeck with a bimini top
- Large bow pad offers forward seating and bimini top
- Glendenning electric shore power cord reel
- Custom BBQ grill stand
- Blue accent/courtesy lighting
- Teak cockpit table

Interior Key Features

- Large windows allow great visibility almost 360 degrees
- V-Kool tint added (\$6k)
- 84,000 BTU air conditioning
- Electric sunroof
- Private access to the master full-beam master lager hull side windows
- Unique master head shower closet walkthrough layout
- Fully equipped galley aft
- Ice maker located across from galley with storage
- Electric actuated tv port side dash
- Electric windows port and starboard
- Washer dryer under steps leading to forward staterooms
- Port forward stateroom two twin beds with storage underneath
- Forward stateroom features an on-suite head with hull side windows

Helm Key Features

- Twin Raymarine Hybrid touch chartplotters
- Raymarine depth sounder display
- Quick anchor counter display
- Bow thruster control
- Vessel view display
- Wireless spotlight control

- Zeus joystick docking with Skyhook and autopilot
- Seakeeper controller
- Additional AC vent added under the helm seat

Manufacturer Provided Description

The **PRESTIGE 550 S** expands on the concept of the coupé motor yacht that made the PRESTIGE 500 a success.

With an exceptional interior layout offering a large living space on a single level, a vast sliding glass door opening onto the cockpit, and a large opening glass sunroof, she is extremely bright and affords an excellent view of the sea. The **PRESTIGE 550 S** integrates the concept of the private owner's cabin, which is unique in its category.

Its flybridge offers a large and comfortable sundeck.

Equipped with Zeus pods, this exceptional yacht marries power and ease of handling. Down to the smallest details, everything has been designed to combine excellent performance and reactive handling, without compromise.

Exclusions

Owner's personal belongings.

Disclaimer

The Company offers the details of this vessel or yacht in good faith but cannot guarantee or warrant the accuracy of this information nor warrant the condition of the vessel. A buyer should instruct his representatives, agents, or his surveyors, to investigate such details as the buyer desires validated. This vessel or yacht is offered subject to prior sale, price change, or withdrawal without notice.

PHOTOS







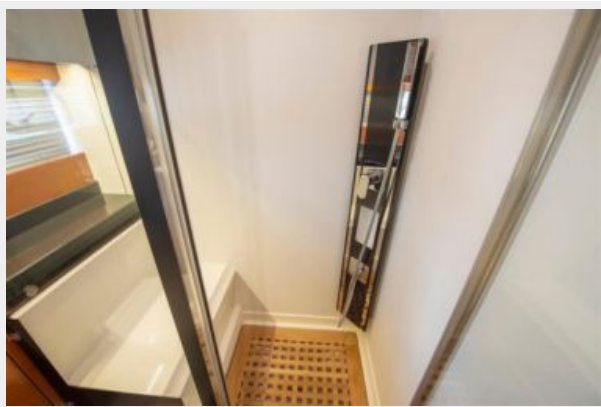




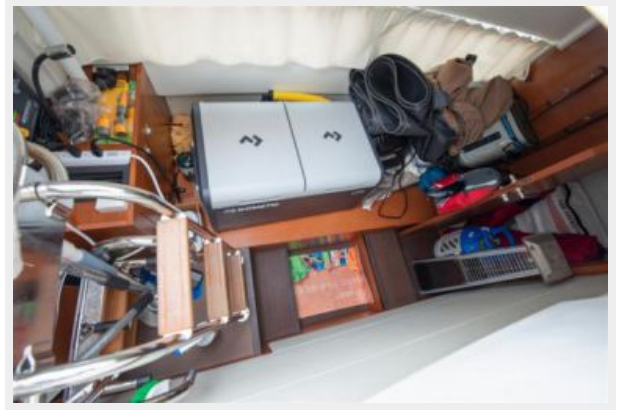


















Layout Photo 1



Layout Photo 2



Layout Photo 3



Layout Photo 4



CONTACTS

Andrey Shestakov, leading yacht broker of the sales department of Shestakov Yacht Sales Inc. Shestakov Yacht Sales Inc., the official representative of the Miami/Fort Lauderdale FL headquarters.

Contact details

Email: andrey@shestakovyachtsales.com

Web: shestakovyachtsales.com/en/

Telephones

USA: +1(954)274-4435

Office hours

Monday – Saturday: **9:00 - 21:00** EDT

Sunday: **closed**

Address



Harbour Towne Marina, 850 NE 3rd St,
STE 213, Dania, FL 33004