

2006 FERRETTI YACHTS 550 — FERRETTI YACHTS



Builder: [FERRETTI YACHTS](#)

Year Built: 2006

Model: Motor Yacht

Price: PRICE ON APPLICATION

Location: United States

LOA: 57' 0" (17.37m)

Beam: 16' 2" (4.93m)

Max Draft: 4' 11" (1.50m)

Our experienced yacht broker, Andrey Shestakov, will help you choose and buy a yacht that best suits your needs 2006 Ferretti Yachts 550 — FERRETTI YACHTS from our catalogue. Presently, at Shestakov Yacht Sales Inc., we have a wide variety of yachts available on our sale's list. We also work in close contact with all the big yacht manufacturers from all over the world.

If you would like to buy a yacht 2006 Ferretti Yachts 550 — FERRETTI YACHTS or would like help answering any questions concerning purchasing, selling or chartering a yacht, please call **+1(954)274-4435**

TABLE OF CONTENTS

TABLE OF CONTENTS	2
SPECIFICATIONS	6
Basic Information	6
Dimensions	6
Speed, Capacities and Weight	6
Accommodations	6
Hull and Deck Information	6
Engine Information	7
DETAILED INFORMATION	8
Description	8
Overview	8
Exclusions	12
Disclaimer	12
PHOTOS	13
1	13
2	13
4	13
3	13
5	13
6	13
7	14
8	14
9	14
10	14
11	14
12	14
13	15
14	15

15	15
16	15
17	15
18	15
19	16
20	16
21	16
22	16
23	16
24	16
25	17
26	17
27	17
28	17
29	17
30	17
31	18
32	18
33	18
34	18
35	18
36	18
37	19
38	19
39	19
40	19
41	19
42	19
44	20

43	20
45	20
46	20
47	21
48	21
49	21
50	21
51	21
52	21
54	22
53	22
55	22
56	22
57	23
58	23
59	23
60	23
61	23
62	23
63	24
64	24
65	24
66	24
67	24
68	24
69	25
70	25
CONTACTS	26
Contact details	26

Telephones	26
Office hours	26
Address	26

SPECIFICATIONS

Basic Information

Category: Motor Yacht

Model Year: 2006

Year Built: 2006

Country: United States

Dimensions

LOA: 57' 0" (17.37m)

Beam: 16' 2" (4.93m)

Max Draft: 4' 11" (1.50m)

Speed, Capacities and Weight

Displacement: 63493 Pounds

Water Capacity: 165 Gallons

Fuel Capacity: 819 Gallons

Accommodations

Total Cabins: 3

Total Berths: 5

Total Heads: 3

Hull and Deck Information

Hull Material: Fiberglass

Engine Information

Engines: 2

Manufacturer: MAN

Model: 900 CR

Engine Type: Inboard

Fuel Type: Diesel

DETAILED INFORMATION

Description

'M/Y Stephanie' was built and designed by a world renowned diversified shipyard the Ferretti Group in Italy. Her true Italian flair shows the unique style and beauty that will set you apart from the pack. A timeless beauty in her own class. Vessel is in a Single Asset LLC. A must see!

Overview

Hull - Deck

- Access to swim platform through a folding door
- Aft swim platform/spoiler with incorporated diving steps, locker with electric opening and storage for standup jetski.
- Anchor Bruce 20kg (44lbs) with chain 75 mtr (246')
- Boat Hook
- Bow rail and central cable
- Cable at pulpit in stainless steel
- Canopies for protection side and front windows
- Cleats mid ship (1 each side)
- Cockpit lights
- Cockpit sink with fresh and salt water
- Electric winch 1400w with controls in foredeck, lower bridge and flying bridge
- External acoustic alarm for bilge water level (at bow and stern)
- Fenders (6)
- Fire Extinguishers
- Hook-up cable (220v) for dock
- Horn with compressor
- Inox and plexiglass cockpit table
- Lump Teak cockpit
- Mooring Lines (4) of 12m (40')
- Mooring Lockers including cleats and storages
- Navigation lights
- No-slip deck surface
- Remote shut off of engine fuel hoses and generator
- Salt-water outlet at transom in the forepeak and in the galley
- Shower with hot/cold water at transom
- Stainless steel deck ironware

- Stainless steel rear door
- Stern bench with lockers (not with crew cabin optional)
- Storages in the pilasters with vertical door (2)
- Sunbathing cushions on foredeck
- Wheelhouse windows with side opening

Salon

- Aft sliding door and tilt window, both with stainless steel frames
- Carpeted floor
- Hi-Fi CD/DVD BOSE surround system
- 20in. color LCD TV/side curtains
- 2 seat sofa on the left
- Upholstered ceilings
- U-shaped sofa on the right with extendible table and storage
- U-shaped upper dinette on the right with table
- Venetian blinds at the aft window

Main Helm

- MapTech i3 GPS/Nav/Radar
- Simrad Autopilot
- Icom VHF radio (main, fly)
- Barometer, clock and hydrothermometer
- Side power Bow thruster
- Yacht Controller
- Carpeted floor
- Cigarette light outlet 12v
- Control station with full instrumentation
- Fire Extinguisher
- Gas and reversing gear electronic controls
- Helmsman seat
- Instant parallel battery
- Magnetic compass
- Main electrical panel
- MAN display for boat data management
- Stairs to the Fly
- Windshield Wipers with washers (2) and timer

Galley

- Complete set for 6 people: Ferretti ceramic crockery and plates, glasses, stainless steel cutlery, and espresso cups and saucers
- Electric cooking top with 4 burners.
- Electric microwave oven

- Extractor fan over cooking top
- Fire extinguisher
- Fridge 181 lt + freezer 39 lt 220v (24 v through inverter)
- Granite surface counter with twin sink
- Ice Maker
- Lockers (2)
- Overhead cabinets
- Stainless steel porthole

Master Stateroom

- Bedside tables and reading lights
- Carpeted floor
- JVC stereo CD/DVD with 2 loudspeakers
- Curtains/Drawers
- Mirror headboard over bed
- Mirror on wardrobe
- Overhead hatch with cover
- Queen bed with mattress, pillows and bedspread
- Side lockers
- Stainless steel portholes (2) with covers
- TV socket & TV
- Upholstered ceiling
- Ventilation under bed
- Wardrobes (2) and safe box

Engine room

- Anti Rolling Gyro (ARG)
- Automatic/manual fire extinguisher
- Bilge pump
- Deviating valve to allow engines to pump water from the bilge
- Electric blower
- Fresh water outlet for filling and washing
- Fuel engine filters
- Fuel tank with enclosed settler and discharge
- Mase generator I.S. 19 (3700 Hours approx.)
- Inspection light/portable lamp
- Raw water engine filters
- Transparent gauge indicator in one fuel tank
- Water heater 220v
- Watertight bulkhead, fwd

Guest Staterooms w/ensuite head/shower

- Beds (2) with mattresses, pillows and bedspreads
- Bedside tables with reading lights
- Carpeted floor/curtains
- Fixed porthole with cover
- Mirrors
- TV socket & TV
- JVC stereo CD/DVD with 2 loudspeakers
- Stainless steel portholes (2) with covers
- Ventilation under bed
- Wardrobe with mirror

GUEST BATHROOMS (2)

- Electric ceramic WC with fresh water
- Marble washbasin top/mirror
- Overhead lockers and shelves
- Separate shower with plexiglass
- Stainless steel porthole
- Washbasin

Utility room

- Entrance from the galley
- Side by side Miele Washer and Dryer
- Stainless steel porthole with cover
- Washbasin

Aft storage/lazarette

- Stainless steel portholes (2) with cover
- Storage Area

Additional Information

- Bilge pump system with 4 electric pumps (3 automatic)
- Cathodic protection with zinc anodes
- Electric system consisting of
- 200 Ah 12v generator battery
- 50A 24v automatic battery charger
- Generator
- 400Ah 24v engine starting batteries
- 400 Ah 24 v bank of batteries for service
- 24v lighting throughout
- Inverter 24vdc/220vac 1500w for fridge
- Mechanical and electric battery parallel switch
- Electric outlets for 220v throughout

- Fire extinguishers
- Fridge capacity: 181 lt +39 lt freezer
- Galley-220v/24v through inverter
- 50 lt Fly Bridge-24v
- Hot water supply with 220v water heater
- Hydraulic steering electrically powered
- Remote controlled device for closing the engine and generator supply valves
- Saltwater pressure system for foredeck and transom
- Shore plug 220V/32 A
- Shower sump pump with automatic electric pump
- Spoiler sump pump with 1 automatic electric pump
- Stuffing box with driplless shaft seal
- Trim Tabs
- Underwater exhausts

Exclusions

Owner's personal belongings.

Disclaimer

The Company offers the details of this vessel or yacht in good faith but cannot guarantee or warrant the accuracy of this information nor warrant the condition of the vessel. A buyer should instruct his representatives, agents, or his surveyors, to investigate such details as the buyer desires validated. This vessel or yacht is offered subject to prior sale, price change, or withdrawal without notice.

PHOTOS

1



2



3



4



5



6



7



8



9



10



11



12



13



14



15



16



17



18



19



20



21



22



23



24



25



26



27



28



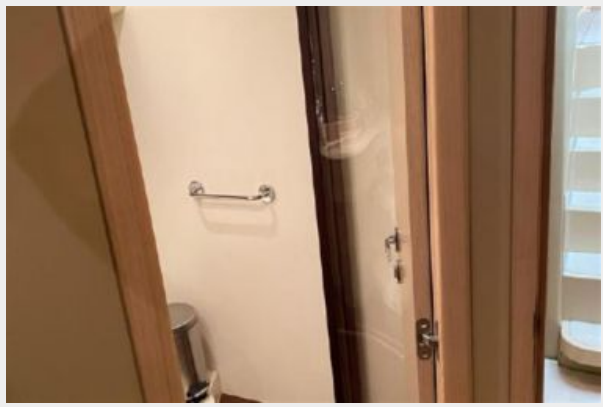
29



30



31



32



33



34



35



36



37



38



39



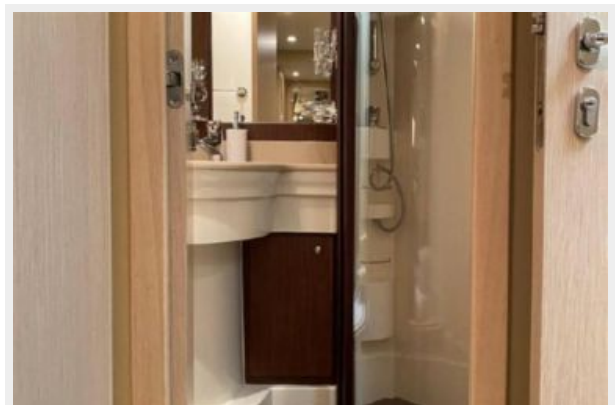
40



41



42



43



44



45



46



47



48



49



50



51



52



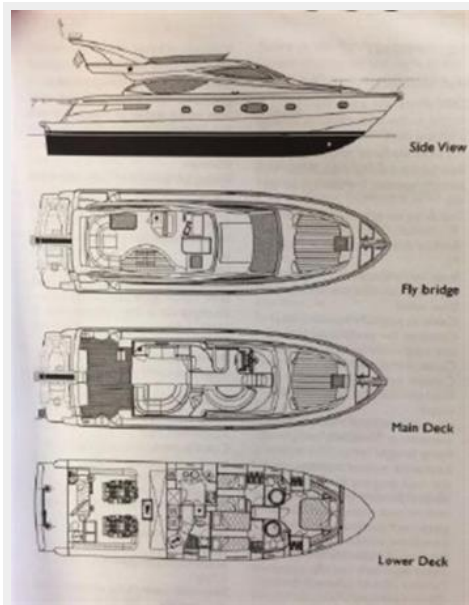
53



54



55



56



57



58



59



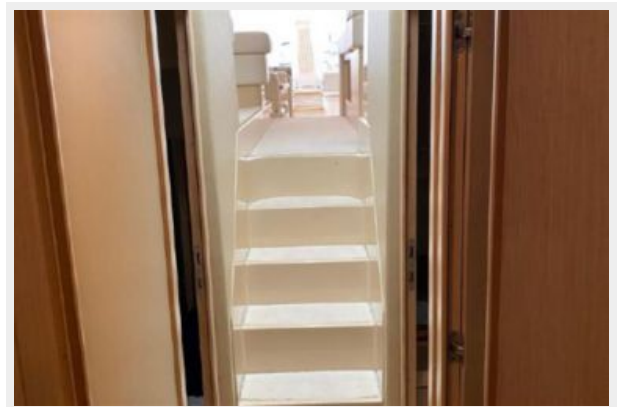
60



61



62



63



64



65



66



67



68



69



70



CONTACTS

Andrey Shestakov, leading yacht broker of the sales department of Shestakov Yacht Sales Inc. Shestakov Yacht Sales Inc., the official representative of the Miami/Fort Lauderdale FL headquarters.

Contact details

Email: andrey@shestakovyachtsales.com

Web: shestakovyachtsales.com/en/

Telephones

USA: +1(954)274-4435

Office hours

Monday – Saturday: **9:00 - 21:00** EDT

Sunday: **closed**

Address



Harbour Towne Marina, 850 NE 3rd St,
STE 213, Dania, FL 33004