

## LIONESS — DEFEVER



**Builder:** DEFEVER

**Year Built:** 1991

**Model:** Trawler Yacht

**Price:** PRICE ON APPLICATION

**Location:** United States

**LOA:** 49' 0" (14.94m)

**Beam:** 15' 0" (4.57m)

**Min Draft:** 4' 9" (1.45m)

**Max Draft:** 4' 9" (1.45m)

**Cruise Speed:** 8 Kts. (9 MPH)

**Max Speed:** 9 Kts. (10 MPH)

Our experienced yacht broker, Andrey Shestakov, will help you choose and buy a yacht that best suits your needs **Lioness — DEFEVER** from our catalogue. Presently, at Shestakov Yacht Sales Inc., we have a wide variety of yachts available on our sale's list. We also work in close contact with all the big yacht manufacturers from all over the world.

If you would like to buy a yacht **Lioness — DEFEVER** or would like help answering any questions concerning purchasing, selling or chartering a yacht, please call **+1(954)274-4435**

# TABLE OF CONTENTS

TABLE OF CONTENTS	2
SPECIFICATIONS	6
Overview	6
Basic Information	6
Dimensions	6
Speed, Capacities and Weight	6
Accommodations	6
Hull and Deck Information	6
Engine Information	7
DETAILED INFORMATION	8
MAIN DESCRIPTION	8
49' DeFever Overview	8
49' DeFever Vessel Walkthrough	8
49' DeFever Accommodations	8
49' DeFever Salon	8
49' DeFever Galley	8
49' DeFever Dining	9
49' DeFever Master Stateroom	9
49' DEFEVER GUEST STATEROOM	9
49' DeFever Laundry	9
49' DeFever Pilothouse	9
49' DeFever Flybridge	9
49' DeFever Aftdeck	10
49' DeFever Audio/Visual Equipment	10
49' DeFever Electronics	10
49' DeFever Electrical System	10
49' DeFever Engine/Mechanical Equipment	11
49' DeFever Deck Equipment	12

49' DEFEVER TENDER	12
49' DeFever Safety and Fire Protection	12
49' DeFever Exclusions	13
DISCLAIMER	13
Exclusions	13
Disclaimer	13
PHOTOS	14
1_2777975_49_defever_starboard_aft_profile	14
0_2777975_49_defever_starboard_profile	14
2_2777975_49_defever_port_profile	14
3_2777975_49_defever_port_forward_profile	14
4_2777975_49_defever_port_aft_profile	14
5_2777975_49_defever_anchor_windlass	14
6_2777975_49_defever_foredeck1	15
7_2777975_49_defever_foredeck2	15
8_2777975_49_defever_foredeck_aft	15
9_2777975_49_defever_portuguese_bridge1	15
11_2777975_49_defever_port_side_deck1	15
10_2777975_49_defever_portuguese_bridge2	15
12_2777975_49_defever_port_side_deck2	16
13_2777975_49_defever_starboard_side_deck	16
14_2777975_49_defever_flybridge_forward1	16
15_2777975_49_defever_flybridge_forward2	16
16_2777975_49_defever_flybridge_aft	16
17_2777975_49_defever_flybridge_helm	16
18_2777975_49_defever_flybridge_seating	17
19_2777975_49_defever_flybridge_radar_arch_hinge	17
20_2777975_49_defever_tender	17
21_2777975_49_defever_tender_davit	17

22_2777975_49_defever_outboard_davit	17
23_2777975_49_defever_aftdeck1	17
24_2777975_49_defever_aftdeck2	18
25_2777975_49_defever_aftdeck_port	18
26_2777975_49_defever_aftdeck_starboard	18
27_2777975_49_defever_aftdeck_control_station	18
28_2777975_49_defever_swimplatform	18
29_2777975_49_defever_salon_forward	18
30_2777975_49_defever_salon_aft	19
31_2777975_49_defever_salon_port	19
32_2777975_49_defever_salon_starboard	19
33_2777975_49_defever_salon_starboard_forward	19
34_2777975_49_defever_salon_port_seating	19
35_2777975_49_defever_galley1	19
36_2777975_49_defever_galley2	20
37_2777975_49_defever_pilothouse	20
38_2777975_49_defever_pilothouse_port	20
39_2777975_49_defever_pilothouse_starboard	20
40_2777975_49_defever_pilothouse_helm	20
41_2777975_49_defever_pilothouse_seating	20
42_2777975_49_defever_master_stateroom	21
43_2777975_49_defever_master_stateroom_port	21
44_2777975_49_defever_master_stateroom_starboard	21
45_2777975_49_defever_master_stateroom_forward	21
47_2777975_49_defever_master_stateroom_head	21
46_2777975_49_defever_master_stateroom_aft	21
48_2777975_49_defever_master_stateroom_shower	22
49_2777975_49_defever_guest_stateroom	22
50_2777975_49_defever_guest_stateroom_port	22

51_2777975_49_defever_guest_stateroom_starboard	22
52_2777975_49_defever_guest_head	22
53_2777975_49_defever_washer_dryer	22
54_2777975_49_defever_engine_room_forward	23
55_2777975_49_defever_engine_room_aft	23
56_2777975_49_defever_port_main_engine	23
57_2777975_49_defever_starboard_main_engine	23
58_2777975_49_defever_racor_fuel_filters	23
59_2777975_49_defever_fuel_manifold	23
61_2777975_49_defever_gulf_coast_fuel_filter	24
60_2777975_49_defever_fuel_polishing_system	24
63_2777975_49_defever_stabilizer_system	24
62_2777975_49_defever_oil_change_system	24
64_2777975_49_defever_port_stabilizer_head	24
65_2777975_49_defever_starboard_stabilizer_head	24
67_2777975_49_defever_water_heater	25
66_2777975_49_defever_espa_heating_system	25
68_2777975_49_defever_engine_room_work_bench	25
69_2777975_49_defever_generator_sound_box	25
70_2777975_49_defever_generator	25
71_2777975_49_defever_generator_racor_fuel_filter	25
72_2777975_49_defever_inverter_charger	26
73_2777975_49_defever_house_battery_bank	26
CONTACTS	27
Contact details	27
Telephones	27
Office hours	27
Address	27

# SPECIFICATIONS

## Overview

Lioness is a 1991 49' DeFever raised pilothouse trawler in good condition. She offers twin Perkins 240 HP main engines, Westerbeke 8 kW generator, Magnum 2.000 watt inverter, Espar diesel fired heating system, oil changing system, fuel polishing system, Vetus bowthruster, Naiad stabilizers, 2015 AB 11' aluminum hull RIB with Tohatsu outboard, clean uncluttered interior and a 2 stateroom 2 head layout and raised pilothouse design. Her sellers have owned her since 2014 and just moved to a larger yacht.

## Basic Information

Category: Trawler Yacht	Model Year: 1991
Year Built: 1991	Country: United States

## Dimensions

LOA: 49' 0" (14.94m)	Beam: 15' 0" (4.57m)
Min Draft: 4' 9" (1.45m)	Max Draft: 4' 9" (1.45m)
Clearance: 14' 5" (4.39m)	

## Speed, Capacities and Weight

Cruise Speed: 8 Kts. (9 MPH)	Max Speed: 9 Kts. (10 MPH)
Displacement: 50000 Pounds	Water Capacity: 400 Gallons
Holding Tank: 40 Gallons	Fuel Capacity: 900 Gallons

## Accommodations

Total Cabins: 2	Total Berths: 3
Total Heads: 2	

## Hull and Deck Information

Hull Material: Fiberglass

## Engine Information

---

<b>Engines:</b> 2	<b>Manufacturer:</b> Perkins
<b>Model:</b> TW 33246	<b>Engine Type:</b> Inboard
<b>Fuel Type:</b> Diesel	

---

## DETAILED INFORMATION

---

### MAIN DESCRIPTION

---

Lioness is a 1991 49' DeFever raised pilothouse trawler in good condition. She offers twin Perkins 240 HP main engines, Westerbeke 8 kW generator, Magnum 2.000 watt inverter, Espar diesel fired heating system, oil changing system, fuel polishing system, Vetus bowthruster, Naiad stabilizers, 2015 AB 11' aluminum hull RIB with Tohatsu outboard, clean uncluttered interior and a 2 stateroom 2 head layout and raised pilothouse design. Her sellers have owned her since 2014 and just moved to a larger yacht.

### 49' DeFever Overview

---

Lioness is a 1991 49' DeFever raised pilothouse trawler in good condition and is the rare, popular Plan B layout. She offers twin Perkins 240 HP main engines, Westerbeke 8 kW generator, Magnum 2.000 watt inverter, Espar diesel fired heating system, oil changing system, fuel polishing system, Vetus bowthruster, Naiad stabilizers, 2015 AB 11' aluminum hull RIB with Tohatsu outboard, clean uncluttered interior and a 2 stateroom 2 head layout and raised pilothouse design. Her sellers have owned her since 2014 and just moved to a larger yacht. Lioness is a veteran of Alaska, Haida Gwaii and the west Coast of Vancouver Island. If you're looking for a safe, comfortable yet adventurous family cruiser, she fits your needs.

### 49' DeFever Vessel Walkthrough

---

From the hard top covered aftdeck, you can walk out either side deck to the foredeck, step up a ladder to the flybridge or walk into the salon via the double teak & glass doors. Once inside the salon, you will find wrap-around seating and a table to port, 2 lounge chairs and a folding teak table to starboard, entertainment/storage cabinet starboard forward and the galley with counter and 2 stools port forward. Walk forward and step up into the raised pilothouse with a side deck access door on each side or step down into the master stateroom, since this is a Plan B layout. There is a stairwell starboard forward in the pilothouse down to the guest stateroom forward and master stateroom forward entrance. Access to the engine room is via the lazarette or a sole hatch in the galley.

The headroom in the salon is 6'6", 6'4" on the aftdeck, 6'4" in the pilothouse, 7' in the guest stateroom, 6'5" in the master stateroom and 6'4" in the master stateroom shower. The master stateroom berth is 6'5" long and the three guest stateroom berths are 6'5", 6'9" and 7'2".

### 49' DeFever Accommodations

---

Lioness offers a master stateroom with queen size berth amidships with an ensuite head with enclosed shower; and a guest stateroom forward with the two original single berths and a third custom single berth.

### 49' DeFever Salon

---

The salon offers opening side windows with blinds, double teak & glass doors to the aftdeck, carpet, wrap-around seating with storage and a table to port, galley counter with 2 stools port forward, entertainment/storage cabinet starboard forward, 2 lounge chairs and folding teak table to starboard and a shelf.

### 49' DeFever Galley

---



The galley is port forward in the salon.

- Nova Kool refrigerator/freezer
- Dickinson Mediterranean stainless steel 3 burner propane cooktop and oven
- GE Turntable microwave oven
- Large stainless steel sink
- Storage cabinets and drawers
- Opening side window
- Porcelain tile heat resistant counter top
- Teak parquet sole

---

## 49' DeFever Dining

---

Dining space is available at the salon table or the pilothouse table.

---

## 49' DeFever Master Stateroom

---

Since Lioness is a Plan B layout, the amidships master stateroom has an entrance directly from the salon and one forward from the guest companionway. There is a queen size berth, shelf, storage cabinets and drawers, 3 hanging lockers, carpet, 2 mirrors, reading lights 2 portlights with curtains and an ensuite head with enclosed shower.

---

## 49' DEFEVER GUEST STATEROOM

---

The guest stateroom is forward and offers three single size berths, storage drawers and cabinets, hanging locker, 4 portlights with curtains, overhead hatch reading lights and anchor chain locker access. The guest head is to port just aft of the stateroom.

---

## 49' DeFever Laundry

---

- Kariba washer/dryer

---

## 49' DeFever Pilothouse

---

The raised pilothouse offers a helm forward with storage underneath, side deck access door on each side, wrap-around benchseat/storage and double pedestal table aft, storage cabinet, reading lights, fans and a shelf. The seating converts into a double size berth and there is a privacy curtain.

---

## 49' DeFever Flybridge

---

The flybridge offers a non-skid deck, hinged Radar arch, raised helm/seating area forward, wrap-around seating with storage, storage cabinet and tender storage aft.

---

## 49' DeFever Aftdeck

---

The aftdeck offers a hardtop, wing door to each side deck, non-skid deck, Eisenglass enclosure, aft control station, lazarette/engine room access, double teak & glass doors to the salon, stainless steel and teak ladder to the flybridge and transom gate to the swimplatform.

---

## 49' DeFever Audio/Visual Equipment

---

- Sharp flat screen TV in the salon
- JBL interior speakers

---

## 49' DeFever Electronics

---

- Garmin 24xd Radar
- Garmin GPSMap 7610 xsv multi-function display in the pilothouse
- Garmin GPSMap 7607 multi-function display on the flybridge
- Lowrance Elite-7m fishfinder/chart plotter in the pilothouse
- ComNav 1001 autopilot with 101 wired remote in the pilothouse
- Ritchie Powerdamp magnetic compass in the pilothouse and on the flybridge
- Furuno RD-33 navigational data organizer in the pilothouse
- Icom IC-M506 VHF in the pilothouse
- Icom IC-M424GVHF in the pilothouse
- Weems & Plath clock and barometer in the pilothouse
- Weems & Plath clock in the salon
- Intercom system

---

## 49' DeFever Electrical System

---

- Westerbeke 8.0BTD 8kW generator with approximately 2,076 hours
- Magnum MS2012 2,000 watt inverter/charger with remote panel
- 12 X Full River DC 24-6 Group GC2 house batteries
- 2 X West Marine 15020233 generator start batteries (2020)
- 2 X Lifeline GPL-8DL engine start batteries
- 2 X Motorola 160 amp alternators

- Balmar multi-stage voltage regulators
- Balmar centerfielder charging control system
- Balmar battery monitor system in the pilothouse
- 30 amp shore power cord
- 12 vdc outlet on the aftdeck, and in the pilothouse
- 2 X 110 vac outlets on the flybridge and each side deck
- Blue Sea battery switches

---

## 49' DeFever Engine/Mechanical Equipment

---

- Twin Perkins TW 33246 240 HP main engines with approximately 6,062 hours
- Borg Warner Velvet Drive S7000 gearboxes
- Dripless shaft seals
- Groco sea strainers
- Teleflex engine controls
- SeaStar hydraulic steering system
- Fuel manifold
- Racor 900FG fuel filter for each main engine with remote vacuum gauge
- Racor 500FG fuel filter for the generator
- Reverso fuel polishing system
- Gulf Coast fuel polishing system
- Oil change system
- Bennett trim tabs
- Naiad 201 stabilizer system
- Vetus bowthruster
- Espar diesel fired heating system
- Kuuma stainless steel 20 gallon water heater (2016)
- Paragon fresh water system pump and a back up pump
- Groco fresh water system accumulator tank
- Dometic electric heads
- Engine room workbench

- Maintenance records
- Spare propellers

---

## 49' DeFever Deck Equipment

---

- Maxwell 2200 anchor windlass with foot controls
- Lewmar 110 LB claw anchor
- Spare Danforth anchor
- Stainless steel rails forward and teak cap rails on each side
- Stainless steel deck hardware
- Stainless steel fender racks
- Non-skid decks
- Foredeck storage box
- Washdown fore and aft
- Portuguese Bridge storage lockers and foredeck gate
- Windshield and window covers
- Boarding gate on each side
- Bases and wiring for down riggers
- Teak swimplatform
- Stainless steel swim ladder

---

## 49' DEFEVER TENDER

---

- AB 2015 11' aluminum hull RIB
- Tohatsu 20 HP 4 stroke outboard
- Nick Jackson 1,000 LB tender davit
- Stainless steel outboard davit

---

## 49' DeFever Safety and Fire Protection

---

- Fireboy engine room fire suppression system
- Fireboy emergency engine shutdown system
- Fireboy-Xintex carbon monoxide detector in the master stateroom
- Xintex propane fume detector in the galley

- Fire extinguishers
- First Alert smoke detectors
- Rule bilge pumps
- Johnson 4,000 gph bilge pump
- RVS security camera system
- Go searchlight
- Newmar loudhailer

## 49' DeFever Exclusions

---

- Sellers' personal belongings
- Artwork
- Dehumidifiers

## DISCLAIMER

---

The Company offers the details of this vessel in good faith but cannot guarantee or warrant the accuracy of this information nor warrant the condition of the vessel. A buyer should instruct his agents, or his surveyors, to investigate such details as the buyer desires validated. This vessel is offered subject to prior sale, price change, or withdrawal without notice.

## Exclusions

---

Owner's personal belongings.

## Disclaimer

---

The Company offers the details of this vessel or yacht in good faith but cannot guarantee or warrant the accuracy of this information nor warrant the condition of the vessel. A buyer should instruct his representatives, agents, or his surveyors, to investigate such details as the buyer desires validated. This vessel or yacht is offered subject to prior sale, price change, or withdrawal without notice.

# PHOTOS

0\_2777975\_49\_defever\_starboard\_profile



1\_2777975\_49\_defever\_starboard\_aft\_profile



2\_2777975\_49\_defever\_port\_profile



3\_2777975\_49\_defever\_port\_forward\_profile



4\_2777975\_49\_defever\_port\_aft\_profile



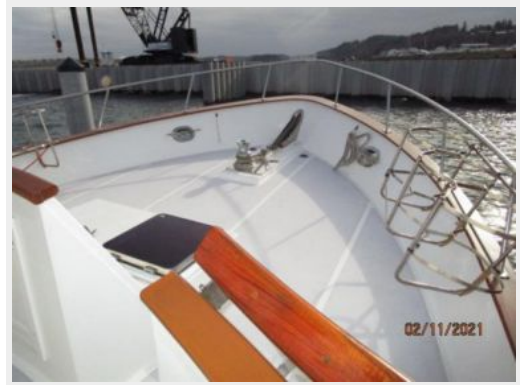
5\_2777975\_49\_defever\_anchor\_windlass



6\_2777975\_49\_defever\_foredeck1



7\_2777975\_49\_defever\_foredeck2



8\_2777975\_49\_defever\_foredeck\_aft



9\_2777975\_49\_defever\_portuguese\_bridge1



10\_2777975\_49\_defever\_portuguese\_bridge2



11\_2777975\_49\_defever\_port\_side\_deck1





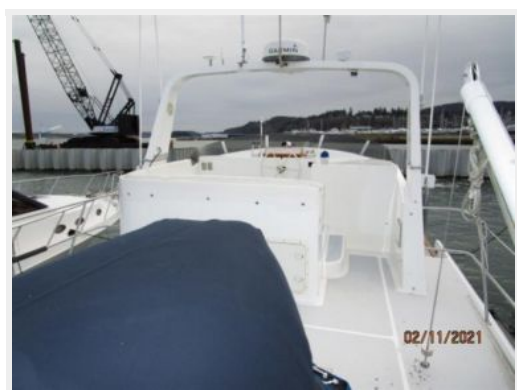
12\_2777975\_49\_defever\_port\_side\_deck



13\_2777975\_49\_defever\_starboard\_side\_deck



14\_2777975\_49\_defever\_flybridge\_forward1



15\_2777975\_49\_defever\_flybridge\_forward2



16\_2777975\_49\_defever\_flybridge\_aft



17\_2777975\_49\_defever\_flybridge\_helm





18\_2777975\_49\_defever\_flybridge\_seating



19\_2777975\_49\_defever\_flybridge\_radar\_arch\_hinge



20\_2777975\_49\_defever\_tender



21\_2777975\_49\_defever\_tender\_davit



22\_2777975\_49\_defever\_outboard\_davit



23\_2777975\_49\_defever\_aftdeck1



24\_2777975\_49\_defever\_aftdeck2



25\_2777975\_49\_defever\_aftdeck\_port



26\_2777975\_49\_defever\_aftdeck\_starboard



27\_2777975\_49\_defever\_aftdeck\_control\_station



28\_2777975\_49\_defever\_swimplatform



29\_2777975\_49\_defever\_salon\_forward





30\_2777975\_49\_defever\_salon\_aft



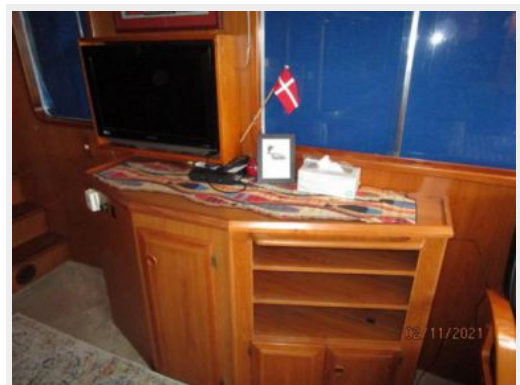
31\_2777975\_49\_defever\_salon\_port



32\_2777975\_49\_defever\_salon\_starboard



33\_2777975\_49\_defever\_salon\_starboard\_forward



34\_2777975\_49\_defever\_salon\_port\_seating



35\_2777975\_49\_defever\_galley1



36\_2777975\_49\_defever\_galley2



37\_2777975\_49\_defever\_pilothouse



38\_2777975\_49\_defever\_pilothouse\_port



39\_2777975\_49\_defever\_pilothouse\_starboard



40\_2777975\_49\_defever\_pilothouse\_helm



41\_2777975\_49\_defever\_pilothouse\_seating





42\_2777975\_49\_defever\_master\_stateroom



43\_2777975\_49\_defever\_master\_stateroom\_port



44\_2777975\_49\_defever\_master\_stateroom\_starboard 45\_2777975\_49\_defever\_master\_stateroom\_forward



47\_2777975\_49\_defever\_master\_stateroom\_head

46\_2777975\_49\_defever\_master\_stateroom\_aft



48\_2777975\_49\_defever\_master\_stateroom\_shower



49\_2777975\_49\_defever\_guest\_stateroom



50\_2777975\_49\_defever\_guest\_stateroom\_port



51\_2777975\_49\_defever\_guest\_stateroom\_starboard



52\_2777975\_49\_defever\_guest\_head



53\_2777975\_49\_defever\_washer\_dryer





54\_2777975\_49\_defever\_engine\_room\_forward



55\_2777975\_49\_defever\_engine\_room\_aft



56\_2777975\_49\_defever\_port\_main\_engine



57\_2777975\_49\_defever\_starboard\_main\_engine



58\_2777975\_49\_defever\_racor\_fuel\_filters



59\_2777975\_49\_defever\_fuel\_manifold



61\_2777975\_49\_defever\_gulf\_coast\_fuel\_filter



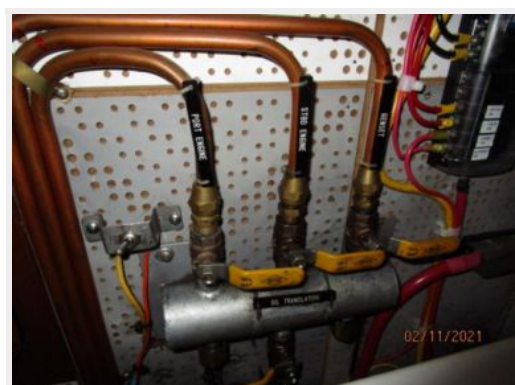
60\_2777975\_49\_defever\_fuel\_polishing\_system



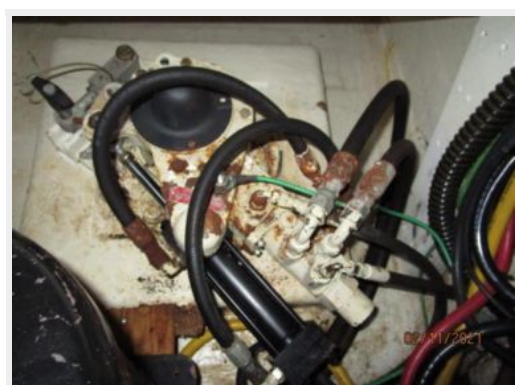
63\_2777975\_49\_defever\_stabilizer\_system



62\_2777975\_49\_defever\_oil\_change\_system



64\_2777975\_49\_defever\_port\_stabilizer\_head

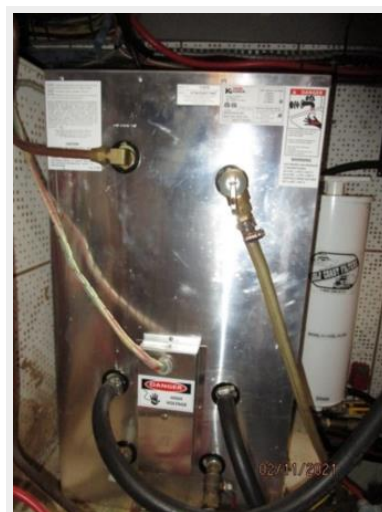


65\_2777975\_49\_defever\_starboard\_stabilizer\_head





67\_2777975\_49\_defever\_water\_heater



66\_2777975\_49\_defever\_espa\_heating\_system



68\_2777975\_49\_defever\_engine\_room\_work\_bench



69\_2777975\_49\_defever\_generator\_sound\_box



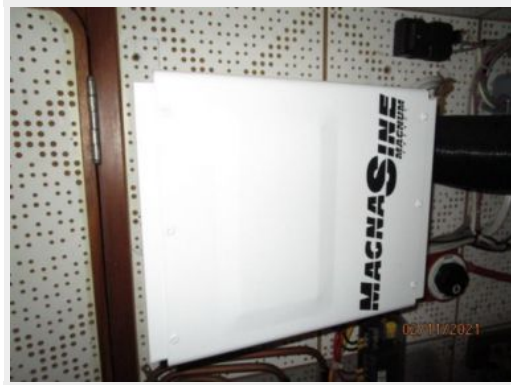
70\_2777975\_49\_defever\_generator



71\_2777975\_49\_defever\_generator\_racor\_fuel\_filter



72\_2777975\_49\_defever\_inverter\_charger



73\_2777975\_49\_defever\_house\_battery\_bank



# CONTACTS

---

Andrey Shestakov, leading yacht broker of the sales department of Shestakov Yacht Sales Inc. Shestakov Yacht Sales Inc., the official representative of the Miami/Fort Lauderdale FL headquarters.

## Contact details

---

Email:  
**andrey@shestakovyachtsales.com**

Web: [shestakovyachtsales.com/en/](http://shestakovyachtsales.com/en/)

## Telephones

---

USA: **+1(954)274-4435**

## Office hours

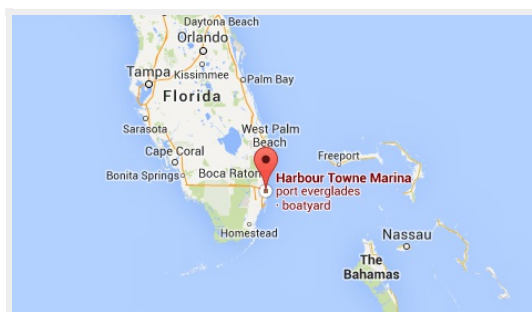
---

Monday – Saturday: **9:00 - 21:00 EDT**

Sunday: **closed**

## Address

---



Harbour Towne Marina, 850 NE 3rd St,  
STE 213, Dania, FL 33004