

MANGUSTA 108 — MANGUSTA



Builder: MANGUSTA

Year Built: 2002

Model: Mega Yacht

Price: PRICE ON APPLICATION

Location: United States

LOA: 108' 0" (32.92m)

Beam: 23' 0" (7.01m)

Max Draft: 4' 0" (1.22m)

Cruise Speed: 25 Kts. (29 MPH)

Our experienced yacht broker, Andrey Shestakov, will help you choose and buy a yacht that best suits your needs **Mangusta 108 — MANGUSTA** from our catalogue. Presently, at Shestakov Yacht Sales Inc., we have a wide variety of yachts available on our sale's list. We also work in close contact with all the big yacht manufacturers from all over the world.

If you would like to buy a yacht **Mangusta 108 — MANGUSTA** or would like help answering any questions concerning purchasing, selling or chartering a yacht, please call **+1(954)274-4435**

TABLE OF CONTENTS

TABLE OF CONTENTS	2
SPECIFICATIONS	3
Overview	3
Basic Information	3
Dimensions	3
Speed, Capacities and Weight	3
Accommodations	3
Hull and Deck Information	3
Engine Information	4
DETAILED INFORMATION	5
Extensive Refit	5
Miscellaneous	5
Accommodations	5
Communications & Bridge	6
Additional Details	7
Equipment on Board	8
Engine Room	9
Exclusions	9
Disclaimer	9
PHOTOS	11
CONTACTS	15
Contact details	15
Telephones	15
Office hours	15
Address	15

SPECIFICATIONS

Overview

PRELIMINARY SPECS & PICTURES* There is only one way to describe this beauty: ABSOLUTELY STUNNING. Huge refit all documented. Make this 108 Mangusta the most beautiful worldwide. Her timeless styling by Stefano Righini includes beautiful furnishings and sumptuous seating throughout her living areas, creating an elegant and comfortable environment, ideal to relax with family and friends. Contemporary interiors by Barth Italy.

Basic Information

Category: Mega Yacht

Model Year: 2002

Year Built: 2002

Country: United States

Dimensions

LOA: 108' 0" (32.92m)

Beam: 23' 0" (7.01m)

Max Draft: 4' 0" (1.22m)

Speed, Capacities and Weight

Cruise Speed: 25 Kts. (29 MPH)

Water Capacity: 528 Gallons

Fuel Capacity: 3170 Gallons

Accommodations

Total Cabins: 4

Hull and Deck Information

Hull Material: Fiberglass

Engine Information

Engines: 2

Manufacturer: MTU

Model: 4000 M90

Engine Type: Inboard

Fuel Type: Diesel

DETAILED INFORMATION

Extensive Refit

Everything about the NEOPRENE is exceptional. From her head-turning matte black exterior finish to her sumptuous interior, she is truly one of a kind. She underwent an extensive refit from 2016/2019 and shows in excellent condition.

Over Half a Million Dollars in Refit in 2020:

- New Exterior Teak Deck
- New Exhaust System
- New Power Conversion/Atlas
- New Sound System
- New Side Boarding Ladder
- Deck Receivers
- New Carpet Runners
- New AC compressor and all AC fully serviced
- Aft deck substrate built-up

Contact us today to get the full list of upgrades and refits!

Miscellaneous

- Overmarine Mangusta 108 Open Top 2002 - Hull Number 7
- 181GT
- Jet Drive
- 5 Crew, 9 Guests
- Cruising Speed 25/28 Knots
- Maximum Speed 32 Knots
- Fuel Capacity 12,000 Litres, Daily Tank 1000 Litres
- Fresh Water Capacity 2000 Litres
- Black and Grey tanks – (Combined) – Capacity 2000 Litres

Accommodations

- **OWNER**
- Full beam Owners cabin located on the lower deck mid ships

- King sized bed
 - En-suite bathroom
 - Walk in wardrobe
 - TV with Sky
-
- **VIP**
 - VIP double guest cabin located on the lower deck forward port side
 - En suite bathroom
 - TV with Sky
-
- **DOUBLE CABIN**
 - Double guest cabin located on the lower deck mid starboard side
 - En suite bathroom
 - T V
-
- **BUNK CABIN**
 - Quadruple cabin located on the lower deck forward port side
 - 4 x bunks
 - T V
 - En suite bathroom
-
- **CREW**
 - Accommodation for up to 5 crew members
 - Cabin 1 located forward and next the galley (x2 crew)
 - Cabin 2 located on foredeck (x3 crew)
 - Each with en-suite bathroom

Communications & Bridge

- VH - X2 IC-M323G
- AISNAVTEX - Furuno NX-700 Navtex
- Autopilot - AP9 MK3 Autopilot HR-1012
- GPS - Furuno GPS type 39 & NorthStar 952X GPS
- Radar - Furuno Radar type FR-2105 X-Band Radar
- Depth Sounder - Raymarine Pack I70s, DST800 transducer inc' sea temp.
- Chart Plotter - TimeZero chart plotter. MaxSea

- Automatic Pilot - Robertson auto pilot AP9 MkIII
- Wind Instruments -- Raymarine wind instruments
- DSC controller
- Searchlight - Mast mounted
- Mast Mounted EPIRB
- Bridge mounted SAR

Additional Details

ELECTRICAL SYSTEMS—

Shore Power - 220/380V AC with transformer

Converter - 2x 220/24V

Batteries -24V

Electricity -24V

TANKS, CONSUMPTION & RANGE—

Range - 380nm

Fuel Cap- 12,000 l

Fuel Day Cap - 1,000 l

Water Cap - 2,000 l

Black & Grey Tanks - 2,000 l

Consumption - 750 – 800 l/h @ 25 – 28 knots

Boiler - 3x tanks

AUDIO VISUAL EQUIPMENT —

Individual fore deck and aft deck sound systems

Media systems: SKY TV, Apple TV, Media server

Satellite Television: Seatel satellite system

GALLEY—

Miele Oven

Samsung microwave

Miele cooking range with induction top

Extractor fan

Miele dishwasher

Equipment on Board

Jets toilet system

- X2 MTU 12V4000 M90, 2750 Hp with 2050 Hrs
- X2 Kohler Generators Stb Side 4973 Hrs, Port Side 4938 Hrs
- Rolls-Royce Kamewa Steering pack
- Alfa Laval MAB 104B -14/24
- Idromar Mini Compact Water Maker
- Water softener
- FP-100-1GRD Hamman System
- Fire and Bilge Pumps
- Frigid AC Chiller, x3 compressors capacity 220BTU Summer / 260BTU Winter
- PTO Bow thruster
- MaxSea ECS
- X2 IC-M323G VHF's
- No HF
- AIS
- Furuno GP39 GPS (and) NorthStar 952X GPS
- Furuno FR-2105 X-Band Radar – NO ARPA
- Furuno NX-700 Navtex
- AP9 MK3 Autopilot
- HR-1012 Searchlight
- Mast mounted EPIRB
- Bridge mounted SART
- X3 Roof mounted 8-person, deep sea SOLAS B life rafts
- ER CCTV
- Windex including sea temperature
- Individual fore deck and aft deck sound systems
- Four post bimini installed on the bow, (original clam shell bimini still on board)
- X3 sea bobs
- X2 Kayaks
- X1 Inflatable Kayak

- X2 Paddleboards
- X1 Lazybouy pontoon 4m x 2m
- X1 Master cabin (x2 Persons), TV with SKY en-suite bathroom and wardrobe
- X1 Lower salon with TV with SKY
- X1 Single guest cabin, TV and en-suite
- X1 Bunk cabin (x4 persons), bunk beds, TV and en-suite
- X1 VIP cabin (2 persons), TV and en-suite
- Upper salon, TV with SK and dining area
- Media systems: SKY TV, Apple TV, Media server
- Miele domestic dishwasher, washing
- Miele washer & dryer
- Miele domestic Induction hob and oven
- X2 Frigid commercial fridges
- X2 Frigid commercial freezers
- X1 Frigid commercial fridge / freezer
- X1 Additional SMEG chiller fridge - not working.
- Small ice maker, toaster, coffee machine, ice cream maker
- X3 boiler tanks

Engine Room

- Steering: Rolls-Royce Kamewa Steering pack
- Gear Boxes: 2 x ZF gear boxes type BW 465-1 with ratio 2.025:1
- Fuel Filters: Alfa Laval MAB 104B -14/24
- Water Maker: Idromar Mini Compact Water Maker
- Water softener
- Waste Treatment: FP-100-1GRD Hamman System
- Air Conditioning: Frigid AC Chiller, 3 x compressors 220BTU Summer / 260BTU Winter
- Bow thruster: PTO Hydraulic bow thruster
- Fire/Bilge Pump: 1 x fire pump & 1 x bilge pump
- Rudder Angel Indicator: 1 x RI 35
- MaxSea ECS

Exclusions

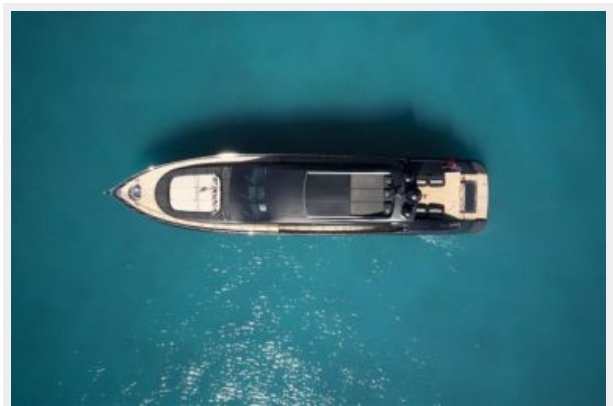
Owner's personal belongings.

Disclaimer

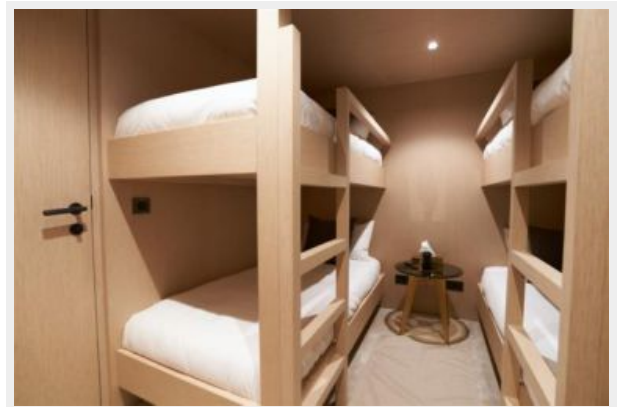
The Company offers the details of this vessel or yacht in good faith but cannot guarantee or warrant the accuracy of this information nor warrant the condition of the vessel. A buyer should instruct his representatives, agents, or his surveyors, to investigate such details as the buyer

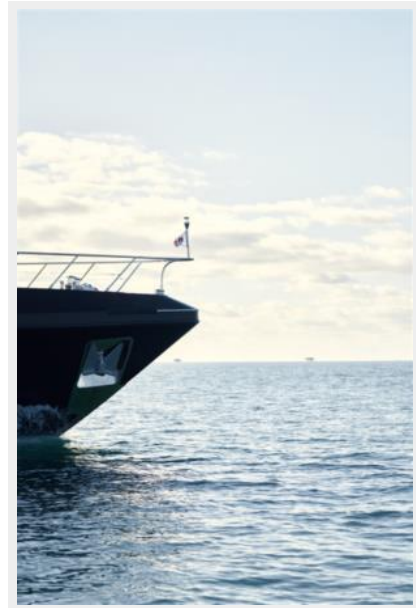
desires validated. This vessel or yacht is offered subject to prior sale, price change, or withdrawal without notice.

PHOTOS









CONTACTS

Andrey Shestakov, leading yacht broker of the sales department of Shestakov Yacht Sales Inc. Shestakov Yacht Sales Inc., the official representative of the Miami/Fort Lauderdale FL headquarters.

Contact details

Email: andrey@shestakovyachtsales.com

Web: shestakovyachtsales.com/en/

Telephones

USA: +1(954)274-4435

Office hours

Monday – Saturday: **9:00 - 21:00** EDT

Sunday: **closed**

Address



Harbour Towne Marina, 850 NE 3rd St,
STE 213, Dania, FL 33004