

FAR SIDE — CATALINA



Builder: CATALINA

Year Built: 1983

Model: Cruising Sailboat

Price: PRICE ON APPLICATION

Location: United States

LOA: 35' 7" (10.85m)

Beam: 11' 11" (3.63m)

Max Draft: 5' 10" (1.78m)

Our experienced yacht broker, Andrey Shestakov, will help you choose and buy a yacht that best suits your needs **Far Side — CATALINA** from our catalogue. Presently, at Shestakov Yacht Sales Inc., we have a wide variety of yachts available on our sale's list. We also work in close contact with all the big yacht manufacturers from all over the world.

If you would like to buy a yacht **Far Side — CATALINA** or would like help answering any questions concerning purchasing, selling or chartering a yacht, please call **+1(954)274-4435**

TABLE OF CONTENTS

TABLE OF CONTENTS	2
SPECIFICATIONS	4
Basic Information	4
Dimensions	4
Speed, Capacities and Weight	4
Accommodations	4
Hull and Deck Information	4
Engine Information	4
DETAILED INFORMATION	5
Description	5
Exclusions	7
Disclaimer	7
PHOTOS	8
photo 04	8
photo 02	8
photo 05	8
photo 07	8
photo 09	9
photo 08	9
photo 10	9
photo 11	9
photo 12	9
photo 13	9
photo 14	10
photo 15	10
photo 17	10
photo 16	10
photo 19	11

photo 18	11
photo 20	11
photo 21	11
photo 23	12
photo 22	12
photo 24	12
CONTACTS	13
Contact details	13
Telephones	13
Office hours	13
Address	13

SPECIFICATIONS

Basic Information

Category: Cruising Sailboat	Model Year: 1983
Year Built: 1983	Country: United States

Dimensions

LOA: 35' 7" (10.85m)	LWL: 30' 3" (9.22m)
Beam: 11' 11" (3.63m)	Max Draft: 5' 10" (1.78m)

Speed, Capacities and Weight

Displacement: 18081 Pounds	Water Capacity: 75 Gallons
Holding Tank: 20 Gallons	Fuel Capacity: 33 Gallons

Accommodations

Total Cabins: 2	Total Heads: 1
-----------------	----------------

Hull and Deck Information

Hull Material: Fiberglass

Engine Information

Engines: 1	Manufacturer: Universal
Engine Type: Inboard	Fuel Type: Diesel

DETAILED INFORMATION

Description

The Catalina 36 is built with a sea-kindly moderate displacement hull. It tracks surely and performs well in a variety of conditions. The deck is the classic trunk cabin configuration - proven, comfortable and functional. The main cabin and galley have received special attention to design and detail. The galley is a functional 'U' shape, with composite countertops, the sinks are near centerline for proper drainage underway. A large well insulated icebox is aft and a dry food locker is forward. A gimbaled, stainless steel LPG stove with oven is standard equipment. The main cabin can be arranged with a dinette or traditional table. The two seats and game table to starboard can be made into a settee or berth with the cushions provided.

The main cabin and all interior teak have warmth and durability. The 36 has teak hand rails and anodized spars. Engine access is excellent, with the one-piece, insulated enclosure removed. The hull is rugged, hand-laminated, solid fiberglass; The mast is stepped through the deck on the keel and has inline spreaders and fore and aft lower shrouds, a sturdy arrangement that is easy to tune.

Because the Catalina 36 is easily handled by a couple, has a big comfortable cockpit, a spacious interior with two private cabins and the integrity to pursue cruising dreams, many experienced sailors consider the Catalina 36 the perfect boat for their sailing lifestyle.

General Specifications

Hull Type: Fin keel with Spade Rudder

Rigging Type: Masthead Sloop

LOA: 35.58 ft 7

LWL: 30.25 ft 3

Beam: 11.92 ft 11

Draft: 5.83 ft 10

Displacement: 18081 lbs.

Ballast: 6,592 lbs.

Ballast Type: Cast Iron

Builder: Catalina Yachts (USA)

Designer: Frank Butler

Auxiliary Power: Universal 25HP (2675 Hours)

Water: 75 gals

Fuel: 33 gals

Holding: 20 gal

Accommodations

V-berth with filler, storage shelves and hanging locker forward. Aft and to port is the head, vanity and shower. Opposite is storage and large hanging locker. Proceeding aft to the salon and to port is a U-shaped convertible dinette. To starboard is a game table with fore and aft seats that convert to a single berth. The U-shaped galley is all the way aft on port. Opposite the galley is a chart table with swivel seat. The aft cabin follows the chart table with a double berth, hanging locker and privacy door. The interior features teak and holly sole, newer upholstery and a varnished interior.

Galley

- Propane Stove, 2 Burners with Oven
- Double Sink
- Refrigeration Alder Barber
- Pressurized Water System
- 6-Gal Water heater (2014)

Misc:

- Full Cockpit enclosure (2017)
- Batteries 1 group 24 starting, 3 group 24 house (2020)
- Fenders
- Docklines
- Full cockpit enclosure
- Cockpit cushions (new 2014)
- Full winter storage canvas cover (2017)
- Lazy Jacks (2020)
- Symmetrical spinnaker with pole
- VC 17 bottom paint

Electronics

- Uniden VHF
- Datamarine Depth
- Datamarine Speed
- Datamarine WP/WS
- Autohelm 4000 Autopilot
- Raymarine radar & chartplotter
- Flatscreen TV / DVD

The Company offers the details of this vessel in good faith but cannot guarantee or warrant the accuracy of this information nor warrant the condition of the vessel. A buyer should instruct his agents, or his surveyors, to investigate such details as the buyer desires validated. This vessel is offered subject to prior sale, price change, or withdrawal without notice.

Exclusions

Owner's personal belongings.

Disclaimer

The Company offers the details of this vessel or yacht in good faith but cannot guarantee or warrant the accuracy of this information nor warrant the condition of the vessel. A buyer should instruct his representatives, agents, or his surveyors, to investigate such details as the buyer desires validated. This vessel or yacht is offered subject to prior sale, price change, or withdrawal without notice.

PHOTOS

photo 02



photo 04



photo 05



photo 07



photo 08



photo 09

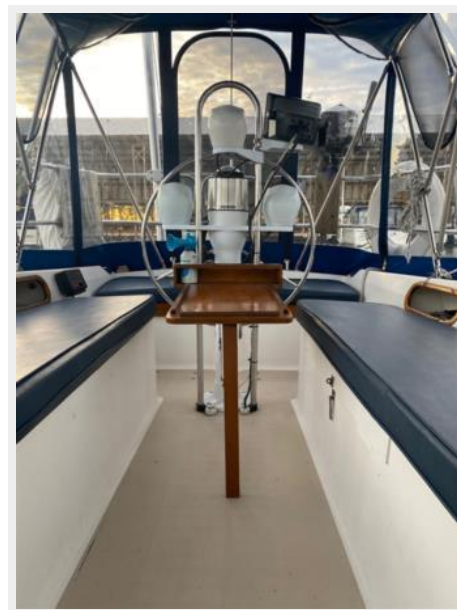


photo 10



photo 11



photo 12



photo 13



photo 14



photo 15

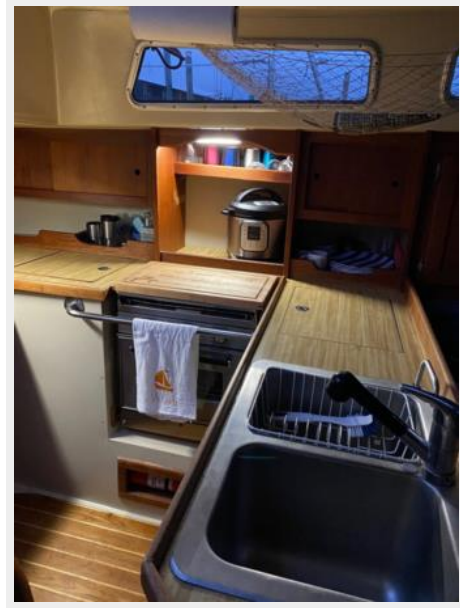


photo 17



photo 16



photo 18



photo 19



photo 20



photo 21



photo 22

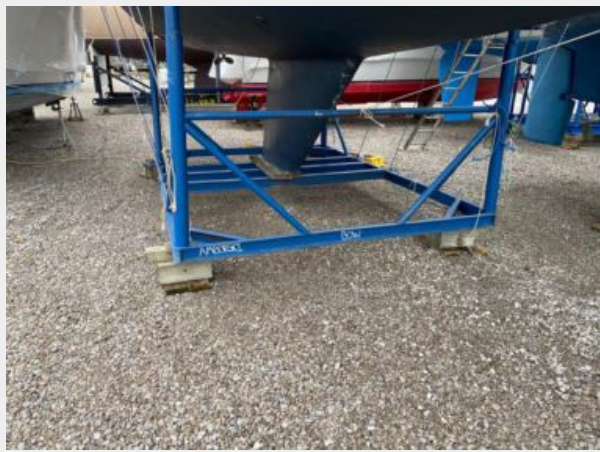


photo 23



photo 24



CONTACTS

Andrey Shestakov, leading yacht broker of the sales department of Shestakov Yacht Sales Inc. Shestakov Yacht Sales Inc., the official representative of the Miami/Fort Lauderdale FL headquarters.

Contact details

Email: **andrey@shestakovyachtsales.com**

Web: shestakovyachtsales.com/en/

Telephones

USA: **+1(954)274-4435**

Office hours

Monday – Saturday: **9:00 - 21:00 EDT**

Sunday: **closed**

Address



Harbour Towne Marina, 850 NE 3rd St,
STE 213, Dania, FL 33004