

MOSAIQUE — PROTEKSAN-TURQUOISE



Builder: Proteksan-Turquoise

Year Built: 2002

Model: Mega Yacht

Price: PRICE ON APPLICATION

Location: France

LOA: 163' 9" (49.91m)

Beam: 30' 6" (9.30m)

Min Draft: 9' 7" (2.92m)

Max Draft: 9' 7" (2.92m)

Cruise Speed: 13 Kts. (15 MPH)

Max Speed: 15 Kts. (17 MPH)

Our experienced yacht broker, Andrey Shestakov, will help you choose and buy a yacht that best suits your needs **MOSAIQUE — Proteksan-Turquoise** from our catalogue. Presently, at Shestakov Yacht Sales Inc., we have a wide variety of yachts available on our sale's list. We also work in close contact with all the big yacht manufacturers from all over the world.

If you would like to buy a yacht **MOSAIQUE — Proteksan-Turquoise** or would like help answering any questions concerning purchasing, selling or chartering a yacht, please call **+1(954)274-4435**

TABLE OF CONTENTS

TABLE OF CONTENTS	2
SPECIFICATIONS	5
Overview	5
Basic Information	5
Dimensions	5
Speed, Capacities and Weight	6
Accommodations	6
Hull and Deck Information	6
Engine Information	6
DETAILED INFORMATION	7
MOSAIQUE 163' Proteksan-Turquoise 2002/2020 Tri Deck Motor Yacht	7
SPECS: MOSAIQUE 163' Proteksan-Turquoise 2002/2020 Tri Deck Motor Yacht	8
Exclusions	14
Disclaimer	14
PHOTOS	15
Profile: MOSAIQUE 163' 2002/2020 Proteksan Tri-Deck Motor Yacht	15
Aft: MOSAIQUE 163' 2002/2020 Proteksan Tri-Deck Motor Yacht	15
Jacuzzi: MOSAIQUE 163' 2002/2020 Proteksan Tri-Deck Motor Yacht	15
Aerial: MOSAIQUE 163' 2002/2020 Proteksan Tri-Deck Motor Yacht	15
Sun Deck: MOSAIQUE 163' 2002/2020 Proteksan Tri-Deck Motor Yacht	15
Sun Deck: MOSAIQUE 163' 2002/2020 Proteksan Tri-Deck Motor Yacht	15
Sun Deck: MOSAIQUE 163' 2002/2020 Proteksan Tri-Deck Motor Yacht	16
Sun Deck Lounging: MOSAIQUE 163' 2002/2020 Proteksan Tri-Deck Motor Yacht	16
Sun Deck Exercise: MOSAIQUE 163' 2002/2020 Proteksan Tri-Deck Motor Yacht	16
Bridge Deck Aft: MOSAIQUE 163' 2002/2020 Proteksan Tri-Deck Motor Yacht	16
Bridge Deck Aft: MOSAIQUE 163' 2002/2020 Proteksan Tri-Deck Motor Yacht	16
Bridge Deck Aft: MOSAIQUE 163' 2002/2020 Proteksan Tri-Deck Motor Yacht	16
Bridge Deck Aft Seating: MOSAIQUE 163' 2002/2020 Proteksan Tri-Deck Motor Yacht	17

Main Deck Aft: MOSAIQUE 163' 2002/2020 Proteksan Tri-Deck Motor Yacht	17
Main Salon: MOSAIQUE 163' 2002/2020 Proteksan Tri-Deck Motor Yacht	17
Main Salon: MOSAIQUE 163' 2002/2020 Proteksan Tri-Deck Motor Yacht	17
Main Salon: MOSAIQUE 163' 2002/2020 Proteksan Tri-Deck Motor Yacht	17
Main Salon Game Table: MOSAIQUE 163' 2002/2020 Proteksan Tri-Deck Motor Yacht	17
Dining Room: MOSAIQUE 163' 2002/2020 Proteksan Tri-Deck Motor Yacht	18
Dining Room: MOSAIQUE 163' 2002/2020 Proteksan Tri-Deck Motor Yacht	18
Master Private Salon: MOSAIQUE 163' 2002/2020 Proteksan Tri-Deck Motor Yacht	18
Master Stateroom: MOSAIQUE 163' 2002/2020 Proteksan Tri-Deck Motor Yacht	18
Master Suite: MOSAIQUE 163' 2002/2020 Proteksan Tri-Deck Motor Yacht	18
Master Bathroom: MOSAIQUE 163' 2002/2020 Proteksan Tri-Deck Motor Yacht	18
VIP: MOSAIQUE 163' 2002/2020 Proteksan Tri-Deck Motor Yacht	19
VIP Bathroom: MOSAIQUE 163' 2002/2020 Proteksan Tri-Deck Motor Yacht	19
Guest Stateroom 1 Queen: MOSAIQUE 163' 2002/2020 Proteksan Tri-Deck Motor Yacht	19
Guest Ensuite 1: MOSAIQUE 163' 2002/2020 Proteksan Tri-Deck Motor Yacht	19
Guest Stateroom 2 Queen: MOSAIQUE 163' 2002/2020 Proteksan Tri-Deck Motor Yacht	19
Guest Ensuite 2: MOSAIQUE 163' 2002/2020 Proteksan Tri-Deck Motor Yacht	19
Guest Stateroom 3: MOSAIQUE 163' 2002/2020 Proteksan Tri-Deck Motor Yacht	20
Guest Ensuite 3: MOSAIQUE 163' 2002/2020 Proteksan Tri-Deck Motor Yacht	20
Guest Stateroom 4 Twin: MOSAIQUE 163' 2002/2020 Proteksan Tri-Deck Motor Yacht	20
Guest Ensuite 4: MOSAIQUE 163' 2002/2020 Proteksan Tri-Deck Motor Yacht	20
Sky Lounge: MOSAIQUE 163' 2002/2020 Proteksan Tri-Deck Motor Yacht	20
Skylounge: MOSAIQUE 163' 2002/2020 Proteksan Tri-Deck Motor Yacht	20
Dining Detail: MOSAIQUE 163' 2002/2020 Proteksan Tri-Deck Motor Yacht	21
Dining Detail: MOSAIQUE 163' 2002/2020 Proteksan Tri-Deck Motor Yacht	21
Dining Detail: MOSAIQUE 163' 2002/2020 Proteksan Tri-Deck Motor Yacht	21
MOSAIQUE 163' 2002/2020 Proteksan Tri-Deck Motor Yacht	21
Layout GA: MOSAIQUE 163' 2002/2020 Proteksan Tri-Deck Motor Yacht	21
MOSAIQUE 163' 2002/2020 Proteksan Tri-Deck Motor Yacht	21

CONTACTS	23
Contact details	23
Telephones	23
Office hours	23
Address	23

SPECIFICATIONS

Overview

Key Features:

- Brand New “Blue Marlin” Exterior Paint Job 2020
- Interior Refresh 2020
- 6 Staterooms for up to 12 Guests
- Full Beam Master Suite
- Huge VIP On Main Deck
- Proven Charter Reputation, Buy a Charter Business
- Light, Bright, Airy, Refreshed Interior Design
- Oversized Windows
- Most Amazing Assitant and Best Business Partner Ever
- Transatlantic
- Caterpillar Engines Recently Rebuilt
- Quantum Zero Speed Stabilizers
- Lloyds Class (renewed 2021)

Basic Information

Category: Mega Yacht

Model Year: 2002

Year Built: 2002

Refit Year: 2020

Refit Type: Exterior Paint and Interior Refit

Country: France

Dimensions

LOA: 163' 9" (49.91m)

Beam: 30' 6" (9.30m)

Min Draft: 9' 7" (2.92m)

Max Draft: 9' 7" (2.92m)

Speed, Capacities and Weight

Cruise Speed: 13 Kts. (15 MPH)

Cruise Speed Range: 4500

Max Speed: 15 Kts. (17 MPH)

Gross Tonnage: 589 Pounds

Water Capacity: 6118.753068424 Gallons

Fuel Capacity: 22375.3728044 Gallons

Accommodations

Total Cabins: 6

Sleeps: 12

Total Heads: 8

Captain Cabin: True

Crew Berths: 6

Crew Sleeps: 12

Hull and Deck Information

Hull Material: Steel

Deck Material: Teak

Hull Configuration: Full Displacement

Hull Color: Blue

Exterior Designer: Dubois Naval Architects

Interior Designer: Kristina Ferrand

Engine Information

Engines: 2

Manufacturer: Caterpillar

DETAILED INFORMATION

MOSAIQUE 163' Proteksan-Turquoise 2002/2020 Tri Deck Motor Yacht

MOSAIQUE is a striking motor yacht with pedigree exterior design by world-renowned Dubois Naval Architects. Custom-built by Turkish shipyard Proteksan-Turquoise in 2002 and refit in 2020, she offers transatlantic capability and an abundance of oversized exterior deck space. At 163'9" (49.9m) in length, this immaculately presented yacht is a great charter yacht with proven track record and a strong charter reputation. MOSAIQUE presents a savvy sales opportunity for a commercially-minded owner keen on acquiring a yacht that is charter ready or to privately cruise the world in total comfort.

MOSAIQUE offers an abundance of exterior deck space. Multiple options for lounging and dining provide the feel of a large country house. The yacht features a generous sundeck for al fresco meals paired with an on-deck jacuzzi. Sunpads and loungers stretch the width of the deck, making this areas a sociable hub ideal for entertaining, as well as enjoying privacy at sea.

Clearly defined interior spaces encourage relaxation in an intimate setting. The main salon directly links to a games room, which in turn leads through sliding glass doors to the formal dining room for 12. The main deck areas are gracefully decorated with warm and modern palette set off by mahogany paneling, satinwood banding, and neutral soft furnishings. The upper deck sky lounge offers a charming alternative for guests to relax.

MOSAIQUE boasts six large staterooms on the main deck forward. The full-beam master suite sets the standard for the remaining five staterooms, featuring a king-sized bed, a spacious private study and bathroom lavishly decorated in onyx and marble. Another key feature that sets MOSAIQUE apart is the VIP also located on the main deck and featuring a queen-sized bed and en suite with full-sized bath tub.

The remaining four guest staterooms are located on the lower deck, complemented by a consistent design aesthetic that is evident throughout the yacht. Five of the guest cabins include Jacuzzi bath tubs. A fully integrated audio-visual system supplies all the cabins with a broad selection of entertainment options.

The bridge deck aft benefits from a light and airy interior tone. Outdoors on the aft deck, guests enjoy fine dining around an oval teak dining table that can seat up to 16. The flexible table

design features removable leaves to instantly create a more intimate dining experience, complemented by a Bimini when shade is required.

MOSAIQUE is a full displacement yacht with zero speed stabilizers making her extremely stable and comfortable, even in rough seas. Two Caterpillar 1100hp engines were recently overhauled, and she presents in turnkey condition having been excellently maintained. and fresh hull paint.

Key Features:

- Brand New “Blue Marlin” Exterior Paint Job 2020
- Interior Refresh in 2020
- 6 Staterooms for up to 12 Guests
- Full Beam Master Suite
- Huge VIP On Main Deck
- Proven Charter Reputation, Buy a Charter Business
- Light, Bright, Airy, Refreshed Interior Design
- Oversized Windows
- Transatlantic
- Caterpillar Engines Recently Rebuilt
- Quantum Zero Speed Stabilizers
- Lloyds Class (renewed 2021)

SPECS: MOSAIQUE 163' Proteksan-Turquoise 2002/2020 Tri Deck Motor Yacht

Main Characteristics

Year Built: 2002

Year Refit: 2020

Builder: Proteksan-Turquoise

Naval Architect: Dubois Naval Architects

Interior Designer: Kristina Ferrand

Hull Construction: Steel

Hull Configuration: Displacement

Length: 49.90m (163' 9")

Beam: 9.30m (30' 6")

Draft: 2.93m (9' 7")

Gross Tons: 589

Accommodation: 12 guests in 6 cabins

Total Crew: 12

Flag: Cayman Islands

Classification: ABS, MCA Compliant, ISM Compliant, Commercial

Speeds & Capacities

Cruising Speed: 12.5 Knots

Maximum Speed: 15 Knots

Range: 4500nm

Fuel Consumption 2 ME+1GE: 180 l/hr at cruising speed, 320l/hr at top speed

Machinery and Electrical

Main Engines: 2 x 1100hp Caterpillar Diesel

Engine Hours (March 2021): Since Major Overhaul: Port 4,859 Stbd 4,864

Fully overhauled: Winter 2015/2016

Generators: 2 x 160 Kw Caterpillar

Generator Hours (March 2021): Since Major Overhaul: Port 10,449 Stbd: 9,656

Fully overhauled: Winter 2015/2016

Gear Boxes: Reintjes WAF 541

Propulsion: 2 x Teignbridge 5 blade propellers

Fuel Separator: Alfa Laval MAB 103B

Electricity: 220V 50hz / 300V 50hz 3phase

Shore Power: 120 / 380V 1&3phase 50/60hz

Converter: Atlas 80Kw

Battery Services: 24V

Navigational Equipment

GPS : 1 x Simrad A170 + 1x Furuno GP170

Navtex: Sailor TT-3606E

VHF: 2 x Sailor 6222 VHF DSC

Plotter: Transas

Wind Gauge: B & G Hydra 2000

Echosounder: ELAC LAZ 5100

AIS: Simrad

Chart Display: Transas Navi Sailor 4000 MFD

Ancillary Equipment

Bow Thruster: CRAMM V2 20H

Fire and bilge pumps: 2 x Johnson

Sewage treatment system: Hamann Type 2

WCs: JET 69

Air Conditioning: Condaria WM-RE 120002

Stabilizers: Quantum Zero Speed

Tanks & Capacities

Fuel: 84,700 l

Grey Water: 14,450 l

Black Water: 2,266 l

Fresh Water: 23,162 l

Water Maker: 2 X HEM 900 l/hr

Safety and Security

Life Jackets: SOLAS Inflatable 38 x Adult, 6 x Child

Life rafts: 4 x 25 Person SOLAS A

Immersion Suits: 26 x Adult, 4 x Child

Security System: 5 x CCTV Cameras

Alarms: Servowatch

Electronic Location Aids: 1 x EPIRB, 2 x SART

Deck Equipment

Anchor Windlass: 2 x Muir VRC 15000

Capstans: 2 x Muir VC 13000

Anchors : x 2

Anchor Chains : x 2

Passerelle : Cramm 5.6m

Swim platform: 612 x 148cm

Accommodation

Main Deck

- Master full beam suite (cabin size 3m50 x 6m) with king sized bed (2m x 2m) is located forward on the main deck and boasts a spacious study, a separate seating area, and stunning bathroom with a Jacuzzi tub and steam shower, double vanity unit, lavishly decorated in onyx and marble.
- VIP stateroom (cabin size 3.4m x 4.2m) with large double bed (2m x 1m80) located mid-ship on the main deck with gorgeous ensuite bathroom and double vanity unit.

Lower Deck

- 2 x double guest cabins (cabin size 3.2m x 4m) both with double beds (2m x 1m80) both with ensuite bathrooms and single vanity units.
- 1 x double guest cabin (cabin size 3m x 4m) with double bed (2m x 1m55) ensuite bathroom with single vanity unit.
- 1 x twin guest cabin (cabin size 3m x 4m) with ensuite shower room and single vanity unit.

Communications Equipment

- Satcom C
- V-Sat
- Satellite and Cellular telephones
- WiFi

Audio Visual Equipment

- AV system with HD screens throughout the yacht updated with new releases (2016).
- Full surround sound cinema with pop up screen in the main saloon.
- Plasma or liquid crystal flat screen TV's throughout the yacht - makes and sizes below:
- Main Saloon - flat screen 50"
- Sky Lounge - flat screen LED 55"
- Master cabin - flat screen TV 41"
- All other cabins - flat screen TV 20"
- Sky TV (Mediterranean).
- Audio on demand system available throughout the yacht (inside & outside). Sound server and iPod docking stations in both saloons and all cabins.
- 2012 - improved sound system on boat deck.
- Playstation III
- Sony Wii

Galley & Laundry

Oven: 2 x Convothem

Microwave: 1 x Microwave Cooking

Dishwasher: 1 x Hobart

Fridge: x 4

Freezer: x 2

Washing Machine: 2 x Miele

Tumble Dryer: 3 x Miele

Ice Maker: x 3

Water Toys & Tenders (Not guaranteed with sale, showing what the yacht offers for charter)

- Zodiac Hurricane ZH 630 tender with a Volvo 220 z drive inboard diesel engine, seats 8 to 10
- 1 x 2019 jet ski, Sea Doo Spark 2-seater
- 1 x 3 person inflatable sofa
- 1 x 5 person sea wasp (banana) inflatable
- 2 x 1 person inflatable donuts
- 1 x 3 person airstream inflatable
- 3 sets of water skis
- 1 x Mono ski
- 1 x Knee board
- 1 x Surf Wakeboard

- Snorkeling equipment
- Fishing gear
- 2 x 2 seater inflatable kayaks.
- 1 x inflatable paddle board
- Gym equipment, recumbent bike, cross trainer

Refit/Maintenance

2021 (March)

- Special Class Surveys (Lloyds) renewal of all certification

2020

- Painting of the hull topsides
- Full Interior refit including: New Carpets and interior refurbishment and upgrade

2017

- Intermediate Class (Lloyds) Surveys

2014/2015

- Total interior refurbishment with new soft furnishings

2012

- New deckheads with LED lighting
- Improved sound system on Sundeck
- New door handles

- New "Garden Art" Retractable umbrellas on sundeck, recovered 2020
- New Illuminated gold name and logos fitted
- Various mechanical improvement

Exclusions

Owner's personal belongings.

Disclaimer

The Company offers the details of this vessel or yacht in good faith but cannot guarantee or warrant the accuracy of this information nor warrant the condition of the vessel. A buyer should instruct his representatives, agents, or his surveyors, to investigate such details as the buyer desires validated. This vessel or yacht is offered subject to prior sale, price change, or withdrawal without notice.

PHOTOS

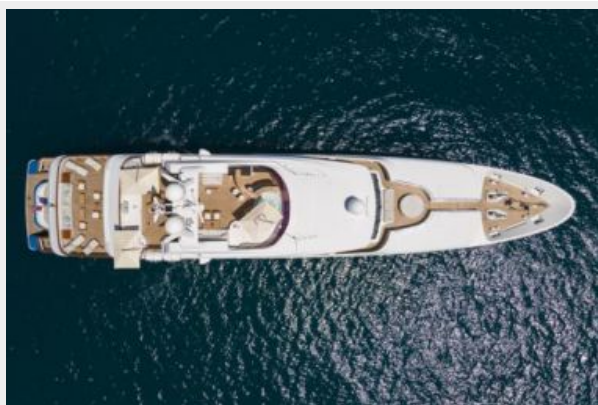
**Profile: MOSAIQUE 163' 2002/2020
Proteksan Tri-Deck Motor Yacht**



**Aft: MOSAIQUE 163' 2002/2020 Proteksan
Tri-Deck Motor Yacht**



**Aerial: MOSAIQUE 163' 2002/2020 Proteksan
Tri-Deck Motor Yacht**



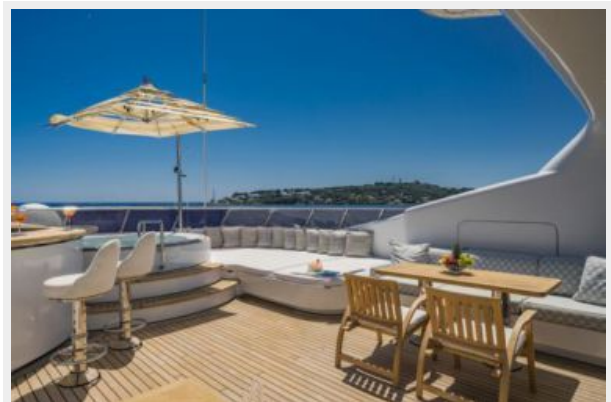
**Jacuzzi: MOSAIQUE 163' 2002/2020
Proteksan Tri-Deck Motor Yacht**



**Sun Deck: MOSAIQUE 163' 2002/2020
Proteksan Tri-Deck Motor Yacht**



**Sun Deck: MOSAIQUE 163' 2002/2020
Proteksan Tri-Deck Motor Yacht**



**Sun Deck: MOSAIQUE 163' 2002/2020
Proteksan Tri-Deck Motor Yacht**



**Sun Deck Lounging: MOSAIQUE 163'
2002/2020 Proteksan Tri-Deck Motor Yacht**



**Sun Deck Exercise: MOSAIQUE 163'
2002/2020 Proteksan Tri-Deck Motor Yacht**



**Bridge Deck Aft: MOSAIQUE 163' 2002/2020
Proteksan Tri-Deck Motor Yacht**



**Bridge Deck Aft: MOSAIQUE 163' 2002/2020
Proteksan Tri-Deck Motor Yacht**



**Bridge Deck Aft: MOSAIQUE 163' 2002/2020
Proteksan Tri-Deck Motor Yacht**



**Bridge Deck Aft Seating: MOSAIQUE 163'
2002/2020 Proteksan Tri-Deck Motor Yacht**



**Main Deck Aft: MOSAIQUE 163' 2002/2020
Proteksan Tri-Deck Motor Yacht**



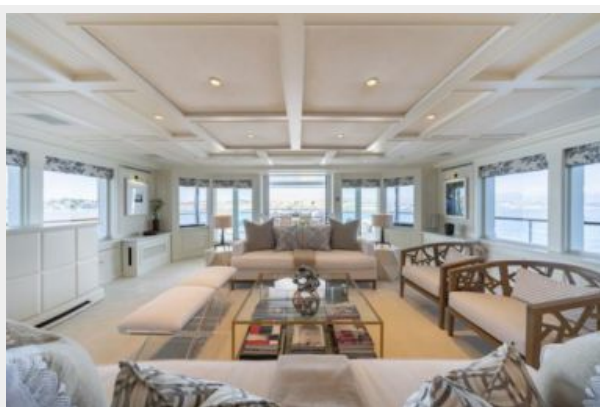
**Main Salon: MOSAIQUE 163' 2002/2020
Proteksan Tri-Deck Motor Yacht**



**Main Salon: MOSAIQUE 163' 2002/2020
Proteksan Tri-Deck Motor Yacht**



**Main Salon: MOSAIQUE 163' 2002/2020
Proteksan Tri-Deck Motor Yacht**



**Main Salon Game Table: MOSAIQUE 163'
2002/2020 Proteksan Tri-Deck Motor Yacht**



**Dining Room: MOSAIQUE 163' 2002/2020
Proteksan Tri-Deck Motor Yacht**



**Dining Room: MOSAIQUE 163' 2002/2020
Proteksan Tri-Deck Motor Yacht**



**Master Private Salon: MOSAIQUE 163'
2002/2020 Proteksan Tri-Deck Motor Yacht**



**Master Stateroom: MOSAIQUE 163'
2002/2020 Proteksan Tri-Deck Motor Yacht**



**Master Suite: MOSAIQUE 163' 2002/2020
Proteksan Tri-Deck Motor Yacht**



**Master Bathroom: MOSAIQUE 163'
2002/2020 Proteksan Tri-Deck Motor Yacht**



VIP: MOSAIQUE 163' 2002/2020 Proteksan Tri-Deck Motor Yacht



VIP Bathroom: MOSAIQUE 163' 2002/2020 Proteksan Tri-Deck Motor Yacht



Guest Stateroom 1 Queen: MOSAIQUE 163' 2002/2020 Proteksan Tri-Deck Motor Yacht



Guest Ensuite 1: MOSAIQUE 163' 2002/2020 Proteksan Tri-Deck Motor Yacht



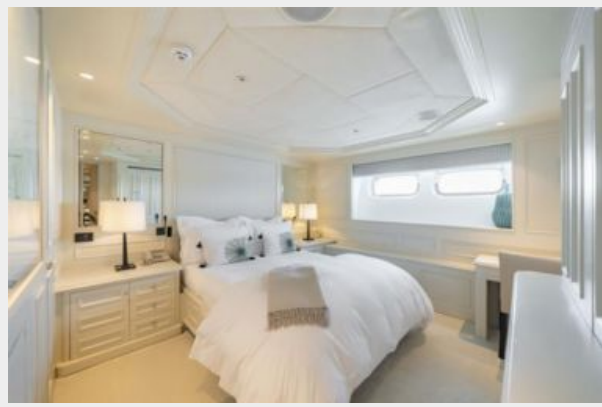
Guest Stateroom 2 Queen: MOSAIQUE 163' 2002/2020 Proteksan Tri-Deck Motor Yacht



Guest Ensuite 2: MOSAIQUE 163' 2002/2020 Proteksan Tri-Deck Motor Yacht



**Guest Stateroom 3: MOSAIQUE 163'
2002/2020 Proteksan Tri-Deck Motor Yacht**



**Guest Ensuite 3: MOSAIQUE 163' 2002/2020
Proteksan Tri-Deck Motor Yacht**



**Guest Stateroom 4 Twin: MOSAIQUE 163'
2002/2020 Proteksan Tri-Deck Motor Yacht**



**Guest Ensuite 4: MOSAIQUE 163' 2002/2020
Proteksan Tri-Deck Motor Yacht**



**Sky Lounge: MOSAIQUE 163' 2002/2020
Proteksan Tri-Deck Motor Yacht**



**Skylounge: MOSAIQUE 163' 2002/2020
Proteksan Tri-Deck Motor Yacht**



**Dining Detail: MOSAIQUE 163' 2002/2020
Proteksan Tri-Deck Motor Yacht**



**Dining Detail: MOSAIQUE 163' 2002/2020
Proteksan Tri-Deck Motor Yacht**



**Dining Detail: MOSAIQUE 163' 2002/2020
Proteksan Tri-Deck Motor Yacht**



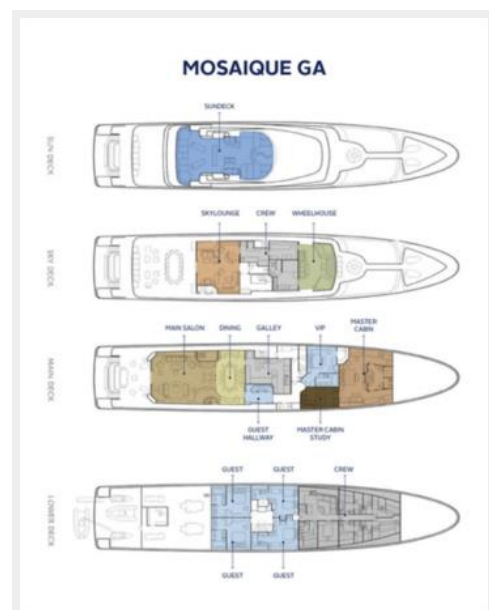
MOSAIQUE 163' 2002/2020 Proteksan Tri-Deck Motor Yacht



MOSAIQUE 163' 2002/2020 Proteksan Tri-Deck Motor Yacht



**Layout GA: MOSAIQUE 163' 2002/2020
Proteksan Tri-Deck Motor Yacht**



CONTACTS

Andrey Shestakov, leading yacht broker of the sales department of Shestakov Yacht Sales Inc. Shestakov Yacht Sales Inc., the official representative of the Miami/Fort Lauderdale FL headquarters.

Contact details

Email: andrey@shestakovyachtsales.com

Web: shestakovyachtsales.com/en/

Telephones

USA: +1(954)274-4435

Office hours

Monday – Saturday: **9:00 - 21:00** EDT

Sunday: **closed**

Address



Harbour Towne Marina, 850 NE 3rd St,
STE 213, Dania, FL 33004