

## MOSAIQUE — PROTEKSAN-TURQUOISE



**Судостроитель:** [Proteksan-Turquoise](#)

**Год постройки:** 2002

**Модель:** Мега-яхта

**Цена:** **ЦЕНА ЯХТЫ ПО ЗАПРОСУ**

**Местонахождение:** France

**Длина общая:** 163' 9" (49.91m)

**Ширина:** 30' 6" (9.30m)

**Мин. осадка:** 9' 7" (2.92m)

**Макс. осадка:** 9' 7" (2.92m)

**Крейс. скорость:** 13 Kts. (15 MPH)

**Макс. скорость:** 15 Kts. (17 MPH)

Купить **MOSAIQUE — Proteksan-Turquoise** а также выбрать подходящую вам яхту из нашего каталога яхт вам поможет опытный яхтенный брокер Андрей Шестаков. На сегодняшний день компания **Shestakov Yacht Sales Inc.** имеет большое количество яхт в собственном списке продаж, а также тесно сотрудничает со всеми крупными яхтенными производителями по всему миру.

Для того чтобы купить яхту **MOSAIQUE — Proteksan-Turquoise** а также проконсультироваться по любому вопросу связанному с покупкой, продажей, чартером яхт позвоните по телефону **+7(918)465-66-44**.

# ОГЛАВЛЕНИЕ

ОГЛАВЛЕНИЕ	2
ХАРАКТЕРИСТИКИ	5
Обзор	5
Основная информация	5
Размеры	5
Скорость, вместимость и масса	6
Размещение	6
Корпус и палуба	6
Информация о двигателе	6
ПОДРОБНОЕ ОПИСАНИЕ	7
MOSAIQUE 163' Proteksan-Turquoise 2002/2020 Tri Deck Motor Yacht	7
SPECS: MOSAIQUE 163' Proteksan-Turquoise 2002/2020 Tri Deck Motor Yacht	8
Исключения	14
Отказ от ответственности	14
ФОТОГРАФИИ	15
Profile: MOSAIQUE 163' 2002/2020 Proteksan Tri-Deck Motor Yacht	15
Aft: MOSAIQUE 163' 2002/2020 Proteksan Tri-Deck Motor Yacht	15
Jacuzzi: MOSAIQUE 163' 2002/2020 Proteksan Tri-Deck Motor Yacht	15
Aerial: MOSAIQUE 163' 2002/2020 Proteksan Tri-Deck Motor Yacht	15
Sun Deck: MOSAIQUE 163' 2002/2020 Proteksan Tri-Deck Motor Yacht	15
Sun Deck: MOSAIQUE 163' 2002/2020 Proteksan Tri-Deck Motor Yacht	15
Sun Deck: MOSAIQUE 163' 2002/2020 Proteksan Tri-Deck Motor Yacht	16
Sun Deck Lounging: MOSAIQUE 163' 2002/2020 Proteksan Tri-Deck Motor Yacht	16
Sun Deck Exercise: MOSAIQUE 163' 2002/2020 Proteksan Tri-Deck Motor Yacht	16
Bridge Deck Aft: MOSAIQUE 163' 2002/2020 Proteksan Tri-Deck Motor Yacht	16
Bridge Deck Aft: MOSAIQUE 163' 2002/2020 Proteksan Tri-Deck Motor Yacht	16
Bridge Deck Aft: MOSAIQUE 163' 2002/2020 Proteksan Tri-Deck Motor Yacht	16
Bridge Deck Aft Seating: MOSAIQUE 163' 2002/2020 Proteksan Tri-Deck Motor Yacht	17

Main Deck Aft: MOSAIQUE 163' 2002/2020 Proteksan Tri-Deck Motor Yacht	17
Main Salon: MOSAIQUE 163' 2002/2020 Proteksan Tri-Deck Motor Yacht	17
Main Salon: MOSAIQUE 163' 2002/2020 Proteksan Tri-Deck Motor Yacht	17
Main Salon: MOSAIQUE 163' 2002/2020 Proteksan Tri-Deck Motor Yacht	17
Main Salon Game Table: MOSAIQUE 163' 2002/2020 Proteksan Tri-Deck Motor Yacht	17
Dining Room: MOSAIQUE 163' 2002/2020 Proteksan Tri-Deck Motor Yacht	18
Dining Room: MOSAIQUE 163' 2002/2020 Proteksan Tri-Deck Motor Yacht	18
Master Private Salon: MOSAIQUE 163' 2002/2020 Proteksan Tri-Deck Motor Yacht	18
Master Stateroom: MOSAIQUE 163' 2002/2020 Proteksan Tri-Deck Motor Yacht	18
Master Suite: MOSAIQUE 163' 2002/2020 Proteksan Tri-Deck Motor Yacht	18
Master Bathroom: MOSAIQUE 163' 2002/2020 Proteksan Tri-Deck Motor Yacht	18
VIP: MOSAIQUE 163' 2002/2020 Proteksan Tri-Deck Motor Yacht	19
VIP Bathroom: MOSAIQUE 163' 2002/2020 Proteksan Tri-Deck Motor Yacht	19
Guest Stateroom 1 Queen: MOSAIQUE 163' 2002/2020 Proteksan Tri-Deck Motor Yacht	19
Guest Ensuite 1: MOSAIQUE 163' 2002/2020 Proteksan Tri-Deck Motor Yacht	19
Guest Stateroom 2 Queen: MOSAIQUE 163' 2002/2020 Proteksan Tri-Deck Motor Yacht	19
Guest Ensuite 2: MOSAIQUE 163' 2002/2020 Proteksan Tri-Deck Motor Yacht	19
Guest Stateroom 3: MOSAIQUE 163' 2002/2020 Proteksan Tri-Deck Motor Yacht	20
Guest Ensuite 3: MOSAIQUE 163' 2002/2020 Proteksan Tri-Deck Motor Yacht	20
Guest Stateroom 4 Twin: MOSAIQUE 163' 2002/2020 Proteksan Tri-Deck Motor Yacht	20
Guest Ensuite 4: MOSAIQUE 163' 2002/2020 Proteksan Tri-Deck Motor Yacht	20
Sky Lounge: MOSAIQUE 163' 2002/2020 Proteksan Tri-Deck Motor Yacht	20
Skylounge: MOSAIQUE 163' 2002/2020 Proteksan Tri-Deck Motor Yacht	20
Dining Detail: MOSAIQUE 163' 2002/2020 Proteksan Tri-Deck Motor Yacht	21
Dining Detail: MOSAIQUE 163' 2002/2020 Proteksan Tri-Deck Motor Yacht	21
Dining Detail: MOSAIQUE 163' 2002/2020 Proteksan Tri-Deck Motor Yacht	21
MOSAIQUE 163' 2002/2020 Proteksan Tri-Deck Motor Yacht	21
Layout GA: MOSAIQUE 163' 2002/2020 Proteksan Tri-Deck Motor Yacht	21
MOSAIQUE 163' 2002/2020 Proteksan Tri-Deck Motor Yacht	21

---

КОНТАКТЫ	23
Контактная информация	23
Телефоны	23
Время работы	23
Адрес	23

# ХАРАКТЕРИСТИКИ

## Обзор

### Key Features:

- Brand New “Blue Marlin” Exterior Paint Job 2020
- Interior Refresh 2020
- 6 Staterooms for up to 12 Guests
- Full Beam Master Suite
- Huge VIP On Main Deck
- Proven Charter Reputation, Buy a Charter Business
- Light, Bright, Airy, Refreshed Interior Design
- Oversized Windows
- Most Amazing Asssitant and Best Business Partner Ever
- Transatlantic
- Caterpillar Engines Recently Rebuilt
- Quantum Zero Speed Stabilizers
- Lloyds Class (renewed 2021)

## Основная информация

**Тип судна:** Мега-яхта

**Модельный год:** 2002

**Год постройки:** 2002

**Год обновления:** 2020

**Вид обновления:** Exterior Paint and Interior Refit

**Страна:** France

## Размеры

**Длина общая:** 163' 9" (49.91m)

**Ширина:** 30' 6" (9.30m)

**Мин. осадка:** 9' 7" (2.92m)

**Макс. осадка:** 9' 7" (2.92m)

## Скорость, вместимость и масса

---

**Крейс. скорость:** 13 Kts. (15 MPH)

**Дальность на крейсерской скорости:**  
4500

**Макс. скорость:** 15 Kts. (17 MPH)

**Чистый вес:** 589 Pounds

**Вместимость воды:** 6118.753068424  
Gallons

**Объем топливного бака:** 22375.3728044  
Gallons

## Размещение

---

**Всего кают:** 6

**Спальные места:** 12

**Всего ком. состава:** 8

**Каюта капитана:** Да

**Койки экипажа:** 6

**Спальных мест экипажа:** 12

## Корпус и палуба

---

**Материал корпуса:** Steel

**Материал палубы:** Teak

**Комплектация корпуса:** Full  
Displacement

**Цвет корпуса:** Blue

**Дизайнер экстерьера:** Dubois Naval  
Architects

**Дизайнер интерьера:** Kristina Ferrand

## Информация о двигателе

---

**Двигатели:** 2

**Производитель:** Caterpillar

---

# ПОДРОБНОЕ ОПИСАНИЕ

---

## MOSAIQUE 163' Proteksan-Turquoise 2002/2020 Tri Deck Motor Yacht

---

MOSAIQUE is a striking motor yacht with pedigree exterior design by world-renowned Dubois Naval Architects. Custom-built by Turkish shipyard Proteksan-Turquoise in 2002 and refit in 2020, she offers transatlantic capability and an abundance of oversized exterior deck space. At 163'9" (49.9m) in length, this immaculately presented yacht is a great charter yacht with proven track record and a strong charter reputation. MOSAIQUE presents a savvy sales opportunity for a commercially-minded owner keen on acquiring a yacht that is charter ready or to privately cruise the world in total comfort.

MOSAIQUE offers an abundance of exterior deck space. Multiple options for lounging and dining provide the feel of a large country house. The yacht features a generous sundeck for al fresco meals paired with an on-deck jacuzzi. Sunpads and loungers stretch the width of the deck, making this areas a sociable hub ideal for entertaining, as well as enjoying privacy at sea.

Clearly defined interior spaces encourage relaxation in an intimate setting. The main salon directly links to a games room, which in turn leads through sliding glass doors to the formal dining room for 12. The main deck areas are gracefully decorated with warm and modern palette set off by mahogany paneling, satinwood banding, and neutral soft furnishings. The upper deck sky lounge offers a charming alternative for guests to relax.

MOSAIQUE boasts six large staterooms on the main deck forward. The full-beam master suite sets the standard for the remaining five staterooms, featuring a king-sized bed, a spacious private study and bathroom lavishly decorated in onyx and marble. Another key feature that sets MOSAIQUE apart is the VIP also located on the main deck and featuring a queen-sized bed and en suite with full-sized bath tub.

The remaining four guest staterooms are located on the lower deck, complemented by a consistent design aesthetic that is evident throughout the yacht. Five of the guest cabins include Jacuzzi bath tubs. A fully integrated audio-visual system supplies all the cabins with a broad selection of entertainment options.

The bridge deck aft benefits from a light and airy interior tone. Outdoors on the aft deck, guests enjoy fine dining around an oval teak dining table that can seat up to 16. The flexible table

design features removable leaves to instantly create a more intimate dining experience, complemented by a Bimini when shade is required.

MOSAIQUE is a full displacement yacht with zero speed stabilizers making her extremely stable and comfortable, even in rough seas. Two Caterpillar 1100hp engines were recently overhauled, and she presents in turnkey condition having been excellently maintained. and fresh hull paint.

#### Key Features:

- Brand New “Blue Marlin” Exterior Paint Job 2020
- Interior Refresh in 2020
- 6 Staterooms for up to 12 Guests
- Full Beam Master Suite
- Huge VIP On Main Deck
- Proven Charter Reputation, Buy a Charter Business
- Light, Bright, Airy, Refreshed Interior Design
- Oversized Windows
- Transatlantic
- Caterpillar Engines Recently Rebuilt
- Quantum Zero Speed Stabilizers
- Lloyds Class (renewed 2021)

## **SPECS: MOSAIQUE 163' Proteksan-Turquoise 2002/2020 Tri Deck Motor Yacht**

---

### **Main Characteristics**

Year Built: 2002

Year Refit: 2020

Builder: Proteksan-Turquoise

Naval Architect: Dubois Naval Architects

Interior Designer: Kristina Ferrand

Hull Construction: Steel

Hull Configuration: Displacement



Length: 49.90m (163' 9")

Beam: 9.30m (30' 6")

Draft: 2.93m (9' 7")

Gross Tons: 589

Accommodation: 12 guests in 6 cabins

Total Crew: 12

Flag: Cayman Islands

Classification: ABS, MCA Compliant, ISM Compliant, Commercial

### **Speeds & Capacities**

Cruising Speed: 12.5 Knots

Maximum Speed: 15 Knots

Range: 4500nm

Fuel Consumption 2 ME+1GE: 180 l/hr at cruising speed, 320l/hr at top speed

### **Machinery and Electrical**

Main Engines: 2 x 1100hp Caterpillar Diesel

Engine Hours (March 2021): Since Major Overhaul: Port 4,859 Stbd 4,864

Fully overhauled: Winter 2015/2016

Generators: 2 x 160 Kw Caterpillar

Generator Hours (March 2021): Since Major Overhaul: Port 10,449 Stbd: 9,656

Fully overhauled: Winter 2015/2016

Gear Boxes: Reintjes WAF 541

Propulsion: 2 x Teignbridge 5 blade propellers

Fuel Separator: Alfa Laval MAB 103B

Electricity: 220V 50hz / 300V 50hz 3phase

Shore Power: 120 / 380V 1&3phase 50/60hz

Converter: Atlas 80Kw

---

Battery Services: 24V

### **Navigational Equipment**

GPS : 1 x Simrad A170 + 1x Furuno GP170

Navtex: Sailor TT-3606E

VHF: 2 x Sailor 6222 VHF DSC

Plotter: Transas

Wind Gauge: B & G Hydra 2000

Echosounder: ELAC LAZ 5100

AIS: Simrad

Chart Display: Transas Navi Sailor 4000 MFD

### **Ancillary Equipment**

Bow Thruster: CRAMM V2 20H

Fire and bilge pumps: 2 x Johnson

Sewage treatment system: Hamann Type 2

WCs: JET 69

Air Conditioning: Condaria WM-RE 120002

Stabilizers: Quantum Zero Speed

### **Tanks & Capacities**

Fuel: 84,700 l

Grey Water: 14,450 l

Black Water: 2,266 l

Fresh Water: 23,162 l

Water Maker: 2 X HEM 900 l/hr

### **Safety and Security**

Life Jackets: SOLAS Inflatable 38 x Adult, 6 x Child

Life rafts: 4 x 25 Person SOLAS A

Immersion Suits: 26 x Adult, 4 x Child

Security System: 5 x CCTV Cameras

Alarms: Servowatch

Electronic Location Aids: 1 x EPIRB, 2 x SART

## Deck Equipment

Anchor Windlass: 2 x Muir VRC 15000

Capstans: 2 x Muir VC 13000

Anchors : x 2

Anchor Chains : x 2

Passerelle : Cramm 5.6m

Swim platform: 612 x 148cm

## Accommodation

### Main Deck

- Master full beam suite (cabin size 3m50 x 6m) with king sized bed (2m x 2m) is located forward on the main deck and boasts a spacious study, a separate seating area, and stunning bathroom with a Jacuzzi tub and steam shower, double vanity unit, lavishly decorated in onyx and marble.
- VIP stateroom (cabin size 3.4m x 4.2m) with large double bed (2m x 1m80) located mid-ship on the main deck with gorgeous ensuite bathroom and double vanity unit.

### Lower Deck

- 2 x double guest cabins (cabin size 3.2m x 4m) both with double beds (2m x 1m80) both with ensuite bathrooms and single vanity units.
- 1 x double guest cabin (cabin size 3m x 4m) with double bed (2m x 1m55) ensuite bathroom with single vanity unit.
- 1 x twin guest cabin (cabin size 3m x 4m) with ensuite shower room and single vanity unit.

## Communications Equipment

- Satcom C
- V-Sat
- Satellite and Cellular telephones
- WiFi

## Audio Visual Equipment

- AV system with HD screens throughout the yacht updated with new releases (2016).
- Full surround sound cinema with pop up screen in the main saloon.
- Plasma or liquid crystal flat screen TV's throughout the yacht - makes and sizes below:
- Main Saloon - flat screen 50"
- Sky Lounge - flat screen LED 55"
- Master cabin - flat screen TV 41"
- All other cabins - flat screen TV 20"
- Sky TV (Mediterranean).
- Audio on demand system available throughout the yacht (inside & outside). Sound server and iPod docking stations in both saloons and all cabins.
- 2012 - improved sound system on boat deck.
- Playstation III
- Sony Wii

## Galley & Laundry

Oven: 2 x Convothem

Microwave: 1 x Microwave Cooking

Dishwasher: 1 x Hobart

Fridge: x 4

Freezer: x 2

Washing Machine: 2 x Miele

Tumble Dryer: 3 x Miele

Ice Maker: x 3

## Water Toys & Tenders (Not guaranteed with sale, showing what the yacht offers for charter)

- Zodiac Hurricane ZH 630 tender with a Volvo 220 z drive inboard diesel engine, seats 8 to 10
- 1 x 2019 jet ski, Sea Doo Spark 2-seater
- 1 x 3 person inflatable sofa
- 1 x 5 person sea wasp (banana) inflatable
- 2 x 1 person inflatable donuts
- 1 x 3 person airstream inflatable
- 3 sets of water skis
- 1 x Mono ski
- 1 x Knee board
- 1 x Surf Wakeboard
  
- Snorkeling equipment
- Fishing gear
- 2 x 2 seater inflatable kayaks.
- 1 x inflatable paddle board
- Gym equipment, recumbent bike, cross trainer

## Refit/Maintenance

2021 (March)

- Special Class Surveys (Lloyds) renewal of all certification

2020

- Painting of the hull topsides
- Full Interior refit including: New Carpets and interior refurbishment and upgrade

2017

- Intermediate Class (Lloyds) Surveys

2014/2015

- Total interior refurbishment with new soft furnishings

2012

- New deckheads with LED lighting
- Improved sound system on Sundeck
- New door handles

- New "Garden Art" Retractable umbrellas on sundeck, recovered 2020
- New Illuminated gold name and logos fitted
- Various mechanical improvement

## Исключения

---

При продаже яхты исключаются личные вещи владельца.

## Отказ от ответственности

---

Компания предоставляет описание судна или яхты добросовестно, но не может гарантировать точность этой информации, а также не ручается за техническое состояние. Покупатель должен проинструктировать своих агентов или оценщиков исследовать представленную информацию более подробно, по собственному желанию. Продажа судна или яхты, изменение цены или снятие с продажи будет происходить без предварительного уведомления.

# ФОТОГРАФИИ

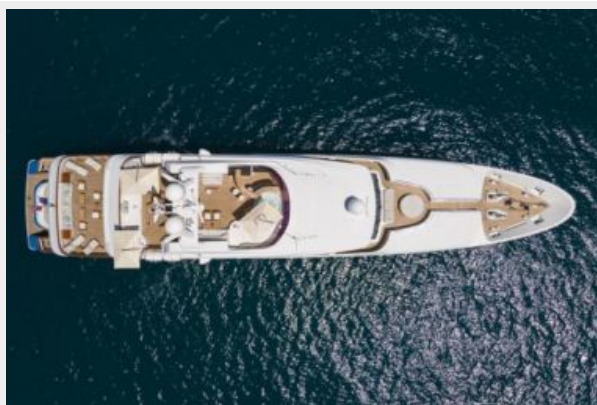
**Profile: MOSAIQUE 163' 2002/2020  
Proteksan Tri-Deck Motor Yacht**



**Aft: MOSAIQUE 163' 2002/2020 Proteksan  
Tri-Deck Motor Yacht**



**Aerial: MOSAIQUE 163' 2002/2020 Proteksan  
Tri-Deck Motor Yacht**



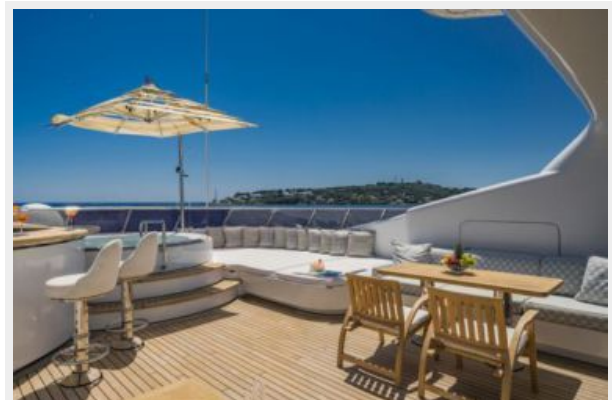
**Jacuzzi: MOSAIQUE 163' 2002/2020  
Proteksan Tri-Deck Motor Yacht**



**Sun Deck: MOSAIQUE 163' 2002/2020  
Proteksan Tri-Deck Motor Yacht**



**Sun Deck: MOSAIQUE 163' 2002/2020  
Proteksan Tri-Deck Motor Yacht**



**Sun Deck: MOSAIQUE 163' 2002/2020  
Proteksan Tri-Deck Motor Yacht**



**Sun Deck Lounging: MOSAIQUE 163'  
2002/2020 Proteksan Tri-Deck Motor Yacht**



**Sun Deck Exercise: MOSAIQUE 163'  
2002/2020 Proteksan Tri-Deck Motor Yacht**



**Bridge Deck Aft: MOSAIQUE 163' 2002/2020  
Proteksan Tri-Deck Motor Yacht**



**Bridge Deck Aft: MOSAIQUE 163' 2002/2020  
Proteksan Tri-Deck Motor Yacht**



**Bridge Deck Aft: MOSAIQUE 163' 2002/2020  
Proteksan Tri-Deck Motor Yacht**





**Bridge Deck Aft Seating: MOSAIQUE 163'  
2002/2020 Proteksan Tri-Deck Motor Yacht**



**Main Deck Aft: MOSAIQUE 163' 2002/2020  
Proteksan Tri-Deck Motor Yacht**



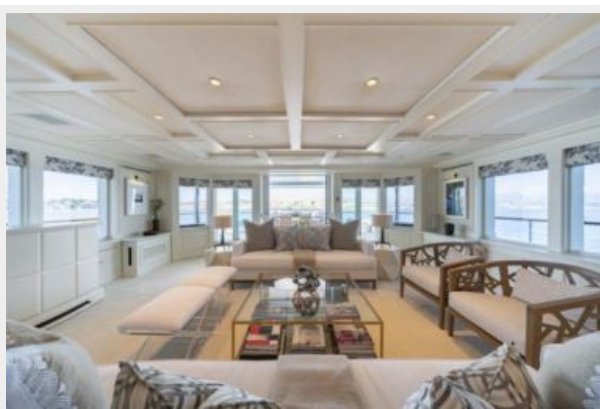
**Main Salon: MOSAIQUE 163' 2002/2020  
Proteksan Tri-Deck Motor Yacht**



**Main Salon: MOSAIQUE 163' 2002/2020  
Proteksan Tri-Deck Motor Yacht**



**Main Salon: MOSAIQUE 163' 2002/2020  
Proteksan Tri-Deck Motor Yacht**



**Main Salon Game Table: MOSAIQUE 163'  
2002/2020 Proteksan Tri-Deck Motor Yacht**



**Dining Room: MOSAIQUE 163' 2002/2020  
Proteksan Tri-Deck Motor Yacht**



**Dining Room: MOSAIQUE 163' 2002/2020  
Proteksan Tri-Deck Motor Yacht**



**Master Private Salon: MOSAIQUE 163'  
2002/2020 Proteksan Tri-Deck Motor Yacht**



**Master Stateroom: MOSAIQUE 163'  
2002/2020 Proteksan Tri-Deck Motor Yacht**



**Master Suite: MOSAIQUE 163' 2002/2020  
Proteksan Tri-Deck Motor Yacht**



**Master Bathroom: MOSAIQUE 163'  
2002/2020 Proteksan Tri-Deck Motor Yacht**





**VIP: MOSAIQUE 163' 2002/2020 Proteksan Tri-Deck Motor Yacht**



**VIP Bathroom: MOSAIQUE 163' 2002/2020 Proteksan Tri-Deck Motor Yacht**



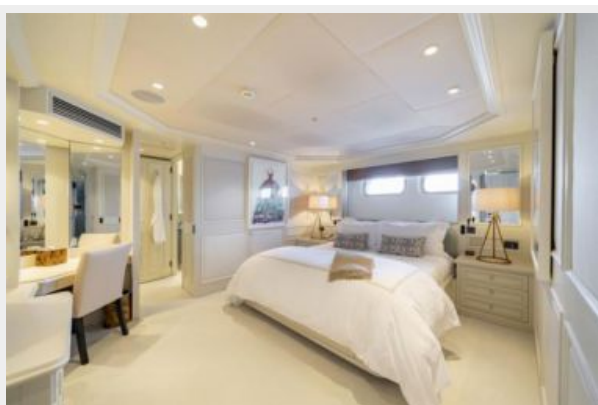
**Guest Stateroom 1 Queen: MOSAIQUE 163' 2002/2020 Proteksan Tri-Deck Motor Yacht**



**Guest Ensuite 1: MOSAIQUE 163' 2002/2020 Proteksan Tri-Deck Motor Yacht**



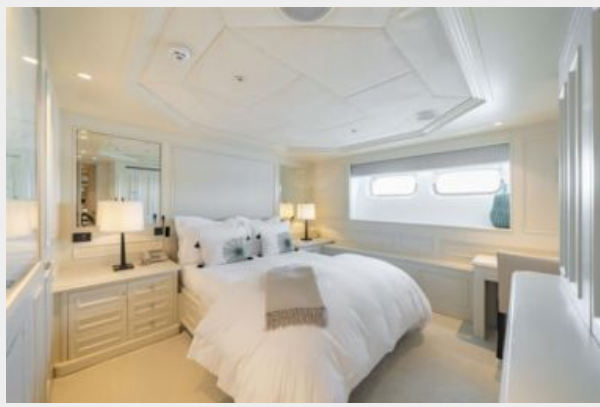
**Guest Stateroom 2 Queen: MOSAIQUE 163' 2002/2020 Proteksan Tri-Deck Motor Yacht**



**Guest Ensuite 2: MOSAIQUE 163' 2002/2020 Proteksan Tri-Deck Motor Yacht**



**Guest Stateroom 3: MOSAIQUE 163'  
2002/2020 Proteksan Tri-Deck Motor Yacht**



**Guest Ensuite 3: MOSAIQUE 163' 2002/2020  
Proteksan Tri-Deck Motor Yacht**



**Guest Stateroom 4 Twin: MOSAIQUE 163'  
2002/2020 Proteksan Tri-Deck Motor Yacht**



**Guest Ensuite 4: MOSAIQUE 163' 2002/2020  
Proteksan Tri-Deck Motor Yacht**



**Sky Lounge: MOSAIQUE 163' 2002/2020  
Proteksan Tri-Deck Motor Yacht**



**Skylounge: MOSAIQUE 163' 2002/2020  
Proteksan Tri-Deck Motor Yacht**





**Dining Detail: MOSAIQUE 163' 2002/2020  
Proteksan Tri-Deck Motor Yacht**



**Dining Detail: MOSAIQUE 163' 2002/2020  
Proteksan Tri-Deck Motor Yacht**



**Dining Detail: MOSAIQUE 163' 2002/2020  
Proteksan Tri-Deck Motor Yacht**



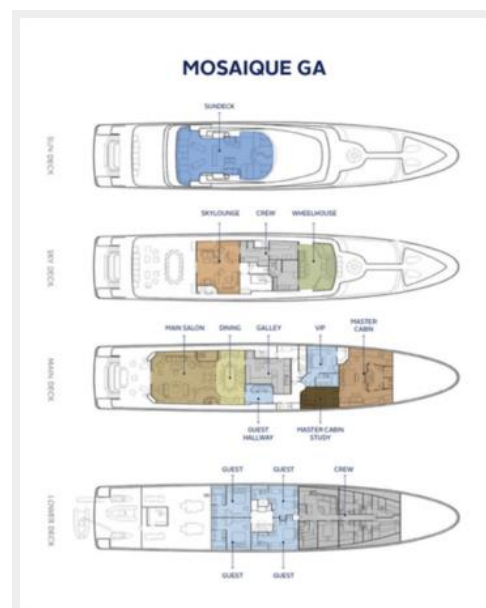
**MOSAIQUE 163' 2002/2020 Proteksan Tri-Deck Motor Yacht**



**MOSAIQUE 163' 2002/2020 Proteksan Tri-Deck Motor Yacht**



**Layout GA: MOSAIQUE 163' 2002/2020  
Proteksan Tri-Deck Motor Yacht**





# КОНТАКТЫ

---

Андрей Шестаков (Andrey Shestakov) – ведущий яхтенный брокер отдела продаж яхт и судов компании Shestakov Yacht Sales Inc. Официальный представитель Shestakov Yacht Sales Inc. для русскоговорящих клиентов в центральном офисе компании в Майами/Форт Лодердейл/Флорида/США.

## Контактная информация

---

Email: [andrey@shestakovyachtsales.com](mailto:andrey@shestakovyachtsales.com)

Web: [shestakovyachtsales.com](http://shestakovyachtsales.com)

## Телефоны

---

Краснодарский край: **+7(918)465-66-44**

США, Майами, Флорида: **+1(954)274-4435**

## Время работы

---

Понедельник – Суббота: **9:00 - 21:00**  
EDT

Воскресенье: **Закрыто**

## Адрес

---



Harbour Towne Marina, 850 NE 3rd St,  
STE 213, Dania, FL 33004