

## PINGUINITO — HARGRAVE



**Builder:** HARGRAVE

**Year Built:** 2014

**Model:** SHELBY

**Price:** PRICE ON APPLICATION

**Location:** United States

**LOA:** 100' 0" (30.48m)

**Beam:** 21' 0" (6.40m)

**Max Draft:** 5' 8" (1.73m)

**Cruise Speed:** 19 Kts. (22 MPH)

**Max Speed:** 22 Kts. (25 MPH)

Our experienced yacht broker, Andrey Shestakov, will help you choose and buy a yacht that best suits your needs **Pinguinito — HARGRAVE** from our catalogue. Presently, at Shestakov Yacht Sales Inc., we have a wide variety of yachts available on our sale's list. We also work in close contact with all the big yacht manufacturers from all over the world.

If you would like to buy a yacht **Pinguinito — HARGRAVE** or would like help answering any questions concerning purchasing, selling or chartering a yacht, please call **+1(954)274-4435**

# TABLE OF CONTENTS

|                              |    |
|------------------------------|----|
| TABLE OF CONTENTS            | 2  |
| SPECIFICATIONS               | 6  |
| Basic Information            | 6  |
| Dimensions                   | 6  |
| Speed, Capacities and Weight | 6  |
| Accommodations               | 6  |
| Hull and Deck Information    | 7  |
| Engine Information           | 7  |
| DETAILED INFORMATION         | 8  |
| Boat Highlights              | 8  |
| VESSEL DETAILS               | 8  |
| Exclusions                   | 17 |
| Disclaimer                   | 17 |
| PHOTOS                       | 19 |
| Pinguinito001                | 19 |
| Pinguinito002                | 19 |
| Pinguinito003                | 19 |
| Pinguinito004                | 19 |
| Pinguinito006                | 19 |
| Pinguinito007                | 19 |
| Pinguinito008                | 20 |
| Pinguinito009                | 20 |
| Pinguinito047                | 20 |
| Pinguinito048                | 20 |
| Pinguinito049                | 20 |
| Pinguinito050                | 20 |
| Pinguinito051                | 21 |
| Pinguinito052                | 21 |

---

|               |    |
|---------------|----|
| Pinguinito053 | 21 |
| Pinguinito038 | 21 |
| Pinguinito039 | 21 |
| Pinguinito054 | 21 |
| Pinguinito055 | 22 |
| Pinguinito056 | 22 |
| Pinguinito037 | 22 |
| Pinguinito071 | 22 |
| Pinguinito072 | 22 |
| Pinguinito024 | 22 |
| Pinguinito025 | 23 |
| Pinguinito026 | 23 |
| Pinguinito027 | 23 |
| Pinguinito028 | 23 |
| Pinguinito029 | 24 |
| Pinguinito030 | 24 |
| Pinguinito032 | 24 |
| Pinguinito031 | 24 |
| Pinguinito034 | 25 |
| Pinguinito033 | 25 |
| Pinguinito036 | 25 |
| Pinguinito035 | 25 |
| Pinguinito043 | 26 |
| Pinguinito044 | 26 |
| Pinguinito045 | 26 |
| Pinguinito046 | 26 |
| Pinguinito057 | 26 |
| Pinguinito058 | 26 |
| Pinguinito068 | 27 |

---

---

|                 |    |
|-----------------|----|
| Pinguinito059   | 27 |
| Pinguinito073   | 27 |
| Pinguinito074   | 27 |
| Pinguinito076   | 28 |
| Pinguinito075   | 28 |
| Pinguinito019   | 28 |
| Pinguinito020   | 28 |
| Pinguinito021   | 28 |
| Pinguinito063   | 28 |
| Pinguinito064   | 29 |
| Pinguinito065   | 29 |
| Pinguinito066   | 29 |
| Pinguinito067   | 29 |
| Pinguinito069   | 29 |
| Pinguinito070   | 29 |
| Pinguinito014   | 30 |
| Pinguinito015   | 30 |
| Pinguinito016   | 30 |
| Pinguinito017   | 30 |
| Pinguinito022   | 30 |
| Pinguinito023   | 30 |
| Pinguinito060   | 31 |
| Pinguinito061   | 31 |
| Pinguinito062   | 31 |
| Pinguinito040   | 31 |
| Pinguinito041   | 31 |
| Pinguinito042   | 31 |
| CONTACTS        | 32 |
| Contact details | 32 |

---

---

|              |    |
|--------------|----|
| Telephones   | 32 |
| Office hours | 32 |
| Address      | 32 |

---

# SPECIFICATIONS

---

## Basic Information

---

**Category:** SHELBY

**Sub Category:** Raised Pilothouse

**Model Year:** 2014

**Year Built:** 2014

**Country:** United States

**Fly Bridge:** Yes

## Dimensions

---

**LOA:** 100' 0" (30.48m)

**Beam:** 21' 0" (6.40m)

**Max Draft:** 5' 8" (1.73m)

## Speed, Capacities and Weight

---

**Cruise Speed:** 19 Kts. (22 MPH)

**Max Speed:** 22 Kts. (25 MPH)

**Water Capacity:** 600 Gallons

**Holding Tank:** 150 Gallons

**Fuel Capacity:** 3200 Gallons

## Accommodations

---

**Total Cabins:** 4

**Sleeps:** 8

**Total Heads:** 5

**Crew Sleeps:** 4

**Crew Heads:** 2

---

## Hull and Deck Information

---

**Hull Material:** Fiberglass

**Hull Configuration:** Semi-Displacement

**Hull Color:** White

**Hull Designer:** JB Hargrave

**Interior Designer:** Interiors by Shelly

---

## Engine Information

---

**Engines:** 2

**Manufacturer:** CAT

**Model:** C-32 Acert

**Engine Type:** Inboard

**Fuel Type:** Diesel

---

# DETAILED INFORMATION

---

## Boat Highlights

---

“Pinguinito” is a shining example of the popular 100’ Raised Pilothouse from Hargrave. For the size of vessel, the volume onboard this yacht cannot be beaten. Entering through the aft deck doors into the salon, you will clearly feel this difference, as the space is full-beam, with over 7’ of headroom. The raised pilothouse design also makes room for a massive open country kitchen style galley.

The interior of the yacht was designed by Interiors by Shelly, and exudes a fresh elegance and style. Woodwork throughout is a blond European Cherry wood with accents of Pommele Sapele. Textiles are in shades of greys and silver with pops of black and mineral blues. Custom designs are seen throughout the marble floors and ceilings, giving this yacht a unique and upscale feel.

The flybridge on Pinguinito is the premier gathering place on the yacht, featuring space for 24 comfortably, a wet bar with sink, ice maker, and refrigerator, and a jacuzzi tub with a bar with seating for 3 surrounding it. The flybridge also offers sun-worshippers an area to the aft to lounge and a cooking area. No space onboard Pinguinito disappoints.

## VESSEL DETAILS

---

### Aft Deck:

- Curved Solid Teak table with inlay
- Custom dining chairs made by Medallion Furniture of Miami
- Teak Diagonal floor
- TV ceiling Mount
- Port entertainment/serving area
- Ice Maker
- ULINE Stainless Steel refrigerator
- TV with ceiling flush mount lift
- Half Spiral Staircase to Fly Bridge



- Starboard Crew Entry

#### Main Salon & Dining:

Stepping from the aft deck into the salon, you are greeted by a comfortable and stylish space. One of the first things you will notice about the interior of Pinguinito, is that you feel you're on a much larger yacht. This is due to the full-beam salon and dining area with over 7' of headroom above. Elegant decor and contrasting European Cherry Wood and Pommel Sapele give the space a warm, upscale feel.

- Gloss European Cherry Wood w/Pommel Sapele cabinetry
- Custom designed salon furniture with seating for 10 including a couch, coffee table, marble top cocktail table, and 3 chairs to port
- Starboard two additional chairs and glass top side table
- Walk up aft Bar with Marble top and sink and Icemaker
- 55" Samsung LED TV and entertainment center
- Fresh and elegant contemporary décor with tones of gray taupe and crisp silvers, with accents in black and mineral blue.
- Carpet /Fabrica-Patina Nouveau-color Wind Song (installed railroded)
- Custom ceiling Design with 86" height
- Huge windows that allow great visibility and light.

#### Dining:

Forward of the salon is the dining area. With seating for up to eight persons around a gorgeous cherry wood dining table, the space becomes a perfect setting for formal dining. The dining area also includes ample storage space and two wine coolers.

- Gloss European Cherry Wood w/Pommel Sapele cabinetry
- Curved rectangular cherry wood dining table with seating for 8
- Custom dining chairs upholstered in silk
- Port and starboard consoles
- Forward marble top console housing 2 wine coolers
- Forward wall is Majilte suede with Congo embossing.
- Two vertical mirrors with sconces

---

### Day head:

- Sonobath black granite slab style sink
- Graff-Luna 36" faucet Chrome/wall mount
- Pearlato Suevo Marble, black granite and Stainless floor
- Mirror ceiling
- Quartz-Forbidden White -PJ

### Galley:

Continuing forward on the main deck, you will enter the country kitchen style galley. This space is well equipped with full size appliances and finished in striking clean whites and blond Cherry wood. Storage in this space is ample including two pull-out pantries.

- White Silestone countertops
- Mosaic glass tile behind cooktop
- Solid teak flooring
- 2 - sub zero pull out refrigerator drawers with custom blond Cherry wood fronts
- Stainless steel GE Profile Refrigerator
- GE Profile Dishwasher
- GE Profile 4 burner cook-top
- GE Profile full size oven
- GE Profile Microwave oven
- GE Profile Trash compactor
- Franke Stainless Steel Sink
- 26" Samsung TV
- Forward settee with seating for 6 around a Pommele Sapele inlay table.

### Foyer:

Following the stairs down from the port side of the dining area, you will enter the main accommodations area onboard Pinguinito. Three of the four staterooms are located in this area.

- Washer/Dryer Pantry

- Marble and Granite Inlay
- Mirrored ceiling with design
- Curved staircase with art above

#### Master Stateroom:

The master stateroom is located aft, and is a full beam stateroom flooding with light from six portholes. The space is decorated in silvers and light greys with blond cherry and pommele Sapele wood tones.

- King size bed
- 2 hanging nightstands
- 2 large walk in closets
- 2 7' dressers
- Dual window treatments - one sheer, one blackout
- 40" Samsung LED TV

#### Master Head:

- His-and-her style head with a glass shower in the center
- Marble countertops and shower wall
- Starboard head has a built in vanity
- Port head has a linen storage area

#### VIP Stateroom:

The VIP Stateroom is accessed by the forward leading stairway from the galley.

- King size bed
- Upholstered headboard
- Blond Cherry and Pommele Sapele woodwork
- Entertainment cabinet
- 26" Samsung LED TV
- 2 large hanging lockers

- Additional under-bed storage

#### VIP Head:

- Stand up shower
- Marble countertops
- Ample storage

#### Port & Starboard Guest Staterooms:

The additional two guest rooms forward of the master are mirror images of each other and have a striking upholstery and nailhead design; both on the bed frame and the headboard wall. Both have huge nightstand/dressers and full AV systems. Above the nightstands are Fine Art/Quadralli Sconces that have dual shades. One is a translucent silver and under that is an opaque white.

- Unique Headboard and bed base nail head design
- Queen Berth
- Drawers under bed
- Fine Art Sconces
- Dual Window treatments
- Samsung 32" LED TV
- En-suite heads with stand-up showers

#### Flybridge:

The Flybridge can easily accommodate 24 in comfort. There are (2) large L-shaped settees and a full service bar to port with (4) bar stools. There are also (2) small cocktail tables and a large dining table in the flybridge. All (3) have the signature curved diamond inlays. The exterior fabrics were selected to complement the rest of the yacht and are in soft tones of crisp light platinum and pale mineral blue.

- 2 Forward Facing Capt./Guest benches
- 2 Large L shaped settees
- Full service bar with 4 bar stools.
- 2 small cocktail tables
- 1 large dining table
- Grilling Station and Subzero drawers

- Jacuzzi Tub
- Teak bar with 3 stools surrounding jacuzzi tub
- Sun pad - under cover
- Lounge chairs aft
- GE S/S Ice Maker at Aft DeckStd.
- GE S/S Ice Maker for Wet Bar in Flybridge
- (2) EDGESTAR Freezers on Flybridge
- ULINE Stainless Steel refrigerator

#### Crew Quarters:

#### Crew Lounge:

- 8' Settee and flat screen TV
- Under counter refrigerator
- Sink
- Microwave
- Front load washer and dryer
- Large countertop for folding

#### Captain's Cabin:

- Queen bed
- Storage below bed
- Additional above-bed storage
- Desk
- Bookshelf
- Hanging locker

- Private bath

#### Crew Cabin

- 2 twin bunks
- Charging station
- Hanging locker
- Private bath

#### Engine/Mechanical Equipment:

- Sea Chest
- White perforated insulation panels in Engine Room
- 100 AMP Galvanic Isolator x2
- Rule 3700 Bilge Pump x (7)
- (3) Freeman Hatches
- Cruise Air chilled water 4 (3) ton units throughout the boat
- (2) 34 kW 60Hz single phase Phasor generators including gauges and hard panel sound shield
- Watertight bulkheads in engine room
- S.S. Watertight Engine Room door
- Naiad Stabilizers Model 302 w/ 9.0sq.ft. fins & Datum controller
- Double stabilizer & bow thruster backup pump on back of port & stb engine
- Oberdorfer fuel transfer pump 990RHN76
- Reverso gear pump GP-706-24C Oil Change Pump for engine, gear box & genset
- Security main switch on a/c power
- Double Racor filters for engines
- Glendinning 100 amp cable master w/125' cord at transom x2
- Glendinning Controls w/ 1 remote
- Sea-fire Smoke and Temp alarms (10 units)

- Jabsco emergency crash clutch pump 18330-0000 with 4 pick up
- (2) Water Heaters 30 Gallons
- Sentry Battery Chargers-1x80Amp 24V-1x30Amp 24V-1x30Amp 12V
- Engine Room Filters and Fan System
- Tide Seal Dripless shaft logs
- Fill-Rite 901-1.5" Flow Meter
- Water Drop Exhaust to generators
- Sea-Fire automatic fire extinguisher system FM200
- Safety rails around twin engines
- Headhunter TW-200 waste treatment system
- Electric opening Transom Door
- Marquipt sea stairs – 8 step
- 10 Man Life Raft
- Quicklift 2000lb Davit w/Rotation
- Sea Recovery PW 1400 gal/day Watermaker

#### Appliances:

- GE White Washer and Dryer x2
- U-LINE S/S Fridge in Crew Quarters, Aft Deck and Flybridge
- GE White Microwave in Crew Quarters
- GE Profile S/S Fridge in Galley
- Sub-Zero w/o Cherry Panel Fridge in Galley
- GE Profile Black Cooktop with Profile S/S Oven in Galley
- GE Profile S/S Microwave in Galley
- GE Black Disposal in Galley
- VIGO Chrome Faucet in Galley
- GE Profile S/S Trash Compactor in Galley

- GE Black Ice Maker in Galley and Main Salon
- (2) U-LINE Black Wine Coolers in Main Salon
- GE S/S Ice Maker at Aft DeckStd.
- GE S/S Ice Maker for Wet Bar in Flybridge
- (2) EDGESTAR Freezers on Flybridge

#### Navigation & Electronics:

- Furuno NAV3D black box processor @Pilot House
- Furuno NAV 3D 12KW, 6' Array 72n.m.mounted @ hard top
- Furuno RD33 NMEA Repeater Color nmea repeater display @ upper and lower helm
- Furuno NAV 3D HUB101 Interswitch 3d
- Furuno Navpilot 700 @ lower helm
- Furuno Navpilot 700 3.6" 2nd Station 2nd station control 3.6" screen @upperhelm
- Masters M17-4IP/Dlcd monitor 17" @ Pilot House
- Furuno NAV3D 12" MFD Display 12.1" color display, Mounted @ upper helm
- Furuno FM 4000 Remote MIC 2nd station mic mounted @ upper and lower helm
- Newmar Hailer Horn 60/40 40 watt, 60 peak mounted @ hard top
- Concord Dome Camera,day/night mounted @ flybridge side
- Furuno GP 33 WAAS Color GPS 4.3" lcd
- ACR RCL 100D 24VDC Spotlight Mounted @ Pilot House
- Nobeltec Trident. Trident time zero, NOAA and vector charts
- KVH FB150 SAT Phone Inmarsat fleet 150 sat phone
- Concord Wireless N Access Router n protocol wifi router
- Panasonic PH T-7731-B Spkr Phone black, 24 button 1 line

#### A/V Equipment:



- KVH2011 Tracvision HD7 USA
- Tracvision M7 Empty Dome mounted @ mast
- WP controller & gateway RTI U2 Waterproof System mounted @ aft deck
- 46" led 1080p Samsung mounted @ aft deck
- Motorized 46" fold up tv lift mounted @ aft deck
- 55" led 1080p Samsung mounted @ salon
- 26" led Samsung mounted @ fwd vip
- Samsung 32" 1080p led-lcd hdtv Mounted @ port and starboard guest
- Samsung 40"led 1080p mounted @ master
- Sonance IPOD Dock and ir remote mounted @ master
- Samsung Item blu ray player 3d wifi mounted @ master
- Denon 7.2ch av receiver mounted @ master
- Universal controller mounted @ master
- Toshiba 19 inch LCD TV/DVD with tuner, speakers, and dvd mounted @ captain's cabin
- 9.5" overhead monitor dvd combo tv tuner Mounted @ crew aft
- Samsung led 4003 series mounted @ crew galley

Tender/Toys included:

- TENDER: 2014 17' AB Inflatable w/ 90HP Yamaha
- Jetski: 2018 Yamaha

## Exclusions

---

Owner's personal belongings.

## Disclaimer

---

The Company offers the details of this vessel or yacht in good faith but cannot guarantee or warrant the accuracy of this information nor warrant the condition of the vessel. A buyer should instruct his representatives, agents, or his surveyors, to investigate such details as the buyer

desires validated. This vessel or yacht is offered subject to prior sale, price change, or withdrawal without notice.

# PHOTOS

**Pinguinito001**



**Pinguinito002**



**Pinguinito003**



**Pinguinito004**



**Pinguinito006**



**Pinguinito007**



**Pinguinito008**



**Pinguinito009**



**Pinguinito047**



**Pinguinito048**



**Pinguinito049**



**Pinguinito050**



**Pinguinito051**



**Pinguinito052**



**Pinguinito053**



**Pinguinito038**



**Pinguinito039**



**Pinguinito054**



**Pinguinito055**



**Pinguinito056**



**Pinguinito037**



**Pinguinito071**



**Pinguinito072**



**Pinguinito024**



**Pinguinito025**



**Pinguinito026**



**Pinguinito027**



**Pinguinito028**



**Pinguinito029**



**Pinguinito030**



**Pinguinito032**



**Pinguinito031**





**Pinguinito033**



**Pinguinito034**



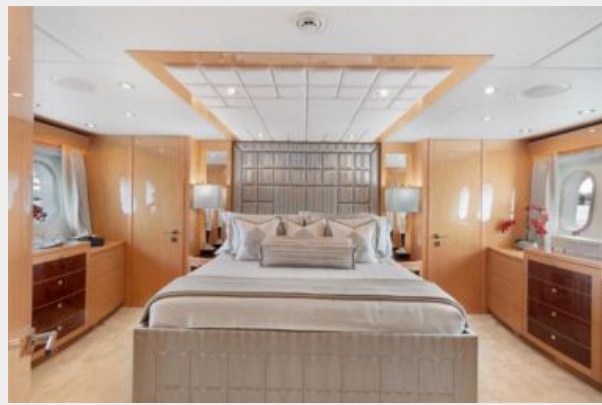
**Pinguinito035**



**Pinguinito036**



**Pinguinito043**



**Pinguinito044**



**Pinguinito045**



**Pinguinito046**



**Pinguinito057**



**Pinguinito058**



**Pinguinito059**



**Pinguinito068**



**Pinguinito073**



**Pinguinito074**



**Pinguinito075**



**Pinguinito076**



**Pinguinito019**



**Pinguinito020**



**Pinguinito021**



**Pinguinito063**



**Pinguinito064**



**Pinguinito065**



**Pinguinito066**



**Pinguinito067**



**Pinguinito069**



**Pinguinito070**



**Pinguinito014**



**Pinguinito015**



**Pinguinito016**



**Pinguinito017**



**Pinguinito022**



**Pinguinito023**



**Pinguinito060**



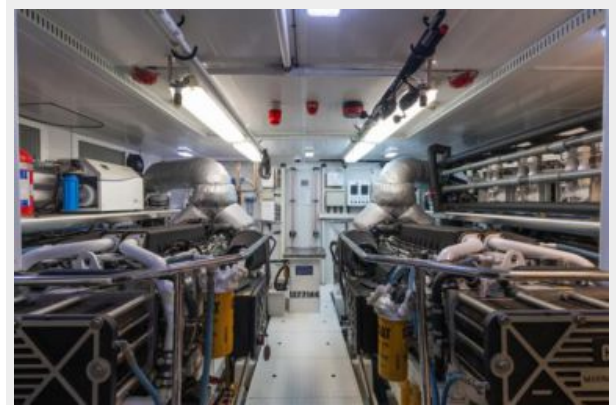
**Pinguinito061**



**Pinguinito062**



**Pinguinito040**



**Pinguinito041**



**Pinguinito042**



# CONTACTS

---

Andrey Shestakov, leading yacht broker of the sales department of Shestakov Yacht Sales Inc. Shestakov Yacht Sales Inc., the official representative of the Miami/Fort Lauderdale FL headquarters.

## Contact details

---

Email: [andrey@shestakovyachtsales.com](mailto:andrey@shestakovyachtsales.com)

Web: [shestakovyachtsales.com/en/](http://shestakovyachtsales.com/en/)

## Telephones

---

USA: +1(954)274-4435

## Office hours

---

Monday – Saturday: **9:00 - 21:00** EDT

Sunday: **closed**

## Address

---



Harbour Towne Marina, 850 NE 3rd St,  
STE 213, Dania, FL 33004