

## HOOK EM II — BUDDY DAVIS



**Builder:** BUDDY DAVIS

**Year Built:** 2006

**Model:** Sport Fisherman

**Price:** PRICE ON APPLICATION

**Location:** United States

**LOA:** 48' 0" (14.63m)

**Beam:** 16' 0" (4.88m)

**Max Draft:** 5' 0" (1.52m)

**Cruise Speed:** 30 Kts. (35 MPH)

**Max Speed:** 40 Kts. (46 MPH)

Our experienced yacht broker, Andrey Shestakov, will help you choose and buy a yacht that best suits your needs **Hook Em II — BUDDY DAVIS** from our catalogue. Presently, at Shestakov Yacht Sales Inc., we have a wide variety of yachts available on our sale's list. We also work in close contact with all the big yacht manufacturers from all over the world.

If you would like to buy a yacht **Hook Em II — BUDDY DAVIS** or would like help answering any questions concerning purchasing, selling or chartering a yacht, please call **+1(954)274-4435**

# TABLE OF CONTENTS

TABLE OF CONTENTS	2
SPECIFICATIONS	4
Overview	4
Basic Information	4
Dimensions	4
Speed, Capacities and Weight	4
Accommodations	5
Hull and Deck Information	5
Engine Information	5
DETAILED INFORMATION	6
Description	6
Description	6
Exclusions	8
Disclaimer	8
PHOTOS	9
vlcsnap-2020-11-28-10h52m22s349	9
DLP00607	9
DLP00478	9
DLP00487	9
DLP00424	9
DLP00517	9
DLP00526	10
DLP00529	10
DLP00538	10
DLP00541	10
DLP00544	10
DLP00547	10
DLP00550	11

DLP00562	11
DLP00574	11
DLP00598	11
IMG_2110_HEIC	11
DLP00604	11
CONTACTS	12
Contact details	12
Telephones	12
Office hours	12
Address	12

# SPECIFICATIONS

## Overview

Davis's attention to detail goes beyond where the eye can see, and that ensures that the 48 Express is at the forefront of high tech, yet utilizes proven boat-building techniques. This 20-ton vessel features a solid glass bottom, Divinycell-cored hull sides, Nidacore decks and bulkheads, and a hull-to-deck joint that is screwed, epoxied and fiberglassed to withstand anything the ocean can throw at her. Also impressive is the fact that with tunnels, the 48 maintains the same seakeeping characteristics that has made Davis famous among sportfishermen. So while other builders continue to build boats using the same decades-old hull design, Davis continues to ensure that each Davis is better than the last.

## Basic Information

Category: Sport Fisherman	Model Year: 2006
Year Built: 2006	Country: United States
Vessel Top: Half Tower	

## Dimensions

LOA: 48' 0" (14.63m)	Beam: 16' 0" (4.88m)
Max Draft: 5' 0" (1.52m)	

## Speed, Capacities and Weight

Cruise Speed: 30 Kts. (35 MPH)	Max Speed: 40 Kts. (46 MPH)
Gross Tonnage: 30 Pounds	Water Capacity: 140 Gallons
Holding Tank: 50 Gallons	Fuel Capacity: 840 Gallons

---

## Accommodations

---

**Total Cabins:** 1

**Sleeps:** 2

**Total Heads:** 1

---

## Hull and Deck Information

---

**Hull Material:** Fiberglass

---

## Engine Information

---

**Engines:** 2

**Manufacturer:** Caterpillar

**Model:** C-18

**Engine Type:** Inboard

**Fuel Type:** Diesel

# DETAILED INFORMATION

## Description

Take the helm of the 48 Express, and we will show you it can do what no other sportfishing boat can do. Punching through 6-foot head seas at 30 knots, its beautifully flared bow throws off every drop of water before it gets to the windshield. Try that on one of our competitor's boats, and you'll be under a waterfall. The power steering makes it easy to change direction, sprinting forward or backing down. And when you have to head out to sea, you'll know you'll get there with plenty of time to put your lines in, even when conditions make our competitor's boats head for cover, thanks to a 30-knot cruising speed. Everything starts with the bottom hull shape. All other things—the tumblehome, the flare—are all derivative of the bottom, and it's very effective. Designed in collaboration with noted naval architect Donald L. Blount, the Buddy Davis 48 Express is a masterpiece in seakeeping performance. Run her hard. She doesn't pound. She won't shake, rattle, roll or leave you wet. Down swell, she behaves and goes where you want, never steering by the bow. You experience the superb ride, you'll want to take a closer look at the many quality and innovative details that make her a true fishing or cruising machine. First the helm is elevated for an ideal line of sight. In fact, the Buddy Davis 48 offers the best visibility from the helm of any of the competition—bar none! Yet it's close to all the action, making it the perfect cockpit. Four anglers and a mate have plenty of space to maneuver. And for those who fish up forward or need to drop the anchor, there's plenty of non-skid on her massive foredeck. Access to the massive, clutter-free engine room is through the bridgedeck stairs fitted with substantial gas struts as standard equipment. Thanks to the elevated helm, there's stand-up headroom and all systems are easily serviced. With six feet of headroom, maintenance is a pleasure. The Buddy Davis 48 offers more headroom than any other size boat in her class.

## Description

### COAST GUARD AND SAFETY EQUIPMENT

25-Adult Type II PFD1-Horn1-Bell1-Remote control spot light4-Size II/1-Size BI

Type B:C fire ext. mounted/charged

1-First Aid kit1-Type IV throwing device

1-MARPOL sticker

1-FE 241 Clean Agent automatic fire suppression system in the engine space.

2-406 MHz EPIRB (both registered to vessel) rigged for rapid deployment

2-High water alarms1-CO /smoke detect

1-Current 12-gauge flare kit

## GROUND TACKLE

1-Lewmar 24 VDC windlass 1-150'X7/16" SS chain lead 1-Anchor roller1-35 # Delta Fast Set anchor 1-Custom anchor pulpit

## INVENTORY

3-Cable boxes1-SAT TV1-DVR with surround sound1-4-camera FLIR security system2-Flatscreen TV1-Close circuit TV system2-Marine battery chargers1-Charles ISO inverter charger1-50-amp shore power cable/reel1-Galley Maid reverse osmosis plant/20 GPH reported 1-Hot water heater4-Marine AC units2-Refrigerator/1-bait freezer1-Clarion stereo system with bows and JL audio speakers 1-Tank Sentry system1-Deck freezer1-Microwave2-Teaser reels2-High end helm chairs1-Chilled water mister1-Air compressor1-Wind screen wiper/washer1-UW lights

1-2-burner electric stove1-SAT phone1-Garmin GPS1-New Samsung flat screen TV2-Furuno Nav-Net C-Map map GPS/depth/radar/data

1-ICOM M 604 VHF radio RAM1-Furuno RD 30 GPS1-Engine synchronizer1-Simrad AP 25 autopilot1-Sea King security system/vessel locator1-Sail Comp digital compass1-Set double spur outriggers1-Aft deck cover2-SeaTel antennae controls

Westerbeke 20 KW generator with 3400 hours

2021 new teak decks in cockpit

2021 New Furuno electronics

2021 New teak covering boards

2021 New teak facia on transom

---

## Exclusions

---

Owner's personal belongings.

---

## Disclaimer

---

The Company offers the details of this vessel or yacht in good faith but cannot guarantee or warrant the accuracy of this information nor warrant the condition of the vessel. A buyer should instruct his representatives, agents, or his surveyors, to investigate such details as the buyer desires validated. This vessel or yacht is offered subject to prior sale, price change, or withdrawal without notice.



# PHOTOS

vlcsnap-2020-11-28-10h52m22s349



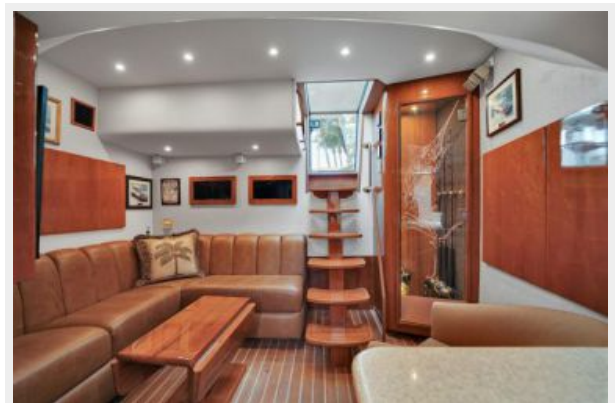
DLP00607



DLP00478



DLP00487



DLP00424



DLP00517



**DLP00526**



**DLP00529**



**DLP00538**



**DLP00541**



**DLP00544**



**DLP00547**





**DLP00550**



**DLP00562**



**DLP00574**



**DLP00598**



**DLP00604**



**IMG\_2110\_HEIC**



# CONTACTS

---

Andrey Shestakov, leading yacht broker of the sales department of Shestakov Yacht Sales Inc. Shestakov Yacht Sales Inc., the official representative of the Miami/Fort Lauderdale FL headquarters.

## Contact details

---

Email: **andrey@shestakovyachtsales.com**

Web: [shestakovyachtsales.com/en/](http://shestakovyachtsales.com/en/)

## Telephones

---

USA: **+1(954)274-4435**

## Office hours

---

Monday – Saturday: **9:00 - 21:00 EDT**

Sunday: **closed**

## Address

---



Harbour Towne Marina, 850 NE 3rd St,  
STE 213, Dania, FL 33004