

## AQUABELLA — BENETTI



**Builder:** BENETTI

**Year Built:** 2002

**Model:** Motor Yacht

**Price:** PRICE ON APPLICATION

**Location:** Italy

**LOA:** 114' 7" (34.90m)

**Max Draft:** 6' 3" (1.90m)

**Cruise Speed:** 17 Kts. (20 MPH)

**Max Speed:** 14 Kts. (16 MPH)

Our experienced yacht broker, Andrey Shestakov, will help you choose and buy a yacht that best suits your needs **AQUABELLA — BENETTI** from our catalogue. Presently, at Shestakov Yacht Sales Inc., we have a wide variety of yachts available on our sale's list. We also work in close contact with all the big yacht manufacturers from all over the world.

If you would like to buy a yacht **AQUABELLA — BENETTI** or would like help answering any questions concerning purchasing, selling or chartering a yacht, please call **+1(954)274-4435**

# TABLE OF CONTENTS

TABLE OF CONTENTS	2
SPECIFICATIONS	4
Overview	4
Basic Information	4
Dimensions	4
Speed, Capacities and Weight	4
Accommodations	4
Hull and Deck Information	5
Engine Information	5
DETAILED INFORMATION	6
ACCOMODATION	6
INSTRUMENTATION	6
EQUIPMENT	6
REFIT 2019 - 2020	6
Exclusions	8
Disclaimer	8
PHOTOS	9
FLY_DECK	9
PROFILE	9
FLY_DECK_	9
FLY_DECK_DINING_AREA	9
SUN_BATHING_AREA	9
SUN_DECK_JACUZZI AREA	9
STAIRS TO SUN DECK	10
MAIN_DECK_DINING_AREA	10
MAIN_DECK_SALOON _	10
MAIN_DECK_SALOON	10
MAIN_DECK_FORMAL DINING_AREA	10

---

FLY_DECK_SALOON	10
WHEELHOUSE	11
WHEELHOUSE	11
STAIRS TO MAIN DECK	11
MASTER CABIN	11
MASTER BATHROOM	11
MASTER CABIN	11
VIP BATHROOM	12
VIP CABIN	12
BATHROOM	12
TWIN CABIN	12
CONTACTS	13
Contact details	13
Telephones	13
Office hours	13
Address	13

---

# SPECIFICATIONS

---

## Overview

---

The Classic 115' motor yacht was built by Benetti in Italy at their Fano shipyard , she was delivered to her owner in 2002. The yacht's interior has been designed by Zuretti. The interior configuration has been designed to comfortably accommodate up to 10 guests overnight in 5 cabins. She is also capable of carrying up to 6 crew onboard to ensure a relaxed luxury yacht experience.

## Basic Information

---

**Category:** Motor Yacht

**Sub Category:** Flybridge

**Model Year:** 2002

**Year Built:** 2002

**Refit Year:** 2020

**Country:** Italy

## Dimensions

---

**LOA:** 114' 7" (34.90m)

**LOD:** 96' 6" (29.40m)

**Max Draft:** 6' 3" (1.90m)

**MFG Length:** 25' 0" (7.62m)

## Speed, Capacities and Weight

---

**Cruise Speed:** 17 Kts. (20 MPH)

**Max Speed:** 14 Kts. (16 MPH)

**Displacement:** 544541.78714 Pounds

**Water Capacity:** 1585.032312 Gallons

**Fuel Capacity:** 9246.02182 Gallons

## Accommodations

---

**Total Cabins:** 5

---

## Hull and Deck Information

---

**Hull Material:** Carbon Fiber

**Deck Material:** Teak

---

## Engine Information

---

**Engines:** 2

**Manufacturer:** MTU

**Model:** 12V 2000 M90

## DETAILED INFORMATION

---

### ACCOMODATION

---

5 CABINS.

### INSTRUMENTATION

---

- MAGNETIC COMPASS: C-PLATH 4863 - 1000- GYRO COMPASS: C-PLATH NAVIGAT x MKI- LOG: B + G- DEPTH SOUNDER: FORUNO LS- 6100- AUTOPILOT: C-PLATH NAVIPILOT- RADAR: S BAND- ELECTRONIC CHART SYSTEM: TRANSAS - LATEST WORLD CHARTS- GPS: FORUNO D9PS - GP 36 x 2- INSTRUMENTATION SYSTEM: B + 9- NAVTEX: NX 700- INTERNET: LOCAL ONLY PHON CHIP- SSB RADIO: SKANTI TRP - 1150- VHF: 2 x ICOM IC - M 502- TELEPHONE EXCHANGE: KVH - TRACPHONE F77

### EQUIPMENT

---

- GEARBOX: ZF- BOW THRUSTER: VOAC- WATHER MAKER: 2 X VILLAGE MARINE- STABILIZERS: NAIAD- FUEL SEPARATOR: RACOR 1000 MA- AIR CONDITIONING: MARINE AIR SYSTEM AIR 240 BTU- WASTE WATER TREATMENT: HAMANN- TOILET SYSTEM: JETS- BOILERS: 2 X 50 GAL- LUBRICATION OIL: 400 LTS- DIRTY LUB OIL: 400 LTS- GREY WATER - BLACK WATER: COMBINED- TV/DVD- SATELLITE: DIRECT TV- MUSIC SYSTEM: BASIC - BOSE ACOUSTAMAS CUBIC- REFRIGERATOR: GALLEY x 3- FREEZER: GALLEY- OVEN: MIELE- STOVE: MIELE x 5 BURNER- MICROWAVE- ICEMAKER: 3- DUMB-WAITER- DISH WASHER: BOSH- WASHING MACHINE: BOSH x 2- DRYER: BOSH x 2- FIRE FIGHTING: 2 x B.A EQUIPMENT- SHIP ALARMS- BILGE E FIRE PUMP: TO SURVEY- SEARCLIGHT: SANSHIN 1000- SECURITY CAMERAS: INTERNET CAPABLE- SHIPS SAFES: 2

### REFIT 2019 - 2020

---

INTERIOR: 1. New Carpets – all interior. - Guest and Master Cabin - Cabins - Main Saloon - Sky Lounge Saloon 2. New Carpet Underlay – all interior 3. Galley full Paint Job 4. Galley Fridges – Compressor gas leak repair and Gas refill. 5. New Shelf made in the galley in place of

old Camera system screen. 6. New window Blinds: - Main Saloon - Sky Lounge - Master Cabin - Day head 7. New window Curtains: - Guest and Master Cabins - Master Bedroom - Main Saloon Door - Sky Lounge Saloon Door 8. New Air Condition Air Handlers - all the interior 9. New Air Condition Air Ducts – all the interior 10. New Air Condition Thermostats and control screens – all interior 11. Air Condition on the Bridge improved to Blow on the windows and prevent heating of the equipment. 12. New Miele Washing Machine. 13. Pressure Valves on Crew toilets replaced. 14. New Led Led Lights and Dimmers – all interior 15. New Chandeliers Above Main Dining table saloon. 16. New upholstery all interior furniture: - Main Deck Saloon Dining Table – 8x Chairs - Sky Lounge Card Table – 4x Chairs - Main Deck Saloon Bar Chairs 2x - Main Saloon Sofas – 2x - Master Cabin Sofa – 1x 17. New Bed mattresses: - Guest and Master Cabin - Captains Cabin 18. New RGB and White Led System on all the Interior Staircases – 1x Strip of led Per Step 19. Installation of mirror in the Guest corridor 20. New Drink Fridges 2x 21. Laundry room Wooden Parts Repair 22. New Set of Pillows and covers for beds and sofas 23. New Sets of bed linens – all cabins 24. New Lamp shades in 2x Guest Cabins

**BRIDGE AND NAVIGATION EQUIPMENT:** 1. New Navigation Screens 3x – Raymarine Axiom 2. New Wind Log 3. New Speed Log 4. New Depth Tansducer with Fishfinder 5. New Wind Log Control Screen 2x 6. New GPS System 7. New GPS Control Screen 2x 8. New Gyro Compass 9. AIS System 10. Autopilot and Steering System extensive service and configuration. 11. New VHF Antenas 2x 12. New CCTV Camera System raymarine - 1x Camera Port side Main Deck - 1x Camera STB side Main Deck - 1x Camera Stern Main Deck - 1x Camera on the mast Pointing Stern - 2x thermal Cameras in the Engine Room

**EXTERIOR DECK:** 1. Full Paint Job 2. New Teak Deck on Steps Leading to Swimming platform and Swimming Platform 3. New RGB and White Led Strip System on Each exterior Staircase – One LED Strip per each Step. 4. New Mast Side Flood Lights 5. New Stern Flood Lights 6. 4x Harness rails For Cleaning Port and STB side. 7. Garage Floor – Full paint job with non skid 8. 15x New Fenders with spare covers 9. New Fridge on Sun Deck 10. New Yacht name on the stern with RGB plus white Lights 11. New full set of mooring lines 12. New Speakers and amplifier on Sky Lounge 2x 13. Bosuns Locker Paint Job 14. Antifouling of Hull, Props and Shafts 15. New Sun deck Upholstery: - 3x Bar Stools - Cushions around Jacuzzi - Seat in front of Jacuzzi 16. New Set of exterior Pillows 17. Antifouling of hull 18. Antifouling of Main Propellers, Bow Thruster Propellers and Shafts

**ENGINEERING:** 1. 2x Main Engines Exhaust Manifold overhaul: - Replacment of all gaskets - Replacment of all Rubber Seals - Replacment of all copper and metal Gaskets - New Exhaust manifold Port Engine, STB manifold - New Exhaust manifold Elbow Port Engine, STB Elbow 2. New Port Main Engine Starter 3. New Wet Exhaust Port Main Engine 4. Garage Hydraulic system Service and set up 5. Tender and jet-ski Winch service and Set up 6. New Exhaust Flange after Turbo STB Engine, Port Flange 7. New Coolant Pipe on STB Generator 8. 4x Air condition Chillers Service, Gas top up and Salt water system Cleaning. 9. Emergency Petrol Fire Pump Service 10. New Generator Starting Batteries 11. New Generator Battery Charger 12. New Flexible Fuel hoses STB Generator 13. New Flexible Hoses STB Main Engine 14. New Service Batteries 15. New Bridge MTU Control Screen 16. Alfa Laval Fuel Separator Repair, Service and Spare Parts 17. Generator Voltage lifting from 110v to 220v 18. New Escape Ladder for Engine Room 19. ASEA Shore Power Converters Voltage Lifting from 110v to 220v 20. Overhaul of Several Valves 21. Bow Thruster Propeller overhaul 22. Overhaul of 2x Jets Pumps Black and Grey water. 23. New

Hydraulic Fluid Heat Exchangers.24. Repair delaminated STB Stabiliser Fin25. New Pressure tank for fresh water system26. New hinges for Side boarding doors 4x27. New hinges for Bosuns Locker Hatch28. Repair of STB VIP Cabin Shower wood29. New Navigation Lights Screens30. New Frames for Navigation Equipment31. New Run Dry Protection pump for Sewage Treatment Plant32. Overhaul of Bilge Pump manifold Valves33. STB Anchor winch Paint job and new Seals.34. Generator Sea Water Pump New Impellers and Seals35. Electric Boards Cleaning and test36. All machinery has been serviced following manufacturer specification using only original parts and fluids.37. All parts that have to be replaced periodically such as anodes have always been replaced on time. FIRE FIGHTING AND LIFE SAVING APPLIANCES: 1. New Fire Fighting Gear, 2x Breathing apparatus and 1x Tank 2. New 25x SOLAS Life Jackets 3. New EPIRB 4. New SART 5. New MOB Light and Smoke Signal 2x 6. New GMDSS emergency VHF 2x 7. New PLB 2x 8. Life raft and Hydrostatic Release Valve Service 9. Fire Extinguishers and Engine Room CO2 System Service WATER TOYS AND TENDERS: 1. New 5m Williams Diesel Jet 505 Tender 2. 3.5m AB Tender with Honda outboard Engine 20HP 3. 2x Inflatable Paddle Boards 4. 2x Sets of Diving equipment with Tanks

---

## Exclusions

Owner's personal belongings.

---

## Disclaimer

The Company offers the details of this vessel or yacht in good faith but cannot guarantee or warrant the accuracy of this information nor warrant the condition of the vessel. A buyer should instruct his representatives, agents, or his surveyors, to investigate such details as the buyer desires validated. This vessel or yacht is offered subject to prior sale, price change, or withdrawal without notice.



# PHOTOS

**PROFILE**



**FLY\_DECK**



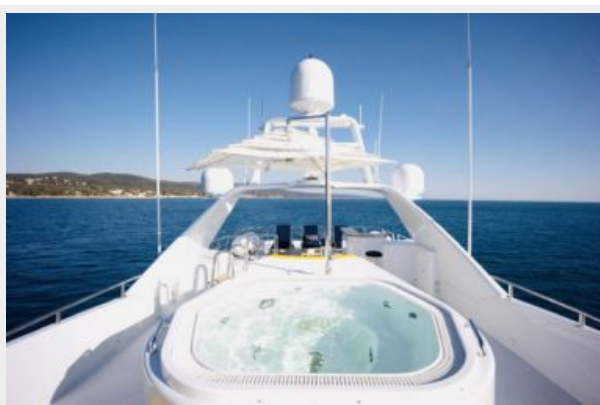
**FLY\_DECK\_**



**FLY\_DECK DINING AREA**



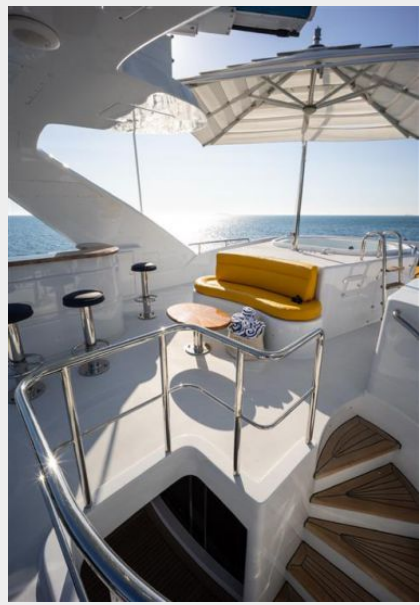
**SUN\_DECK\_JACUZZI AREA**



**SUN\_BATHING AREA**



### STAIRS TO SUN DECK



### MAIN\_DECK\_DINING\_AREA



### MAIN\_DECK\_SALOON \_



### MAIN\_DECK\_SALOON



### MAIN\_DECK\_FORMAL DINING AREA



### FLY\_DECK\_SALOON



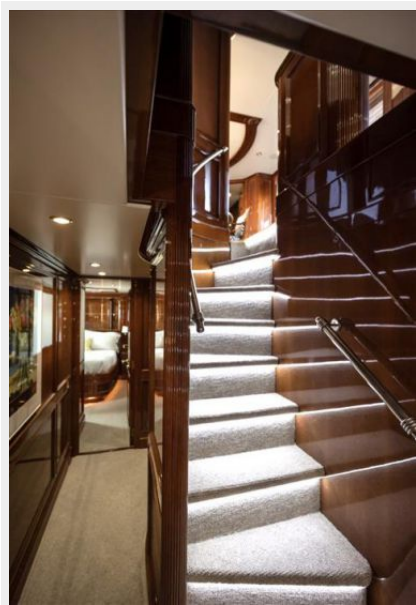
**WHEELHOUSE**



**WHEELHOUSE**



**STAIRS TO MAIN DECK**



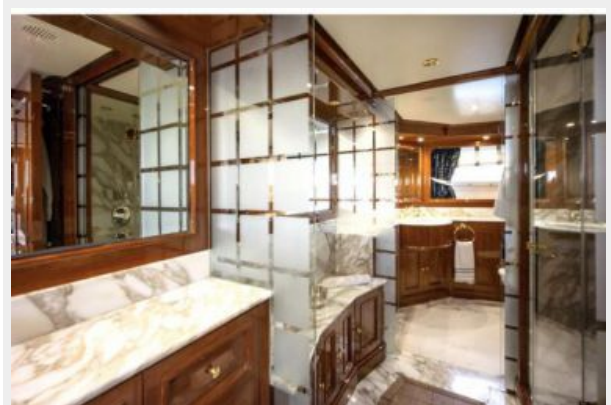
**MASTER CABIN**



**MASTER CABIN**



**MASTER BATHROOM**



### VIP CABIN



### VIP BATHROOM



### TWIN CABIN



### BATHROOM



# CONTACTS

---

Andrey Shestakov, leading yacht broker of the sales department of Shestakov Yacht Sales Inc. Shestakov Yacht Sales Inc., the official representative of the Miami/Fort Lauderdale FL headquarters.

## Contact details

---

Email: [andrey@shestakovyachtsales.com](mailto:andrey@shestakovyachtsales.com)

Web: [shestakovyachtsales.com/en/](http://shestakovyachtsales.com/en/)

## Telephones

---

USA: +1(954)274-4435

## Office hours

---

Monday – Saturday: **9:00 - 21:00** EDT

Sunday: **closed**

## Address

---



Harbour Towne Marina, 850 NE 3rd St,  
STE 213, Dania, FL 33004