

## TANGO NUEVO — OFFSHORE



**Builder:** OFFSHORE

**Year Built:** 2005

**Model:** Motor Yacht

**Price:** PRICE ON APPLICATION

**Location:** United States

**LOA:** 66' 6" (20.27m)

**Beam:** 19' 3" (5.87m)

**Max Draft:** 5' 9" (1.75m)

**Cruise Speed:** 14 Kts. (16 MPH)

**Max Speed:** 17 Kts. (20 MPH)

Our experienced yacht broker, Andrey Shestakov, will help you choose and buy a yacht that best suits your needs **TANGO NUEVO — OFFSHORE** from our catalogue. Presently, at Shestakov Yacht Sales Inc., we have a wide variety of yachts available on our sale's list. We also work in close contact with all the big yacht manufacturers from all over the world.

If you would like to buy a yacht **TANGO NUEVO — OFFSHORE** or would like help answering any questions concerning purchasing, selling or chartering a yacht, please call **+1(954)274-4435**

# TABLE OF CONTENTS

TABLE OF CONTENTS	2
SPECIFICATIONS	5
Overview	5
Basic Information	5
Dimensions	5
Speed, Capacities and Weight	5
Accommodations	5
Hull and Deck Information	5
Engine Information	6
DETAILED INFORMATION	7
Walkthrough	7
Construction	8
Deck Equipment	9
Aft Deck / Sport Cockpit	10
Flybridge and Boat Deck	11
Salon	11
Galley and Laundry Equipment	12
Pilothouse	12
Electronics and Navigation	12
Master Suite	13
VIP Guest Stateroom	14
Guest Stateroom / Office	14
Guest / Day Head	14
Guest / Crew Stateroom	15
Lazarette / Utility Area	15
Engine Room and Mechanical Equipment	15
Electrical Equipment	16
Exclusions	17

Exclusions	17
Disclaimer	17
PHOTOS	18
Salon	18
Salon	18
Salon	18
Salon	18
Salon	18
Galley	18
Master Stateroom	19
Master Stateroom	19
Master Stateroom	19
Master Bath	19
Master Shower	19
Forward Guest Stateroom	19
Guest Stateroom	20
Forward Guest Bath	20
Stairway to Pilothouse	20
Pilothouse	20
Pilothouse Seating	21
Helm	21
Helm	21
Flybridge	21
Upper Helm	21
Upper Helm	21
Flybridge	22
Flybridge	22
Boat Deck	22
Foredeck	22

Foredeck	22
Aft Deck	22
Aft Deck	23
Swim Platform	23
Crew Cabin	23
Crew Quarters	23
Engine Room	23
Engine Room	23
Engine Room	24
Stern	24
Layout	24
Layout	24
CONTACTS	25
Contact details	25
Telephones	25
Office hours	25
Address	25

# SPECIFICATIONS

## Overview

Tango Nuevo is a rarely offered and highly sought-after Offshore Yacht. Few builders can achieve this caliber of quality and attention to detail during the build process.

## Basic Information

Category: Motor Yacht	Model Year: 2005
Year Built: 2005	Country: United States

## Dimensions

LOA: 66' 6" (20.27m)	Beam: 19' 3" (5.87m)
Max Draft: 5' 9" (1.75m)	

## Speed, Capacities and Weight

Cruise Speed: 14 Kts. (16 MPH)	Max Speed: 17 Kts. (20 MPH)
Water Capacity: 595 Gallons	Fuel Capacity: 1800 Gallons

## Accommodations

Total Cabins: 4	Sleeps: 8
-----------------	-----------

## Hull and Deck Information

Hull Material: Fiberglass	Hull Configuration: Semi-Displacement
---------------------------	---------------------------------------

## Engine Information

---

**Engines:** 2

**Manufacturer:** Caterpillar

**Model:** C-18

**Engine Type:** Inboard

**Fuel Type:** Diesel

---

# DETAILED INFORMATION

---

## Walkthrough

---

Tango Nuevo is a rarely offered and highly sought-after Offshore Yacht. Few builders can achieve this caliber of quality and attention to detail during the build process. Her spacious layout results from a wide 19'3" beam giving one the feel of a yacht far more than 66'. This is quite possibly the cruising couples' perfect yacht; she has full walk-around side decks coupled with high bulwarks making line handling a breeze.

Beginning aft is the unique "Sport Cockpit" with transom door, this area is great for watersports or fishing alike. It has a built-in stainless steel swim ladder, freshwater shower, and rod holders. To port and starboard are molded stairs that lead up to the fully covered aft "California style" deck complete with molded aft settee, two granite-topped hilo tables, a wet bar with refrigerator, ample storage cabinets, and aft docking station with engine and thruster controls. In addition to the watertight door on the transom, the engine room can be accessed through a deck hatch forward on the starboard side of the aft deck. Port and starboard wing doors for weather protection lead to the foredeck via wide side decks with high bulwarks.

The salon is accessed through a large sliding door with top and bottom glass windows. Upon entry, the large, framed perimeter windows provide a spacious feel greatly complimenting the satin teak joinery with Carpathian Elm trim and crown molding throughout. On the port side is a custom U shaped sofa with built-in storage which surrounds an electric hilo table with expandable leaves. The entertainment center is housed in the starboard side cabinetry with a pop-up flat-screen TV and stereo components.

Forward to port, on the same level as the salon is the galley with granite countertops. The galley is equipped with full-size household appliances and abundant storage. A built-in wine cooler is across from the galley to starboard followed by a private stairway that leads down to the master suite.

Two steps up from the salon and galley are the large pilothouse. An elevated Lshaped settee and a large teak rectangular table with a swing-down leaf are aft to port. There are two Pomanette Platinum Series helm chairs on stainless steel pedestals which can double as additional seats for dining. Port and starboard weathertight doors provide access to the side decks. The centerline helm console with teak wheel offers excellent visibility and access to all navigation electronics. A generous chart locker and drawer are forward to port. Forward to

starboard is a built-in refrigerator facing aft.

The master suite is entered privately from a stairway on the starboard side forward in the salon. In the vestibule just outside the door to the master stateroom, you will find two cabinets that hold the washer and dryer. The master stateroom has a king-size centerline berth with built-in nightstands. There are two generous cedar-lined closets, a vanity with stool, built-in dresser drawers, and abundant cabinetry. The en suite bath is to starboard with granite-topped vanity and oversized stall shower with a glass door.

The guest accommodations are accessed from a stairway that leads down from the pilothouse. All the way forward is the VIP guest stateroom with a centerline queen-sized island berth and two large storage drawers beneath. To port and starboard are two cedar-lined hanging lockers, built-in vanity with a mirror, two overhead hatches that provide ample natural light, along with port and starboard portlights. Through a companionway, aft to port is the versatile guest stateroom/office. A Pullman berth with two storage drawers beneath offers comfortable guest accommodations in the up position. There is a double cedar-lined hanging locker and storage cabinetry. A built-in desk with Carpathian Elm top is forward with bookshelves and flat-screen TV overhead.

The flybridge and boat deck is accessed by a stairway in the pilothouse or by a ladder on the aft deck. There is a fiberglass hardtop extending aft to the radar arch. A Lexan venturi windshield with forward and side EZ2CY enclosure also extends aft to the arch. Two Pompanette cushioned helm chairs on stainless steel pedestals face the centerline flybridge helm station. A large molded Lshaped cushioned settee with two granite hilo tables are aft to port. To starboard is molded fiberglass cabinetry with refrigerator, sink, and storage. A cushioned lounge with a lift-up back tops the cabinet. An ice maker is builtin to port on the aft side of the settee. An electric refrigerator/freezer box is to starboard. Aft of the flybridge area is the large boat deck with davit. Stainless steel railing runs the entire perimeter of the boat deck. A Lexan hatch with stainless handrail to starboard opens to access the aft deck.

The engine room, utility area, and a fourth stateroom with upper and lower berths and an ensuite head with stall shower are all accessed via a watertight swingout door centerline on the transom. The stateroom is well appointed for guests or crew. The engine room is air-conditioned and very well-designed offering easy access to all mechanical equipment and systems.

## Construction

Offshore hulls feature a generous beam and finelyveed, deep forefoot tapering to a 12-degree



deadrise at the transom. This design produces a hull that is quick to get on a plane and knives cleanly through waves and chop throughout the speed range. A long shallow keel, low center of gravity, and substantial displacement result in a gentle easy motion with excellent directional stability and boat handling characteristics in virtually any sea condition.

All Offshores are hand laminated to ABS specifications. Below the waterline, Offshore's solid hand laminate achieves maximum strength and maximum osmosis protection while providing the best compression strength for the

installation of running gear, "V" struts, stabilizers, and all through the hull bottom fittings. Above the waterline, vacuum bagging assures the best saturation and adhesion of Core Cell sandwich material and eliminates excessive resin. Core Cell is a closed-cell polymer-based foam. Core Cell will not absorb water and combines stiffness and impact strength with excellent resistance to heat distortion.

Offshore builds the hull as one integral laminated component. The main deck and cabin is also one laminated component that is laminated to the hull. The boat deck, flybridge, and pilothouse roof is one fiberglass component that is laminated to the cabin structure. When these three individual modules are laminated together an extremely strong, rigid, and watertight unistructure is formed that meets or exceeds ABS requirements. Four massive full-length stringers and multiple athwartship frames are laminated and bonded in the hull to minimize panel size and achieve incredible hull strength. Heavy laminates at the bow form watertight compartmentalization of the bow area creating a "crash bulkhead". The bilge areas are divided into four sections to further increase watertight integrity. Each section has its own automatic bilge pump, and all can be made common by gate valves in each section.

Incorporated in the hull construction are two heavily laminated rub rails that are structural components of the hull. The substantial rub rails, capped with solid stainless steel, increase the strength of the hull sides, and protect the hull when coming alongside a piling or dock versus bolt-on rub rails, typically used in the industry which are not as substantial and does not offer the same hull protection.

---

## Deck Equipment

---

- Maxwell 24V, 3,500 lb. anchor windlass with 3station control, separate chain, and rope lockers
- Simpson Lawrence 110 lb. anchor with 300', 7/16" HT chain and chain stopper

- Port and starboard storage lockers at bow
- Rope locker for 2nd anchor rode
- Provision for 2nd anchor with dual 316 stainless channels and rollers
- Fresh and saltwater washdowns at the bow
- (3) Buell low profile trumpet air horns with 120V compressor
- Exalto stainless articulating windshield wipers with washer system
- Port and starboard dockside water pressure connections
- Central drain system minimizing thru-hull fittings
- Deck discharge for holding tank
- Walkaround decks with high bulwarks midships
- 2Tone nonskid on all decks, pilothouse roof white nonskid
- Molded-in facet and plank lines for appearance and strength
- Exterior stainless 316 grade (including screws, bolts, and nuts), welds ground and polished
- 1¼" Stainless steel handrails and bow rails
- Port & starboard bulwark boarding doors
- New Wave Fabrication 6step tide rider boarding stairs
- Manship overhead hatches with Ocean Air sliding screens/shades
- (10) Manship stainless steel portlights powder coated to match gel coat
- 316 Stainless steel hawse holes with cleats, 316 Stainless steel bow chocks, 316 stainless steel deck cleats
- International navigation lights
- ACR RCL100 remote searchlight
- Cantalupi waterproof deck lights and LED safety lights
- Aluminum reinforced exterior doors, exterior covered with FRP and gel coated, interiors covered with matching interior wood, stainless steel door frames
- Bow and stern staffs, stainless steel sockets

## Aft Deck / Sport Cockpit

---

- Aft deck engine and thruster controls, rudder indicator and engine startstop switches
- Port aft deck storage cabinet with covered sink, Isotherm refrigerator, and teak ventilation grates
- Starboard aft deck storage cabinet with hatch & ladder to lazarette, crew, and engine room
- Varnished teak cap rail w/covers
- Molded FRP Sunbrella cushioned settee w/cover
- (2) Granite hilo tables w/covers
- Stainless steel ladder w/FRP treads to the boat deck
- (2) Aft deck floodlights
- Handheld shower at sport cockpit
- Freshwater wash down at sport cockpit
- (2) Speakers in aft deck overhead with volume control
- (5) Stainless steel removable rails at the transom
- (6) Rod storage rack

- (2) Stainless steel rod holders
- Camera at aft deck
- Stainless steel popup cleats at sport cockpit
- Stainless steel swim ladder at sport deck folding into a storage locker

---

## Flybridge and Boat Deck

---

- Steelhead Marine ST1800 hydraulic davit w/telescoping boom
- 1¼" stainless steel rails w/welded stainless steel lifelines
- Stainless steel flag socket w/teak flagstaff
- Manship hatch to aft deck w/stainless steel safety rail
- Freshwater wash down outlet
- Raritan icemaker w/stainless steel face
- L shaped molded FRP settee w/Sunbrella cushions & cover, storage beneath
- (2) Granite rectangular hilo tables w/covers
- (2) Pompanette cushioned helm chairs on stainless steel pedestals
- Centerline helm station w/stainless steel destroyer wheel, complete instrumentation
- Lexan Venturi windshield w/stainless steel frame
- (3) Side EZ2CY enclosure
- Molded FRP starboard cabinet w/sink, builtin Isotherm refrigerator w/stainless steel face & storage
- Teak ventilation slats inside all storage cabinetry & under settee seating
- FRP radar arch
- FRP hardtop w/recessed lighting

---

## Salon

---

- Sliding aft door with fixed glass windows top & bottom
- Large windows for visibility while seated
- Roman shades
- Ushaped settee w/storage beneath
- Electric teak hilo table w/expandable leaves
- Popup TV and audio surround speaker system
- Satin-finished teak woodwork, recessed panel cabinet doors
- Solid wood crown molding throughout the salon
- (14) Recessed ceiling lights with dimmer controls and (4) 120V wall sconces
- Padded soft vinyl removable headliner
- High-quality carpet with sound pad
- Aft stairway to owner's suite
- Uline wine cooler (15 bottles)

---

## Galley and Laundry Equipment

---

- Granite countertops
- Overhead recessed lighting w/ dimmer control, under cabinet lighting
- Foldout soap tray at galley sink
- Drawers and cabinets fitted w/ push/pull latches & lined with laminate
- (3) Under counter cabinets, (4) overhead cabinets
- Kohler under-mounted stainless-steel sink with Grohe faucet
- Grohe soap dispenser
- Garbage disposal
- Trash compactor
- Dishwasher
- 4-Burner 220v cooktop w/ potholders
- GE oven below cooktop
- Microwave oven w/vent fan
- GE Profile Arctica side by side refrigerator & freezer w/teak doors, ice & water dispenser
- Louvered doors w/recessed panel trim
- Crown Molding
- Front-loading washer & dryer

---

## Pilothouse

---

- Helm station with complete engine instrumentation, function alarms, and rudder indicator
- Headhunter Tank Sentry tank monitoring system for fuel, water & holding tanks
- Back lit AC & DC distribution / breaker panels
- Chart locker & drawer
- LED recessed lighting with dimmer controls
- (3) Exalto stainless steel articulating windshield wipers with washer system
- Port & starboard sliding track doors with stainless steel frames
- (2) Ventilation overhead hatches with Ocean Air sliding screens/shades
- (2) Pompanette Platinum series helm chairs w/ stainless steel pedestals & footrests
- Raised L shaped settee & teak table w/fold out leaf
- Teak & holly sole
- Padded soft vinyl removable headliner
- SubZero under counter refrigerator

---

## Electronics and Navigation

---

### Pilothouse

- (2) GARMIN 17" Chartplotters & Radar
- Furuno FA150 AIS class A transponder

- Garmin autopilot
- Garmin depth & navigational data display
- Icom ICM602 VHF transceiver
- Icom ICM802 Single Side Band radio
- KVH M7 satellite television system controller
- KVH TracPhone F55 satellite phone system
- KVH TracPhone FB250 compact broadband internet system
- ACR remote searchlight control pad
- Village Marine Tec watermaker control panel
- Xantrex inverter control panel
- Exalto windshield wiper/washer controls
- (2) Caterpillar Marine Power Displays

### Flybridge

- (2) GARMIN 17" Chartplotters & Radar
- GARMIN Autopilot
- Garmin depth & navigational data display
- Furuno FA150 AIS class A transponder
- Icom ICM502 VHF transceiver
- ACR remote searchlight control pad
- (2) Caterpillar Marine Power Displays

## Master Suite

---

- King size island berth w/drawer & cabinet storage beneath, upholstered headboard
- (2) Built-in nightstands w/drawers & storage cabinets
- Port & starboard mirrored lockers
- Bureau w/(3) storage lockers & mirror
- Built-in vanity w/granite top & storage drawer
- (2) Portlights w/Roman shades
- Overhead recessed LED lighting
- Safety escape hatch overhead
- (4) Built-in dresser drawers
- (2) Cedar-lined hanging lockers

### Master Head

- Tecma Silent Flush toilet
- Teak granite-topped vanity w/undermounted ceramic sink, storage locker beneath
- Teak framed mirrored medicine cabinet

- Stall shower w/frameless glass door, teak grate & granite seat
- Ventilation system
- Teak sole
- "Newport Brass" fixtures & accessories
- Teak magazine rack

---

## VIP Guest Stateroom

---

- Queen size island berth w/storage beneath
- (2) Brass reading lights
- Builtin nightstand shelves port & starboard
- (2) Cedar-lined hanging lockers LCD TV
- Recessed LED overhead lighting on a dimmer switch
- (2) Stainless steel portlights w/Roman shades
- Overhead hatch w/Ocean Air shade/screen
- Builtin vanity w/teak framed mirror, storage drawer, (2) sconce lights, stool

---

## Guest Stateroom / Office

---

- Convertible settee/upper & lower single berths
- Double door cedar-lined hanging locker
- Builtin desk w/(3) storage drawers & cabinet below, desk chair
- Overhead bookshelf
- LCD TV
- Stainless steel portlight w/Roman shade
- Carpeted sole

---

## Guest / Day Head

---

- Tecma Silent Flush toilet
- Teak granite-topped vanity w/undermounted ceramic sink, storage locker beneath
- Teak framed mirrored medicine cabinet
- Stall shower/mini tub w/frameless glass door, teak grate
- Ventilation fan
- Teak sole
- "Newport Brass" fixtures & accessories
- Overhead hatch w/Ocean Air shade/screen
- Stainless steel portlight w/Roman Shade
- Teak sole

---

## Guest / Crew Stateroom

---

- Upper & lower single berths
- Hanging locker
- Storage cabinet & drawers
- (2) Reading lights LCD TV
- Overhead recessed LED lights
- Portlight w/Roman shade
- Teak vanity w/ solid surface top, storage cabinets beneath, teak framed mirrored medicine cabinet
- Pocket door to head w/Tecma toilet & stall shower
- Ventilation fan
- Teak sole

---

## Lazarette / Utility Area

---

- Builtin workstation w/stainless steel top & storage lockers beneath
- Builtin Craftsman tool chest
- Utility galley counter w/solid surface top, under-mounted
- Franke stainless steel sink, storage drawers & cabinets
- Microwave oven
- Isotherm refrigerator w/stainless steel face
- Pirelli rubber tile sole

---

## Engine Room and Mechanical Equipment

---

- Twin 1000 hp Caterpillar C18 diesel engines w/vibration dampening mounts
- Engine hours: Port 3107; Starboard 3096 (March 2021)
- ZF 550A reduction gears w/2.517:1 ratios
- 3" Aquamet 22 stainless steel shafts
- Polished stainless steel engine beds
- Groco sea strainers at all raw water intakes
- Groco safety seacocks for main engine raw water intakes
- Main seawater intakes plumbed for emergency bilge pump use
- Tides dripless shaft seals w/dual cooling lines
- (2) 4-blade Nibral propellers 42"x31"
- (2) Stainless steel hydrodynamic rudders
- Dual Racor 1000 series fuel filters w/vacuum gauges to each engine
- Racor 500 series fuel filter to each generator
- (3) Aluminum fuel tanks w/sight gauges: 660 gallons port, 660 gallons starboard, 480 gallons centerline forward
- Engine room start/stop panels w/manual gauges

- Fuel manifold system for supply & return management
- Reverso 24V fuel transfer pump
- Reverso fuel polishing system
- 316 Stainless steel exhaust risers connecting to FRP underwater exhaust system
- Wesmar Roll Fin hydraulic stabilizers w/9 sq. foot fins
- Wesmar 25 hp hydraulic bow & stern thrusters
- PTO off each engine transmission for thrusters, stabilizers
- Delta T engine air intake system
- (4) Delta T 11" 120V engine room blowers
- Twin Disc electronic engine controls
- Twin Disc remote control w/50' cord
- Marine Air 90,000 BTU direct expansion air conditioning system, (8) compressors (24,000 BTU engine room air handler)
- Port & starboard air conditioning raw water pumps
- Reverso 24V AC oil change system
- (2) 35-gallon aluminum lube oil tanks (used aft, clean forward)
- Hydraulic power steering system
- Bennett 54" trim tabs with controls at pilothouse & flybridge
- (3) Tecma silent flush heads
- Headhunter 120V holding tank discharge pump
- Sealand 24V standby macerator pump
- (6) 24V, 3700 GPH bilge pumps with Ultra automatic switches
- Whale 40 emergency manual bilge pump
- Ultra-system high water bilge alarm with warning lights at pilothouse
- Gate valve at each watertight structural bulkhead
- Village Marine Tec 1200 gpd watermaker
- Sea X Change watermaker/freshwater polishing system
- (2) Headhunter Mach 5 120V freshwater pressure pump with filter and accumulator tank
- Flojet 24V standby water pressure pump
- Allcraft 35gallon 220V stainless steel water heater
- (3) Shower sump tanks w/24V sump tank pump
- Seawater washdown pump
- Freshwater wash down faucet in the engine room
- Fireboy 60.8 lb. FE241 fire suppression cylinder w/engine shut down system Port & starboard engine room storage cabinets
- White aluminum perforated covering on all engine room bulkheads & ceiling
- (4) 24V engine room lights, (4) 120V AC fluorescent engine room lights
- (2) Engine room cameras Emergency steering tiller

---

## Electrical Equipment

---

- Northern Lights 25 kW generator w/ 5681 hours (March 2021)
- Northern Lights 20 kW generator w/ 5771 hours (March 2021)



- (4) 8D AGM batteries for main engines
- (2) 4D AGM batteries for generators
- (8) 8D AGM batteries to ships service inverter
- Xantrex SW4024, 4kW inverter w/120-amp battery charger for ships service
- Newmar PT2440CE, 24V ships service back up battery charger
- Newmar PT2420CE, 24V battery charger
- Charles CCharger 24V battery charger
- (4) Mastervolt 20-amp converters, 24V to 12V (2) battery cutoff switches
- (2) Battery parallel switches
- Additional 60-amp 24V alternator on each engine for ships service systems
- 24V & 12V distribution/circuit breaker panels w/amp & voltage meters
- 120V & 240V distribution/circuit breaker panels w/amp & volt meters
- (2) Glendinning CM7 Cablemasters w/75' 50-amp; 3 conductor shore power cables each
- Marinco 50 amp, 125V/250V shore power cable
- (2) ACME shore power isolation transformers
- (2) Galvanic isolators LED overhead lighting
- GFI breaker protection at deck, galley, heads, engine room, lazarette
- Central bonding system w/ (2) 6"x12" zinc plates & shaft scratchers

---

## Exclusions

Tools and Owner's personal belongings. While every effort has been made to list all pertinent equipment aboard Tango Nuevo, there are some personal belongings aboard. Prospective purchasers should assume any item not specifically mentioned herein will not convey at closing.

---

## Exclusions

Owner's personal belongings.

---

## Disclaimer

The Company offers the details of this vessel or yacht in good faith but cannot guarantee or warrant the accuracy of this information nor warrant the condition of the vessel. A buyer should instruct his representatives, agents, or his surveyors, to investigate such details as the buyer desires validated. This vessel or yacht is offered subject to prior sale, price change, or withdrawal without notice.

# PHOTOS

Salon



Salon



Salon



Salon

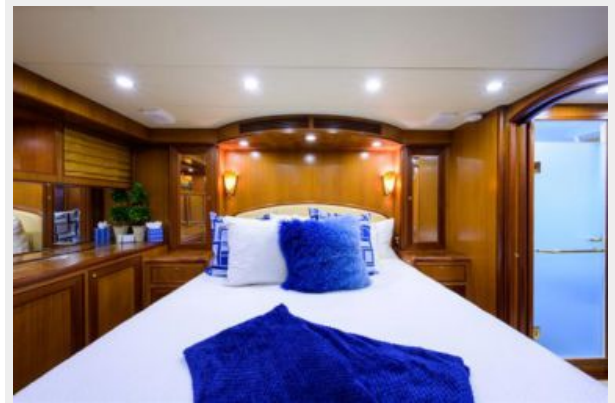


Salon



Galley



**Master Stateroom****Master Stateroom****Master Stateroom****Master Bath****Master Shower****Forward Guest Stateroom**



**Forward Guest Bath**



**Guest Stateroom**



**Stairway to Pilothouse**



**Pilothouse**



**Pilothouse Seating**



**Helm**



**Helm**



**Flybridge**



**Upper Helm**

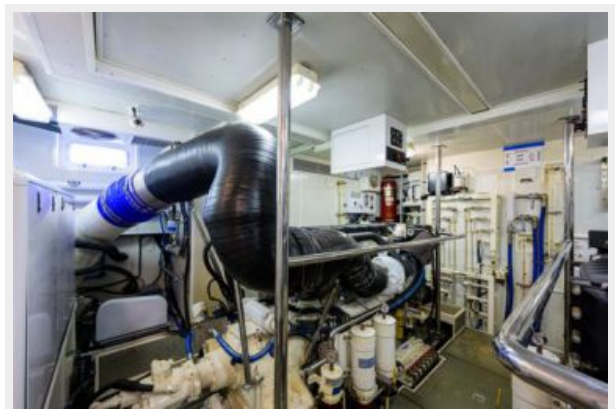


**Upper Helm**

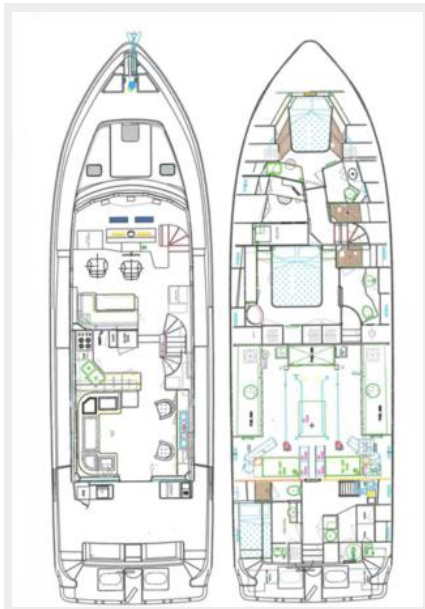
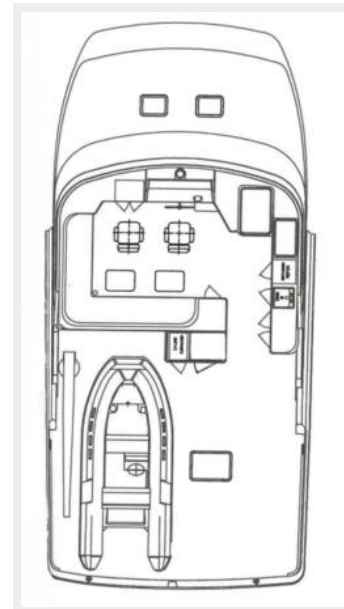




**Flybridge****Flybridge****Boat Deck****Foredeck****Foredeck****Aft Deck**

**Aft Deck****Swim Platform****Crew Cabin****Crew Quarters****Engine Room****Engine Room**



**Engine Room****Stern****Layout****Layout**



# CONTACTS

---

Andrey Shestakov, leading yacht broker of the sales department of Shestakov Yacht Sales Inc. Shestakov Yacht Sales Inc., the official representative of the Miami/Fort Lauderdale FL headquarters.

## Contact details

---

Email:  
**andrey@shestakovyachtsales.com**

Web: [shestakovyachtsales.com/en/](http://shestakovyachtsales.com/en/)

## Telephones

---

USA: **+1(954)274-4435**

## Office hours

---

Monday – Saturday: **9:00 - 21:00 EDT**

Sunday: **closed**

## Address

---



Harbour Towne Marina, 850 NE 3rd St,  
STE 213, Dania, FL 33004