

ANDREA VI — HORIZON



Судостроитель: HORIZON

Год постройки: 2014

Модель: Моторная яхта

Цена: **ЦЕНА ЯХТЫ ПО ЗАПРОСУ**

Местонахождение: United States

Длина общая: 110' 0" (33.53m)

Ширина: 25' 0" (7.62m)

Макс. осадка: 6' 0" (1.83m)

Крейс. скорость: 18 Kts. (21 MPH)

Макс. скорость: 22 Kts. (25 MPH)

Купить **ANDREA VI — HORIZON** а также выбрать подходящую вам яхту из нашего каталога яхт вам поможет опытный яхтенный брокер Андрей Шестаков. На сегодняшний день компания **Shestakov Yacht Sales Inc.** имеет большое количество яхт в собственном списке продаж, а также тесно сотрудничает со всеми крупными яхтенными производителями по всему миру.

Для того чтобы купить яхту **ANDREA VI — HORIZON** а также проконсультироваться по любому вопросу связанному с покупкой, продажей, чартером яхт позвоните по телефону **+7(918)465-66-44**.

ОГЛАВЛЕНИЕ

ОГЛАВЛЕНИЕ	2
ХАРАКТЕРИСТИКИ	6
Обзор	6
Основная информация	6
Размеры	6
Скорость, вместимость и масса	6
Размещение	6
Корпус и палуба	7
Информация о двигателе	7
ПОДРОБНОЕ ОПИСАНИЕ	8
Overview	8
Walkthrough	8
Main Machinery	10
Communication and Navigation Systems	12
Galley and Laundry Equipment	12
Deck Equipment	13
Safety, Security, and Fire-Fighting Equipment	13
Tenders and Toys	14
Exclusions	14
Broker Comments	14
Исключения	14
Отказ от ответственности	14
ФОТОГРАФИИ	15
Salon	15
Salon Bar	15
Salon	15
Salon	15
Salon Looking Aft	15

Dining Area	15
Dining Area	16
Dining Area	16
Hallway to Galley	16
Galley	16
Galley	16
Galley	16
Galley Dinette	17
Master Stateroom	17
Master Stateroom	17
Master Stateroom	17
Stairway to Accommodations	17
Master Bath	17
Forward Stateroom	18
Forward Bath	18
Port Stateroom	18
Port Stateroom	18
Port Bath	18
Starboard Stateroom	18
Starboard Bath	19
Starboard Stateroom	19
Pilothouse	19
Pilothouse Settee	19
Helm	19
Helm	19
Stairway to Flybride	20
Pilothouse	20
Flybridge	20
Flybridge	20

Flybridge	20
Flybridge	20
Flybridge Helm	21
Flybridge Helm	21
Flybridge	21
Flybridge Aft	21
Flybridge Aft	21
Flybridge Aft	21
Foredeck	22
Foredeck	22
Side Deck	22
Foredeck	22
Aft Deck	22
Aft Deck	22
Aft Deck Entrance to Salon	23
Swim Platform	23
Swim Platform	23
Engine Room	23
Engine Room	23
Engine Room	23
Crew Quarters	24
Crew Quarters	24
Crew Head	24
Captain's Cabin	24
Crew Cabin	25
Starboard Profile	25
Bow	25
Port Profile	25
Aerial Foredeck/Bow	26

Port Bow Profile	26
Stern	26
Port Stern Profile	26
Layout	27
Starboard Stern Profile	27
КОНТАКТЫ	28
Контактная информация	28
Телефоны	28
Время работы	28
Адрес	28

ХАРАКТЕРИСТИКИ

Обзор

ANDREA VI is the flagship of the RP 110 series by Horizon. Her current and only owner has operated her from inception with an open checkbook policy and it shows from bow to stern. She is current in all services and is a pleasure to show.

Основная информация

Тип судна: Моторная яхта

Модельный год: 2014

Год постройки: 2014

Страна: United States

Размеры

Длина общая: 110' 0" (33.53m)

Ширина: 25' 0" (7.62m)

Макс. осадка: 6' 0" (1.83m)

Скорость, вместимость и масса

Крейс. скорость: 18 Kts. (21 MPH)

Макс. скорость: 22 Kts. (25 MPH)

Чистый вес: 222 Pounds

Вместимость воды: 800 Gallons

Объем топливного бака: 5500 Gallons

Размещение

Всего кают: 4

Спальные места: 8

Каюты экипажа: 3

Спальных мест экипажа: 5

Корпус и палуба

Материал корпуса: FRP

Комплектация корпуса: Semi-Displacement

Дизайнер экстерьера: JC Espinosa Yacht Design
Дизайнер интерьера: Marty Lowe Design

Информация о двигателе

Двигатели: 2

Производитель: Caterpillar

Модель: C32 Acert

Тип двигателя: Inboard

Тип топлива: Diesel

ПОДРОБНОЕ ОПИСАНИЕ

Overview

ANDREA VI, delivered in 2014, is a beautiful representation of the successful RP raised pilothouse series. Exterior design by the renowned J.C. Espinosa, her interior design by Marty Lowe offers an open and light feel throughout. Her accommodations offer four well-appointed staterooms sleeping eight guests. ANDREA VI is being offered to the market for the first time. Her present owner had her built with no expense spared.

Key Features

- Marty Lowe interior
- Naval architecture by Donald Blount and Associates
- Design by JC Espinosa
- 25' Beam with full walk around
- Upgraded Caterpillar C32 1,900 HP engines
- Both main engine aftercoolers replaced as per Caterpillar schedule (Jan 2020)
- Scrimp infused cored lamination
- Air-conditioned flybridge
- Double chine hull for ride stability
- Whitewashed oak flooring and cabinets

Walkthrough

Marty Lowe, with the input of the knowledgeable and experienced owner, found the perfect balance of open and light interior giving the boat the feel of a Nantucket Beach house! One arrives onto the aft deck by entering on the oversized swim platform and coming to the aft deck steps on either side of the transom. One can also reach the aft deck from the passerelle. Once on the aft deck, one will find a spacious layout with a large built-in oval settee with additional seating making for the perfect place to congregate for a drink or to enjoy the activities in the water. In this area, one will find an aft helm station, BBQ, and spiral built-in stairs to the upper deck. Moving forward through large, curved glass sliding doors one enters the openness of the main salon and dining area with large windows giving a light and airy feeling. There are sunshades and blackout window treatments. To port one will find a full bar, perfect for servicing the main salon or aft deck. The main salon has settee seating to port and forward with lounge chairs aft and to starboard of the center cocktail table. Forward of the main salon seating area, one will find a beautiful white marble dining table with seating for eight.

Forward to port is the well-thought-out service pantry and entry to the galley. The galley is larger and found with state-of-the-art appliances. The galley is a country kitchen style with settee seating and a table for 8, which proves a great spot for breakfast, snacks or to meet up with the chef to discuss the daily menu. As one goes forward of the galley one will find a set of steps to the VIP cabin. The VIP is a full-beam cabin with a queen berth, large bath, ample storage, and hanging closets. Going aft to starboard from the galley one will find a well-appointed dayhead, formal entry door, and the stairwell down to the lower guest accommodations. Once down the stairs to the lower accommodations, one lands in the guest foyer. From this point, one can go forward to the two VIP cabins with queen berths, large bathrooms, ample storage, and closets. Going aft from the guest foyer one will reach a pair of double doors with access to the Master Stateroom. The Master is a full-beam cabin with a king berth and huge full beam his and her bathroom with a large walkthrough shower separating them. The master offers ample storage, a chest of drawers to starboard, and a seating area to port. The master has two large wardrobes.

Back on the main deck, one can reach the Pilothouse up a set of steps. Once in the pilothouse, one will find state-of-the-art Navionics. There is an elevated settee with a table with 270-degree views. Also found here is a center helm seat, with an additional guest seat to starboard. Ample workspace and storage are found within the pilothouse as well.

From the Pilothouse, one can reach the flybridge where one will find a helm station to starboard. Aft of the helm is a fully functioning service area with grill, refrigeration, icemaker, wine cooler, and sink with countertop large enough for a buffet. There is also a top-up TV easily viewed from the large built-in settee and seating to port. The area has a large table perfect for dining. Further aft one will find a center mast with a dayhead built within. From the forward windscreen to the mast can be enclosed with air conditioning or open to the natural elements.

Aft of the mast one will find a 2017 14' Novurania inflatable with 70hp outboard athwartships. When the tender is removed, this area is used for lounging with chairs and tables. This area is shaded by sail-type awnings. To port, just ahead of the tender, one has access to the main aft deck by taking the stairs down. The main deck has a large covered walkaround side deck not often found on a vessel of this size. Going forward on the main deck one will reach the bow area where one will find a large raised curved seating area with a table and large sun pads. Beneath the sun pad with access from the deck, either side one will find a large bosun's locker. The decks are teak with a light decking seam.

Entering the crew quarters from the transom one will find 3 crew cabins, the captain's cabin is to port and two crew rooms with over/under berths are to starboard. Centerline forward is the entrance to the engine room. There are a set of washers and dryers found in this area.

Main Machinery

Main Engines

Engine Type: Caterpillar C32 1900 hp each

Engine Hours: Approximately 2,700 each (March 2021)

Both main engine aftercoolers replaced as per Caterpillar schedule (Jan 2020)

Both main engines had valve adjustments (Jan 2020)

Gearboxes for Main Engines: ZF 3055A 10 degree down angle 2.52:1

Drive: Conventional shaft

Speed Consumption

Maximum: 22

Cruising: 18

Economical: 11

Range @ Economical speed 1,700 nm

Generators & Electricity

Output: 55 kw 208VAC 60Hz 3 Phase

Generators: Onan 55 kW

Generator Hours: Approximately 4,400 each (March 2021)

Both generator raw water pumps replaced (Nov 2018)

Asea frequency converter model AC36-3 36kVA

Shore Power: 4 Glendinning Cablemaster x 100 amp

Shore power available on both bow and stern

Batteries

Main Engine Starting: 4 x Mastervolt AGM 225 AH

Generator Starting: 4 x Mastervolt AGM 225 AH

New generator and main engine batteries installed (Nov 2019)

Emergency: 2 x Mastervolt AGM 225 AH

Air Conditioning:

Type: Marine Air chilled water 7.5 tons 3-stage MCGV270 SRCN

Other Machinery

Watermakers: Sea Recovery 1,400 GPD

Trim Tabs/Stabilizers: Trac Digital 370 with 16 square ft fins

Bow Thruster: Trac ABT 55 HP hydraulic

Stern Thruster: Trac ABT 55 HP hydraulic

Steering System: Kobelt 7085-B-12

Primary Fuel Separator: Racor 1000 triple

Secondary Fuel Separator: Cataallar

Fuel Filtration: Reverso fuel polishing system

Sewage System: Hamann Super Mini Plus

Fresh Water System: Headhunter Mach V and Gianneschi 24V backup

Lube Oil Capacity Airtex aluminum tank 10 gallons

Waste Oil Capacity Airtex aluminum tank 10 gallons

Two sets of washer and dryers, one in guest foyer and one in crew area

Communication and Navigation Systems

Communication

SATcom: KVH V3

Telephone System: Panasonic

VHF: 2 ICOM M-506

Cellular Phone System: None – There is a KVH LTE system w/data only

Intercom: Panasonic

Navigation

Radars: 4' Furuno DRS6A+XN12A and 6' Furuno DRS12A+XN13A/6

Compass: Satellite Furuno SC 33

Magnetic Compass: Richie

AutoPilot: Simrad AP70 MKII with 3 FY 80 Jog levers

Depth Sounder: Furuno DFF1

GPS: Furuno NAVNET and Garmin integrated system

Ships Computer: 1 x Nav PC plus KEP Marine MPC64550 plus 2 x Nav PC Lenovo Think Center M910S

Wind/Speed Log: 2 x Furuno RD 33

Galley and Laundry Equipment

Main Galley Equipment

Cooking Equipment: Miele cooktop KM5860, Miele oven H4884BP

Refrigeration/Freezer: Sub Zero 736 TCI Refrigerator, Sub Zero freezer drawer 700BF

Dishwasher: 2 x Bosch SKE9ER55 UC

Crew Galley/Mess Equipment

Refrigeration/Freezer: Summit EF 115 2 55

Additional Galley Equipment

Cooking Equipment: Miele oven under microwave H4684B

Refrigeration/Freezer: 2 Sub Zero drawer refrigeration 736TCI

Laundry Equipment

2 x Miele washer W3035SS

2 x Miele dryer T8005SS

Set of washer and dryers found in guest foyer and crew area

Deck Equipment

Anchor Windlass: 2 x Maxwell hydraulic (port) VWC 4500 Maxwell electric (stbd) VWC 4500

Aft Warping Capstans: 2 x Maxwell VC 3500 24VDC

Anchors: 2 x Artex SS 150 KG

Anchor Chain: 2 x ACCO 1/2" HT 300 FT

Boat Crane and Davits: Nautical Structures 2500 LB

Passerelle: Besenzoni

Swimming Platform: Fixed

Safety, Security, and Fire-Fighting Equipment

CCTV System: 6 x Bosch cameras

Monitors: Sea VU 19" x 5 in pilothouse, Sea VU 17" x 2 on flybridge

Fire Control System: Sea Fire H – Series FM200

Alarms: Maretron

Life Rafts: 2 x Winslow 801506R Life Rings: 3 x Jim Buoy 6WX-24

EPIRBS: 2 x 406 Mhz

Medical Equipment: First aid, AED, Oxygen

Tenders and Toys

Tenders: 2017 14' Novurania inflatable with 70hp outboard

Dive Gear: Brownie's compressor YP25DF-M

Exclusions

Owner's personal effects and artwork. A full inventory of exclusions to be provided at the time of a fully executed Purchase Agreement.

Broker Comments

ANDREA VI is an excellent example of a well-thought-out build by a knowledgeable owner and a team of experienced designers. The build was well executed by the Horizon build team making ANDREA VI a great opportunity to own a pedigree Horizon RP 110'. Her present owner has had the boat since building her. She has been kept in great condition throughout her life.

Исключения

При продаже яхты исключаются личные вещи владельца.

Отказ от ответственности

Компания предоставляет описание судна или яхты добросовестно, но не может гарантировать точность этой информации, а также не ручается за техническое состояние. Покупатель должен проинструктировать своих агентов или оценщиков исследовать представленную информацию более подробно, по собственному желанию. Продажа судна или яхты, изменение цены или снятие с продажи будет происходить без предварительного уведомления.

ФОТОГРАФИИ

Salon



Salon Bar



Salon



Salon



Salon Looking Aft



Dining Area



Dining Area



Dining Area



Hallway to Galley



Galley



Galley



Galley



Galley Dinette



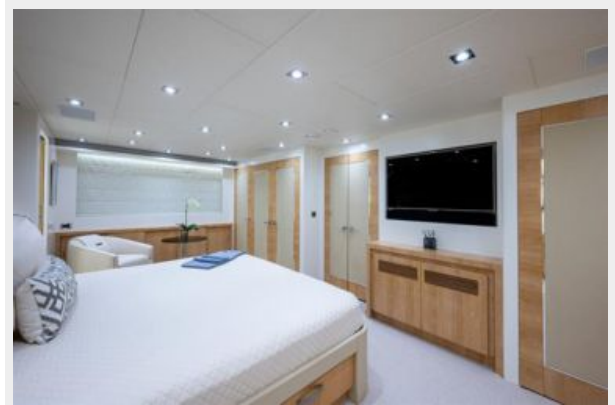
Master Stateroom



Master Stateroom



Master Stateroom



Stairway to Accommodations

Master Bath



Forward Stateroom



Forward Bath



Port Stateroom



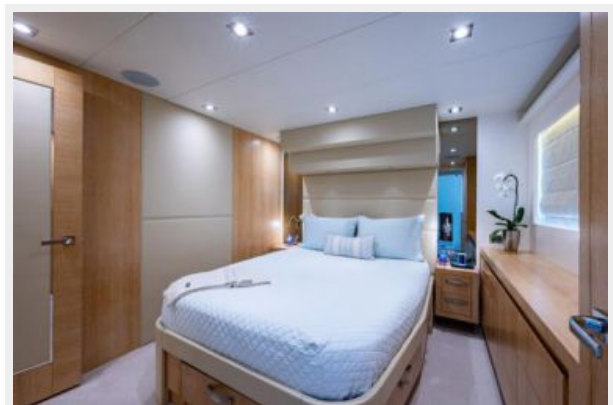
Port Stateroom



Port Bath



Starboard Stateroom



Starboard Stateroom



Starboard Bath



Pilothouse



Pilothouse Settee



Helm



Helm



Pilothouse



Stairway to Flybridge



Flybridge



Flybridge



Flybridge



Flybridge



Flybridge Helm



Flybridge Helm



Flybridge



Flybridge Aft



Flybridge Aft



Flybridge Aft



Foredeck



Foredeck



Side Deck

Foredeck



Aft Deck



Aft Deck



Aft Deck Entrance to Salon



Swim Platform



Swim Platform



Engine Room



Engine Room



Engine Room



Crew Quarters



Crew Quarters



Captain's Cabin



Crew Head



Crew Cabin



Starboard Profile



Bow



Port Profile



Aerial Foredeck/Bow



Port Bow Profile



Stern

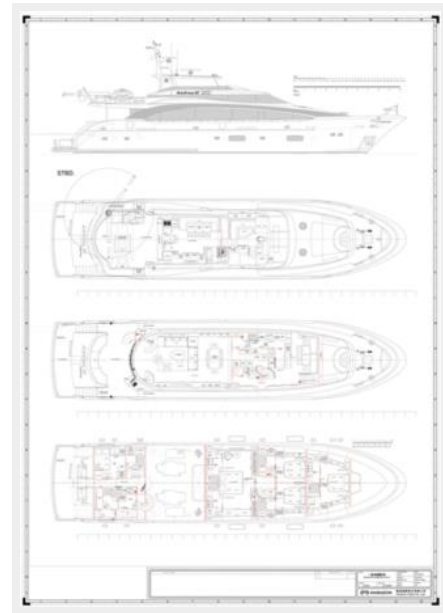


Port Stern Profile



Layout

Starboard Stern Profile



КОНТАКТЫ

Андрей Шестаков (Andrey Shestakov) – ведущий яхтенный брокер отдела продаж яхт и судов компании Shestakov Yacht Sales Inc. Официальный представитель Shestakov Yacht Sales Inc. для русскоговорящих клиентов в центральном офисе компании в Майами/Форт Лодердейл/Флорида/США.

Контактная информация

Email: andrey@shestakovyachtsales.com

Web: shestakovyachtsales.com

Телефоны

Краснодарский край: **+7(918)465-66-44**

США, Майами, Флорида: **+1(954)274-4435**

Время работы

Понедельник – Суббота: **9:00 - 21:00**
EDT

Воскресенье: **Закрето**

Адрес



Harbour Towne Marina, 850 NE 3rd St,
STE 213, Dania, FL 33004