

## PARTNER SHIP — HATTERAS



**Судостроитель:** HATTERAS

**Год постройки:** 1981

**Модель:** Моторная яхта

**Цена:** **ЦЕНА ЯХТЫ ПО ЗАПРОСУ**

**Местонахождение:** United States

**Длина общая:** 48' 0" (14.63m)

**Ширина:** 15' 0" (4.57m)

**Мин. осадка:** 3' 11" (1.19m)

**Макс. осадка:** 3' 11" (1.19m)

**Крейс. скорость:** 9 Kts. (10 MPH)

**Макс. скорость:** 17 Kts. (20 MPH)

Купить **Partner Ship — HATTERAS** а также выбрать подходящую вам яхту из нашего каталога яхт вам поможет опытный яхтенный брокер Андрей Шестаков. На сегодняшний день компания **Shestakov Yacht Sales Inc.** имеет большое количество яхт в **собственном списке продаж**, а также тесно сотрудничает со всеми крупными яхтенными производителями по всему миру.

Для того чтобы купить яхту **Partner Ship — HATTERAS** а также проконсультироваться по любому вопросу связанному с покупкой, продажей, чартером яхт позвоните по телефону **+7(918)465-66-44**.

# ОГЛАВЛЕНИЕ

ОГЛАВЛЕНИЕ	2
ХАРАКТЕРИСТИКИ	6
Обзор	6
Основная информация	6
Размеры	6
Скорость, вместимость и масса	6
Размещение	6
Корпус и палуба	6
Информация о двигателе	6
ПОДРОБНОЕ ОПИСАНИЕ	7
MAIN DESCRIPTION	7
48' Hatteras Overview	7
48' Hatteras Vessel Walkthrough	7
48' Hatteras Accommodations	7
48' Hatteras Salon	7
48' Hatteras Galley	7
48' Hatteras Dining	8
48' Hatteras Master Stateroom	8
48' Hatteras Starboard Aft Guest Stateroom	8
48' Hatteras Forward Guest Stateroom	8
48' Hatteras Laundry	8
48' Hatteras Flybridge	8
48' Hatteras Sundeck	8
48' Hatteras Audio/Visual Equipment	8
48' Hatteras Electronics	8
48' Hatteras Electrical System	9
48' Hatteras Engine/Mechanical Equipment	9
48' Hatteras Deck Equipment	9

48' Hatteras Tender	10
48' Hatteras Safety and Fire Protection	10
48' Hatteras Exclusions	10
48' Hatteras Disclaimer	10
Исключения	11
Отказ от ответственности	11
<b>ФОТОГРАФИИ</b>	<b>12</b>
0_2778279_48_hatteras_starboard_profile	12
1_2778279_48_hatteras_port_forward_profile1	12
2_2778279_48_hatteras_port_forward_profile2	12
3_2778279_48_hatteras_port_aft_profile	12
5_2778279_48_hatteras_starboard_forward_profile2	12
4_2778279_48_hatteras_starboard_forward_profile1	12
6_2778279_48_hatteras_starboard_aft_profile	12
7_2778279_48_hatteras_anchor_windlass	12
8_2778279_48_hatteras_foredeck	13
9_2778279_48_hatteras_foredeck_aft	13
10_2778279_48_hatteras_port_side_deck1	13
11_2778279_48_hatteras_port_side_deck2	13
12_2778279_48_hatteras_starboard_side_deck1	13
13_2778279_48_hatteras_starboard_side_deck2	13
14_2778279_48_hatteras_flybridge_forward	13
15_2778279_48_hatteras_flybridge_aft	13
16_2778279_48_hatteras_flybridge_port	14
17_2778279_48_hatteras_flybridge_starboard	14
18_2778279_48_hatteras_flybridge_helm1	14
19_2778279_48_hatteras_flybridge_helm2	14
20_2778279_48_hatteras_flybirdge_electronics1	14
21_2778279_48_hatteras_flybridge_electronics2	14

22_2778279_48_hatteras_flybridge_helmseats	14
23_2778279_48_hatteras_sundeck_hardtop	14
24_2778279_48_hatteras_sundeck_forward	15
25_2778279_48_hatteras_sundeck_aft	15
26_2778279_48_hatteras_sundeck_port	15
27_2778279_48_hatteras_sundeck_starboard	15
28_2778279_48_hatteras_sundeck_port_seating	15
29_2778279_48_hatteras_sundeck_starboard_seating	15
30_2778279_48_hatteras_sundeck_bar	15
31_2778279_48_hatteras_tender1	15
32_2778279_48_hatteras_tender2	16
33_2778279_48_hatteras_salon_forward	16
34_2778279_48_hatteras_salon_aft	16
35_2778279_48_hatteras_salon_port	16
36_2778279_48_hatteras_salon_starboard	16
37_2778279_48_hatteras_salon_port_seating	16
38_2778279_48_hatteras_salon_starboard_seating	16
39_2778279_48_hatteras_salon_entertainment_center	16
40_2778279_48_hatteras_galley1	17
41_2778279_48_hatteras_galley2	17
42_2778279_48_hatteras_dinette1	17
43_2778279_48_hatteras_dinette2	17
44_2778279_48_hatteras_master_stateroom	17
45_2778279_48_hatteras_master_stateroom_port	17
46_2778279_48_hatteras_master_stateroom_starboard	17
47_2778279_48_hatteras_master_stateroom_forward	17
48_2778279_48_hatteras_master_stateroom_head	18
49_2778279_48_hatteras_forward_guest_stateroom	18
50_2778279_48_hatteras_forward_guest_stateroom_head	18

51_2778279_48_hatteras_port_guest_stateroom	18
52_2778279_48_hatteras_port_guest_stateroom_head	18
53_2778279_48_hatteras_washer_dryer	18
54_2778279_48_hatteras_engine_room	19
55_2778279_48_hatteras_port_main_engine	19
56_2778279_48_hatteras_starboard_main_engine	19
57_2778279_48_hatteras_racor_fuel_filters	19
58_2778279_48_hatteras_stabilizer_system	19
59_2778279_48_hatteras_water_heater	19
60_2778279_48_hatteras_electrical_panel1	19
61_2778279_48_hatteras_electrical_panel2	19
62_2778279_48_hatteras_engine_room_port_electrical_panel	20
63_2778279_48_hatteras_engine_room_starboard_electrical_panel	20
64_2778279_48_hatteras_generator_sound_box	20
65_2778279_48_hatteras_generator	20
66_2778279_48_hatteras_battery_charger	20
67_2778279_48_hatteras_hauled_out	20
<b>КОНТАКТЫ</b>	<b>21</b>
Контактная информация	21
Телефоны	21
Время работы	21
Адрес	21

## ХАРАКТЕРИСТИКИ

### Обзор

Partner Ship is a 1981 48' Hatteras motoryacht in very nice condition. She offers twin Detroit Diesel 8v92 TA 435 HP main engines, Onan 15 kW generator, Naiad stabilizers, some updated electronics, AIS, new anchor windlass, 3 stateroom 3 head layout and a huge sundeck. Partner Ship is currently cruising the Great Loop, but she is available to be seen anytime while her seller cruises north along the East Coast.

### Основная информация

Тип судна: Моторная яхта

Модельный год: 1981

Год постройки: 1981

Страна: United States

### Размеры

Длина общая: 48' 0" (14.63m)

Ширина: 15' 0" (4.57m)

Мин. осадка: 3' 11" (1.19m)

Макс. осадка: 3' 11" (1.19m)

Трапы: 19' 6" (5.94m)

### Скорость, вместимость и масса

Крейс. скорость: 9 Kts. (10 MPH)

Макс. скорость: 17 Kts. (20 MPH)

Водоизмещение: 45000 Pounds

Вместимость воды: 190 Gallons

Вместимость сточного бака: 70 Gallons

Объем топливного бака: 590 Gallons

### Размещение

Всего кают: 3

Всего ком. состава: 3

### Корпус и палуба

Материал корпуса: Fiberglass

### Информация о двигателе

Двигатели: 2

Производитель: Detroit Diesel

Модель: 6v92 TA

Тип двигателя: Inboard

Тип топлива: Diesel

---

## ПОДРОБНОЕ ОПИСАНИЕ

---

### MAIN DESCRIPTION

---

Partner Ship is a 1981 48' Hatteras motoryacht in very nice condition. She offers twin Detroit Diesel 8v92 TA 435 HP main engines, Onan 15 kW generator, Naiad stabilizers, some updated electronics, AIS, new anchor windlass, 3 stateroom 3 head layout and a huge sundeck. Partner Ship is currently cruising the Great Loop, but she is available to be seen anytime while her seller cruises north along the East Coast.

### 48' Hatteras Overview

---

Partner Ship is a 1981 48' Hatteras motoryacht in very nice condition. She offers twin Detroit Diesel 6v92 TA 435 HP main engines, Onan 15 kW generator, Naiad stabilizers, some updated electronics, AIS, new anchor windlass, 3 stateroom 3 head layout and a huge sundeck. Partner Ship is currently cruising the Great Loop, but she is available to be seen anytime while her seller cruises north along the East Coast.

### 48' Hatteras Vessel Walkthrough

---

From the hard top covered sundeck, you can walk out either side deck to the foredeck, step up three molded-in steps to the flybridge or step down into the salon. Once inside the salon, you will find a sofa to port, two lounge chairs and an ottoman to starboard and an entertainment center aft. Walk aft to find a washer-dryer in a cabinet to starboard, a guest stateroom with single berths to starboard, guest head to port and then the full beam master stateroom with ensuite head and enclosed shower aft. The down galley is port forward and the dinette is starboard forward. Walk further forward into another guest stateroom with an ensuite head. Engine room access is via lift up stairs from the galley-dinette to the salon.

The headroom in the salon is 6'7", 6'5" in the forward guest stateroom and ensuite head, 6'3" to 7'7" in the galley, 6'4" in the starboard guest stateroom, 6'2" in the port guest head, 6'3" in the master stateroom, 6'3" in the master stateroom head, 6'5" on the sundeck and 7'1" on the flybridge. The master stateroom berth is 6'7" long, the starboard guest stateroom berths are 6' long and the forward guest stateroom berths are 6'7" long.

### 48' Hatteras Accommodations

---

Partner Ship offers a full beam master stateroom aft with a centerline queen size berth and an ensuite head with an enclosed shower; a guest stateroom starboard aft with two single berths and a guest head to port; and a guest stateroom forward with over/under single berths and an ensuite head. The dinette across from the galley converts into a double size berth also.

### 48' Hatteras Salon

---

The salon offers 2 lounge chairs, ottoman and a table to starboard, a sofa to port, entertainment center aft, opening side windows with screens and blinds and carpet.

### 48' Hatteras Galley

---

The galley is down and port forward.

- Kelvinator refrigerator/freezer
- Oster microwave oven
- Princess 3-burner electric cooktop and oven
- Stainless steel sink
- Storage cabinets and drawers
- Dry storage

---

## 48' Hatteras Dining

---

Dining space is available at the dinette across from the galley.

---

## 48' Hatteras Master Stateroom

---

The full beam master stateroom aft offers a centerline queen size berth, carpet, fan, transom hatch, 4 portlights, curtains, nightstands, reading lights, storage drawers, hanging locker and an ensuite head with enclosed shower.

---

## 48' Hatteras Starboard Aft Guest Stateroom

---

The starboard aft guest stateroom offer offset single berths, 1 portlight, curtains, reading lights, hanging locker, storage drawers and carpet. The guest head is to port.

---

## 48' Hatteras Forward Guest Stateroom

---

The forward guest stateroom offers over/under single berths, 2 portlights, reading lights, hanging locker, storage cabinets and drawers, anchor chain locker access and an ensuite head.

---

## 48' Hatteras Laundry

---

- Frigidaire stack washer/dryer

---

## 48' Hatteras Flybridge

---

The flybridge offers bound carpet over non-skid deck, aluminum framed bimini, Radar arch, storage under the helm, 2 Pompanette helmseats, fan, L-shaped seating with storage starboard aft, benchseat port aft and a full Strataglass enclosure.

---

## 48' Hatteras Sundeck

---

The sundeck offers a hardtop, Strataglass enclosure aft, opening side windows, teak & glass wing door to each side deck, bound carpet over non-skid deck, 3 wicker chairs, sofa and 2 tables, Weber 1200 BBQ grill, Blackstone flattop grill, coffee table with storage, sun shades, transom gate storage cabinet/bar with Norcold refrigerator/freezer forward, teak & glass door to the salon and 3 molded-in steps to the flybridge.

---

## 48' Hatteras Audio/Visual Equipment

---

- KVH Tracvision M2 satellite TV system
- KVH Tracvision receiver in the salon
- Vizio flat screen TV in the salon
- Bose Wave radio/CD player in the salon
- Pioneer AVH-200EX stereo/DVD Sat Ready player on the flybridge
- Kenwood speakers on the flybridge

---

## 48' Hatteras Electronics

---

- Furuno Radar
- Furuno Navnet multi-function display
- Furuno FM3000 VHF



- Furuno FCV-600L fish finder
- Garmin 8612xsv multi-function display (2020)
- Garmin VHF (2020)
- Garmin GHC20 Reactor autopilot (2020)
- Danforth Constellation magnetic compass
- Tackform tablet holder
- Aiphone intercom system
- Boston clock and barometer in the salon

---

## 48' Hatteras Electrical System

---

- Onan MDJF 15 kW generator with approximately 3,046 hours
- Mastervolt Chargemaster 12/50-3 battery charger
- Jefferson Electric transformer
- 12 vdc and 110 vac outlets on the flybridge
- 50 amp shore power cord
- Guest battery switches

---

## 48' Hatteras Engine/Mechanical Equipment

---

- Twin Detroit Diesel 6v92 TA 435 HP main engines with approximately 3,018 hours
- Morse engine controls
- Glendinning synchronizer
- Perko sea strainers
- Hynautic hydraulic steering system
- Fuel manifold
- Racor 1000FG fuel filter with vacuum for each main engine
- Racor 500FG fuel filter for the generator
- Naiad 202 stabilizer system (Serviced and seals replaced in 2020)
- Bennett trim tabs
- Cruisair reverse cycle air conditioning/heating system (2 X 16,000 BTU units and 2 X 10,000 BTU units)
- Attwood 10.5 gallon water heater
- Mansfield electric heads
- Spare propellers

---

## 48' Hatteras Deck Equipment

---

- Maxwell BWF0758 anchor windlass with foot controls and a remote control on the flybridge (2020)
- Lewmar Delta 88 LB anchor

- Fortress FX-23 anchor
- Stainless steel rails forward, teak cap rails on stainless steel stanchions with a single lifeline on each side
- Stainless steel fender racks
- Stainless steel deck hardware
- Non-skid decks
- Foredeck storage boxes
- Windshield cover
- Boarding gate on each side
- Dock water connection
- Washdown
- 3 Marquipt boarding ladders
- Fiberglass swimplatform
- Hull bottom painted in 2020

---

### 48' Hatteras Tender

- Mercury 350 11'2" RIB tender (2015)
- Tohatsu M18E2 18 HP 2 stroke outboard (2000)
- Dinghy Caddy davits

---

### 48' Hatteras Safety and Fire Protection

- Kidde engine room fire suppression system
- Fire extinguishers
- Kidde smoke detector
- Kidde carbon monoxide detector
- Rule bilge pumps
- Video security system with cameras aft and in the engine room

---

### 48' Hatteras Exclusions

- Sellers' personal belongings
- Tools
- Element flat screen TV in the master stateroom

---

### 48' Hatteras Disclaimer

The Company offers the details of this vessel in good faith but cannot guarantee or warrant the accuracy of this information nor warrant the condition of the vessel. A buyer should instruct his agents, or his surveyors, to investigate such details as the buyer desires validated. This vessel is offered subject to prior sale, price change, or withdrawal without notice.

---

## Исключения

---

При продаже яхты исключаются личные вещи владельца.

## Отказ от ответственности

---

Компания предоставляет описание судна или яхты добросовестно, но не может гарантировать точность этой информации, а также не ручается за техническое состояние. Покупатель должен проинструктировать своих агентов или оценщиков исследовать представленную информацию более подробно, по собственному желанию. Продажа судна или яхты, изменение цены или снятие с продажи будет происходить без предварительного уведомления.

## ФОТОГРАФИИ

0\_2778279\_48\_hatteras\_starboard\_profile



1\_2778279\_48\_hatteras\_port\_forward\_profile1



2\_2778279\_48\_hatteras\_port\_forward\_profile2



3\_2778279\_48\_hatteras\_port\_aft\_profile



5\_2778279\_48\_hatteras\_starboard\_forward\_profile2



4\_2778279\_48\_hatteras\_starboard\_forward\_profile1



6\_2778279\_48\_hatteras\_starboard\_aft\_profile



7\_2778279\_48\_hatteras\_anchor\_windlass



8\_2778279\_48\_hatteras\_foredeck



9\_2778279\_48\_hatteras\_foredeck\_aft



10\_2778279\_48\_hatteras\_port\_side\_deck1



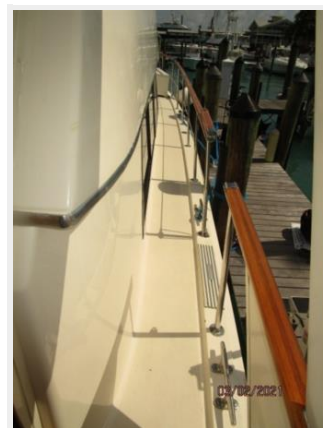
11\_2778279\_48\_hatteras\_port\_side\_deck2



12\_2778279\_48\_hatteras\_starboard\_side\_deck1



13\_2778279\_48\_hatteras\_starboard\_side\_deck2



14\_2778279\_48\_hatteras\_flybridge\_forward



15\_2778279\_48\_hatteras\_flybridge\_aft



16\_2778279\_48\_hatteras\_flybridge\_port



17\_2778279\_48\_hatteras\_flybridge\_starboard



18\_2778279\_48\_hatteras\_flybridge\_helm1



19\_2778279\_48\_hatteras\_flybridge\_helm2



20\_2778279\_48\_hatteras\_flybridge\_electronics1



21\_2778279\_48\_hatteras\_flybridge\_electronics2



22\_2778279\_48\_hatteras\_flybridge\_helmseats



23\_2778279\_48\_hatteras\_sundeck\_hardtop



24\_2778279\_48\_hatteras\_sundeck\_forward



25\_2778279\_48\_hatteras\_sundeck\_aft



26\_2778279\_48\_hatteras\_sundeck\_port



27\_2778279\_48\_hatteras\_sundeck\_starboard



28\_2778279\_48\_hatteras\_sundeck\_port\_seating



29\_2778279\_48\_hatteras\_sundeck\_starboard\_seating



30\_2778279\_48\_hatteras\_sundeck\_bar



31\_2778279\_48\_hatteras\_tender1



32\_2778279\_48\_hatteras\_tender2



33\_2778279\_48\_hatteras\_salon\_forward



34\_2778279\_48\_hatteras\_salon\_aft



35\_2778279\_48\_hatteras\_salon\_port



36\_2778279\_48\_hatteras\_salon\_starboard



37\_2778279\_48\_hatteras\_salon\_port\_seating



38\_2778279\_48\_hatteras\_salon\_starboard\_seating



39\_2778279\_48\_hatteras\_salon\_entertainment\_center





40\_2778279\_48\_hatteras\_galley1



41\_2778279\_48\_hatteras\_galley2



42\_2778279\_48\_hatteras\_dinette1



43\_2778279\_48\_hatteras\_dinette2



44\_2778279\_48\_hatteras\_master\_stateroom



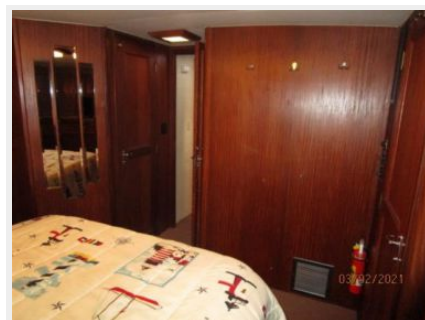
45\_2778279\_48\_hatteras\_master\_stateroom\_port



46\_2778279\_48\_hatteras\_master\_stateroom\_starboard



47\_2778279\_48\_hatteras\_master\_stateroom\_forward



48\_2778279\_48\_hatteras\_master\_stateroom\_head



49\_2778279\_48\_hatteras\_forward\_guest\_stateroom



50\_2778279\_48\_hatteras\_forward\_guest\_stateroom\_head



51\_2778279\_48\_hatteras\_port\_guest\_stateroom



52\_2778279\_48\_hatteras\_port\_guest\_stateroom\_head



53\_2778279\_48\_hatteras\_washer\_dryer



54\_2778279\_48\_hatteras\_engine\_room



55\_2778279\_48\_hatteras\_port\_main\_engine



56\_2778279\_48\_hatteras\_starboard\_main\_engine



57\_2778279\_48\_hatteras\_racor\_fuel\_filters



58\_2778279\_48\_hatteras\_stabilizer\_system



59\_2778279\_48\_hatteras\_water\_heater



60\_2778279\_48\_hatteras\_electrical\_panel1



61\_2778279\_48\_hatteras\_electrical\_panel2



62\_2778279\_48\_hatteras\_engine\_room\_port\_electrical\_panel 63\_2778279\_48\_hatteras\_engine\_room\_starboard\_electrical\_panel



64\_2778279\_48\_hatteras\_generator\_sound\_box



65\_2778279\_48\_hatteras\_generator



66\_2778279\_48\_hatteras\_battery\_charger



67\_2778279\_48\_hatteras\_hauled\_out



## КОНТАКТЫ

---

Андрей Шестаков (Andrey Shestakov) – ведущий яхтенный брокер отдела продаж яхт и судов компании Shestakov Yacht Sales Inc. Официальный представитель Shestakov Yacht Sales Inc. для русскоговорящих клиентов в центральном офисе компании в Майами/Форт Лодердейл/Флорида/США.

### Контактная информация

---

Email:  
[andrey@shestakovyachtsales.com](mailto:andrey@shestakovyachtsales.com)

Web: [shestakovyachtsales.com](http://shestakovyachtsales.com)

### Телефоны

---

Краснодарский край: +7(918)465-66-44

США, Майами, Флорида: +1(954)274-4435

### Время работы

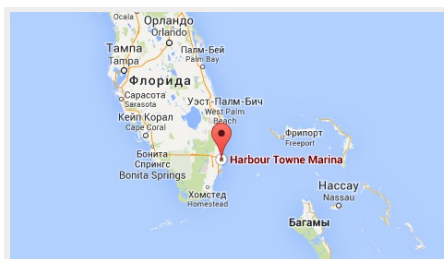
---

Понедельник – Суббота: 9:00 - 21:00  
EDT

Воскресенье: **Закрито**

### Адрес

---



Harbour Towne Marina, 850 NE 3rd St,  
STE 213, Dania, FL 33004