

76 ENCLOSED BRIDGE SIX PACK — VIKING



Builder: VIKING

Year Built: 2015

Model: Sport Fisherman

Price: PRICE ON APPLICATION

Location: United States

LOA: 76' 0" (23.16m)

Beam: 20' 3" (6.17m)

Max Draft: 5' 6" (1.68m)

Cruise Speed: 30 Kts. (35 MPH)

Max Speed: 40 Kts. (46 MPH)

Our experienced yacht broker, Andrey Shestakov, will help you choose and buy a yacht that best suits your needs 76 Enclosed Bridge SIX PACK — VIKING from our catalogue. Presently, at Shestakov Yacht Sales Inc., we have a wide variety of yachts available on our sale's list. We also work in close contact with all the big yacht manufacturers from all over the world.

If you would like to buy a yacht 76 Enclosed Bridge SIX PACK — VIKING or would like help answering any questions concerning purchasing, selling or chartering a yacht, please call +1(954)274-4435

TABLE OF CONTENTS

TABLE OF CONTENTS	2
SPECIFICATIONS	8
Overview	8
Basic Information	8
Dimensions	8
Speed, Capacities and Weight	8
Accommodations	8
Hull and Deck Information	8
Engine Information	8
DETAILED INFORMATION	9
Description	9
Salon	10
Salon Day Head	10
Galley	10
Dinette	11
Master Stateroom	11
Master Stateroom Head	11
Forward VIP Stateroom	12
Forward VIP Stateroom Head	12
Starboard Stateroom	12
Starboard Head	12
Port Stateroom	13
Port Jack & Jill Head	13
Companionway	13
Enclosed Bridge	13
Aft Bridge Station	14
Cockpit	14
Bow	14

Engine Room	15
Tower	15
Helm Station & Electronics	15
Exclusions	16
Disclaimer	16
PHOTOS	17
76_viking_six_pack_profiles_6	17
76_viking_six_pack_profiles_8	17
76_viking_six_pack_profiles_3	17
76_viking_six_pack_profiles_32	17
76_viking_six_pack_profiles_15	17
76_viking_six_pack_profiles_16	17
76_viking_six_pack_profiles_29	18
76_viking_six_pack_profiles_14	18
76_viking_six_pack_profiles_18	18
76_viking_six_pack_profiles_31	18
76_viking_six_pack_profiles_30	18
76_viking_six_pack_profiles_27	18
76_viking_six_pack_profiles_2	19
76_viking_six_pack_profiles_11	19
76_viking_six_pack_cockpit_9	19
76_viking_six_pack_cockpit_8	19
76_viking_six_pack_cockpit_6	19
76_viking_six_pack_cockpit_7	19
76_viking_six_pack_cockpit_5	20
76_viking_six_pack_cockpit_3	20
76_viking_six_pack_cockpit_2	20
76_viking_six_pack_cockpit_18	20
76_viking_six_pack_cockpit_17	20

76_viking_six_pack_cockpit_16	20
76_viking_six_pack_cockpit_15	21
76_viking_six_pack_cockpit_14	21
76_viking_six_pack_cockpit_13	21
76_viking_six_pack_cockpit_12	21
76_viking_six_pack_cockpit_11	21
76_viking_six_pack_cockpit_10	21
76_viking_six_pack_cockpit_1	22
76_viking_six_pack_cockpit_4	22
76_viking_six_pack_enclosed_flybridge_aft_deck_2	22
76_viking_six_pack_enclosed_flybridge_aft_deck_3	22
76_viking_six_pack_enclosed_flybridge_aft_deck_1	22
76_viking_six_pack_enclosed_flybridge_aft_deck_4	22
76_viking_six_pack_enclosed_flybridge_aft_deck_6	23
76_viking_six_pack_enclosed_flybridge_aft_deck_7	23
76_viking_six_pack_enclosed_flybridge_aft_deck_5	23
76_viking_six_pack_enclosed_flybridge_8	23
76_viking_six_pack_enclosed_flybridge_9	23
76_viking_six_pack_enclosed_flybridge_10	23
76_viking_six_pack_enclosed_flybridge_7	24
76_viking_six_pack_enclosed_flybridge_5	24
76_viking_six_pack_enclosed_flybridge_4	24
76_viking_six_pack_enclosed_flybridge_6	24
76_viking_six_pack_enclosed_flybridge_3	24
76_viking_six_pack_enclosed_flybridge_2	24
76_viking_six_pack_enclosed_flybridge_1	25
76_viking_six_pack_salon_1	25
76_viking_six_pack_salon_2	25
76_viking_six_pack_salon_6	25

76_viking_six_pack_salon_4	25
76_viking_six_pack_salon_3	25
76_viking_six_pack_salon_7	26
76_viking_six_pack_salon_5	26
76_viking_six_pack_salon_8	26
76_viking_six_pack_salon_9	26
76_viking_six_pack_dinette_5	26
76_viking_six_pack_dinette_4	26
76_viking_six_pack_dinette_2	27
76_viking_six_pack_galley_4	27
76_viking_six_pack_galley_3	27
76_viking_six_pack_galley_2	27
76_viking_six_pack_galley_1	27
76_viking_six_pack_pantry_4	27
76_viking_six_pack_pantry_2	28
76_viking_six_pack_pantry_1	28
76_viking_six_pack_utility_room_2	28
76_viking_six_pack_pantry_3	28
76_viking_six_pack_utility_room_1	28
76_viking_six_pack_laundry_1	28
76_viking_six_pack_master_stateroom_1	29
76_viking_six_pack_master_stateroom_4	29
76_viking_six_pack_master_stateroom_2	29
76_viking_six_pack_master_stateroom_3	29
76_viking_six_pack_master_stateroom_7	29
76_viking_six_pack_master_stateroom_6	29
76_viking_six_pack_master_stateroom_5	30
76_viking_six_pack_master_head_5	30
76_viking_six_pack_master_head_4	30

76_viking_six_pack_master_head_3	30
76_viking_six_pack_master_head_2	30
76_viking_six_pack_master_head_1	30
76_viking_six_pack_forward_stateroom_3	31
76_viking_six_pack_forward_stateroom_2	31
76_viking_six_pack_forward_stateroom_1	31
76_viking_six_pack_forward_stateroom_6	31
76_viking_six_pack_forward_stateroom_5	31
76_viking_six_pack_forward_stateroom_4	31
76_viking_six_pack_forward_head_2	32
76_viking_six_pack_forward_head_1	32
76_viking_six_pack_starboard_guest_stateroom_1	32
76_viking_six_pack_starboard_guest_stateroom_4	32
76_viking_six_pack_starboard_guest_stateroom_3	32
76_viking_six_pack_starboard_guest_stateroom_2	32
76_viking_six_pack_starboard_guest_stateroom_5	33
76_viking_six_pack_starboard_guest_head_2	33
76_viking_six_pack_starboard_guest_head_1	33
76_viking_six_pack_fwd_port_guest_stateroom_1	33
76_viking_six_pack_fwd_port_guest_stateroom_3	33
76_viking_six_pack_fwd_port_guest_stateroom_2	33
76_viking_six_pack_mid_port_guest_stateroom_4	34
76_viking_six_pack_mid_port_guest_stateroom_3	34
76_viking_six_pack_mid_port_guest_stateroom_1	34
76_viking_six_pack_mid_port_guest_stateroom_2	34
76_viking_six_pack_port_guest_head_4	34
76_viking_six_pack_port_guest_head_3	34
76_viking_six_pack_port_guest_head_2	35
76_viking_six_pack_port_guest_head_1	35

76_viking_six_pack_engine_room_9	35
76_viking_six_pack_engine_room_1	35
76_viking_six_pack_engine_room_3	35
76_viking_six_pack_engine_room_2	35
76_viking_six_pack_engine_room_4	36
76_viking_six_pack_engine_room_7	36
76_viking_six_pack_engine_room_8	36
76_viking_six_pack_engine_room_5	36
76_viking_six_pack_engine_room_6	36
76_viking_six_pack_engine_room_11	36
76_viking_six_pack_engine_room_10	37
76_viking_six_pack_tower_4	37
76_viking_six_pack_tower_3	37
76_viking_six_pack_tower_2	37
76_viking_six_pack_tower_1	37
CONTACTS	38
Contact details	38
Telephones	38
Office hours	38
Address	38

SPECIFICATIONS

Overview

Basic Information

Category: Sport Fisherman

Model Year: 2015

Year Built: 2015

Country: United States

Dimensions

LOA: 76' 0" (23.16m)

Beam: 20' 3" (6.17m)

Max Draft: 5' 6" (1.68m)

Speed, Capacities and Weight

Cruise Speed: 30 Kts. (35 MPH)

Max Speed: 40 Kts. (46 MPH)

Displacement: 136000 Pounds

Water Capacity: 425 Gallons

Holding Tank: 257 Gallons

Fuel Capacity: 3174 Gallons

Accommodations

Total Cabins: 5

Total Heads: 4

Hull and Deck Information

Hull Material: Fiberglass

Engine Information

Engines: 2

Manufacturer: MTU

Model: M94 16V2000

Engine Type: Inboard

Fuel Type: Diesel

DETAILED INFORMATION

Description

New Listing

2015 Viking 76' EB

WILL BE ON DISPLAY AT THE PALM BEACH BOAT SHOW

MARCH 25TH-28TH

Here is a great opportunity to own a very well equipped 76' Viking EB by a four time Viking owner. This late model Viking 76' EB has been meticulously maintained since new, offering a list of upgrades and logged maintenance records over the past few years of ownership (Please See List Below). She offers a factory installed SeaKeeper 26, Hydraulic Outriggers, Teak Cockpit, Palm Beach Tower, 2600HP MTU Engines, and much more. The interior decor offers a contemporary finish with dark satin wood throughout. This 76' Viking features a 5 stateroom 4 head layout with a salon dayhead. Her 20' full beam master stateroom really separates her from the competition in its class. This 76' Viking is a perfect example of an elegant Sportfish combined with the amenities you would find on a Motoryacht.

HIGHLIGHTS

- Davit Completely Serviced 1800lb 1/2021
- All New Interior Runners 1/2021
- Hydraulic Outriggers Polished 2/2021
- New Tender & Fighting Chair Cover 2/2021
- Sanded Teak Cockpit and Mezzanine 2/2021
- New Salon 65" TV 1/2021
- Hull Repainted 1/2020
- Boot Stripe Repainted 1/2020
- New Nonskid 1/2020
- New Interior Carpet 1/2020
- Fighting Chair Revarnished (Release) 1/2020
- New Condenser For Step Box & Mezz (2) Freezers 1/2020
- New Salon Ice Maker 1/2020
- Replaced Chillers 1/2020 & 1/2018
- (2) New A/C Pumps 1/2020
- Black Mask Repainted 8/2020
- New Membranes for Water Maker 8/2020

- New Trim Tab Actuators 8/2020
- Bottom Paint/Prop Speed 8/2020
- New HD6 KVH 11/2020
- Garmin in Aft Station & Tower 12/2020
- Seakeeper #26 Serviced 2019 (Run Hours 1704, Sea Hours 1047)
- All New Turbos 2018
- New Battery Chargers 2018
- New Batteries (AGM) 2018
- 2k Service Completed 12/2018
- Upgraded 3rd Fuel Tank (Totaling 3174)
- 17' Maverick Tender (2016 85HP 2Stroke)

Salon

- Electric Sliding Door
- Overhead teak handrail
- 65" TV Samsung
- Carpet with runner
- Custom Amtico flooring by Salon Door
- Teak valances
- Central Vacuum
- L-Shape Sofa (Custom Rod Storage Underneath)
- Coffee Table (Storage Underneath)
- Day head
- Ice Maker
- Liquor Cabinet
- Breaker Panel
- Blinds

Salon Day Head

- Custom amtico flooring
- Satin nickel faucet
- Granite Counter Top
- Hammered nickel sink
- Dometic Toilet
- Mirror
- Window (Cockpit view)

Galley

- Kitchen Aid Oven
- Kenmore Trash compactor
- Miele (4) Electric Burner Cook Top
- LG Microwave
- Under-mount stainless steel sink
- Amtico flooring
- Backsplash mirror
- Cabinets
- Granite countertop
- Crown molding over galley and dinette areas
- (2) Subzero Freezers
- (4) Subzero Refrigeration
- Granite Counter Top Island
- (3) Bar Stools (Reupholstered 1/2020)
- Walk-In Pantry (Wine Cooler)
- Dog House (A/V System and Additional Storage)

Dinette

- Teak table
- U-Shape Seating (Storage Underneath)
- Bar/Ice Maker
- Carpet with runner

Master Stateroom

- Full Beam Master
- King Size Bed (Storage Underneath)
- (2) Night Stands
- (2) Hanging Closets
- (2) 4-stack chest of drawers
- Central Vacuum
- 41" Flat Screen TV Samsung
- Custom seating area (Starboard Side)
- Work Desk (Port Side)
- Carpet with Runner
- Port/Stbd Hull Windows
- A/C Controller

Master Stateroom Head

- Sink
- Granite Counter Top
- Custom Amtico Floor
- Walk-in Shower
- Dometic Toilet
- Wallpaper
- Mirror with Medicine Cabinet

- Shower fixtures in satin nickel
- Towel bars and rings in brushed nickel

Forward VIP Stateroom

- Queen Mattress (Storage Underneath)
- Bow Thruster & Floor Storage Bilge Access
- 41" Flat-screen TV
- Hanging Closet
- Window Escape Hatch
- Cabinet Storage
- A/C Control
- Carpet with runner

Forward VIP Stateroom Head

- Sink
- Granite Counter Top
- Mirror Above Sink (Medicine Cabinet)
- Walk-in Shower
- Cabinet Storage under sink
- Custom Amtico flooring
- Satin nickel shower fixtures
- Amtico Flooring
- Dometic Toilet

Starboard Stateroom

- Top/Bottom Bunks
- (2) Hanging Closets
- (2) Pull Out Drawers
- 26" Flat-screen TV
- Central Vacuum
- A/C Control
- Carpet with runner

Starboard Head

- Sink
- Granite Countertop
- Mirror with Medicine Cabinet
- Storage Under Cabinet
- Dometic Toilet
- Walk-in Shower
- Amtico Flooring

Port Stateroom

- Queen Berth
- Left/Right Nightstands
- Storage Under Bed
- Hanging Closet
- Central Vacuum
- (2) Pull Out Drawers
- 26" Flat-screen TV
- Carpet with runner
- A/C Control

Port Jack & Jill Head

- Sink
- Granite Counter Top
- Storage Under Counter Top
- Dometic Toilet
- Sink
- Mirror with Medicine Cabinet
- Amtico Flooring
- Walk-In Shower

Companionway

- Carpet with runner
- Bilge Storage
- Fresh Water Tank Access
- Separate Ariston Washer/Dryer
- Central Vacuum
- Linen Closet

Enclosed Bridge

- Helm
- Captain Chair
- Port/Stbd Lounge Seating
- (2) Sub Zero Refrigerators
- L-Shape Sofa with Storage underneath
- Coffee Table
- Window Hatch above Captains Chair
- Cabinets Storage Throughout
- 34" Samsung TV
- (2) JL Audio Speakers
- Central Vac System
- A/C Controller
- Carpet with Runner

Aft Bridge Station

- Garmin 8212
- Hydraulic Outrigger Controls
- Bow Thruster Control
- Garmin Autopilot GHC20 Control
- Fusion Head Unit
- Engine Ignition
- Steering
- Throttles
- Compass
- STBD Mezz Seating
- (2) JL Audio Speakers
- Spot Light
- (10) Rod Holders
- Teaser Reels Miya Epoch US9HD

Cockpit

- Mezzanine Seating
- Mezzanine Refrigerated Step Box, (2) Freezers, (2) Storage Boxes, Tackle Drawer, Eskimo Ice Chipper Dump into Port box
- Teak Cockpit, Teak Covering Boards, Teak Mezzanine
- Release Fighting Chair
- (6) Rod Holders
- STBD in Floor Live Well & Fish Box
- Port Fish Box
- Transom Tuna Tubes
- Seakeeper #26
- (2) 100amp Glendennings
- (4) 12V Electric Reel Outlets
- Cockpit Oil Pump Out System
- (4) Speakers & (2) Sub JL Audio System
- F/W & R/W Flush
- Port/STBD Gaff Storage Under Covering Boards
- Crushed ice machine with discharge in port mezzanine box
- (2) Rod holders in each haunch (for a total of 4)
- Engine Room Access

Bow

- Windlass
- Faux Teak Toe Rail
- Bow Rail
- Anchor Pulpit
- 17' Maverick
- 1800lb Davit
- Black Mask
- Nonskid

Engine Room

- (2) M94 16V2000 2600HP MTU Engines
- (2) 32KW Generators Port (2847) STBD (2722)
- Fuel Polish System
- 1600GPD Watermaker with Reverse Osmosis
- (2) 48K BTU Chillers
- (3) Dometic Condensers
- Oil Change System
- (2) A/C Pumps
- (2) Toolboxes
- Awlgrip brass thru-hulls with sea strainers in it, and forward bilges
- Hydraulic Pump System (Bow Thruster, Steering, Davit)
- Tuna Tubes Pump System
- Halon Fire System
- 110V outlet on aft bulkhead at entranceway
- Clear acrylic shaft log access covers
- (2) Isoboosters

Tower

- Garmin 8212
- VHF
- Engine Controls
- Bow Thruster
- Auto Pilot
- Spreader Lights (2) Fwd & (1) Fwd
- KHV HD6
- Seating

Helm Station & Electronics

- (4) 22" KEP Screen that display (Engine Room Cameras, TV, FLIR M625, NOBELTEC, FURUNO NAVNET, RADAR)
- (1) Garmin 8624
- Garmin Auto Pilot GHC20
- Furuno Radar (Model #DRS25A)
- (1) Furuno Transducer CA50BL-12HR 2kw 50Khz
- (1) Furuno Transducer CA200B-8B 2kw 200Khz
- (1) Aimar PM411C-LWM Ultrawide
- (1) Garmin 010-00958-00 Chirp Sounder
- (2) VHF IC M604
- RD-33
- Fusion UD75 Headunit
- Spot Light Control
- Seakeeper Control
- Emergency Control
- Octoplex System
- Viking Rudder/Trim Indicator

- (2) Engine Displays
- Bow Thruster Control
- Dometic Ice Chipper Control (Dumps in Port Side Mezz)
- KVH HD6
- SAT Phone V3
- FLIR M625

Exclusions

Owner's personal belongings.

Disclaimer

The Company offers the details of this vessel or yacht in good faith but cannot guarantee or warrant the accuracy of this information nor warrant the condition of the vessel. A buyer should instruct his representatives, agents, or his surveyors, to investigate such details as the buyer desires validated. This vessel or yacht is offered subject to prior sale, price change, or withdrawal without notice.

PHOTOS

76_viking_six_pack_profiles_8



76_viking_six_pack_profiles_6



76_viking_six_pack_profiles_3



76_viking_six_pack_profiles_32



76_viking_six_pack_profiles_16



76_viking_six_pack_profiles_15



76_viking_six_pack_profiles_29



76_viking_six_pack_profiles_14



76_viking_six_pack_profiles_18



76_viking_six_pack_profiles_31



76_viking_six_pack_profiles_30



76_viking_six_pack_profiles_27



76_viking_six_pack_profiles_2



76_viking_six_pack_profiles_11



76_viking_six_pack_cockpit_9



76_viking_six_pack_cockpit_8



76_viking_six_pack_cockpit_7



76_viking_six_pack_cockpit_6



76_viking_six_pack_cockpit_5



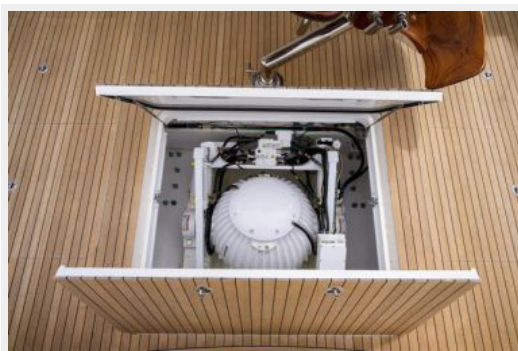
76_viking_six_pack_cockpit_3



76_viking_six_pack_cockpit_2



76_viking_six_pack_cockpit_18



76_viking_six_pack_cockpit_17



76_viking_six_pack_cockpit_16



76_viking_six_pack_cockpit_14



76_viking_six_pack_cockpit_15



76_viking_six_pack_cockpit_13



76_viking_six_pack_cockpit_12



76_viking_six_pack_cockpit_11



76_viking_six_pack_cockpit_10



76_viking_six_pack_cockpit_1



76_viking_six_pack_cockpit_4



76_viking_six_pack_enclosed_flybridge_aft_deck_2

76_viking_six_pack_enclosed_flybridge_aft_deck_3



76_viking_six_pack_enclosed_flybridge_aft_deck_1 76_viking_six_pack_enclosed_flybridge_aft_deck_4



76_viking_six_pack_enclosed_flybridge_aft_deck_6



76_viking_six_pack_enclosed_flybridge_aft_deck_7



76_viking_six_pack_enclosed_flybridge_aft_deck_5



76_viking_six_pack_enclosed_flybridge_8



76_viking_six_pack_enclosed_flybridge_9



76_viking_six_pack_enclosed_flybridge_10



76_viking_six_pack_enclosed_flybridge_7



76_viking_six_pack_enclosed_flybridge_5



76_viking_six_pack_enclosed_flybridge_4



76_viking_six_pack_enclosed_flybridge_6



76_viking_six_pack_enclosed_flybridge_3



76_viking_six_pack_enclosed_flybridge_2



76_viking_six_pack_enclosed_flybridge_1



76_viking_six_pack_salon_1



76_viking_six_pack_salon_2



76_viking_six_pack_salon_6



76_viking_six_pack_salon_4



76_viking_six_pack_salon_3



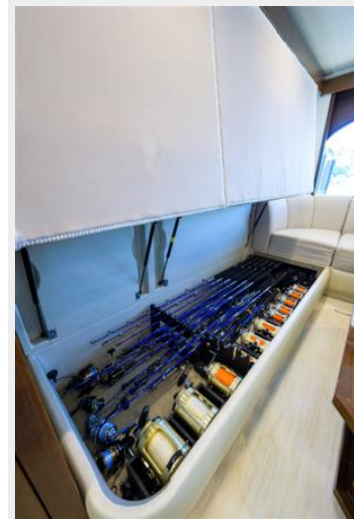
76_viking_six_pack_salon_7



76_viking_six_pack_salon_5



76_viking_six_pack_salon_8



76_viking_six_pack_salon_9



76_viking_six_pack_dinette_5



76_viking_six_pack_dinette_4



76_viking_six_pack_dinette_2



76_viking_six_pack_galley_4



76_viking_six_pack_galley_3



76_viking_six_pack_galley_2



76_viking_six_pack_galley_1



76_viking_six_pack_pantry_4



76_viking_six_pack_pantry_2



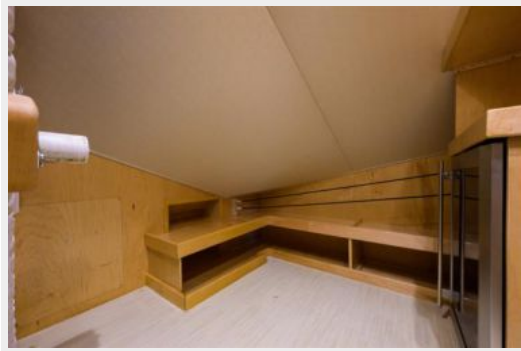
76_viking_six_pack_pantry_1



76_viking_six_pack_utility_room_2



76_viking_six_pack_pantry_3



76_viking_six_pack_utility_room_1



76_viking_six_pack_laundry_1



76_viking_six_pack_master_stateroom_1



76_viking_six_pack_master_stateroom_4



76_viking_six_pack_master_stateroom_2



76_viking_six_pack_master_stateroom_3



76_viking_six_pack_master_stateroom_7



76_viking_six_pack_master_stateroom_6



76_viking_six_pack_master_stateroom_5



76_viking_six_pack_master_head_5



76_viking_six_pack_master_head_4



76_viking_six_pack_master_head_3



76_viking_six_pack_master_head_2



76_viking_six_pack_master_head_1



76_viking_six_pack_forward_stateroom_3



76_viking_six_pack_forward_stateroom_2



76_viking_six_pack_forward_stateroom_1



76_viking_six_pack_forward_stateroom_6



76_viking_six_pack_forward_stateroom_5



76_viking_six_pack_forward_stateroom_4



76_viking_six_pack_forward_head_2



76_viking_six_pack_forward_head_1



76_viking_six_pack_starboard_guest_stateroom_1 76_viking_six_pack_starboard_guest_stateroom_4



76_viking_six_pack_starboard_guest_stateroom_3

76_viking_six_pack_starboard_guest_stateroom_2



76_viking_six_pack_starboard_guest_stateroom_5



76_viking_six_pack_starboard_guest_head_2



76_viking_six_pack_starboard_guest_head_1



76_viking_six_pack_fwd_port_guest_stateroom_1



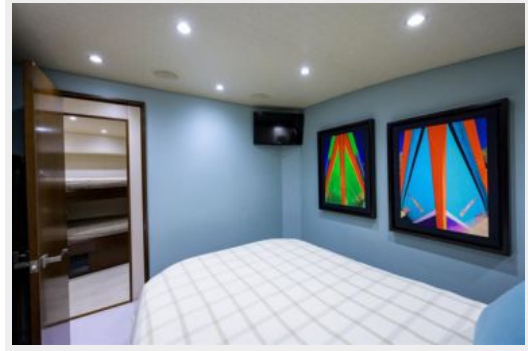
76_viking_six_pack_fwd_port_guest_stateroom_3



76_viking_six_pack_fwd_port_guest_stateroom_2



76_viking_six_pack_mid_port_guest_stateroom_4 76_viking_six_pack_mid_port_guest_stateroom_3



76_viking_six_pack_mid_port_guest_stateroom_1

76_viking_six_pack_mid_port_guest_stateroom_2



76_viking_six_pack_port_guest_head_4



76_viking_six_pack_port_guest_head_3



76_viking_six_pack_port_guest_head_2



76_viking_six_pack_port_guest_head_1



76_viking_six_pack_engine_room_9



76_viking_six_pack_engine_room_1



76_viking_six_pack_engine_room_3



76_viking_six_pack_engine_room_2



76_viking_six_pack_engine_room_4



76_viking_six_pack_engine_room_7



76_viking_six_pack_engine_room_8



76_viking_six_pack_engine_room_5



76_viking_six_pack_engine_room_6



76_viking_six_pack_engine_room_11



76_viking_six_pack_engine_room_10



76_viking_six_pack_tower_4



76_viking_six_pack_tower_3



76_viking_six_pack_tower_2



76_viking_six_pack_tower_1



CONTACTS

Andrey Shestakov, leading yacht broker of the sales department of Shestakov Yacht Sales Inc. Shestakov Yacht Sales Inc., the official representative of the Miami/Fort Lauderdale FL headquarters.

Contact details

Email: andrey@shestakovyachtsales.com

Web: shestakovyachtsales.com/en/

Telephones

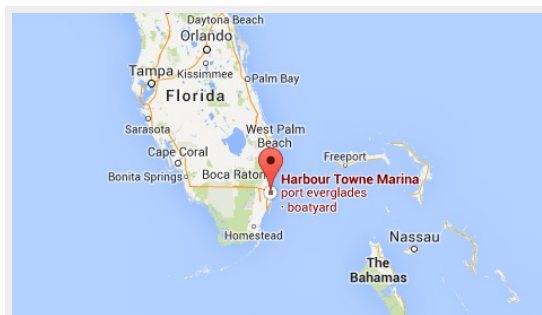
USA: +1(954)274-4435

Office hours

Monday – Saturday: 9:00 - 21:00 EDT

Sunday: **closed**

Address



Harbour Towne Marina, 850 NE 3rd St,
STE 213, Dania, FL 33004