

REEL JANIE — MERRITT BOAT WORKS



Builder: MERRITT BOAT WORKS

Year Built: 1996

Model: Sport Fisherman

Price: PRICE ON APPLICATION

Location: United States

LOA: 75' 0" (22.86m)

Beam: 19' 8" (5.99m)

Max Draft: 5' 8" (1.73m)

Cruise Speed: 27 Kts. (31 MPH)

Max Speed: 33 Kts. (38 MPH)

Our experienced yacht broker, Andrey Shestakov, will help you choose and buy a yacht that best suits your needs **REEL JANIE — MERRITT BOAT WORKS** from our catalogue. Presently, at Shestakov Yacht Sales Inc., we have a wide variety of yachts available on our sale's list. We also work in close contact with all the big yacht manufacturers from all over the world.

If you would like to buy a yacht **REEL JANIE — MERRITT BOAT WORKS** or would like help answering any questions concerning purchasing, selling or chartering a yacht, please call **+1(954)274-4435**

TABLE OF CONTENTS

TABLE OF CONTENTS	2
SPECIFICATIONS	5
Basic Information	5
Dimensions	5
Speed, Capacities and Weight	5
Accommodations	5
Hull and Deck Information	5
Engine Information	6
DETAILED INFORMATION	7
Deck and Hull	7
Cockpit and Fishing Equipment	7
Galley	7
Salon	7
Master Stateroom	8
Guest Stateroom Port	8
Flybridge	8
Tower	8
Laundry	9
Crew Quarters	9
Electrical Equipment	9
Mechanical Equipment	9
Safety Equipment	9
Exclusions	10
Exclusions	10
Disclaimer	10
PHOTOS	11
6791043_20180925115114919_1_XLARGE	11
6791043_20180925115120883_1_XLARGE	11

6791043_20180925115126440_1_XLARGE	11
6791043_20180925115131990_1_XLARGE	11
6791043_20180925115137872_1_XLARGE	11
6791043_20180925115220081_1_XLARGE	11
6791043_20180925115224900_1_XLARGE	12
6791043_20180925115229865_1_XLARGE	12
6791043_20180925115249103_1_XLARGE	12
6791043_20180925115255924_1_XLARGE	12
6791043_20180925115238399_1_XLARGE	12
6791043_20180925115153300_1_XLARGE	12
6791043_20180925115201390_1_XLARGE	13
6791043_20180925115208940_1_XLARGE	13
6791043_20180925114854323_1_XLARGE	13
6791043_20180925114842509_1_XLARGE	13
6791043_20180925114926523_1_XLARGE	14
6791043_20180925114908992_1_XLARGE	14
6791043_20180925114938088_1_XLARGE	14
6791043_20180925115305631_1_XLARGE	14
6791043_20180925115335470_1_XLARGE	14
6791043_20180925115356526_1_XLARGE	14
6791043_20180925115408595_1_XLARGE	15
6791043_20180925115417819_1_XLARGE	15
6791043_20180925120116679_1_XLARGE	15
6791043_20180925120203720_1_XLARGE	15
6791043_20180925120242806_1_XLARGE	15
6791043_20180925120150643_1_XLARGE	15
6791043_20180925120139986_1_XLARGE	16
6791043_20180925120015915_1_XLARGE	16
6791043_20180925120229347_1_XLARGE	16

6791043_20180925120041354_1_XLARGE	16
6791043_20180925120127376_1_XLARGE	17
6791043_20180925120054384_1_XLARGE	17
6791043_20180925115753763_1_XLARGE	17
6791043_20180925115839687_1_XLARGE	17
6791043_20180925115908634_1_XLARGE	18
6791043_20180925115822568_1_XLARGE	18
6791043_20180925115936377_1_XLARGE	18
6791043_20180925120005014_1_XLARGE	18
6791043_20180925115725126_1_XLARGE	19
6791043_20180925115640963_1_XLARGE	19
6791043_20180925115655140_1_XLARGE	19
6791043_20180925115711930_1_XLARGE	19
6791043_20180925115448924_1_XLARGE	20
6791043_20180925115430270_1_XLARGE	20
6791043_20180925114954997_1_XLARGE	20
6791043_20180925115039313_1_XLARGE	20
6791043_20180925115618835_1_XLARGE	21
CONTACTS	22
Contact details	22
Telephones	22
Office hours	22
Address	22

SPECIFICATIONS

Basic Information

Category: Sport Fisherman

Model Year: 1996

Year Built: 1996

Country: United States

Dimensions

LOA: 75' 0" (22.86m)

Beam: 19' 8" (5.99m)

Max Draft: 5' 8" (1.73m)

Speed, Capacities and Weight

Cruise Speed: 27 Kts. (31 MPH)

Max Speed: 33 Kts. (38 MPH)

Displacement: 130000 Pounds

Water Capacity: 450 Gallons

Fuel Capacity: 2850 Gallons

Accommodations

Total Cabins: 3

Total Heads: 3

Hull and Deck Information

Hull Material: Fiberglass

Engine Information

Engines: 2

Manufacturer: MTU

Model: 16V2000 M90

Engine Type: Inboard

Fuel Type: Diesel

DETAILED INFORMATION

Deck and Hull

- Muir Windlass- Atlantic 4000 Hydraulic
- Stainless Steel anchor, 100 LBS.
- 60' High Tensile 1/2" Anchor Chain - 250" 3 Strand Nylon Rope
- Aqualuma Underwater Lights: (4) Across Transom, (2) Straight Down

Cockpit and Fishing Equipment

- (2) 24V LP Outlets
- (2) 12V Kite Reel Outlets
- Eskimo Ice Machine
- Bluewater Rocket Launcher
- (2) Custom Merritt Freezers
- (2) Custom Merritt Refrigerators
- Live Well Sump Box For Deckwell
- (2) In Deck Fish Boxes
- (3) Tackle Drawers
- Large Storage Area
- Ambient Air In Cockpit Overhead
- 36' Rupp Triple Spreader Outriggers
- (2) Miya Epc US-9 Teaser Reels In Bridge Overhead
- Ample Rod Storage In Bridge Seats and Salon Sofa

Galley

- Miele Convection Oven
- Sharp Carousel Microwave
- (2) Merritt Custom Refrigerators
- (2) Merritt Custom Freezers
- Hoshizaki Ice maker
- Frigidaire Wine Cooler
- Kitchenaid Compactor
- Miele Dishwasher

Salon

- Entertainment Center

- Large U- shaped sofa
- Table
- (2) occasional chairs
- End table
- Rod storage

Master Stateroom

- King berth
- Sofa
- (2) Side tables
- Carpet throughout
- (2) speakers
- Ensuite head and shower

Guest Stateroom Port

- Twin lower bunks
- Ensuite head and shower

Flybridge

- Furuno 25 KW - 6' Array
- Furuno 12 KW - 4' Array
- Simrad AP50
- Furuno Nav Net 3D Blackbox
- Garmin 5212
- Nobletec - Mac Base
- Furuno DFF1 - Furuno 1KW Chirp (Depth/Video Sounders)
- (2) Furuno RD-33 Multi-Display
- ACR Spotlight
- (4) KEP 19" monitors
- (2) Icom VHF's (M502)
- Furuno AIS
- Fusion IP600
- Bow Thruster Controls

Tower

- Ritchie Compass

- Icom M502 VHF
- Furuno MFD-8 Monitor

Laundry

- Miele Stacked Front load Washer and Dryer

Crew Quarters

- Upper/lower twin berths
- Access to engine room
- Ensuite head and shower

Electrical Equipment

- (2) Kilo Pak Generators
- AGM batteries
- (2) 50 AMP Shore power
- 12V, 24V DC
- 110V, 220V AC

Mechanical Equipment

- Cruisair Chilled Water System (3)
- Sea Keeper Stabilized
- (2) Watermakers Inc. Watermakers (WMS 1200)
- Bow Thruster
- Koop Nautic Steering System
- (6) Racor Fuel Separators/Filtration
- Headhunter Fresh Water System:
- Rule Bilge Water System
- JenAir Air Compressor

Safety Equipment

- Fire Suppression System
- Kidde Smoke Detector
- Halon Fixed FM System
- Givins 6-man Life Rafts

- Life Ring
- (2) ACR GPIRBS
- Flares

Exclusions

- Owners personal items

Exclusions

Owner's personal belongings.

Disclaimer

The Company offers the details of this vessel or yacht in good faith but cannot guarantee or warrant the accuracy of this information nor warrant the condition of the vessel. A buyer should instruct his representatives, agents, or his surveyors, to investigate such details as the buyer desires validated. This vessel or yacht is offered subject to prior sale, price change, or withdrawal without notice.

PHOTOS

6791043_20180925115114919_1_XLARGE



6791043_20180925115120883_1_XLARGE



6791043_20180925115126440_1_XLARGE



6791043_20180925115131990_1_XLARGE



6791043_20180925115137872_1_XLARGE



6791043_20180925115220081_1_XLARGE



6791043_20180925115224900_1_XLARGE



6791043_20180925115229865_1_XLARGE



6791043_20180925115249103_1_XLARGE



6791043_20180925115255924_1_XLARGE



6791043_20180925115238399_1_XLARGE



6791043_20180925115153300_1_XLARGE



6791043_20180925115201390_1_XLARGE



6791043_20180925115208940_1_XLARGE



6791043_20180925114854323_1_XLARGE

6791043_20180925114842509_1_XLARGE



6791043_20180925114926523_1_XLARGE



6791043_20180925114908992_1_XLARGE



6791043_20180925114938088_1_XLARGE



6791043_20180925115305631_1_XLARGE



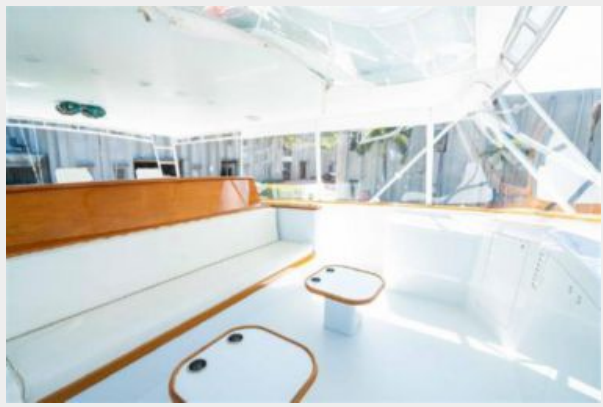
6791043_20180925115335470_1_XLARGE



6791043_20180925115356526_1_XLARGE



6791043_20180925115408595_1_XLARGE



6791043_20180925115417819_1_XLARGE



6791043_20180925120116679_1_XLARGE



6791043_20180925120203720_1_XLARGE



6791043_20180925120242806_1_XLARGE



6791043_20180925120150643_1_XLARGE



6791043_20180925120139986_1_XLARGE



6791043_20180925120015915_1_XLARGE



6791043_20180925120229347_1_XLARGE



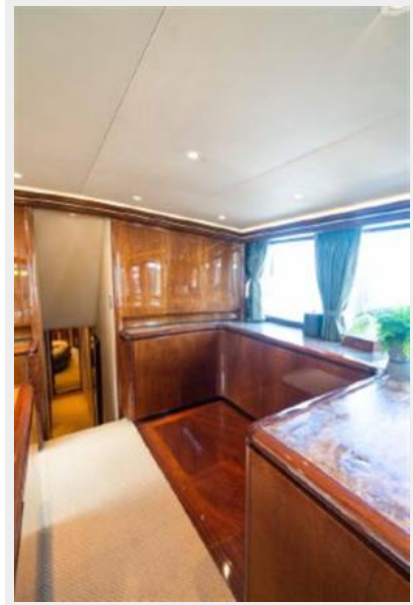
6791043_20180925120041354_1_XLARGE



6791043_20180925120127376_1_XLARGE



6791043_20180925120054384_1_XLARGE



6791043_20180925115753763_1_XLARGE



6791043_20180925115839687_1_XLARGE



6791043_20180925115908634_1_XLARGE



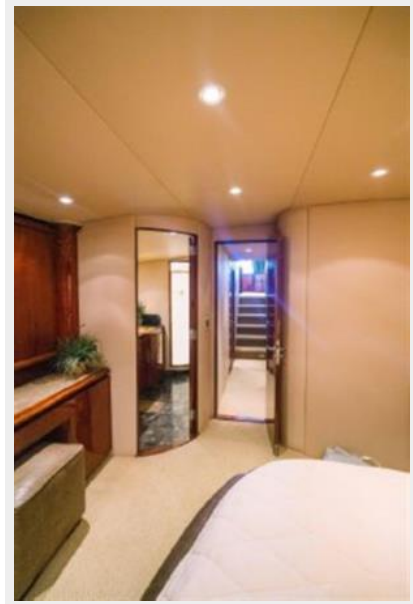
6791043_20180925115822568_1_XLARGE



6791043_20180925115936377_1_XLARGE



6791043_20180925120005014_1_XLARGE



6791043_20180925115725126_1_XLARGE



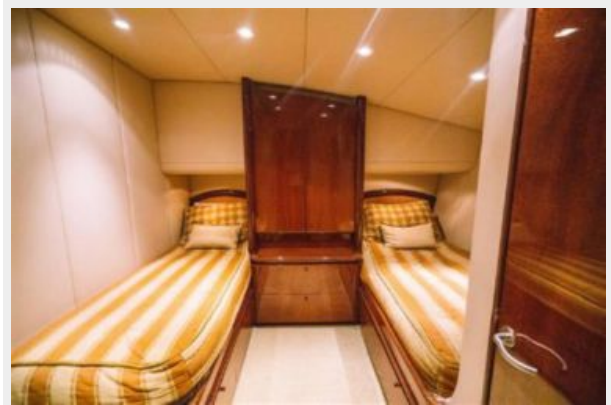
6791043_20180925115640963_1_XLARGE



6791043_20180925115655140_1_XLARGE



6791043_20180925115711930_1_XLARGE



6791043_20180925115448924_1_XLARGE



6791043_20180925115430270_1_XLARGE



6791043_20180925114954997_1_XLARGE



6791043_20180925115039313_1_XLARGE



6791043_20180925115618835_1_XLARGE



CONTACTS

Andrey Shestakov, leading yacht broker of the sales department of Shestakov Yacht Sales Inc. Shestakov Yacht Sales Inc., the official representative of the Miami/Fort Lauderdale FL headquarters.

Contact details

Email: andrey@shestakovyachtsales.com

Web: shestakovyachtsales.com/en/

Telephones

USA: +1(954)274-4435

Office hours

Monday – Saturday: **9:00 - 21:00** EDT

Sunday: **closed**

Address



Harbour Towne Marina, 850 NE 3rd St,
STE 213, Dania, FL 33004