

65 FLYBRIDGE — MONTE CARLO YACHTS



Судостроитель:
MONTE CARLO YACHTS

Год постройки: 2016

Модель: Моторная яхта

Цена: **ЦЕНА ЯХТЫ ПО ЗАПРОСУ**

Местонахождение: United States

Длина общая: 65' 0" (19.81m)

Ширина: 17' 1" (5.21m)

Макс. осадка: 5' 1" (1.55m)

Крейс. скорость: 26 Kts. (30 MPH)

Макс. скорость: 30 Kts. (35 MPH)

Купить 65 Flybridge — MONTE CARLO YACHTS а также выбрать подходящую вам яхту из нашего каталога яхт вам поможет опытный яхтенный брокер Андрей Шестаков. На сегодняшний день компания Shestakov Yacht Sales Inc. имеет большое количество яхт в собственном списке продаж, а также тесно сотрудничает со всеми крупными яхтенными производителями по всему миру.

Для того чтобы купить яхту 65 Flybridge — MONTE CARLO YACHTS а также проконсультироваться по любому вопросу связанному с покупкой, продажей, чартером яхт позвоните по телефону **+7(918)465-66-44**.

ОГЛАВЛЕНИЕ

ОГЛАВЛЕНИЕ	2
ХАРАКТЕРИСТИКИ	8
Основная информация	8
Размеры	8
Скорость, вместимость и масса	8
Размещение	8
Корпус и палуба	8
Информация о двигателе	8
ПОДРОБНОЕ ОПИСАНИЕ	9
Description	9
Specifications	9
Aft Deck	9
Bow	10
Galley	10
Salon	10
Master Stateroom	11
VIP Stateroom	11
Guest Stateroom	11
Flybridge	12
Helm Stations	12
Engine Room/ Mechanical	12
Performance	13
Исключения	13
Отказ от ответственности	13
ФОТОГРАФИИ	14
7750362_20210209094814236_1_XLARGE	14
7750362_20210209094820465_1_XLARGE	14
7750362_20210209094823987_1_XLARGE	14

7750362_20210209094826953_1_XLARGE	14
7750362_20210209094830059_1_XLARGE	14
7750362_20210209094833151_1_XLARGE	14
7750362_20210209094903209_1_XLARGE	15
7750362_20210209094907177_1_XLARGE	15
7750362_20210209094909958_1_XLARGE	15
7750362_20210209094913046_1_XLARGE	15
7750362_20210209094915806_1_XLARGE	15
7750362_20210209094918218_1_XLARGE	15
7750362_20210209094921211_1_XLARGE	15
7750362_20210209095332197_1_XLARGE	15
7750362_20210209095334224_1_XLARGE	16
7750362_20210209095337696_1_XLARGE	16
7750362_20210209095345044_1_XLARGE	16
7750362_20210209095352197_1_XLARGE	16
7750362_20210209095359043_1_XLARGE	16
7750362_20210209095405928_1_XLARGE	16
7750362_20210209095413521_1_XLARGE	16
7750362_20210209095420759_1_XLARGE	16
7750362_20210209095556292_1_XLARGE	17
7750362_20210209095600310_1_XLARGE	17
7750362_20210209095605703_1_XLARGE	17
7750362_20210209095613593_1_XLARGE	17
7750362_20210209100212470_1_XLARGE	17
7750362_20210209100222619_1_XLARGE	17
7750362_20210209100231865_1_XLARGE	17
7750362_20210209100241106_1_XLARGE	17
7750362_20210209100251138_1_XLARGE	18
7750362_20210209100300725_1_XLARGE	18

7750362_20210209100310778_1_XLARGE	18
7750362_20210209100323741_1_XLARGE	18
7750362_20210209100332670_1_XLARGE	18
7750362_20210209100341801_1_XLARGE	18
7750362_20210209100350392_1_XLARGE	18
7750362_20210209100358497_1_XLARGE	18
7750362_20210209100406475_1_XLARGE	19
7750362_20210209100415539_1_XLARGE	19
7750362_20210209100358497_1_XLARGE	19
7750362_20210209100406475_1_XLARGE	19
7750362_20210209100415539_1_XLARGE	19
7750362_20210209100424384_1_XLARGE	19
7750362_20210209100432391_1_XLARGE	19
7750362_20210209110227946_1_XLARGE	19
7750362_20210209110236067_1_XLARGE	20
7750362_20210209110245306_1_XLARGE	20
7750362_20210209110257847_1_XLARGE	20
7750362_20210209110714803_1_XLARGE	20
7750362_20210209110723774_1_XLARGE	20
7750362_20210209110733342_1_XLARGE	20
7750362_20210209110741860_1_XLARGE	20
7750362_20210209112635297_1_XLARGE	20
7750362_20210209112638877_1_XLARGE	21
7750362_20210209112644041_1_XLARGE	21
7750362_20210209112651692_1_XLARGE	21
7750362_20210209112700973_1_XLARGE	21
7750362_20210209112710339_1_XLARGE	21
7750362_20210209112718791_1_XLARGE	21
7750362_20210209112726560_1_XLARGE	21

7750362_20210209112735240_1_XLARGE	21
7750362_20210209112743508_1_XLARGE	22
7750362_20210209112754612_1_XLARGE	22
7750362_20210209112806092_1_XLARGE	22
7750362_20210209112813726_1_XLARGE	22
7750362_20210209112825971_1_XLARGE	22
7750362_20210209112833986_1_XLARGE	22
7750362_20210209112841962_1_XLARGE	22
7750362_20210209112849223_1_XLARGE	22
7750362_20210209112857238_1_XLARGE	23
7750362_20210209112904679_1_XLARGE	23
7750362_20210209112912888_1_XLARGE	23
7750362_20210209112920475_1_XLARGE	23
7750362_20210209112927620_1_XLARGE	23
7750362_20210209112935356_1_XLARGE	23
7750362_20210209113724287_1_XLARGE	23
7750362_20210209113736652_1_XLARGE	23
7750362_20210209113746972_1_XLARGE	24
7750362_20210209113756439_1_XLARGE	24
7750362_20210209115950504_1_XLARGE	24
7750362_20210209115953423_1_XLARGE	24
7750362_20210209120004812_1_XLARGE	24
7750362_20210209120012685_1_XLARGE	24
7750362_20210209120020114_1_XLARGE	24
7750362_20210209120028149_1_XLARGE	24
7750362_20210209120036501_1_XLARGE	25
7750362_20210209120043860_1_XLARGE	25
7750362_20210209120051618_1_XLARGE	25
7750362_20210209120100919_1_XLARGE	25

7750362_20210209120330993_1_XLARGE	25
7750362_20210209120337909_1_XLARGE	25
7750362_20210209120344603_1_XLARGE	25
7750362_20210209120351809_1_XLARGE	25
7750362_20210209121011210_1_XLARGE	26
7750362_20210209121032697_1_XLARGE	26
7750362_20210209121041282_1_XLARGE	26
7750362_20210209121054040_1_XLARGE	26
7750362_20210209121103493_1_XLARGE	26
7750362_20210209121112739_1_XLARGE	26
7750362_20210209121123077_1_XLARGE	26
7750362_20210209121132845_1_XLARGE	26
7750362_20210209121142602_1_XLARGE	27
7750362_20210209121151790_1_XLARGE	27
7750362_20210209095800879_1_XLARGE	27
7750362_20210209095810304_1_XLARGE	27
7750362_20210209095820258_1_XLARGE	27
7750362_20210209095830752_1_XLARGE	27
7750362_20210209095838800_1_XLARGE	27
7750362_20210209095850676_1_XLARGE	27
7750362_20210209095858732_1_XLARGE	28
7750362_20210209095906971_1_XLARGE	28
7750362_20210209095915631_1_XLARGE	28
7750362_20210209095924227_1_XLARGE	28
7750362_20210209095931670_1_XLARGE	28
КОНТАКТЫ	29
Контактная информация	29
Телефоны	29
Время работы	29

Адрес

29

ХАРАКТЕРИСТИКИ

Основная информация

Тип судна: Моторная яхта

Модельный год: 2016

Год постройки: 2016

Страна: United States

Размеры

Длина общая: 65' 0" (19.81m)

Ширина: 17' 1" (5.21m)

Макс. осадка: 5' 1" (1.55m)

Скорость, вместимость и масса

Крейс. скорость: 26 Kts. (30 MPH)

Макс. скорость: 30 Kts. (35 MPH)

Размещение

Всего кают: 3

Всего ком. состава: 3

Корпус и палуба

Материал корпуса: Fiberglass

Информация о двигателе

Двигатели: 2

Производитель: MAN

Модель: D2868LE436

Тип двигателя: Inboard

Тип топлива: Diesel

ПОДРОБНОЕ ОПИСАНИЕ

Description

- SeaKeeper 9 Gyro
- 1200 MAN Diesel Engines with only 850 Hours
- Xenta Joystick with Bow and Stern Thrusters
- Gorgeous Italian Design
- Carbon Fiber Hardtop with Retractable Sunroof
- Teak Sole Throughout Cockpit, Foredeck, and Flybridge
- Miele Appliance Package in Galley
- Raymarine Electronics Including Dual Screens on Upper and Lower Helm Stations
- Summer Galley on the Flybridge With Grill, Sink, Ice Maker, and Fridge.
- Passerelle and Hydraulic Swim Platform
- 3 Staterooms, 3 Heads + 2 Crew
- Upgraded JL Audio and Fusion Stereo with 3 Zones
- Spacious Engine Room

Specifications

- Beam: 17' 1"
- Hull Material: Fiberglass
- Max Draft: 5' 1"
- Fuel Tank: 1 x 925|gallon
- Fresh Water: 1 x 198|gallon
- Cabins: 3
- Heads: 3
- Dry Weight: 70,000 lb.

Aft Deck

- The aft deck is one of 3 outdoor entertaining areas and easily accommodates up to 6 adults around the beautiful teak table.
- The cockpit is equipped with heavy, stainless hardware and electric mooring winches.
- Just forward of the winches are 2 large storage lockers for fenders, hoses, etc.
- As you make your way aft down to the hydraulic swim platform you will find that moving about the transom is extremely easy with wide access to port and starboard. The 65 is also equipped with a passerelle which makes boarding a breeze.
- The transom door allows access to the crew cabin for 2 as well as the washer and dryer combo unit.

- Just forward of the crew cabin is the spacious engine room.
- In 2020 there was a brand-new Fusion stereo system installed with 3 separate zones including the cockpit, flybridge, and bow. All-new speakers, head unit, subwoofers, and amps were part of the installation.

Bow

- The 17'1" beam allows for huge walk-around side decks and the high gunwales make it extremely safe to move about for line handling and entertaining.
- Huge bow seating area can either be configured as 2 large sun pads or you can flip up the backrests to make comfortable upright seating. She has a subtle bow rail that does not inhibit the amazing views.
- There is ambient LED pop-up lighting that really makes the space inviting at night while the carbon fiber poles and awning create a comfortable space in the heat of the day.
- Forward of the seating area is a recessed deck to allow handling of the ground tackle and access to the fender storage and chain locker.
- Just aft of the bow seating area is the Portuguese bridge with boarding doors to port and starboard just aft.

Galley

- The galley on the 65 is aft and located just inside the stainless, bi-folding doors. They open to create a beautiful open-concept layout that flows nicely from the cockpit all the way through to the salon.
- As you enter the cabin the galley is immediate to port and the inside dining area is to starboard. The dining table folds open and chairs can be added to create space for 5 or 6 adults.
- The galley countertops act as a nice bar area when the salon doors are fully opened.
- She has an exceptionally large fridge with a separate freezer located just below the forward countertop.
- The stainless sink basin and Newform faucet are located to port next to the 4-burner Miele induction cooktop.
- There is storage above and below the sink as well as on the front side of the bar.
- The full-size Miele dishwasher is conveniently located just below the cooktop.
- Aft of the fridge is the Miele convection oven and microwave combo unit.

Salon

- The first thing you will notice when stepping into the salon is the uninhibited, 365-degree view through the large windows.
- The u-shaped sofa in the salon is extremely comfortable and runs along the port side below

the massive window.

- Just across from the sofa is the custom china and silverware storage area as well as the pop-up television that rotates 180 degrees so you can watch in the salon or from the aft deck.
- Forward of the TV is the controller for the Bose surround system as well as the satellite TV control box.

Master Stateroom

- The full-beam master is located aft as you make your way down the steps from the lower helm station.
- Upon entering the master, you will find the master bath located immediately to port. The master bathroom features beautiful granite counters with built-in basin sinks and beautiful chrome faucets. The separate stall shower has a gorgeous mosaic tile with a waterfall shower head and a wand. There is no lack of storage with 3 cabinets below and shelf storage above the vanity.
- Continuing into the master you will find no lack of Italian design with several different types of leather and fabric lining the walls, headboard, and cabinetry. The large mirror makes the space feel much larger and has a vanity area below for doing make-up.
- The round, hull-side windows are unique to MCY and have 4 opening portholes to either side. Just below the waterline windows on the starboard side is a comfortable chaise lounge. To port is additional storage space with his and hers lockers just forward.
- The island, king berth is situated on the centerline with a flat-screen TV mounted on the forward bulkhead.

VIP Stateroom

- The VIP on the 65 is located forward and features a large, island queen berth situated on the centerline of the boat. The natural light flows nicely through this space with 2 opening portholes to port and starboard.
- The dark wood is accented nicely with light and dark gray leather and fabric throughout. Just forward of the berth is an incredibly unique headboard with ambient lighting behind.
- Lockers are located to port and starboard with additional storage compartments on either side of the bed.
- The en-suite head is aft and to port and features many of the same furnishings that are in the master bath including a large stall shower, beautiful basin sink and faucet, and an electric Tecma head.
- The Samsung flat-screen TV is located on the aft bulkhead and the DVD player is mounted in the starboard locker.

Guest Stateroom

- The guest stateroom is located to starboard just as you come down the companionway and features 2 twin berths. This stateroom also has no shortage of storage area with a nice size locker forward and additional compartments next to the berth.
- The head is en-suite but also acts as the day head for the vessel with a separate access from the companionway.
- The acrylic wrap-around shower door allows for much more usable space in the head.

Flybridge

- The teak steps on the port side of the cockpit lead up to the spacious flybridge.
- The bridge features yet another teak table for entertaining as well as additional seating along the port side.
- The upper helm is located to starboard and features twin Raymarine screens with much of the same equipment you have at the lower helm.
- The hardtop is carbon fiber and has a retractable sunroof that tucks away nicely when open.
- The teak sole continues from the cockpit around the bow and up to the flybridge.
- Aft on the flybridge is a large area surrounding the summer galley which features an electric grill, ice maker, and fridge.
- At the base of the galley, the unit is a large storage area with additional storage located beneath all the flybridge seating.
- The new JL Audio/Fusion stereo features 5 new speakers and 1 large subwoofer on the flybridge.

Helm Stations

- The lower helm is situated on the starboard side of the vessel and has easy access to the side deck through the pantograph door.
- The 65 is equipped with a Boning system that controls and monitors all the ship's systems including tankage, battery status, AC and DC monitoring, lighting, etc. All engine data is displayed on the screens at the lower helm station with separate MAN.
- The electronics are all Raymarine and include 2 plotters at both helm stations, autopilot, radar, and a tri data display.
- She is equipped with a SeaKeeper gyro stabilizer that reduces roll and makes for a comfortable ride in most sea conditions.
- The 1200 MAN diesels are controlled by electronic throttles and the vessel is also outfitted with a Xenta joystick that incorporates both bow and stern thrusters with the drives.
- Both helm stations are also equipped with a Quick chain counter, Raymarine VHF radios, and trim tab indicators along with miscellaneous switchers for lighting, etc.

Engine Room/ Mechanical

- The engine room is accessed through the transom door. The crew cabin for 2 is also located aft of the engine room and can accommodate 2 With a separate head/shower and nice basin sink.
- Directly across from the crew cabin door is access to the Water Makers Inc Desalination system and the hydraulics for the passerelle, swim platform and trim tabs are all easily accessible.
- The 65 is outfitted with 2 Glendinning electric shore power reels for the 2 50-amp shore power chords.
- Just forward of the cable reels is the LG washer/dryer combo unit.
- There is also a swim ladder with teak steps stowed away here that mounts to the swim platform.
- As you make your way forward you will find the 23 kW Kohler generator.
- Just below the generator is the SeaKeeper 9 gyro stabilizer.
- To port, you will find 2 CruisAir AC chillers each with a 36,000 BTU capacity.
- The Master volt battery chargers are located on the starboard side and aft bulkhead in the engine room.
- The 1200 MAN diesels have 850 hours are rated at 2300 RPM.
- On the forward bulkhead is the main electrical panel as well as a second Raymarine camera to monitor the engine room.

Performance

- 1200 RPM - 22 GPH - 11.5 Knots
- 1600 RPM - 46 GPH - 15 Knots
- 1750 RPM - 60 GPH - 19 Knots
- 2000 RPM - 80 GPH - 25 Knots
- 2360 RPM - 124 GPH - 31 Knots

Исключения

При продаже яхты исключаются личные вещи владельца.

Отказ от ответственности

Компания предоставляет описание судна или яхты добросовестно, но не может гарантировать точность этой информации, а также не ручается за техническое состояние. Покупатель должен проинструктировать своих агентов или оценщиков исследовать представленную информацию более подробно, по собственному желанию. Продажа судна или яхты, изменение цены или снятие с продажи будет происходить без предварительного уведомления.

ФОТОГРАФИИ

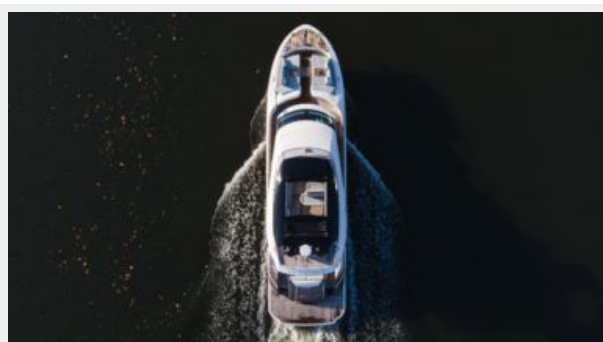
7750362_20210209094814236_1_XLARGE



7750362_20210209094820465_1_XLARGE



7750362_20210209094823987_1_XLARGE



7750362_20210209094826953_1_XLARGE



7750362_20210209094830059_1_XLARGE



7750362_20210209094833151_1_XLARGE



7750362_20210209094903209_1_XLARGE



7750362_20210209094907177_1_XLARGE



7750362_20210209094909958_1_XLARGE



7750362_20210209094913046_1_XLARGE



7750362_20210209094915806_1_XLARGE



7750362_20210209094918218_1_XLARGE



7750362_20210209094921211_1_XLARGE



7750362_20210209095332197_1_XLARGE



7750362_20210209095334224_1_XLARGE



7750362_20210209095337696_1_XLARGE



7750362_20210209095345044_1_XLARGE



7750362_20210209095352197_1_XLARGE



7750362_20210209095359043_1_XLARGE



7750362_20210209095405928_1_XLARGE



7750362_20210209095413521_1_XLARGE



7750362_20210209095420759_1_XLARGE



7750362_20210209095556292_1_XLARGE



7750362_20210209095600310_1_XLARGE



7750362_20210209095605703_1_XLARGE



7750362_20210209095613593_1_XLARGE



7750362_20210209100212470_1_XLARGE



7750362_20210209100222619_1_XLARGE



7750362_20210209100231865_1_XLARGE



7750362_20210209100241106_1_XLARGE



7750362_20210209100251138_1_XLARGE



7750362_20210209100300725_1_XLARGE



7750362_20210209100310778_1_XLARGE



7750362_20210209100323741_1_XLARGE



7750362_20210209100332670_1_XLARGE



7750362_20210209100341801_1_XLARGE



7750362_20210209100350392_1_XLARGE



7750362_20210209100358497_1_XLARGE



7750362_20210209100406475_1_XLARGE



7750362_20210209100415539_1_XLARGE



7750362_20210209100358497_1_XLARGE



7750362_20210209100406475_1_XLARGE



7750362_20210209100415539_1_XLARGE



7750362_20210209100424384_1_XLARGE



7750362_20210209100432391_1_XLARGE



7750362_20210209110227946_1_XLARGE



7750362_20210209110236067_1_XLARGE



7750362_20210209110245306_1_XLARGE



7750362_20210209110257847_1_XLARGE



7750362_20210209110714803_1_XLARGE



7750362_20210209110723774_1_XLARGE



7750362_20210209110733342_1_XLARGE



7750362_20210209110741860_1_XLARGE



7750362_20210209112635297_1_XLARGE



7750362_20210209112638877_1_XLARGE



7750362_20210209112644041_1_XLARGE



7750362_20210209112651692_1_XLARGE



7750362_20210209112700973_1_XLARGE



7750362_20210209112710339_1_XLARGE



7750362_20210209112718791_1_XLARGE



7750362_20210209112726560_1_XLARGE



7750362_20210209112735240_1_XLARGE



7750362_20210209112743508_1_XLARGE



7750362_20210209112754612_1_XLARGE



7750362_20210209112806092_1_XLARGE



7750362_20210209112813726_1_XLARGE



7750362_20210209112825971_1_XLARGE



7750362_20210209112833986_1_XLARGE



7750362_20210209112841962_1_XLARGE



7750362_20210209112849223_1_XLARGE



7750362_20210209112857238_1_XLARGE



7750362_20210209112904679_1_XLARGE



7750362_20210209112912888_1_XLARGE



7750362_20210209112920475_1_XLARGE



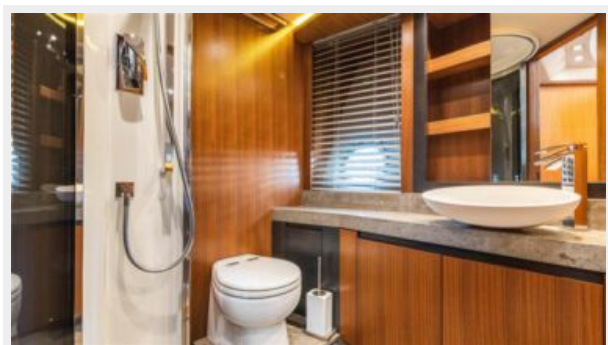
7750362_20210209112927620_1_XLARGE



7750362_20210209112935356_1_XLARGE



7750362_20210209113724287_1_XLARGE



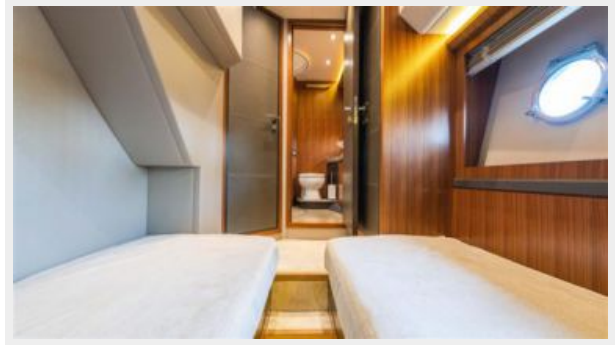
7750362_20210209113736652_1_XLARGE



7750362_20210209113746972_1_XLARGE



7750362_20210209113756439_1_XLARGE



7750362_20210209115950504_1_XLARGE



7750362_20210209115953423_1_XLARGE



7750362_20210209120004812_1_XLARGE



7750362_20210209120012685_1_XLARGE



7750362_20210209120020114_1_XLARGE



7750362_20210209120028149_1_XLARGE



7750362_20210209120036501_1_XLARGE



7750362_20210209120043860_1_XLARGE



7750362_20210209120051618_1_XLARGE



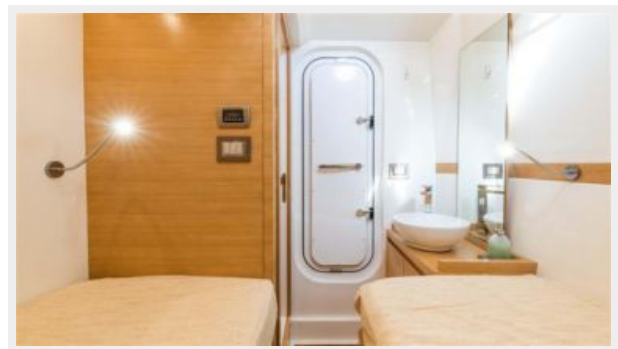
7750362_20210209120100919_1_XLARGE



7750362_20210209120330993_1_XLARGE



7750362_20210209120337909_1_XLARGE



7750362_20210209120344603_1_XLARGE



7750362_20210209120351809_1_XLARGE



7750362_20210209121011210_1_XLARGE



7750362_20210209121032697_1_XLARGE



7750362_20210209121041282_1_XLARGE



7750362_20210209121054040_1_XLARGE



7750362_20210209121103493_1_XLARGE



7750362_20210209121112739_1_XLARGE



7750362_20210209121123077_1_XLARGE



7750362_20210209121132845_1_XLARGE



7750362_20210209121142602_1_XLARGE



7750362_20210209121151790_1_XLARGE



7750362_20210209095800879_1_XLARGE



7750362_20210209095810304_1_XLARGE



7750362_20210209095820258_1_XLARGE



7750362_20210209095830752_1_XLARGE



7750362_20210209095838800_1_XLARGE



7750362_20210209095850676_1_XLARGE



7750362_20210209095858732_1_XLARGE



7750362_20210209095906971_1_XLARGE



7750362_20210209095915631_1_XLARGE



7750362_20210209095924227_1_XLARGE



7750362_20210209095931670_1_XLARGE



КОНТАКТЫ

Андрей Шестаков (Andrey Shestakov) – ведущий яхтенный брокер отдела продаж яхт и судов компании Shestakov Yacht Sales Inc. Официальный представитель Shestakov Yacht Sales Inc. для русскоговорящих клиентов в центральном офисе компании в Майами/Форт Лодердейл/Флорида/США.

Контактная информация

Email: andrey@shestakovyachtsales.com

Web: shestakovyachtsales.com

Телефоны

Краснодарский край: **+7(918)465-66-44**

США, Майами, Флорида: **+1(954)274-4435**

Время работы

Понедельник – Суббота: **9:00 - 21:00**
EDT

Воскресенье: **Закрито**

Адрес



Harbour Towne Marina, 850 NE 3rd St,
STE 213, Dania, FL 33004